

THE ACCOMPANYING PLAT IS AN ACCURATE REPRESENTATION SHOWING THE LOCATION OF A PROPOSED WELL. THIS LOCATION MAY BE DESCRIBED AS A POINT 1980 FEET NORTH OF THE SOUTH LINE, AND 610 FEET WEST OF THE EAST LINE OF SECTION 21, TOWNSHIP 8 N RANGE 58 W OF THE 6th P.M., WELD COUNTY, COLORADO. THE SURFACE ELEVATION AT THIS POINT IS 4697 FEET m. s. **RECEIVED**

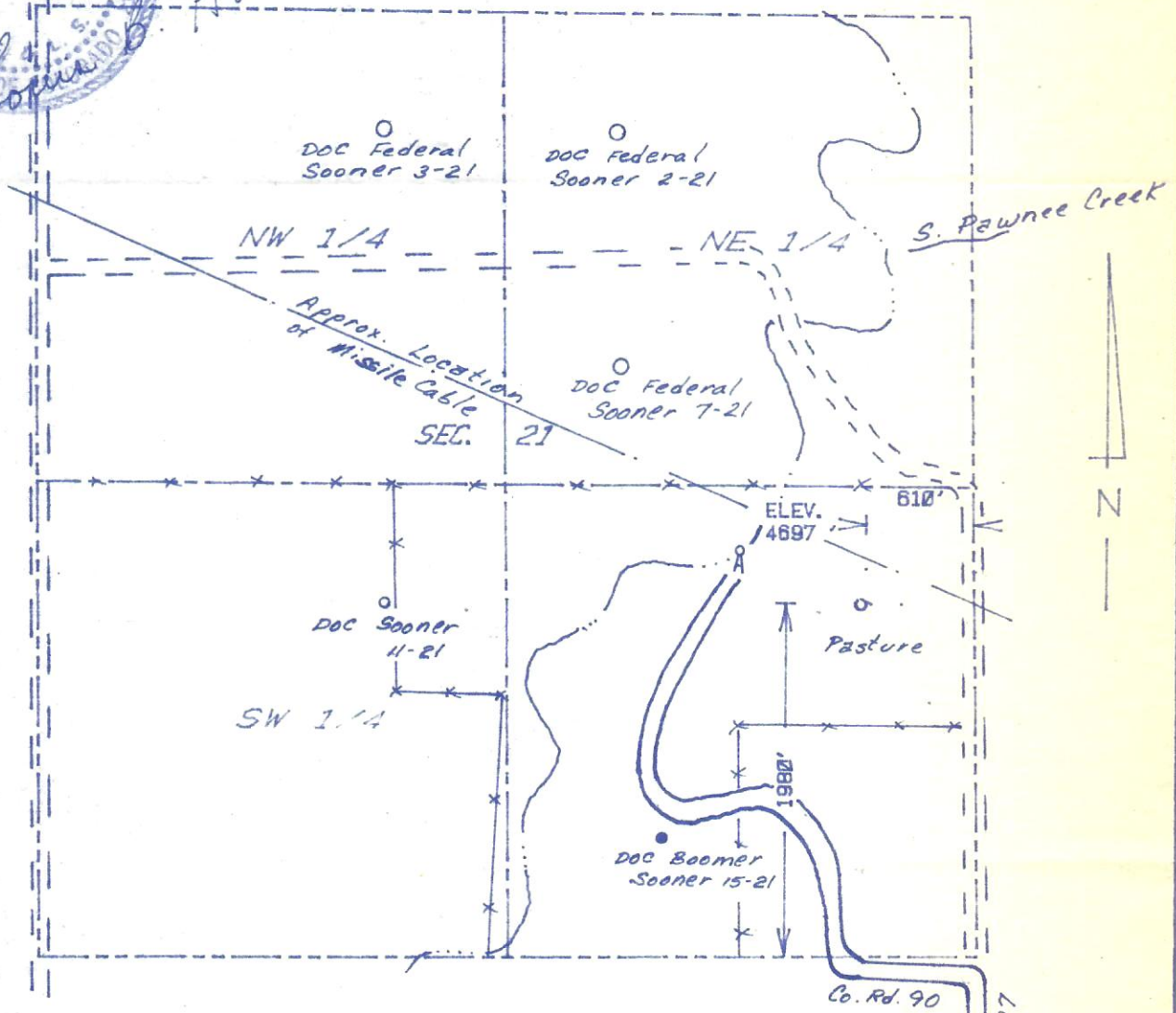


*Harmon*



JUL 14 1986

COLO. OIL & GAS CON. COMM



SCALE - 1"=1000'

○ SURVEYED POINT  
 . REFERENCE STAKE ( 200 'N, 200 'E )  
 SE 1/4 SEC. 21 , T 8 N , R 58 W

**HARMON**  
**ENGINEERING**  
**SERVICES**

D. O. C. SOONER #9-21

DIVERSIFIED RESOURCES LTD

WELD CO., COLORADO 7 JULY 86