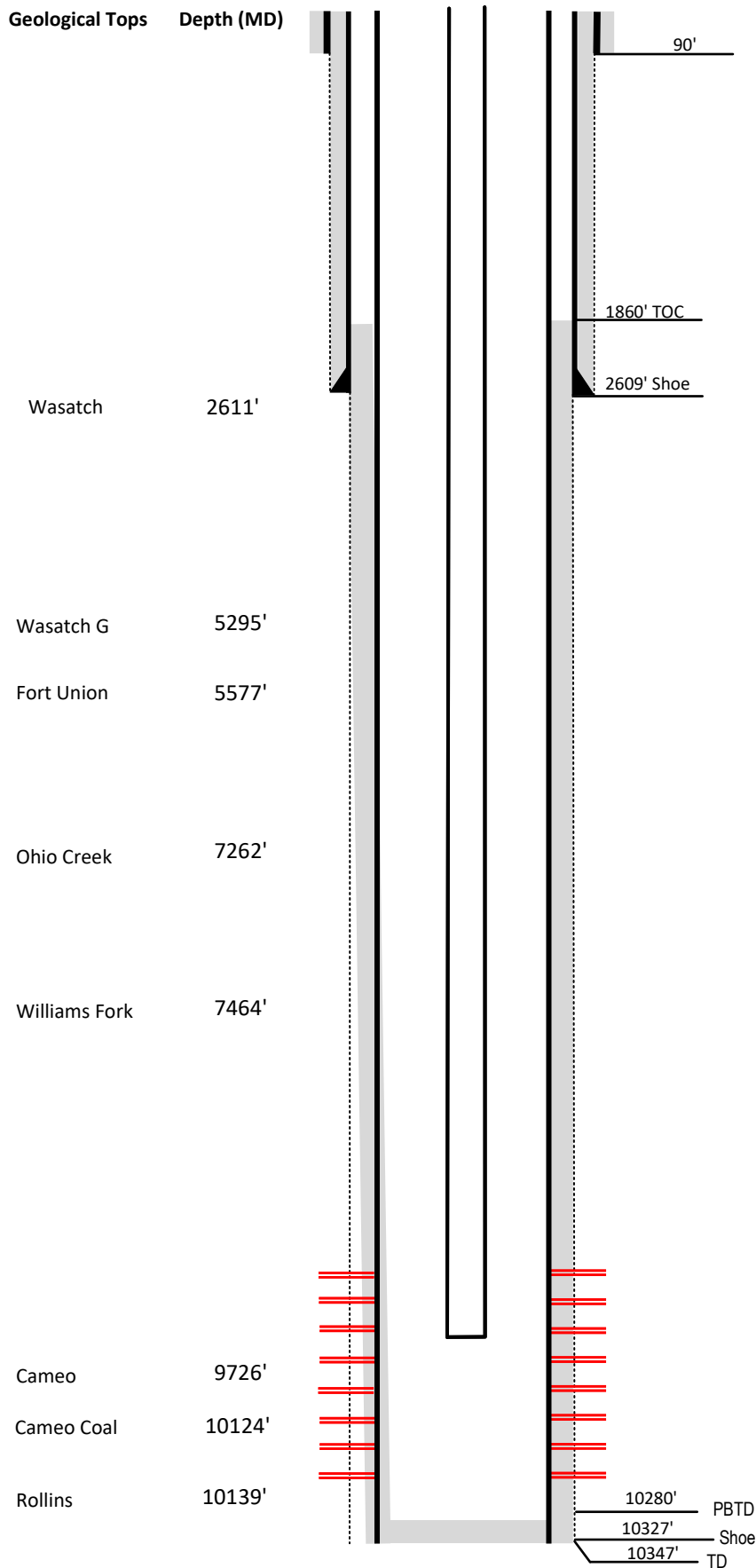


# Laramie Energy

## Current Wellbore Diagram

Not to scale

FEDERAL WELL: YES  NO



**Well Name** CC Federal 0697-15-17W  
**API** 05-045-24518-00  
**Surface Location** SENE Sec 15 T6S R97W 6<sup>th</sup> PM  
**GPS Coordinates** 39.526131, -108.199096  
**County, State** Mesa County, CO  
**Diagram Date** 1/5/2026

Hole	26" @ 110'
Conductor	18" @ 110'
Cement	150 sks

<b>Surface Hole</b>	14.75" @ 2609'
Casing	9-5/8" 36ppf J55 @ 2609'
Cement	979 sks
TOC	Surface

<b>Production Hole</b>	8 3/4" @ 10327'
Casing	4-1/2" 11.6 ppf P110 @ 10327'
Cement	1397 sks
TOC	1860'

<b>Tubing</b>	2-3/8" 4.7 ppf EUE L80 @ 9697'
---------------	--------------------------------

Perforations	Top	Bottom
	8094'	10108'

<b>Remedial/Top Out</b>	
1 <sup>st</sup> String	Parasite @ 2483 – 30 sks