

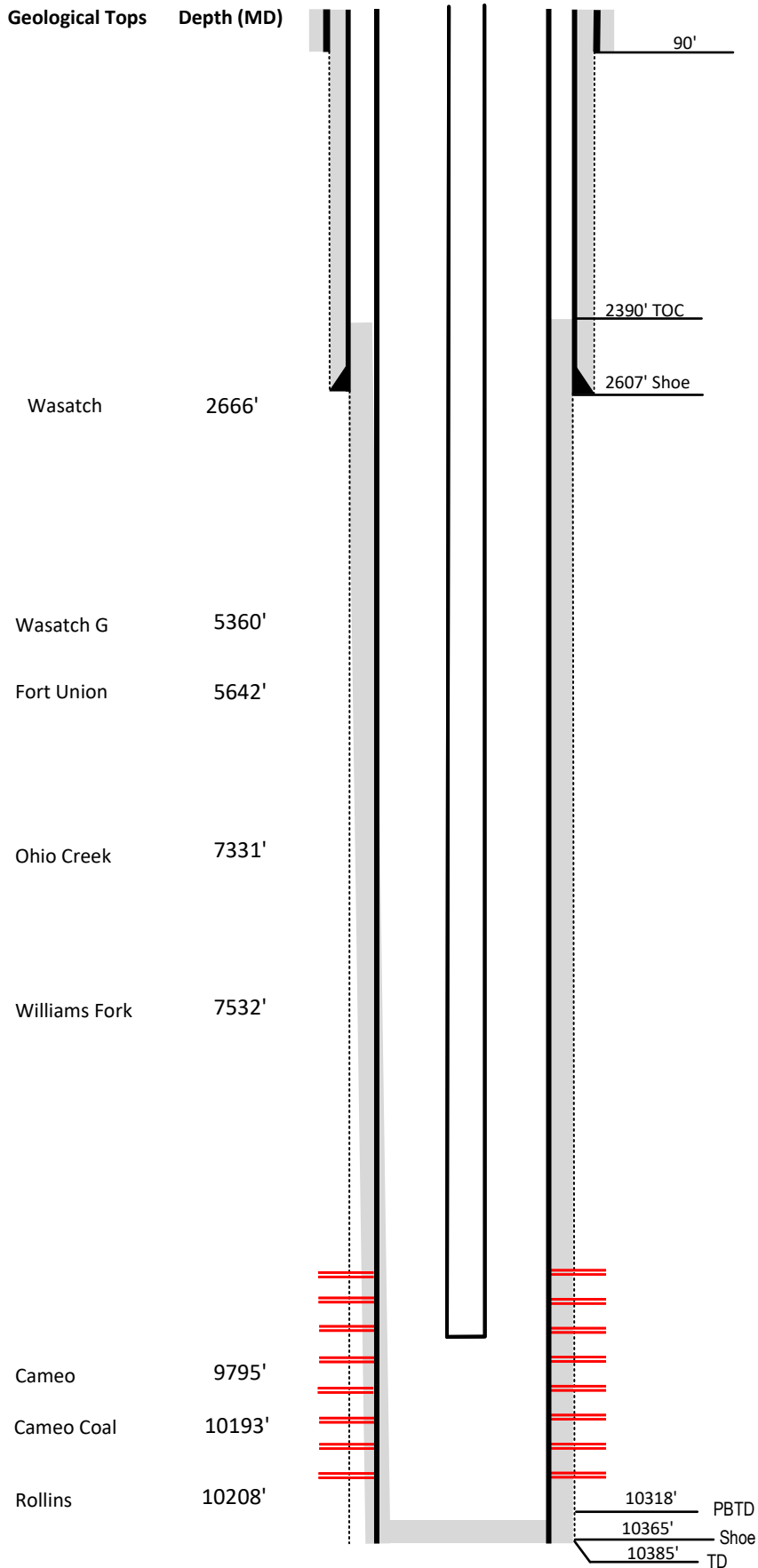
# Laramie Energy

## Current Wellbore Diagram

Not to scale

FEDERAL WELL: YES  NO

Geological Tops Depth (MD)



Well Name CC Federal 0697-15-18W  
 API 05-045-24532-00  
 Surface Location SENE Sec 15 T6S R97W 6<sup>th</sup> PM  
 GPS Coordinates 39.526115, -108.199067  
 County, State Mesa County, CO  
 Diagram Date 1/5/2026

Hole	26" @ 110'
Conductor	18" @ 110'
Cement	150 sks

<b>Surface Hole</b>	14.75" @ 2607'
Casing	9-5/8" 36ppf J55 @ 2607'
Cement	979 sks
TOC	Surface

<b>Production Hole</b>	8 3/4" @ 10365'
Casing	4-1/2" 11.6 ppf P110 @ 10365'
Cement	1410 sks
TOC	2390'

<b>Tubing</b>	2-3/8 4.7 ppf EUE L80 @ 9769'
---------------	-------------------------------

Perforations	Top	Bottom
	8145'	10161'

<b>Remedial/Top Out</b>	
1 <sup>st</sup> String	Parasite @ 2480 – 30 sks