

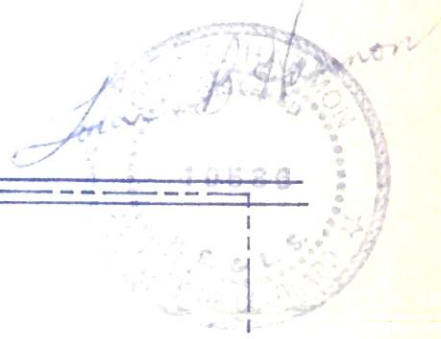
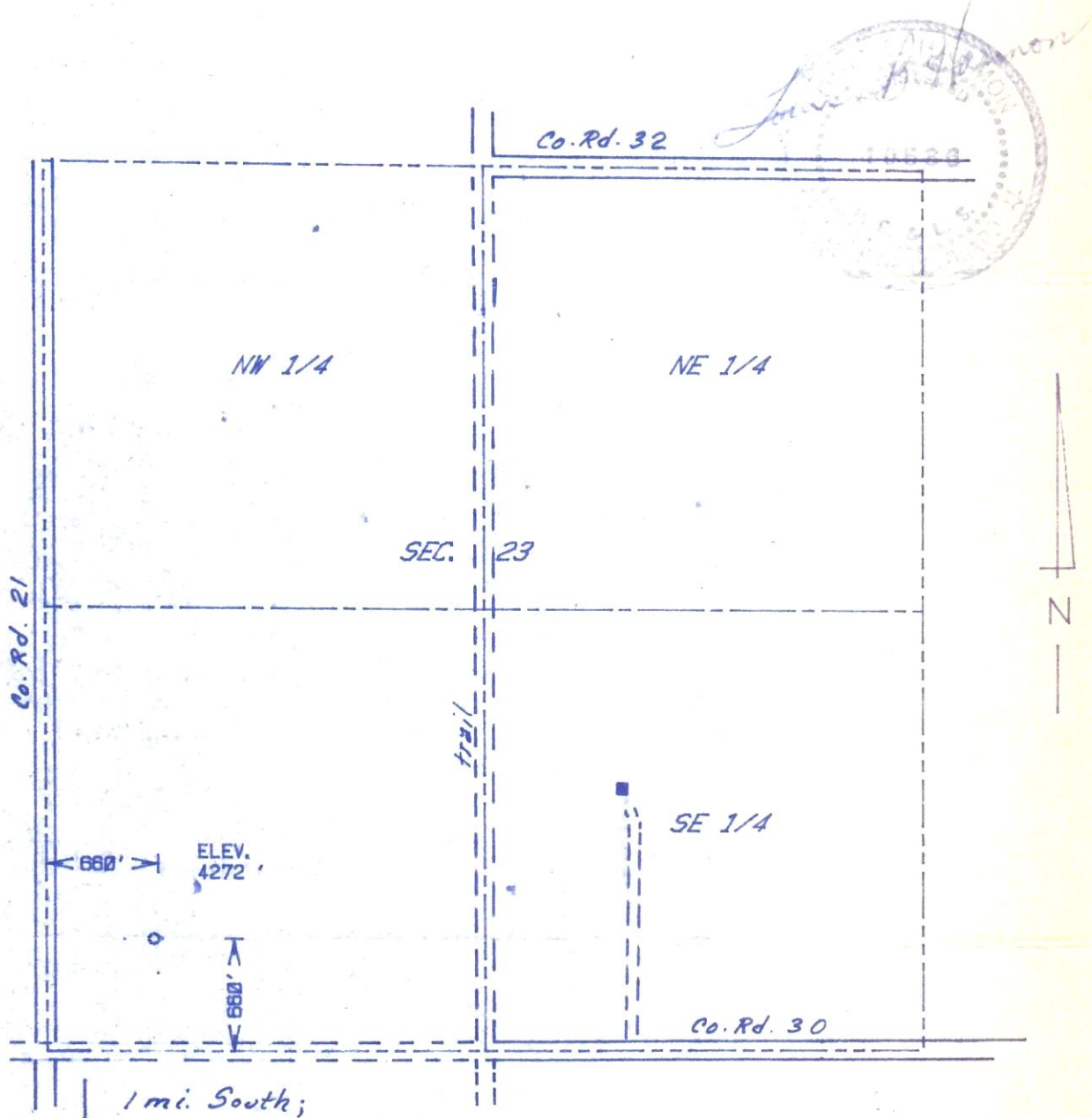


00248037

RECEIVED  
MAR 20 1984

COLO. OIL & GAS CONS. COMM.

The accompanying plat is an accurate representation showing the location of a proposed well. This location may be described as a point 660 feet north of the south line, and 660 feet east of the west line of Section 23, Township 8 N Range 54 W of the 6th P.M., LOGAN County, COLORADO. The surface elevation at this point is 4272 feet m.s.l.



SCALE - 1"=1000' to Sterling  
1 mi. South;  
then 10 mi. East

○ SURVEYED POINT  
REFERENCE STAKE ( 200 'S, 200 'W)  
SW 1/4 SEC. 23 , T 8 N, R 54 W

**HARMON**  
**ENGINEERING**  
**SERVICES**

HEINZE #1  
BEARTOOTH OIL AND GAS /EXETER  
LOGAN CO., COLORADO 8 MARCH 1984

