



78-1221



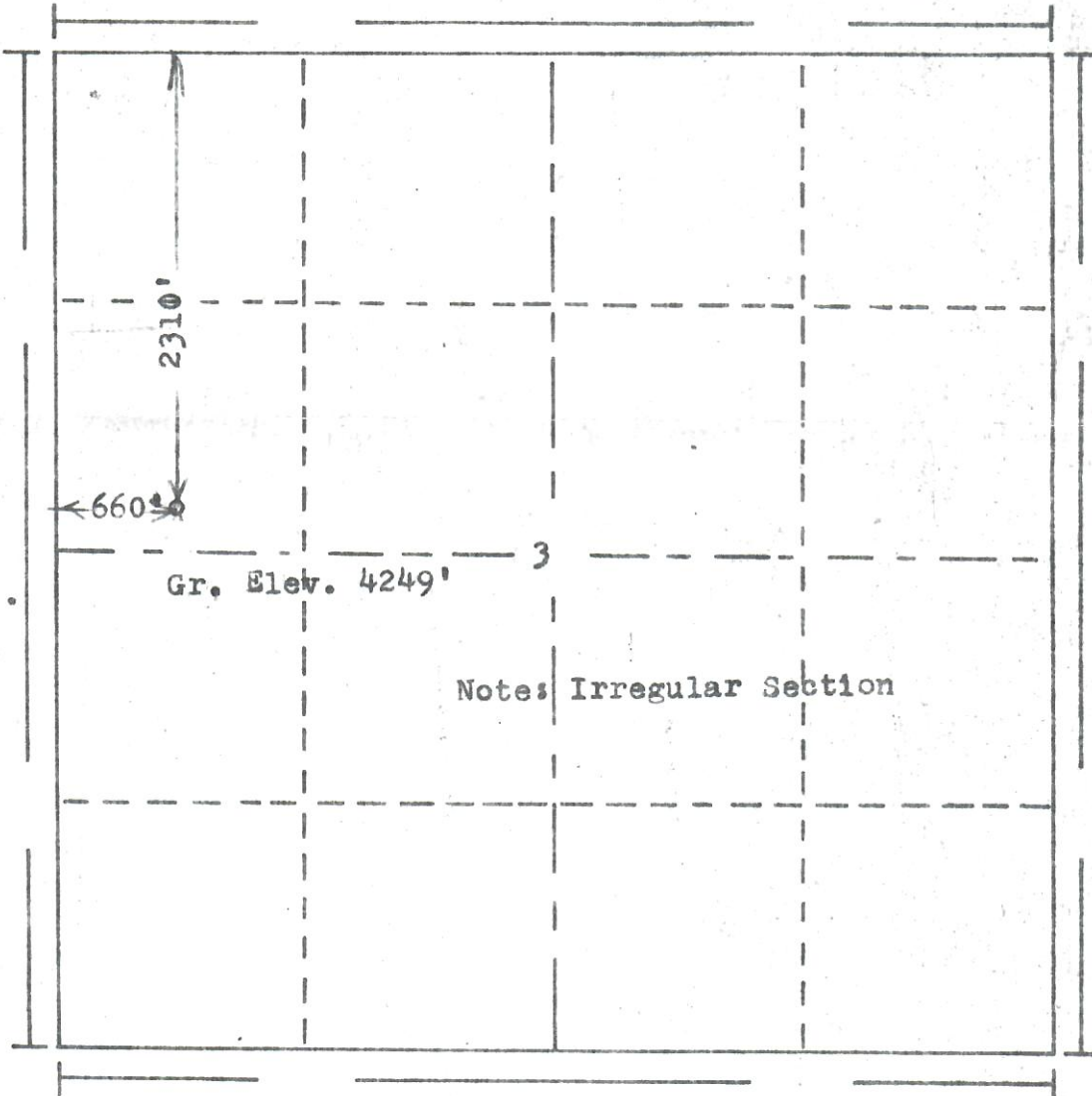
00247788

RECEIVED

DEC 22 1978

R. 55W

COLO. OIL & GAS CONC. CHART



T. 8 N

Scale... 1" = 1000'

Powers Elevation Company, Inc. of Denver, Colorado has in accordance with a request from Mr. Arbuckle for Kimbark Operating Co. & Okmar Oil Co.

determined the location of No.1 Birney to be 2310'FN & 660'FW Section 3 Township 8N Range 55W of the 6th Principal Meridian Logan County, Colorado

I hereby certify that this plat is an accurate representation of a correct survey showing the location of

Date: 12-15-78

*Brian J. Hanning*

Licensed Land Surveyor No. 2853 State of Colorado

12