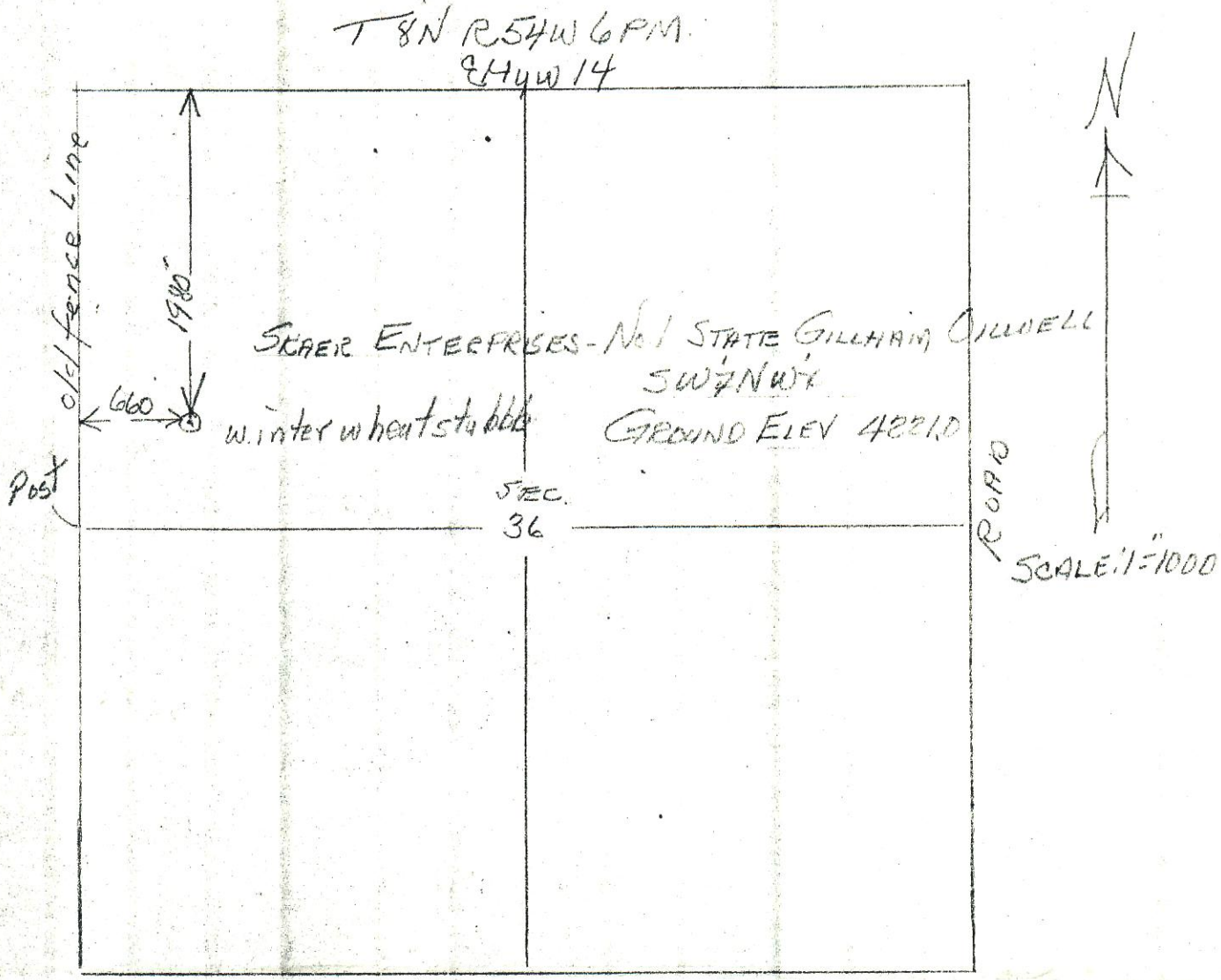


CERTIFICATE OF SURVEY
for
Skaer Enterprises
Logan County, Colorado

APR 23 1987

COLO. OIL & GAS CONS. COMM



I hereby certify that the above plat is an accurate representation of a correct survey showing the location of Skaer Enterprises-No.1 State, Gillham Oilwell in SW 1/4 NW 1/4 Sec.36 T8N R54W 6PM. The elevation of the ground at the stake is 4221.0 feet above sea level from U.S.G.S. Bench Mark.

Fort Morgan, Colorado
April 23, 1987

Geoff Osborne
Registered Professional Engineer
State of Colorado