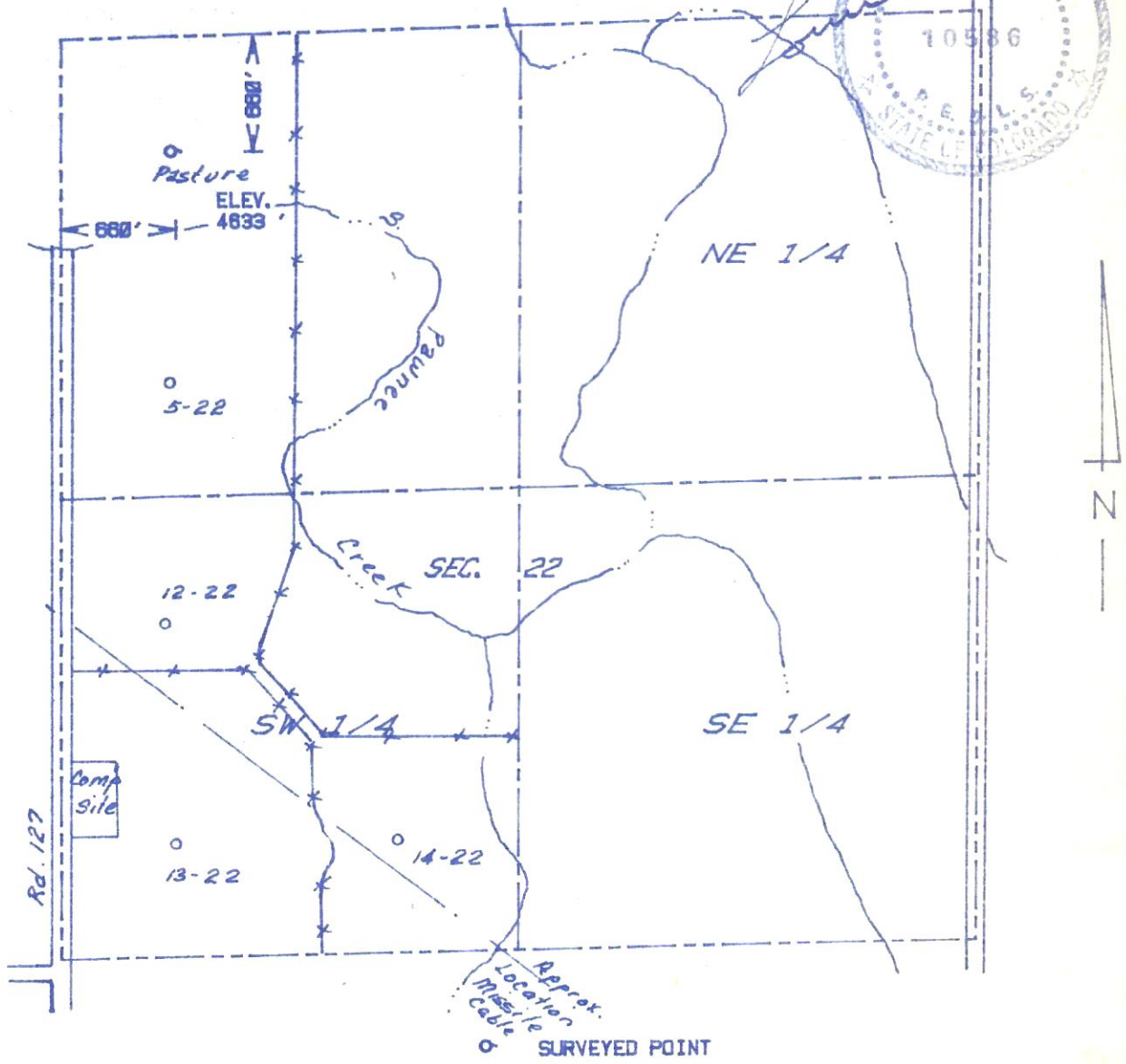


THE ACCOMPANYING PLAT IS AN ACCURATE REPRESENTATION SHOWING THE LOCATION OF A PROPOSED WELL. THIS LOCATION MAY BE DESCRIBED AS A POINT 660 FEET SOUTH OF THE NORTH LINE, AND 660 FEET EAST OF THE WEST LINE OF SECTION 22, TOWNSHIP 8 N RANGE 58 W OF THE 6th P.M., WELD COUNTY, COLORADO. THE SURFACE ELEVATION AT THIS POINT IS 4633 FEET m. s. l.

RECEIVED  
 JUL - 6 1987  
 COLO. OIL & GAS CONS. COMM.



SCALE - 1"=1000'

NW 1/4 SEC. 22 , T 8 N , R 58 W

**ARMON**  
**ENGINEERING**  
**SERVICES**

KRAGER #4-22

DIVERSIFIED OPERATING CORP.

WELD CO., COLORADO 26 JUNE 1987

⑦

4259-153  
 85/63