



00239391

DIL AND GAS CONSERVATION COMMISSION
DEPARTMENT OF NATURAL RESOURCES
OF THE STATE OF COLORADO

File in triplicate for Patented and Federal lands.
File in quadruplicate for State lands.

TIGHT HOLE

RECEIVED

MAR 18 1980

5. LEASE DESIGNATION AND SERIAL NO.
GAS CONS. COMM.

6. IF INDIAN, ALLOTTEE OR TRIBE NAME

7. UNIT AGREEMENT NAME

8. FARM OR LEASE NAME
DALKE

9. WELL NO.
1

10. FIELD AND POOL, OR WILDCAT
Wildcat

11. SEC., T., R., M., OR BLOCK AND SURVEY OR AREA
11-T8N-R54W

12. COUNTY
Logan

13. STATE
Colo.

WELL COMPLETION OR RECOMPLETION REPORT AND LOG

1a. TYPE OF WELL: OIL WELL GAS WELL DRY Other _____

b. TYPE OF COMPLETION: NEW WELL WORK OVER DEEP-EN PLUG BACK DIFF. RESVR. Other _____

2. NAME OF OPERATOR
Quest Oil Company, et al

3. ADDRESS OF OPERATOR
444 Denver Club Building, Denver, Colo. 80202

4. LOCATION OF WELL (Report location clearly and in accordance with any State requirements)
At surface NE SW (1980' FSL & 1980' FWL) Sec. 11
At top prod. interval reported below Same
At total depth

14. PERMIT NO. 79-717 DATE ISSUED 7/26/79

15. DATE SPUDDED 9/1/79 16. DATE T.D. REACHED 9/7/79 17. DATE COMPL. (Ready to prod. or Plug & Abd.) 9/7/79 18. ELEVATIONS (DF, REB, RT, GR, ETC.) 4280' GL 4290' KB 19. ELEV. CASINGHEAD -

20. TOTAL DEPTH, MD & TVD 5240' KB 21. PLUG, BACK T.D., MD & TVD - 22. IF MULTIPLE COMPL., HOW MANY D&A 23. INTERVALS DRILLED BY - ROTARY TOOLS 0 - 5240' CABLE TOOLS -

24. PRODUCING INTERVAL(S), OF THIS COMPLETION—TOP, BOTTOM, NAME (MD AND TVD)
D&A

25. WAS DIRECTIONAL SURVEY MADE
No

26. TYPE ELECTRIC AND OTHER LOGS RUN
Dresser Atlas IES & FDC

27. WAS WELL CORED YES NO (Submit analysis)
DRILL STEM TEST YES NO (See reverse side)

28. CASING RECORD (Report all strings set in well)

CASING SIZE	WEIGHT, LB./FT.	DEPTH SET (MD)	HOLE SIZE	CEMENTING RECORD	AMOUNT PULLED
8-5/8"	24#	82' KB	12 1/4"	90 sx	None

29. LINER RECORD

SIZE	TOP (MD)	BOTTOM (MD)	SACKS CEMENT	SCREEN (MD)

30. TUBING RECORD

SIZE	DEPTH SET (MD)	PACKER SET (MD)

31. PERFORATION RECORD (Interval, size and number)
D&A

32. ACID, SHOT, FRACTURE, CEMENT SQUEEZE, ETC.

DEPTH INTERVAL (MD)	AMOUNT AND KIND OF MATERIAL USED

33. PRODUCTION

DATE FIRST PRODUCTION D&A PRODUCTION METHOD (Flowing, gas lift, pumping—size and type of pump) D&A WELL STATUS (Producing or shut-in) D&A

DATE OF TEST	HOURS TESTED	CHOKE SIZE	PROD'N. FOR TEST PERIOD	OIL—BBL.	GAS—MCF.	WATER—BBL.	GAS-OIL RATIO

FLOW. TUBING PRESS.	CASING PRESSURE	CALCULATED 24-HOUR RATE	OIL—BBL.	GAS—MCF.	WATER—BBL.	OIL GRAVITY-API (CORR.)

34. DISPOSITION OF GAS (Sold, used for fuel, vented, etc.) TEST WITNESSED BY

35. LIST OF ATTACHMENTS
Electric Logs, Geological Report & DST

36. I hereby certify that the foregoing and attached information is complete and correct as determined from all available records

SIGNED D. C. Qualls TITLE President DATE 9/26/79

DVR
FJP
HHM
JAM
JJD
RLS
CGM

CONFIDENTIAL See Spaces for Additional Data on Reverse Side CONFIDENTIAL
TO April 7, 1980

CONFIDENTIAL

37. SUMMARY OF POROUS ZONES:
 SHOW ALL IMPORTANT ZONES OF POROSITY AND CONTENTS THEREOF; CORED INTERVALS; AND ALL DRILL-STEM TESTS, INCLUDING DEPTH INTERVAL TESTED, CUSHION USED, TIME TOOL OPEN, FLOWING AND SHUT-IN PRESSURES, AND RECOVERIES.

38. GEOLOGIC MARKERS

FORMATION	TOP	BOTTOM	DESCRIPTION, CONTENTS, ETC.

NAME	TOP	
	MEAS. DEPTH	TRUE VERT. DEPTH

CONFIDENTIAL

Handwritten signature

Handwritten notes and stamps

Vertical stamp: CONFIDENTIAL

TIGHT HOLE



QUEST OIL COMPANY

444 DENVER CLUB BUILDING
518 SEVENTEENTH STREET
DENVER, COLORADO 80202

RECEIVED

MAR 18 1980

COLO. OIL & GAS COM. COMM.
PHONE (303) 825-3611

WELL REPORT

DALKE #1

NE SW Section 11-T8N-R54W
Logan County, Colorado

DVR	
POP	
HHW	/
JAM	
LJD	/
RLS	
COM	

By: Claus Axelsen, Geologist

CONFIDENTIAL



RECEIVED

MAR 18 1980

COLO. OIL & GAS CONS. COMM.

TABLE OF CONTENTS

DISCUSSION	1
DAILY DRILLING CHRONOLOGY	2
DEVIATION SURVEYS	2
MUD INFORMATION	2
FORMATION TOPS	2
LOG ANALYSIS	3
DRILL STEM TEST	3
PLUGGING REPORT	3
STRIP LOG & SAMPLE DESCRIPTION	4

RECEIVED

MAR 18 1980

DISCUSSION

COLO. OIL & GAS CONS. COMM.

Quest Oil Company, et al, drilled the Dalke #1 as a wildcat well. The prime objective was the "J" sand of Lower Cretaceous age. The location for the test was in the northeast of the southwest of Section 11, Township 8 North, Range 54 West, in Logan County, Colorado.

The "D" sand was topped at a depth of 5040' (-750 subsea). The "D" sand has two zones of porosity six and eleven feet thick. The sands were fine grained, moderate to well sorted with good porosity and permeability. Log analysis indicated porosity in the two zones averaged 19%. No shows were seen in the samples and log calculations indicated the sands were wet and non-productive.

The "J-1" sand (5148-5154') consisted of fine to very fine grained sandstone with poor porosity and permeability. No shows were seen in the samples and log analysis indicated the sand was tight. The "J-2" sand (5160-5178') was fine grained moderate to well sorted with good porosity and permeability. Log calculations indicated possible "J-2" pay from 5163-5168'. Water saturation in the zone was 75%, however, a drill stem test recovered mud with only a slight show of oil.

On the basis of log analysis and drill stem test data, the operators plugged and abandoned the well.

SHOWS
 D = Dead
 ● = Scat.
 GAS
 80-100%
 40-80%
 15-40%
 5-15%
 OIL

LITHOLOGY

DEPTH-ACCESSORY-
 COMPLETION DATA

POROSITY
 5-13%
 13-18%
 18-23%
 23%+

DST'S

CORES

DRILLING TIME
 MIN/FT

GAS LOG

GEOLOGIST
 CIRCULATION
 BIT RECORD
 DEVIATION

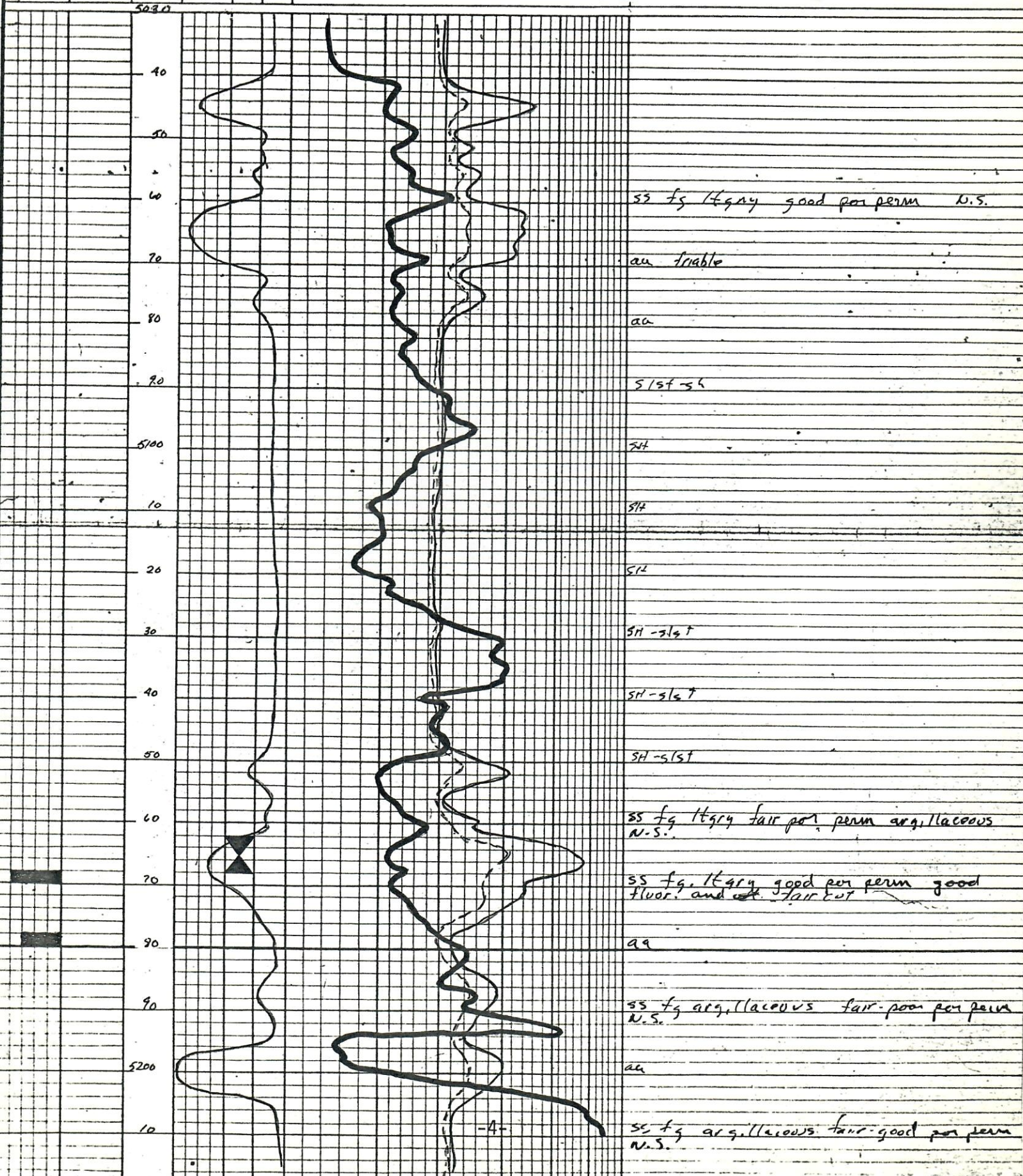
SCALE

5 10 15 20 25 30

RECEIVED
 LITHOLOGIC DESCRIPTION

MAR 18 1980

COLO. OIL & GAS CONS. COMM.



RECEIVED

MAR 18 1980

COLO. OIL & GAS CONS. COMM.

SUMMARY

OPERATOR: Quest Oil Company, et al
WELL: DALKE #1
LOCATION: NE SW Sec. 11-T8N-R54W
COUNTY: Logan
STATE: Colorado
ELEVATIONS: 4280' GL - 4290' KB
CASING: 8-5/8" csg set @ 82' KB
HOLE SIZE: 7-7/8
TOTAL DEPTH: 5240' Driller - 5240' Logger
TOTAL DEPTH FORMATION: Skull Creek
SPUD: 4 PM 9/1/79
COMPLETED: 9/7/79
CORES: None
DRILL STEM TESTS: One
LOGS: Dresser-Atlas (IES, FDC/GR)
CONTRACTOR: Toltek Drilling Company
TREATMENT: None
PRODUCTION: D&A

RECEIVED

MAR 18 1980

COLO. OIL & GAS CONS. COM. L.

DAILY DRILLING CHRONOLOGY

<u>DATE</u>	<u>DEPTH</u>	<u>ACTIVITY</u>	<u>FEET MADE</u>
9/2/79	1023'	Spud 4 PM 9/1/79	1023'
9/3/79	2977'	Drilling	1954'
9/4/79	4497'	Drilling	1520'
9/5/79	5050'	Drilling	553'
9/6/79	5240'	Logging	190'
9/7/79	5240'	Testing & P&A	0'

DEVIATION SURVEYS

<u>DEPTH</u>	<u>DEVIATION</u>
2977'	3/4 ⁰
4497'	1 ⁰

MUD INFORMATION

<u>DATE</u>	<u>DEPTH</u>	<u>WEIGHT</u>	<u>VISCOSITY</u>	<u>WATER LOSS</u>
9/5/79	5050'	10	60	6.4
9/6/79	5240'	10	75	6.0

FORMATION TOPS

<u>FORMATION</u>	<u>LOG DEPTH</u>	<u>DATUM</u>
Niobrara	4190'	+ 100
Bentonite	4948'	- 658
"D" Sand	5040'	- 750
"J" Sand	5147'	- 857
Total Depth	5240'	

11-8N-54W

RECEIVED

MAR 18 1960

COLO. OIL & GAS CORP. D.D.M.

LOG ANALYSIS

<u>DEPTH</u>	<u>RW</u>	<u>POROSITY</u> %	<u>WATER</u> %	<u>REMARKS</u>
5042-5048'	.35	19	100	Wet
5061-5069'	"	19	100	Wet
5084-5086'	"	6	100	Tight
5152-5154'	"	12	100	Wet
5163-5168'	"	16	75	Show
5168-5174'	"	5	100	Tight
5186-5190'	"	4	100	Tight
5196-5204'	"	19	100	Wet

DRILL STEM TEST
Liberty Testers

DST #1 (5162-5168'): Open 150 min; SI 30 min

Tool opened with a weak blow increased to 2" in bucket; held steady throughout open period.

IH	2800
FH	2663
IF	72
FF	127
FSIP	525

Recovered: 120' mud with a scum of oil.

PLUGGING RECORD

Permission and instructions to abandon and plug the well were received. Plugs were set 9/7/79 as follows:

- 10 sx cmt in top of surf csg
- 20 sx cmt in btm of surf csg