



HALLIBURTON | Cementing

DESIGN, DELIVER, AND VALIDATE

SUSTAINABLE BARRIERS

TAILORED

to

MINIMIZE RISK

and

MAXIMIZE PRODUCTION.

HALLIBURTON

POST JOB SUMMARY

Customer Name: TIBERIUS ENERGY SERVICES
LLC-EBUS

Submitted By: Christopher Nettles

Date: 21-Nov-2025

Well Name: Totem 30

Job: INTERMEDIATE CASING

Rig: PRECISION 460

SO#: 0910459758

Objectives

Objective	Justification	Comments
HSE Objective	There are to be no accidents or incidents concerning any cementing operation and no harm is to be caused to the environment. Cementing jobs are to be conducted in accordance with Halliburton’s Health, Safety and Environmental Standards.	
Top of Cement (TOC)	Top of cement to surface with 35%OHXS	Job pumped as planned rates and volume, bumped plug at calculated displacement. No cement returns to surface. Added Baracarb-50 and 150 to the Spacer. At 255bbbls into displacement observed very little returns., 117bbbls lost during cement job.
Density Performance	Weight over Rate	Met. Verified with pressurized mud scale
Density Performance	Weight over Rate	Met. Verified with pressurized mud scale

Fluids Pumped

Stage No	Description	Density (ppg)	Rate (bbl/min)	Yield (ft ³ /sk)	Water Req. (gal/sk)	Volume (bbl)
1	Drilling Fluid (Mud)					
2	Spacer/Flush	11.5	3.0	2.416	15.08	50.0
3	Cement	12.5	3.0	2.021	10.25	167.3
4	Cement	13.2	3.0	1.683	7.92	103.2
	Top Plug/Start Displacement					
5	Mud	10.6	2.93			300.4

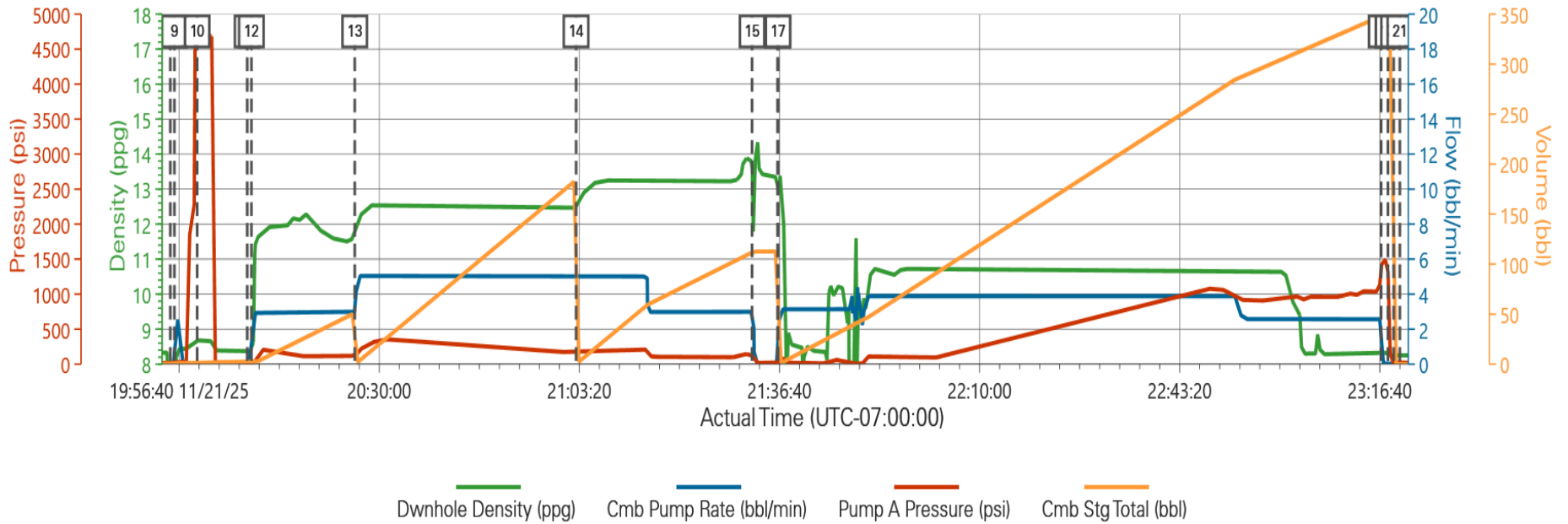
Job Log

Seq #	Graph Label	Time / Date	Comments
1	Call Out	21-Nov-2025 07:00	CREW CALLED OUT FOR FOR JOB.
2	Pre-Convoy Safety Meeting	21-Nov-2025 11:15	PRE-CONVOY SAFETY MEETING AT HES LOCATON TO DISCUSS ROUTE AND DRIVING HAZARDS.
3	Crew Leave Yard	21-Nov-2025 11:30	CREW DEPARTS HALLIBURTON FACILITIES FOR LOCATION.
4	Arrive At Loc	21-Nov-2025 12:30	CREW ARRIVES ON LOCATION. MET WITH CO MAN TO DISCUSS JOB. TD-7947' 8.75" OH TP-7945' 7" 26# HCL-80 FC-7856' PC-2018' 9/58 36# J55 TVD-7286' 10.2 PPG WBM. 1 BTM PLUGS 1 TOP. WATER 55* 7.0 PH 0 CHLORIDES.
5	Pre-Rig Up Safety Meeting	21-Nov-2025 13:00	PRE-RIG UP SAFTEY MEETING WITH ALL HES EMPLOYEES TO DISCUSS HAZARDS OF LOCATION AND DISCUSS RIG UP SEQUENCE.
6	Rig-up Lines	21-Nov-2025 13:10	RIG UP PUMPS AND LINES.
7	Pre-Job Safety Meeting	21-Nov-2025 20:30	SAFTEY NMEETING WITH HES COMPANY MAN AND RIG HANDS.
8	Start Job	21-Nov-2025 20:55	START JOB DATA RECORDING.
9	Fill Lines	21-Nov-2025 20:55	FILL LINES WITH 3 BBL OF FRESH WATER.
10	Test Lines	21-Nov-2025 20:59	PRESSURE TESTED LINES TO 4800 PSI 500 EKO TEST AT 500 PSI 5TH GEAR STALL AT 2200 PSI.
11	Drop Bottom Plug	21-Nov-2025 21:08	PLUG LEFT PLUG CONTAINER VERIFIED BY COMPANY MAN.
12	Pump Spacer 1	21-Nov-2025 21:08	PUMPED 50 BBLS OF 11.5 PPG TUNED SPACER. 2.42 CUFT/SK AND 15.08 GAL/SK VERIFIED WEIGHT WITH PRSSURIZED MUD SCALES. ADDED 500LBS BARACARB-50 AND 500 LBS BARACARB-150 ON FLY.
13	Pump Lead Cement	21-Nov-2025 21:25	PUMPED 167.3 BBLS OF 12.5 PPG ELASTICEM 465 SKS 2.02 CUFT/SK 10.25 GAL/SK. ADDED 98.1 LBS OF ECONOLITE TO MIX WATER. VERIFIED BY PRESSURISED MUD SCALES. TOC ESTIMATED AT SURFACE.

14	Pump Tail Cement	21-Nov-2025 22:02	PUMPED 103.2 BBLS OF 13.2 PPG ELASTICEM 345 SKS 1.68 CUFT/SK 7.92 GAL/SK. VERIFIED BY PRESSURISED MUD SCALES. TOC ESTIMATED AT 4202'.
15	Shutdown	21-Nov-2025 22:32	SHUTDOWN TO DROP TOP PLUG.
16	Drop Top Plug	21-Nov-2025 22:36	PLUG LEFT PLUG CONTAINER VERIFIED BY COMPANY MAN.
17	Pump Displacement	21-Nov-2025 22:36	BEGIN DISPLACEMENT 300.4 BBL OF 10.6 WATER BASED MUD.
18	Bump Plug	22-Nov-2025 00:16	PLUG BUMPED AT CALCULATED DISPLACEMENT FINAL CIRCULATION PRESSURE 2.5BBL/MIN 1050 PSI. HELD PRESSURE AT 1500 PIS. MINIMAL RETURNS TO SURFACE AT 255 BBL INTO DISPLACEMENT RIG LOST 117BBL DURING CEMENT JOB.
19	Check Floats	22-Nov-2025 00:18	RELEASED PRESSURE BACK TO TRUCK FLOATS HELD 2 BBL BACK.
20	End Job	22-Nov-2025 00:18	END JOB DATA RECORDING.
21	Pre-Rig Down Safety Meeting	22-Nov-2025 00:20	PRE-RIG DOWN SAFTEY MEETING TO DISCUSS HAZRDS OF LOCATION AND SEQUENCE OF RIG DOWN.
22	Rig Down Lines	22-Nov-2025 00:30	RIG DOWN PUMPS AND LINES.
23	Pre-Convoy Safety Meeting	22-Nov-2025 02:20	PRE-CONVOY SAFETY MEETING ON LOCATON TO DISCUSS ROUTE AND DRIVING HAZARDS.
24	Crew Leave Location	22-Nov-2025 02:30	CREW DEPARTS LOCATION THANK YOU FOR CHOOSING HES. THOMAS HAAS AND CREW.

Job Chart

Tiberius 7" Intermediate Totem 30



Lab Reports

HALLIBURTON

Rockies, Brighton

Lab Results- Lead

Job Information

Request/Slurry	2944512/2	Rig Name	Precision 460	Date	21/NOV/2025
Submitted By	Javier VargasMachado	Job Type	Intermediate Casing	Bulk Plant	Brighton
Customer	Tiberius Energy Services LLC	Location	Adams	Well	Totem #30

Well Information

Casing/Liner Size	7 in / 177.8 mm	Depth MD	2362 m / 7748 ft	BHST	88°C / 190°F
Hole Size	8.75 in / 222.25 mm	Depth TVD	2220 m / 7282 ft	BHCT	54°C / 130°F
Press.	345 bar / 5000 psi				

Cement Information - Lead Design

Conc	UOM	Cement/Additive	Cement Properties	
		ElastiCem	Slurry Density	12.5 lbm/gal
3	lb/sk	WellLife 708	Slurry Yield	2.03 ft ³ /sack
0.1	% BWOC	SUPER CBL	Water Requirement	10.27 gal/sack
0.2	% BWOC	Econolite	Total Mix Fluid	10.28 gal/sack

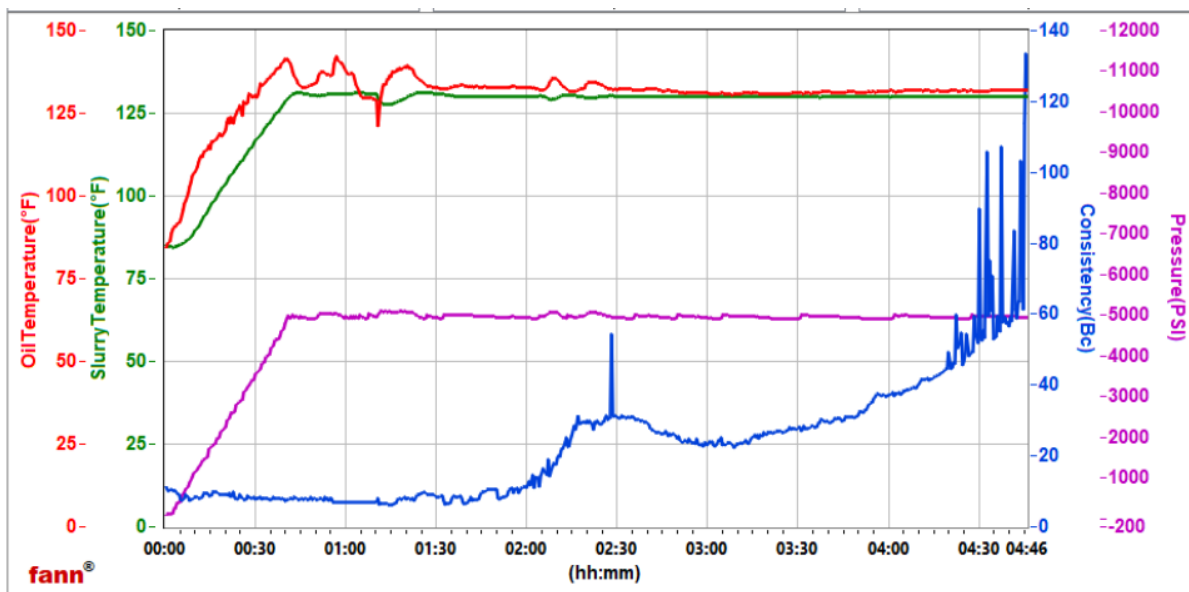
Operation Test Results Request ID 2944512/2

Mixability (0 - 5) - 0 is not mixable, Request Test ID:42065105 21/NOV/2025

Mixability Rating (0 - 5) Avg. RPM Mixing Under Load (~12,000)
5 12000

Thickening Time - ON-OFF-ON, Request Test ID:42065443 21/NOV/2025

Test Temp. (degF)	Pressure (psi)	Reached In (min)	30 BC (HH:MM)	40 BC (HH:MM)	70 BC (HH:MM)	100 BC (HH:MM)	Start BC	Static Period (min)	Stirring Before Stop (min)
130	5000	40	03:42	04:10	04:45	04:45	11	15	55



HALLIBURTON

Rockies, Brighton

Lab Results- Tail

Job Information

Request/Slurry	2943602/1	Rig Name	Precision 460	Date	16/NOV/2025
Submitted By	Christopher Robert Nettles	Job Type	Intermediate Casing	Bulk Plant	Brighton
Customer	Tiberius Energy Services LLC	Location	Adams	Well	Totem #30

Well Information

Casing/Liner Size	7 in / 177.8 mm	Depth MD	2361 m / 7747 ft	BHST	88°C / 190°F
Hole Size	8.75 in / 222.25 mm	Depth TVD	2221 m / 7286 ft	BHCT	54°C / 130°F
Press.	345 bar / 5000 psi				

Cement Information - Tail Design ✓

Conc	UOM	Cement/Additive	Cement Properties	
		ElastiCem	Slurry Density	13.2 lbm/gal
0.2	% BWOC	SUPER CBL	Slurry Yield	1.68 ft ³ /sack
0.55	% BWOC	HR-5	Water Requirement	7.92 gal/sack
1.7	lb/bbl	BridgeMaker II LCM	Total Mix Fluid	7.92 gal/sack

Thickening Time - ON-OFF-ON, Request Test ID:42054884 18/NOV/2025

Test Temp. (degF)	Pressure (psi)	Reached In (min)	30 BC (HH:MM)	40 BC (HH:MM)	70 BC (HH:MM)	100 BC (HH:MM)	Start BC	Static Period (min)	Stirring Before Stop (min)
130	5000	40	03:39	03:47	03:49	03:49	18	10	55

