



**HALLIBURTON** | Cementing

DESIGN, DELIVER, AND VALIDATE  
SUSTAINABLE BARRIERS

**TAILORED**

to

MINIMIZE RISK  
and

MAXIMIZE PRODUCTION.

# HALLIBURTON

## POST JOB SUMMARY

Customer Name: TIBERIUS ENERGY SERVICES  
LLC-EBUS

Submitted By: Javier VargasMachado

Date: 17-Nov-2025

Well Name: Totem #30

Job: SURFACE CASING

Rig: PRECISION 460

SO#: 0910447047

**Objectives**

Objective	Justification	Comments
<b>HSE Objective</b>	There are to be no accidents or incidents concerning any cementing operation and no harm is to be caused to the environment. Cementing jobs are to be conducted in accordance with Halliburton’s Health, Safety and Environmental Standards.	
<b>Top of Cement (TOC)</b>	Required cement to surface. 200sks of neat G to have enough for 2x100sks Top Off. If cement falls immediately or is not at the surface, pump the top job at this time. Otherwise, customer will monitor and pump all top jobs for all wells at a later date, if needed.	Reported 72bbbls of cement returns to surface, waited 2 hours to see if the cement falls however stayed at level
<b>TOC (tail)</b>	500' of height	Job pumped as planned rates and volumes
<b>Density Performance</b>	Weight over rate	Weight verified via pressurized mud scale
<b>Density Performance</b>	Weight over rate	Weight verified via pressurized mud scale

**Fluids Pumped**

Stage No	Description	Density (ppg)	Rate (bbl/min)	Yield (ft <sup>3</sup> /sk)	Water Req. (gal/sk)	Volume (bbl)
1	Drilling Fluid (Mud)					
	Bottom Plug					
2	Spacer/Flush	8.33	6.0			40.0
3	Cement	13.0	6.0	1.925	10.69	199.0
4	Cement	15.8	6.0	1.17	5.14	70.0
	Top Plug/Start Displacement					
5	Mud	8.5	6.0			152.0

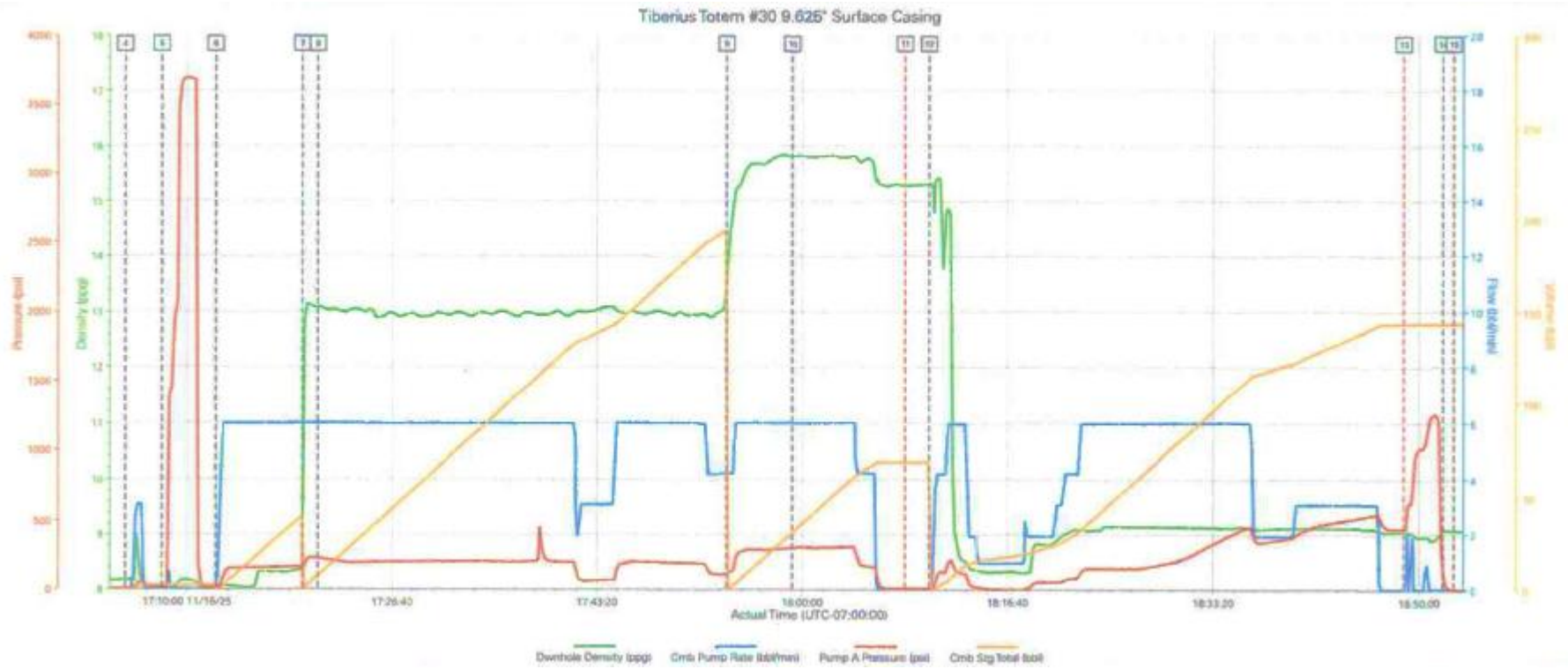
**Job Log**

Seq #	Graph Label	Time / Date	Comments
1	Call Out	16-Nov-2025 07:00	Crew called out @ 0600 November 16th 2025.
2	Arrive At Loc	16-Nov-2025 13:00	Crew arrived on location.
3	Pre-Job Safety Meeting	16-Nov-2025 17:30	Pre-Job safety meeting with rig crew to discuss job details.
4	Start Job	16-Nov-2025 18:04	Start recording job data.
5	Test Lines	16-Nov-2025 18:07	Test lines to 3 500 psi. Test KO 500 psi 5th gear stall 2 200 psi.
6	Drop Bottom Plug	16-Nov-2025 18:12	Drop Bottom Plug.
7	Pump Lead Cement	16-Nov-2025 18:19	Pumped 580 sks SwiftCem 199 bbls 13.0 lb/gal 1.93 ft <sup>3</sup> /sk 10.69 gal/sk. Pump rate 6 bbls/min @ 210 psi. HOL calculated @ 1 255' TOL @ Surface.
8	Check Weight	16-Nov-2025 18:20	Density verified using pressurized mud scales.
9	Pump Tail Cement	16-Nov-2025 18:53	Pumped 335 sks HalCem 70 bbls 15.8 lb/gal 1.17 ft <sup>3</sup> /sk 5.14 gal/sk. Pump rate 6 bbls/min @ 302 psi. HOT calculated @ 763' TOT @ 1 255'.
10	Check Weight	16-Nov-2025 18:59	Density verified using pressurized mud scales.
11	Drop Top Plug	16-Nov-2025 19:08	Top plug left plug container witnessed by company man.
12	Pump Displacement	16-Nov-2025 19:10	Pump 152 bbls WBM with 20 bbls fresh water prior to mud. Cement back to surface @ 80 bbls into displacement. 72 bbls cement to surface.
13	Bump Plug	16-Nov-2025 19:48	Bump plug @ 540 psi. Took pressure 500 psi over final circulating pressure.
14	Check Floats	16-Nov-2025 19:51	Released pressure to check floats got 3 bbls back.

---

15	End Job	16-Nov-2025 19:52	Stop recording job data.
16	Rig Down Lines	16-Nov-2025 20:15	Rig down bulk and mixing equipment.
17	Crew Leave Location	16-Nov-2025 22:30	Crew departed location.

**Job Chart**



**Lab Reports**

**HALLIBURTON**

Rockies, Brighton

Lab Results - Lead

**Job Information**

Request/Slurry	2925608/1	Rig Name		Date	26/JUL/2025
Submitted By	Javier Vargas Machado	Job Type	Surface Casing	Bulk Plant	Brighton
Customer	Tiberius Energy Services LLC	Location	Adams	Well	Totem #28

**Well Information**

Casing/Liner Size	9.625 in	Depth MD	2000 ft	BHST	100°F
Hole Size	13.5 in	Depth TVD	2000 ft	BHCT	89°F
Press.	1200 psi				

**Cement Information - Lead Design**

Conc	UOM	Cement/Additive	Cement Properties		
100	% BWOC	SwiftCem	Slurry Density	13.0	lbm/gal
10.69	gal/sack	Field (Fresh) Water	Slurry Yield	1.93	ft <sup>3</sup> /sack
			Water Rqmt	10.69	gal/sack
			Water Source	Field Water	

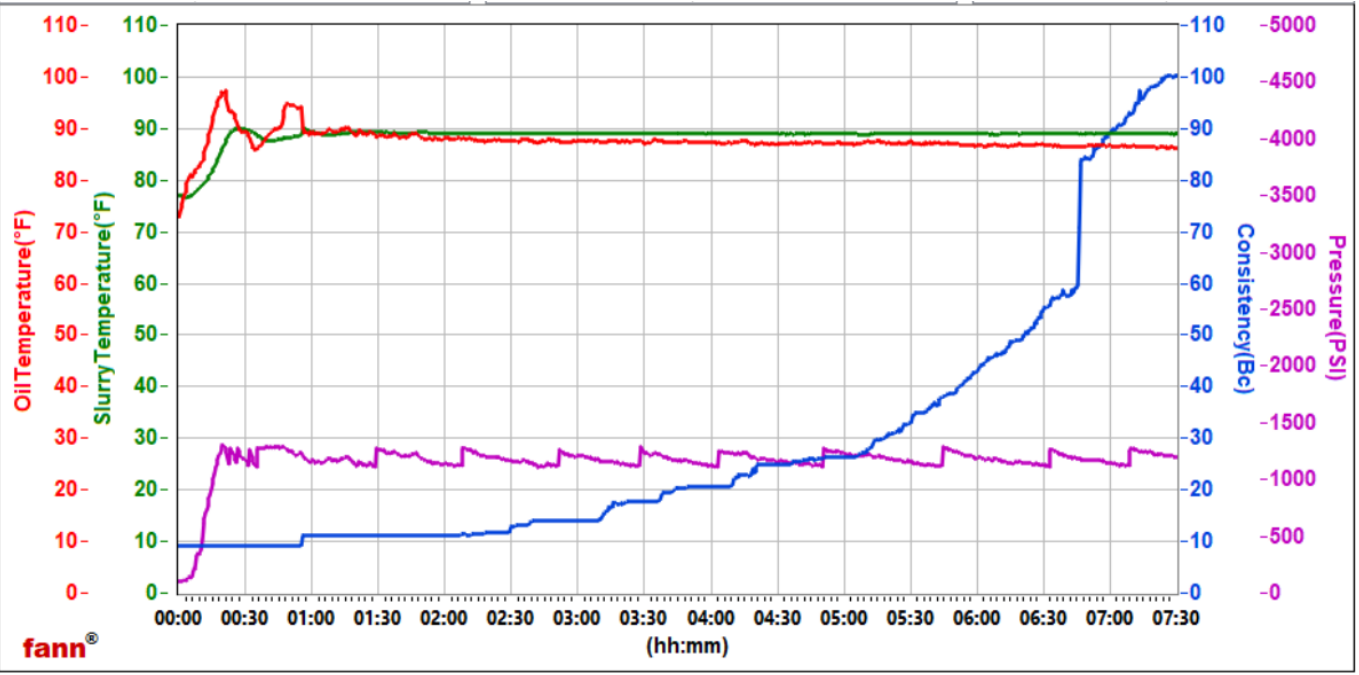
**Operation Test Results Request ID 2925608/1**

Mixability (0 - 5) - 0 is not mixable, Request Test ID:41752561 27/JUL/2025

Mixability Rating (0 - 5) Avg. RPM Mixing Under Load (~12,000)  
 5 12000

**Thickening Time, Request Test ID:41752565 28/JUL/2025**

Temp. (degF)	Pressure (psi)	Reached In (min)	Start BC	30 BC (HH:MM)	40 BC (HH:MM)	50 BC (HH:MM)	70 BC (HH:MM)	100 BC (HH:MM)
89	1200	20	9	05:18	05:52	06:21	06:46	07:26



**HALLIBURTON**

Rockies, Brighton

Lab Results - Tail

**Job Information**

Request/Slurry	2925609/1	Rig Name		Date	26/JUL/2025
Submitted By	Javier Vargas Machado	Job Type	Surface Casing	Bulk Plant	Brighton
Customer	Tiberius Energy Services LLC	Location	Adams	Well	Totem #28

**Well Information**

Casing/Liner Size	9.625 in	Depth MD	2000 ft	BHST	100°F
Hole Size	13.5 in	Depth TVD	2000 ft	BHCT	89°F
Press.	1500 psi				

**Cement Information - Tail Design**

Conc	UOM	Cement/Additive	Cement Properties		
100	% BWO	HalCem	Slurry Density	15.8	lbm/gal
5.14	gal/sack	Field Water	Slurry Yield	1.17	ft <sup>3</sup> /sack
1	% BWO	CaCl <sub>2</sub>	Water Rqmt	5.14	gal/sack
2.4	lb/bbl	BridgeMaker II LCM	Water Source	Field Water	

**Operation Test Results Request ID 2925609/1**

Mixability (0 - 5) - 0 is not mixable, Request Test ID:41752567 27/JUL/2025

Mixability Rating (0 - 5) Avg. RPM Mixing Under Load (~12,000)  
5 12000

**Thickening Time, Request Test ID:41752571 27/JUL/2025**

Temp. (degF)	Pressure (psi)	Reached In (min)	Start BC	30 BC (HH:MM)	40 BC (HH:MM)	50 BC (HH:MM)	70 BC (HH:MM)	100 BC (HH:MM)
89	1500	20	6.9	01:55	02:16	02:30	02:47	03:12

