



HALLIBURTON | Cementing

DESIGN, DELIVER, AND VALIDATE

SUSTAINABLE BARRIERS

TAILORED

to

MINIMIZE RISK

and

MAXIMIZE PRODUCTION.

HALLIBURTON

POST JOB SUMMARY

Customer Name: TIBERIUS ENERGY SERVICES
LLC-EBUS

Submitted By: Christopher Nettles

Date: 06-Nov-2025

Well Name: Totem 29

Job: INTERMEDIATE CASING

Rig: PRECISION 460

SO#: 0910433708

Objectives

Objective	Justification	Comments
HSE Objective	There are to be no accidents or incidents concerning any cementing operation and no harm is to be caused to the environment. Cementing jobs are to be conducted in accordance with Halliburton’s Health, Safety and Environmental Standards.	
Top of Cement (TOC)	Top of cement to surface with 35%OHXS	Job pumped as planned rates and volume, bumped plug at calculated displacement. Reported losses while displacing, observed approximate 10bbls of cement interface before bumping plug.
Density Performance	Weight over Rate	Met. Verified with pressurized mud scale
Density Performance	Weight over Rate	Met. Verified with pressurized mud scale

Fluids Pumped

Stage No	Description	Density (ppg)	Rate (bbl/min)	Yield (ft ³ /sk)	Water Req. (gal/sk)	Volume (bbl)
1	Drilling Fluid (Mud)					
2	Spacer/Flush	11.5	7.0	2.289	14.36	50.0
3	Cement	12.5	8.0	2.021	10.25	161.97
4	Cement	13.2	8.0	1.683	7.92	94.42
	Top Plug/Start Displacement					
5	Mud	10.5	4.76			294.0

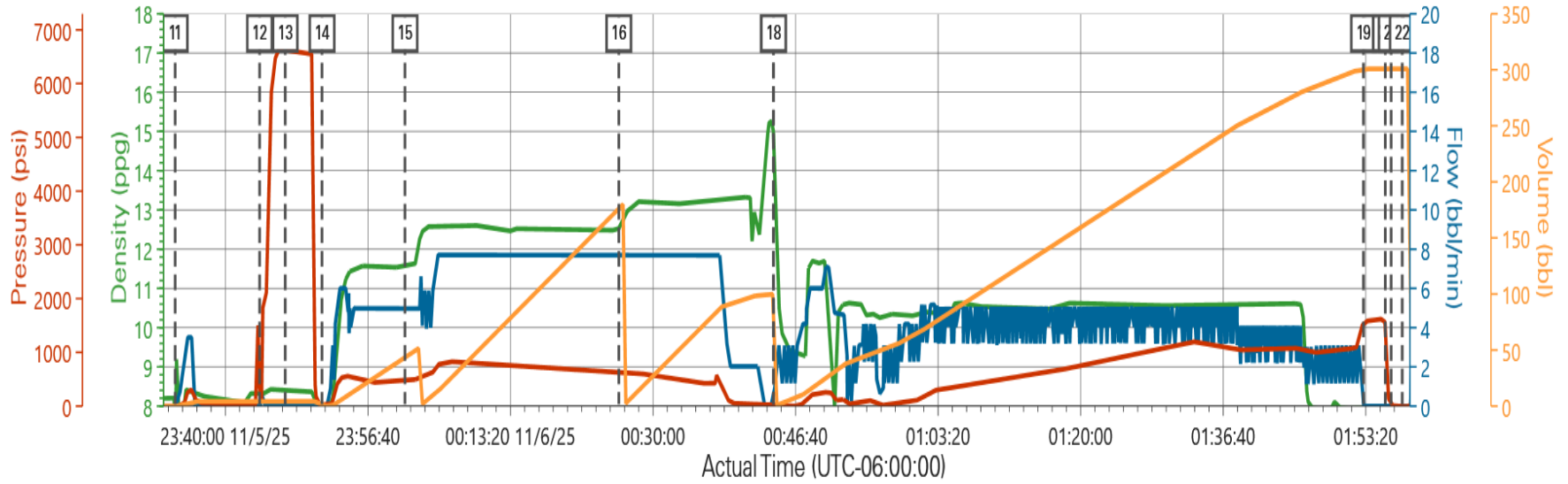
Job Log

Seq #	Graph Label	Time / Date	Comments
1	Call Out	05-Nov-2025 10:00	Tiberius - Precision 460 - Totem 29 - Intermediate 7" CASING JOB - On location 11/5/2025 @ 15:00 PM
2	Safety Meeting - Service Center or other Site	05-Nov-2025 13:20	Review Journey Management And Route With Crew Members
3	Depart from Service Center or Other Site	05-Nov-2025 13:30	Depart From Yard
4	Arrive At Loc	05-Nov-2025 15:00	Talk To Company Greg Miller : TD = 7776' TP = 7783' ST = 95' OH = 8 & 3/4" CSG = 7" 26# Previous Casing 9 5/8" 36# Set @ 2018' WF = OBM @ 10.3 # Test Water = pH - 7 Chlorides - < 290 ppm 74 F.
5	Safety Meeting - Assessment of Location	05-Nov-2025 15:10	Spot Equipment
6	Pre-Rig Up Safety Meeting	05-Nov-2025 15:20	Review JSA With Crew Members
7	Rig-Up Equipment	05-Nov-2025 15:25	Rigged Up All Iron And Hoses Needed For CMT Job With No Issues Or Incidents.
8	Rig-Up Completed	05-Nov-2025 23:00	Rigged Up All Iron And Hoses Needed For CMT Job With No Issues Or Incidents.
9	Safety Meeting - Pre Job	05-Nov-2025 23:50	Review Job Procedure And JSA With Rig Hands Co. Man And HES Members
10	Rig-Up Hose To Rlg Lines	06-Nov-2025 00:20	Rig Up Plug Container And Rig Floor To Circulate With Rig Pumps. Rig Circulated From 21:45 PM To 23:20 PM At 336 GPM (8 BPM) With 820 psi Good Returns.
11	Start Job	06-Nov-2025 00:34	Started Recording All Data
12	Test Lines	06-Nov-2025 00:44	Tested Electronic Kickouts Tested Lines To 6740 PSI Max
13	Drop Bottom Plug	06-Nov-2025 00:47	Verified Plug Dropped With Company Rep.
14	Pump Spacer 1	06-Nov-2025 00:51	Pumped Tuned Prime Spacer @ 8 BPM 11.5 PPG 50 BBLs 2.289 Y 14.36 WR 122.65 SKS 1761 Mix Gallons

15	Pump Lead Cement	06-Nov-2025 01:01	Pumped ElastiCem Lead CMT @ 8 BPM With Avg Pressure Of 800 PSI 12.5 PPG 161.97 BBLs 2.021 Y 10.25 WR 450 SKS 4613 Mix Gallons Top Of Cmt Set At Surface
16	Pump Tail Cement	06-Nov-2025 01:26	Pumped ElastiCem Tail CMT @ 8 BPM With Avg Pressure Of 700 PSI 13.2 PPG 94.42 BBLs 1.683 Y 7.92 WR 315 SKS 2495 Mix Gallons Estimated Top Of Cmt Set At 4388.31"
17	Drop Top Plug	06-Nov-2025 01:44	Dropped Top Plug With Company Rep.
18	Pump Displacement	06-Nov-2025 01:44	Pumped Displacement Total Of 294 BBLs 12348 Gals At 5 BPM Avg With 700 -1000 PSI First 10 BBLs Fresh Water Wash Up. Last 20 BBLs Fresh Water. At 230 Away Returns Began To Recid. Dropped 25% At 270 Returns Dropped To 1 BPM Diverted Lines To High-Wall At 270 For Spacer. At 286 CMT Interface.
19	Bump Plug	06-Nov-2025 02:53	Bumped Plug At 3 BPM With Final Circulation Pressure 1100 Brought Pressure To 1633 PSI
20	Bleed Casing	06-Nov-2025 02:55	Bled Pressure Back To Zero And Got 2 bbls Back
21	Check Floats	06-Nov-2025 02:56	Floats Held Good.
22	End Job	06-Nov-2025 02:57	Stopped Recording All Data.
23	Pre-Rig Down Safety Meeting	06-Nov-2025 03:05	Review JSA With HES Crew Members
24	Rig-Down Equipment	06-Nov-2025 03:10	Rig Down Iron Plug Container And Hoses Used On Job
25	Rig-Down Completed	06-Nov-2025 03:40	All Equipment Rigged Down With No Issues Or Incidents
26	Safety Meeting - Departing Location	06-Nov-2025 03:45	Review Journey Management And Route With Crew Members
27	Depart Location for Service Center or Other Site	06-Nov-2025 04:00	Depart location

Job Chart

Tiberius - Precision 460 - Totem 29 - Intermediate



Dwnhole Density (ppg) 7.87 Cmb Pump Rate (bbl/min) 0 Pump A Pressure (psi) -7.59 Cmb Stg Total (bbl) 17.02

Lab Reports

HALLIBURTON

Rockies, Brighton

Lab Results - Lead

Job Information

Request/Slurry	2941121/1	Rig Name	Precision 460	Date	01/NOV/2025
Submitted By	Christopher Nettles	Job Type	Intermediate Casing	Bulk Plant	Brighton
Customer	Tiberius Energy Services LLC	Location	Adams	Well	Totem #29

Well Information

Casing/Liner Size	7 in	Depth MD	7747 ft	BHST	190°F
Hole Size	8.75 in	Depth TVD	7286 ft	BHCT	130°F
Press.	5000 psi				

Cement Information - Lead Design ✓

Conc	UOM	Cement/Additive	Cement Properties		
		ElastiCem	Slurry Density	12.5	lbm/gal
10.25	gal/sack	Field Water	Slurry Yield	2.02	ft3/sack
0.1	% BWOC	SUPER CBL	Water Rqmt	10.25	gal/sack

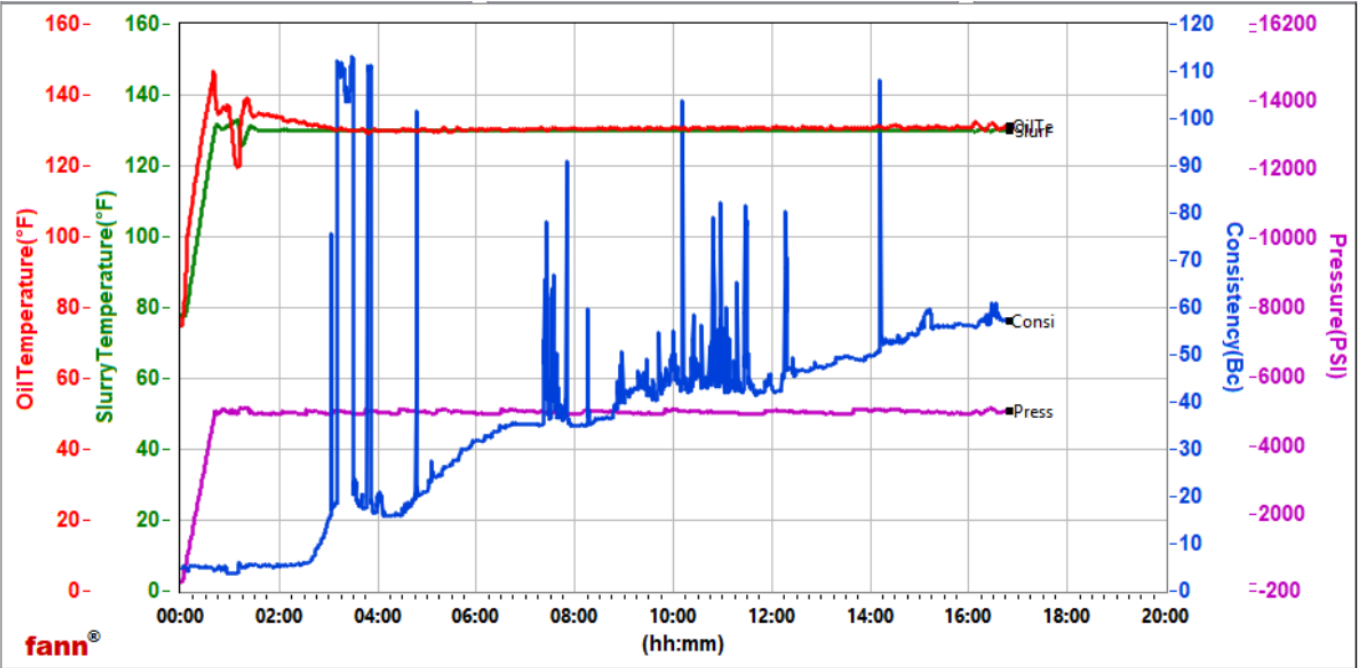
Operation Test Results Request ID 2941121/1

Mixability (0 - 5) - 0 is not mixable, Request Test ID:42008703 03/NOV/2025

Mixability Rating (0 - 5) Avg. RPM Mixing Under Load (~12,000)
 5 12000

Thickening Time - ON-OFF-ON, Request Test ID:42008704 03/NOV/2025

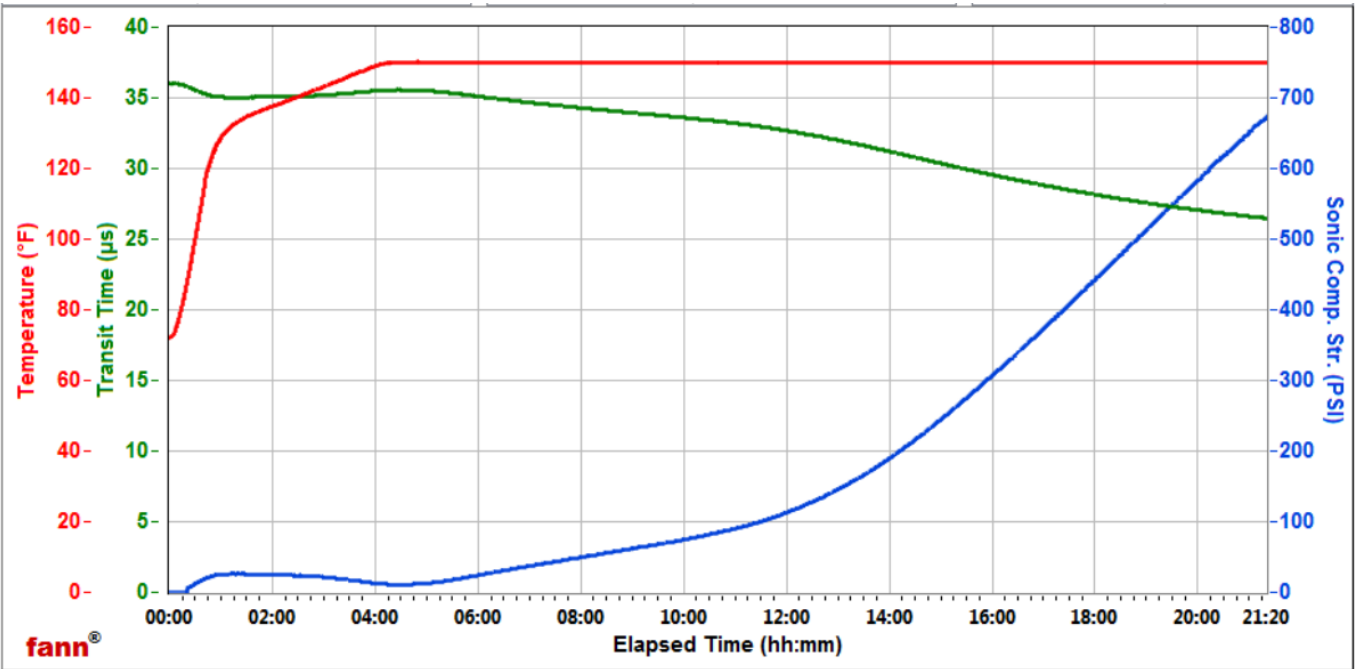
Test Temp. (degF)	Pressure (psi)	Reached In (min)	30 BC (HH:MM)	40 BC (HH:MM)	50 BC (HH:MM)	Start BC	Static Period (min)	Stirring Before Stop (min)	Termination Time (HH:MM)	Termination BC
130	5000	40	05:44	08:57	14:03	4.3	15	55	14:03	56.7



Operation Test Results Request ID 2938214/1

UCA Comp. Strength, Request Test ID:41960411, Historical Data 18/OCT/2025

End Temp. (degF)	Pressure (psi)	50 psi (HH:MM)	100 psi (HH:MM)	500 psi (HH:MM)	8hr CS (psi)	12 hr CS (psi)	16 hr CS (psi)
150	800	08:03	11:29	18:49	50	113	308



HALLIBURTON

Rockies, Brighton

Lab Results - Tail

Job Information

Request/Slurry	2941122/1	Rig Name	Precision 460	Date	01/NOV/2025
Submitted By	Christopher Nettles	Job Type	Intermediate Casing	Bulk Plant	Brighton
Customer	Tiberius Energy Services LLC	Location	Adams	Well	Totem #29

Well Information

Casing/Liner Size	7 in	Depth MD	7747 ft	BHST	190°F
Hole Size	8.75 in	Depth TVD	7286 ft	BHCT	130°F
Press.	5000 psi				

Cement Information - Tail Design ✓

Conc	UOM	Cement/Additive	Cement Properties	
		ElastiCem	Slurry Density	13.2 lbm/gal
7.92	gal/sack	Field Water	Slurry Yield	1.68 ft ³ /sack
5	% BWOC	Microbond M	Water Rqmt	7.92 gal/sack
0.2	% BWOC	SUPER CBL		
0.55	% BWOC	HR-5		
1.7	lb/bbl	BridgeMaker II LCM		

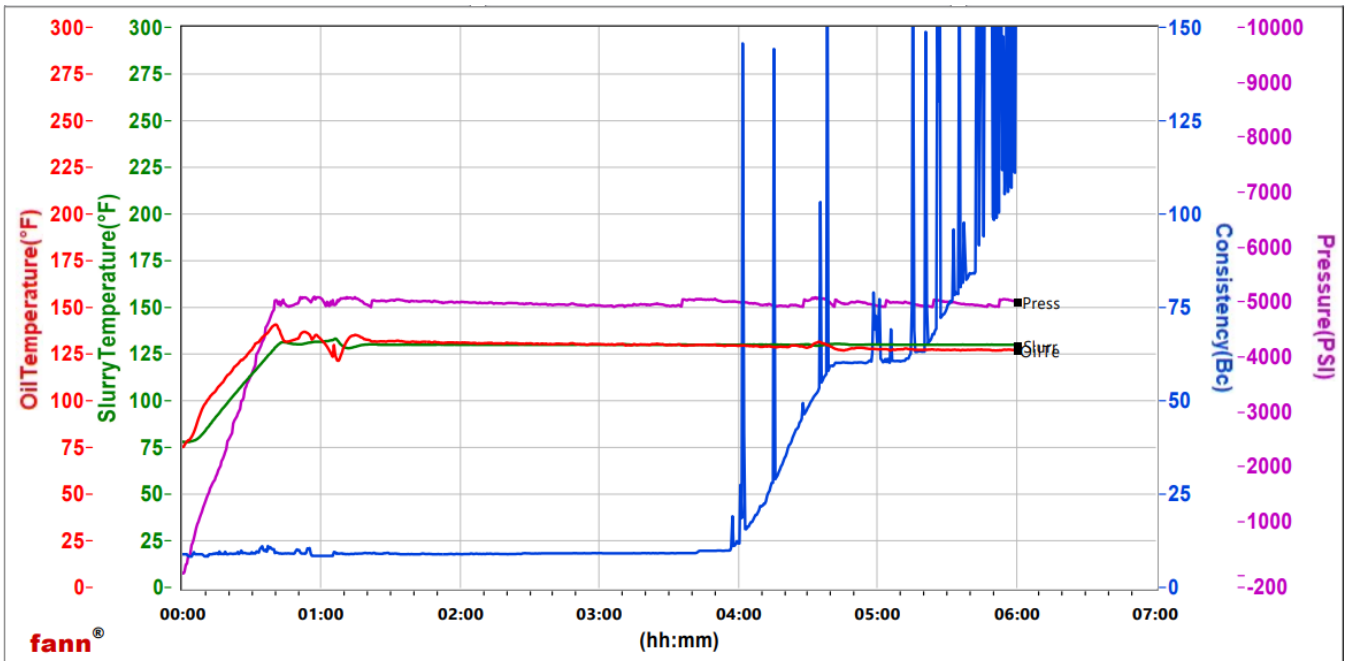
Operation Test Results Request ID 2941122/1

Mixability (0 - 5) - 0 is not mixable, Request Test ID:42008705 03/NOV/2025

Mixability Rating (0 - 5) Avg. RPM Mixing Under Load (~12,000)
 5 12000

Thickening Time - ON-OFF-ON, Request Test ID:42008706 04/NOV/2025

Test Temp. (degF)	Pressure (psi)	Reached In (min)	30 BC (HH:MM)	40 BC (HH:MM)	50 BC (HH:MM)	70 BC (HH:MM)	100 BC (HH:MM)	Start BC	Static Period (min)	Stirring Before Stop (min)
130	5000	40	04:17	04:24	04:32	05:25	05:49	10	10	55



Pilot Test Results Request ID 2933423/2

UCA Comp. Strength, Request Test ID:41886953, Historical Data 21/SEP/2025

End Temp. (degF)	Pressure (psi)	50 psi (HH:MM)	100 psi (HH:MM)	500 psi (HH:MM)	1000 psi (HH:MM)	8hr CS (psi)	12 hr CS (psi)	16 hr CS (psi)	24 hr CS (psi)	48 hr CS (psi)	72 hr CS (psi)
160	800	08:56	10:02	14:02	17:23	0	236	800	1725	2336	2437

