



**HALLIBURTON** | Cementing

DESIGN, DELIVER, AND VALIDATE

SUSTAINABLE BARRIERS

**TAILORED**

to

MINIMIZE RISK

and

MAXIMIZE PRODUCTION.

# HALLIBURTON

## POST JOB SUMMARY

Customer Name: TIBERIUS ENERGY SERVICES  
LLC-EBUS

Submitted By: Javier Vargas

Date: 31-Oct-2025

Well Name: Totem 29

Job: SURFACE CASING

Rig: PRECISION 460

SO#: 0910418581

**Objectives**

Objective	Justification	Comments
<b>HSE Objective</b>	There are to be no accidents or incidents concerning any cementing operation and no harm is to be caused to the environment. Cementing jobs are to be conducted in accordance with Halliburton’s Health, Safety and Environmental Standards.	
<b>Top of Cement (TOC)</b>	Required cement to surface. 200sks of neat G to have enough for 2x100sks Top Off. If cement falls immediately or is not at the surface, pump the top job at this time. Otherwise, customer will monitor and pump all top jobs for all wells at a later date, if needed.	-70bbls of cement back to surface, waited 2 hours to see if the cement falls however stayed at level -Job pumped as planed rates and volumes with no losses reported throughout the entire job
<b>TOC (tail)</b>	500' of height	Pressure matched design
<b>Density Performance</b>	Weight over rate	Met. Verified while pumping with a pressurized mud scale
<b>Density Performance</b>	Weight over rate	Met. Verified while pumping with a pressurized mud scale

**Fluids Pumped**

Stage No	Description	Density (ppg)	Rate (bbl/min)	Yield (ft <sup>3</sup> /sk)	Water Req. (gal/sk)	Volume (bbl)
1	Drilling Fluid (Mud)		0.0			0.0
	Bottom Plug					
2	Fresh Water	8.33	4.0			40.0
3	Cement	13.0	5.0	1.925	10.69	198.9
4	Cement	15.8	4.5	1.17	5.14	69.8
	Top Plug/Start Displacement					
5	OBM	9.33	3.4			153.0

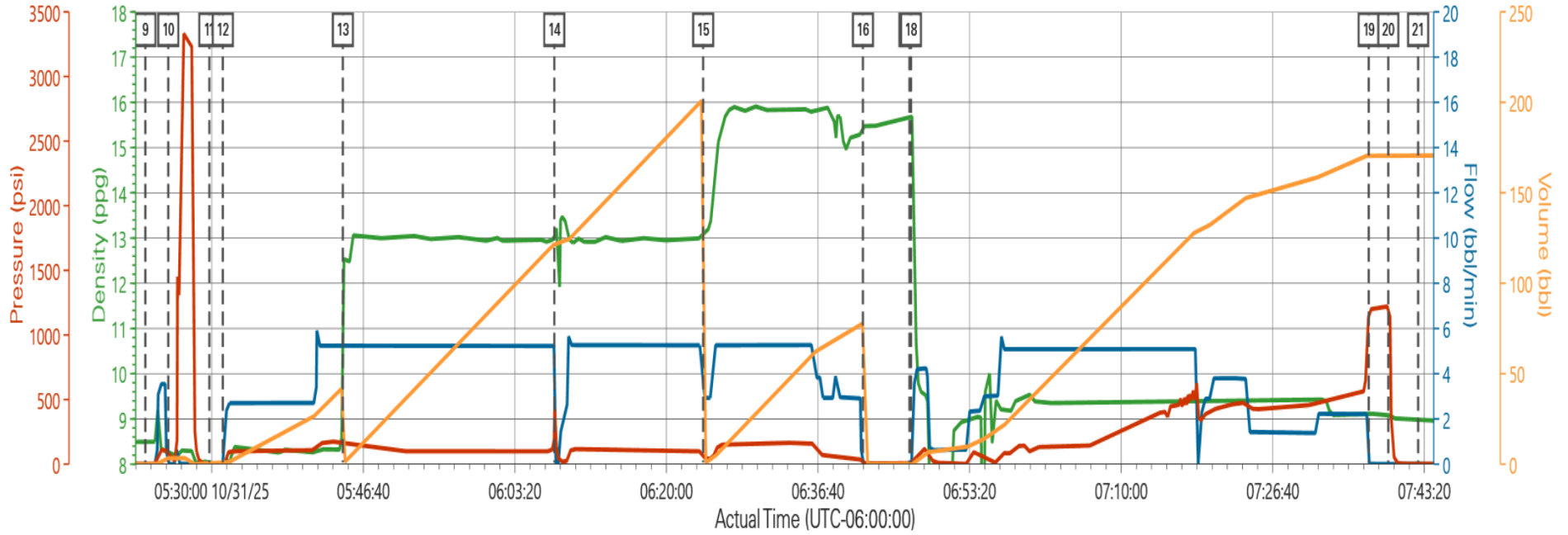
**Job Log**

Seq #	Graph Label	Time / Date	Comments
1	Call Out	30-Oct-2025 23:00	CREW CALLED OUT AT 2200 HRS 10/30/2025 REQUESTED ON LOCATION 0400 HOURS 10/31/2025
2	Crew Leave Yard	31-Oct-2025 02:00	CREW LEAVES YARD
3	Arrive At Loc	31-Oct-2025 03:30	CREW ARRIVES AT LOCATION
4	Pre-Rig Up Safety Meeting	31-Oct-2025 03:45	DISCUSS HAZARDS OF RIGGING UP.
5	Rig-Up Equipment	31-Oct-2025 03:50	RIG UP
6	Rig-Up Completed	31-Oct-2025 05:10	RIG UP COMPLETED
7	Pre-Job Safety Meeting	31-Oct-2025 05:25	DISCUSS HAZARDS OF JOB HAZARDS OF HALLIBURTON EQUIPMENT HAZARDS OF PRESSURE. RIG CIRCULATES APPROX 1100 BBLS / 8 BPM / 120 PSI
8	Start Job	31-Oct-2025 06:14	
9	Start Job	31-Oct-2025 06:22	BEGIN RECORDING DATA
10	Test Lines	31-Oct-2025 06:25	TEST HES LINES 3400 PSI
11	Drop Bottom Plug	31-Oct-2025 06:29	HES BOTTON PLUG
12	Pump Spacer 1	31-Oct-2025 06:31	40 BBLS FRESH WATER W / 1 LB GREEN DYE
13	Pump Lead Cement	31-Oct-2025 06:44	580 SACKS SWIFTCEM LEAD CEMENT. 198.9 BBLS 13 PPG TOLC=0'
14	Other	31-Oct-2025 07:07	BOTTOM PLUG LANDED

15	Pump Tail Cement	31-Oct-2025 07:24	335 SACKS HALCEM TAIL CEMENT 69.8 BBLS 15.8 PPG ESTIMATED TOTC=1400'
16	Shutdown	31-Oct-2025 07:41	SHUTDOWN TO DROP PLUG
17	Drop Top Plug	31-Oct-2025 07:46	HES TOP PLUG
18	Pump Displacement	31-Oct-2025 07:46	153 BBLS OBM DISPLACEMENT. APPROX 9.4 PPG
19	Bump Plug	31-Oct-2025 08:37	FCP 550 PSI 2 BPM BUMP PRESSURE 1100 PSI.
20	Check Floats	31-Oct-2025 08:39	RELEASE PRESSURE FLOATS HOLD 1 BBL BACK TO PUMP TRUCK. APPROX 70 BBLS CEMENT TO SURFACE
21	End Job	31-Oct-2025 08:42	STOP RECORDING DATA
22	Pre-Rig Down Safety Meeting	31-Oct-2025 09:00	DISCUSS HAZARDS OF RIGGING DOWN
23	Rig-Down Equipment	31-Oct-2025 09:05	RIG DOWN
24	Rig-Down Completed	31-Oct-2025 10:00	RIG DOWN EQUIPMENT
25	Crew Leave Location	31-Oct-2025 11:00	CREW DEPARTS LOCATION

Job Chart

Tiberius Totem 29 Cement 9.625 Surface Casing



— Dnwhole Density (ppg) -0.04   
 — Cmb Pump Rate (bbl/min) 0   
 — Pump A Pressure (psi) -1.24   
 — Cmb Stg Total (bbl) 170.63

**Lab Reports**

**HALLIBURTON**

Rockies, Brighton

Lab Results- Lead

**Job Information**

Request/Slurry	2927094/1	Rig Name	Precision 460	Date	05/AUG/2025
Submitted By	Javier Vargas Machado	Job Type	Surface Casing	Bulk Plant	Brighton
Customer	Tiberius Energy Services LLC	Location	Adams	Well	Totem #29

**Well Information**

Casing/Liner Size	9.625 in / 244.475 mm	Depth MD	610 m / 2000 ft	BHST	38°C / 100°F
Hole Size	13.5 in / 342.9 mm	Depth TVD	610 m / 2000 ft	BHCT	32°C / 89°F
Press.	83 bar / 1200 psi				

**Cement Information - Lead Design**

Conc	UOM	Cement/Additive	Cement Properties	
		SwiftCem	Slurry Density	13 lbm/gal
			Slurry Yield	1.93 ft <sup>3</sup> /sack
			Water Requirement	10.69 gal/sack
			Total Mix Fluid	10.69 gal/sack

**Operation Test Results Request ID 2927094/1**

Mixability (0 - 5) - 0 is not mixable, Request Test ID:41777998 28/OCT/2025

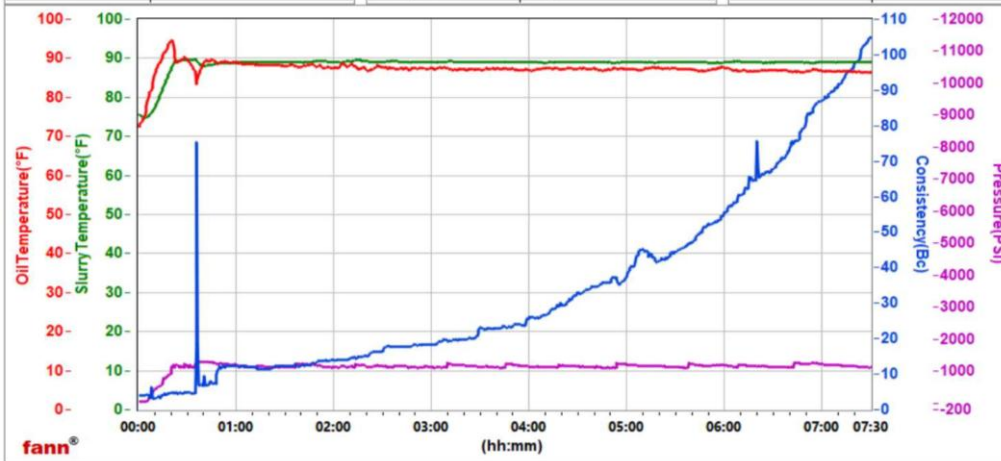
Mixability Rating (0 - 5) Avg. RPM Mixing Under Load (~12,000)  
5 12000

**Thickening Time, Request Test ID:41777999 29/OCT/2025**

Temp. (degF)	Pressure (psi)	Reached In (min)	Start BC	30 BC (HH:MM)	40 BC (HH:MM)	50 BC (HH:MM)	70 BC (HH:MM)	100 BC (HH:MM)
89	1200	20	5	04:23	05:02	05:46	06:34	07:24

brighton

Fields	Values	Fields	Values	Events	Results
Project Name	2927094-1 TIBERIUS LEAD	Rig			
SW Version	1.0	Casing/Liner Size			
Test ID	TIBERIUS LEAD	Job Type			
Request ID		Cement Weight			
Tested by	RR	Comments	Standard		
Customer		Date Time	10/28/2025 10:22:03.685		
Well No		Temp. Units	degF		



# HALLIBURTON

Rockies, Brighton

Lab Results- Tail

**Job Information**

Request/Slurry	2927095/1	Rig Name	Precision 460	Date	05/AUG/2025
Submitted By	Javier Vargas Machado	Job Type	Surface Casing	Bulk Plant	Brighton
Customer	Tiberius Energy Services LLC	Location	Adams	Well	Totem #29

**Well Information**

Casing/Liner Size	9.625 in / 244.475 mm	Depth MD	610 m / 2000 ft	BHST	38°C / 100°F
Hole Size	13.5 in / 342.9 mm	Depth TVD	610 m / 2000 ft	BHCT	32°C / 89°F
Press.	103 bar / 1500 psi				

**Cement Information - Tail Design** ✓

Conc	UOM	Cement/Additive	Cement Properties	
		HalCem	Slurry Density	15.8 lbm/gal
		CaCl2 (Calcium Chloride) 94-97 % Salt	Slurry Yield	1.17 ft3/sack
1	% BWOC		Water Requirement	5.14 gal/sack
2.4	lb/bbl	BridgeMaker II LCM	Total Mix Fluid	5.14 gal/sack

**Operation Test Results Request ID 2927095/1**

Mixability (0 - 5) - 0 is not mixable, Request Test ID:41778000 28/OCT/2025

Mixability Rating (0 - 5) Avg. RPM Mixing Under Load (~12,000)  
 5 12000

**Thickening Time, Request Test ID:41998748** 29/OCT/2025

Temp. (degF)	Pressure (psi)	Reached In (min)	Start BC	30 BC (HH:MM)	40 BC (HH:MM)	50 BC (HH:MM)	70 BC (HH:MM)	100 BC (HH:MM)
89	1500	20	17	02:20	02:44	02:59	03:23	03:46

