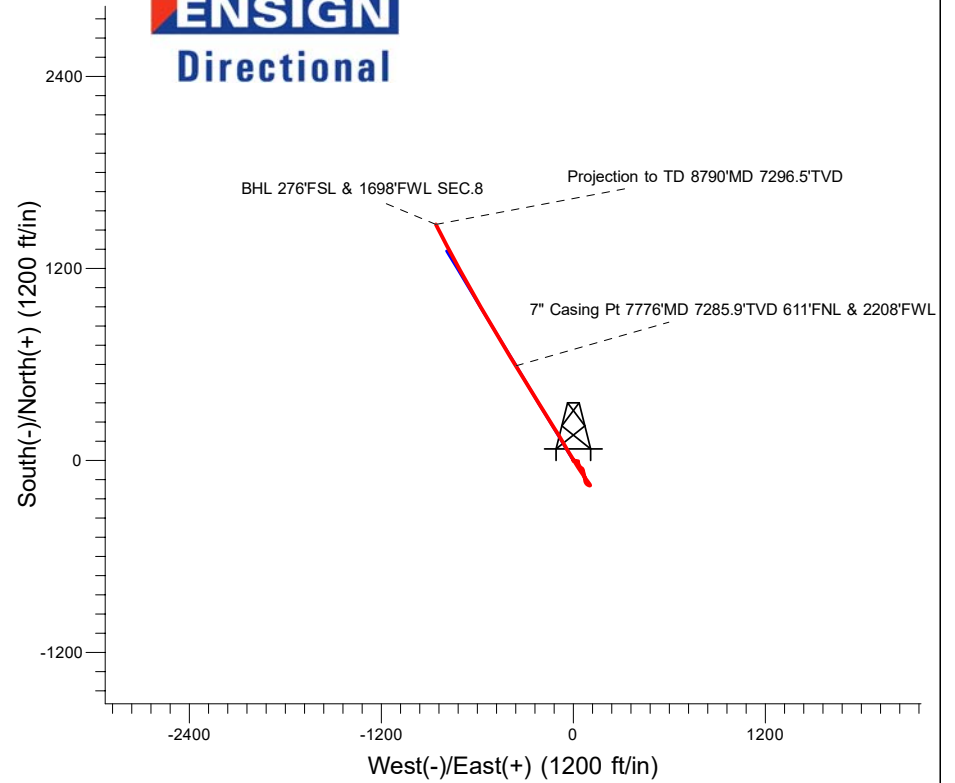
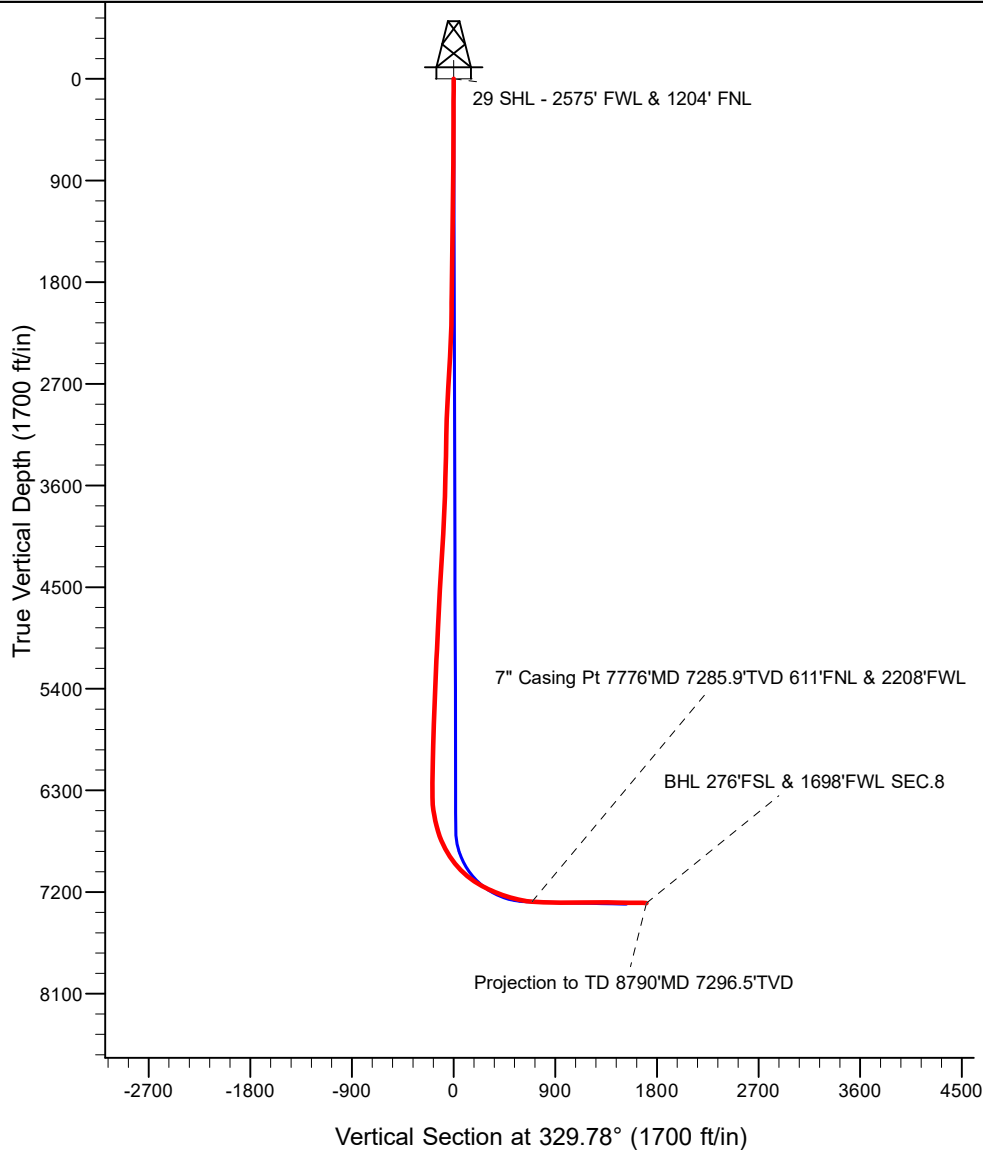


Colorado Interstate Gas

Well Name: Totem 29
 Surface Location: Totem SEC.17
 North American Datum 1983, US State Plane 1983, Colorado Northern Zone
 Ground Elevation: 5186.5
 +N/-S 0.0 +E/-W 0.0 Northing 1201269.68 Easting 3323277.58 Latitude 39.880098 Longitude -104.348063 Slot
 RKB -20' RKB @ 5206.5ft (RKB -20')

FINAL SURVEY 0-8790'MD



LEGEND

- Totem 29, Totem, 29 Design #4 V0
- Survey #1

Projection to TD 8790MD 7296.5'TVD 1474.7N & 859.1'W of SHL

BHL 276'FSL & 1698'FWL SEC.8

ANNOTATIONS

MD	Inc	Azi	TVD	+N/-S	+E/-W	V'Sect	Departure	Annotation
7776.0	84.87	329.12	7285.9	592.2	-360.7	693.3	1097.2	7" Casing Pt 7776'MD 7285.9'TVD 611'FNL & 2208'FWL
8790.0	89.67	332.75	7296.5	1474.7	-859.1	1706.7	2110.9	Projection to TD 8790'MD 7296.5'TVD
8790.0	89.67	332.75	7296.5	1474.7	-859.1	1706.7	2110.9	BHL 276'FSL & 1698'FWL SEC.8



Colorado Interstate Gas

SEC.17-T2S-R62W

Totem SEC.17

Totem 29

Totem

Survey: Survey #1

Standard Survey Report

11 November, 2025

Company:	Colorado Interstate Gas	Local Co-ordinate Reference:	Well Totem 29
Project:	SEC.17-T2S-R62W	TVD Reference:	RKB @ 5206.5ft (RKB -20°)
Site:	Totem SEC.17	MD Reference:	RKB @ 5206.5ft (RKB -20°)
Well:	Totem 29	North Reference:	True
Wellbore:	Totem	Survey Calculation Method:	Minimum Curvature
Design:	Totem	Database:	US_EDM

Project	SEC.17-T2S-R62W, Adams County, Colorado		
Map System:	US State Plane 1983	System Datum:	Mean Sea Level
Geo Datum:	North American Datum 1983		
Map Zone:	Colorado Northern Zone		Using geodetic scale factor

Site	Totem SEC.17				
Site Position:		Northing:	1,199,367.71 usft	Latitude:	39.874950
From:	Lat/Long	Easting:	3,321,226.03 usft	Longitude:	-104.355460
Position Uncertainty:	0.0 ft	Slot Radius:	13-3/16 "	Grid Convergence:	0.74 °

Well	Totem 29					
Well Position	+N/-S	0.0 ft	Northing:	1,201,269.68 usft	Latitude:	39.880098
	+E/-W	0.0 ft	Easting:	3,323,277.59 usft	Longitude:	-104.348063
Position Uncertainty		0.0 ft	Wellhead Elevation:	ft	Ground Level:	5,186.5 ft

Wellbore	Totem				
Magnetics	Model Name	Sample Date	Declination (°)	Dip Angle (°)	Field Strength (nT)
	IGRF2020	07/11/2025	7.15	66.13	51,291.53653154

Design	Totem				
Audit Notes:					
Version:	1.0	Phase:	ACTUAL	Tie On Depth:	0.0
Vertical Section:	Depth From (TVD) (ft)	+N/-S (ft)	+E/-W (ft)	Direction (°)	
	0.0	0.0	0.0	329.78	

Survey Program	Date	11/11/2025			
From (ft)	To (ft)	Survey (Wellbore)	Tool Name	Description	
104.0	8,790.0	Survey #1 (Totem)	MWD	MWD - Standard	

Survey										
Measured Depth (ft)	Inclination (°)	Azimuth (°)	Vertical Depth (ft)	+N/-S (ft)	+E/-W (ft)	Vertical Section (ft)	Dogleg Rate (°/100usft)	Build Rate (°/100usft)	Turn Rate (°/100usft)	
0.0	0.00	0.00	0.0	0.0	0.0	0.0	0.00	0.00	0.00	
29 SHL - 2575' FWL & 1204' FNL										
104.0	0.50	211.25	104.0	-0.4	-0.2	-0.2	0.48	0.48	0.00	
198.0	0.40	185.25	198.0	-1.1	-0.5	-0.7	0.24	-0.11	-27.66	
288.0	0.40	230.25	288.0	-1.6	-0.7	-1.0	0.34	0.00	50.00	
384.0	0.20	134.25	384.0	-1.9	-0.9	-1.2	0.48	-0.21	-100.00	
479.0	0.50	59.25	479.0	-1.8	-0.4	-1.4	0.51	0.32	-78.95	
574.0	0.50	79.25	574.0	-1.5	0.4	-1.5	0.18	0.00	21.05	
668.0	0.80	74.25	668.0	-1.3	1.4	-1.8	0.32	0.32	-5.32	
763.0	1.20	96.25	763.0	-1.2	3.0	-2.6	0.58	0.42	23.16	
858.0	1.50	101.25	857.9	-1.6	5.2	-4.0	0.34	0.32	5.26	

Company:	Colorado Interstate Gas	Local Co-ordinate Reference:	Well Totem 29
Project:	SEC.17-T2S-R62W	TVD Reference:	RKB @ 5206.5ft (RKB -20°)
Site:	Totem SEC.17	MD Reference:	RKB @ 5206.5ft (RKB -20°)
Well:	Totem 29	North Reference:	True
Wellbore:	Totem	Survey Calculation Method:	Minimum Curvature
Design:	Totem	Database:	US_EDM

Survey									
Measured Depth (ft)	Inclination (°)	Azimuth (°)	Vertical Depth (ft)	+N/-S (ft)	+E/-W (ft)	Vertical Section (ft)	Dogleg Rate (°/100usft)	Build Rate (°/100usft)	Turn Rate (°/100usft)
953.0	1.10	79.25	952.9	-1.6	7.3	-5.1	0.67	-0.42	-23.16
1,048.0	1.00	97.25	1,047.9	-1.6	9.1	-5.9	0.36	-0.11	18.95
1,143.0	0.80	92.25	1,142.9	-1.7	10.5	-6.8	0.23	-0.21	-5.26
1,238.0	0.90	87.25	1,237.9	-1.7	11.9	-7.5	0.13	0.11	-5.26
1,333.0	1.20	100.25	1,332.9	-1.8	13.7	-8.5	0.40	0.32	13.68
1,428.0	1.30	103.25	1,427.8	-2.2	15.7	-9.8	0.13	0.11	3.16
1,523.0	1.50	105.25	1,522.8	-2.8	17.9	-11.5	0.22	0.21	2.11
1,619.0	1.30	100.25	1,618.8	-3.3	20.2	-13.1	0.24	-0.21	-5.21
1,715.0	1.40	100.25	1,714.8	-3.7	22.5	-14.5	0.10	0.10	0.00
1,809.0	1.30	90.25	1,808.7	-4.0	24.7	-15.8	0.27	-0.11	-10.64
1,903.0	1.20	96.25	1,902.7	-4.1	26.7	-17.0	0.18	-0.11	6.38
1,982.0	1.10	103.25	1,981.7	-4.3	28.3	-18.0	0.22	-0.13	8.86
2,047.0	0.57	124.10	2,046.7	-4.7	29.1	-18.7	0.93	-0.82	32.08
2,110.0	0.40	232.03	2,109.7	-5.0	29.2	-19.0	1.26	-0.27	171.32
2,205.0	1.80	180.97	2,204.7	-6.7	28.9	-20.3	1.66	1.47	-53.75
2,300.0	3.03	174.20	2,299.6	-10.7	29.2	-23.9	1.33	1.29	-7.13
2,395.0	2.95	163.48	2,394.5	-15.5	30.1	-28.5	0.59	-0.08	-11.28
2,490.0	3.43	161.90	2,489.3	-20.5	31.7	-33.7	0.51	0.51	-1.66
2,585.0	3.87	157.59	2,584.1	-26.2	33.8	-39.7	0.55	0.46	-4.54
2,681.0	2.51	151.52	2,680.0	-31.0	36.0	-45.0	1.46	-1.42	-6.32
2,775.0	2.73	150.03	2,773.9	-34.8	38.1	-49.3	0.24	0.23	-1.59
2,870.0	2.68	146.87	2,868.8	-38.6	40.5	-53.7	0.17	-0.05	-3.33
2,965.0	2.99	137.55	2,963.6	-42.3	43.4	-58.4	0.58	0.33	-9.81
3,060.0	1.63	122.08	3,058.6	-44.9	46.2	-62.0	1.56	-1.43	-16.28
3,154.0	1.58	115.93	3,152.5	-46.1	48.5	-64.3	0.19	-0.05	-6.54
3,249.0	1.49	115.66	3,247.5	-47.2	50.8	-66.4	0.10	-0.09	-0.28
3,344.0	1.32	126.21	3,342.5	-48.4	52.8	-68.4	0.33	-0.18	11.11
3,439.0	1.32	128.58	3,437.4	-49.7	54.5	-70.4	0.06	0.00	2.49
3,534.0	1.10	133.16	3,532.4	-51.1	56.0	-72.3	0.25	-0.23	4.82
3,629.0	2.15	163.65	3,627.4	-53.4	57.2	-74.9	1.40	1.11	32.09
3,724.0	2.29	164.44	3,722.3	-56.9	58.2	-78.5	0.15	0.15	0.83
3,819.0	1.98	164.88	3,817.2	-60.3	59.1	-81.9	0.33	-0.33	0.46
3,913.0	3.25	158.82	3,911.1	-64.4	60.5	-86.1	1.38	1.35	-6.45
4,008.0	3.34	164.18	4,006.0	-69.6	62.3	-91.4	0.34	0.09	5.64
4,103.0	3.34	167.52	4,100.8	-74.9	63.6	-96.8	0.20	0.00	3.52
4,198.0	3.52	164.71	4,195.7	-80.4	65.0	-102.2	0.26	0.19	-2.96
4,293.0	3.34	168.14	4,290.5	-86.0	66.3	-107.7	0.29	-0.19	3.61
4,388.0	3.12	166.73	4,385.3	-91.2	67.5	-112.8	0.25	-0.23	-1.48
4,484.0	3.34	173.32	4,481.2	-96.5	68.4	-117.8	0.45	0.23	6.86
4,579.0	3.47	170.60	4,576.0	-102.1	69.2	-123.0	0.22	0.14	-2.86
4,674.0	3.47	169.37	4,670.8	-107.8	70.2	-128.4	0.08	0.00	-1.29
4,769.0	3.25	170.16	4,765.7	-113.2	71.2	-133.7	0.24	-0.23	0.83
4,863.0	3.03	170.16	4,859.5	-118.3	72.1	-138.5	0.23	-0.23	0.00

Company:	Colorado Interstate Gas	Local Co-ordinate Reference:	Well Totem 29
Project:	SEC.17-T2S-R62W	TVD Reference:	RKB @ 5206.5ft (RKB -20°)
Site:	Totem SEC.17	MD Reference:	RKB @ 5206.5ft (RKB -20°)
Well:	Totem 29	North Reference:	True
Wellbore:	Totem	Survey Calculation Method:	Minimum Curvature
Design:	Totem	Database:	US_EDM

Survey										
Measured Depth (ft)	Inclination (°)	Azimuth (°)	Vertical Depth (ft)	+N/-S (ft)	+E/-W (ft)	Vertical Section (ft)	Dogleg Rate (°/100usft)	Build Rate (°/100usft)	Turn Rate (°/100usft)	
4,958.0	2.99	171.56	4,954.4	-123.2	72.9	-143.2	0.09	-0.04	1.47	
5,054.0	3.12	171.74	5,050.3	-128.3	73.6	-147.9	0.14	0.14	0.19	
5,149.0	2.42	153.72	5,145.2	-132.7	74.9	-152.3	1.17	-0.74	-18.97	
5,244.0	2.68	149.50	5,240.1	-136.4	76.9	-156.5	0.34	0.27	-4.44	
5,339.0	2.46	148.01	5,335.0	-140.0	79.1	-160.8	0.24	-0.23	-1.57	
5,434.0	2.33	143.97	5,429.9	-143.3	81.3	-164.7	0.22	-0.14	-4.25	
5,529.0	2.07	140.01	5,524.8	-146.2	83.5	-168.4	0.32	-0.27	-4.17	
5,623.0	2.15	130.78	5,618.7	-148.6	86.0	-171.7	0.37	0.09	-9.82	
5,719.0	2.15	128.85	5,714.7	-150.9	88.7	-175.1	0.08	0.00	-2.01	
5,814.0	2.07	126.39	5,809.6	-153.1	91.5	-178.3	0.13	-0.08	-2.59	
5,909.0	1.89	114.79	5,904.6	-154.7	94.3	-181.2	0.46	-0.19	-12.21	
6,004.0	1.58	106.08	5,999.5	-155.8	97.0	-183.4	0.43	-0.33	-9.17	
6,099.0	1.67	101.08	6,094.5	-156.4	99.6	-185.3	0.18	0.09	-5.26	
6,194.0	1.32	95.01	6,189.4	-156.8	102.0	-186.8	0.40	-0.37	-6.39	
6,289.0	0.88	81.12	6,284.4	-156.7	103.9	-187.7	0.54	-0.46	-14.62	
6,336.0	0.92	74.62	6,331.4	-156.6	104.6	-187.9	0.23	0.09	-13.83	
6,384.0	1.41	353.67	6,379.4	-155.9	104.9	-187.5	3.25	1.02	-168.65	
6,431.0	5.10	333.28	6,426.3	-153.4	103.9	-184.9	8.11	7.85	-43.38	
6,479.0	8.04	327.22	6,474.0	-148.7	101.1	-179.4	6.28	6.13	-12.63	
6,526.0	10.42	323.44	6,520.4	-142.5	96.8	-171.9	5.22	5.06	-8.04	
6,575.0	12.53	324.05	6,568.4	-134.7	91.0	-162.2	4.31	4.31	1.24	
6,622.0	14.20	325.20	6,614.1	-125.8	84.7	-151.4	3.60	3.55	2.45	
6,670.0	17.14	326.25	6,660.4	-115.1	77.5	-138.4	6.15	6.13	2.19	
6,717.0	19.43	326.69	6,705.0	-102.8	69.3	-123.7	4.88	4.87	0.94	
6,765.0	22.99	326.08	6,749.7	-88.3	59.7	-106.4	7.43	7.42	-1.27	
6,812.0	26.59	326.16	6,792.4	-72.0	48.7	-86.7	7.66	7.66	0.17	
6,860.0	29.71	326.95	6,834.7	-53.1	36.2	-64.1	6.55	6.50	1.65	
6,907.0	33.19	328.18	6,874.8	-32.4	23.1	-39.6	7.53	7.40	2.62	
6,955.0	36.18	327.66	6,914.3	-9.3	8.6	-12.3	6.26	6.23	-1.08	
7,002.0	37.76	327.92	6,951.8	14.7	-6.5	15.9	3.38	3.36	0.55	
7,050.0	41.93	328.80	6,988.7	40.8	-22.6	46.7	8.77	8.69	1.83	
7,097.0	46.64	329.94	7,022.3	69.1	-39.3	79.5	10.16	10.02	2.43	
7,145.0	49.85	330.38	7,054.2	100.1	-57.1	115.3	6.72	6.69	0.92	
7,191.0	53.36	328.89	7,082.8	131.2	-75.3	151.3	8.04	7.63	-3.24	
7,240.0	57.32	328.10	7,110.7	165.6	-96.4	191.6	8.19	8.08	-1.61	
7,287.0	60.40	328.10	7,135.0	199.7	-117.7	231.8	6.55	6.55	0.00	
7,335.0	62.55	328.18	7,157.9	235.5	-139.9	274.0	4.48	4.48	0.17	
7,382.0	64.97	328.10	7,178.7	271.4	-162.2	316.1	5.15	5.15	-0.17	
7,430.0	67.16	328.27	7,198.2	308.6	-185.3	360.0	4.57	4.56	0.35	
7,477.0	69.01	327.75	7,215.7	345.6	-208.4	403.5	4.07	3.94	-1.11	
7,525.0	71.74	327.22	7,231.8	383.7	-232.7	448.7	5.78	5.69	-1.10	
7,572.0	74.02	328.10	7,245.6	421.7	-256.7	493.6	5.17	4.85	1.87	
7,620.0	76.04	328.54	7,258.0	461.1	-281.1	539.9	4.30	4.21	0.92	

Company:	Colorado Interstate Gas	Local Co-ordinate Reference:	Well Totem 29
Project:	SEC.17-T2S-R62W	TVD Reference:	RKB @ 5206.5ft (RKB -20')
Site:	Totem SEC.17	MD Reference:	RKB @ 5206.5ft (RKB -20')
Well:	Totem 29	North Reference:	True
Wellbore:	Totem	Survey Calculation Method:	Minimum Curvature
Design:	Totem	Database:	US_EDM

Survey									
Measured Depth (ft)	Inclination (°)	Azimuth (°)	Vertical Depth (ft)	+N/-S (ft)	+E/-W (ft)	Vertical Section (ft)	Dogleg Rate (°/100usft)	Build Rate (°/100usft)	Turn Rate (°/100usft)
7,667.0	78.02	328.62	7,268.6	500.2	-304.9	585.7	4.22	4.21	0.17
7,715.0	79.91	328.71	7,277.8	540.5	-329.4	632.8	3.94	3.94	0.19
7,719.6	80.29	328.74	7,278.6	544.4	-331.8	637.4	8.16	8.14	0.67
29 LPL - 2239' FWL & 658' FNL									
7,776.0	84.87	329.12	7,285.9	592.2	-360.7	693.3	8.16	8.14	0.66
7" Casing Pt 7776'MD 7285.9'TVD 611'FNL & 2208'FWL - 7"									
7,795.0	86.42	329.24	7,287.3	608.5	-370.4	712.2	8.16	8.14	0.66
7,880.0	88.75	329.33	7,290.9	681.5	-413.7	797.1	2.74	2.74	0.11
7,974.0	90.24	328.80	7,291.7	762.1	-462.1	891.1	1.68	1.59	-0.56
8,069.0	89.98	330.12	7,291.5	843.9	-510.3	986.1	1.42	-0.27	1.39
8,164.0	89.76	329.15	7,291.7	925.9	-558.4	1,081.1	1.05	-0.23	-1.02
8,259.0	89.58	329.41	7,292.3	1,007.6	-606.9	1,176.1	0.33	-0.19	0.27
8,353.0	89.76	331.00	7,292.8	1,089.1	-653.6	1,270.1	1.70	0.19	1.69
8,448.0	89.67	331.00	7,293.3	1,172.2	-699.6	1,365.1	0.09	-0.09	0.00
8,543.0	89.41	332.23	7,294.1	1,255.8	-744.8	1,460.0	1.32	-0.27	1.29
8,612.2	89.34	332.23	7,294.8	1,317.0	-777.0	1,529.1	0.09	-0.09	0.00
29 BHL - 1765' FWL & 110' FSL									
8,638.0	89.32	332.23	7,295.1	1,339.9	-789.1	1,554.9	0.09	-0.09	0.00
8,733.0	89.49	332.67	7,296.1	1,424.1	-833.0	1,649.8	0.50	0.18	0.46
8,759.0	89.67	332.75	7,296.3	1,447.2	-844.9	1,675.8	0.76	0.69	0.31
8,790.0	89.67	332.75	7,296.5	1,474.7	-859.1	1,706.7	0.00	0.00	0.00
Projection to TD 8790'MD 7296.5'TVD - BHL 276'FSL & 1698'FWL SEC.8									

Design Targets									
Target Name	Dip Angle (°)	Dip Dir. (°)	TVD (ft)	+N/-S (ft)	+E/-W (ft)	Northing (usft)	Easting (usft)	Latitude	Longitude
29 SHL - 2575' FWL & 1	0.00	0.00	0.0	0.0	0.0	1,201,269.68	3,323,277.59	39.880098	-104.348063
- hit/miss target									
- Shape									
- survey hits target center									
- Point									

Casing Points				
Measured Depth (ft)	Vertical Depth (ft)	Name	Casing Diameter (")	Hole Diameter (")
7,776.0	7,285.9	7"	0	8-3/4

Survey Annotations				
Measured Depth (ft)	Vertical Depth (ft)	+N/-S (ft)	+E/-W (ft)	Comment
7,776.0	7,285.9	592.2	-360.7	7" Casing Pt 7776'MD 7285.9'TVD 611'FNL & 2208'FWL
8,790.0	7,296.5	1,474.7	-859.1	Projection to TD 8790'MD 7296.5'TVD
8,790.0	7,296.5	1,474.7	-859.1	BHL 276'FSL & 1698'FWL SEC.8

Company:	Colorado Interstate Gas	Local Co-ordinate Reference:	Well Totem 29
Project:	SEC.17-T2S-R62W	TVD Reference:	RKB @ 5206.5ft (RKB -20')
Site:	Totem SEC.17	MD Reference:	RKB @ 5206.5ft (RKB -20')
Well:	Totem 29	North Reference:	True
Wellbore:	Totem	Survey Calculation Method:	Minimum Curvature
Design:	Totem	Database:	US_EDM

Checked By: _____ Approved By: _____ Date: _____