

# Chevron Rockies Business Unit

## Field Qualitative Criteria for ECMC Reporting Associated with the Discovery of Potentially Impacted Material

If answered **Yes** to any of the questions listed below, this may suggest the presence of potentially impacted materials as outlined in ECMC Rule 912. Out of an abundance of caution, a “Yes” response will be reported to the ECMC within 24 hours after discovery, regardless of laboratory results. **Immediately notify the RBU Remediation Team.** Include a copy of this Field Qualitative Spill Criteria Checklist in the field Report.

Please answer the following questions when on-site:

1. Is there visible petroleum hydrocarbon staining in the soil?  
No
2. Does the soil sample from the stained area have a petroleum odor?  
No
3. Is there a petroleum hydrocarbon sheen on the nearby surface water?  
No
4. Does there appear to be a sheen of the surface of accumulated groundwater or seeps within the excavation indicative of petroleum?  
No
5. Is stained soil in contact with groundwater?  
No

Please Include relevant photos of the site conditions for items 1-5.

Location name: Burough C23-30D and Burough C14-13D (API #05-123-34352; API #05-123-34350)

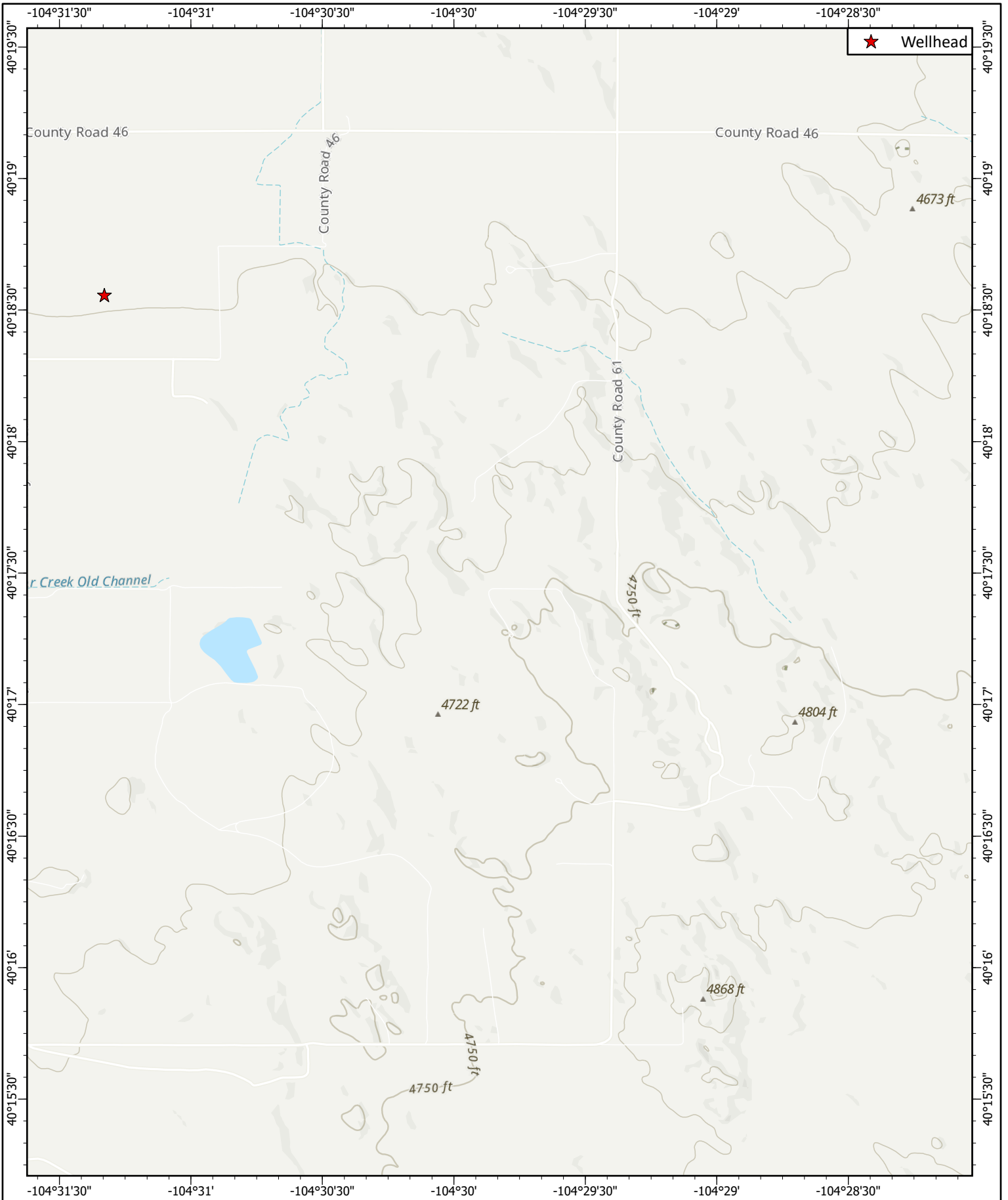
Please Circle Facility Type: Wellhead / Flowline

## Form 19 Information Summary

Site Name	Borough C 23-30D and Borough C14-13D
API #	05-123-34352 and 05-123-34350
REM #	21022 and 31512
Facility ID	N/A
Coordinates	40.3122605, -104.5225824 (FL01@3', Borough C 23-30D) 40.3122605, -104.5225824 (FL01@3', Borough C14-13D)
S/T/R	NESW 14/4N/64W
Cause of Release	Presumed production activities
Date of Discovery	12/29/2025
Spill Type	Historical
Land Use	Cropland
Weather Conditions	30's and fair
Surface Water	Riverine 0.29mi W
Number of Water Wells within ½ Mile Radius	12
Distance to Closest Water Well	0.18 mi SE
Approximate Depth to Groundwater	>20ft below ground surface
Distance to Nearest Wetland	Freshwater Emergent Wetland 0.74mi SE
Sensitive Area / Habitat	Farm Structures 0.40/0.44mi S
100 Year Floodplain	Yes, Zone A special flood hazard area without base flood elevation
Release in Municipality	No
Fluid Released	Presumed production fluids
Volume of Release	Unknown
Livestock Present	No
Closest Building	Farm Structure 0.40mi S
Soil Type(s)	SW
Disposal Facility	N/A
Excavation Dimensions	N/A
<p><b>Notes:</b>  <i>On December 15, 2025, Montrose personnel mobilized to the Borough C 23-30D location (40.309280, -104.522148) and the Borough C14-13D location (40.309280, -104.522230) to collect soil samples and perform soil screening as part of flowline decommissioning activities. Soil sampling and screening locations were based on ECMC regulations. No soil staining or petroleum odors were observed during the decommissioning activities. Soil samples collected during decommissioning activities were submitted for the full ECMC Table 915-1 suite of analyses.</i></p>	



Laboratory results received on December 29, 2025, indicate that the total concentrations of Total Petroleum Hydrocarbons (TPH) in soil sample FL01@3' collected under Burough C 23-30D (REM #21022, 40.312261, -104.522582) and in soil sample FL01@3' collected under Burough C14-13D (REM #31512, 40.312261, -104.522582) exceed the ECMC Table 915-1 cleanup concentration limit of 500 milligrams per kilogram (mg/kg) for TPH. The two FL01@3' sample locations were collocated in a common flowline trench for the Burough C 23-30D and Burough C14-13D flowlines. TPH was detected in FL01@3' sample collected for Burough C 23-30D at a total concentration of 641 mg/kg (118 mg/kg for TPH-DRO and 523 mg/kg for TPH-ORO). TPH was detected in FL01@3' sample collected for Burough C14-13D at a total concentration of 558 mg/kg (110 mg/kg for TPH-DRO and 448 mg/kg for TPH-ORO).



**MONTROSE**  
ENVIRONMENTAL

Montrose Environmental Group  
Date: 12/29/2025

Reviewed By: R. Bumgardner  
Author: D. Virilar-Knight

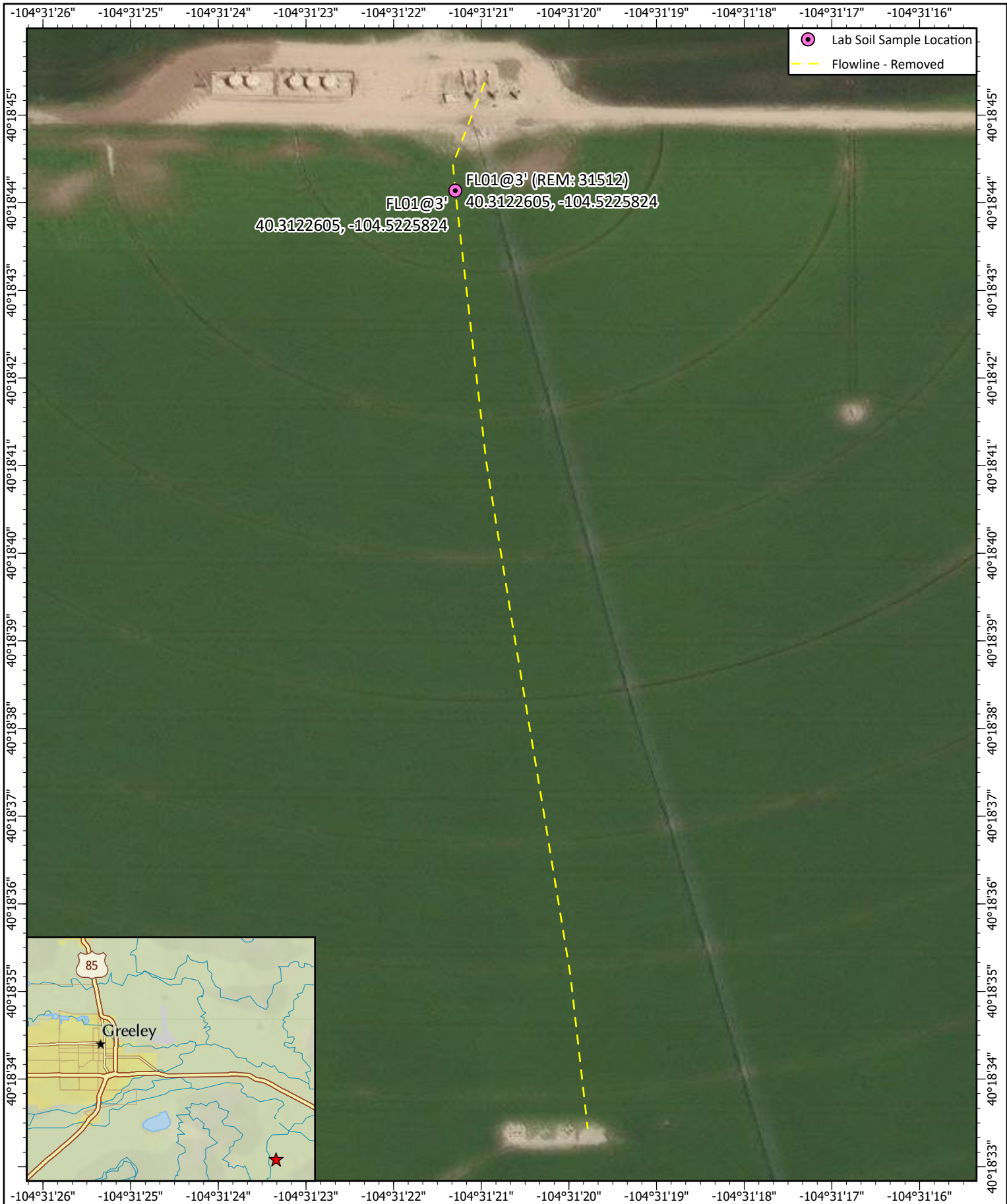
**Topographic Map of  
Borough C23-30D**

Noble-100322      Facility Number: 425354  
 NESW S14/T4N/R64W      REM Number: 21022  
 Weld County, Colorado      API Number: 05-123-34352

Figure 1

0 750 1,500 3,000 4,500  
 Feet

Coord. Sys.: GCS North American 1983



**MONTROSE**  
 ENVIRONMENTAL

Montrose Environmental Group  
 Date: 12/29/2025

Reviewed By: R. Bumgardner  
 Author: D. Virilar-Knight

**Potential Release Location**  
**(12/15/2025)**  
 Borough C23-30D

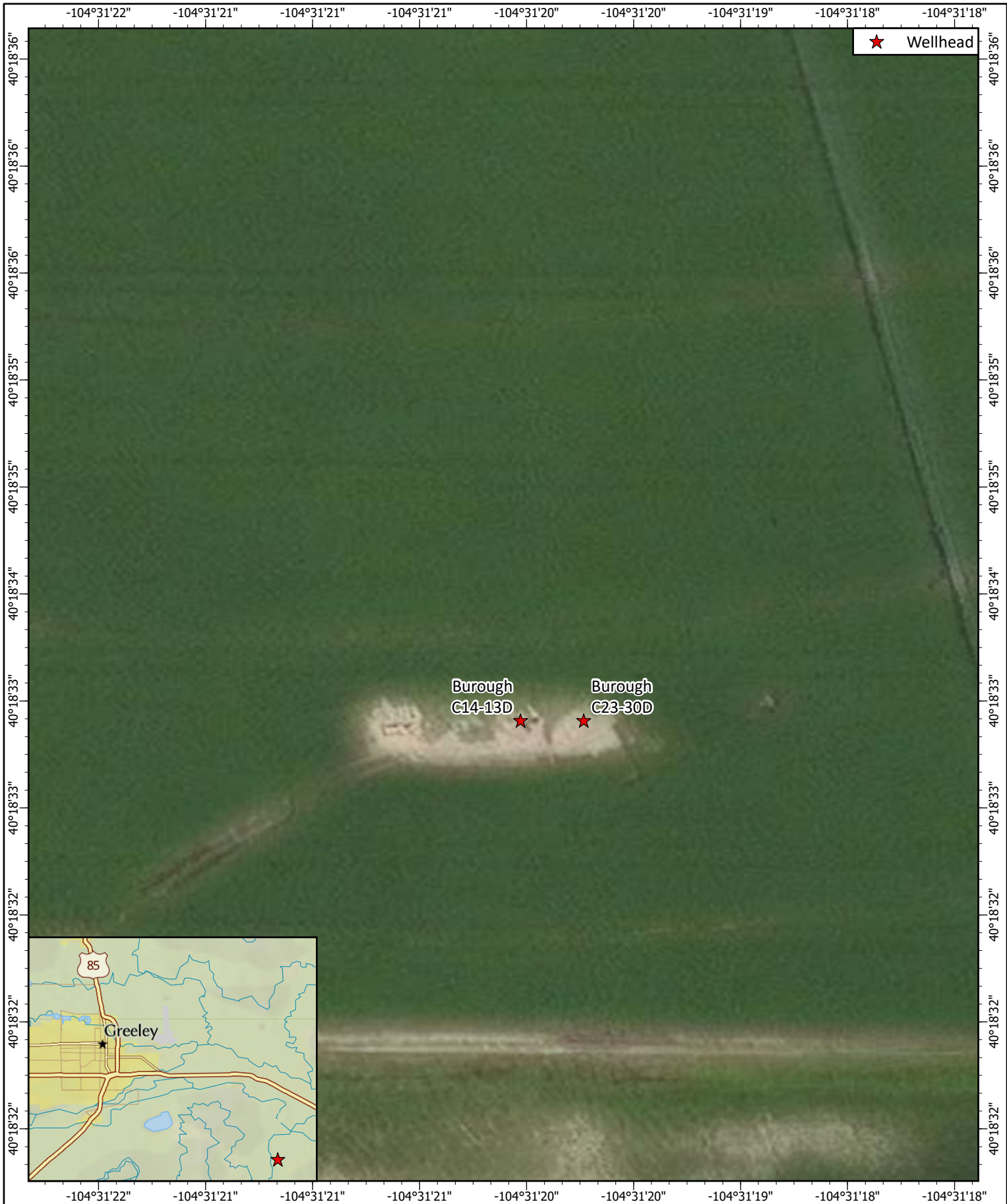
Noble-100322 Facility Number: 425354  
 NESW S14/T4N/R64W REM Number: 21022  
 Weld County, Colorado API Number: 05-123-34352

Figure 2

0 37.5 75 150 225  
Feet

N  
 W E  
 S

Coord. Sys.: GCS North American 1983



**MONTROSE ENVIRONMENTAL**

Montrose Environmental Group  
Date: 12/29/2025

Reviewed By: R. Bumgardner  
Author: D. Virilar-Knight

**Site Proximity Map**  
Borough C23-30D (REM #21022) and  
Borough C14-13D (REM #31512)

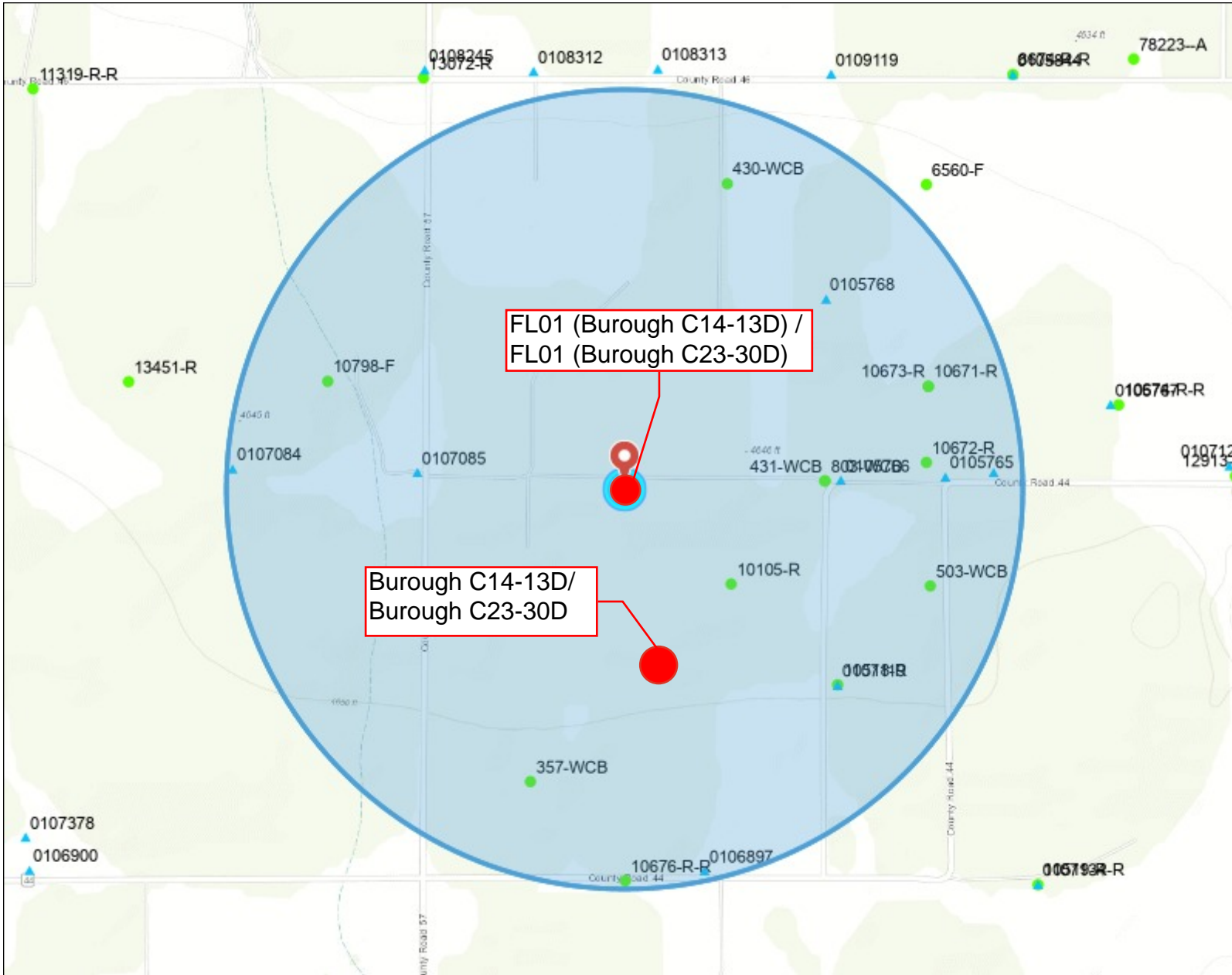
Weld County, Colorado

Noble-100322

Figure 3

0 25 50 100  
Feet

Coord. Sys.: GCS North American 1983



### Legend

- Surface Water
- ▲ All Points of Interest
- Well Constructed
- Final Permit
- All Stations
- Livestock Water Tank/Erosion
- Erosion Control Dam
- Livestock Water Tank
- County

### Location

The inset map shows the state of Colorado with a red dot indicating the location of the study area in the northwestern corner, near the borders with Utah and Arkansas. Major cities like Denver and Colorado Springs are also visible.

### Notes

REM 31512/ REM 21022



1: 12,000



*This product is for informational purposes and may not have been prepared for, or be suitable for legal, engineering, or surveying purposes. Users of this information should review and consult the primary data and information sources to ascertain the usability of the information.*

Date Prepared: 12/30/2025 7:33:04 AM

# National Flood Hazard Layer FIRMMette



104°31'40"W 40°18'58"N



## Legend

SEE FIS REPORT FOR DETAILED LEGEND AND INDEX MAP FOR FIRM PANEL LAYOUT

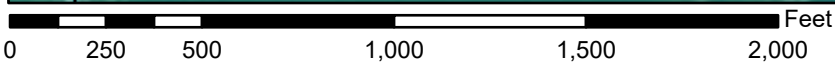
<b>SPECIAL FLOOD HAZARD AREAS</b>		Without Base Flood Elevation (BFE) <i>Zone A, V, A99</i>
		With BFE or Depth <i>Zone AE, AO, AH, VE, AR</i>
		Regulatory Floodway
<b>OTHER AREAS OF FLOOD HAZARD</b>		0.2% Annual Chance Flood Hazard, Areas of 1% annual chance flood with average depth less than one foot or with drainage areas of less than one square mile <i>Zone X</i>
		Future Conditions 1% Annual Chance Flood Hazard <i>Zone X</i>
		Area with Reduced Flood Risk due to Levee. See Notes. <i>Zone X</i>
		Area with Flood Risk due to Levee <i>Zone D</i>
<b>OTHER AREAS</b>		NO SCREEN Area of Minimal Flood Hazard <i>Zone X</i>
		Effective LOMRs
<b>GENERAL STRUCTURES</b>		Area of Undetermined Flood Hazard <i>Zone D</i>
		Channel, Culvert, or Storm Sewer
		Levee, Dike, or Floodwall
<b>OTHER FEATURES</b>		20.2 Cross Sections with 1% Annual Chance Water Surface Elevation
		17.5 Coastal Transect
		Base Flood Elevation Line (BFE)
		Limit of Study
		Jurisdiction Boundary
<b>MAP PANELS</b>		Coastal Transect Baseline
		Profile Baseline
		Hydrographic Feature
		Digital Data Available
		No Digital Data Available
		Unmapped

The pin displayed on the map is an approximate point selected by the user and does not represent an authoritative property location.

This map complies with FEMA's standards for the use of digital flood maps if it is not void as described below. The basemap shown complies with FEMA's basemap accuracy standards

The flood hazard information is derived directly from the authoritative NFHL web services provided by FEMA. This map was exported on **12/30/2025 at 2:41 PM** and does not reflect changes or amendments subsequent to this date and time. The NFHL and effective information may change or become superseded by new data over time.

This map image is void if the one or more of the following map elements do not appear: basemap imagery, flood zone labels, legend, scale bar, map creation date, community identifiers, FIRM panel number, and FIRM effective date. Map images for unmapped and unmodernized areas cannot be used for regulatory purposes.



1:6,000

104°31'3"W 40°18'30"N

Basemap Imagery Source: USGS National Map 2023



U.S. Fish and Wildlife Service, National Standards and Support Team, wetlands\_team@fws.gov

December 30, 2025

**Wetlands**

- |  |   |  |
|--|---|--|
|  Estuarine and Marine Deepwater |  Freshwater Emergent Wetland       |  Lake     |
|  Estuarine and Marine Wetland   |  Freshwater Forested/Shrub Wetland |  Other    |
|  |  Freshwater Pond                   |  Riverine |

This map is for general reference only. The US Fish and Wildlife Service is not responsible for the accuracy or currentness of the base data shown on this map. All wetlands related data should be used in accordance with the layer metadata found on the Wetlands Mapper web site.

<b>Client Name:</b> Chevron	<b>Project Name:</b> Borough C #23-30D	<b>Project Location:</b> 40.309287, -104.522158	<b>REM Number:</b> 21022
--------------------------------	---	--	-----------------------------

<b>Photo:</b> 1	<b>Date:</b> 12/15/2025	<b>Description:</b> Representative picture of general conditions at soil sampling location FL01 (40.312261, -104.522582) in well graded sand (SW) at a depth of approximately three (3) feet bgs (PID: 0.1 ppm). No soil staining or odors were present.
		

<b>Client Name:</b> Chevron	<b>Project Name:</b> Borough C14-13D	<b>Project Location:</b> 40.309280, -104.522230	<b>REM Number:</b> 31512
--------------------------------	---	--	-----------------------------

<b>Photo:</b> 1	<b>Date:</b> 12/15/2025	<b>Description:</b> Representative picture of general conditions at soil sampling location FL01 (40.312261, -104.522582) in well graded sand (SW) at a depth of approximately three (3) feet bgs. (PID: 1.8 ppm). No soil staining or odors were present
--------------------	----------------------------	--



**TABLE 1**  
**FIELD DATA SUMMARY TABLE**  
**OPERATOR (NOBLE 100322)**  
**BUROUGH C23-30D, WELD COUNTY, COLORADO**  
**REM # 21022**

Sample ID	Sample Date	Depth (ft)	GPS Data Latitude/Longitude		PDOP Value	VOC Concentration (ppm)
FL01@3'	12/15/2025	3.0	40.312261	-104.522582	1.0	0.1

1. Global Positioning System (GPS) data is provided in decimal degrees using North American Datum (NAD) 83 UTMZone 13 North.

2. Volatile organic compound (VOC) concentrations are measured in the field using a photoionization detector (PID).

PDOP = Position Dilution of Precision

ppm = Parts per million

in. = Inches

ft. = Feet

bgs = Below ground surface

TABLE 2  
SUMMARY OF VOLATILE ORGANIC SOIL CHEMISTRY DATA  
OPERATOR (NOBLE 100322)  
BUROUGH C23-30D, WELD COUNTY, COLORADO  
REM # 21022

Sample ID	Sample Date	Depth (ft)	Benzene (mg/kg)	Toluene (mg/kg)	Ethyl-Benzene (mg/kg)	Xylenes (mg/kg)	1,2,4-Trimethyl-Benzene (mg/kg)	1,3,5-Trimethyl-Benzene (mg/kg)	Naphthalene (mg/kg)	TPH (mg/kg)	TPH GRO (mg/kg)	TPH DRO (mg/kg)	TPH ORO (mg/kg)
ECMC Table 915-1 Limits (Residential SSL)			1.2	490	5.8	58	30	27	2	500	500**		
ECMC Table 915-1 Limits (Protection of Groundwater SSL)			0.0026	0.69	0.78	9.9	0.0081	0.0087	0.0038	500	500**		
FL01@3'	12/15/2025	3.0	<0.002	<0.002	<0.002	<0.002	<0.002	<0.002	<0.002	<b>641.0</b>	<0.228	<b>118.0</b>	<b>523</b>

1. Bold values exceed the ECMC Table 915-1 limit(s)
  2. Red & blue highlighted soil analytical values indicate an exceedance of the referenced soil screening level (SSL)
  3. \* Indicates laboratory minimum detection limit in excess of SSL
  4. \*\* Summation of GRO+DRO+ORO must be less than 500 mg/kg
- (-) = Analytical result is less than the indicated laboratory reporting limit.  
TPH-GRO = Total petroleum hydrocarbons - gasoline range organics  
TPH-DRO = Total petroleum hydrocarbons - diesel range organics  
TPH-ORO = Total petroleum hydrocarbons - oil range organics  
mg/kg = Milligrams per kilogram  
ft. = Feet  
bgs = Below ground surface  
NA - Not analyzed

TABLE 3  
SUMMARY OF POLYCYCLIC AROMATIC HYDROCARBON SOIL CHEMISTRY DATA  
OPERATOR (NOBLE 100322)  
BROUGH C23-30D, WELD COUNTY, COLORADO  
REM # 21022

Sample ID	Sample Date	Depth (ft)	Acenaphthene (mg/kg)	Anthracene (mg/kg)	Benzo (a) Anthracene (mg/kg)	Benzo (a) Pyrene (mg/kg)	Benzo (b) Fluoranthene (mg/kg)	Benzo (k) Fluoranthene (mg/kg)	Chrysene (mg/kg)	Dibenzo (a,h) Anthracene (mg/kg)	Fluoranthene (mg/kg)	Fluorene (mg/kg)	Indeno (1,2,3-cd) Pyrene (mg/kg)	Pyrene (mg/kg)	1-Methyl - Naphthalene (mg/kg)	2-Methyl- Naphthalene (mg/kg)
ECMC Table 915-1 Limits (Residential SSL)			360	1800	1.1	0.11	1.1	11	110	0.11	240	240	1.1	180	18	24
ECMC Table 915-1 Limits (Protection of Groundwater SSL)			0.55	5.8	0.011	0.24	0.3	2.9	9	0.096	8.9	0.54	0.98	1.3	0.006	0.019
FL01@3'	12/15/2025	3.0	<0.023	<0.023	<0.006	<0.023	<0.023	<0.023	<0.023	<0.023	<0.023	<0.023	<0.023	<0.023	<0.002	<0.002

1. Bold values exceed the ECMC Table 915-1 limit(s)
  2. Red & blue highlighted soil analytical values indicate an exceedance of the referenced soil screening level (SSL)
  3. \* Indicates laboratory minimum detection limit in excess of SSL
  4. \*\* Summation of GRO+DRO+ORO must be less than 500 mg/kg
- (<) = Analytical result is less than the indicated laboratory reporting limit.  
TPH-GRO = Total petroleum hydrocarbons - gasoline range organics  
TPH-DRO = Total petroleum hydrocarbons - diesel range organics  
TPH-ORO = Total petroleum hydrocarbons - oil range organics  
mg/kg = Milligrams per kilogram  
ft. = Feet  
bgs = Below ground surface  
NA - Not analyzed

**TABLE 4**  
**SUMMARY OF SOIL SUITABILITY FOR RECLAMATION**  
**OPERATOR (NOBLE 100322)**  
**BUROUGH C23-30D, WELD COUNTY, COLORADO**  
**REM # 21022**

Sample ID	Sample Date	Depth (ft)	pH (Standard Units)	EC (mmhos/cm)	SAR (Standard Units)	Boron (mg/L)
ECMC Table 915-1 Soil Suitability Limits			6 - 8.3	<4	<6	2
FL01@3'	12/15/2025	3.0	8.15	3.27	5.87	<b>2.07</b>
Maximum Background Concentration			NA	NA	NA	NA

1. **Bold** faced values exceed the ECMC Table 915-1 limit(s), but are within background concentrations.
2. **Bold** faced values exceed the ECMC Table 915-1 limit(s) and native background concentrations.
3. Brown highlighted soil analytical values indicate a regulatory exceedance.

NA - Not analyzed

TABLE 5  
SUMMARY OF METALS IN SOIL CHEMISTRY DATA  
OPERATOR (NOBLE 100322)  
BROUGH C23-30D, WELD COUNTY, COLORADO  
REM # 21022

Sample ID	Sample Date	Depth (ft)	Arsenic (mg/kg)	Barium (mg/kg)	Cadmium (mg/kg)	Chromium (VI) (mg/kg)	Copper (mg/kg)	Lead (mg/kg)	Nickel (mg/kg)	Selenium (mg/kg)	Silver (mg/kg)	Zinc (mg/kg)
ECMC Table 915-1 Limits (Residential SSL)			0.68	15000	71	0.3	3100	400	1500	390	390	23000
ECMC Table 915-1 Limits (Protection of Groundwater SSL)			0.29	82	0.38	0.00067	46	14	26	0.26	0.8	370
FL01@3'	12/15/2025	3.0	<b>4.74</b>	<b>177</b>	<0.303	<0.34	<36.3	<b>14.6</b>	<20.7	0.224	<0.637	<295
1.25x Maximum Background Concentration			NA	NA	NA	NA	NA	NA	NA	NA	NA	NA

1. **Bold** faced values exceed the ECMC Table 915-1 limit(s), but are within 1.25x background concentrations.
2. **Bold** faced values exceed the ECMC Table 915-1 limit(s) and native background concentrations.
3. Red & blue highlighted soil analytical values indicate an exceedance of the referenced soil screening level (SSL).
4. Non-detect background results accounted for in the highest background concentration by using the reporting limit.

ECMC = Energy & Carbon Management Commission

(<) = Analytical result is less than the indicated laboratory reporting limit.

mg/kg = Milligrams per kilogram

ft. = Feet

bgs = Below ground surface

\* Indicates laboratory minimum detection limit in excess of SSL

NA - Not analyzed

**TABLE 1**  
**FIELD DATA SUMMARY TABLE**  
**OPERATOR (NOBLE 100322)**  
**BUROUGH C14-13D, WELD COUNTY, COLORADO**  
**REM # 31512**

Sample ID	Sample Date	Depth (ft)	GPS Data Latitude/Longitude		PDOP Value	VOC Concentration (ppm)
FL01@3'	12/15/2025	3.0	40.312261	-104.522582	1.0	1.8

1. Global Positioning System (GPS) data is provided in decimal degrees using North American Datum (NAD) 83 UTMZone 13 North.

2. Volatile organic compound (VOC) concentrations are measured in the field using a photoionization detector (PID).

PDOP = Position Dilution of Precision

ppm = Parts per million

in. = Inches

ft. = Feet

bgs = Below ground surface

TABLE 2  
SUMMARY OF VOLATILE ORGANIC SOIL CHEMISTRY DATA  
OPERATOR (NOBLE 100322)  
BUROUGH C14-13D, WELD COUNTY, COLORADO  
REM # 31512

Sample ID	Sample Date	Depth (ft)	Benzene (mg/kg)	Toluene (mg/kg)	Ethyl-Benzene (mg/kg)	Xylenes (mg/kg)	1,2,4-Trimethyl-Benzene (mg/kg)	1,3,5-Trimethyl-Benzene (mg/kg)	Naphthalene (mg/kg)	TPH (mg/kg)	TPH GRO (mg/kg)	TPH DRO (mg/kg)	TPH ORO (mg/kg)
ECMC Table 915-1 Limits (Residential SSL)			1.2	490	5.8	58	30	27	2	500	500**		
ECMC Table 915-1 Limits (Protection of Groundwater SSL)			0.0026	0.69	0.78	9.9	0.0081	0.0087	0.0038	500	500**		
FL01@3'	12/15/2025	3.0	<0.002	<0.002	<0.002	<0.002	<0.002	<0.002	<0.002	<b>558</b>	<0.231	<b>110.0</b>	<b>448</b>

1. Bold values exceed the ECMC Table 915-1 limit(s)
  2. Red & blue highlighted soil analytical values indicate an exceedance of the referenced soil screening level (SSL)
  3. \* Indicates laboratory minimum detection limit in excess of SSL
  4. \*\* Summation of GRO+DRO+ORO must be less than 500 mg/kg
- (<) = Analytical result is less than the indicated laboratory reporting limit.  
TPH-GRO = Total petroleum hydrocarbons - gasoline range organics  
TPH-DRO = Total petroleum hydrocarbons - diesel range organics  
TPH-ORO = Total petroleum hydrocarbons - oil range organics  
mg/kg = Milligrams per kilogram  
ft. = Feet  
bgs = Below ground surface  
NA - Not analyzed

TABLE 3  
SUMMARY OF POLYCYCLIC AROMATIC HYDROCARBON SOIL CHEMISTRY DATA  
OPERATOR (NOBLE 100322)  
BROUGH C14-13D, WELD COUNTY, COLORADO  
REM # 31512

Sample ID	Sample Date	Depth (ft)	Acenaphthene (mg/kg)	Anthracene (mg/kg)	Benzo (a) Anthracene (mg/kg)	Benzo (a) Pyrene (mg/kg)	Benzo (b) Fluoranthene (mg/kg)	Benzo (k) Fluoranthene (mg/kg)	Chrysene (mg/kg)	Dibenzo (a,h) Anthracene (mg/kg)	Fluoranthene (mg/kg)	Fluorene (mg/kg)	Indeno (1,2,3-cd) Pyrene (mg/kg)	Pyrene (mg/kg)	1-Methyl - Naphthalene (mg/kg)	2-Methyl- Naphthalene (mg/kg)
ECMC Table 915-1 Limits (Residential SSL)			360	1800	1.1	0.11	1.1	11	110	0.11	240	240	1.1	180	18	24
ECMC Table 915-1 Limits (Protection of Groundwater SSL)			0.55	5.8	0.011	0.24	0.3	2.9	9	0.096	8.9	0.54	0.98	1.3	0.006	0.019
FL01@3'	12/15/2025	3.0	<0.023	<0.023	<0.006	<0.023	<0.023	<0.023	<0.023	<0.023	<0.023	<0.023	<0.023	<0.023	<0.002	<0.002

1. Bold values exceed the ECMC Table 915-1 limit(s)
  2. Red & blue highlighted soil analytical values indicate an exceedance of the referenced soil screening level (SSL)
  3. \* Indicates laboratory minimum detection limit in excess of SSL
  4. \*\* Summation of GRO+DRO+ORO must be less than 500 mg/kg
- (<) = Analytical result is less than the indicated laboratory reporting limit.  
TPH-GRO = Total petroleum hydrocarbons - gasoline range organics  
TPH-DRO = Total petroleum hydrocarbons - diesel range organics  
TPH-ORO = Total petroleum hydrocarbons - oil range organics  
mg/kg = Milligrams per kilogram  
ft. = Feet  
bgs = Below ground surface  
NA - Not analyzed

**TABLE 4**  
**SUMMARY OF SOIL SUITABILITY FOR RECLAMATION**  
**OPERATOR (NOBLE 100322)**  
**BUROUGH C14-13D, WELD COUNTY, COLORADO**  
**REM # 31512**

Sample ID	Sample Date	Depth (ft)	pH (Standard Units)	EC (mmhos/cm)	SAR (Standard Units)	Boron (mg/L)
ECMC Table 915-1 Soil Suitability Limits			6 - 8.3	<4	<6	2
FL01@3'	12/15/2025	3.0	8.00	<b>4.530</b>	<b>6.30</b>	<b>2.080</b>
Maximum Background Concentration			NA	NA	NA	NA

1. **Bold** faced values exceed the ECMC Table 915-1 limit(s), but are within background concentrations.
2. **Bold** faced values exceed the ECMC Table 915-1 limit(s) and native background concentrations.
3. Brown highlighted soil analytical values indicate a regulatory exceedance.

NA - Not analyzed

**TABLE 5**  
**SUMMARY OF METALS IN SOIL CHEMISTRY DATA**  
**OPERATOR (NOBLE 100322)**  
**BUROUGH C14-13D, WELD COUNTY, COLORADO**  
**REM # 31512**

Sample ID	Sample Date	Depth (ft)	Arsenic (mg/kg)	Barium (mg/kg)	Cadmium (mg/kg)	Chromium (VI) (mg/kg)	Copper (mg/kg)	Lead (mg/kg)	Nickel (mg/kg)	Selenium (mg/kg)	Silver (mg/kg)	Zinc (mg/kg)
ECMC Table 915-1 Limits (Residential SSL)			0.68	15000	71	0.3	3100	400	1500	390	390	23000
ECMC Table 915-1 Limits (Protection of Groundwater SSL)			0.29	82	0.38	0.00067	46	14	26	0.26	0.8	370
FL01@3'	12/15/2025	3.0	<b>4.60</b>	<b>161.0</b>	<0.301	<0.34	<36.4	<b>14.3</b>	<20.6	0.233	<0.633	<293
1.25x Maximum Background Concentration			NA	NA	NA	NA	NA	NA	NA	NA	NA	NA

1. **Bold** faced values exceed the ECMC Table 915-1 limit(s), but are within 1.25x background concentrations.
2. **Bold** faced values exceed the ECMC Table 915-1 limit(s) and native background concentrations.
3. Red & blue highlighted soil analytical values indicate an exceedance of the referenced soil screening level (SSL).
4. Non-detect background results accounted for in the highest background concentration by using the reporting limit.

ECMC = Energy & Carbon Management Commission

(<) = Analytical result is less than the indicated laboratory reporting limit.

mg/kg = Milligrams per kilogram

ft. = Feet

bgs = Below ground surface

\* Indicates laboratory minimum detection limit in excess of SSL

NA - Not analyzed