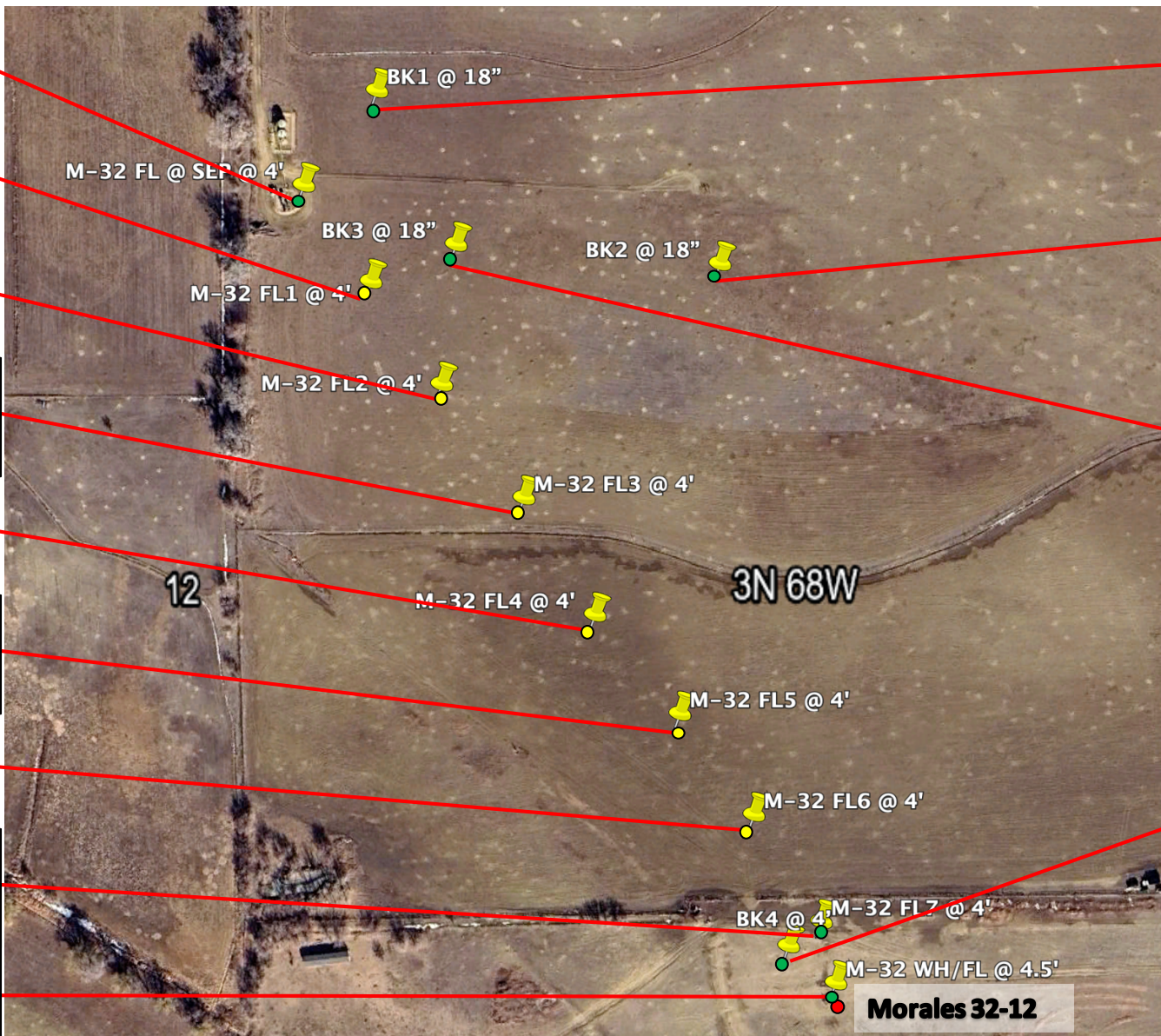


M-32 FL @ SEP @ 4'	PID: 0.4 40.243159, -104.948263
M-32 FL1 @ 4'	PID: 0.5 40.245909, -104.950627
M-32 FL2 @ 4'	PID: 0.0 40.245471, -104.950259
M-32 FL3 @ 4'	PID: 0.0 40.244985, -104.949829
M-32 FL4 @ 4'	PID: 0.0 40.244483, -104.949457
M-32 FL5 @ 4'	PID: 0.0 40.244057, -104.949010
M-32 FL6 @ 4'	PID: 0.0 40.243621, -104.948619
M-32 FL7 @ 4'	PID: 0.0 40.243159, -104.948263
M-32 FL @ SEP @ 4'	PID: 0.0 40.242893, -104.948186




BK1 @ 18" and 4'	PID: 0.0 40.246723, -104.950593
BK2 @ 18" and 4'	PID: 0.0 40.245986, -104.948796
BK3 @ 18" and 4'	PID: 0.0 40.246068, -104.950181
BK4 @ 18" and 4'	PID: 0.0 40.243055, -104.948436

● Wellhead	Sample Label
● Sample Point	
● Screening Point	

*Diagram is Approximate

Revision	Date


 P.O. Box 2169
 Loveland, CO 80539
 (970) 669-7411
www.petersonenergyoperating.com

BLUE CHIP OIL, INC. - #8840

Morales 32-12 Wellhead and Flowline Sample Map
Overview and Topographic Map for Location ID: 302902

SWNE Section 12, Township 3N, Range 68W
 Weld County, Colorado

DATE DRAWN: 12/19/2025

SCALE: _____
 DRAWN BY: RD