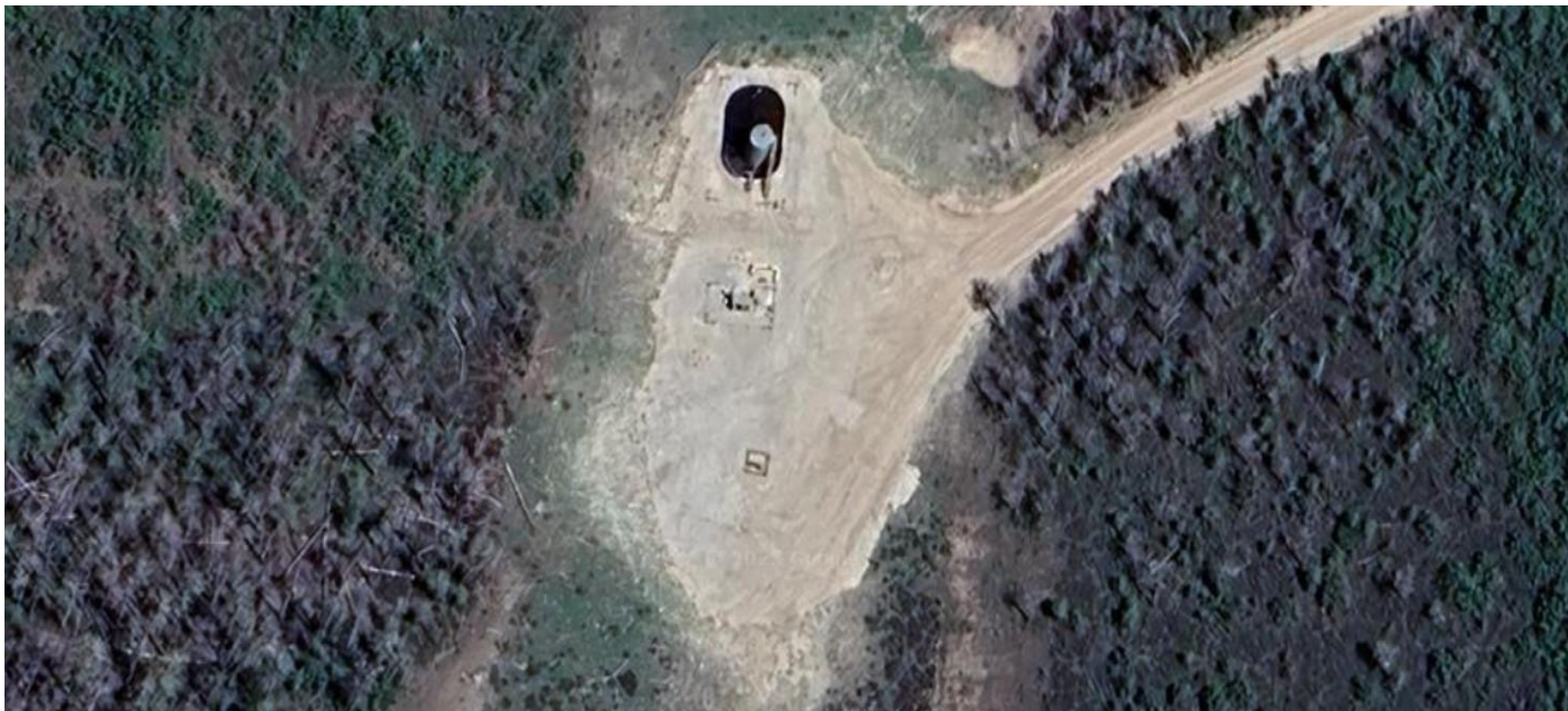


Storm Water Management and Erosion control
Location Name: QB ENERGY OPERATING LLC PUCKETT 11B-25 Pad
Location #: 383295



**Location Overview: Location is within High Priority/Black Bear
Habitat areas/Greater Sage Grouse General Habitat
Management Area & in close proximity to Density/NSO
habitat areas.**

Section/Township/Range: 25 6S97W

Storm water Management and Erosion control
Location Name: QB ENERGY OPERATING LLC PUCKETT 11B-25 Pad
Location #: 383295



North West corner of location.



North East corner of location.



South West corner of location.



South East corner of location.