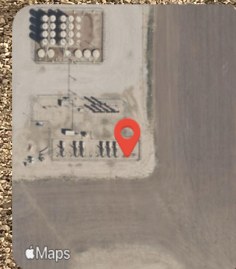


Looking at the spill location. An excavation is open at the spill location. Orange construction fencing surrounds the open excavation.



Fort Lupton, CO, United States

Lat 40.147819, Long - 104.898445

12/16/2025 14:59 GMT-07:00

ECMC - Environmental Inspection



62°F

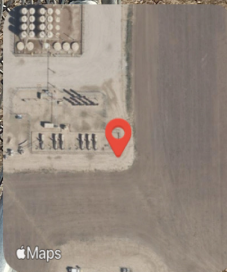
59° NE

11.5 mph

4988.32 ft

2.39 m

Pipe insulation is visible next to the spill location.



Fort Lupton, CO, United States

Lat 40.147771, Long -104.898347
12/16/2025 14:59 GMT-07:00
ECMC : Environmental Inspection



62°F

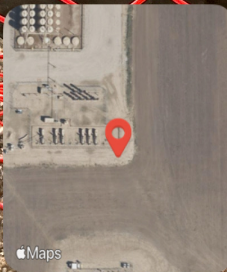
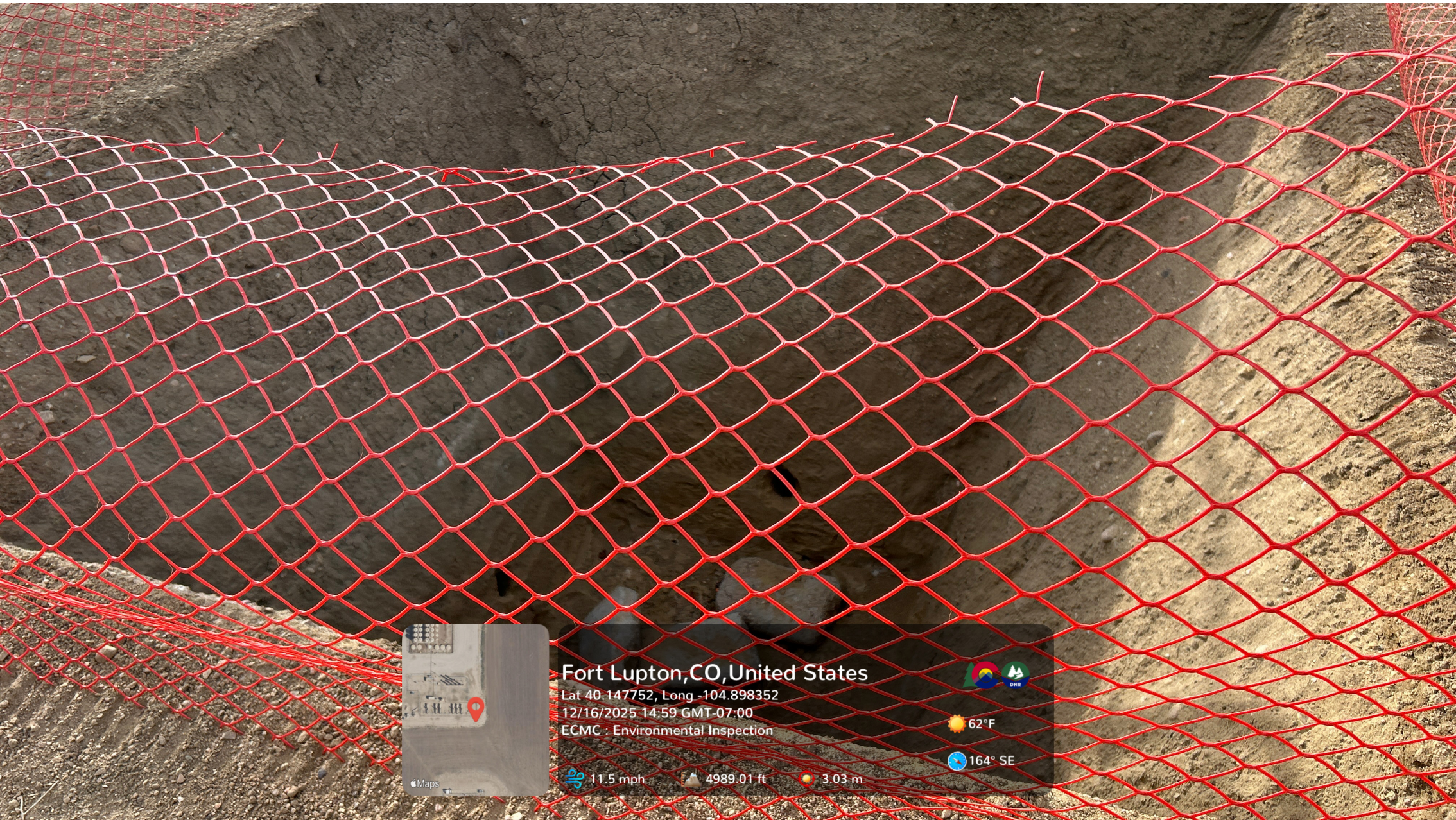
93° E

11.5 mph

4995.31 ft

2.32 m

Looking into the open excavation.



Fort Lupton, CO, United States

Lat 40.147752, Long -104.898352
12/16/2025 14:59 GMT-07:00
ECMC : Environmental Inspection



62°F

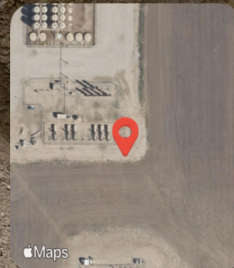
164° SE

11.5 mph

4989.01 ft

3.03 m

Looking into the open excavation.



Fort Lupton, CO, United States

Lat 40.147737, Long -104.898394

12/16/2025 15:00 GMT-07:00

ECMC : Environmental Inspection

11.5 mph

4987.99 ft

7.5 m

62°F

319° NW