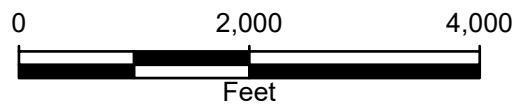


**Legend**

○ Site Location



**FIGURE 1**  
**SITE LOCATION MAP**  
**HSR-MILLER 1-29A-AL**  
**NENE SEC 29-T3N-R66W**  
**WELD, COLORADO**

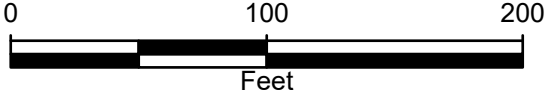




ESRI, HERE, Garmin

**Legend**

- Plugged and Abandoned Well
- Cardinal Direction Photo Locations
- Cardinal Direction Photos Taken 150' from Well



**FIGURE 2**  
**SITE MAP**  
**HSR-MILLER 1-29A-AL**  
**NENE SEC 29-T3N-R66W**  
**WELD, COLORADO**



### FIGURE 3: PHOTOGRAPHIC LOG



Photograph 1: View facing north as required in Energy and Carbon Management Commission (ECMC) Rule 1004.  
Photo Taken from GPS 40.199957, -104.793140



Photograph 2: View facing east as required in Energy and Carbon Management Commission (ECMC) Rule 1004.  
Photo Taken from GPS 40.200307, -104.793551

### FIGURE 3: PHOTOGRAPHIC LOG



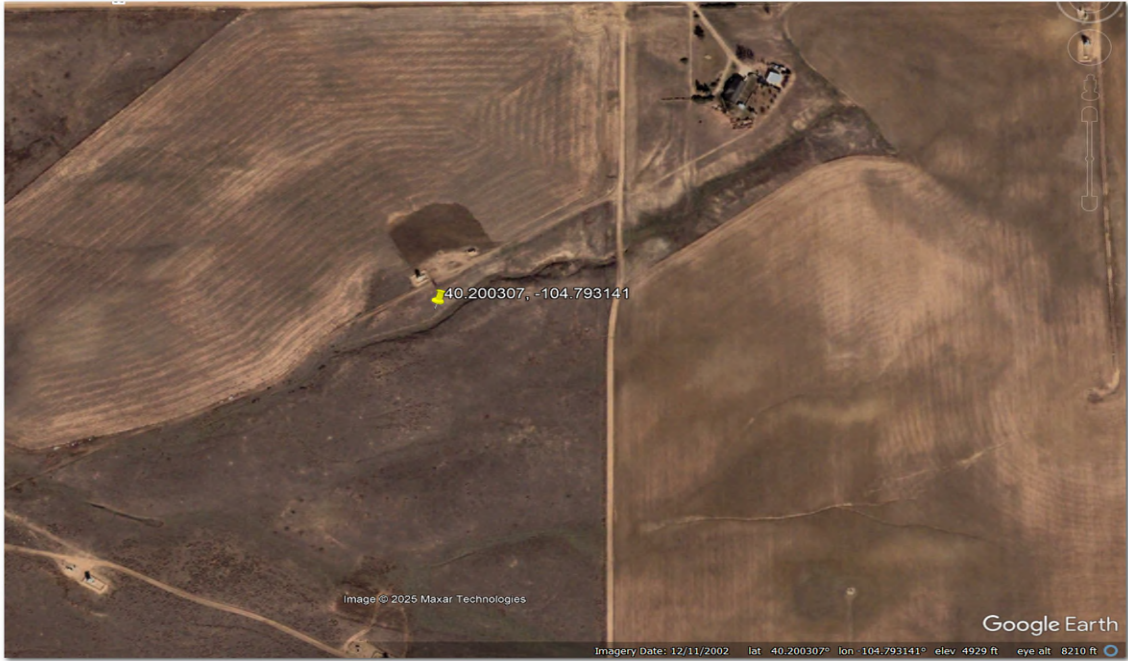
Photograph 3: View facing south as required in Energy and Carbon Management Commission (ECMC) Rule 1004.  
Photo Taken from GPS 40.200657, -104.793141



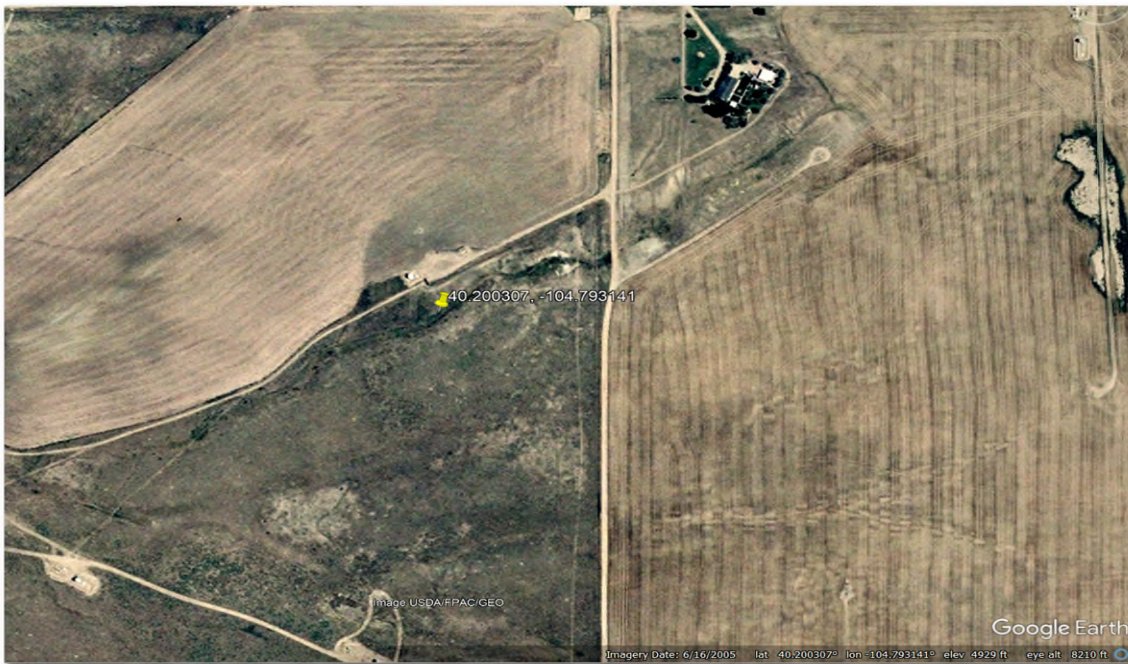
Photograph 4: View facing west as required in Energy and Carbon Management Commission (ECMC) Rule 1004.  
Photo Taken from GPS 40.200308, -104.792731



## Attachments: Historic Imagery



Imagery Date: December 11, 2002



Imagery Date: June 16, 2005

Site Name: HSR-Miller 1-29A AL  
Imagery Source: Google Earth



## Attachments: Historic Imagery



Imagery Date: February 4, 2025

Site Name: HSR-Miller 1-29A AL  
Imagery Source: Google Earth

Page 2 of 2

