

Legend

 Site Location

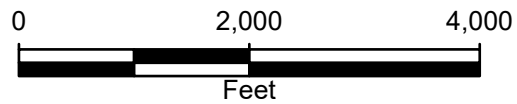
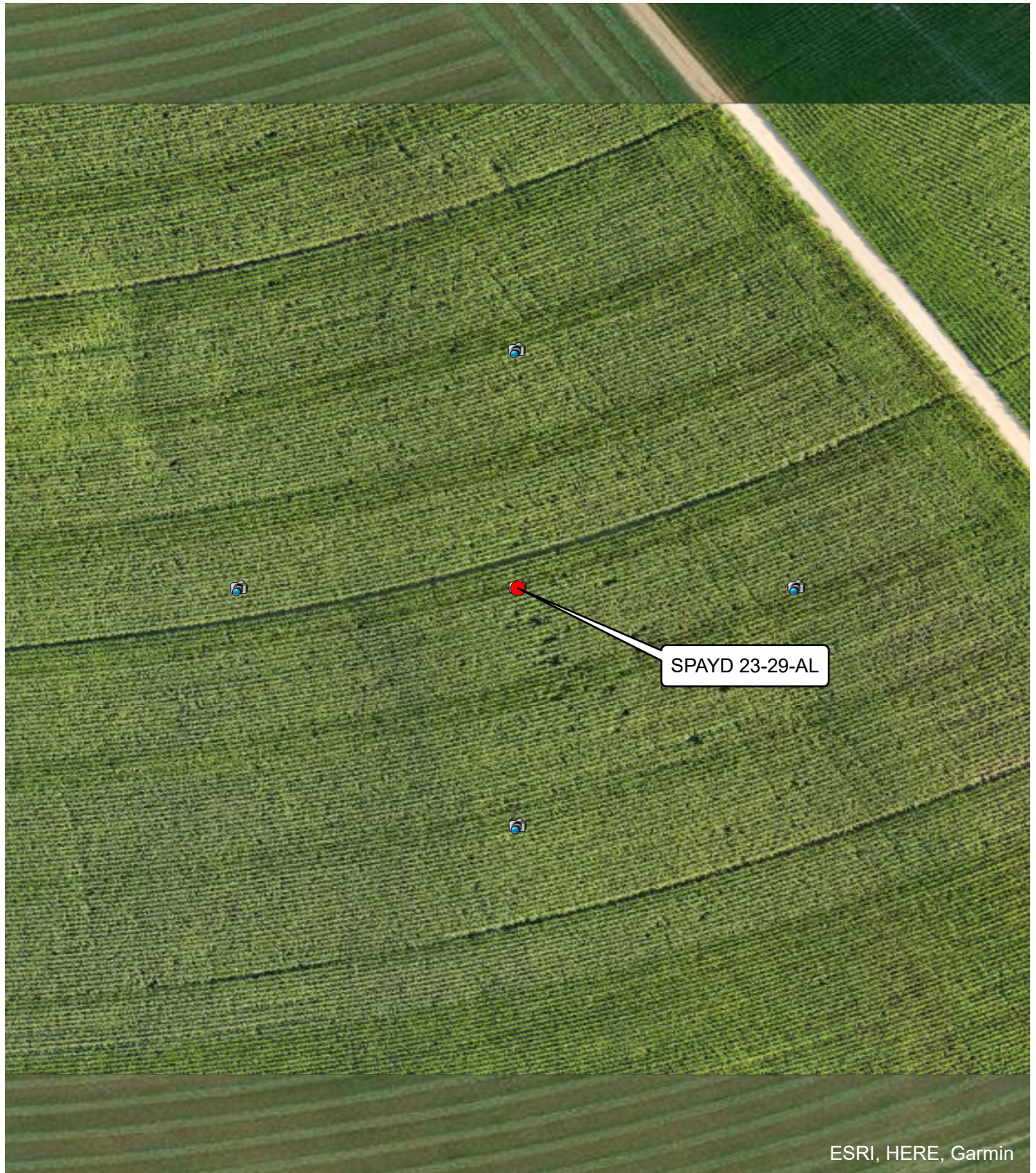


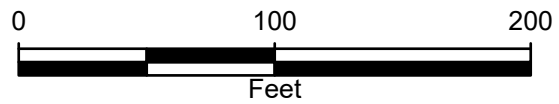
FIGURE 1
SITE LOCATION MAP
SPAYD 23-29-AL
SESW SEC 29-T4N-R65W
WELD, COLORADO





Legend

- Plugged and Abandoned Well
- 📷 Cardinal Direction Photo Locations
- Cardinal Direction Photos Taken 150' from Well



Aerial Imagery Collected September 04, 2025

FIGURE 2
SITE MAP
SPAYD 23-29-AL
SESW SEC 29-T4N-R65W
WELD, COLORADO



FIGURE 3: PHOTOGRAPHIC LOG



Photograph 1: View facing north as required in Energy and Carbon Management Commission (ECMC) Rule 1004.
Photo Taken from GPS 40.277710, -104.690060



Photograph 2: View facing east as required in Energy and Carbon Management Commission (ECMC) Rule 1004.
Photo Taken from GPS 40.278060, -104.690470



FIGURE 3: PHOTOGRAPHIC LOG



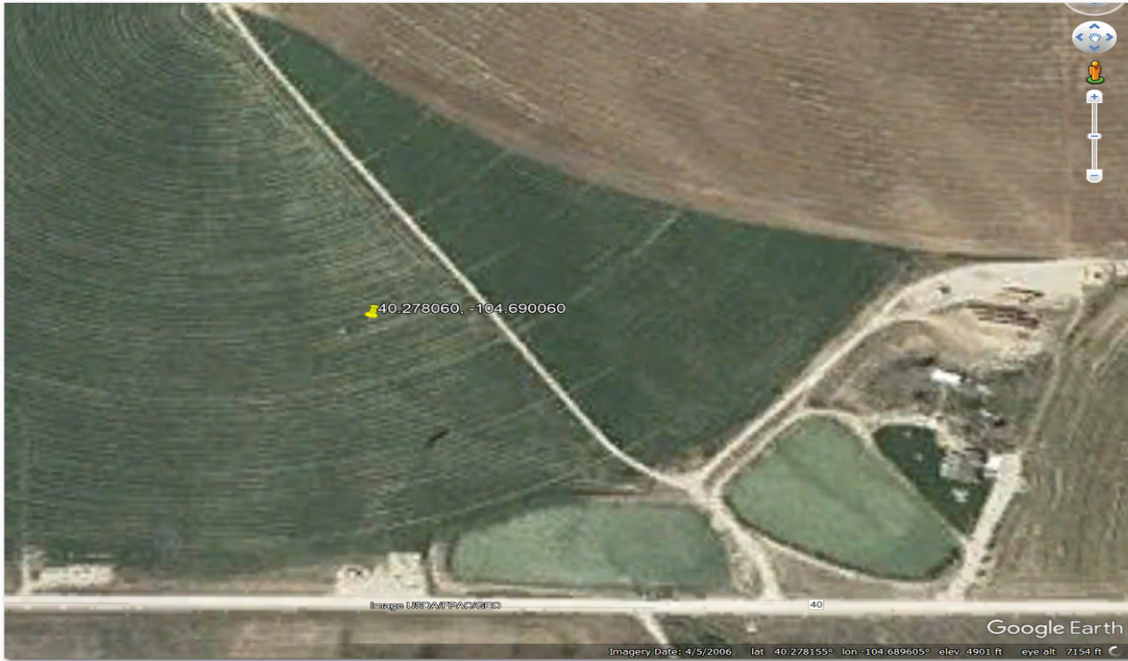
Photograph 3: View facing south as required in Energy and Carbon Management Commission (ECMC) Rule 1004.
Photo Taken from GPS 40.278410, -104.690061



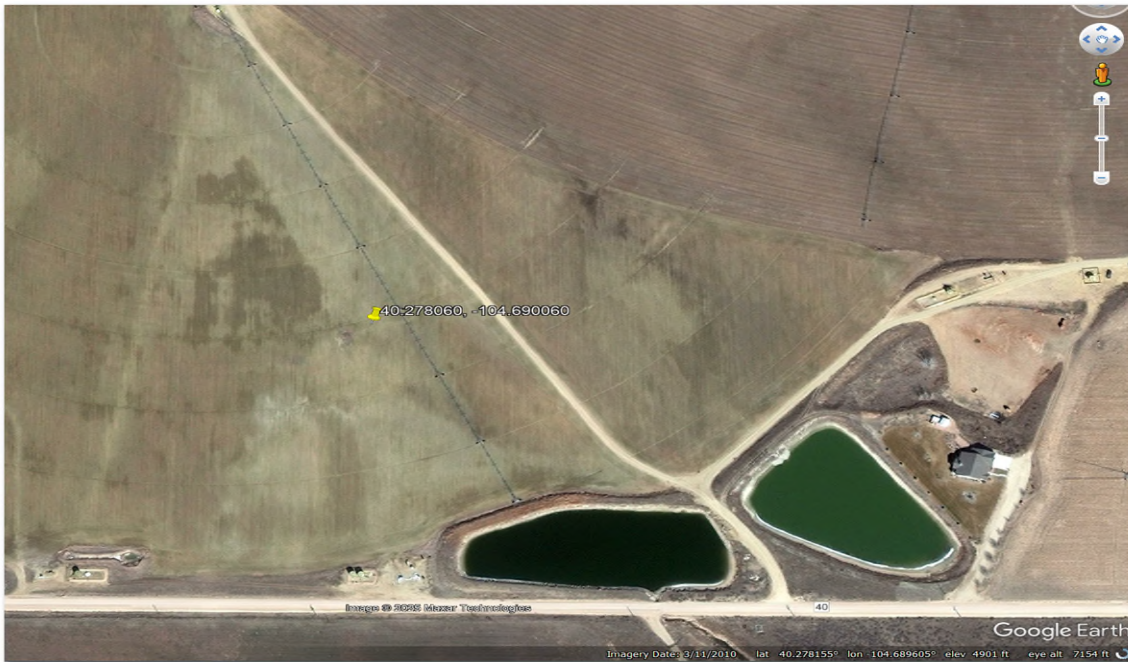
Photograph 4: View facing west as required in Energy and Carbon Management Commission (ECMC) Rule 1004.
Photo Taken from GPS 40.278061, -104.689651



Attachments: Historic Imagery



Imagery Date: April 5, 2006

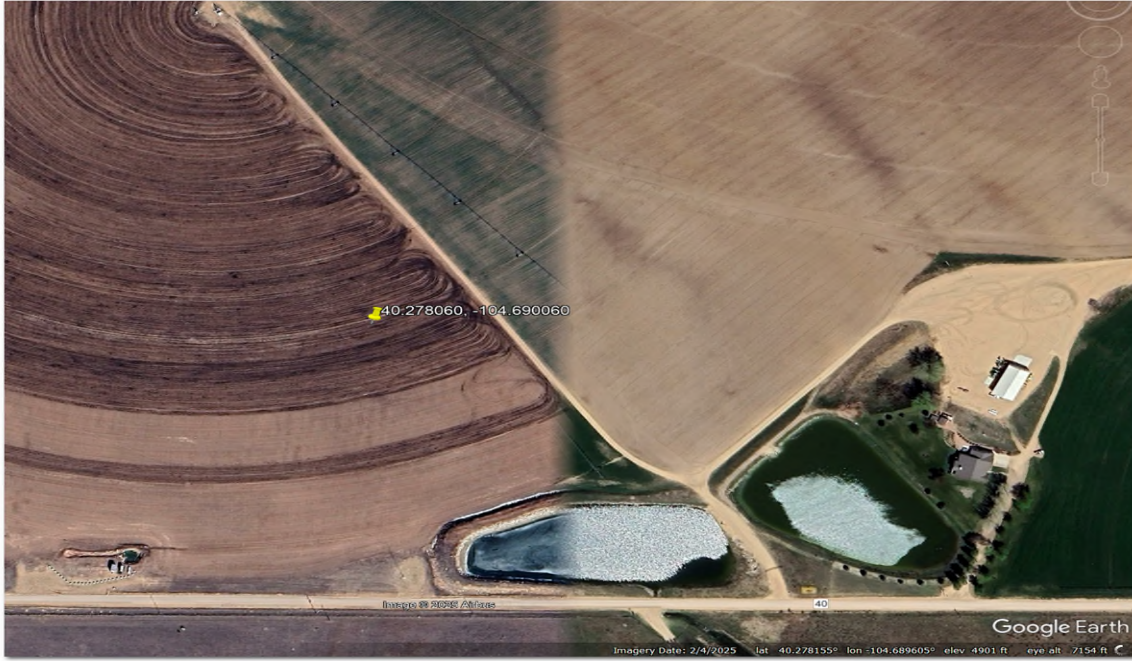


Imagery Date: March 11, 2010

Site Name: Spayd 23-29 AL
Imagery Source: Google Earth



Attachments: Historic Imagery



Imagery Date: February 4, 2025

Site Name: Spayd 23-29 AL
Imagery Source: Google Earth

