



LEGEND:

-  PREVIOUS SOIL SAMPLE (REMOVED)
-  CONFIRMATION SOIL SAMPLE

NOTES:
 VALUES PRESENTED IN **BOLD** EXCEED CECMC TABLE 915-1 REGULATORY LIMITS
 ALL LOCATIONS ARE APPROXIMATE UNLESS NOTED OTHERWISE

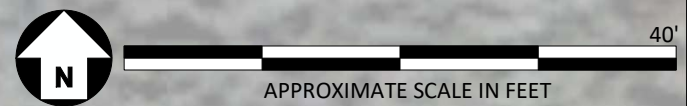
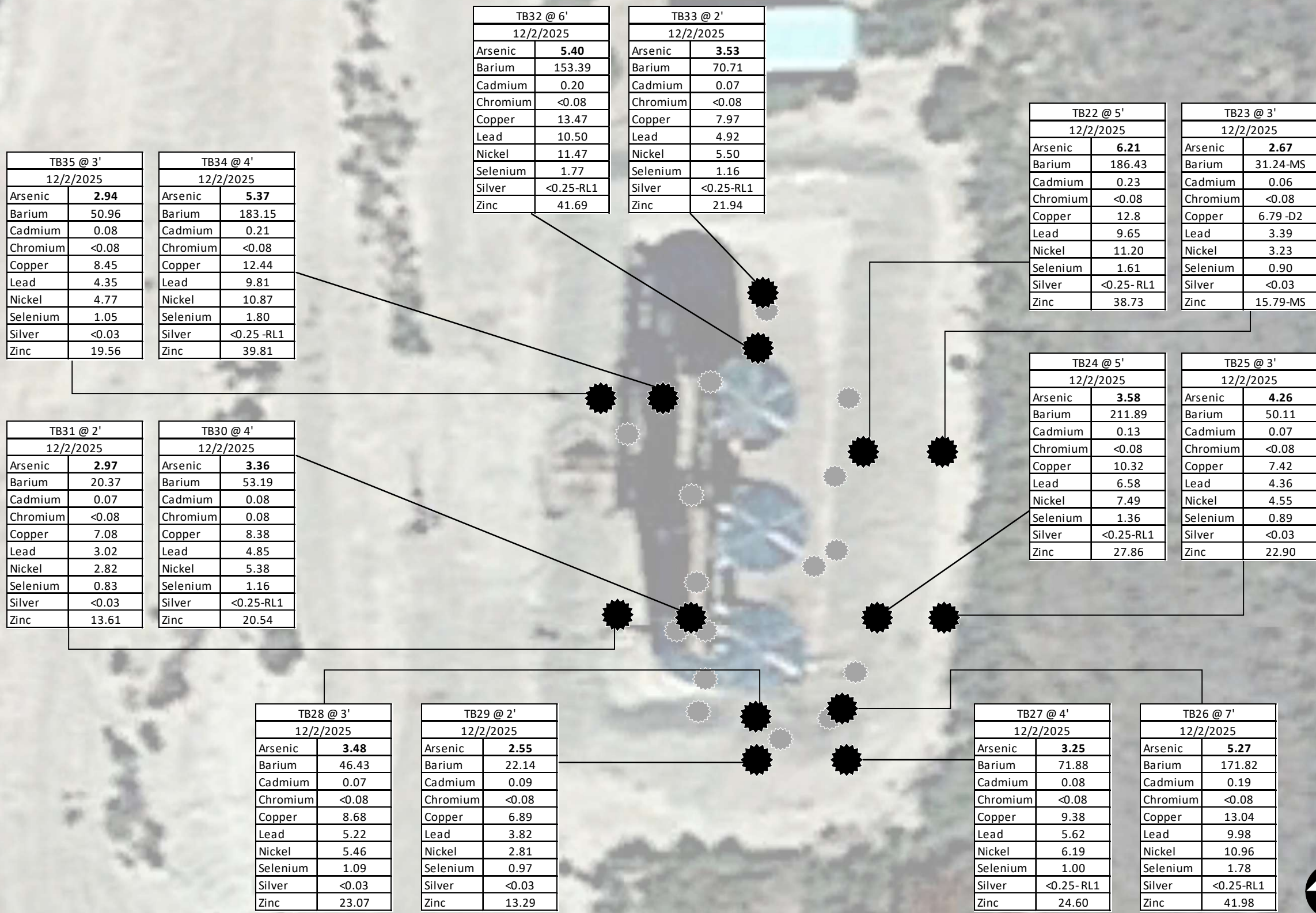
CECMC Table 915-1 Soil Screening Levels	
EC	<4 mmhos/cm
SAR	<6
pH	6-8.3
Boron	2 mg/l

CECMC- Colorado Energy & Carbon Management Commission
 EC- Electrical conductivity Mmhos/cm- millimhos per centimeter
 Mg/l- milligrams per liter
 SAR- Sodium absorption ratio

TRADE WINDS 1-28
 SOIL SAMPLE LOCATION MAP
 ECMC REM #38457
 INVESTMENT EQUIPMENT



Imagery source: Google Earth; 2016 Google



LEGEND:
 PREVIOUS SOIL SAMPLE (REMOVED)
 CONFIRMATION SOIL SAMPLE

NOTES:
 VALUES PRESENTED IN **BOLD** EXCEED CECMC TABLE 915-1 REGULATORY LIMITS
 ALL LOCATIONS ARE APPROXIMATE UNLESS NOTED OTHERWISE

CECMC Table 915-1 Soil Screening Levels		
Compound	Residential (mg/kg)	Protection of Groundwater (mg/kg)
Arsenic	0.68	0.29 (M)
Barium	15000	82 (M)
Cadmium	71	0.38 (M)
Chromium (VI)	0.3	0.00067 (R)
Copper	3100	46 (M)
Lead	400	14 (M)
Nickel	1500	26 (R)
Selenium	390	0.26 (M)
Silver	390	0.8 (R)
Zinc	23000	370 (R)

mg/kg- milligrams per kilogram
 (R)- Risk based screening level
 (M)- Drinking water maximum contaminant level
 CECMC- Colorado Energy & Carbon Management Commission



TRADE WINDS 1-28
 SOIL SAMPLE LOCATION MAP
 ECOMC REM #38457
 INVESTMENT EQUIPMENT



Imagery source: Google Earth; 2016 Google



LEGEND:

-  SOIL SAMPLE LOCATION
-  SPILL LOCATION

NOTES:
 ALL LOCATIONS ARE APPROXIMATE UNLESS NOTED OTHERWISE

TRADE WINDS 1-28
 SOIL SAMPLE LOCATION MAP
 ECMC REM #38457
 INVESTMENT EQUIPMENT



Imagery source: Google Earth; 2016 Google