

DATE:	10/29/2025
DESIGNED BY:	JW
DRAWN BY:	JS

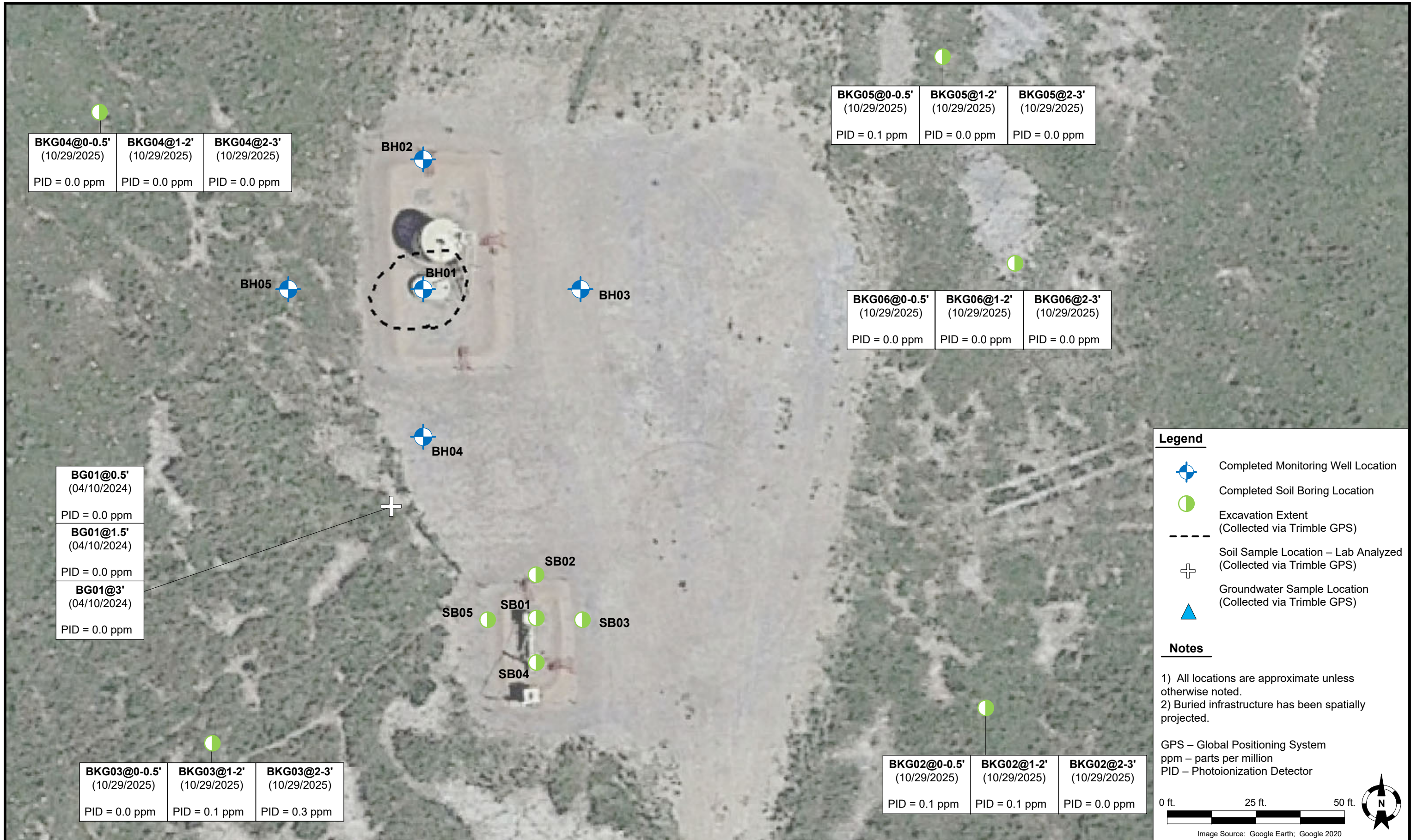


**Tasman, Inc.**  
 4725 N Independence St  
 Wheat Ridge, CO 80033


**Noble Energy, Inc. (100322) – DJ Basin**  
**Hanscome K11-1**  
 SWNW, Section 11, Township 4 North, Range 65 West  
 Weld County, Colorado

Soil Boring Locations Map

FIGURE  
1



DATE:	10/29/2025
DESIGNED BY:	JW
DRAWN BY:	JS

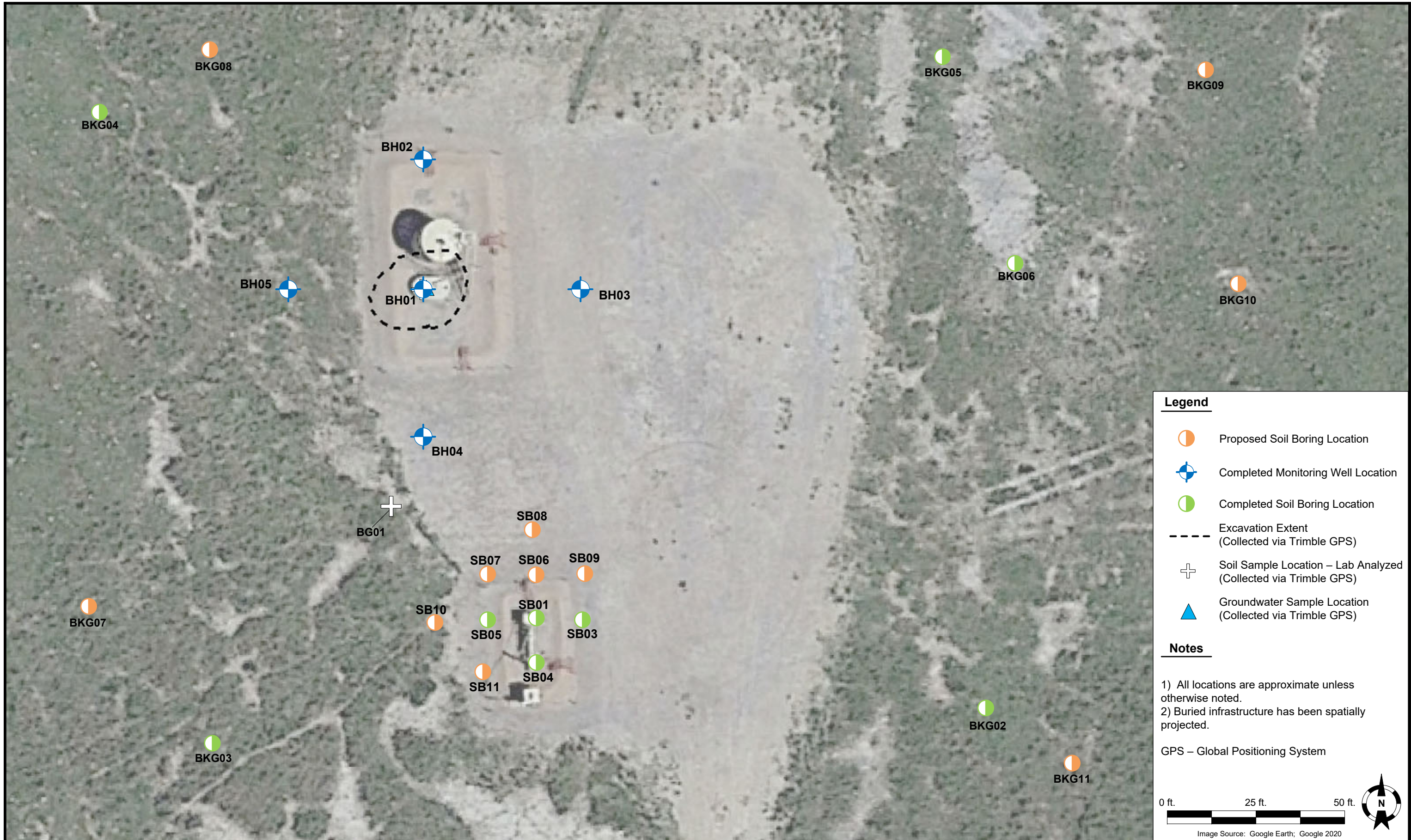


**Tasman, Inc.**  
 4725 N Independence St  
 Wheat Ridge, CO 80033

**Noble Energy, Inc. (100322) – DJ Basin**  
**Hanscome K11-1**  
 SWNW, Section 11, Township 4 North, Range 65 West  
 Weld County, Colorado

**BACKGROUND SOIL BORING**  
**LOCATION MAP**

**FIGURE**  
**2**



DATE:	10/29/2025
DESIGNED BY:	JW
DRAWN BY:	JS



**Tasman, Inc.**  
 4725 N Independence St  
 Wheat Ridge, CO 80033

**Noble Energy, Inc. (100322) – DJ Basin**  
**Hanscome K11-1**  
 SWNW, Section 11, Township 4 North, Range 65 West  
 Weld County, Colorado

**PROPOSED SOIL BORING LOCATION MAP**

**FIGURE 3**

**TABLE 1**  
**FIELD DATA SUMMARY TABLE**  
**(NOBLE ENERGY, INC.)**  
**HANSCOME K11-1, WELD COUNTY, COLORADO**  
**REM # 34167**



Sample ID	Sample Date	Depth (ft. bgs)	GPS Data <sup>1</sup> Latitude/Longitude		PDOP Value	VOC Concentration <sup>2</sup> (ppm)
AST01@0.5'	4/10/2024	0.5	40.328879	-104.637659	0.9	0.0
MH01@0.5'	4/10/2024	0.5	40.328495	-104.637574	0.8	0.0
SEP01-DL@3'	4/10/2024	3	40.328562	-104.637574	0.8	10.2
SEP01-FL@3'	4/10/2024	3	40.328563	-104.637586	0.8	41.1
FS01@3'	4/10/2024	3	40.328817	-104.637696	NC	44.4
SS01@1.5'	4/10/2024	1.5	40.328851	-104.637687	0.8	0.2
SS02@1.5'	4/10/2024	1.5	40.328824	-104.637648	0.8	0.0
SS03@1.5'	4/10/2024	1.5	40.328791	-104.637688	0.8	1.0
SS04@1.5'	4/10/2024	1.5	40.328825	-104.637731	0.8	0.1
BG01@0.5'	4/10/2024	0.5	40.328650	-104.637727	0.8	0.0
BG01@1.5'	4/10/2024	1.5	40.328650	-104.637727	0.8	0.0
BG01@3'	4/10/2024	3	40.328650	-104.637727	0.8	0.0
GW01	4/10/2024	3	40.328817	-104.637696	NC	NC
SB01@2-3'	10/24/2025	2-3	40.328561	-104.637584	0.8	381.1
SB01@5-6'	10/24/2025	5-6	40.328561	-104.637584	0.8	18.5
SB01@8-9'	10/24/2025	8-9	40.328561	-104.637584	0.8	0.0
SB02@2-3'	10/24/2025	2-3	40.328594	-104.637587	0.9	0.0
SB03@2-3'	10/24/2025	2-3	40.328559	-104.637543	0.8	0.0
SB04@2-3'	10/24/2025	2-3	40.328526	-104.637587	0.8	0.0
SB05@2-3'	10/24/2025	2-3	40.328568	-104.637640	0.8	41.9
SB05@7-8'	10/24/2025	7-8	40.328568	-104.637640	0.8	0.0
BH01@2-3'	10/24/2025	2-3	40.328817	-104.637693	0.8	0.0
BH01@5-6'	10/24/2025	5-6	40.328817	-104.637693	0.8	11.6

**TABLE 1**  
**FIELD DATA SUMMARY TABLE**  
**(NOBLE ENERGY, INC.)**  
**HANSCOME K11-1, WELD COUNTY, COLORADO**  
**REM # 34167**



Sample ID	Sample Date	Depth (ft. bgs)	GPS Data <sup>1</sup> Latitude/Longitude		PDOP Value	VOC Concentration <sup>2</sup> (ppm)
BH01@12-13'	10/24/2025	12-13	40.328817	-104.637693	0.8	0.0
BH02@2-3'	10/24/2025	2-3	40.328918	-104.637690	0.8	0.0
BH02@5-6'	10/24/2025	5-6	40.328918	-104.637690	0.8	0.0
BH02@12-13'	10/24/2025	12-13	40.328918	-104.637690	0.8	0.0
BH03@2-3'	10/24/2025	2-3	40.328821	-104.637551	0.8	0.0
BH03@5-6'	10/24/2025	5-6	40.328821	-104.637551	0.8	0.0
BH03@12-13'	10/24/2025	12-13	40.328821	-104.637551	0.8	0.0
BH04@2-3'	10/24/2025	2-3	40.328730	-104.637695	0.8	0.0
BH04@5-6'	10/24/2025	5-6	40.328730	-104.637695	0.8	0.0
BH04@12-13'	10/24/2025	12-13	40.328730	-104.637695	0.8	0.0
BH05@2-3'	10/24/2025	2-3	40.328818	-104.637829	0.8	0.5
BH05@5-6'	10/24/2025	5-6	40.328818	-104.637829	0.8	0.0
BH05@12-13'	10/24/2025	12-13	40.328818	-104.637829	0.8	0.0
BKG02@0-0.5'	10/29/2025	0-0.5	40.328490	-104.637139	0.9	0.1
BKG02@1-2'	10/29/2025	1-2	40.328490	-104.637139	0.9	0.1
BKG02@2-3'	10/29/2025	2-3	40.328490	-104.637139	0.9	0.0
BKG03@0-0.5'	10/29/2025	0-0.5	40.328486	-104.637884	0.9	0.0
BKG03@1-2'	10/29/2025	1-2	40.328486	-104.637884	0.9	0.1
BKG03@2-3'	10/29/2025	2-3	40.328486	-104.637884	0.9	0.3
BKG04@0-0.5'	10/29/2025	0-0.5	40.328959	-104.638018	0.8	0.0
BKG04@1-2'	10/29/2025	1-2	40.328959	-104.638018	0.8	0.0
BKG04@2-3'	10/29/2025	2-3	40.328959	-104.638018	0.8	0.0
BKG05@0-0.5'	10/29/2025	0-0.5	40.328993	-104.637182	0.9	0.1

**TABLE 1**  
**FIELD DATA SUMMARY TABLE**  
**(NOBLE ENERGY, INC.)**  
**HANSCOME K11-1, WELD COUNTY, COLORADO**  
**REM # 34167**



Sample ID	Sample Date	Depth (ft. bgs)	GPS Data <sup>1</sup> Latitude/Longitude		PDOP Value	VOC Concentration <sup>2</sup> (ppm)
BKG05@1-2'	10/29/2025	1-2	40.328993	-104.637182	0.9	0.0
BKG05@2-3'	10/29/2025	2-3	40.328993	-104.637182	0.9	0.0
BKG06@0-0.5'	10/29/2025	0-0.5	40.328829	-104.637074	1.0	0.0
BKG06@1-2'	10/29/2025	1-2	40.328829	-104.637074	1.0	0.0
BKG06@2-3'	10/29/2025	2-3	40.328829	-104.637074	1.0	0.0

**Notes:**

1. Global Positioning System (GPS) data is provided in decimal degrees using North American Datum (NAD) 83 UTM Zone 13 North.

2. Volatile organic compound (VOC) concentrations are measured in the field using a photoionization detector (PID).

PDOP = Position Dilution of Precision

ppm = Parts per million

ft. = Feet

bgs = Below ground surface

NC = Not collected

NA = Not analyzed

Source material characterization sample, excavated and transported off site for disposal.

Material excavated and transported off site for disposal.

**TABLE 2**  
**SUMMARY OF VOLATILE ORGANIC SOIL CHEMISTRY DATA**  
**(NOBLE ENERGY, INC.)**  
**HANSCOME K11-1, WELD COUNTY, COLORADO**  
**REM # 34167**



Sample ID	Sample Date	Depth (ft. bgs)	Benzene (mg/kg)	Toluene (mg/kg)	Ethyl-Benzene (mg/kg)	Xylenes (mg/kg)	1,2,4-Trimethyl-Benzene (mg/kg)	1,3,5-Trimethyl-Benzene (mg/kg)	Naphthalene (mg/kg)	TPH (mg/kg)	TPH GRO (mg/kg)	TPH DRO (mg/kg)	TPH ORO (mg/kg)
ECMC Table 915-1 Limits (Residential SSL)			1.2	490	5.8	58	30	27	2	500	500**		
ECMC Table 915-1 Limits (Protection of Groundwater SSL)			0.0026	0.69	0.78	9.9	0.0081	0.0087	0.0038	500	500**		
AST01@0.5'	4/10/2024	0.5	<0.0020	<0.0050	<0.0050	<0.010	<0.0050	<0.0050	<0.0038	<50	<0.50	<50	<50
SEP01-DL@3'	4/10/2024	3	<0.0020	<0.0050	<0.0050	0.0320	<b>0.0140</b>	<0.0050	<0.0038	3.40	3.40	<50	<50
SEP01-FL@3'	4/10/2024	3	<b>0.0800</b>	0.0340	0.330	1.40	<b>0.4300</b>	<b>0.950</b>	<b>0.0160</b>	37.0	37.0	<50	<50
FS01@3'	4/10/2024	3	<0.0020	<0.0050	<0.0050	<0.010	<0.0050	<0.0050	<0.0038	<50	<0.50	<50	<50
SS03@1.5'	4/10/2024	1.5	<0.0020	<0.0050	<0.0050	<0.010	<0.0050	<0.0050	<0.0038	<50	<0.50	<50	<50
BH01@2-3'	10/24/2025	2-3	<0.0011	<0.0022	<0.0022	<0.0022	<0.0022	<0.0022	<0.0022	150.9	<0.22	100	50.9
BH01@5-6'	10/24/2025	5-6	<0.0013	<0.0026	<0.0026	<0.0026	<0.0026	<0.0026	<0.0025	90.63	4.93	59.8	25.9
BH01@12-13'	10/24/2025	12-13	<0.0012	<0.0024	<0.0024	<0.0024	<0.0024	<0.0024	<0.0025	<7.4	<0.24	<4.9	<7.4
BH02@2-3'	10/24/2025	2-3	<0.0012	<0.0025	<0.0025	<0.0025	<0.0025	<0.0025	<0.0027	<7.3	<0.25	<4.8	<7.3
BH02@5-6'	10/24/2025	5-6	<0.0015	<0.0029	<0.0029	<0.0029	<0.0029	<0.0029	<0.0030	<8.5	<0.29	<5.7	<8.5
BH02@12-13'	10/24/2025	12-13	<0.0011	<0.0023	<0.0023	<0.0023	<0.0023	<0.0023	<0.0025	<7.1	<0.23	<4.7	<7.1
BH03@2-3'	10/24/2025	2-3	<0.0014	<0.0028	<0.0028	<0.0028	<0.0028	<0.0028	<0.0028	<8.2	<0.28	<5.5	<8.2
BH03@5-6'	10/24/2025	5-6	<0.0014	<0.0029	<0.0029	<0.0029	<0.0029	<0.0029	<0.0030	<9.3	<0.29	<6.2	<9.3
BH03@12-13'	10/24/2025	12-13	<0.0011	<0.0022	<0.0022	<0.0022	<0.0022	<0.0022	<0.0024	<6.9	<0.22	<4.6	<6.9
BH04@2-3'	10/24/2025	2-3	<0.0015	<0.0030	<0.0030	<0.0030	<0.0030	<0.0030	<0.0031	<8.9	<0.30	<5.9	<8.9
BH04@5-6'	10/24/2025	5-6	<0.0016	<0.0032	<0.0032	<0.0032	<0.0032	<0.0032	<0.0031	<9.7	<0.32	<6.5	<9.7
BH04@12-13'	10/24/2025	12-13	<0.0011	0.0035	<0.0023	0.0059	0.0028	<0.0023	<0.0024	<7.0	<0.23	<4.7	<7.0
BH05@2-3'	10/24/2025	2-3	<0.0011	<0.0023	<0.0023	<0.0023	<0.0023	<0.0023	<0.0024	<7.0	<0.23	<4.6	<7.0
BH05@5-6'	10/24/2025	5-6	<0.0012	<0.0024	<0.0024	<0.0024	<0.0024	<0.0024	<0.0024	<7.1	<0.24	<4.7	<7.1
BH05@12-13'	10/24/2025	12-13	<0.0012	<0.0024	<0.0024	<0.0024	<0.0024	<0.0024	<0.0025	<7.0	<0.24	<4.6	<7.0
SB01@2-3'	10/24/2025	2-3	<b>0.0239</b>	0.288	<b>1.69</b>	<b>22.9</b>	<b>67.5</b>	<0.0028	<0.0028	<b>2,221.2</b>	<b>1690</b>	<b>445</b>	<b>86.2</b>
SB01@5-6'	10/24/2025	5-6	<0.0014	<0.0028	<0.0028	0.0149	0.0049	0.0062	<0.0028	<b>1,931.95</b>	<b>3.95</b>	<b>1650</b>	<b>278</b>
SB01@8-9'	10/24/2025	8-9	<0.0012	<0.0023	<0.0023	<0.0023	<0.0023	<0.0023	<0.0022	<6.7	<0.23	<4.5	<6.7
SB02@2-3'	10/24/2025	2-3	<0.0014	<0.0028	<0.0028	0.0066	<b>0.0145</b>	0.0032	<0.0028	<8.3	<0.28	<5.6	<8.3
SB03@2-3'	10/24/2025	2-3	<0.0014	<0.0027	<0.0027	0.0028	0.0059	<0.0027	<0.0029	<8.8	<0.27	<5.9	<8.8
SB04@2-3'	10/24/2025	2-3	<0.0014	<0.0028	<0.0028	<0.0028	0.0031	<0.0028	<0.0028	<8.4	<0.28	<5.6	<8.4
SB05@2-3'	10/24/2025	2-3	<0.0012	<0.0024	0.0468	3.28	<b>9.83</b>	<0.0024	<0.0024	<b>595.8</b>	<b>566</b>	<b>22.1</b>	<b>7.7</b>
SB05@7-8'	10/24/2025	7-8	<0.0013	<0.0026	<0.0026	<0.0026	<0.0026	<0.0026	<0.0027	<7.9	<0.26	<5.2	<7.9

TABLE 2  
SUMMARY OF VOLATILE ORGANIC SOIL CHEMISTRY DATA  
(NOBLE ENERGY, INC.)  
HANSCOME K11-1, WELD COUNTY, COLORADO  
REM # 34167



Sample ID	Sample Date	Depth (ft. bgs)	Benzene (mg/kg)	Toluene (mg/kg)	Ethyl-Benzene (mg/kg)	Xylenes (mg/kg)	1,2,4-Trimethyl-Benzene (mg/kg)	1,3,5-Trimethyl-Benzene (mg/kg)	Naphthalene (mg/kg)	TPH (mg/kg)	TPH GRO (mg/kg)	TPH DRO (mg/kg)	TPH ORO (mg/kg)
ECMC Table 915-1 Limits (Residential SSL)			1.2	490	5.8	58	30	27	2	500	500**		
ECMC Table 915-1 Limits (Protection of Groundwater SSL)			0.0026	0.69	0.78	9.9	0.0081	0.0087	0.0038	500	500**		

**Notes:**

1. **Bold** values exceed the ECMC Table 915-1 limit(s).
2. Red & blue highlighted soil analytical values indicate an exceedance of the referenced soil screening level (SSL).
3. \*\* Summation of GRO+DRO+ORO must be less than 500 mg/kg.

ECMC = Energy and Carbon Management Commission

(<) = Analytical result is less than the indicated laboratory reporting limit.

TPH-GRO = Total petroleum hydrocarbons - gasoline range organics

TPH-DRO = Total petroleum hydrocarbons - diesel range organics

TPH-ORO = Total petroleum hydrocarbons - oil range organics

mg/kg = Milligrams per kilogram

ft. = Feet

bgs = Below ground surface

NA = Not analyzed

Source material characterization sample, excavated and transported off site for disposal.

Material excavated and transported off site for disposal.

TABLE 3  
SUMMARY OF POLYCYCLIC AROMATIC HYDROCARBON SOIL CHEMISTRY DATA  
(NOBLE ENERGY, INC.)  
HANSCOME K11-1, WELD COUNTY, COLORADO  
REM # 34167



Sample ID	Sample Date	Depth (ft. bgs)	Acenaphthene (mg/kg)	Anthracene (mg/kg)	Benzo (a) Anthracene (mg/kg)	Benzo (a) Pyrene (mg/kg)	Benzo (b) Fluoranthene (mg/kg)	Benzo (k) Fluoranthene (mg/kg)	Chrysene (mg/kg)	Dibenzo (a,h) Anthracene (mg/kg)	Fluoranthene (mg/kg)	Fluorene (mg/kg)	Indeno (1,2,3-cd) Pyrene (mg/kg)	Pyrene (mg/kg)	1-Methyl-Naphthalene (mg/kg)	2-Methyl-Naphthalene (mg/kg)
ECMC Table 915-1 Limits (Residential SSL)			360	1800	1.1	0.11	1.1	11	110	0.11	240	240	1.1	180	18	24
ECMC Table 915-1 Limits (Protection of Groundwater SSL)			0.55	5.8	0.011	0.24	0.3	2.9	9	0.096	8.9	0.54	0.98	1.3	0.006	0.019
AST01@0.5'	4/10/2024	0.5	<0.00500	<0.00500	<0.00500	<0.00500	<0.00500	<0.00500	<0.00500	<0.00500	<0.00500	<0.00500	<0.00500	<0.00500	<0.00500	<0.00500
SEP01-DL@3'	4/10/2024	3	<0.00500	<0.00500	<0.00500	<0.00500	<0.00500	<0.00500	<0.00500	<0.00500	<0.00500	0.00591	<0.00500	<0.00500	0.00824	<0.00500
SEP01-FL@3'	4/10/2024	3	<0.00500	<0.00500	<0.00500	<0.00500	<0.00500	<0.00500	<0.00500	<0.00500	<0.00500	<0.00500	<0.00500	<0.00500	0.125	0.131
FS01@3'	4/10/2024	3	<0.00500	<0.00500	<0.00500	<0.00500	<0.00500	<0.00500	<0.00500	<0.00500	<0.00500	<0.00500	<0.00500	<0.00500	<0.00500	<0.00500
SS03@1.5'	4/10/2024	1.5	<0.00500	<0.00500	<0.00500	<0.00500	<0.00500	<0.00500	<0.00500	<0.00500	<0.00500	<0.00500	<0.00500	<0.00500	<0.00500	<0.00500
BH01@2-3'	10/24/2025	2-3	<0.0043	<0.0043	<0.0054	<0.0043	<0.0043	<0.0043	<0.0043	<0.0043	<0.0043	<0.0043	<0.0043	<0.0043	<0.0043	<0.0043
BH01@5-6'	10/24/2025	5-6	<0.0051	<0.0051	<0.0064	<0.0051	<0.0051	<0.0051	<0.0051	<0.0051	<0.0051	<0.0051	<0.0051	<0.0051	<0.0051	<0.0051
BH01@12-13'	10/24/2025	12-13	<0.0051	<0.0051	<0.0063	<0.0051	<0.0051	<0.0051	<0.0051	<0.0051	<0.0051	<0.0051	<0.0051	<0.0051	<0.0051	<0.0051
BH02@2-3'	10/24/2025	2-3	<0.0053	<0.0053	<0.0066	<0.0053	<0.0053	<0.0053	<0.0053	<0.0053	<0.0053	<0.0053	<0.0053	<0.0053	<0.0053	<0.0053
BH02@5-6'	10/24/2025	5-6	<0.0061	<0.0061	<0.0076	<0.0061	<0.0061	<0.0061	<0.0061	<0.0061	<0.0061	<0.0061	<0.0061	<0.0061	<0.0061	<0.0061
BH02@12-13'	10/24/2025	12-13	<0.0050	<0.0050	<0.0063	<0.0050	<0.0050	<0.0050	<0.0050	<0.0050	<0.0050	<0.0050	<0.0050	<0.0050	<0.0050	<0.0050
BH03@2-3'	10/24/2025	2-3	<0.0055	<0.0055	<0.0069	<0.0055	<0.0055	<0.0055	<0.0055	<0.0055	<0.0055	<0.0055	<0.0055	<0.0055	<0.0055	<0.0055
BH03@5-6'	10/24/2025	5-6	<0.0060	<0.0060	<0.0075	<0.0060	<0.0060	<0.0060	<0.0060	<0.0060	<0.0060	<0.0060	<0.0060	<0.0060	<0.0060	<0.0060
BH03@12-13'	10/24/2025	12-13	<0.0047	<0.0047	<0.0059	<0.0047	<0.0047	<0.0047	<0.0047	<0.0047	<0.0047	<0.0047	<0.0047	<0.0047	<0.0047	<0.0047
BH04@2-3'	10/24/2025	2-3	<0.0062	<0.0062	<0.0077	<0.0062	<0.0062	<0.0062	<0.0062	<0.0062	<0.0062	<0.0062	<0.0062	<0.0062	<0.0062	<0.0062
BH04@5-6'	10/24/2025	5-6	<0.0062	<0.0062	<0.0078	<0.0062	<0.0062	<0.0062	<0.0062	<0.0062	<0.0062	<0.0062	<0.0062	<0.0062	<0.0062	<0.0062
BH04@12-13'	10/24/2025	12-13	<0.0047	<0.0047	<0.0059	<0.0047	<0.0047	<0.0047	<0.0047	<0.0047	<0.0047	<0.0047	<0.0047	<0.0047	<0.0047	<0.0047
BH05@2-3'	10/24/2025	2-3	<0.0049	<0.0049	<0.0061	<0.0049	<0.0049	<0.0049	<0.0049	<0.0049	<0.0049	<0.0049	<0.0049	<0.0049	<0.0049	<0.0049
BH05@5-6'	10/24/2025	5-6	<0.0047	<0.0047	<0.0059	<0.0047	<0.0047	<0.0047	<0.0047	<0.0047	<0.0047	<0.0047	<0.0047	<0.0047	<0.0047	<0.0047
BH05@12-13'	10/24/2025	12-13	<0.0050	<0.0050	<0.0063	<0.0050	<0.0050	<0.0050	<0.0050	<0.0050	<0.0050	<0.0050	<0.0050	<0.0050	<0.0050	<0.0050
SB01@2-3'	10/24/2025	2-3	<0.0056	<0.0056	<0.0071	<0.0056	<0.0056	<0.0056	<0.0056	<0.0056	<0.0056	<0.0056	<0.0056	<0.0056	0.197	<0.0056
SB01@5-6'	10/24/2025	5-6	<0.0056	<0.0056	<0.0071	<0.0056	<0.0056	<0.0056	<0.0056	<0.0056	0.0089	<0.0056	<0.0056	<0.0056	0.732	<0.0056
SB01@8-9'	10/24/2025	8-9	<0.0044	<0.0044	<0.0055	<0.0044	<0.0044	<0.0044	<0.0044	<0.0044	<0.0044	<0.0044	<0.0044	<0.0044	<0.0044	<0.0044
SB02@2-3'	10/24/2025	2-3	<0.0056	<0.0056	<0.0070	<0.0056	<0.0056	<0.0056	<0.0056	<0.0056	<0.0056	<0.0056	<0.0056	<0.0056	<0.0056	<0.0056
SB03@2-3'	10/24/2025	2-3	<0.0058	<0.0058	<0.0073	<0.0058	<0.0058	<0.0058	<0.0058	<0.0058	<0.0058	<0.0058	<0.0058	<0.0058	<0.0058	<0.0058
SB04@2-3'	10/24/2025	2-3	<0.0056	<0.0056	<0.0069	<0.0056	<0.0056	<0.0056	<0.0056	<0.0056	<0.0056	<0.0056	<0.0056	<0.0056	<0.0056	<0.0056
SB05@2-3'	10/24/2025	2-3	<0.0048	<0.0048	<0.0061	<0.0048	<0.0048	<0.0048	<0.0048	<0.0048	<0.0048	<0.0048	<0.0048	<0.0048	0.0065	<0.0048
SB05@7-8'	10/24/2025	7-8	<0.0054	<0.0054	<0.0067	<0.0054	<0.0054	<0.0054	<0.0054	<0.0054	<0.0054	<0.0054	<0.0054	<0.0054	<0.0054	<0.0054

**Notes:**

1. **Bold** values exceed the ECMC Table 915-1 limit(s).
2. Red & blue highlighted soil analytical values indicate an exceedance of the referenced soil screening level (SSL).
3. \* Indicates laboratory minimum detection limit in excess of SSL.

ECMC = Energy and Carbon Management Commission

(<) = Analytical result is less than the indicated laboratory reporting limit.

mg/kg = Milligrams per kilogram

ft. = Feet

bgs = Below ground surface

NA = Not analyzed

Source material characterization sample, excavated and transported off site for disposal.

Material excavated and transported off site for disposal.

**TABLE 4**  
**SUMMARY OF SOIL SUITABILITY FOR RECLAMATION**  
**(NOBLE ENERGY, INC.)**  
**HANSCOME K11-1, WELD COUNTY, COLORADO**  
**REM # 34167**



Sample ID	Sample Date	Depth (ft. bgs)	pH (Standard Units)	EC (mmhos/cm)	SAR (Standard Units)	Boron (mg/L)
ECMC Table 915-1 Soil Suitability Limits			6 - 8.3	<4	<6	2
AST01@0.5'	4/10/2024	0.5	8.95	0.114	0.0626	<2.00
SEP01-DL@3'	4/10/2024	3	7.35	1.22	1.51	<2.00
SEP01-FL@3'	4/10/2024	3	7.83	1.12	2.34	<2.00
FS01@3'	4/10/2024	3	9.26	0.733	5.50	<2.00
SS03@1.5'	4/10/2024	1.5	8.37	1.65	2.30	<2.00
BH01@2-3'	10/24/2025	2-3	7.51	4.4	3.08	1.01
BH01@5-6'	10/24/2025	5-6	7.63	5.2	4.38	<0.50
BH01@12-13'	10/24/2025	12-13	7.70	2.5	5.32	<0.50
BH02@2-3'	10/24/2025	2-3	7.87	4.4	3.02	0.618
BH02@5-6'	10/24/2025	5-6	7.73	4.6	3.70	<0.50
BH02@12-13'	10/24/2025	12-13	7.58	2.8	5.10	<0.50
BH03@2-3'	10/24/2025	2-3	7.91	4.4	3.49	0.576
BH03@5-6'	10/24/2025	5-6	7.86	2.8	5.00	<0.50
BH03@12-13'	10/24/2025	12-13	7.74	2.1	4.59	<0.50
BH04@2-3'	10/24/2025	2-3	7.81	4.4	3.95	<0.50
BH04@5-6'	10/24/2025	5-6	7.70	3.1	5.65	<0.50
BH04@12-13'	10/24/2025	12-13	7.57	2.8	5.74	<0.50
BH05@2-3'	10/24/2025	2-3	7.80	4.2	7.86	<0.50
BH05@5-6'	10/24/2025	5-6	7.77	3.3	5.35	<0.50
BH05@12-13'	10/24/2025	12-13	7.76	2.1	5.23	<0.50
SB01@2-3'	10/24/2025	2-3	7.90	3.1	7.90	0.808
SB01@5-6'	10/24/2025	5-6	8.28	2.6	7.81	1.19
SB01@8-9'	10/24/2025	8-9	7.76	2.9	5.32	<0.50
SB02@2-3'	10/24/2025	2-3	7.74	3.9	5.39	0.501
SB03@2-3'	10/24/2025	2-3	7.77	5.2	4.23	<0.50
SB04@2-3'	10/24/2025	2-3	7.48	4.4	2.52	0.561
SB05@2-3'	10/24/2025	2-3	7.63	5.8	5.64	0.996
SB05@7-8'	10/24/2025	7-8	7.69	3.2	5.26	<0.50
BG01@0.5'	4/10/2024	0.5	NC	NC	NC	NC
BG01@1.5'	4/10/2024	1.5	NC	NC	NC	NC
BG01@3'	4/10/2024	3	NC	NC	NC	NC
BKG02@0-0.5'	10/29/2025	0-0.5	7.72	10.6	11.1	1.02
BKG02@1-2'	10/29/2025	1-2	7.45	9.6	9.39	<0.50
BKG02@2-3'	10/29/2025	2-3	7.66	5.0	3.95	<0.50
BKG03@0-0.5'	10/29/2025	0-0.5	6.02	10.9	14.6	1.56

**TABLE 4**  
**SUMMARY OF SOIL SUITABILITY FOR RECLAMATION**  
**(NOBLE ENERGY, INC.)**  
**HANSCOME K11-1, WELD COUNTY, COLORADO**  
**REM # 34167**



Sample ID	Sample Date	Depth (ft. bgs)	pH (Standard Units)	EC (mmhos/cm)	SAR (Standard Units)	Boron (mg/L)
ECMC Table 915-1 Soil Suitability Limits			6 - 8.3	<4	<6	2
BKG03@1-2'	10/29/2025	1-2	7.85	17.2	20.0	0.980
BKG03@2-3'	10/29/2025	2-3	7.85	4.00	8.52	<0.50
BKG04@0-0.5'	10/29/2025	0-0.5	7.82	16.4	19.8	<0.50
BKG04@1-2'	10/29/2025	1-2	7.74	14.6	18.6	<0.50
BKG04@2-3'	10/29/2025	2-3	8.19	5.0	14.2	<0.50
BKG05@0-0.5'	10/29/2025	0-0.5	7.92	23.9	30.2	0.990
BKG05@1-2'	10/29/2025	1-2	7.84	17.0	24.4	0.519
BKG05@2-3'	10/29/2025	2-3	7.74	14.8	20.5	<0.50
BKG06@0-0.5'	10/29/2025	0-0.5	7.90	10.5	12.8	1.47
BKG06@1-2'	10/29/2025	1-2	7.72	13.1	16.4	0.614
BKG06@2-3'	10/29/2025	2-3	7.66	6.9	8.03	0.556
Maximum Background Concentration			8.19	23.9	30.2	-

**Notes:**

1. **Bold** faced values exceed the ECMC Table 915-1 limit(s), but are within background concentrations.
2. **Bold** faced values exceed the ECMC Table 915-1 limit(s) and native background concentrations.
3. Brown highlighted soil analytical values indicate a regulatory exceedance.

ECMC = Energy and Carbon Management Commission

(<) = Analytical result is less than the indicated laboratory reporting limit.

mg/L = Milligrams per liter

ft. = Feet

bgs = Below ground surface

NA = Not analyzed

EC = Electrical conductivity

SAR = Sodium adsorption ratio

mmhos/cm = Millimohs per centimeter

Source material characterization sample, excavated and transported off site for disposal.

Material excavated and transported off site for disposal.

**TABLE 5**  
**SUMMARY OF METALS IN SOIL CHEMISTRY DATA**  
**(NOBLE ENERGY, INC.)**  
**HANSCOME K11-1, WELD COUNTY, COLORADO**  
**REM # 34167**



Sample ID	Sample Date	Depth (ft. bgs)	Arsenic (mg/kg)	Barium (mg/kg)	Cadmium (mg/kg)	Chromium (VI) <sup>6</sup> (mg/kg)	Copper (mg/kg)	Lead (mg/kg)	Nickel (mg/kg)	Selenium (mg/kg)	Silver (mg/kg)	Zinc (mg/kg)
ECMC Table 915-1 Limits (Residential SSL)			0.68	15000	71	0.3	3100	400	1500	390	390	23000
ECMC Table 915-1 Limits (Protection of Groundwater SSL)			0.29	82	0.38	0.00067	46	14	26	0.26	0.8	370
AST01@0.5'	4/10/2024	0.5	2.29	46.4	<0.200	<0.30	6.58	5.36	6.27	<0.260	<0.0200	12.4
SEP01-DL@3'	4/10/2024	3	5.19	101	0.402	<0.30	7.36	10.9	5.64	<0.260	0.0693	27.2
SEP01-FL@3'	4/10/2024	3	3.18	79.0	0.246	<0.30	6.04	8.63	4.28	2.81	0.0394	21.1
FS01@3'	4/10/2024	3	3.83	129	0.319	<0.30	7.21	10.4	5.25	<0.260	0.0599	23.7
SS03@1.5'	4/10/2024	1.5	5.73	78.0	0.394	<0.30	4.72	7.25	3.5	1.09	0.0336	15.4
BH01@2-3'	10/24/2025	2-3	3.4	69.3	0.12	<0.43	7.6	6.9	5.8	3.1	<0.065	24.6
BH01@5-6'	10/24/2025	5-6	2.3	132	0.18	<0.53	6.3	8.1	7.9	8.4	<0.071	29.3
BH01@12-13'	10/24/2025	12-13	1.6	40.0	<0.080	0.52	19.6	12.0	6.2	3.6	0.083	45.5
BH02@2-3'	10/24/2025	2-3	3.3	167	0.18	<0.51	13.1	10.1	10.6	1.6	<0.099	45.3
BH02@5-6'	10/24/2025	5-6	1.7	166	0.22	<0.59	14.5	12.1	9.9	3.5	<0.077	44.6
BH02@12-13'	10/24/2025	12-13	0.53	33.7	<0.075	1.1	6.3	4.0	3.6	0.24	<0.075	23.7
BH03@2-3'	10/24/2025	2-3	2.5	149	0.19	<0.59	15.7	10.7	10.0	4.1	<0.095	43.5
BH03@5-6'	10/24/2025	5-6	2.1	243	0.29	<0.62	18.6	15.9	12.7	11.2	<0.10	56.1
BH03@12-13'	10/24/2025	12-13	0.89	101	<0.068	<0.47	8.0	3.5	5.3	7.3	<0.068	38.3
BH04@2-3'	10/24/2025	2-3	2.7	180	0.31	<0.64	18.9	16.6	12.9	2.2	<0.085	60.0
BH04@5-6'	10/24/2025	5-6	2.1	148	0.18	<0.68	17.2	15.5	11.9	7.8	<0.11	52.7
BH04@12-13'	10/24/2025	12-13	0.91	61.1	<0.067	<0.46	6.0	4.2	3.0	1.0	<0.067	16.4
BH05@2-3'	10/24/2025	2-3	2.1	98.9	0.12	<0.48	6.7	7.0	6.2	6.7	<0.074	26.6
BH05@5-6'	10/24/2025	5-6	1.4	52.0	0.093	<0.50	4.1	4.3	4.5	0.8	<0.065	16.9
BH05@12-13'	10/24/2025	12-13	1.3	108	0.085	<0.50	10.1	9.8	10.8	0.45	<0.073	43.6
SB01@2-3'	10/24/2025	2-3	5.1	141	0.32	<0.57	21.1	14.0	14.9	1.9	<0.12	71.2
SB01@5-6'	10/24/2025	5-6	1.6	379	0.23	<0.60	17.0	11.7	8.7	3.1	<0.11	44.5
SB01@8-9'	10/24/2025	8-9	1.0	29.8	<0.072	<0.48	3.7	3.3	3.6	0.28	<0.072	14.3
SB02@2-3'	10/24/2025	2-3	3.8	152	0.29	<0.61	19.5	14.2	14.4	1.1	<0.10	71.2
SB03@2-3'	10/24/2025	2-3	3.6	180	0.23	<0.61	18.0	14.4	13.6	2.8	<0.12	70.7
SB04@2-3'	10/24/2025	2-3	5.5	168	0.35	<0.56	17.7	12.8	13.8	2.6	0.079	64.0
SB05@2-3'	10/24/2025	2-3	4.7	121	0.21	<0.49	11.8	9.4	8.4	2.6	<0.062	36.9
SB05@7-8'	10/24/2025	7-8	2.1	88.9	0.12	<0.55	7.5	6.1	6.8	2.2	<0.073	27.4
BG01@0.5'	4/10/2024	0.5	2.79	64.2	0.317	<0.30	4.14	9.71	3.98	<0.260	0.0449	20.0
BG01@1.5'	4/10/2024	1.5	2.79	45.8	0.205	<0.30	3.82	5.94	3.63	<0.260	0.0375	18.4
BG01@3'	4/10/2024	3	3.86	138	0.343	<0.30	6.74	9.06	4.85	2.56	0.0508	23.3

**TABLE 5**  
**SUMMARY OF METALS IN SOIL CHEMISTRY DATA**  
**(NOBLE ENERGY, INC.)**  
**HANSCOME K11-1, WELD COUNTY, COLORADO**  
**REM # 34167**



Sample ID	Sample Date	Depth (ft. bgs)	Arsenic (mg/kg)	Barium (mg/kg)	Cadmium (mg/kg)	Chromium (VI) <sup>6</sup> (mg/kg)	Copper (mg/kg)	Lead (mg/kg)	Nickel (mg/kg)	Selenium (mg/kg)	Silver (mg/kg)	Zinc (mg/kg)
ECMC Table 915-1 Limits (Residential SSL)			0.68	15000	71	0.3	3100	400	1500	390	390	23000
ECMC Table 915-1 Limits (Protection of Groundwater SSL)			0.29	82	0.38	0.00067	46	14	26	0.26	0.8	370
BKG02@0-0.5'	10/29/2025	0-0.5	4.5	137	0.29	<0.54	12.8	13.5	9.6	5.8	<0.081	46.5
BKG02@1-2'	10/29/2025	1-2	6.3	227	0.21	<0.59	22.1	18.9	17.3	5.1	<0.14	75.4
BKG02@2-3'	10/29/2025	2-3	6.6	231	0.24	<0.63	23.2	20.4	18.1	3.7	<0.14	80.0
BKG03@0-0.5'	10/29/2025	0-0.5	4.1	122	0.24	<0.49	14.1	14.3	10.6	2.5	<0.12	48.6
BKG03@1-2'	10/29/2025	1-2	5.0	227	0.30	<0.55	20.7	15.7	15.2	2.9	<0.12	68.9
BKG03@2-3'	10/29/2025	2-3	3.6	124	0.27	<0.56	18.1	15.2	14.4	1.1	<0.13	60.2
BKG04@0-0.5'	10/29/2025	0-0.5	5.0	197	0.29	<0.57	19.5	12.3	13.7	4.9	<0.12	59.8
BKG04@1-2'	10/29/2025	1-2	4.6	150	0.25	<0.54	18.0	12.1	13.4	5.4	<0.14	57.6
BKG04@2-3'	10/29/2025	2-3	2.7	137	0.24	<0.53	13.8	12.3	11.6	3.0	<0.12	48.3
BKG05@0-0.5'	10/29/2025	0-0.5	3.5	323	0.27	<0.54	16.4	9.5	10.3	1.9	<0.14	50.4
BKG05@1-2'	10/29/2025	1-2	5.4	173	0.25	<0.54	17.3	12.5	13.6	6.5	<0.13	66.0
BKG05@2-3'	10/29/2025	2-3	5.1	191	0.28	<0.57	21.0	14.5	15.6	18.0	<0.13	78.5
BKG06@0-0.5'	10/29/2025	0-0.5	3.6	141	0.24	<0.50	32.7	24.1	10.7	4.5	<0.12	61.9
BKG06@1-2'	10/29/2025	1-2	3.8	189	0.30	<0.56	17.6	14.2	16.3	1.5	<0.13	51.6
BKG06@2-3'	10/29/2025	2-3	5.9	136	0.29	<0.57	15.7	11.8	11.9	1.8	<0.14	49.7
1.25x Maximum Background Concentration			8.25	404	0.429	0.38	-	30.1	-	22.5	-	-

**Notes:**

1. **Bold** faced values exceed the ECMC Table 915-1 limit(s), but are within 1.25x background concentrations.
2. **Red** faced values exceed the ECMC Table 915-1 limit(s) and native background concentrations.
3. Red & blue highlighted soil analytical values indicate an exceedance of the referenced soil screening level (SSL).
4. Reporting limit used for 1.25 multiplier when all background results for a specific metal are non-detect.
5. \* Indicates laboratory minimum detection limit in excess of SSL.
6. Compound falls within the ECMC Table 915-1 footnote 9.

ECMC = Energy & Carbon Management Commission

(<) = Analytical result is less than the indicated laboratory reporting limit.

mg/kg = Milligrams per kilogram

ft. = Feet

bgs = Below ground surface

NA = Not analyzed

**TABLE 5**  
**SUMMARY OF METALS IN SOIL CHEMISTRY DATA**  
**(NOBLE ENERGY, INC.)**  
**HANSCOME K11-1, WELD COUNTY, COLORADO**  
**REM # 34167**



Sample ID	Sample Date	Depth (ft. bgs)	Arsenic (mg/kg)	Barium (mg/kg)	Cadmium (mg/kg)	Chromium (VI) <sup>6</sup> (mg/kg)	Copper (mg/kg)	Lead (mg/kg)	Nickel (mg/kg)	Selenium (mg/kg)	Silver (mg/kg)	Zinc (mg/kg)
ECMC Table 915-1 Limits (Residential SSL)			0.68	15000	71	0.3	3100	400	1500	390	390	23000
ECMC Table 915-1 Limits (Protection of Groundwater SSL)			0.29	82	0.38	0.00067	46	14	26	0.26	0.8	370

Source material characterization sample, excavated and transported off site for disposal.

Material excavated and transported off site for disposal.

**TABLE 6**  
**SUMMARY OF GROUNDWATER ELEVATION DATA AND ORGANIC CHEMISTRY DATA**  
**(NOBLE ENERGY, INC.)**  
**HANSCOME K11-1, WELD COUNTY, COLORADO**  
**REM # 34167**



Sample ID	Sample Date	Benzene (µg/L)	Toluene (µg/L)	Ethyl-Benzene (µg/L)	Xylenes (µg/L)	Naphthalene (µg/L)	1,2,4-Trimethyl-Benzene (µg/L)	1,3,5-Trimethyl-Benzene (µg/L)	Depth to Groundwater Below Ground Surface (ft)
ECMC Table 915-1 Limits		5.0	560	700	1,400	140	67	67	
GW01	04/10/2024	<b>22</b>	46	15	110	5.3	53	17	3

**Notes:**

1. **Bold** values exceed the ECMC limit(s)
2. Blue highlighted groundwater analytical values indicate a regulatory exceedance

NA = Not Analyzed

ECMC = Energy & Carbon Management Commission

(<) = Analytical result is less than the indicated laboratory reporting limit.

µg/L = micrograms per liter

ft. = Feet

TABLE 7  
SUMMARY OF INORGANIC GROUNDWATER CHEMISTRY DATA  
(NOBLE ENERGY, INC.)  
HANSCOME K11-1, WELD COUNTY, COLORADO  
REM # 34167



Sample ID	Sample Date	Total Dissolved Solids (mg/L)	Chloride Ion (mg/L)	Sulfate Ion (mg/L)
ECMC Table 915-1 Limits		<1.25 x local background	250 or <1.25 x local background	250 or <1.25 x local background
GW01	04/10/2024	3,620	444	2,110
Background Concentration x1.25		4150	723	1,650

**Notes:**

1. **Bold** values exceed the ECMC limit(s)
2. Blue highlighted groundwater analytical values indicate a regulatory exceedance

NA = Not Analyzed, IW = Insufficient Water

ECMC = Energy & Carbon Management Commission

mg/L = Milligrams per liter



4725 Independence St., Suite 100  
Wheat Ridge, CO 80033

CLIENT: Noble Energy Inc.
LOGGED BY: Emily Lambert
PROJECT MANAGER: Bryce Goldade
DRILLING CONTRACTOR: Tasman
DRILLING EQUIPMENT: Geo Probe 3126GT
DRILL BIT SIZE (INCHES):
DATE STARTED - COMPLETED: 10/24/2025 - 10/24/2025
TOTAL BORING DEPTH (FT BGS): 13
DEPTH TO WATER (FT BGS): 5

Hanscome K11-1	
WELL ID: BH01	
LOCATION: Source - FS01	
LATITUDE (NAD 83): 40.328817	
LONGITUDE (NAD 83): -104.637693	
WELL DEPTH: 13	

Depth (feet)	Drilling Method	Water	Lithologic Description	USCS	PID (ppm)	Lab	Recovery %	Well Construction	Depth (ft)	
0.00-1.00	Direct Push		Light Brown, well-graded sand with gravel, fine, medium and coarse sand, coarse gravel, loose, dry, no odour, no staining.	SW	0.0			0.00-1.00, Bentonite	0.00-1.00	
1.00-3.00			Dark Brown, sandy lean clay with gravel, medium plasticity, soft, moist, no odour, no staining.	CL	0.0	BH01@2-3'	Recovery %: 60	0.00-2.00, 50mm PVC Solid	1.00-3.00	
3.00-5.00			No Recovery.	NR	0.0					
5.00-6.00			Black, sandy lean clay with gravel, low plasticity, soft, moderate hydrocarbon odour, moderate staining.	CL	11.6	BH01@5-6'				
6.00-8.00			Grey, silty clay, low plasticity, soft, wet, slight hydrocarbon odour, minor staining.	CL-ML	1.6					
8.00-10.00			No Recovery.	NR	0.5		Recovery %: 60	1.00-13.00, Silica Sand	2.00-13.00, 50mm PVC Slotted	
10.00-12.00			Grey, clayey sand, fine sand, medium dense, wet, no odour, minor.	SC	0.0					
12.00-13.00			Orange, clayey sand, fine sand, medium dense, wet, iron staining, no odour, minor.	SC	0.0	BH01@12-13'	Recovery %: 100			
			BH01 Terminated at 13 Ft							



4725 Independence St., Suite 100  
Wheat Ridge, CO 80033

CLIENT: Noble Energy Inc.
LOGGED BY: Emily Lambert
PROJECT MANAGER: Bryce Goldade
DRILLING CONTRACTOR: Tasman
DRILLING EQUIPMENT: Geo Probe 3126GT
DRILL BIT SIZE (INCHES): 3.25
DATE STARTED - COMPLETED: 10/24/2025 - 10/24/2025
TOTAL BORING DEPTH (FT BGS): 13
DEPTH TO WATER (FT BGS): 6

Hanscome K11-1	
WELL ID: BH02	
LOCATION: North of BH01	
LATITUDE (NAD 83): 40.328551	
LONGITUDE (NAD 83): -104.637587	
WELL DEPTH: 13	

Depth (feet)	Drilling Method	Water	Lithologic Description	USCS	PID (ppm)	Lab	Recovery %	Well Construction	Depth (ft)
0.00-1.00	Direct Push		Brown, well-graded sand with gravel, fine, medium and coarse sand, coarse gravel, dense, moist, no odour, no staining.	SW	0.0	BH02@2-3'	Recovery %: 60	0.00-1.00, Bentonite	0.00-1.00
1.00-3.00			Dark Brown, fat clay, high plasticity, stiff, moist, no odour, no staining.	OH	0.0			0.00-2.00, 50mm PVC Solid	1.00-3.00
3.00-5.00			No Recovery.	NR	0.0	BH02@5-6'	Recovery %: 80	1.00-13.00, Silica Sand 2.00-13.00, 50mm PVC Slotted	3.00-5.00
5.00-6.00			Grey, silty clay, low plasticity, stiff, moist, no odour, no staining.	CL-ML	0.0				5.00-6.00
6.00-8.00			Tan, lean clay, low plasticity, soft, wet, no odour, no staining.	OL	0.0				6.00-8.00
8.00-9.00			Tan, silty sand, fine sand, dense, wet, minor iron staining, no odour.	SM	0.0	BH02@12-13'	Recovery %: 100		8.00-9.00
9.00-10.00			No Recovery.	NR	0.0				9.00-10.00
10.00-13.00				Tan & Orange, well-graded sand, fine, medium and coarse sand, medium dense, wet, iron staining, no odour, minor.	SW	0.0			10.00-13.00

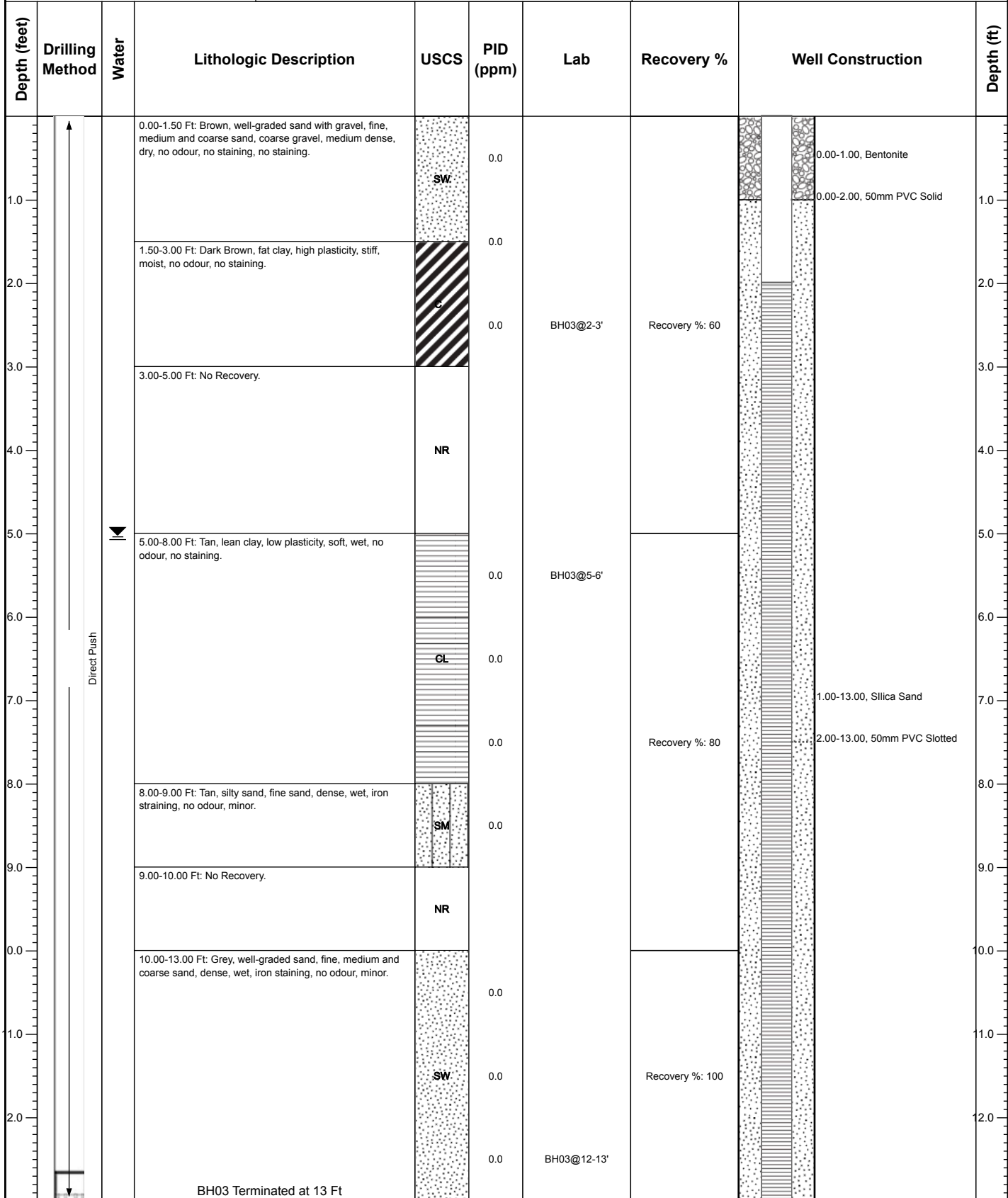
BH02 Terminated at 13 Ft



4725 Independence St., Suite 100  
Wheat Ridge, CO 80033

CLIENT: Noble Energy Inc.
LOGGED BY: Emily Lambert
PROJECT MANAGER: Bryce Goldade
DRILLING CONTRACTOR: Tasman
DRILLING EQUIPMENT: Geo Probe 3126GT
DRILL BIT SIZE (INCHES): 3.25
DATE STARTED - COMPLETED: 10/24/2025 - 10/24/2025
TOTAL BORING DEPTH (FT BGS): 13
DEPTH TO WATER (FT BGS): 5

Hanscome K11-1	
WELL ID: BH03	
LOCATION: East of BH01	
LATITUDE (NAD 83): 40.328551	
LONGITUDE (NAD 83): -104.637587	
WELL DEPTH: 13	

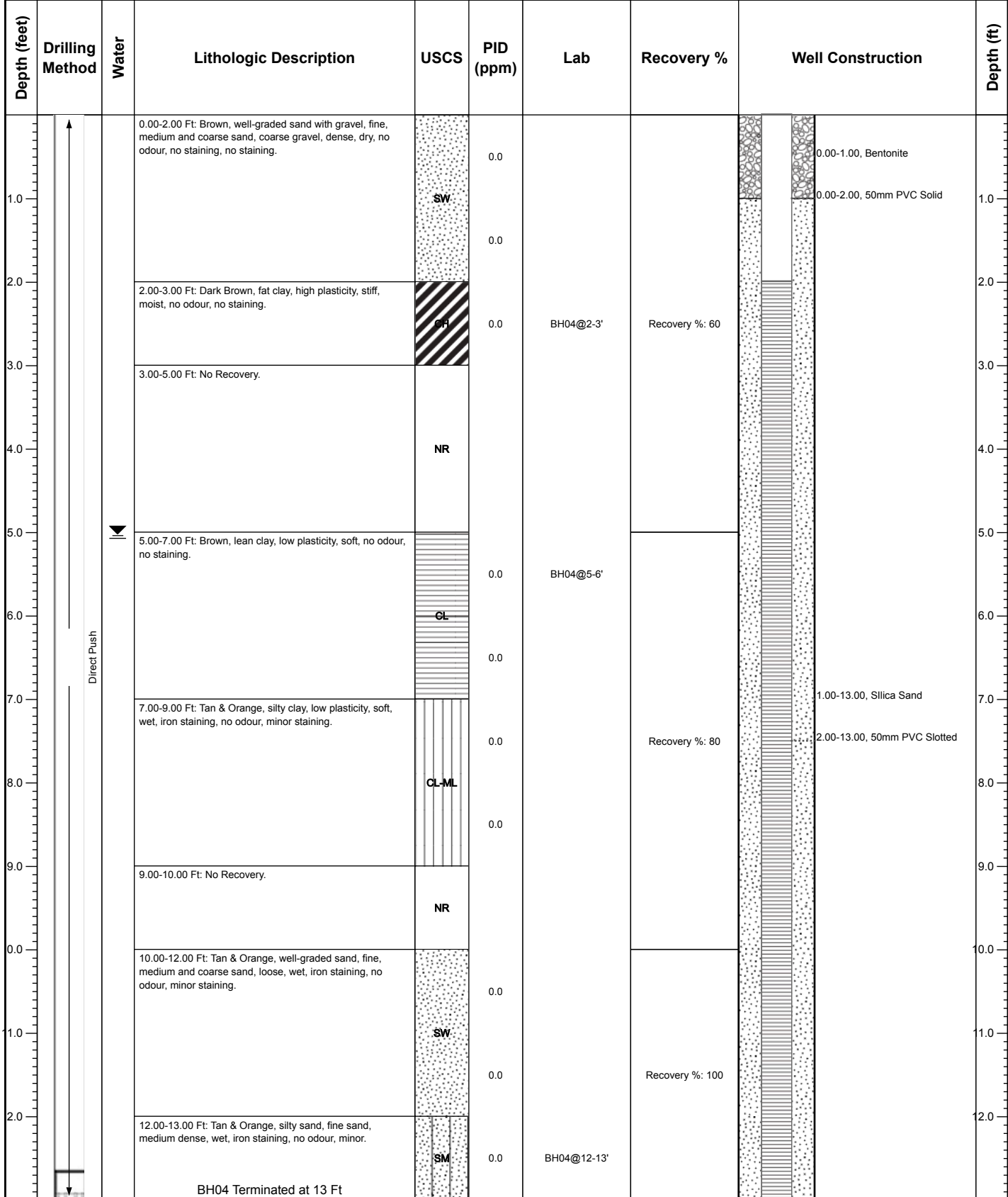




4725 Independence St., Suite 100  
Wheat Ridge, CO 80033

CLIENT: Noble Energy Inc.
LOGGED BY: Emily Lambert
PROJECT MANAGER: Emily Lambert
DRILLING CONTRACTOR: Tasman
DRILLING EQUIPMENT: Geo Probe 3126GT
DRILL BIT SIZE (INCHES): 3.25
DATE STARTED - COMPLETED: 10/24/2025 - 10/24/2025
TOTAL BORING DEPTH (FT BGS): 13
DEPTH TO WATER (FT BGS): 5

Hanscome K11-1	
WELL ID: BH04	
LOCATION: South of BH01	
LATITUDE (NAD 83): 40.328551	
LONGITUDE (NAD 83): -104.637587	
WELL DEPTH: 13	





4725 Independence St., Suite 100  
Wheat Ridge, CO 80033

CLIENT: Noble Energy Inc.
LOGGED BY: Emily Lambert
PROJECT MANAGER: Emily Lambert
DRILLING CONTRACTOR: Tasman
DRILLING EQUIPMENT: Geo Probe 3126GT
DRILL BIT SIZE (INCHES): 3.25
DATE STARTED - COMPLETED: 10/24/2025 - 10/24/2025
TOTAL BORING DEPTH (FT BGS): 13
DEPTH TO WATER (FT BGS): 5

Hanscome K11-1	
WELL ID: BH05	LOCATION: West of BH01
LATITUDE (NAD 83): 40.328818	
LONGITUDE (NAD 83): -104.637829	
WELL DEPTH: 13	

Depth (feet)	Drilling Method	Water	Lithologic Description	USCS	PID (ppm)	Lab	Recovery %	Well Construction	Depth (ft)
0.00-3.00	Direct Push	Water	0.00-3.00 Ft: Dark Brown, lean clay, medium plasticity, stiff, moist, no odour, no staining.	CL	1.0	BH05@2-3'	Recovery %: 60	0.00-1.00, Bentonite	0.00-1.00
3.00-5.00			No Recovery.	NR	1.3			0.00-2.00, 50mm PVC Solid	1.00-2.00
5.00-7.00	Direct Push	Water	5.00-7.00 Ft: Tan, clayey sand, fine, medium and coarse sand, loose, wet, no odour, no staining.	SC	0.0	BH05@5-6'	Recovery %: 80	1.00-13.00, Silica Sand	2.00-13.00, 50mm PVC Slotted
7.00-9.00			7.00-9.00 Ft: Tan & Orange, silty sand, fine sand, medium dense, wet, iron staining, no odour, minor.	SM	0.0				
9.00-10.00	Direct Push	Water	9.00-10.00 Ft: No Recovery.	NR	0.0	BH05@12-13'	Recovery %: 100		
10.00-11.00			10.00-11.00 Ft: Light Brown, well-graded sand, fine, medium and coarse sand, medium dense, wet, no odour, no staining, no staining.	SW	0.0				
11.00-13.00	Direct Push	Water	11.00-13.00 Ft: Tan & Orange, poorly graded sand, fine sand, medium dense, wet, iron staining, no odour, minor.	SP	0.0	BH05@12-13'	Recovery %: 100		
BH05 Terminated at 13 Ft					0.0				



4725 Independence St., Suite 100  
Wheat Ridge, CO 80033

CLIENT: Noble Energy Inc.
LOGGED BY: Emily Lambert
PROJECT MANAGER: Bryce Goldade
DRILLING CONTRACTOR: Tasman
DRILLING EQUIPMENT: Geo Probe 3126GT
DRILL BIT SIZE (INCHES): 3.25
DATE STARTED - COMPLETED: 10/24/2025 - 10/24/2025
TOTAL BORING DEPTH (FT BGS): 10
DEPTH TO WATER (FT BGS): 6

Hanscome K11-1	
WELL ID: SB01	
LOCATION: Source - SEP01-DL	
LATITUDE (NAD 83): 40.328551	
LONGITUDE (NAD 83): -104.637587	
ABANDONMENT METHOD: NATIVE	

Depth (ft)	Drilling Method	Water	Lithologic Description	USCS	PID (ppm)	Lab	Recovery %	Depth (feet)	
0.00-1.00	Direct Push		0.00-1.00 Ft: Dark Brown, sandy lean clay with gravel, medium plasticity, moist to dry, no odour, no staining.	CL	0.0			0.00-1.00	
1.00-3.00			1.00-3.00 Ft: Black, sandy lean clay, medium plasticity, moist, strong hydrocarbon odour, hydrocarbon staining throughout.	CL	186.1			1.00-3.00	
3.00-5.00			3.00-5.00 Ft: No Recovery.	NR	381.1	SB01@2-3'	Recovery %: 60	3.00-5.00	
5.00-6.00			5.00-6.00 Ft: Black, lean clay, low plasticity, moist, strong hydrocarbon odour, hydrocarbon staining throughout.	CL	18.5	SB01@5-6'		5.00-6.00	
6.00-7.00			6.00-7.00 Ft: Grey, lean clay, low plasticity, wet, slight hydrocarbon odour, hydrocarbon staining throughout.	CL	0.2			6.00-7.00	
7.00-8.00			7.00-8.00 Ft: Tan, clayey sand, fine sand, dense, wet, no odour, no staining, no staining.	SC	0.0			7.00-8.00	
8.00-9.00			8.00-9.00 Ft: Light Brown, poorly graded sand, fine to medium sand, dense, wet, no odour, no staining, no staining.	SP	0.0	SB01@8-9'		8.00-9.00	
9.00-10.00			9.00-10.00 Ft: No Recovery.	NR				9.00-10.00	
SB01 Terminated at 10 Ft									



4725 Independence St., Suite 100  
Wheat Ridge, CO 80033

CLIENT: Noble Energy Inc.
LOGGED BY: Emily Lambert
PROJECT MANAGER: Bryce Goldade
DRILLING CONTRACTOR: Tasman
DRILLING EQUIPMENT: Geo Probe 3126GT
DRILL BIT SIZE (INCHES): 3.25
DATE STARTED - COMPLETED: 10/24/2025 - 10/24/2025
TOTAL BORING DEPTH (FT BGS): 10
DEPTH TO WATER (FT BGS): 6

Hanscome K11-1	
WELL ID: SB02	LOCATION: North of SB01
LATITUDE (NAD 83): 40.328551	LONGITUDE (NAD 83): -104.637587
WELL DEPTH:	

Depth (feet)	Drilling Method	Water	Lithologic Description	USCS	PID (ppm)	Lab	Recovery %	
0.00-1.00	Direct Push		Brown, well-graded sand with gravel, fine, medium and coarse sand, coarse gravel, dense, dry, no odour, no staining, no staining.	SW	0.2			
1.00-3.00			Dark Brown, lean clay, medium plasticity, stiff, moist, no odour, no staining.	CL	0.0			
3.00-5.00			No Recovery.	NR	0.0	SB02@2-3	Recovery %: 60	
5.00-6.00			Dark Grey, lean clay, low to medium plasticity, soft, moist, no odour, no staining.	CL	0.0			
6.00-7.00			Tan, lean clay, low plasticity, wet, no odor, no hydrocarbon staining.	CL	0.0			
7.00-8.00			Orange, poorly graded sand, fine to medium sand, dense, wet, iron staining, no odour, minor.	SP	0.0		Recovery %: 60	
8.00-10.00			No Recovery.	NR				

SB02 Terminated at 10 Ft



4725 Independence St., Suite 100  
Wheat Ridge, CO 80033

CLIENT: Noble Energy Inc.
LOGGED BY: Emily Lambert
PROJECT MANAGER: Bryce Goldade
DRILLING CONTRACTOR: Tasman
DRILLING EQUIPMENT: Geo Probe 3126GT
DRILL BIT SIZE (INCHES): 3.25
DATE STARTED - COMPLETED: 10/24/2025 - 10/24/2025
TOTAL BORING DEPTH (FT BGS): 10
DEPTH TO WATER (FT BGS): 6

Hanscome K11-1	
WELL ID: SB03	LOCATION: East of SB01
LATITUDE (NAD 83): 40.328559	LONGITUDE (NAD 83): -104.637543
WELL DEPTH:	

Depth (feet)	Drilling Method	Water	Lithologic Description	USCS	PID (ppm)	Lab	Recovery %	
0.00-1.00	Direct Push		0.00-1.00 Ft: Brown, well-graded sand with gravel, fine, medium and coarse sand, coarse gravel, dense, dry, no odour, no staining, no staining.	SW	0.0			
1.00-4.00			1.00-4.00 Ft: Dark Brown, lean clay, medium plasticity, stiff, moist, no odour, no staining.	CL	0.0			
4.00-5.00			4.00-5.00 Ft: No Recovery.	NR	0.0	SB03@2-3'	Recovery %: 80	
5.00-6.00			5.00-6.00 Ft: Black, lean clay, low plasticity, soft, moist, no odour, no staining.	CL	0.0			
6.00-7.00			6.00-7.00 Ft: Tan, lean clay, low plasticity, soft, wet, no odour, no staining.	CL	0.0			
7.00-9.00			7.00-9.00 Ft: Grey & Orange, poorly graded sand, fine to medium sand, dense, wet, iron staining, no odour, minor.	SP	0.0		Recovery %: 80	
9.00-10.00			9.00-10.00 Ft: No Recovery.	NR	0.0			

SB03 Terminated at 10 Ft



4725 Independence St., Suite 100  
Wheat Ridge, CO 80033

CLIENT: Noble Energy Inc.
LOGGED BY: Emily Lambert
PROJECT MANAGER: Bryce Goldade
DRILLING CONTRACTOR: Tasman
DRILLING EQUIPMENT: Geo Probe 3126GT
DRILL BIT SIZE (INCHES): 3.25
DATE STARTED - COMPLETED: 10/24/2025 - 10/24/2025
TOTAL BORING DEPTH (FT BGS): 10
DEPTH TO WATER (FT BGS): 6

Hanscome K11-1	
WELL ID: SB04	
LOCATION: South of SB01	
LATITUDE (NAD 83): 40.328551	
LONGITUDE (NAD 83): -104.637587	
WELL DEPTH:	

Depth (ft)	Drilling Method	Water	Lithologic Description	USCS	PID (ppm)	Lab	Recovery %	Depth (feet)
0.00-1.00	Direct Push		Brown, well-graded sand with gravel, fine, medium and coarse sand, coarse gravel, medium dense, moist, no odour, no staining, no staining.	SW	0.0			0.00-1.00
1.00-3.00			Dark Brown, lean clay, medium plasticity, stiff, moist, no odour, no staining.	CL	0.0			1.00-3.00
3.00-5.00			No Recovery.	NR	0.0	SB04@2-3'	Recovery %: 60	3.00-5.00
5.00-6.00			Black, lean clay, low plasticity, soft, moist, no odour, no staining.	CL	1.1			5.00-6.00
6.00-7.00			Tan, lean clay, low plasticity, wet, no odour, no hydrocarbon staining.	CL	0.0			6.00-7.00
7.00-10.00			Grey & Orange, poorly graded sand, fine to medium sand, compact, wet, iron staining, no odour, minor staining.	SP	0.0		Recovery %: 60	7.00-10.00
SB04 Terminated at 10 Ft								



4725 Independence St., Suite 100  
Wheat Ridge, CO 80033

CLIENT: Noble Energy Inc.
LOGGED BY: Emily Lambert
PROJECT MANAGER: Bryce Goldade
DRILLING CONTRACTOR: Tasman
DRILLING EQUIPMENT: Geo Probe 3126GT
DRILL BIT SIZE (INCHES): 3.25
DATE STARTED - COMPLETED: 10/24/2025 - 10/24/2025
TOTAL BORING DEPTH (FT BGS): 10
DEPTH TO WATER (FT BGS): 6

Hanscome K11-1	
WELL ID: SB05	
LOCATION: West of SB01	
LATITUDE (NAD 83): 40.328568	
LONGITUDE (NAD 83): -104.637640	
WELL DEPTH:	

Depth (ft)	Drilling Method	Water	Lithologic Description	USCS	PID (ppm)	Lab	Recovery %	Depth (feet)	
0.0	Direct Push		0.00-1.50 Ft: Brown, well-graded sand with gravel, fine, medium and coarse sand, coarse gravel, dense, dry, no odour, no staining, no staining.	SW	0.0			0.0	
1.5			1.50-3.00 Ft: Black, sandy lean clay with gravel, medium plasticity, soft, moist, hc staining, strong hydrocarbon odour, moderate staining.	CL	4.0			1.5	
3.0			3.00-5.00 Ft: No Recovery.	NR	41.9	SB05@2-3	Recovery %: 60	3.0	
5.0			5.00-6.00 Ft: Black, sandy fat clay with gravel, high plasticity, soft, moist, hc staining, moderate hydrocarbon odour, moderate staining.	OH	23.3			5.0	
6.0			6.00-8.00 Ft: Grey & Orange, silty sand, fine sand, dense, wet, iron staining, no odour, minor.	SM	1.3			6.0	
7.0						0.0	SB05@7-8'	Recovery %: 60	7.0
8.0				8.00-10.00 Ft: No Recovery.	NR				8.0
9.0									9.0

SB05 Terminated at 10 Ft



4725 Independence St., Suite 100  
Wheat Ridge, CO 80033

CLIENT: Noble Energy Inc.
LOGGED BY: Jack Smith
PROJECT MANAGER: Bryce Goldade
DRILLING CONTRACTOR: Tasman
DRILLING EQUIPMENT: Hand Auger
DRILL BIT SIZE (INCHES): 3.25
DATE STARTED - COMPLETED: 10/29/2025 - 10/29/2025
TOTAL BORING DEPTH (FT BGS): 3
DEPTH TO WATER (FT BGS): 3

Hanscome K11-1	
WELL ID: BKG02	LOCATION: Southeast of SB01
LATITUDE (NAD 83): 40.328490	LONGITUDE (NAD 83): -104.637139
ABANDONMENT METHOD: Native Soil	

Depth (feet)	Drilling Method	Water	Lithologic Description	USCS	PID (ppm)	Lab	Recovery %
0.00-3.00	Hand Auger		0.00-3.00 Ft: Brown, lean clay, medium plasticity, cohesive, moist, no odour, no hydrocarbon staining.	CL	0.1	BKG02@0-0.5'	Recovery %: 100
1.0					0.1		
2.0					0.1	BKG02@1-2'	
					0.0	BKG02@2-3'	
BKG02 Terminated at 3 Ft							



4725 Independence St., Suite 100  
Wheat Ridge, CO 80033

CLIENT: Noble Energy Inc.
LOGGED BY: Jack Smithe
PROJECT MANAGER: Bryce Goldade
DRILLING CONTRACTOR: Tasman
DRILLING EQUIPMENT: Hand Auger
DRILL BIT SIZE (INCHES): 3.25
DATE STARTED - COMPLETED: 10/29/2025 - 10/29/2025
TOTAL BORING DEPTH (FT BGS): 3
DEPTH TO WATER (FT BGS): 3

Hanscome K11-1	
WELL ID: BKG03	
LOCATION: Southwest of SB01	
LATITUDE (NAD 83): 40.328485	
LONGITUDE (NAD 83): -104.637884	
ABANDONMENT METHOD: Native Soil	

Depth (feet)	Drilling Method	Water	Lithologic Description	USCS	PID (ppm)	Lab	Recovery %
0.00-3.00	Hand Auger		0.00-3.00 Ft: Brown, lean clay, medium plasticity, cohesive, moist, no odour, no hydrocarbon staining.	CL	0.0	BKG03@0-0.5'	
1.0					0.0		
2.0						0.1	BKG03@1-2'
					0.3	BKG03@2-3'	
BKG03 Terminated at 3 Ft							



4725 Independence St., Suite 100  
Wheat Ridge, CO 80033

CLIENT: Noble Energy Inc.
LOGGED BY: Jack Smithe
PROJECT MANAGER: Bryce Goldade
DRILLING CONTRACTOR: Tasman
DRILLING EQUIPMENT: Hand Auger
DRILL BIT SIZE (INCHES): 3.25
DATE STARTED - COMPLETED: 10/29/2025 - 10/29/2025
TOTAL BORING DEPTH (FT BGS): 3
DEPTH TO WATER (FT BGS): 3

Hanscome K11-1	
WELL ID: BKG04	LOCATION: Northwest of BH01
LATITUDE (NAD 83): 40.328959	LONGITUDE (NAD 83): -104.638018
ABANDONMENT METHOD: Native Soil	

Depth (feet)	Drilling Method	Water	Lithologic Description	USCS	PID (ppm)	Lab	Recovery %
0.00-3.00	Hand Auger		Brown, lean clay, medium plasticity, cohesive, moist, no odour, no hydrocarbon staining.	CL	0.0	BKG04@0-0.5'	
1.0					0.0		
2.0					0.0	BKG04@1-2'	Recovery %: 100
					0.0	BKG04@2-3'	
BKG04 Terminated at 3 Ft							



4725 Independence St., Suite 100  
Wheat Ridge, CO 80033

CLIENT: Noble Energy Inc.
LOGGED BY: Jack Smithe
PROJECT MANAGER: Bryce Goldade
DRILLING CONTRACTOR: Tasman
DRILLING EQUIPMENT: Hand Auger
DRILL BIT SIZE (INCHES): 3.25
DATE STARTED - COMPLETED: 10/29/2025 - 10/29/2025
TOTAL BORING DEPTH (FT BGS): 3
DEPTH TO WATER (FT BGS): 3

Hanscome K11-1	
WELL ID: BKG05	LOCATION: Northeast of BH01
LATITUDE (NAD 83): 40.328930	LONGITUDE (NAD 83): -104.637182
ABANDONMENT METHOD: Native Soil	

Depth (feet)	Drilling Method	Water	Lithologic Description	USCS	PID (ppm)	Lab	Recovery %
0.00-3.00	Hand Auger		0.00-3.00 Ft: Brown, lean clay, medium plasticity, cohesive, moist, no odour, no hydrocarbon staining.	CL	0.1	BKG05@0-0.5'	
1.0					0.0		
2.0						0.0	BKG05@1-2'
					0.0	BKG05@2-3'	
BKG05 Terminated at 3 Ft							



4725 Independence St., Suite 100  
Wheat Ridge, CO 80033

CLIENT: Noble Energy Inc.
LOGGED BY: Jack Smithe
PROJECT MANAGER: Bryce Goldade
DRILLING CONTRACTOR: Tasman
DRILLING EQUIPMENT: Hand Auger
DRILL BIT SIZE (INCHES): 3.25
DATE STARTED - COMPLETED: 10/29/2025 - 10/29/2025
TOTAL BORING DEPTH (FT BGS): 3
DEPTH TO WATER (FT BGS): 3

Hanscome K11-1	
WELL ID: BKG06	LOCATION: East of BH01
LATITUDE (NAD 83): 40.328829	LONGITUDE (NAD 83): -104.637074
ABANDONMENT METHOD: Native Soil	

Depth (feet)	Drilling Method	Water	Lithologic Description	USCS	PID (ppm)	Lab	Recovery %
0.00-3.00	Hand Auger		Brown, lean clay, medium plasticity, cohesive, moist, no odour, no hydrocarbon staining.	CL	0.0	BKG06@0-0.5'	
1.0					0.0		
2.0					0.0	BKG06@1-2'	Recovery %: 100
					0.0	BKG06@2-3'	
BKG06 Terminated at 3 Ft							