



Noble Energy, Inc.
Fourth Quarter 2025 Groundwater Monitoring Summary

December 15, 2025
Hanscome K11-1 Tank Battery
SWNW Section 11 T4N R65W
Remediation # 34167

This groundwater monitoring summary has been prepared by Tasman, Inc. for the former Hanscome K11-1 Tank Battery location.

Site History and Background

On April 29, 2024, historical releases were discovered beneath the former separator dumpline and the groundwater sample (GW01) collected from the former produced water vessel, following the receipt of analytical results from confirmation soil sampling activities. On October 24, 2025, supplemental site investigation activities were conducted to delineate organic impacts recorded during decommissioning. Five groundwater monitoring wells (BH01 – BH05) were installed to confirm and delineate the dissolved-phase hydrocarbon impacts observed in groundwater sample GW01. Additional site investigation activities will be conducted to further delineate the organic compound exceedances in soil surrounding the former separator.

Groundwater Monitoring Activities

On November 5, 2025, groundwater monitoring was conducted at the five (5) site monitoring wells (BH01 –BH05). Five groundwater samples were submitted to SGS laboratories for analysis of benzene, toluene, ethylbenzene, total xylenes (BTEX), naphthalene, 1,2,4-trimethylbenzene (TMB), and 1,3,5-TMB by EPA Method 8260B, chloride and sulfate anions by EPA Method 300.0, and total dissolved solids (TDS) by Method SM 2540C.

Fourth quarter 2025 analytical results indicated that organic compound concentrations were in compliance with the applicable ECMC Table 915-1 regulatory standards in all monitoring well locations. Additionally, chloride & sulfate anion and TDS concentrations were in compliance with the applicable regulatory standards or within 1.25x the background concentrations of the cross-gradient monitoring wells (BH03 and BH04) in all sampled monitoring well locations. Sample locations and corresponding analytical results are illustrated on Figures 1 and 2. Groundwater elevation data is illustrated on Figure 3. Groundwater analytical results are summarized in Tables 1 and 2.

Current Remediation Activities and Path Forward

Monitored natural attenuation (MNA) was selected as the remediation strategy for this site during the fourth quarter 2025 and will remain the selected remediation strategy through the first quarter 2026.

First quarter 2026 groundwater sampling will be conducted in February 2026.

BH02	
Compound (µg/L)	11/5/2025
Benzene	<1.0
Toluene	<1.0
Ethylbenzene	<1.0
Total Xylenes	<1.0
Naphthalene	<4.0
1,2,4-TMB	<1.0
1,3,5-TMB	<1.0
Depth to Water (ft. bgs)	2.84




BH01	
Compound (µg/L)	11/5/2025
Benzene	<1.0
Toluene	<1.0
Ethylbenzene	<1.0
Total Xylenes	<1.0
Naphthalene	<4.0
1,2,4-TMB	<1.0
1,3,5-TMB	<1.0
Depth to Water (ft. bgs)	2.97

BH03	
Compound (µg/L)	11/5/2025
Benzene	<1.0
Toluene	<1.0
Ethylbenzene	<1.0
Total Xylenes	<1.0
Naphthalene	<4.0
1,2,4-TMB	<1.0
1,3,5-TMB	<1.0
Depth to Water (ft. bgs)	2.42

BH05	
Compound (µg/L)	11/5/2025
Benzene	<1.0
Toluene	<1.0
Ethylbenzene	<1.0
Total Xylenes	<1.0
Naphthalene	<4.0
1,2,4-TMB	<1.0
1,3,5-TMB	<1.0
Depth to Water (ft. bgs)	1.22

BH04	
Compound (µg/L)	11/5/2025
Benzene	<1.0
Toluene	<1.0
Ethylbenzene	<1.0
Total Xylenes	<1.0
Naphthalene	<4.0
1,2,4-TMB	<1.0
1,3,5-TMB	<1.0
Depth to Water (ft. bgs)	2.36

Legend

-  Completed Soil Boring/Monitoring Well Location
-  Groundwater Flow Direction (4Q25)
-  Excavation Extent (Collected via Trimble GPS)

Notes

- 1) All locations are approximate unless otherwise noted.
- 2) Buried infrastructure has been spatially projected.

GPS – Global Positioning System
µg/L – Micrograms per liter

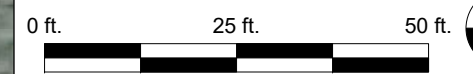


Image Source: Google Earth; Google 2020

DATE:	10/29/2025
DESIGNED BY:	JW
DRAWN BY:	JS

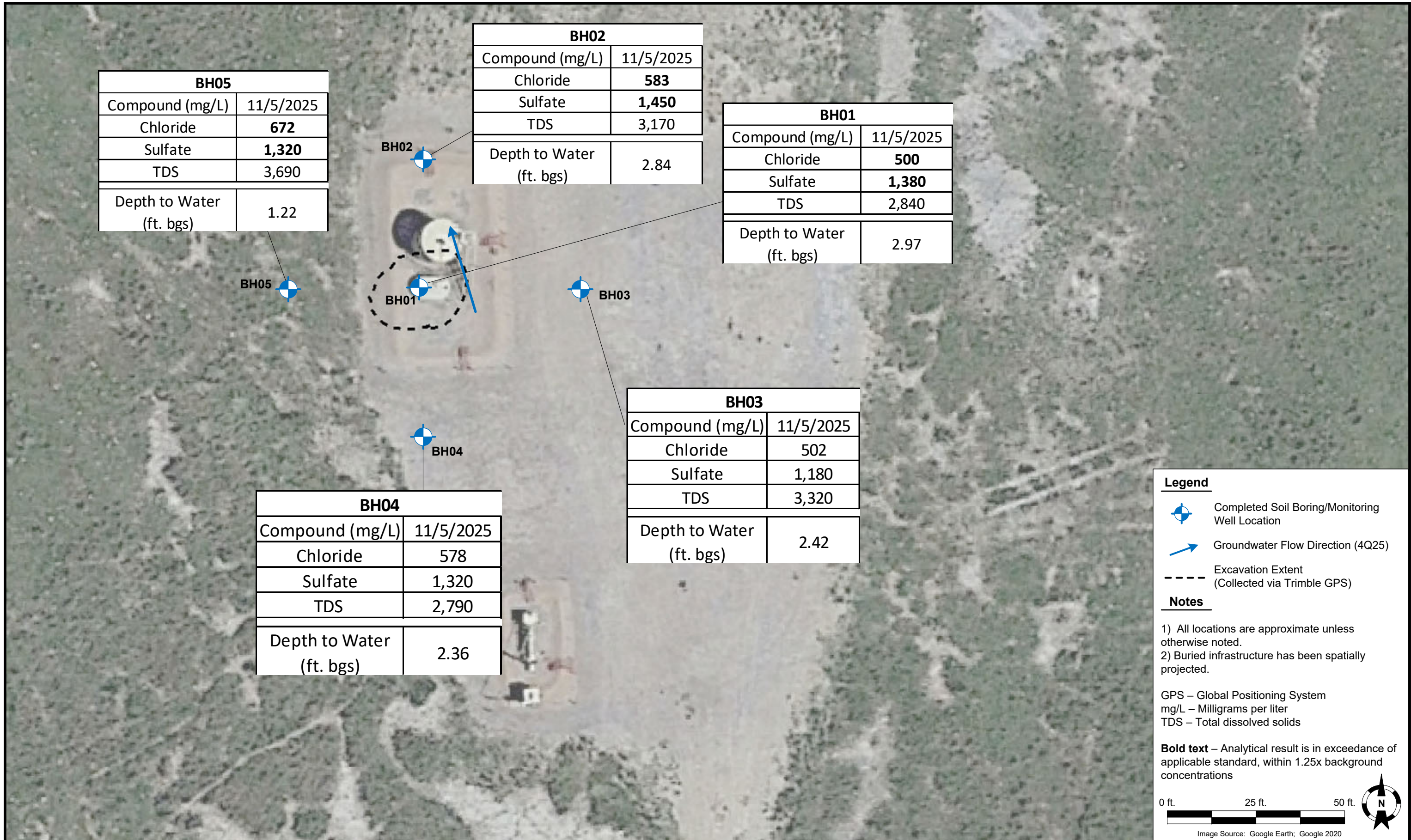


Tasman, Inc.
4725 N Independence St
Wheat Ridge, CO 80033

Noble Energy, Inc. (100322) – DJ Basin
Hanscome K11-1
SWNW, Section 11, Township 4 North, Range 65 West
Weld County, Colorado

GROUNDWATER
ANALYTICAL RESULTS
MAP
(ORGANIC PARAMETERS)

FIGURE
1



BH05	
Compound (mg/L)	11/5/2025
Chloride	672
Sulfate	1,320
TDS	3,690
Depth to Water (ft. bgs)	1.22



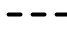
BH02	
Compound (mg/L)	11/5/2025
Chloride	583
Sulfate	1,450
TDS	3,170
Depth to Water (ft. bgs)	2.84

BH01	
Compound (mg/L)	11/5/2025
Chloride	500
Sulfate	1,380
TDS	2,840
Depth to Water (ft. bgs)	2.97

BH03	
Compound (mg/L)	11/5/2025
Chloride	502
Sulfate	1,180
TDS	3,320
Depth to Water (ft. bgs)	2.42

BH04	
Compound (mg/L)	11/5/2025
Chloride	578
Sulfate	1,320
TDS	2,790
Depth to Water (ft. bgs)	2.36

Legend

-  Completed Soil Boring/Monitoring Well Location
-  Groundwater Flow Direction (4Q25)
-  Excavation Extent (Collected via Trimble GPS)

Notes

- 1) All locations are approximate unless otherwise noted.
- 2) Buried infrastructure has been spatially projected.

GPS – Global Positioning System
 mg/L – Milligrams per liter
 TDS – Total dissolved solids

Bold text – Analytical result is in exceedance of applicable standard, within 1.25x background concentrations

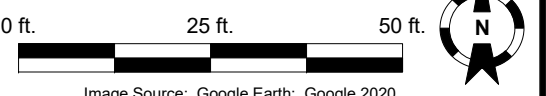


Image Source: Google Earth; Google 2020

DATE:	10/29/2025
DESIGNED BY:	JW
DRAWN BY:	JS

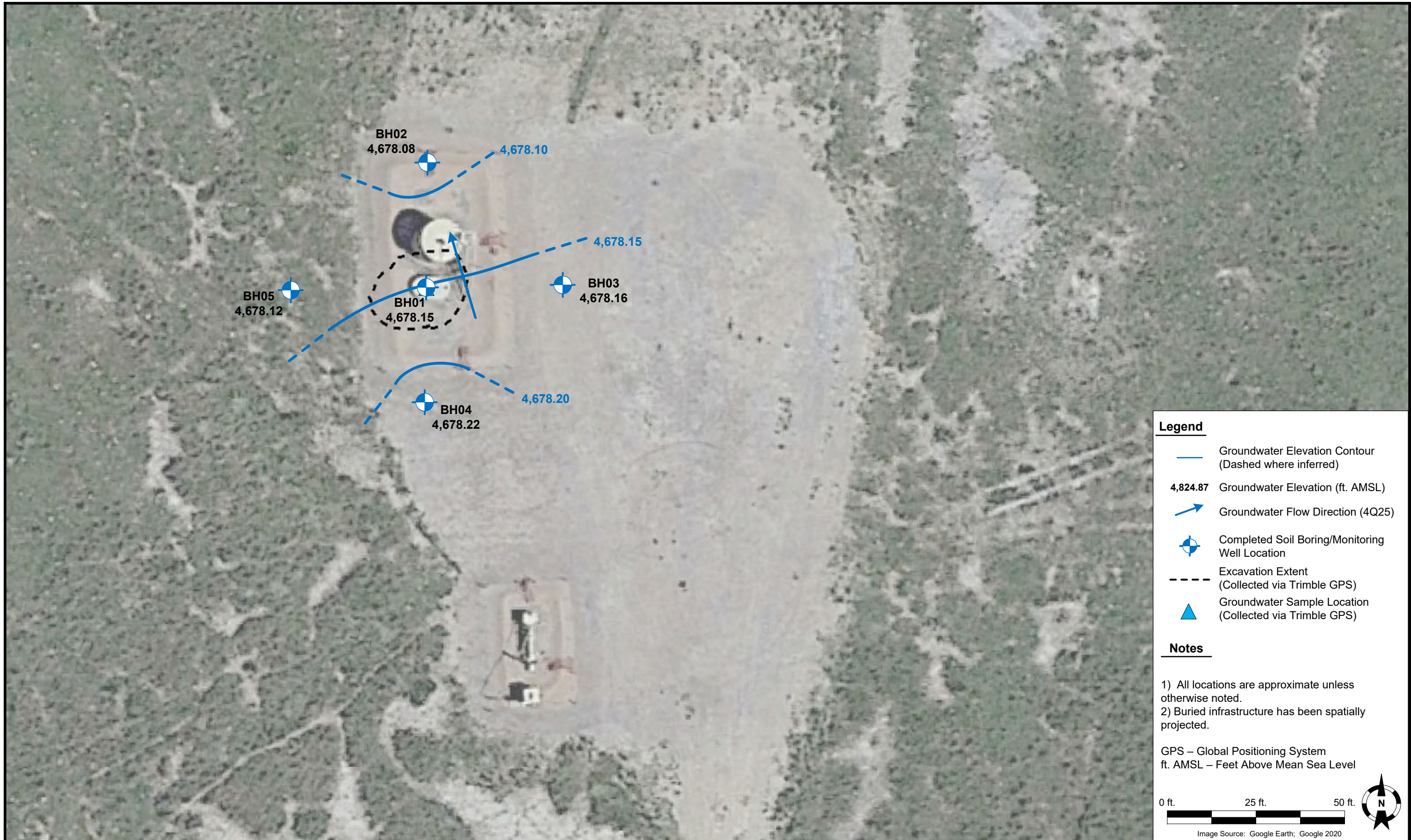


Tasman, Inc.
 4725 N Independence St
 Wheat Ridge, CO 80033

Noble Energy, Inc. (100322) – DJ Basin
Hanscome K11-1
 SWNW, Section 11, Township 4 North, Range 65 West
 Weld County, Colorado

GROUNDWATER
 ANALYTICAL RESULTS
 MAP
 (INORGANIC PARAMETERS)

FIGURE
 2



Legend

- Groundwater Elevation Contour (Dashed where inferred)
- 4,824.87** Groundwater Elevation (ft. AMSL)
- Groundwater Flow Direction (4Q25)
- Completed Soil Boring/Monitoring Well Location
- Excavation Extent (Collected via Trimble GPS)
- Groundwater Sample Location (Collected via Trimble GPS)

Notes

1) All locations are approximate unless otherwise noted.
 2) Buried infrastructure has been spatially projected.

GPS – Global Positioning System
 ft. AMSL – Feet Above Mean Sea Level



DATE:	December 10, 2025
DESIGNED BY:	JW
DRAWN BY:	J. Woffinden

Tasman, Inc.
 4725 N Independence St
 Wheat Ridge, CO 80033

Noble Energy, Inc. (100322) – DJ Basin
Hanscome K11-1
 SWNW, Section 11, Township 4 North, Range 65 West
 Weld County, Colorado

**GROUNDWATER ELEVATION
 CONTOUR MAP (4Q2025)**

**FIGURE
 3**

TABLE 1
SUMMARY OF GROUNDWATER ORGANIC CHEMISTRY DATA
(NOBLE ENERGY, INC.)
HANSCOME K11-1, WELD COUNTY, COLORADO
REM # 34167

Sample ID	Sample Date	Benzene (µg/L)	Toluene (µg/L)	Ethylbenzene (µg/L)	Xylenes (µg/L)	Naphthalene (µg/L)	1,2,4-TMB (µg/L)	1,3,5-TMB (µg/L)	Depth to Groundwater ⁽²⁾ (ft. bgs)	Groundwater Elevation (ft. AMSL)	LNAPL Thickness (ft.)
ECMC Table 915-1 Limits ⁽¹⁾		5.0	560	700	1,400	140	67	67			
BH01	11/5/2025	<1.0	<1.0	<1.0	<1.0	<4.0	<1.0	<1.0	2.97	4,678.15	-
BH02	11/5/2025	<1.0	<1.0	<1.0	<1.0	<4.0	<1.0	<1.0	2.84	4,678.08	-
BH03	11/5/2025	<1.0	<1.0	<1.0	<1.0	<4.0	<1.0	<1.0	2.42	4,678.16	-
BH04	11/5/2025	<1.0	<1.0	<1.0	<1.0	<4.0	<1.0	<1.0	2.36	4,678.22	-
BH05	11/5/2025	<1.0	<1.0	<1.0	<1.0	<4.0	<1.0	<1.0	1.22	4,678.12	-

Notes:

1. Groundwater standards referenced from 2 CCR 404-1, Table 915-1, January 15, 2021.
2. Depth to water measurements were measured from ground surface for excavation samples. Monitoring well measurements were collected from top of casing and adjusted using survey data to reflect depth of water from ground surface.

TMB = Trimethylbenzene

ECMC = Colorado Energy and Carbon Management Commission

LNAPL = Light Non-Aqueous Phase Liquid

µg/L = Micrograms per liter

(<) = Analytical result is less than the indicated laboratory reporting limit.

ft. = Feet

bgs = below ground surface

AMSL = Above Mean Sea Level

NM = Not measured

ND = Not detected

NA = Constituent not analyzed

Red highlighted groundwater analytical values indicate an exceedance of ECMC Groundwater Standard

Bold faced values exceed the ECMC Table 915-1 limit(s)

TABLE 2
SUMMARY OF GROUNDWATER INORGANIC CHEMISTRY DATA
(NOBLE ENERGY, INC.)
HANSCOME K11-1, WELD COUNTY, COLORADO
REM # 34167

Sample ID	Sample Date	Total Dissolved Solids (mg/L)	Chloride Ion (mg/L)	Sulfate Ion (mg/L)	Depth to Groundwater ⁽²⁾ (ft. bgs)	Groundwater Elevation (ft. AMSL)
ECMC Table 915-1 Limits ⁽¹⁾		<1.25 x local background	250 or <1.25 x local background	250 or <1.25 x local background	-	-
BH01	11/05/25	2,840	510	1,380	2.97	4,678.15
BH02	11/05/25	3,170	583	1,450	2.84	4,678.08
BH03	11/05/25	3,320	502	1,180	2.42	4,678.16
BH04	11/05/25	2,790	578	1,320	2.36	4,678.22
BH05	11/05/25	3,690	672	1,320	1.22	4,678.12
Maximum BKG Concentration x1.25		4,150	723	1,650	-	-

Notes:

- Groundwater standards referenced from 2 CCR 404-1, Table 915-1, January 15, 2021.
- Depth to water measurements were measured from ground surface for excavation samples. Monitoring well measurements were collected from top of casing and adjusted using survey data to reflect depth of water from ground surface.

ECMC = Colorado Energy and Carbon Management Commission

mg/L = Milligrams per liter

(<) = Analytical result is less than the indicated laboratory reporting limit.

ft. = feet

bgs = below ground surface

AMSL = Above Mean Sea Level

NM = Not measured

NA = Constituent not analyzed

BKG = Background

 = Up-gradient and/or cross-gradient well location used for background concentration.

Maximum historic background concentration used to compare to site inorganic parameters

Bold faced values exceed the ECMC Table 915-1 limit(s), but are within 1.25x background concentrations.

Bold faced values exceed the ECMC Table 915-1 limit(s) and greater than 1.25x background concentrations.