






### Map Key

-  Project Location
-  Water Well (Permit #)
-  1.0 Mile Buffer
-  Township Boundaries
-  Section Boundaries



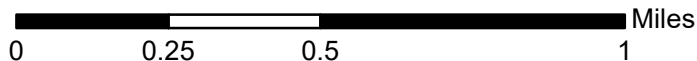
112 High Street  
Buffalo, Wyoming 82834  
855.684.5891

[www.absarokasolutions.com](http://www.absarokasolutions.com)

CIT.CO.

## McCormick 24-3 #6 Release Overview Map

*Cheyenne County, State of Colorado  
SESW, Sec. 3, T14S, R49W*

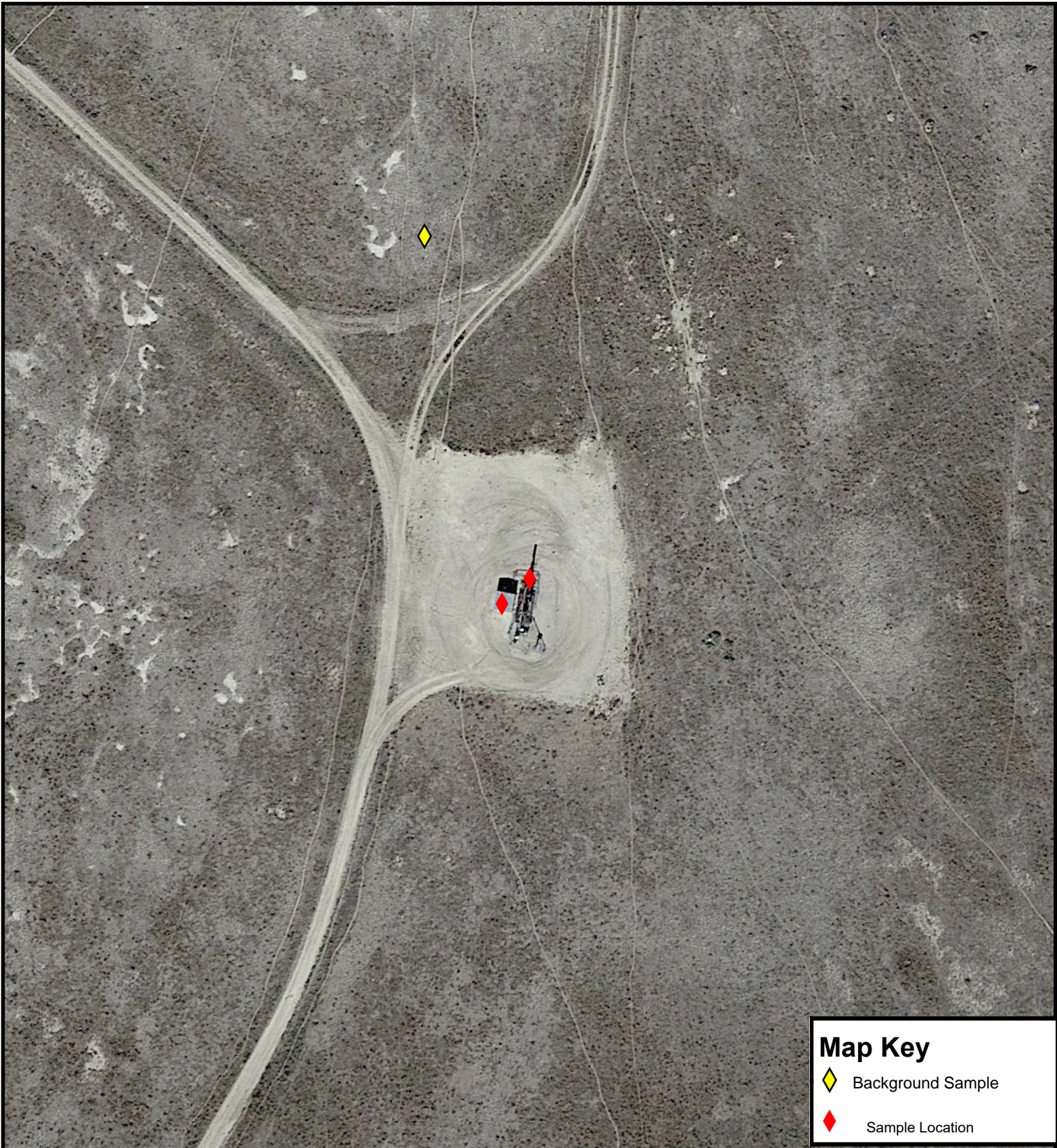


Coordinate System: WGS 1984 UTM Zone 13N





Scale: 1:20,000

Date: 11/6/2024



**Map Key**

-  Background Sample
-  Sample Location



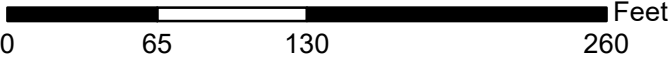

112 High Street  
Buffalo, Wyoming 82834  
855.684.5891

[www.absarokasolutions.com](http://www.absarokasolutions.com)


CIT.CO.1055

**McCormick 24-3 #6 Release  
Site Map**

*Cheyenne County, State of Colorado  
SESW, Sec. 3, T14S, R49W*

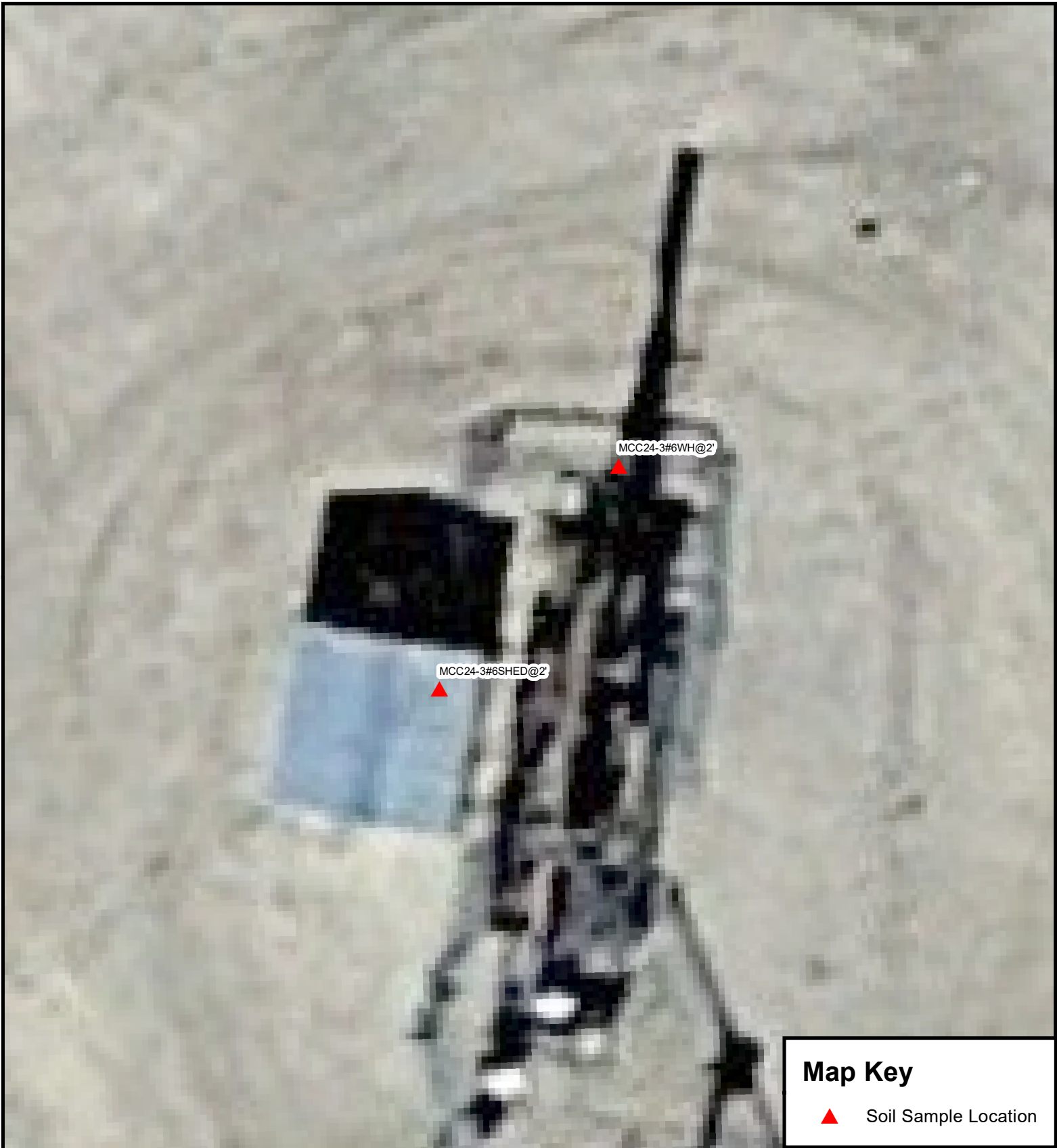


Coordinate System: WGS 1984 UTM Zone 13N



Scale: 1:1,000

Date: 1/28/2025



**Map Key**

▲ Soil Sample Location



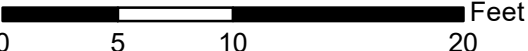

112 High Street  
Buffalo, Wyoming 82834  
855.684.5891

[www.absarokasolutions.com](http://www.absarokasolutions.com)

CIT.CO.1012.01


**McCormick 24-3**  
**November 2024 Sample Map**

*Cheyenne County, State of Colorado*



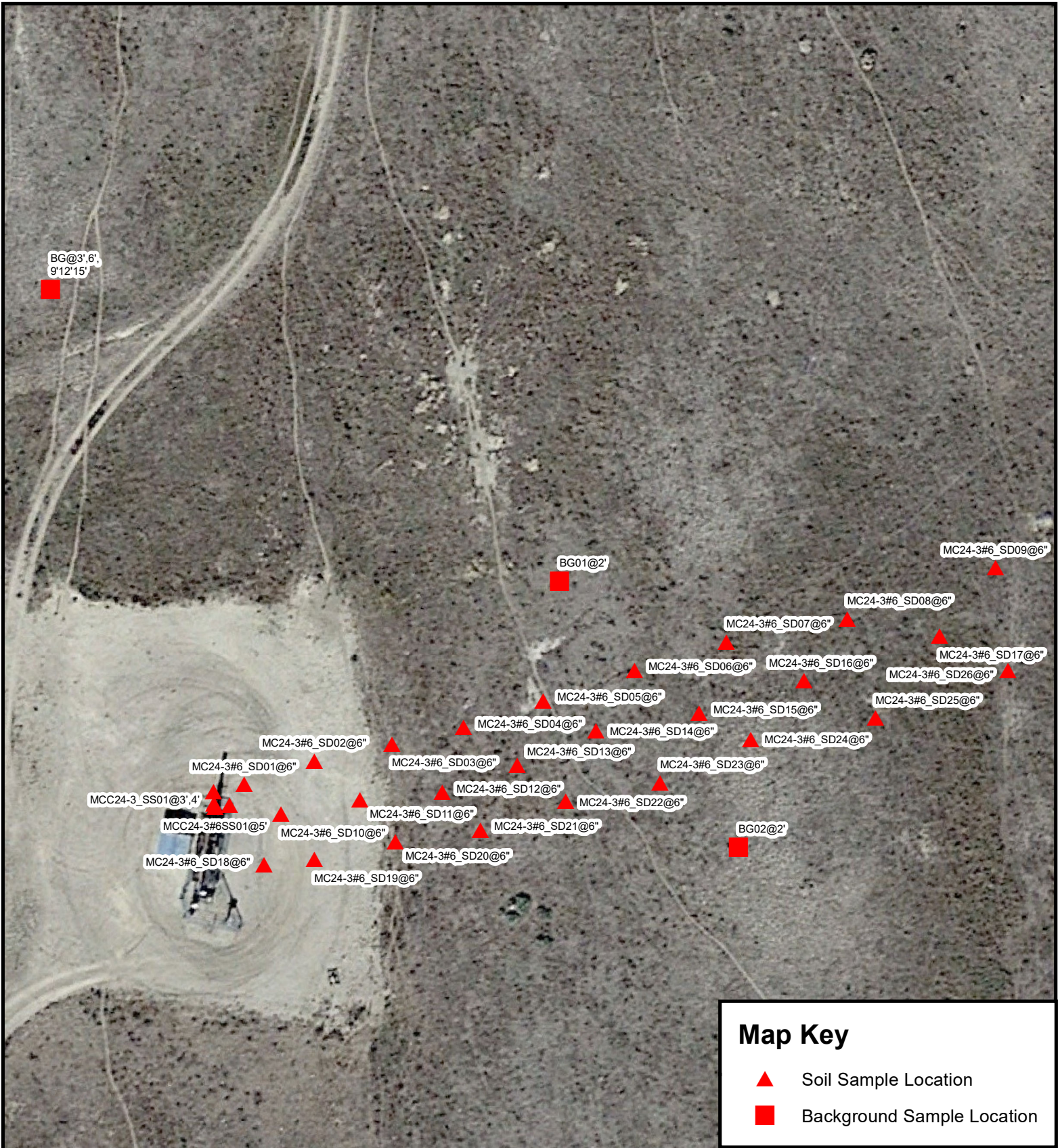
0 5 10 20 Feet

Coordinate System: WGS 1984 UTM Zone 13N



Scale: 1:100

Date: 12/17/2025



**Map Key**

- ▲ Soil Sample Location
- Background Sample Location




112 High Street  
Buffalo, Wyoming 82834  
855.684.5891

[www.absarokasolutions.com](http://www.absarokasolutions.com)

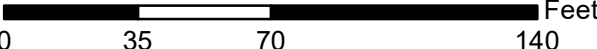
CIT.CO.1012.01

**McCormick 24-3**  
**January 2025 Sample Map**

*Cheyenne County, State of Colorado*




N



0      35      70      140

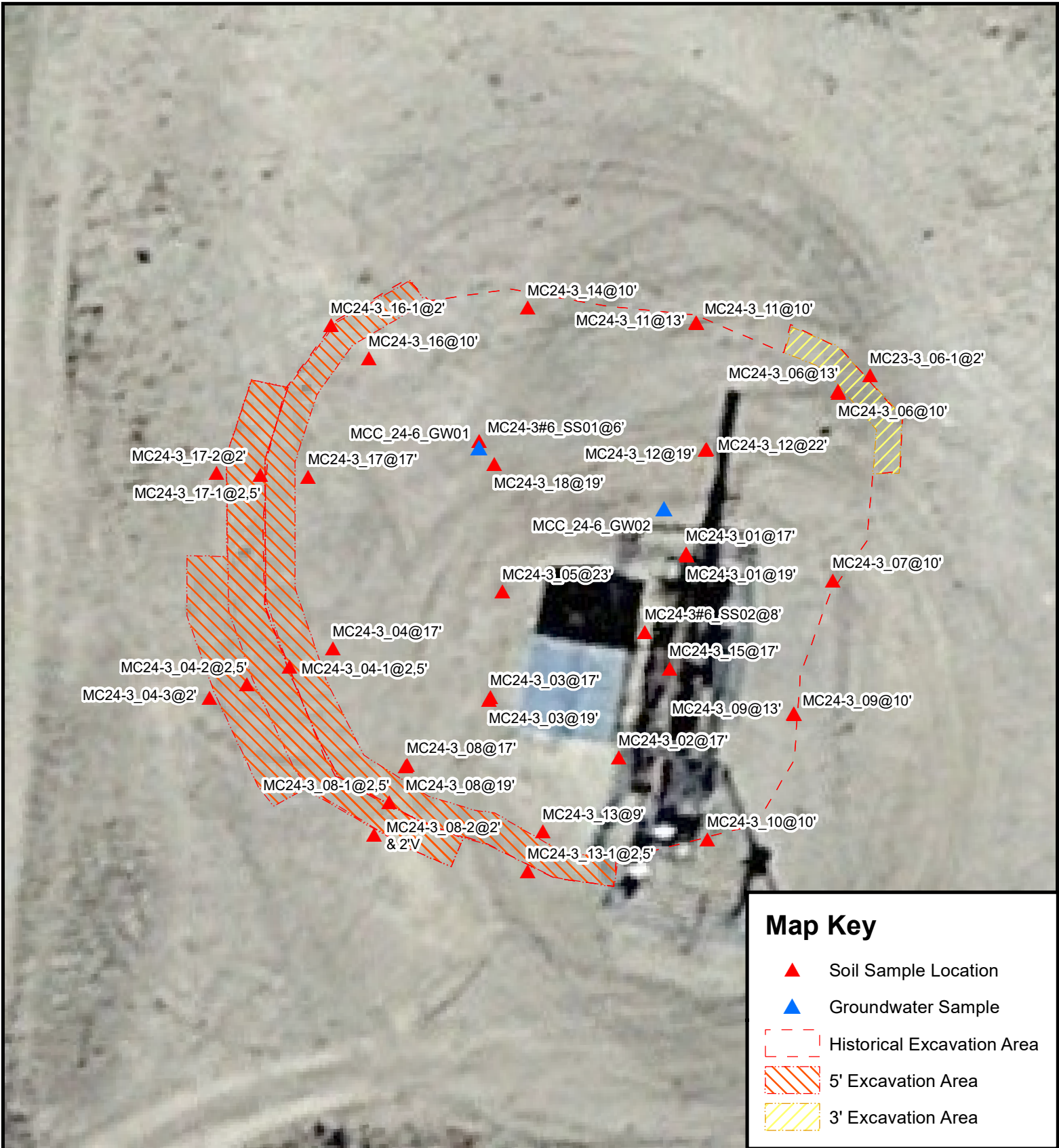
Feet

Coordinate System: WGS 1984 UTM Zone 13N



Scale: 1:606

Date: 12/17/2025



### Map Key

- ▲ Soil Sample Location
- ▲ Groundwater Sample
- Historical Excavation Area
- 5' Excavation Area
- 3' Excavation Area



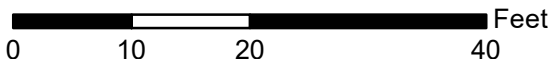
112 High Street  
Buffalo, Wyoming 82834  
855.684.5891

www.absarokasolutions.com

CIT.CO.1012.01

## McCormick 24-3 Soil Sample Sample Map

*Cheyenne County, State of Colorado*

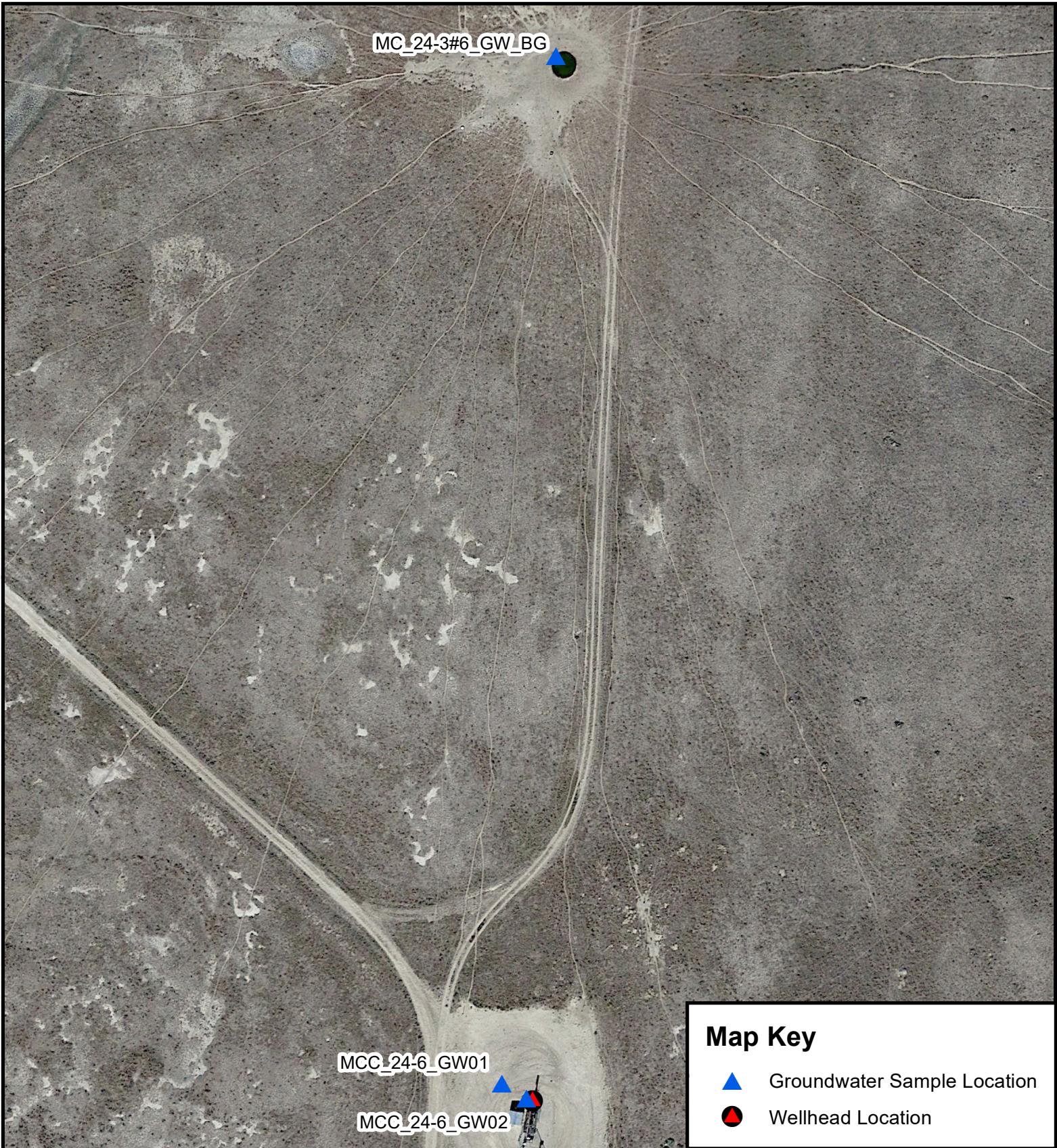


Coordinate System: WGS 1984 UTM Zone 13N





Scale: 1:195

Date: 12/18/2025



**Map Key**

-  Groundwater Sample Location
-  Wellhead Location



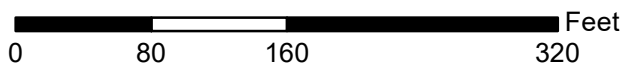
112 High Street  
Buffalo, Wyoming 82834  
855.684.5891

[www.absarokasolutions.com](http://www.absarokasolutions.com)

CIT.CO.1012.01

**McCormick 24-3  
Groundwater Sample Map**

*Cheyenne County, State of Colorado*



Coordinate System: WGS 1984 UTM Zone 13N






Scale: 1:1,360

Date: 12/17/2025



**Map Key**

-  Proposed Monitoring Well Location
-  Approximate Excavation Outline
-  Wellhead Location

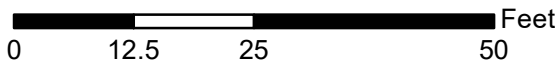


112 High Street  
 Buffalo, Wyoming 82834  
 855.684.5891  
 www.absarokasolutions.com

CIT.CO.1012.01

**McCormick 24-3  
 Proposed Monitoring Well Location Map**

*Cheyenne County, State of Colorado*



Coordinate System: WGS 1984 UTM Zone 13N



Scale: 1:240

Date: 12/18/2025