

Chevron Rockies Business Unit

Field Qualitative Criteria for ECMC Reporting Associated with the Discovery of Potentially Impacted Material

If answered **Yes** to any of the questions listed below, this may suggest the presence of potentially impacted materials as outlined in ECMC Rule 912. Out of an abundance of caution, a “Yes” response will be reported to the ECMC within 24 hours after discovery, regardless of laboratory results. **Immediately notify the RBU Remediation Team.** Include a copy of this Field Qualitative Spill Criteria Checklist in the field Report.

Please answer the following questions when on-site:

1. Is there visible petroleum hydrocarbon staining in the soil?
No
2. Does the soil sample from the stained area have a petroleum odor?
No
3. Is there a petroleum hydrocarbon sheen on the nearby surface water?
No
4. Does there appear to be a sheen of the surface of accumulated groundwater or seeps within the excavation indicative of petroleum?
No
5. Is stained soil in contact with groundwater?
No

Please Include relevant photos of the site conditions for items 1-5.

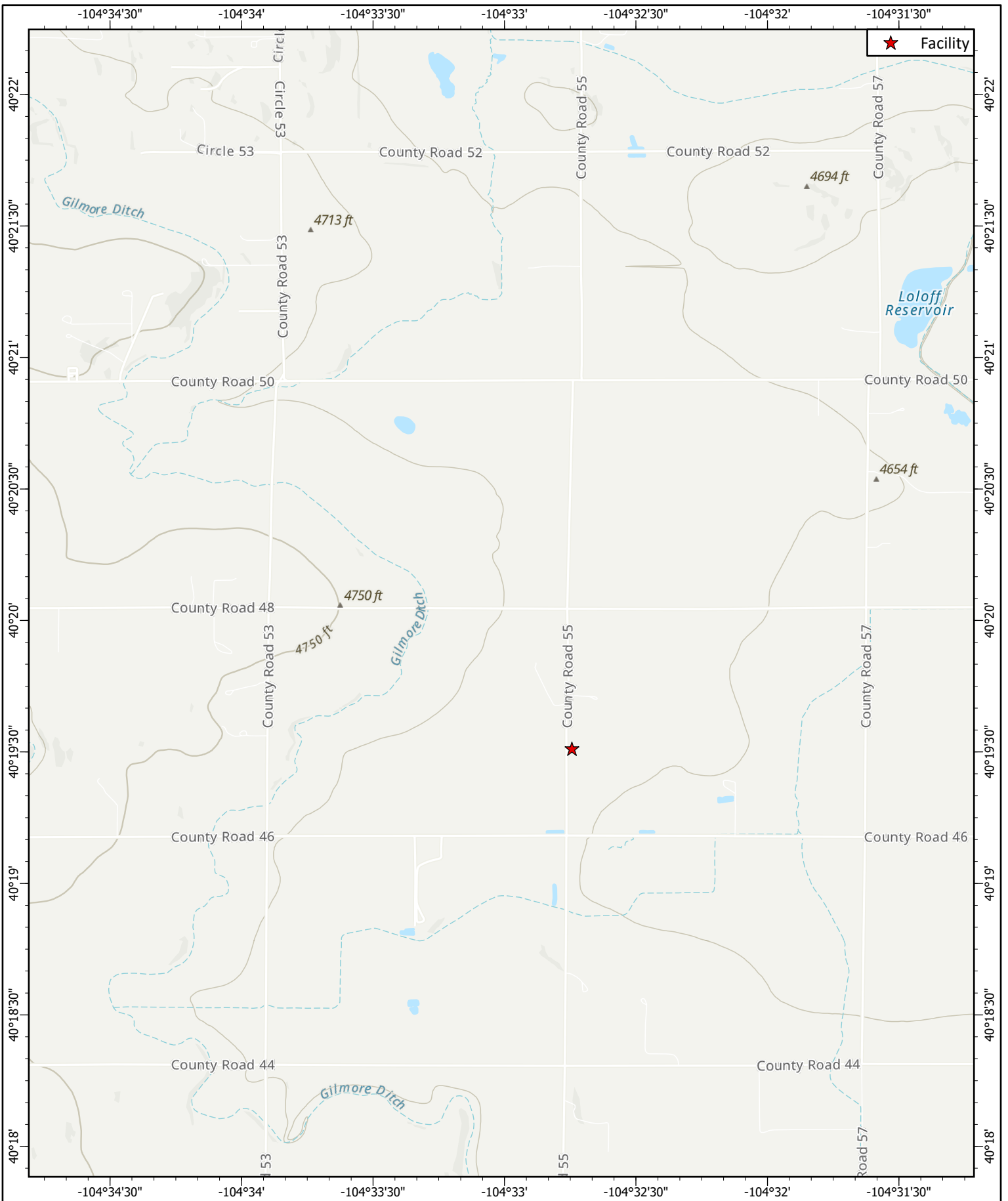
Location name: RICHARDSON-64N64W 10NWSW

Please Circle Facility Type: Tank Battery

Form 19 Information Summary

| | |
|---|---|
| Site Name | RICHARDSON-64N64W 10NWSW |
| API # | N/A |
| REM # | 34536 |
| Facility ID | 329334 |
| Coordinates | 40.325201, -104.545739 (SEP01-DL@3') |
| S/T/R | NWSW 10/4N/64W |
| Cause of Release | Presumed production activities |
| Date of Discovery | 12/17/2025 |
| Spill Type | Historical |
| Land Use | Cropland |
| Weather Conditions | 24°F and Fair |
| Surface Water | Riverine 0.3mi E |
| Number of Water Wells within ½ Mile Radius | 5 |
| Distance to Closest Water Well | 0.27 mi SE |
| Approximate Depth to Groundwater | >20ft below ground surface |
| Distance to Nearest Wetland | Freshwater Emergent wetland 0.88mi NNW |
| Sensitive Area / Habitat | Commercial Structure 0.05mi N Farming Structure 0.07/0.09mi NNE, 0.08 NE, 0.15 NNW, 0.23 NW Residential Structure 0.09mi N, 0.16/0.17/0.20 NNW Livestock Structure 0.18/0.20/0.23mi NNW, 0.23/0.24/0.24/0.25 NW |
| 100 Year Floodplain | No |
| Release in Municipality | No |
| Fluid Released | Presumed production fluids |
| Volume of Release | Unknown |
| Livestock Present | No |
| Closest Building | Commercial Structure 0.05mi N |
| Soil Type(s) | SW |
| Disposal Facility | N/A |
| Excavation Dimensions | N/A |
| Notes: <i>On Friday, December 5, 2025, Montrose personnel mobilized to the Richardson-64N64W 10NWSW location (Site; 40.325200, -104.545723) to collect confirmation soil samples and perform soil screening as part of tank battery decommissioning activities. Soil sampling and screening locations were based on ECMC regulations. Soil samples collected during decommissioning activities were submitted for the full ECMC Table 915-1 suite of analyses. Laboratory results received on December 17, 2025, indicate that the concentrations of 1,2,4-trimethyl-benzene, 1,3,5-trimethyl-benzene, naphthalene, 1-methyl-naphthalene, and 2-methyl-naphthalene in soil sample SEP01-DL@3' exceed the ECMC Table 915-1 protection of groundwater soil screening levels (GWSSL). 1,2,4-Trimethyl-</i> | |

benzene was detected at a concentration of 0.242 milligram per kilogram (mg/kg) which exceeds the GWSSL of 0.0081 mg/kg. 1,3,5-Trimethyl-benzene was detected at a concentration of 0.119 mg/kg which exceeds the GWSSL of 0.0087 mg/kg. Naphthalene was detected at a concentration of 0.024 mg/kg which exceeds the GWSSL of 0.0038 mg/kg. 1-Methyl-naphthalene was detected at a concentration of 0.066 mg/kg which exceeds the GWSSL of 0.006 mg/kg. 2-Methyl-naphthalene was detected at a concentration of 0.124 mg/kg which exceeds the GWSSL of 0.019 mg/kg. No soil staining or petroleum odors were observed at the SEP01-DL soil sampling location during the decommissioning activities. As shown on Table 2 and Table 3 (attached), organic analyte exceedances were also identified in soil samples associated with excavations completed during decommissioning of produced water vessels (PWVs) and aboveground storage tanks (ASTs) at Richardson-64N64W 10NWSW on December 5, 2025 (AST02@0.5', PWV01-FS@6', and PWV01-FS@6'). The potential release associated the PWVs and ASTs was previously reported to the ECMC in Form 19 document number 404463219 based on field observations.



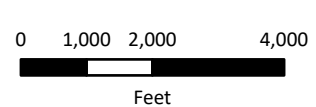
**Topographic Map of
Richardson 64N64W 10NWSW**

Noble-100322 Facility Number: 428133
 NWSW/S10/T4N/R64W REM Number: 34536
 Weld County, Colorado API Number: N/A

Montrose Environmental Group
 Date: 12/5/2025

Reviewed By: R. Bumgardner
 Author: D. Virilar-Knight

Figure 1



Coord. Sys.: GCS North American 1983




MONTROSE
ENVIRONMENTAL

Montrose Environmental Group
Date: 12/18/2025

Reviewed By: R. Bumgardner
Author: D. Virilar-Knight


Potential Release Location (12/05/25)
Richardson 64N64W 10NWSW

Noble-100322
NWSW/S10/T4N/R64W
Weld County, Colorado

Facility Number: 329334
REM Number: 34536
API Number: N/A

Figure 2

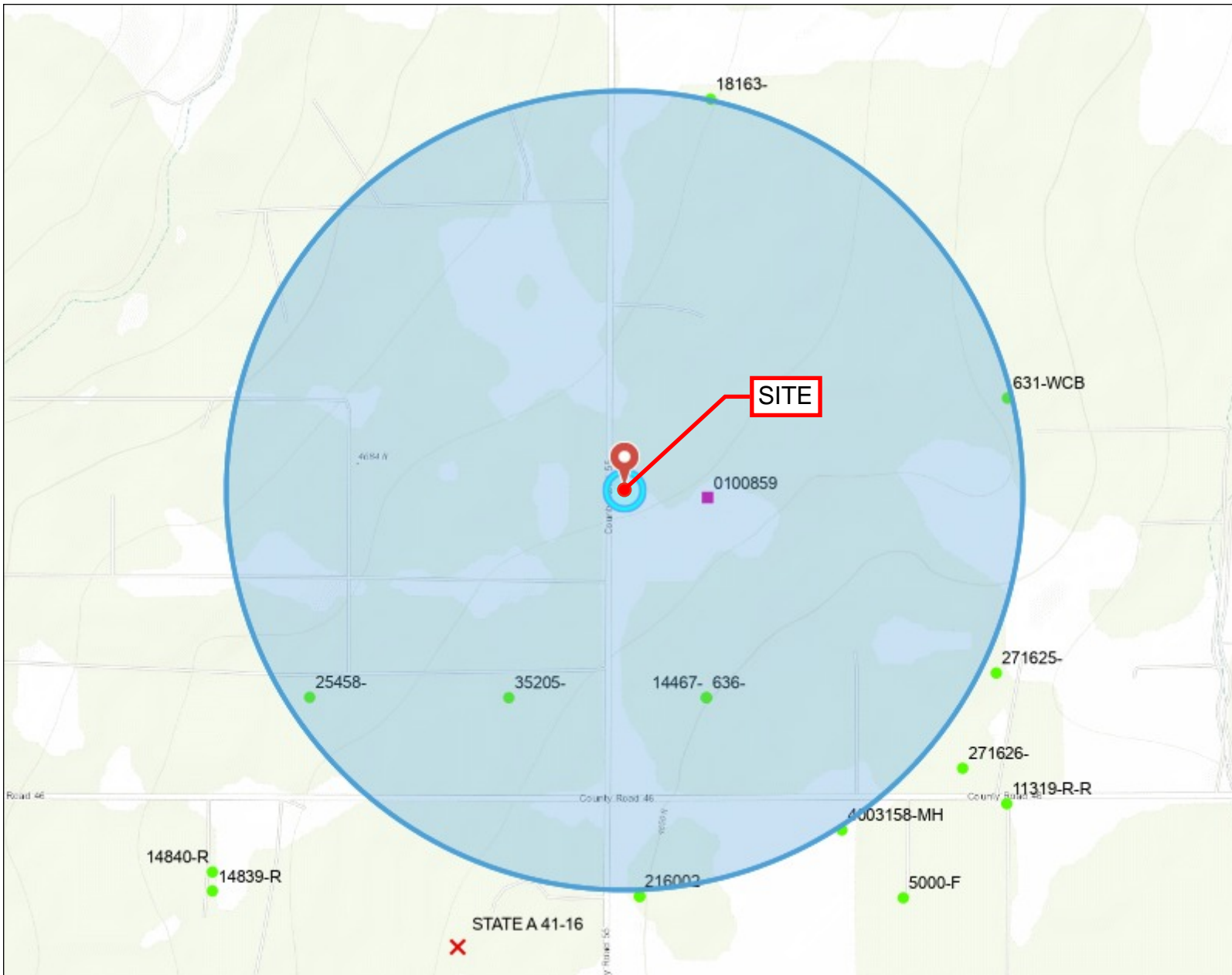
0 25 50 100
Feet



Coord. Sys.: GCS North American 1983



RICHARDSON-64N64W 10NWSW



Legend

- Surface Water
- ▲ All Points of Interest
- Well Constructed
- Final Permit
- ✗ Geophysical Log
- Active Gage - Diversion
- Active Gage - Reservoir
- Active Gage - Stream
- All Stations
- County

Location

Notes

REM#34536

2,000 0 1,000 2,000 Feet



1: 12,000



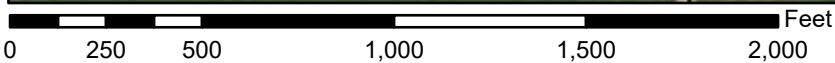
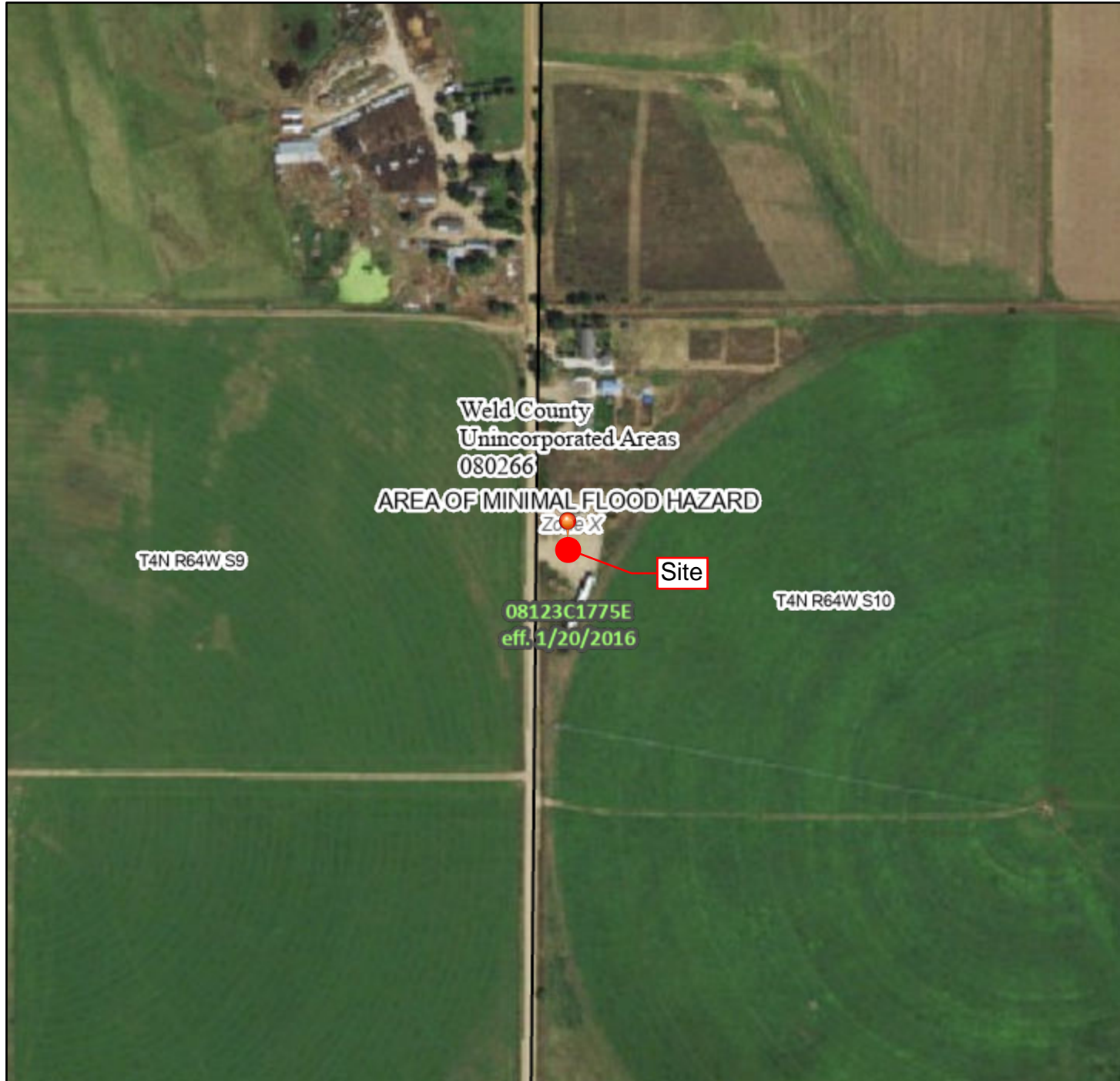
This product is for informational purposes and may not have been prepared for, or be suitable for legal, engineering, or surveying purposes. Users of this information should review or consult the primary data and information sources to ascertain the usability of the information.

Date Prepared: 12/18/2025 7:01:28 AM

National Flood Hazard Layer FIRMMette



104°33'3"W 40°19'44"N



1:6,000

104°32'26"W 40°19'17"N

Basemap Imagery Source: USGS National Map 2023

Legend

SEE FIS REPORT FOR DETAILED LEGEND AND INDEX MAP FOR FIRM PANEL LAYOUT

| | | |
|-----------------------------|--|--|
| SPECIAL FLOOD HAZARD AREAS | | Without Base Flood Elevation (BFE) <i>Zone A, V, A99</i> |
| | | With BFE or Depth <i>Zone AE, AO, AH, VE, AR</i> |
| | | Regulatory Floodway |
| OTHER AREAS OF FLOOD HAZARD | | 0.2% Annual Chance Flood Hazard, Areas of 1% annual chance flood with average depth less than one foot or with drainage areas of less than one square mile <i>Zone X</i> |
| | | Future Conditions 1% Annual Chance Flood Hazard <i>Zone X</i> |
| | | Area with Reduced Flood Risk due to Levee. See Notes. <i>Zone X</i> |
| | | Area with Flood Risk due to Levee <i>Zone D</i> |
| OTHER AREAS | | NO SCREEN Area of Minimal Flood Hazard <i>Zone X</i> |
| | | Effective LOMRs |
| GENERAL STRUCTURES | | Area of Undetermined Flood Hazard <i>Zone D</i> |
| | | Channel, Culvert, or Storm Sewer |
| | | Levee, Dike, or Floodwall |
| OTHER FEATURES | | Cross Sections with 1% Annual Chance Water Surface Elevation |
| | | Coastal Transect |
| | | Base Flood Elevation Line (BFE) |
| | | Limit of Study |
| | | Jurisdiction Boundary |
| MAP PANELS | | Coastal Transect Baseline |
| | | Profile Baseline |
| | | Hydrographic Feature |
| | | Digital Data Available |
| | | No Digital Data Available |
| | | Unmapped |
| | | The pin displayed on the map is an approximate point selected by the user and does not represent an authoritative property location. |



This map complies with FEMA's standards for the use of digital flood maps if it is not void as described below. The basemap shown complies with FEMA's basemap accuracy standards

The flood hazard information is derived directly from the authoritative NFHL web services provided by FEMA. This map was exported on **12/18/2025 at 2:02 PM** and does not reflect changes or amendments subsequent to this date and time. The NFHL and effective information may change or become superseded by new data over time.

This map image is void if the one or more of the following map elements do not appear: basemap imagery, flood zone labels, legend, scale bar, map creation date, community identifiers, FIRM panel number, and FIRM effective date. Map images for unmapped and unmodernized areas cannot be used for regulatory purposes.

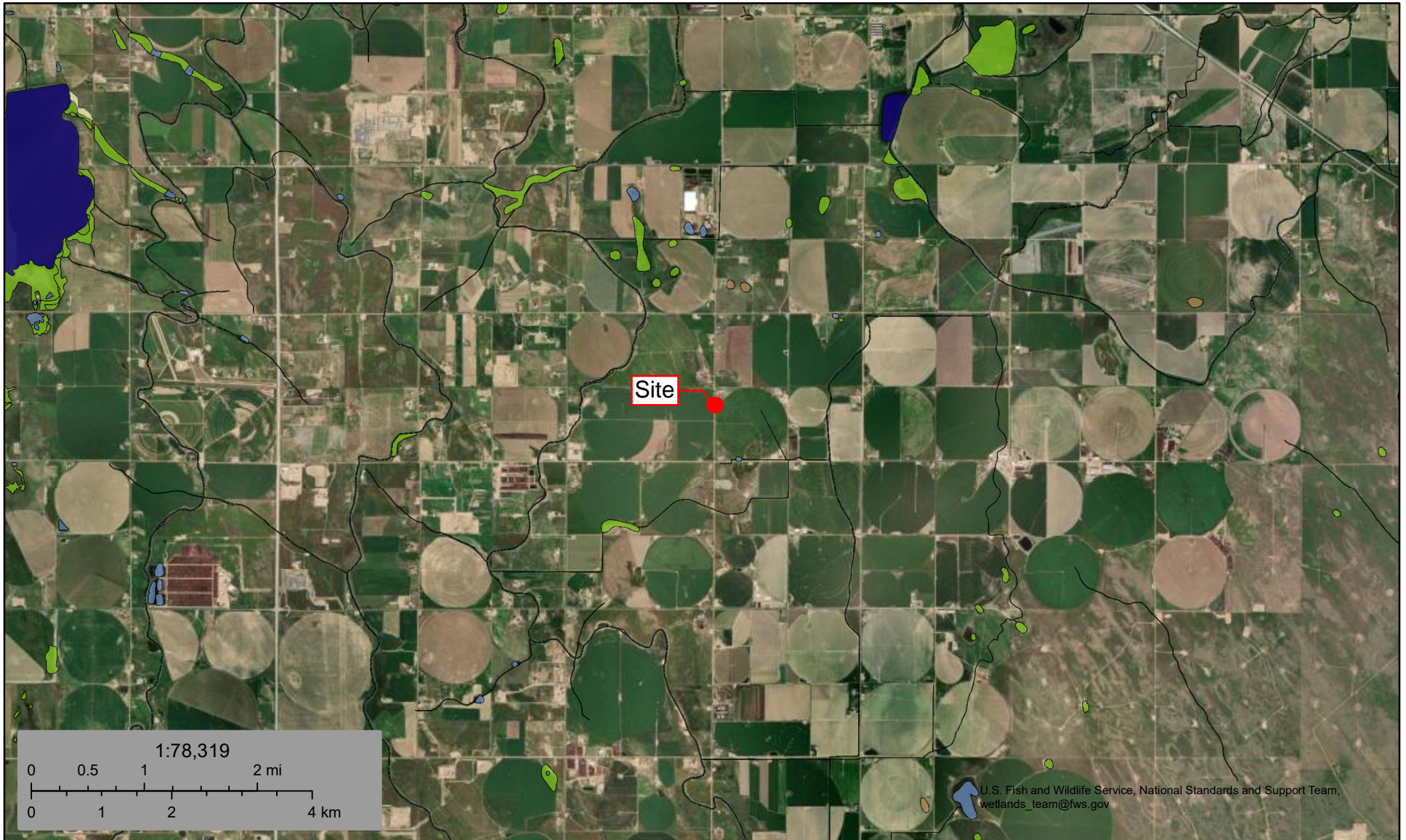


U.S. Fish and Wildlife Service

National Wetlands Inventory

RICHARDSON-64N64W 10NWSW

REM# 34536



December 18, 2025

Wetlands

- | | | | | | |
|---|--------------------------------|---|-----------------------------------|---|----------|
|  | Estuarine and Marine Deepwater |  | Freshwater Emergent Wetland |  | Lake |
|  | Estuarine and Marine Wetland |  | Freshwater Forested/Shrub Wetland |  | Other |
| | |  | Freshwater Pond |  | Riverine |

This map is for general reference only. The US Fish and Wildlife Service is not responsible for the accuracy or currentness of the base data shown on this map. All wetlands related data should be used in accordance with the layer metadata found on the Wetlands Mapper web site.

| | | | |
|--------------------------------|---|--|-----------------------------|
| Client Name: Chevron | Project Name: Richardson-64N64W 10NWSW | Project Location: 40.325200, -104.545723 | REM Number: 34536 |
|--------------------------------|---|--|-----------------------------|

| | | |
|--------------------|----------------------------|---|
| Photo: 1 | Date: 12/05/2025 | Description: Representative picture of general conditions at soil sampling location SEP01-DL (40.325201, -104.545739) in well graded sand (SW) at a depth of approximately three (3) feet bgs (PID: 12.0ppm). No soil staining or petroleum odors were observed. |
|--------------------|----------------------------|---|



TABLE 1
FIELD DATA SUMMARY TABLE
OPERATOR (NOBLE 100322)
RICHARDSON 64N64W 10NWSW, WELD COUNTY, COLORADO
REM # 34536

| Sample ID | Sample Date | Depth (ft) | GPS Data | | PDOP Value | VOC Concentration (ppm) |
|-------------|-------------|------------|-----------|-------------|------------|-------------------------|
| | | | Latitude | Longitude | | |
| AST01@0.5' | 12/5/2025 | 0.5 | 40.325379 | -104.545727 | 0.9 | 0.9 |
| AST02@0.5' | 12/5/2025 | 0.5 | 40.325379 | -104.545678 | 0.9 | 3.6 |
| AST03@0.5' | 12/5/2025 | 0.5 | 40.325370 | -104.545628 | 0.9 | 1.0 |
| PWV01-FS@6' | 12/5/2025 | 6.0 | 40.325428 | -104.545719 | 1.0 | 89.0 |
| PWV02-FS@6' | 12/5/2025 | 6.0 | 40.325441 | -104.545662 | 1.0 | 6.5 |
| PWV03-FS@6' | 12/5/2025 | 6.0 | 40.325433 | -104.545614 | 1.0 | 2.6 |
| PWV-SS09@5' | 12/5/2025 | 5.0 | 40.325410 | -104.545722 | 1.0 | 68.8 |
| SEP01-DL@3' | 12/5/2025 | 3.0 | 40.325201 | -104.545739 | 1.1 | 12.0 |
| SEP02-DL@3' | 12/5/2025 | 3.0 | 40.325206 | -104.545695 | 1.1 | 5.4 |

1. Global Positioning System (GPS) data is provided in decimal degrees using North American Datum (NAD) 83 UTMZone 13 North.

2. Volatile organic compound (VOC) concentrations are measured in the field using a photoionization detector (PID).

PDOP = Position Dilution of Precision

ppm = Parts per million

in. = Inches

ft. = Feet

bgs = Below ground surface

TABLE 2
SUMMARY OF VOLATILE ORGANIC SOIL CHEMISTRY DATA
OPERATOR (NOBLE 100322)
RICHARDSON 64N64W 10NWSW, WELD COUNTY, COLORADO
REM # 34536

| Sample ID | Sample Date | Depth (ft) | Benzene (mg/kg) | Toluene (mg/kg) | Ethyl-Benzene (mg/kg) | Xylenes (mg/kg) | 1,2,4-Trimethyl-Benzene (mg/kg) | 1,3,5-Trimethyl-Benzene (mg/kg) | Naphthalene (mg/kg) | TPH (mg/kg) | TPH GRO (mg/kg) | TPH DRO (mg/kg) | TPH ORO (mg/kg) |
|---|-------------|------------|-----------------|-----------------|-----------------------|-----------------|---------------------------------|---------------------------------|---------------------|----------------|-----------------|-----------------|-----------------|
| ECMC Table 915-1 Limits (Residential SSL) | | | 1.2 | 490 | 5.8 | 58 | 30 | 27 | 2 | 500 | 500** | | |
| ECMC Table 915-1 Limits (Protection of Groundwater SSL) | | | 0.0026 | 0.69 | 0.78 | 9.9 | 0.0081 | 0.0087 | 0.0038 | 500 | 500** | | |
| AST01@0.5' | 12/5/2025 | 0.5 | <0.002 | <0.002 | <0.002 | <0.002 | <0.002 | <0.002 | <0.002 | <500.00 | <0.220 | <27.8 | <111 |
| AST02@0.5' | 12/5/2025 | 0.5 | <0.002 | <0.002 | <0.002 | <0.002 | <0.002 | <0.002 | <0.002 | <500.00 | <0.226 | 140.0 | 179 |
| AST03@0.5' | 12/5/2025 | 0.5 | <0.002 | <0.002 | <0.002 | <0.002 | <0.002 | <0.002 | <0.002 | <500.00 | <0.214 | <27.5 | <110 |
| PWV01-FS@6' | 12/5/2025 | 6.0 | <0.002 | <0.002 | <0.002 | <0.002 | 0.004 | <0.002 | 0.003 | 1.21 | 1.210 | <28.6 | <114 |
| PWV02-FS@6' | 12/5/2025 | 6.0 | <0.002 | <0.002 | <0.002 | <0.002 | <0.002 | <0.002 | <0.002 | <500.00 | <0.221 | <27.9 | <112 |
| PWV03-FS@6' | 12/5/2025 | 6.0 | <0.002 | <0.002 | <0.002 | <0.002 | <0.002 | <0.002 | <0.002 | <500.00 | <0.223 | <28.5 | <114 |
| PWV-SS09@5' | 12/5/2025 | 5.0 | <0.002 | <0.002 | 0.010 | 0.047 | 3.620 | 0.035 | 0.588 | 1506.00 | 376.000 | 778.0 | 352 |
| SEP01-DL@3' | 12/5/2025 | 3.0 | <0.002 | <0.002 | 0.009 | 0.281 | 0.242 | 0.119 | 0.024 | 64.40 | 27.000 | 37.4 | <109 |
| SEP02-DL@3' | 12/5/2025 | 3.0 | <0.002 | <0.002 | <0.002 | <0.002 | <0.002 | <0.002 | <0.002 | <500.00 | <0.219 | <27.4 | <110 |

1. Bold values exceed the ECMC Table 915-1 limit(s)
 2. Red & blue highlighted soil analytical values indicate an exceedance of the referenced soil screening level (SSL)
 3. * Indicates laboratory minimum detection limit in excess of SSL
 4. ** Summation of GRO+DRO+ORO must be less than 500 mg/kg
- (<) = Analytical result is less than the indicated laboratory reporting limit.
TPH-GRO = Total petroleum hydrocarbons - gasoline range organics
TPH-DRO = Total petroleum hydrocarbons - diesel range organics
TPH-ORO = Total petroleum hydrocarbons - oil range organics
mg/kg = Milligrams per kilogram
ft. = Feet
bgs = Below ground surface
NA - Not analyzed

TABLE 3
SUMMARY OF POLYCYCLIC AROMATIC HYDROCARBON SOIL CHEMISTRY DATA
OPERATOR (NOBLE 100322)
RICHARDSON 64N64W 10NWSW, WELD COUNTY, COLORADO
REM # 34536

| Sample ID | Sample Date | Depth (ft) | Acenaphthene (mg/kg) | Anthracene (mg/kg) | Benzo (a) Anthracene (mg/kg) | Benzo (a) Pyrene (mg/kg) | Benzo (b) Fluoranthene (mg/kg) | Benzo (k) Fluoranthene (mg/kg) | Chrysene (mg/kg) | Dibenzo (a,h) Anthracene (mg/kg) | Fluoranthene (mg/kg) | Fluorene (mg/kg) | Indeno (1,2,3-cd) Pyrene (mg/kg) | Pyrene (mg/kg) | 1-Methyl - Naphthalene (mg/kg) | 2-Methyl- Naphthalene (mg/kg) |
|---|-------------|------------|----------------------|--------------------|------------------------------|--------------------------|--------------------------------|--------------------------------|------------------|----------------------------------|----------------------|------------------|----------------------------------|----------------|--------------------------------|-------------------------------|
| ECMC Table 915-1 Limits (Residential SSL) | | | 360 | 1800 | 1.1 | 0.11 | 1.1 | 11 | 110 | 0.11 | 240 | 240 | 1.1 | 180 | 18 | 24 |
| ECMC Table 915-1 Limits (Protection of Groundwater SSL) | | | 0.55 | 5.8 | 0.011 | 0.24 | 0.3 | 2.9 | 9 | 0.096 | 8.9 | 0.54 | 0.98 | 1.3 | 0.006 | 0.019 |
| AST01@0.5' | 12/5/2025 | 0.5 | <0.022 | <0.022 | <0.006 | <0.022 | <0.022 | <0.022 | <0.022 | <0.022 | <0.022 | <0.022 | <0.022 | <0.022 | <0.002 | <0.002 |
| AST02@0.5' | 12/5/2025 | 0.5 | <0.023 | <0.023 | <0.006 | <0.023 | <0.023 | <0.023 | <0.023 | <0.023 | <0.023 | <0.023 | <0.023 | <0.023 | 0.008 | 0.008 |
| AST03@0.5' | 12/5/2025 | 0.5 | <0.021 | <0.021 | <0.005 | <0.021 | <0.021 | <0.021 | <0.021 | <0.021 | <0.021 | <0.021 | <0.021 | <0.021 | <0.002 | <0.002 |
| PWV01-FS@6' | 12/5/2025 | 6.0 | <0.023 | <0.023 | <0.006 | <0.023 | <0.023 | <0.023 | <0.023 | <0.023 | <0.023 | <0.023 | <0.023 | <0.023 | 0.032 | 0.018 |
| PWV02-FS@6' | 12/5/2025 | 6.0 | <0.022 | <0.022 | <0.005 | <0.022 | <0.022 | <0.022 | <0.022 | <0.022 | <0.022 | <0.022 | <0.022 | <0.022 | <0.002 | <0.002 |
| PWV03-FS@6' | 12/5/2025 | 6.0 | <0.023 | <0.023 | <0.006 | <0.023 | <0.023 | <0.023 | <0.023 | <0.023 | <0.023 | <0.023 | <0.023 | <0.023 | <0.002 | <0.002 |
| PWV-SS09@5' | 12/5/2025 | 5.0 | <0.023 | 0.023 | <0.006 | <0.023 | <0.023 | <0.023 | <0.023 | <0.023 | <0.023 | 0.281 | <0.023 | 0.024 | 4.240 | 2.210 |
| SEP01-DL@3' | 12/5/2025 | 3.0 | <0.022 | <0.022 | <0.006 | <0.022 | <0.022 | <0.022 | <0.022 | <0.022 | <0.022 | <0.022 | <0.022 | <0.022 | 0.066 | 0.124 |
| SEP02-DL@3' | 12/5/2025 | 3.0 | <0.022 | <0.022 | <0.006 | <0.022 | <0.022 | <0.022 | <0.022 | <0.022 | <0.022 | <0.022 | <0.022 | <0.022 | <0.002 | <0.002 |

1. Bold values exceed the ECMC Table 915-1 limit(s)
 2. Red & blue highlighted soil analytical values indicate an exceedance of the referenced soil screening level (SSL)
 3. * Indicates laboratory minimum detection limit in excess of SSL
 4. ** Summation of GRO+DRO+ORO must be less than 500 mg/kg
- (<) = Analytical result is less than the indicated laboratory reporting limit.
TPH-GRO = Total petroleum hydrocarbons - gasoline range organics
TPH-DRO = Total petroleum hydrocarbons - diesel range organics
TPH-ORO = Total petroleum hydrocarbons - oil range organics
mg/kg = Milligrams per kilogram
ft. = Feet
bgs = Below ground surface
NA - Not analyzed

TABLE 4
SUMMARY OF SOIL SUITABILITY FOR RECLAMATION
OPERATOR (NOBLE 100322)
RICHARDSON 64N64W 10NWSW, WELD COUNTY, COLORADO
REM # 34536

| Sample ID | Sample Date | Depth (ft) | pH (Standard Units) | EC (mmhos/cm) | SAR (Standard Units) | Boron (mg/L) |
|--|-------------|------------|---------------------------|------------------|----------------------------|-----------------|
| ECMC Table 915-1 Soil Suitability Limits | | | 6 - 8.3 | <4 | <6 | 2 |
| AST01@0.5' | 12/5/2025 | 0.5 | 8.19 | 0.759 | 3.21 | 0.736 |
| AST02@0.5' | 12/5/2025 | 0.5 | 8.04 | 0.926 | 5.32 | 0.987 |
| AST03@0.5' | 12/5/2025 | 0.5 | 8.36 | 0.645 | 3.84 | 0.679 |
| PWV01-FS@6' | 12/5/2025 | 6.0 | 8.03 | 0.398 | 2.85 | 0.502 |
| PWV02-FS@6' | 12/5/2025 | 6.0 | 8.51 | 0.490 | 2.96 | 0.324 |
| PWV03-FS@6' | 12/5/2025 | 6.0 | 8.95 | 0.344 | 2.93 | 0.472 |
| PWV-SS09@5' | 12/5/2025 | 5.0 | 7.89 | 0.445 | 1.19 | 0.447 |
| SEP01-DL@3' | 12/5/2025 | 3.0 | 8.01 | 0.634 | 2.06 | 0.457 |
| SEP02-DL@3' | 12/5/2025 | 3.0 | 8.39 | 0.553 | 5.63 | 1.270 |
| Maximum Background Concentration | | | NA | NA | NA | NA |

1. **Bold** faced values exceed the ECMC Table 915-1 limit(s), but are within background concentrations.

2. **Bold** faced values exceed the ECMC Table 915-1 limit(s) and native background concentrations.

3. Brown highlighted soil analytical values indicate a regulatory exceedance.

NA - Not analyzed

TABLE 5
SUMMARY OF METALS IN SOIL CHEMISTRY DATA
OPERATOR (NOBLE 100322)
RICHARDSON 64N64W 10NWSW, WELD COUNTY, COLORADO
REM # 34536

| Sample ID | Sample Date | Depth (ft) | Arsenic (mg/kg) | Barium (mg/kg) | Cadmium (mg/kg) | Chromium (VI) (mg/kg) | Copper (mg/kg) | Lead (mg/kg) | Nickel (mg/kg) | Selenium (mg/kg) | Silver (mg/kg) | Zinc (mg/kg) |
|---|-------------|------------|-----------------|----------------|-----------------|-----------------------|----------------|--------------|----------------|------------------|----------------|--------------|
| ECMC Table 915-1 Limits (Residential SSL) | | | 0.68 | 15000 | 71 | 0.3 | 3100 | 400 | 1500 | 390 | 390 | 23000 |
| ECMC Table 915-1 Limits (Protection of Groundwater SSL) | | | 0.29 | 82 | 0.38 | 0.00067 | 46 | 14 | 26 | 0.26 | 0.8 | 370 |
| AST01@0.5' | 12/5/2025 | 0.5 | 4.04 | 126.0 | <0.278 | 0.10 | <33.6 | 17.20 | <19.0 | <0.180 | <0.584 | <270 |
| AST02@0.5' | 12/5/2025 | 0.5 | 4.75 | 189.0 | <0.289 | <0.231 | 47.3 | 35.80 | <19.7 | 0.369 | <0.607 | <281 |
| AST03@0.5' | 12/5/2025 | 0.5 | 4.13 | 27.4 | <0.275 | 0.12 | 41.4 | 30.20 | <18.8 | 0.294 | <0.578 | <268 |
| PWV01-FS@6' | 12/5/2025 | 6.0 | 2.78 | 67.9 | <0.292 | <0.231 | <35.3 | <10.80 | <20.0 | <0.189 | <0.615 | <284 |
| PWV02-FS@6' | 12/5/2025 | 6.0 | 3.16 | 70.6 | <0.278 | <0.220 | <33.7 | 10.50 | <19.0 | <0.180 | <0.585 | <271 |
| PWV03-FS@6' | 12/5/2025 | 6.0 | 2.08 | 68.8 | <0.300 | <0.221 | <36.4 | <11.10 | <20.6 | <0.195 | <0.633 | <293 |
| PWV-SS09@5' | 12/5/2025 | 5.0 | 7.66 | 122.0 | <0.285 | <0.228 | <34.5 | 13.20 | <19.5 | <0.184 | <0.600 | <277 |
| SEP01-DL@3' | 12/5/2025 | 3.0 | 3.10 | 85.3 | <0.274 | 0.10 | <33.2 | <10.10 | <18.8 | <0.178 | <0.578 | <267 |
| SEP02-DL@3' | 12/5/2025 | 3.0 | 1.87 | 145.0 | <0.269 | 0.13 | <32.6 | <9.92 | <18.4 | <0.174 | <0.567 | <262 |
| 1.25x Maximum Background Concentration | | | NA | NA | NA | NA | NA | NA | NA | NA | NA | NA |

1. **Bold** faced values exceed the ECMC Table 915-1 limit(s), but are within 1.25x background concentrations.
 2. **Bold** faced values exceed the ECMC Table 915-1 limit(s) and native background concentrations.
 3. Red & blue highlighted soil analytical values indicate an exceedance of the referenced soil screening level (SSL).
 4. Non-detect background results accounted for in the highest background concentration by using the reporting limit.
- ECMC = Energy & Carbon Management Commission
(<) = Analytical result is less than the indicated laboratory reporting limit.
mg/kg = Milligrams per kilogram
ft. = Feet
bgs = Below ground surface
* Indicates laboratory minimum detection limit in excess of SSL
NA - Not analyzed