

Final Reclamation Inspection

August 29th, 2025

Operator: Kerr McGee Oil & Gas Onshore - 47120

Location ID: 329742

Inspection Document #: 714003008

Weld County, CO

Corey Mcdonough
Reclamation Specialist, ECMC



COLORADO

**Energy & Carbon Management
Commission**

Department of Natural Resources

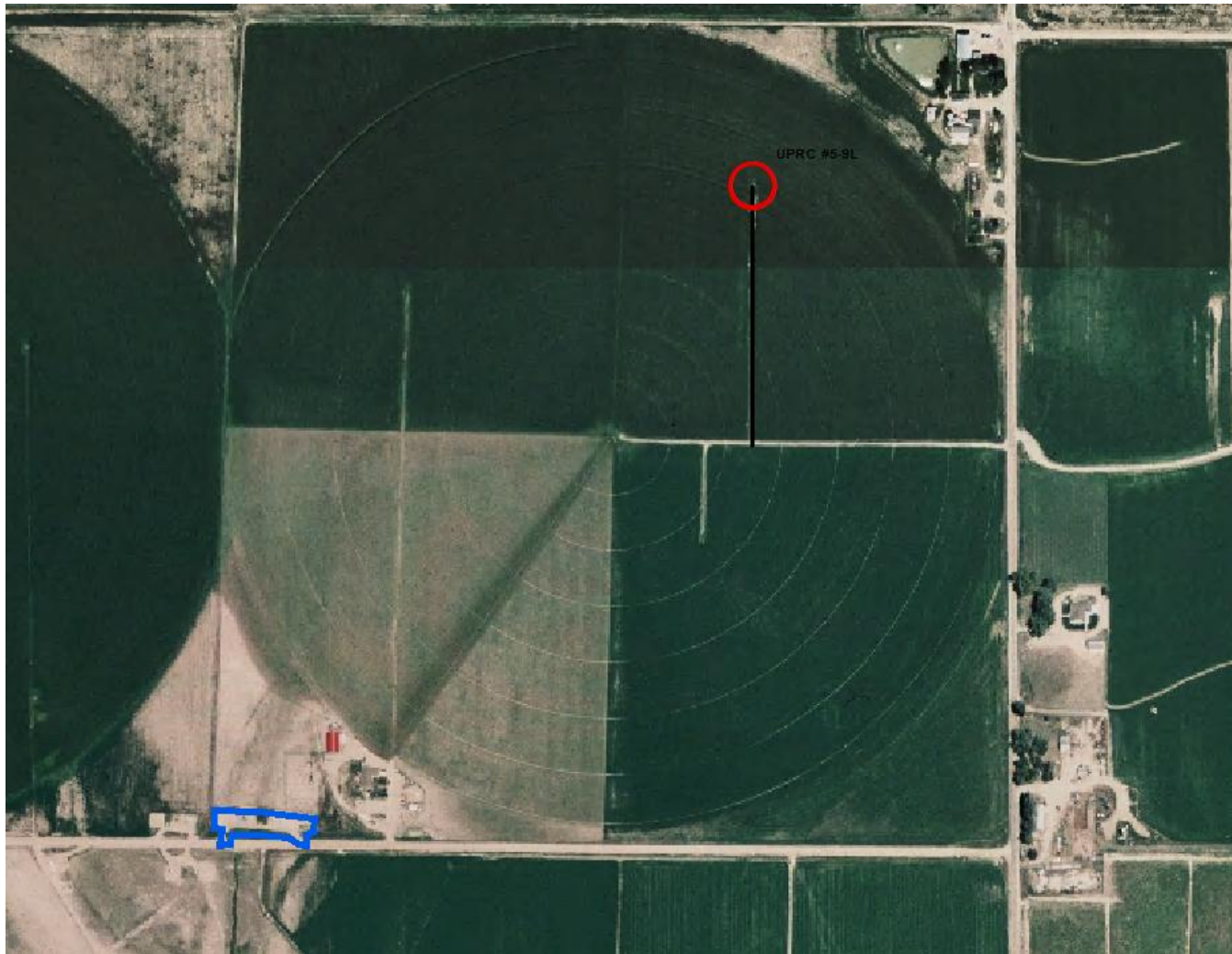


Photo 1. NAIP aerial imagery (2006) illustrating the well location (red circle), associated tank battery location (blue polygon), and well access road.

Inspection Photos
Location Name: UPRC 5-9L
Location ID: 329742

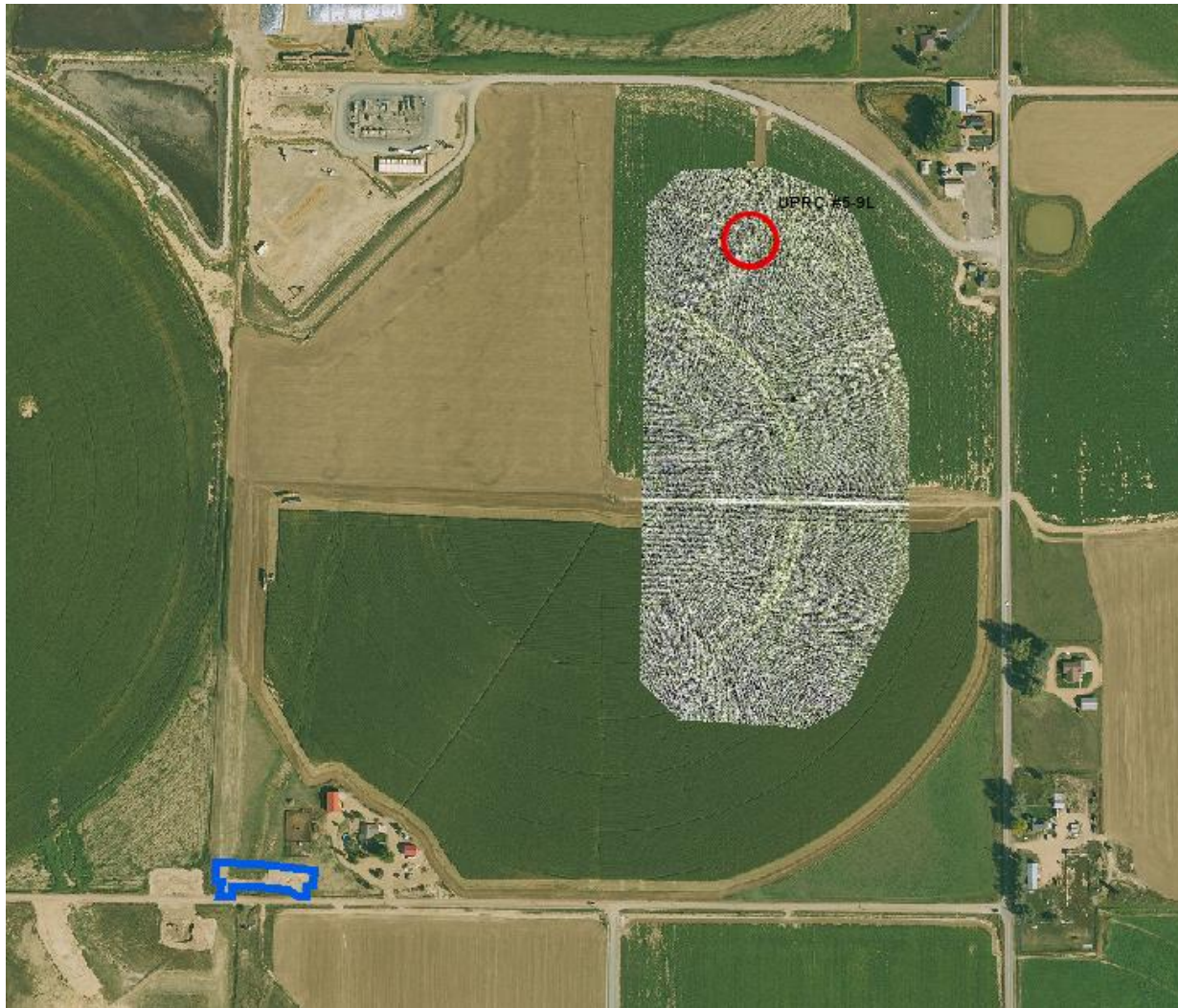


Photo 2. Orthomosaic (drone) imagery taken 8/29/2025 and NAIP aerial imagery (2023) illustrating the well location (red circle) and associated tank battery (blue polygon).





Photo 3. Drone aerial imagery taken south of well location, facing north (displaying the well).



Photo 4. Drone aerial imagery taken west of well location, facing east (displaying the well).



Photo 5. Drone aerial imagery taken north of well location, facing south (displaying the well, access road, and presumed flowline). Crop vegetation at the well pad and access road appears consistent with adjacent reference areas.



Photo 6. Drone aerial imagery taken east of well location, facing west (displaying the well).



Photo 7. Drone aerial imagery taken northeast of well location, facing southwest (displaying the well, access road, presumed flowline, and TB).



Photo 8. Drone aerial imagery taken south of TB location, facing north (displaying the TB location, presumed flowline, access road, and well).



Photo 9. Drone aerial imagery taken west of TB location, facing east (displaying the TB).



Photo 10. Drone aerial imagery taken north of TB location, facing south (displaying the TB).



Photo 11. Drone aerial imagery taken east of TB location, facing west (displaying the TB).



Photo 12. Drone aerial imagery above TB location looking downward (displaying TB reclamation).



Photo 13. Imagery taken on south edge of TB location, facing north (displaying grass growth on TB).



Photo 14. Imagery taken southwest of TB location (displaying an adjacent fallow field for vegetation reference).