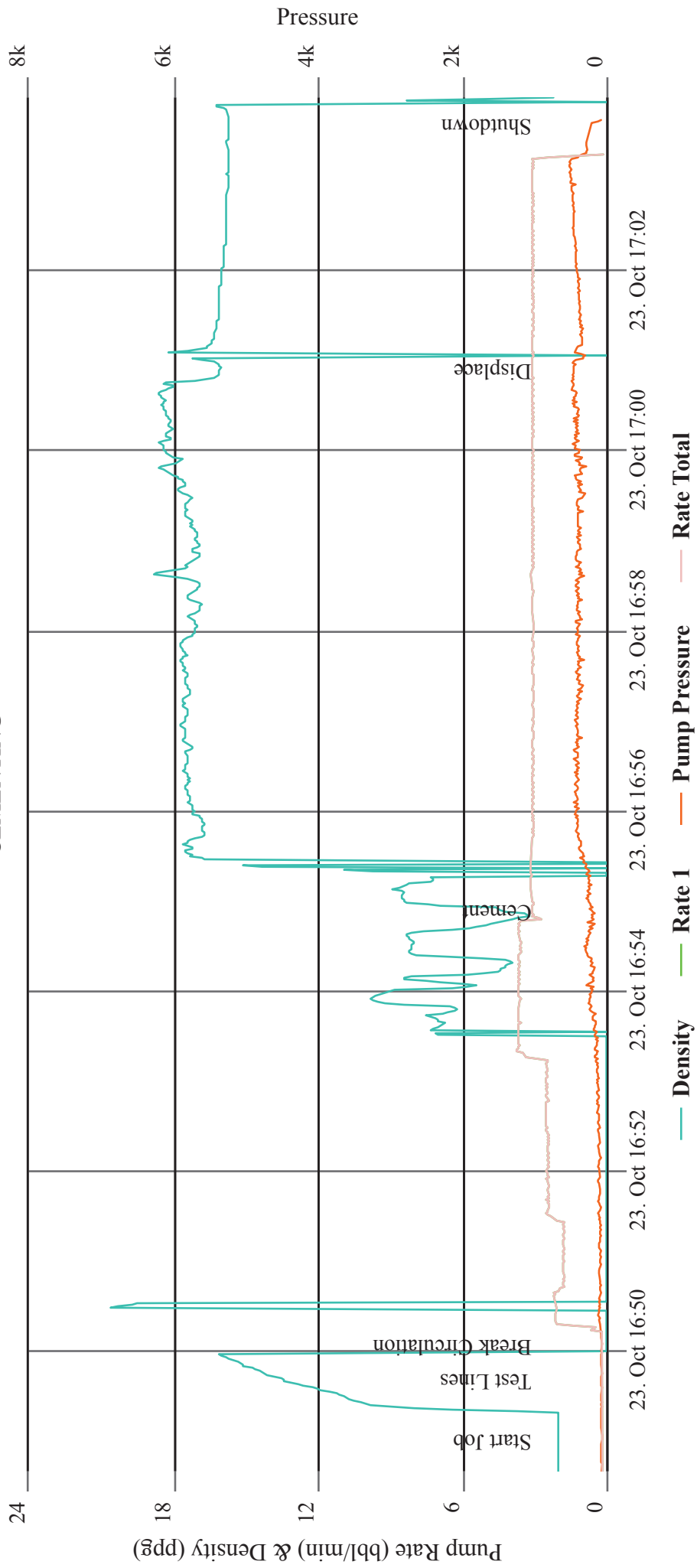






# BURLINGTON NRTHRN STATE 1

## CEMENTING





PO Box 329  
Ft. Lupton, CO 80621  
(303) 654-9202

"Here Safety Meets Quality at the Axis of Efficiency"

Date of Service	Job Type	Customer	Consultant	Well Name	Last Tckt	Ticket #	
10/30/2025	Surface	Civitas	Bernie Chavez	Burlington NRTHRN / State 1	Yes	5854	
State	County	API	Rig	Operator			
Colorado	Arapahoe	05-005-06772	Axis 3009	Samuel Dominguez			
Well Information				Water			
	Work String	Prod CSG	Surface	OH (I.D.)	Annular	Temp	85 °F
OD & Weight	2 3/8" 4.7#			9		PH	7
Factor	0.00387	0	0	0.0787		Chloride	1
Length	7715			7715		Well Description	
Capacity	29.86	0.00	0.00	607.07	0.00	Depth in Ft	
OD & Weight	2 3/8" 4.7#			9		#1 TOC /Tagged	7516'
Factor	0.00387	0	0	0.0787		#1 EOT	7715'
Length	7516			7516		#2 TOC	7450'
Capacity	29.09	0.00	0.00	591.41	0.00	#2 Eot	7516'
OD & Weight	2 3/8" 4.7#			9		#3 TOC /Tagged	2870'
bbl/ft	0.00387	0	0	0.0787		#3 EOT	3205'
Length	3205			3205		#4 TOC /Tagged	716'
Capacity	12.40	0.00	0.00	252.19	0.00	#4 EOT	2226'
Buoyancy	0.87	Buoyancy	0.87	Buoyancy	0.76	#5 TOC /Tagged	197'
Lift Pressure	PRV	Lift Pressure	PRV	Lift Pressure	PRV	#5 Shoe	208'
7121	5000	6937	4750	2584	1750	#5 EOT	716'
						#6 TOC	Surface
						#6 EOT	197'

**Drivers, Crew and Equipment Allocation**

Driver and Heavy Duty Equipment				Crew and Light Duty Equipment			Misc. Tools or Equipment
Driver	Tractor	Trailer	Mileage	Crew	Equipment	Mileage	Required or Requested
Roger Garcia	8461	CP2900	104	Samuel Dominguez	7475	104	
Jose Serrano	1435	CB2359	104				
Abelino Rodriguez	1634	CB7458	104				
Alexander Pomales	3503	CB7016	104				
Victor Conaway	8109	CB2359	104				
Total Heavy Duty Mileage			520	Total Light Duty Mileage		104	

G Neat	280	1K E-Thixo	440	G Neat	731		
Desc	Qty	Rate	Total	Desc	Qty	Rate	Total
G Neat	280.00			\$Liquid Retarder	7.00		
1K E-Thixo	440.00			\$Sugar	300.00		
G Neat	731.00			Calcium Chloride	700.00		
Pump & Bulk 1st 4hrs	1.00			Defoamer	26.00		
Add'l hrs over 4	28.50						
Data Recording	1.00						
HD Mileage - Pump	104.00						
HD Mileage - Bulk	104.00						
LD Mileage - Pickup	104.00						
Add'l Bulk	3						
HD Mileage - Bulk	104						
HD Mileage - Bulk	104						
HD Mileage - Bulk	104						

Print Sign Date

See page 2 for job log and any necessary remarks

WELL NAME: BURLINGTON NRTHRN STATE 1  
 AFE:  
 COST CODE:  
 ROUTING CODE: TREY SLOAN  
 APPROVAL: HECTOR TERRAZAS  
 DATE 11-01-2025



PO Box 329  
 Ft. Lupton, CO 80621  
 (303) 654-9202

"Here Safety meets Quality at the Axis of Efficiency"

Date of Service	Customer	Consultant	Well Name	Last Tckt	Ticket #
10/30/2025	Civitas	Bernie Chavez	Burlington NRTHRN / State 1	Yes	5854
State	County	API	Rig	Mileage	Operator
Colorado	Arapahoe	05-005-06772	Axis 3009	0	Samuel Dominguez

**Job Specific Remarks**

(2 3/8" Tubing is PH6)

Time	Injection		Pressure		Slurry		Job Log
	Rate	BBL	PSI	Weight	Yield		
2:00PM							Left Axis yard (10-29-25)
3:00							Arrived on location
3:15							JSA Spot and rig up
3:50							JSA Pump schedule w Rig Crew
4:00	0.5	2	2500	8.34			Pressure test
4:04	2.5	5	1500	8.34			Break Circulation Fresh water
4:06	2.5	21.5	1500	15.8	1.15		Mix and pump Cement (105 sks G)
4:15	2.5	25.2	1500	8.34			Displace fresh water
4:25							Shutdown and release pressure
4:26							Wash Pumps & Lines
4:36							Standby for rig crew
7:02	0.5	1	2500	8.34			Break Circulation Fresh water
7:10							Shutdown Rig crew laydown tbg
7:11							Standby for rig crew
2:50AM							JSA Pump schedule w Rig Crew (10-30-25)
3:00	3	315	2500	9			Break Circulation Mud
4:45	2.5	5	2500	8.34			Spacer- Fresh water
4:47	2.5	6.14	2000	15.8	1.15		Mix and pump Cement (30 sks G)
4:50	2.5	5	2000	8.34			Spacer- Fresh water
4:52	2.5	20	2000	9			Displace mud
5:00							Shutdown and release pressure
5:01							Standby for rig crew
5:15	2.5	10	1500	9			Pump mud
5:19							Shutdown and release pressure
5:20							Wash Pumps & Lines
5:30							Shutdown and release pressure
5:33							Standby for rig crew
7:10							JSA Pump schedule w Rig Crew
7:20	2.5	5	1000	8.34			Break Circulation Fresh water
7:22	2.5	20.48	1000	15.8	1.15		Mix and pump Cement (100 sk g w/ cc)
7:30	2.5	11.5	900	8.34			Displace fresh water
7:35							Shutdown and release pressure
7:37							Wash Pumps & Lines
7:47							Standby for rig crew
11:10							JSA Pump schedule w Rig Crew
11:20	0.5	1	2500	8.34			Pressure test
11:22	2.5	5	1300	8.34			Break Circulation Fresh water
11:24	2.5	94.03	1300	15.8	1.2		Mix and pump Cement(440 sks 1K)
12:02PM	2.5	3.89	1000	8.34			Displace fresh water
12:04							Shutdown and release pressure
12:05							Wash Pumps & Lines
12:15							Standby for rig crew
4:48							JSA Pump schedule w Rig Crew
4:58	2.5	5	350	8.34			Break Circulation Fresh water
5:00	2.5	149.71	600	15.8	1.15		Mix and pump Cement(731 sks G)
6:00							Shutdown and release pressure
6:15							Wash Pumps & Lines
6:30							Standby for rig crew
10:38							JSA Pump schedule w Rig Crew

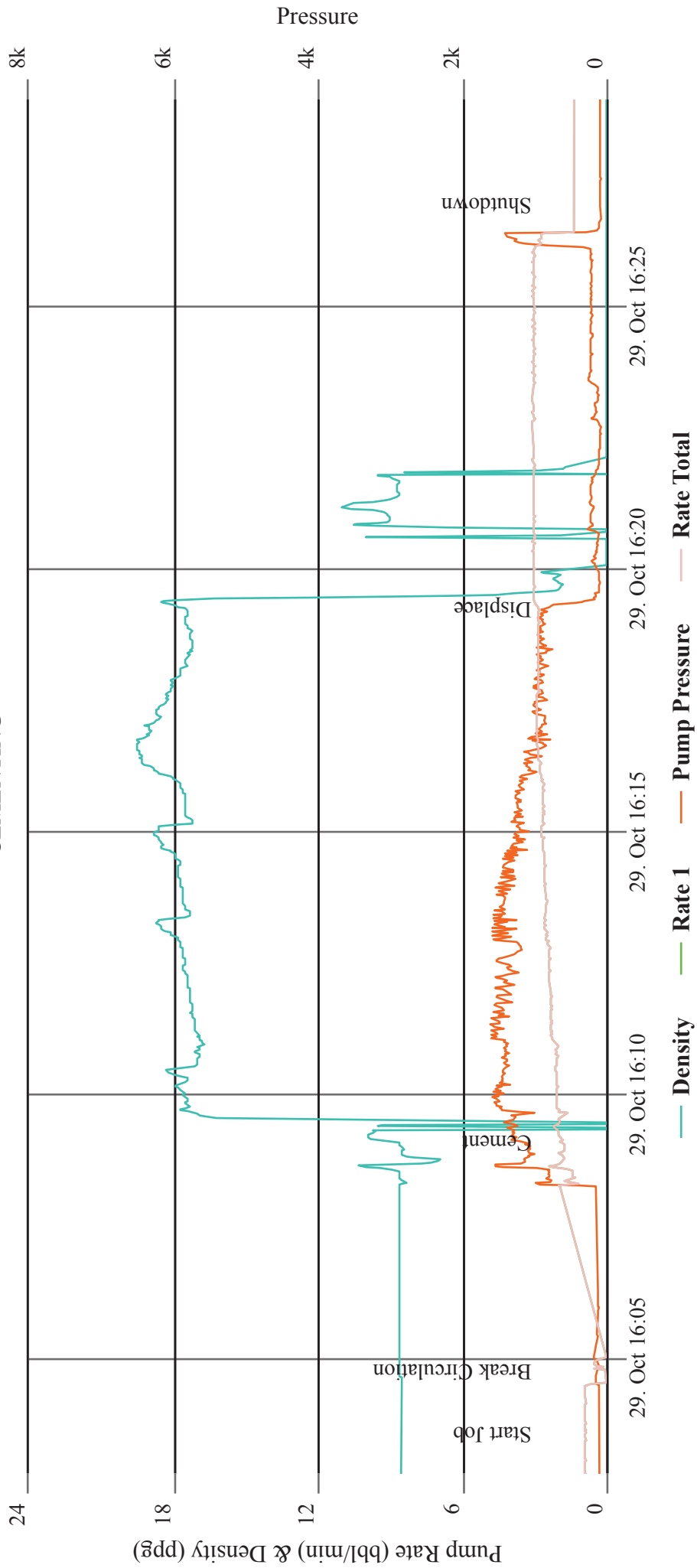
10:48	0.5	1	150	8.34		Pressure test
10:50	2.5	5	150	8.34		Break Circulation Fresh water
10:52	2.5	7.16	150	15.8	1.15	Mix and pump Cement(35 sks G)
10:55						Shutdown and release pressure
10:56	0.5	2.04	0	15.8	1.15	Top off well(10 sks G)
11:00						Wash Pumps & Lines
11:10						Blow down pump and lines
11:20						JSA Rig down Cement equipment
11:30						Leave location
1:00AM						Arrive back at Axis yard(10-31-25)

--	--	--	--	--	--	--

Customer Name (print)	(sign)	(Date)	Date of Service	10/30/2025
			Ticket total	

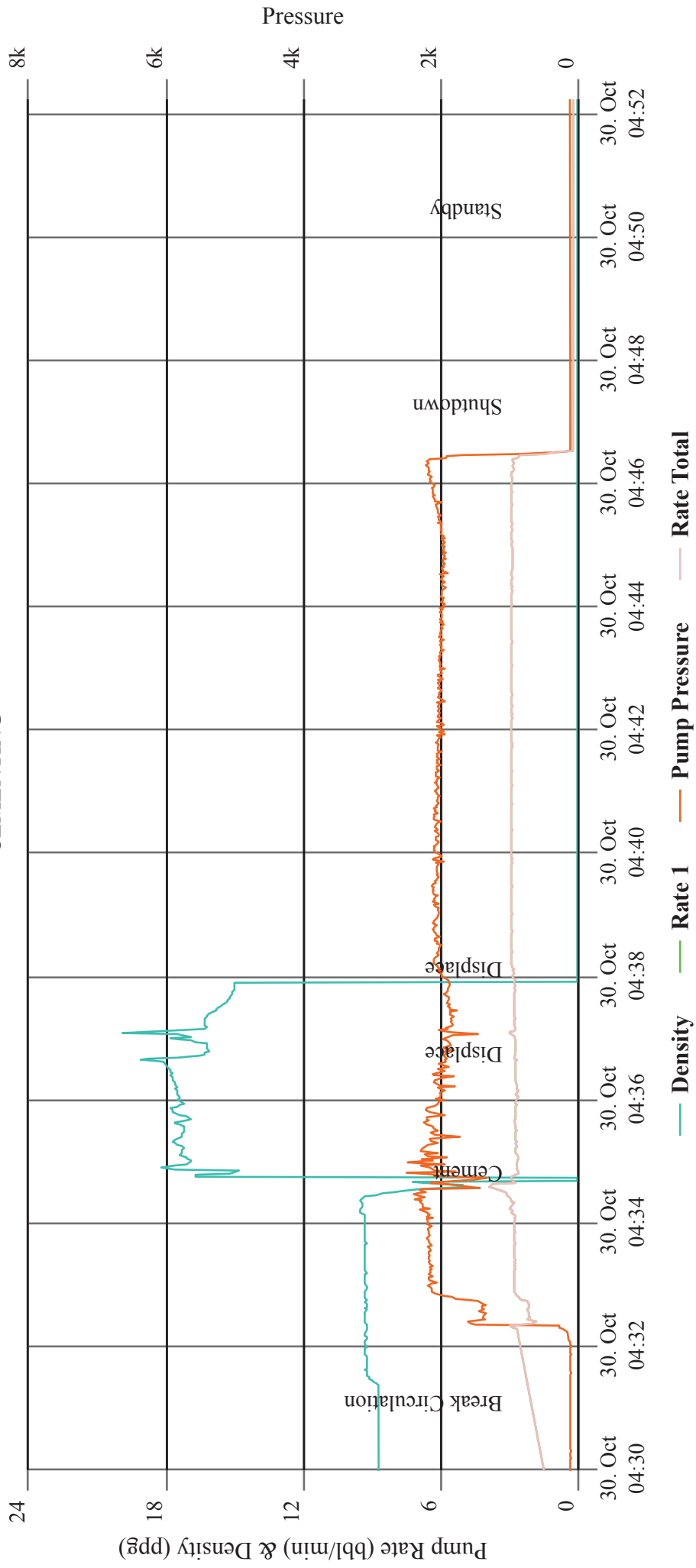
# BURLINGTON NRTHRN STATE 1 PLUG #1

## CEMENTING

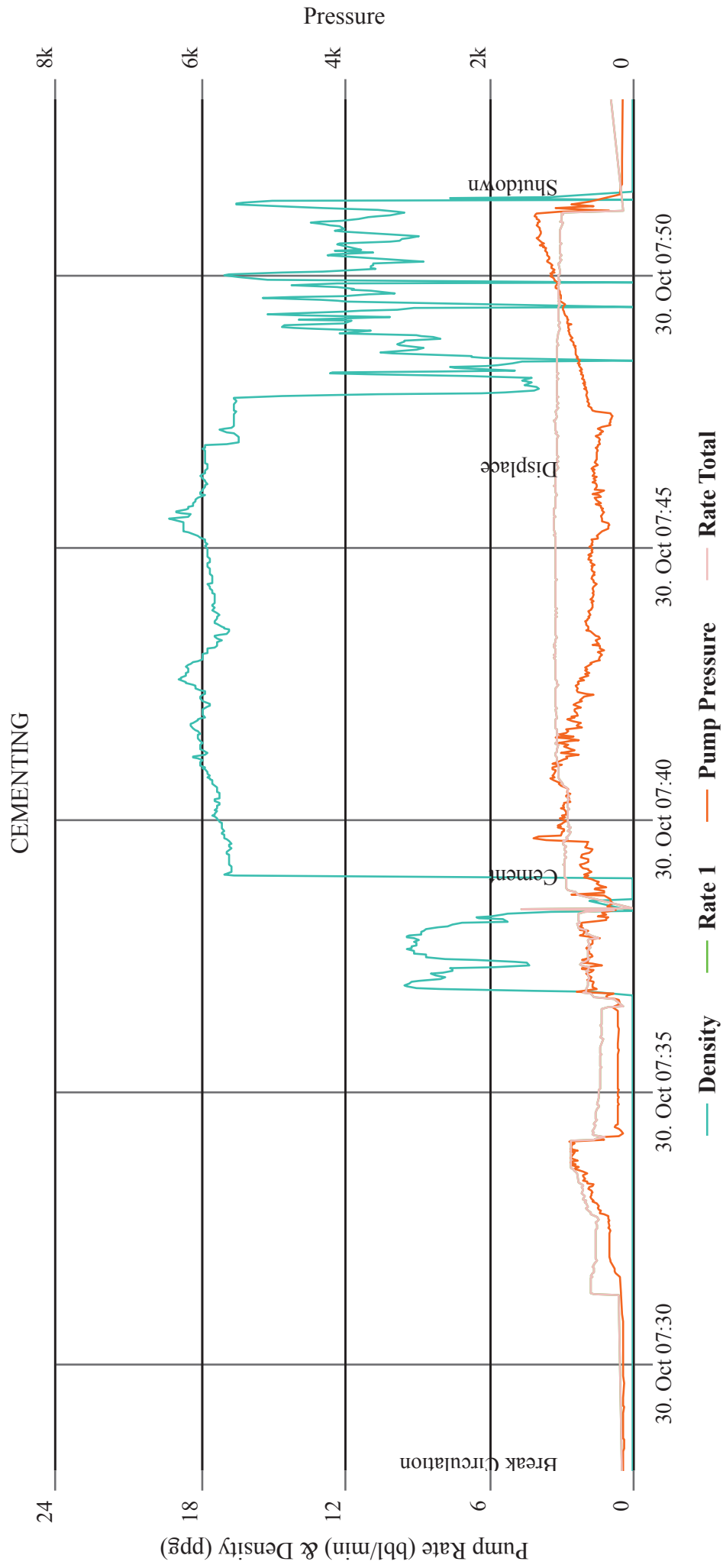


# BURLINGTON NRTHRN STATE 1 PLUG #2

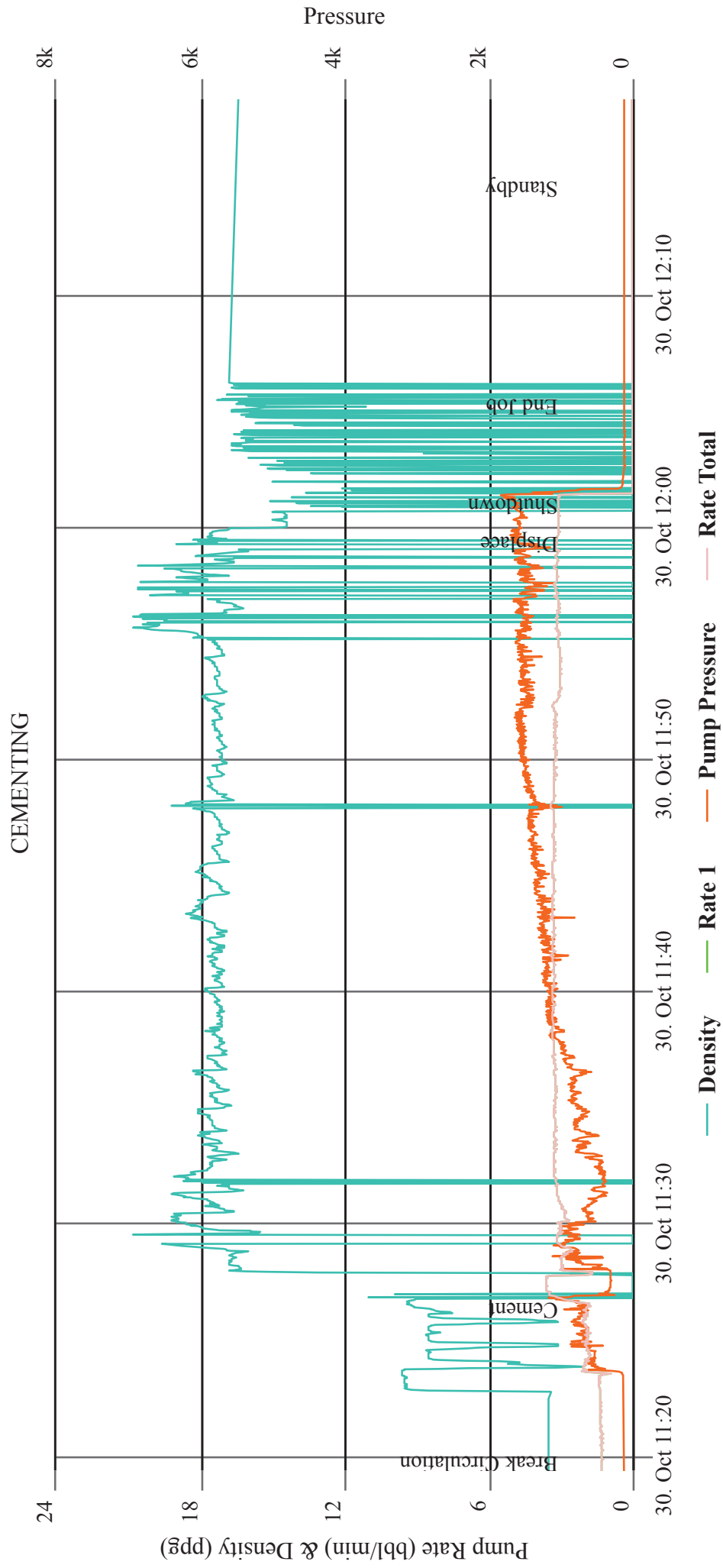
## CEMENTING



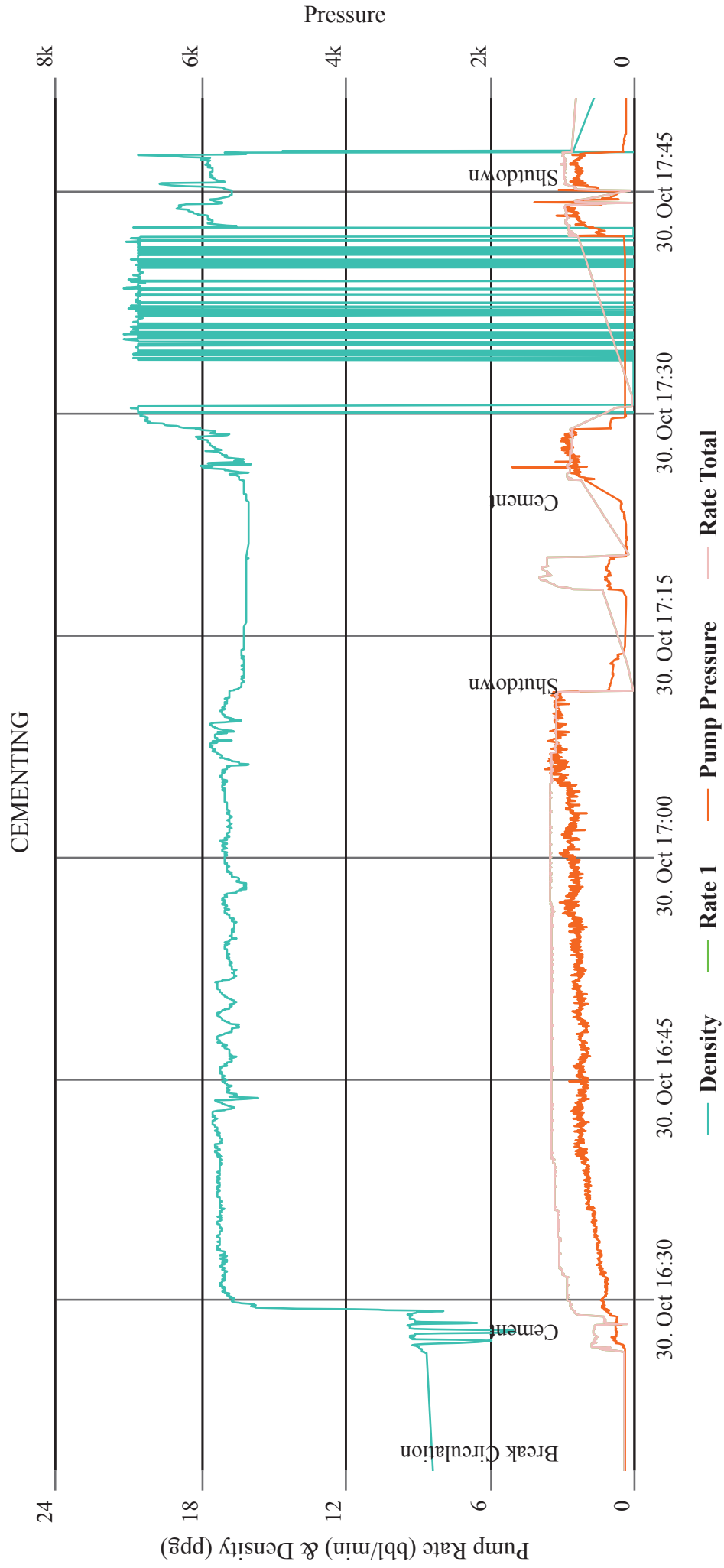
# BURLINGTON NRTHRN STATE 1 PLUG #3



# BURLINGTON NRTHRN STATE 1 PLUG #4



# BURLINGTON NRTHRN STATE 1 PLUG #5



# BURLINGTON NRTHRN STATE 1 PLUG #6

