



CEMENT BOND LOG

Company Evergreen Operating Corporation Well Weston 24-23 "A" WD Field Purgatorie River County Las Animas State Colorado	Country Company Evergreen Operating Corporation Well Weston 24-23 "A" WD Field Purgatorie River County Las Animas State Colorado
Location: Permanent Datum SEC 23 TWP 33S RGE 67W Log Measured From 211' FSL & 1483' FWL Drilling Measured From API 05-071-07690-00 Kelly Bushing 11' Above G.L. Kelly Bushing	API #: Ground Level Elevation 7046 Kelly Bushing 11' Above G.L. Kelly Bushing
Other Services Elevation K.B. 7057 D.F. ----- G.L. 7046	

Date	11/2/02
Run Number	Three
Depth Driller	5310
Depth Logger	5177
Bottom Logged Interval	5175
Top Log Interval	2100
Open Hole Size	7 7/8"
Type Fluid	Water
Density / Viscosity	////
Max. Recorded Temp.	250 Deg F
Estimated Cement Top	2423
Time Well Ready	11:30
Time Logger on Bottom	12:00
Equipment Number	00
Location	Trinidad, Co
Recorded By	S. Allen
Witnessed By	R. Taylor

Borehole Record				Tubing Record			
Run Number	Bit	From	To	Size	Weight	From	To
Two	11	00	1905				
Three	7 7/8	00	5620				

Casing Record			
String	Size	Wgt/Ft	Bottom
Surface String	13 3/8		56
Prot. String	8 5/8		1877
Production String	5 1/2		N/A
Liner			

<<< Fold Here >>>

All interpretations are opinions based on inferences from electrical or other measurements and we cannot and do not guarantee the accuracy or correctness of any interpretation, and we shall not, except in the case of gross or willful negligence on our part, be liable or responsible for any loss, costs, damages, or expenses incurred or sustained by anyone resulting from any interpretation made by any of our officers, agents or employees. These interpretations are also subject to our general terms and conditions set out in our current Price Schedule.

Comments



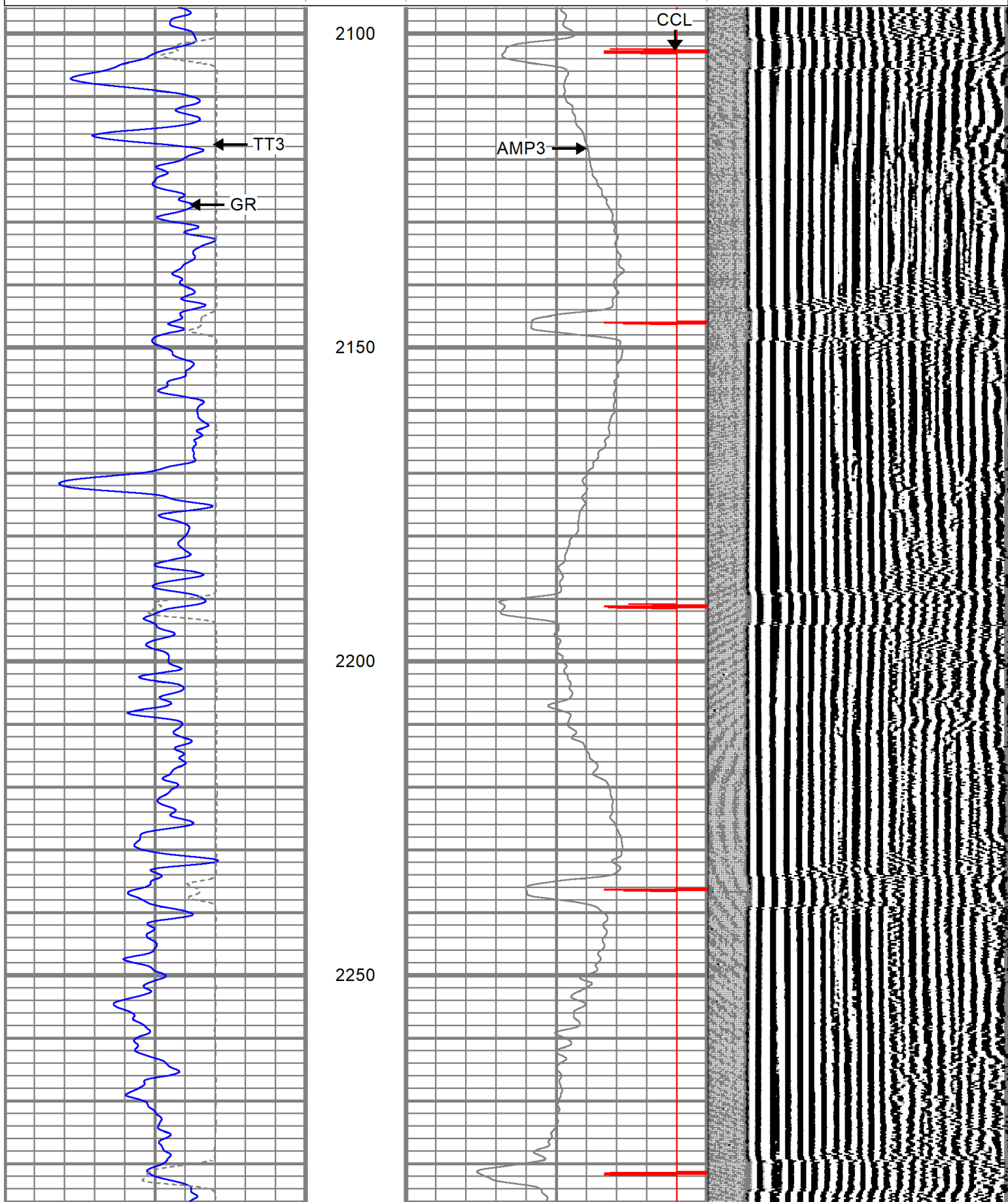
Main Pass

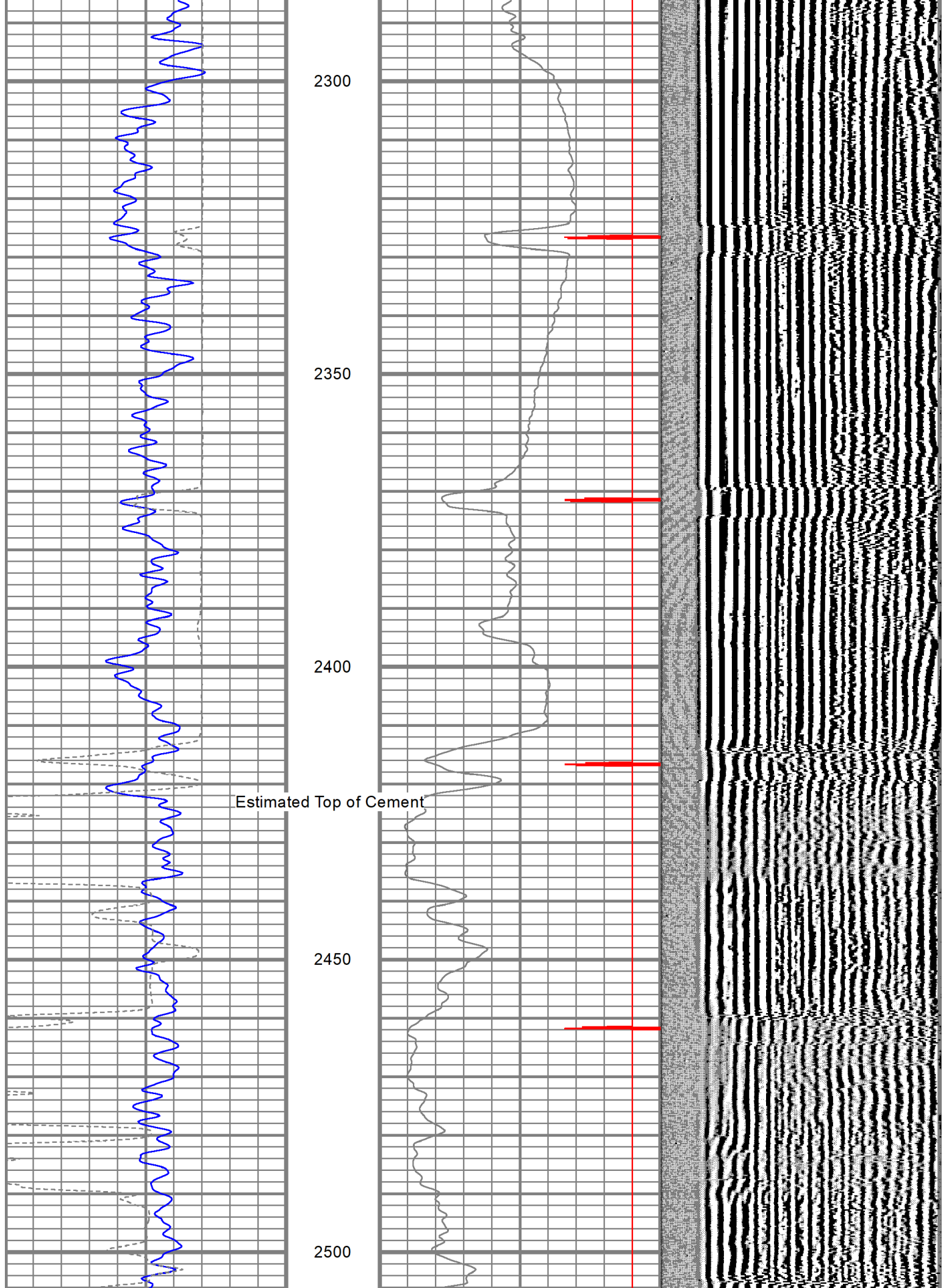
Database File d:\weswdab2.db
 Dataset Pathname run3/pass3
 Presentation Format cb1t2
 Dataset Creation Sat Nov 02 12:58:25 2002 by Log 6.2_B1
 Charted by Depth in Feet scaled 1:240

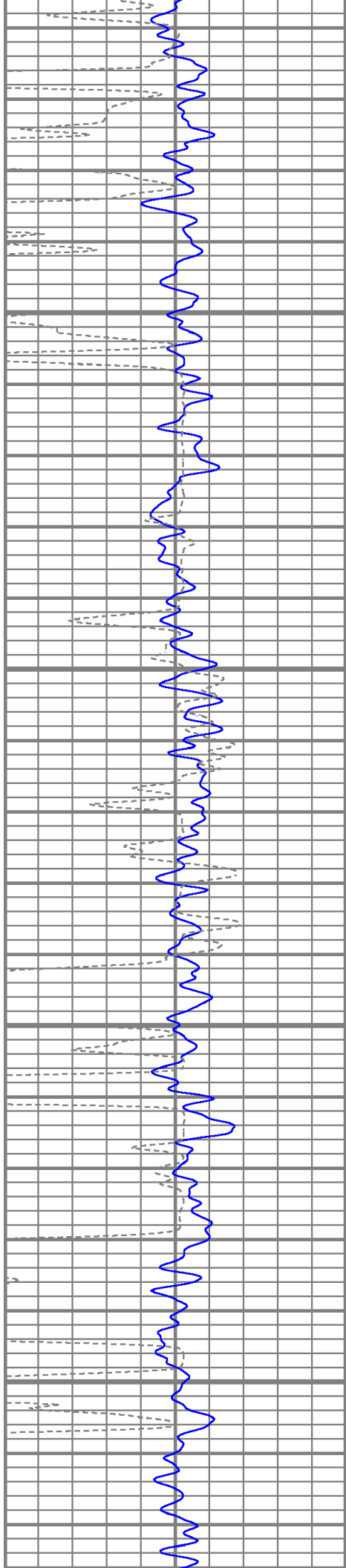
0	GR (GAPI)	200
400	TT3 (usec)	200

0	Amplitude (mV)	100
18	Collar Locator	-2

200 variable density (usec) 1200





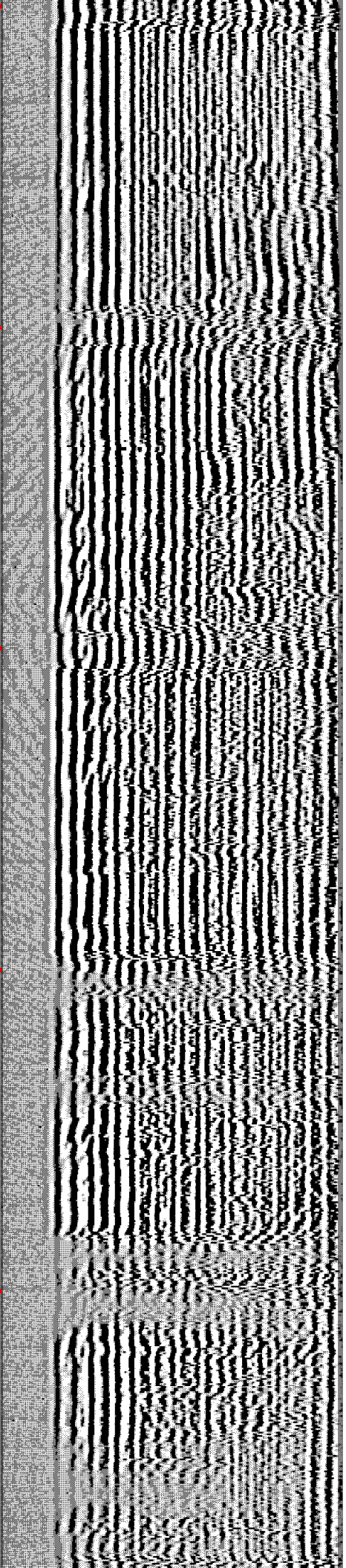
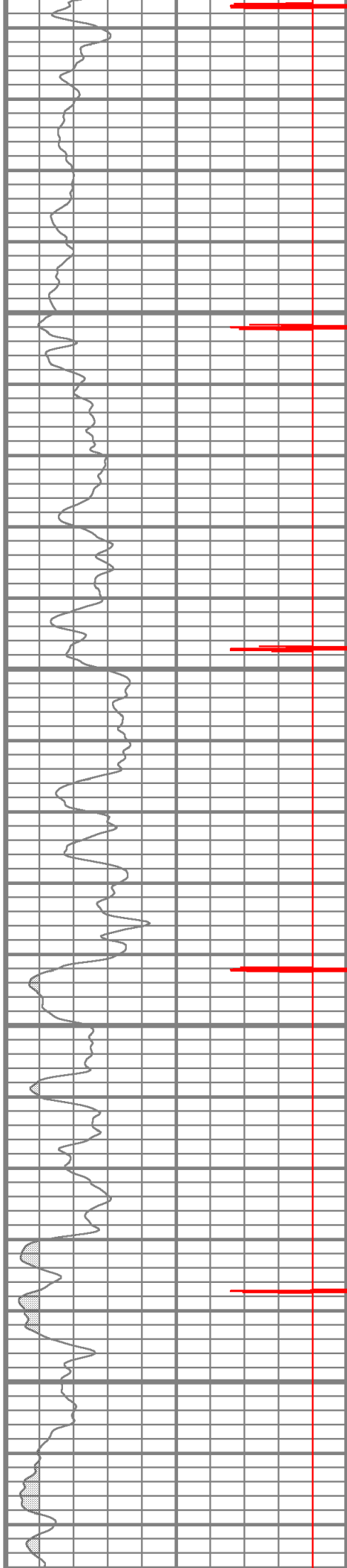


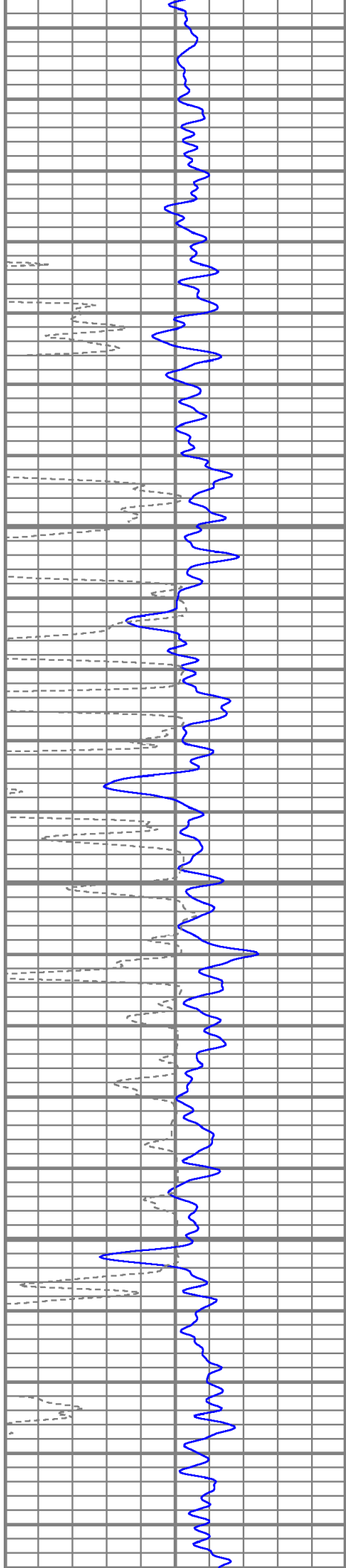
2550

2600

2650

2700



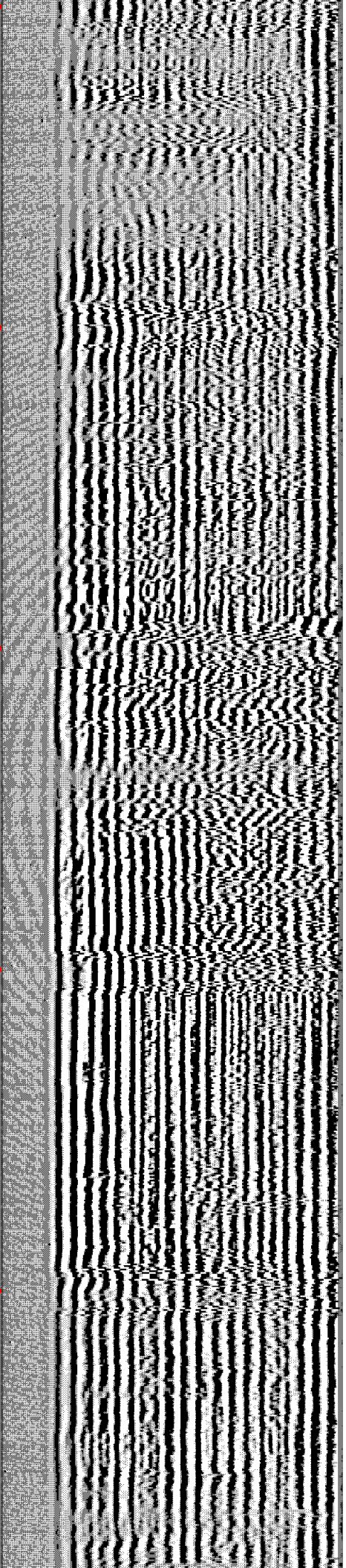
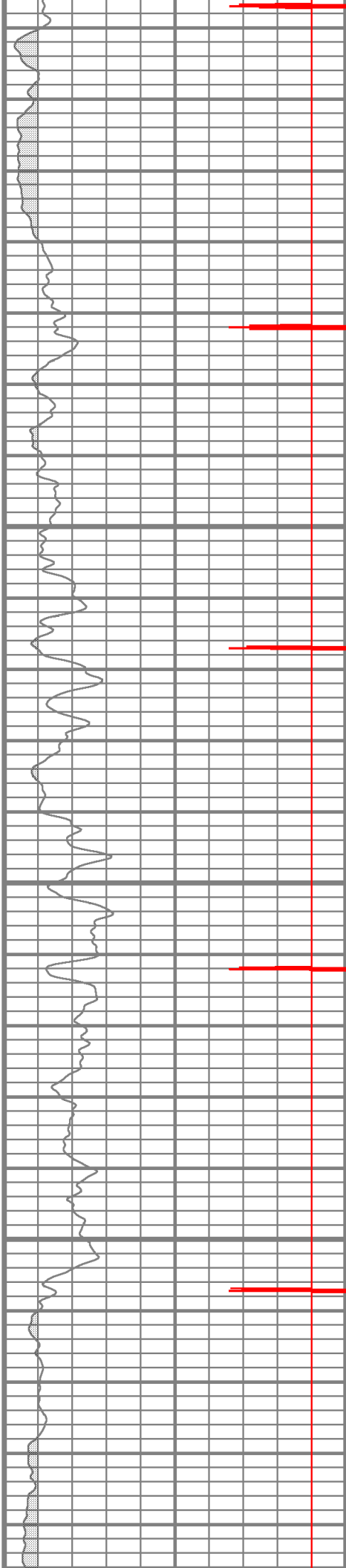


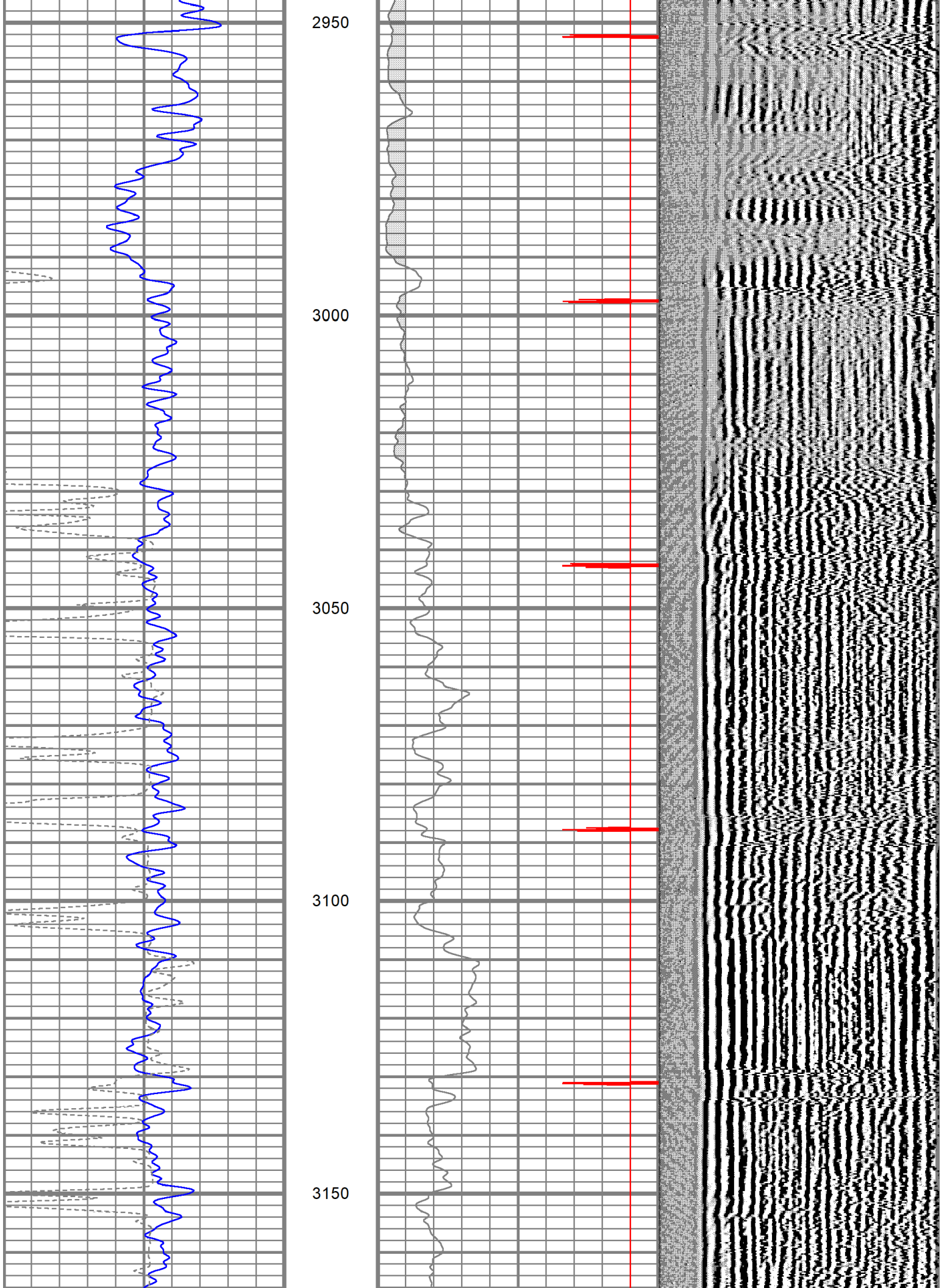
2750

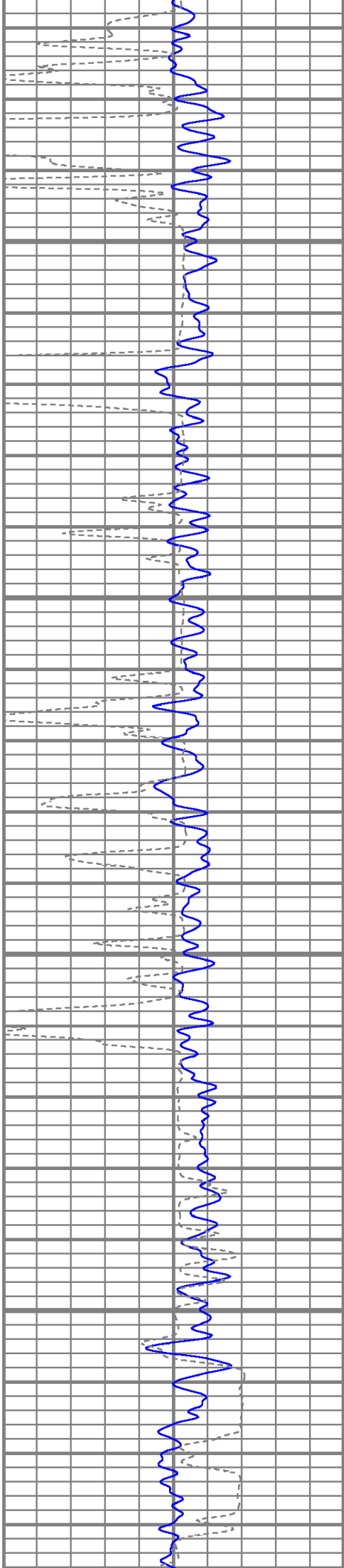
2800

2850

2900





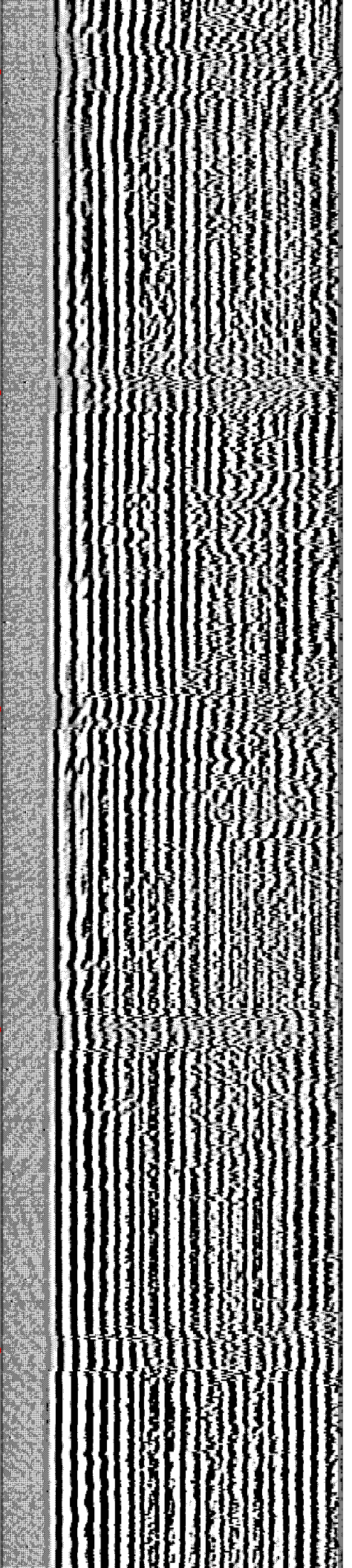
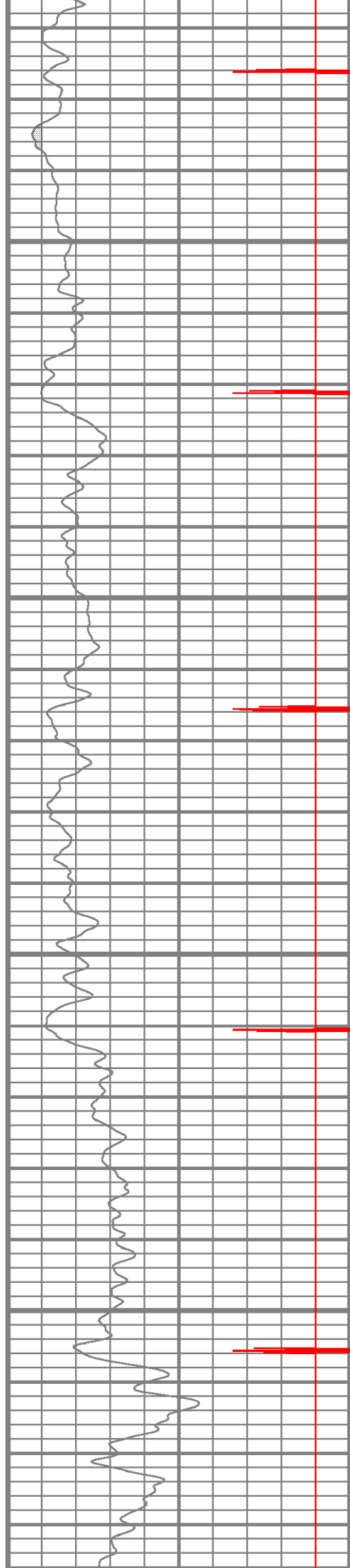


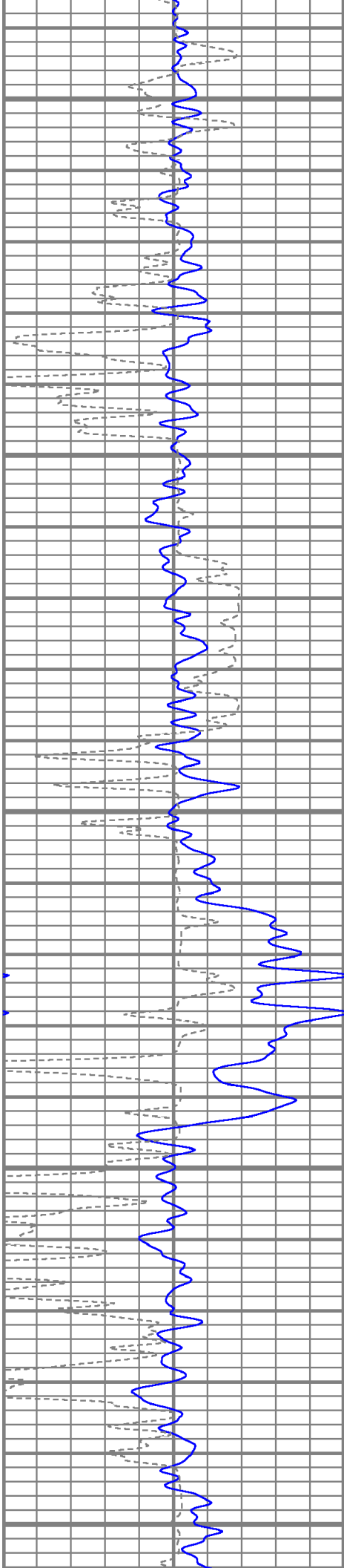
3200

3250

3300

3350





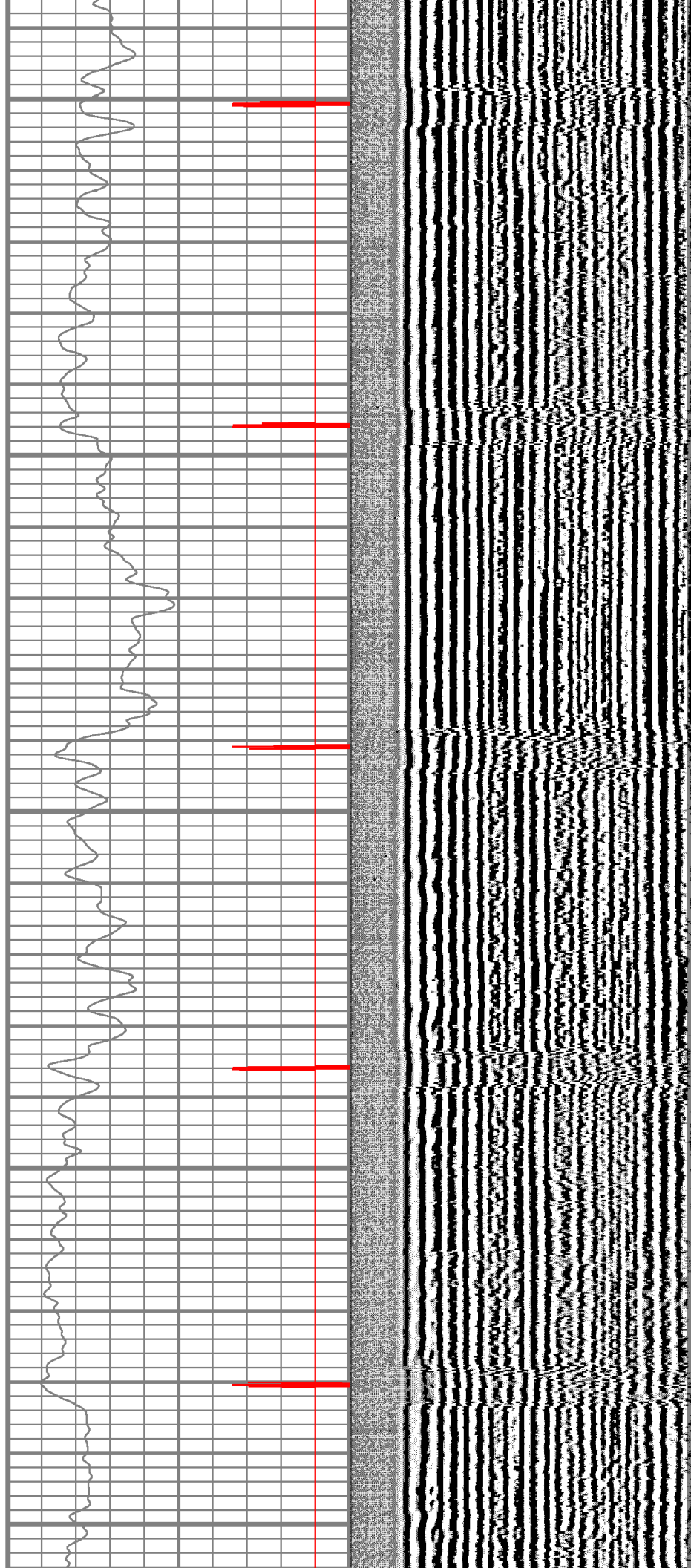
3400

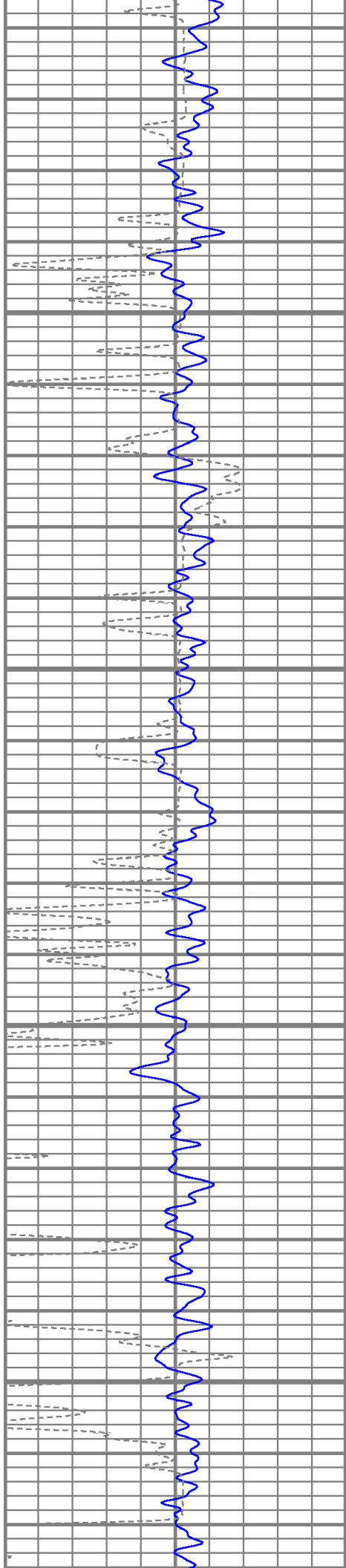
3450

3500

3550

3600



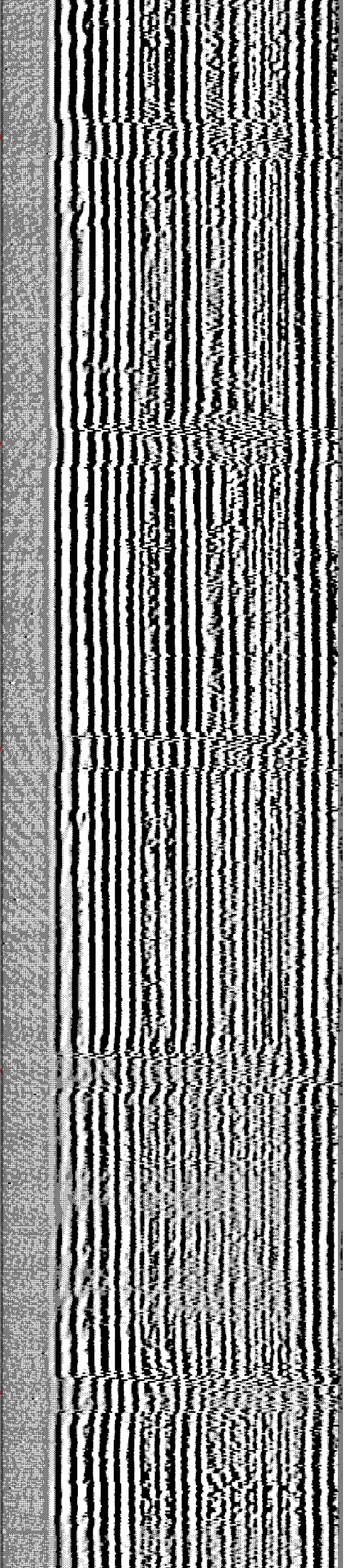
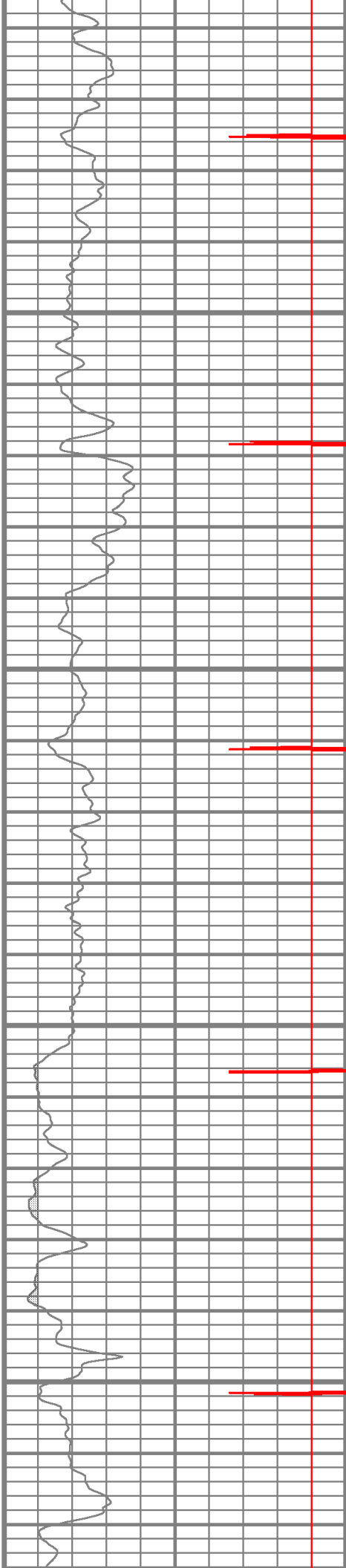


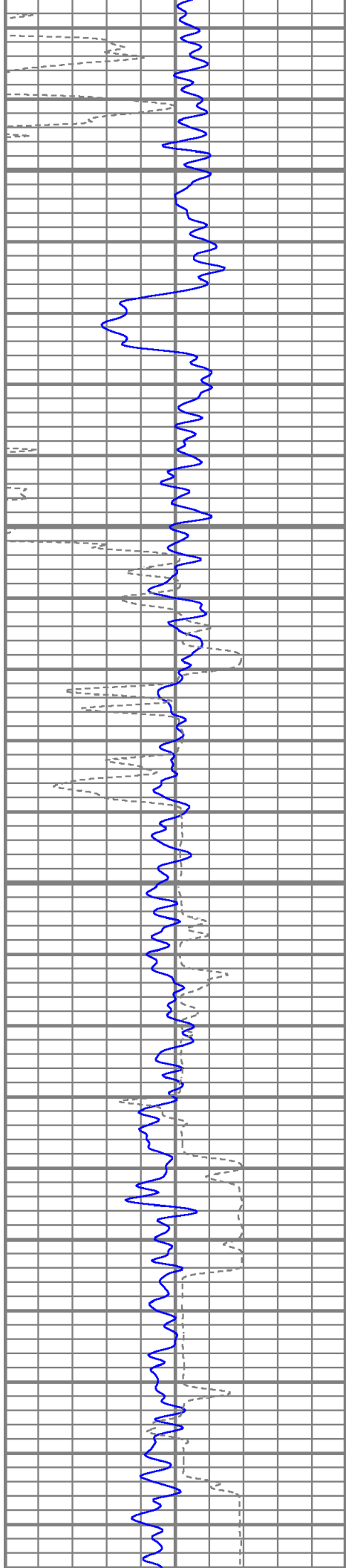
3650

3700

3750

3800



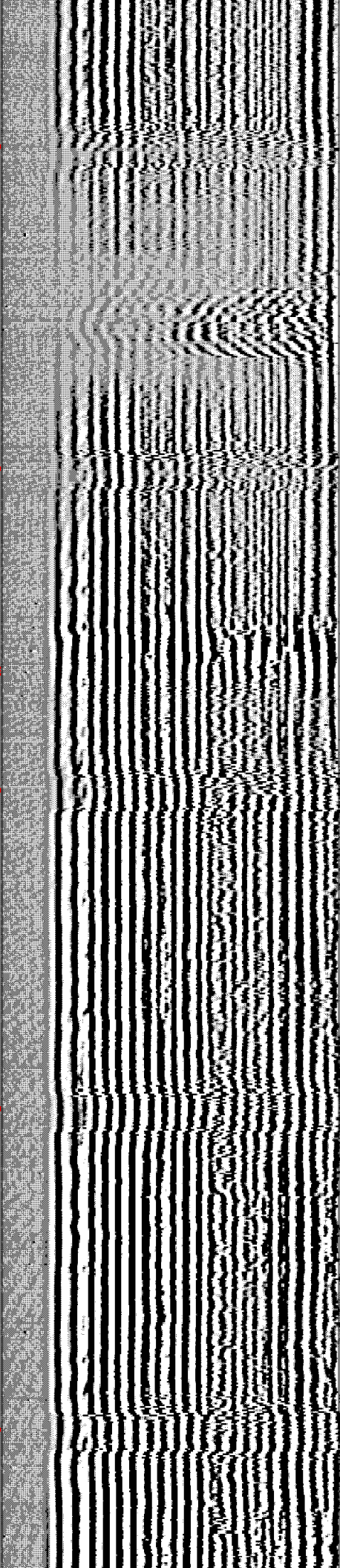
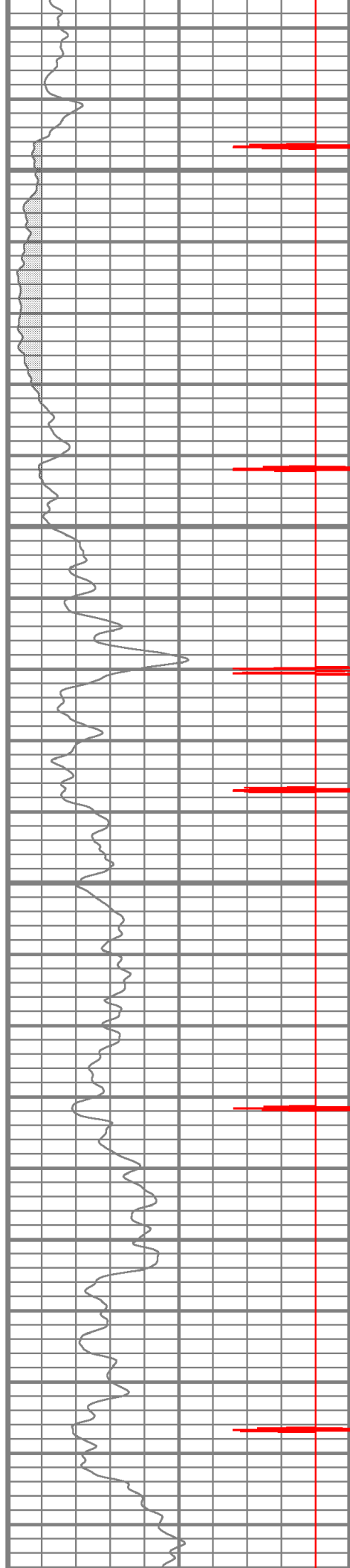


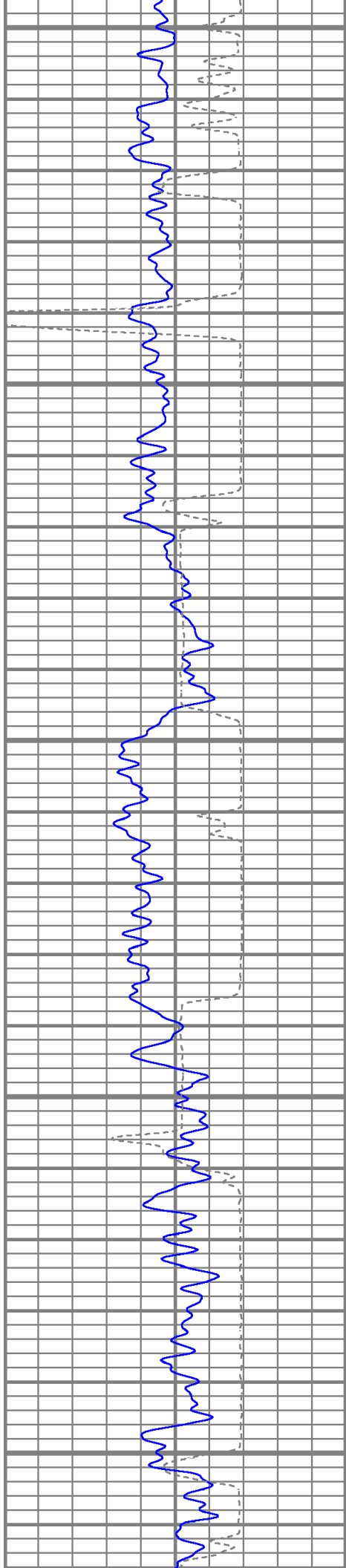
3850

3900

3950

4000





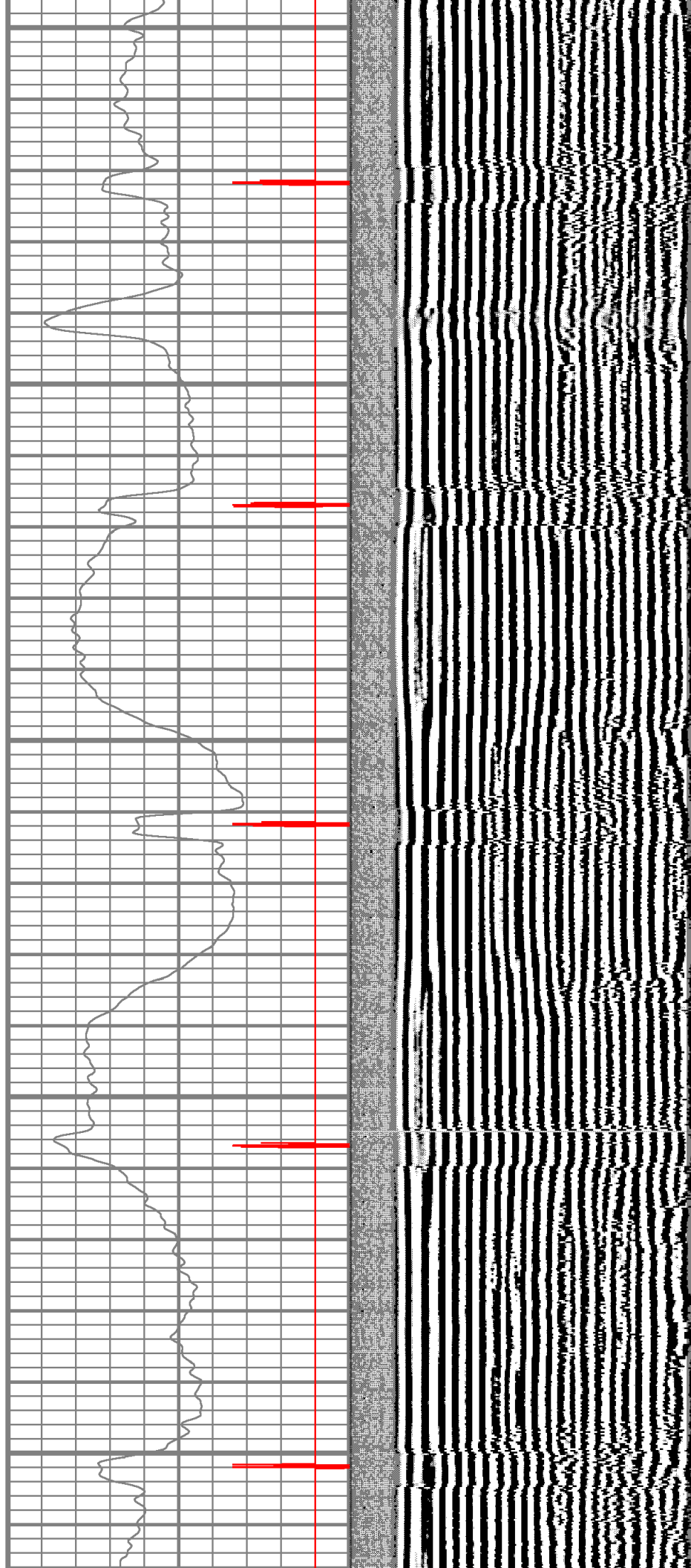
4050

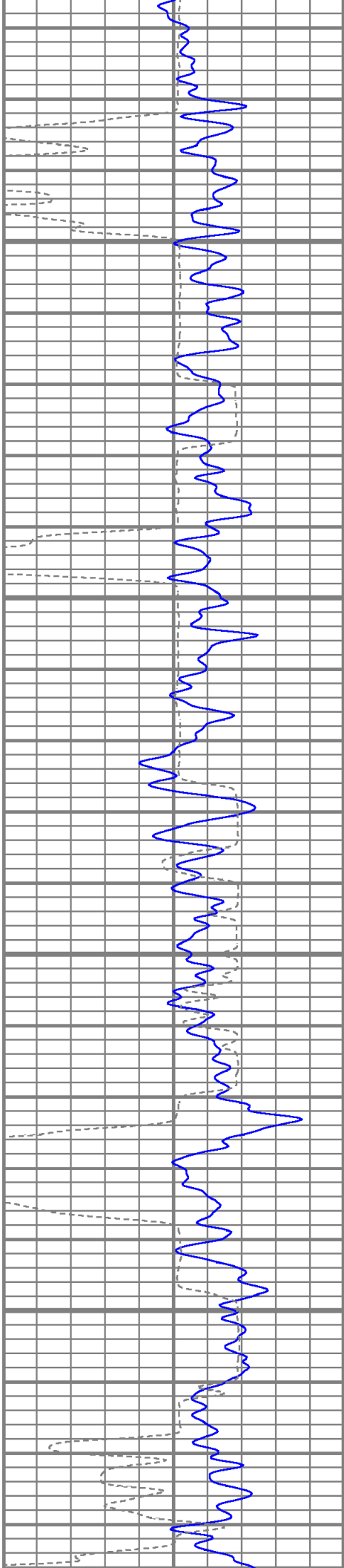
4100

4150

4200

4250



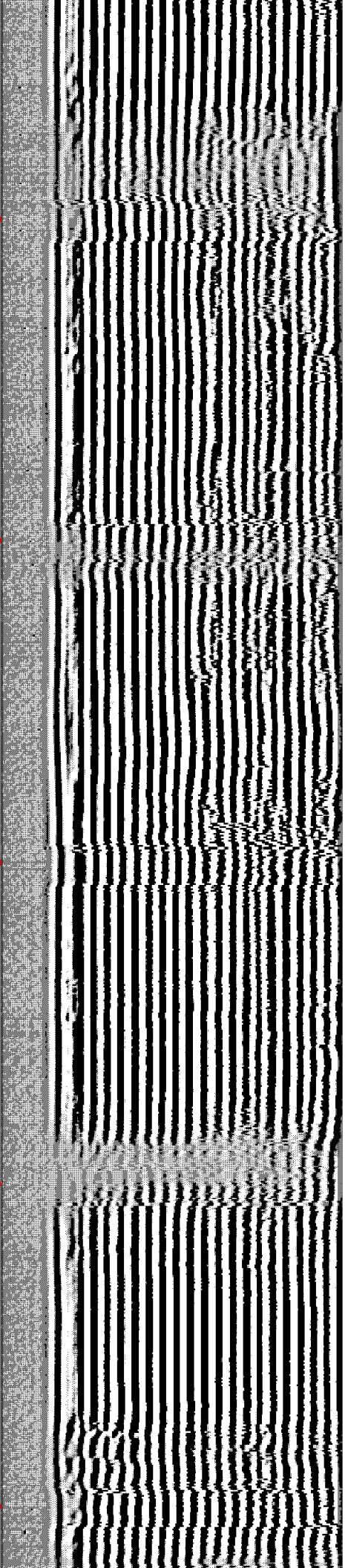
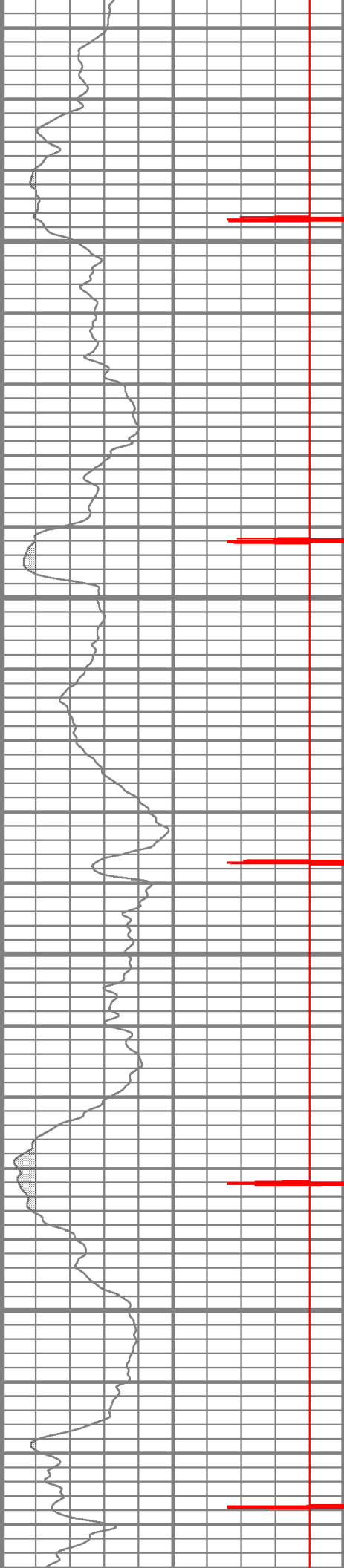


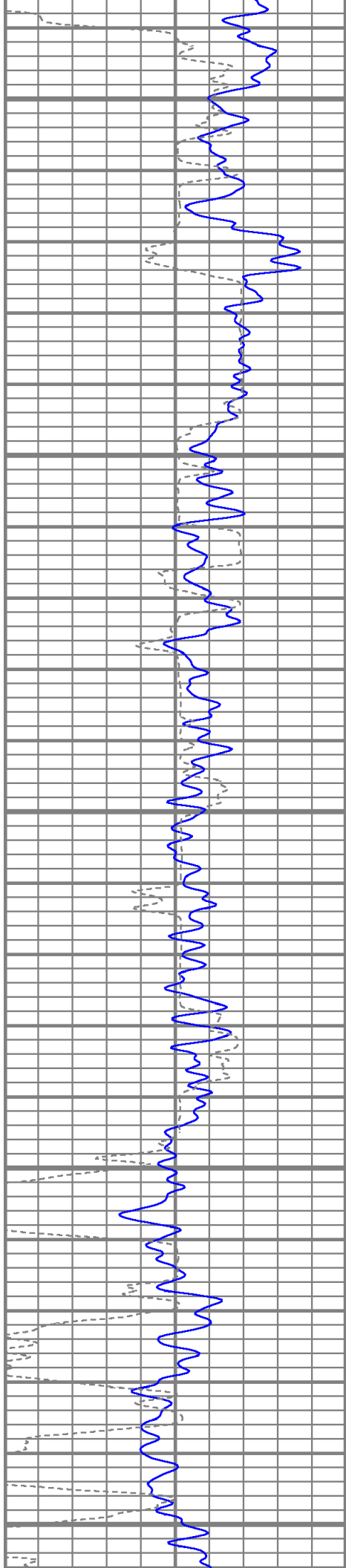
4300

4350

4400

4450





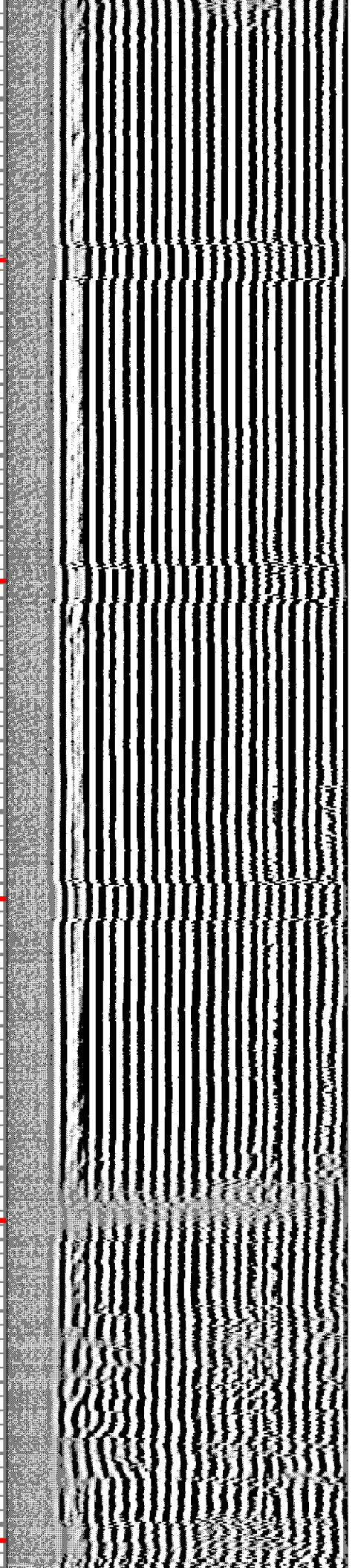
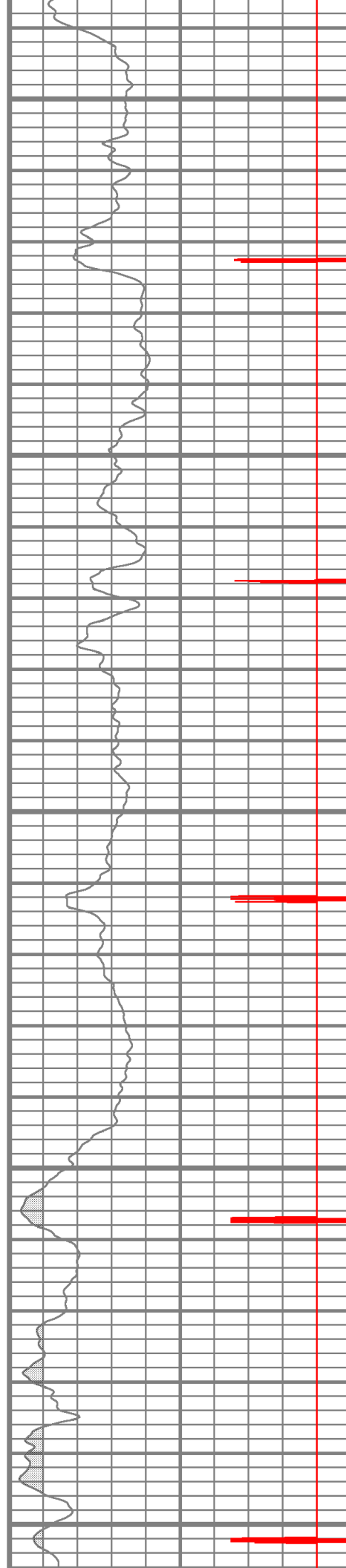
4500

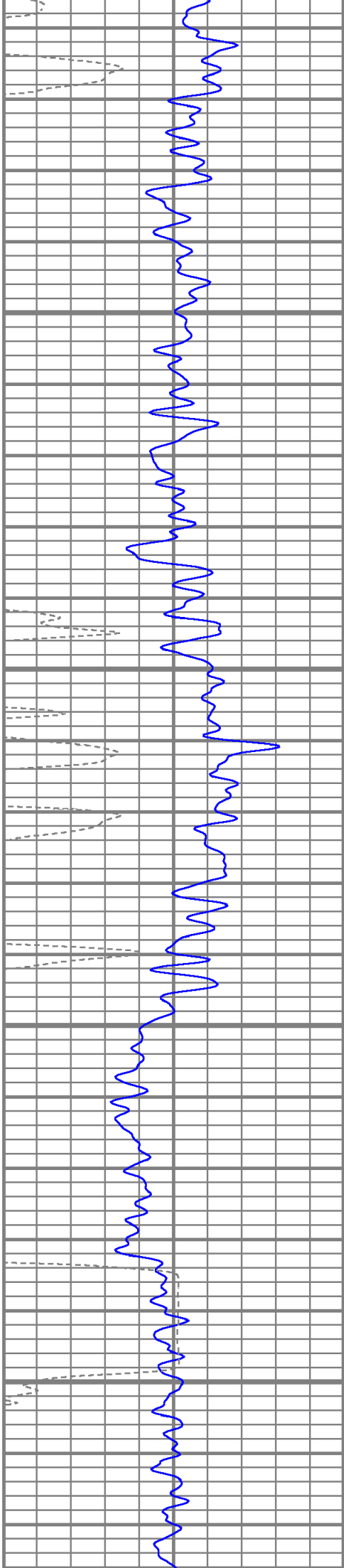
4550

4600

4650

4700



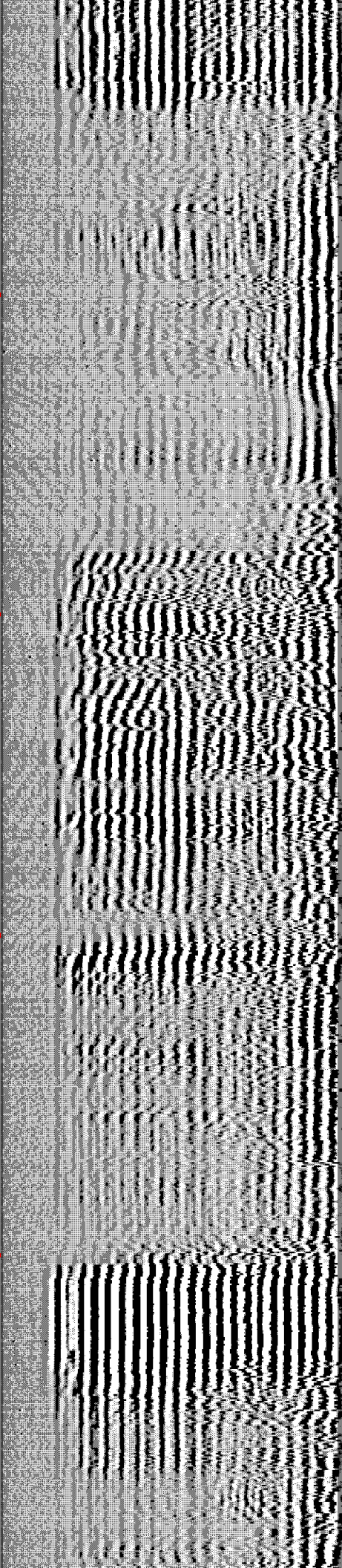
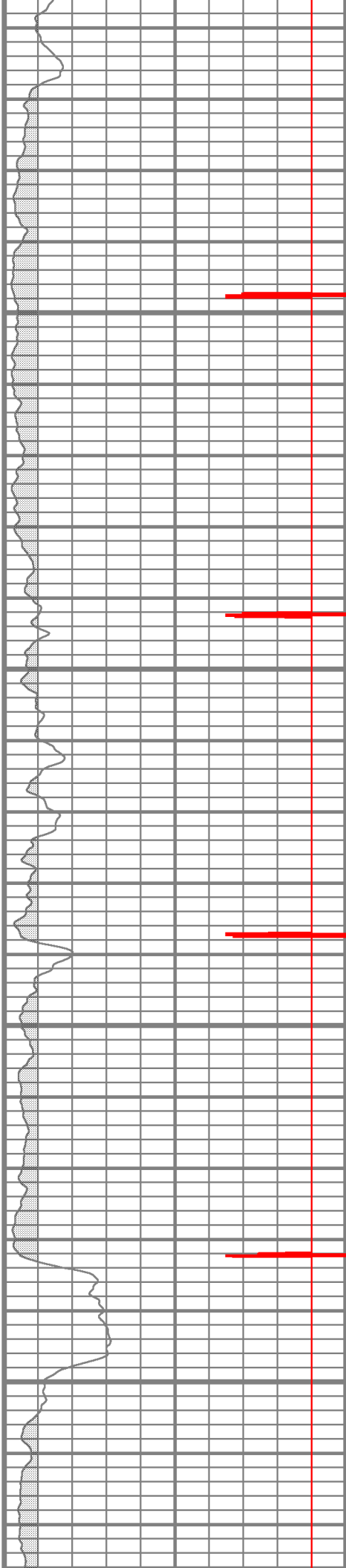


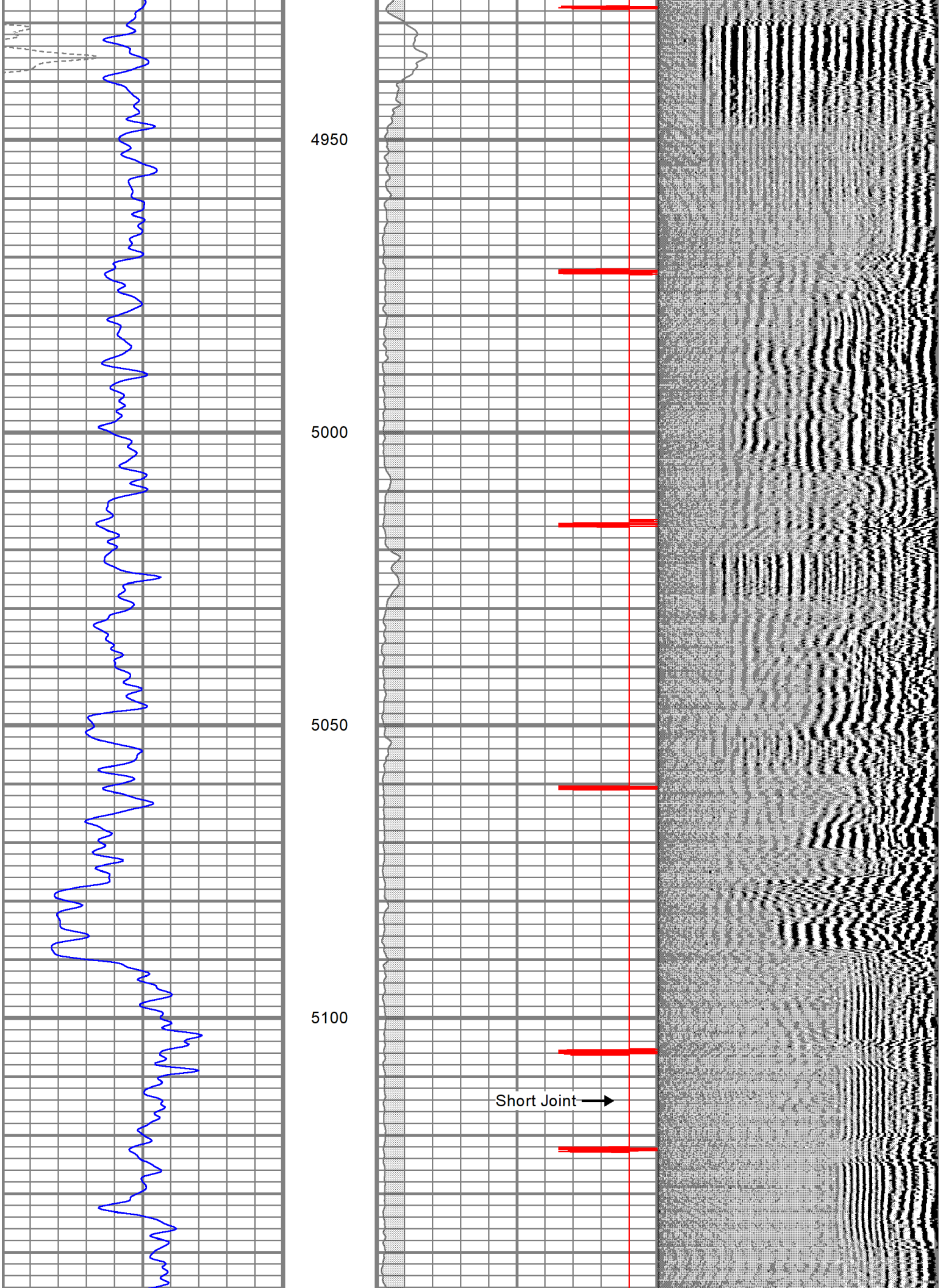
4750

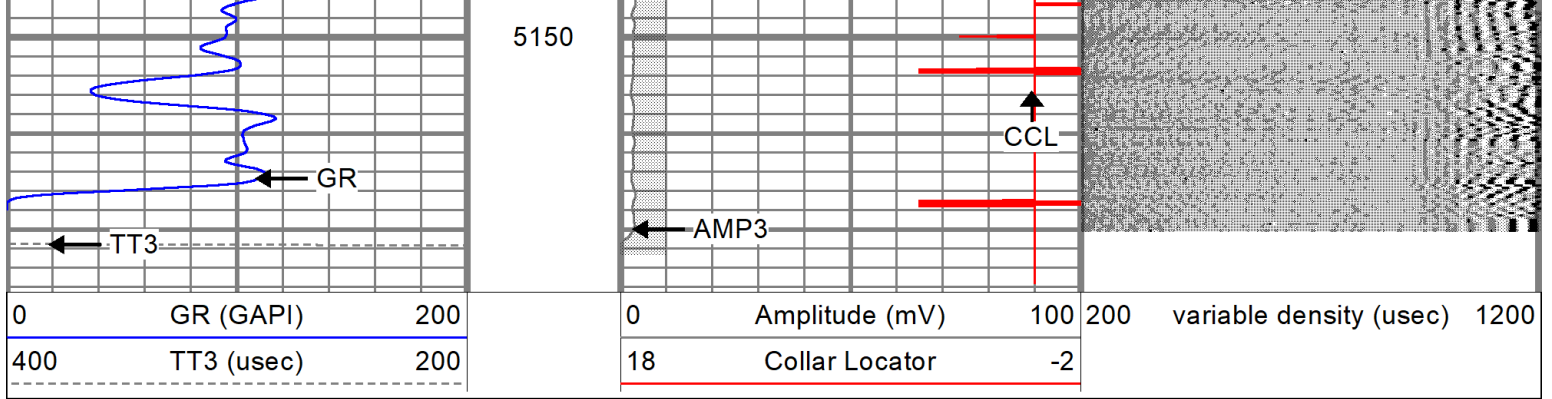
4800

4850

4900







Calibration Report

Database File D:\Weswdab2.db
 Dataset Pathname run3/pass1
 Dataset Creation Sat Nov 02 11:54:23 2002 by Log 6.2_B1

Cement Bond Log Calibration Report

Serial Number: Titan2
 Tool Model: T2
 Performed: Thu Oct 24 11:14:50 2002

Depth: 592.07 ft
 Casing Diameter: 5.5 in

	3' Spacing	5' Spacing	
Signal Zero:	1	1	mV
Calibrated Amplitude:	85	85	mV
Reading at Signal Zero:	0.08	0.0651855	V
Reading in Free Pipe:	2.6	4.223	V

Gain: 33.3333 20.2029
 Offset: -1.66667 -0.316938

Gamma Ray Calibration Report

Serial Number: Titan2
 Tool Model: T2
 Performed: Thu Oct 24 12:48:25 2002

Calibrator Value: 200 GAPI

Background Reading: 54 cps
 Calibrator Reading: 162 cps

Sensitivity: 1.15 GAPI/cps