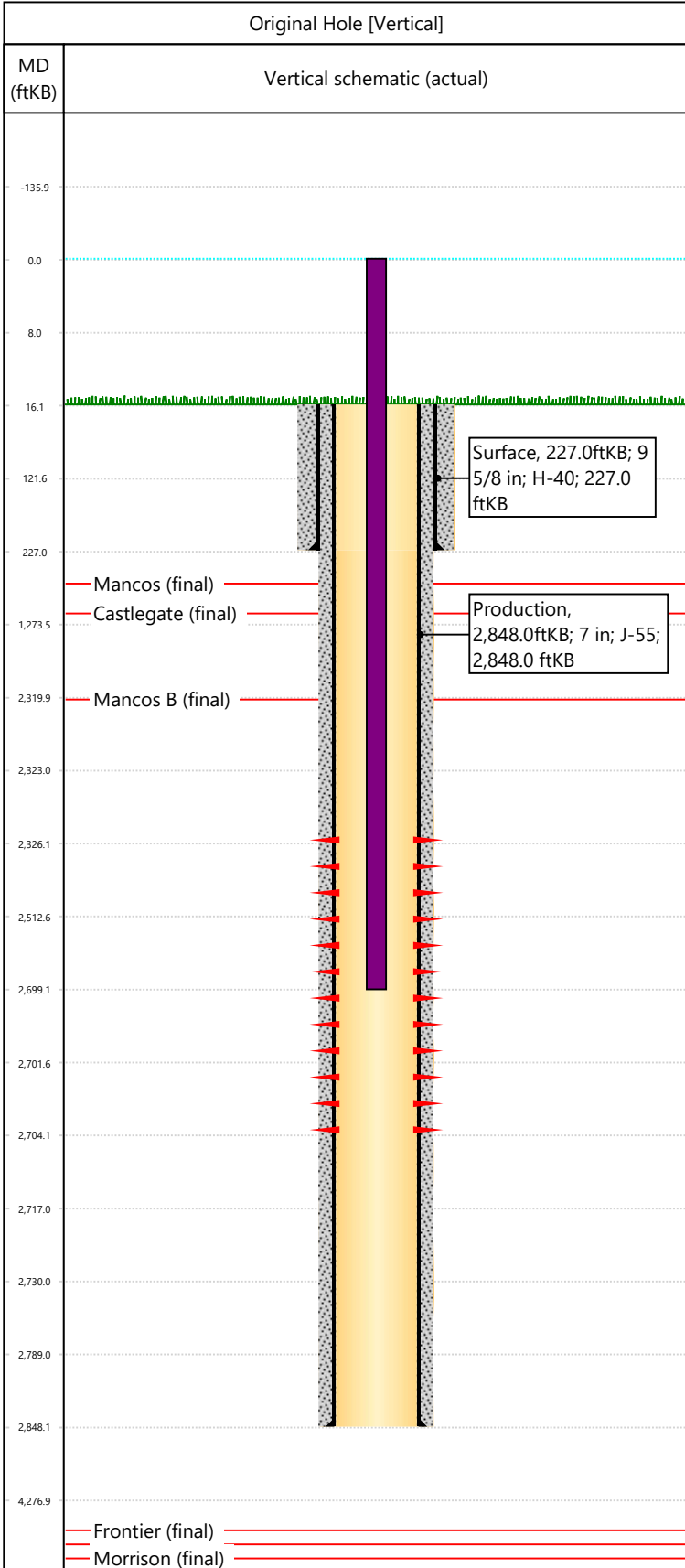


Well Name: CATHEDRAL FEDERAL 18-15

API/UWI 05103089910000	Surface Legal Location 18-02S-101W	Field Name Cathedral	License #	State/Province CO	Well Configuration Type Vertical
Original KB Elevation (ft) 6,328	KB-Tubing Head Distance (ft)	Spud Date 6/28/1983 00:00	Rig Release Date	PBTD (All) (KB)	Total Depth All (TVD) (KB)



Hole Size						
Section Description	Size (in)	Btm Depth (ftKB)				
Surface	12 1/4	227.0				
Section Description	Size (in)	Btm Depth (ftKB)				
Production	8 3/4	2,848.0				
Formations						
Formation Name				Final Top MD (ftKB)		
Mancos				712.0		
Formation Name				Final Top MD (ftKB)		
Castlegate				1,140.0		
Formation Name				Final Top MD (ftKB)		
Dakota				5,160.0		
Formation Name				Final Top MD (ftKB)		
Mancos B				2,320.0		
Formation Name				Final Top MD (ftKB)		
Morrison				5,434.0		
Formation Name				Final Top MD (ftKB)		
Frontier				4,870.0		
Casing Strings						
Csg Des	OD (in)	Wt/Len (lb/ft)	Grade	Set Depth (ftKB)		
Surface	9 5/8	36.00	H-40	227.0		
Production	7	23.00	J-55	2,848.0		
Perforations						
Date	Top (ftKB)	Btm (ftKB)	Zone			
8/11/1983	2326	2704	Mancos B, Original Hole			
Total						
Tubing Strings						
Tubing Description	Run Date	String Length (ft)	Set Depth (ftKB)			
Tubing from Migration	8/11/1983	2,699.00	2,699.0			
Item Des	Icon	Jts	OD (in)	Wt (lb/ft)	Grade	Len (ft)
Tubing			1 1/2			2699
Rod Strings						
Rod Description	Run Date	String Length (ft)	Set Depth (ftKB)			
Item Des	Icon	Jts	OD (in)	Wt (lb/ft)	Grade	Len (ft)
Other In Hole						
Des	Icon	OD (in)	Top (ftKB)	Btm (ftKB)	Run Date	Pull Date
Cement						
Description	Proposed/Actual Run	Type	Top Depth (ftKB)			
Production Casing Cement	Actual	Casing	16.0			
Description	Proposed/Actual Run	Type	Top Depth (ftKB)			
Surface Casing Cement	Actual	Casing	16.0			