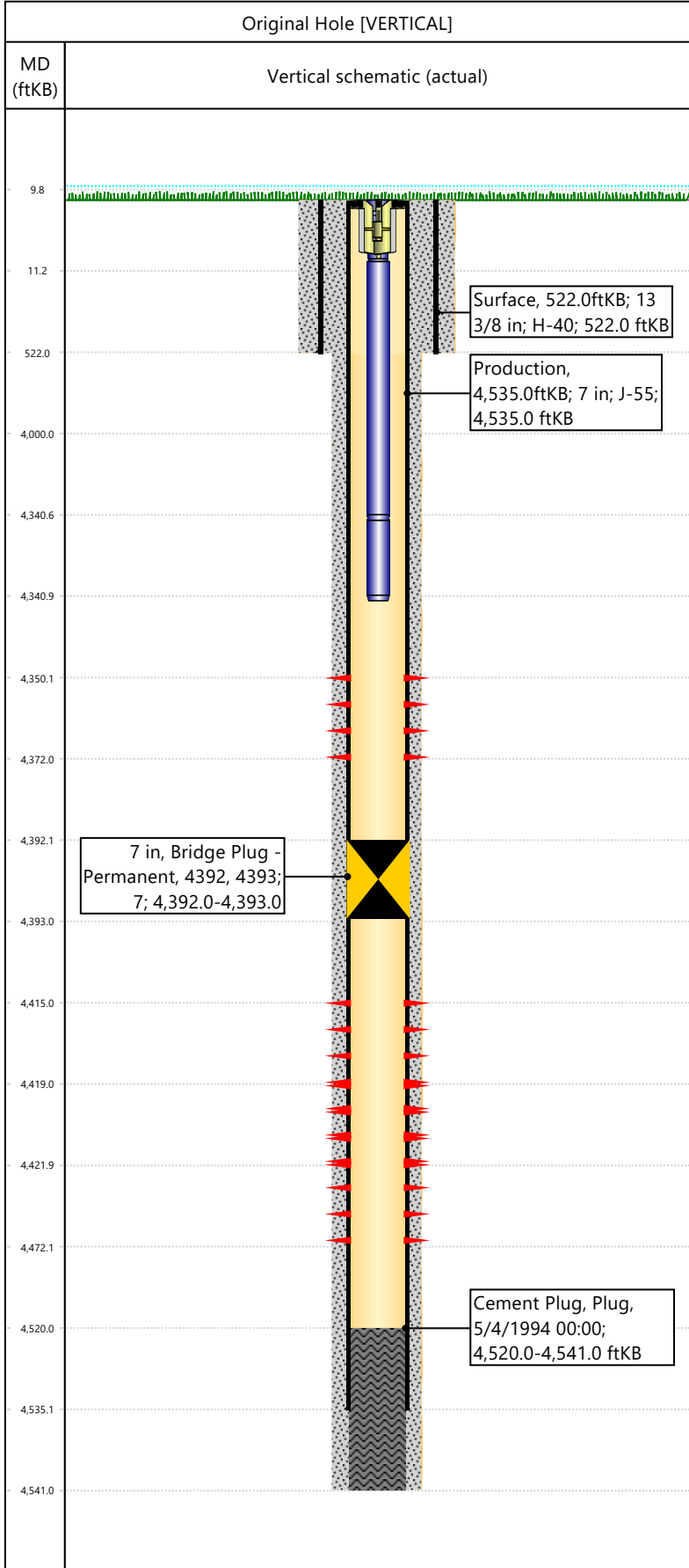


Well Name: DOUGLAS CK UNIT 04

API/UWI 05103050850000	Surface Legal Location 06-03S-101W	Field Name	License #	State/Province CO	Well Configuration Type VERTICAL
Original KB Elevation (ft) 6,181	KB-Tubing Head Distance (ft)	Spud Date 9/16/1948 00:00	Rig Release Date	PBTD (All) (KB)	Total Depth All (TVD) (KB)



Hole Size						
Section Description	Size (in)	Bottom Depth (ftKB)				
Surface	17 1/2	522.0				
Section Description	Size (in)	Bottom Depth (ftKB)				
Production	10	4,541.0				
Formations						
Formation Name	Final Top MD (ftKB)					
Casing Strings						
Csg Des	OD (in)	Wt/Len (lb/ft)	Grade	Set Depth (ftKB)		
Surface	13 3/8	48.00	H-40	522.0		
Production	7	23.00	J-55	4,535.0		
Perforations						
Date	Top (ftKB)	Btm (ftKB)	Zone			
10/6/2003	4350	4372	Dakota, Original Hole			
5/5/1994	4415	4472	Dakota, Original Hole			
6/6/1963	4419	4422	Dakota, Original Hole			
Total						
Tubing Strings						
Tubing Description	Run Date	String Length (ft)	Set Depth (ftKB)			
Tubing - Production	10/7/2003	4,331.00	4,341.0			
Item Des	Icon	Jts	OD (in)	Wt (lb/ft)	Grade	Len (ft)
Tubing Hanger			2 3/8			1
Tubing		238	2 3/8	7.70	J-55	4329.5
Collar			2 3/8			0.5
Rod Strings						
Rod Description	Run Date	String Length (ft)	Set Depth (ftKB)			
Item Des	Icon	Jts	OD (in)	Wt (lb/ft)	Grade	Len (ft)
Other In Hole						
Des	Icon	OD (in)	Top (ftKB)	Btm (ftKB)	Run Date	Pull Date
Bridge Plug - Permanent		7	4392	4393	6/20/1994	
Cement						
Description	Proposed/Actual Run	Type	Top Depth (ftKB)			
Surface Casing Cement	Actual	Casing	10.0			
Description	Proposed/Actual Run	Type	Top Depth (ftKB)			
Production Casing Cement	Actual	Casing	10.0			
Description	Proposed/Actual Run	Type	Top Depth (ftKB)			
Cement Plug	Actual	Plug	4,520.0			