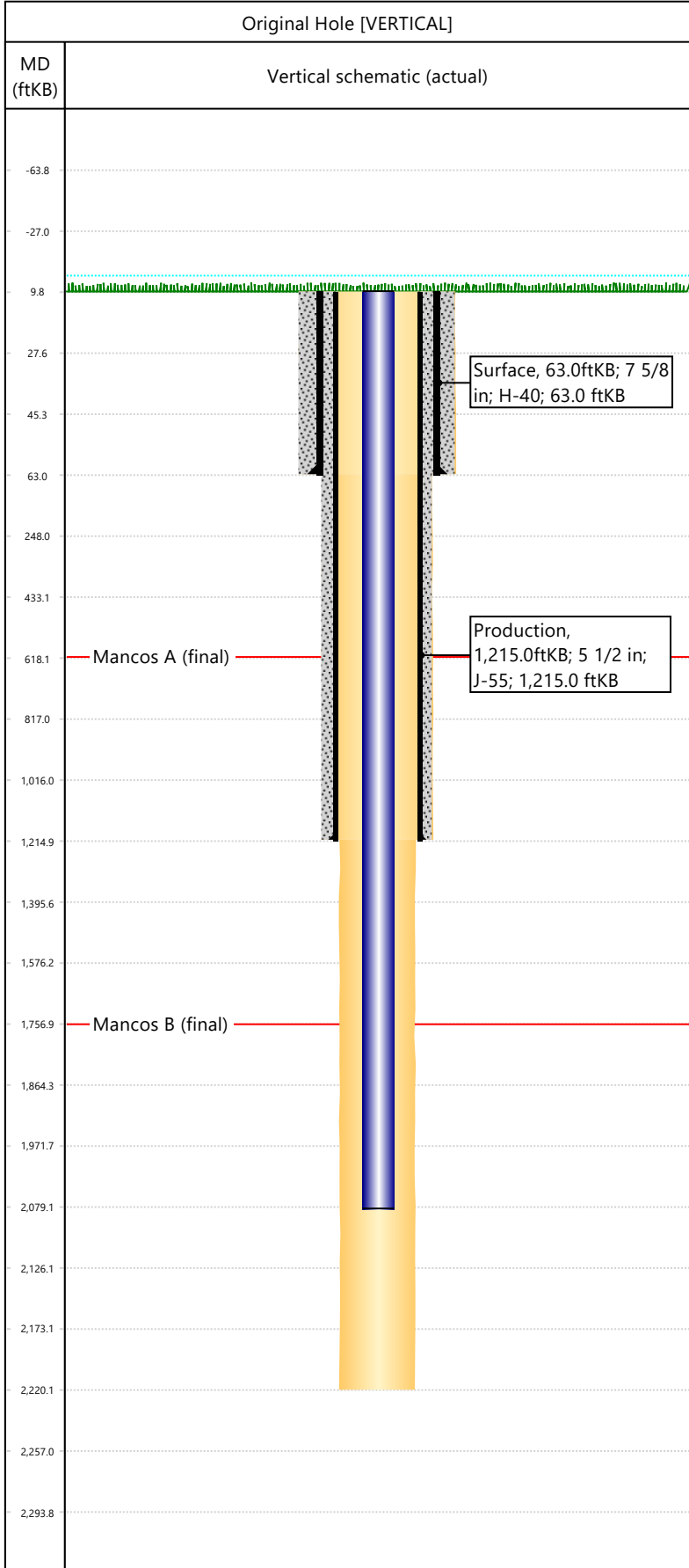


Well Name: DOUGLAS CK UN 14

API/UWI 05103050960000	Surface Legal Location 32-02S-101W	Field Name Douglas Creek	License #	State/Province CO	Well Configuration Type VERTICAL
Original KB Elevation (ft) 6,349	KB-Tubing Head Distance (ft)	Spud Date 9/4/1961 00:00	Rig Release Date	PBTD (All) (KB)	Total Depth All (TVD) (KB)



Hole Size						
Section Description	Size (in)	Bottom Depth (ftKB)				
Surface	9 5/8	63.0				
Section Description	Size (in)	Bottom Depth (ftKB)				
Production	6 3/4	1,215.0				
Section Description	Size (in)	Bottom Depth (ftKB)				
Openhole	4 1/2	2,220.0				
Formations						
Formation Name	Final Top MD (ftKB)					
Mancos A	618.0					
Formation Name	Final Top MD (ftKB)					
Mancos B	1,757.0					
Casing Strings						
Csg Des	OD (in)	Wt/Len (lb/ft)	Grade	Set Depth (ftKB)		
Surface	7 5/8	24.00	H-40	63.0		
Production	5 1/2	14.00	J-55	1,215.0		
Tubing Strings						
Tubing Description	Run Date	String Length (ft)	Set Depth (ftKB)			
Tubing - Production	4/30/1991	2,069.00	2,079.0			
Item Des	Icon	Jts	OD (in)	Wt (lb/ft)	Grade	Len (ft)
Tubing		65	1.9	2.76	J-55	2069
Rod Strings						
Rod Description	Run Date	String Length (ft)	Set Depth (ftKB)			
Item Des	Icon	Jts	OD (in)	Wt (lb/ft)	Grade	Len (ft)
Other In Hole						
Des	Icon	OD (in)	Top (ftKB)	Btm (ftKB)	Run Date	Pull Date
Cement						
Description	Proposed/Actual Run	Type	Top Depth (ftKB)			
Production Casing Cement	Actual	Casing	10.0			
Description	Proposed/Actual Run	Type	Top Depth (ftKB)			
Surface Casing Cement	Actual	Casing	10.0			