

WELL NAME: RED DEER 22-6, API #: 071-08489, INSP. # 716301860

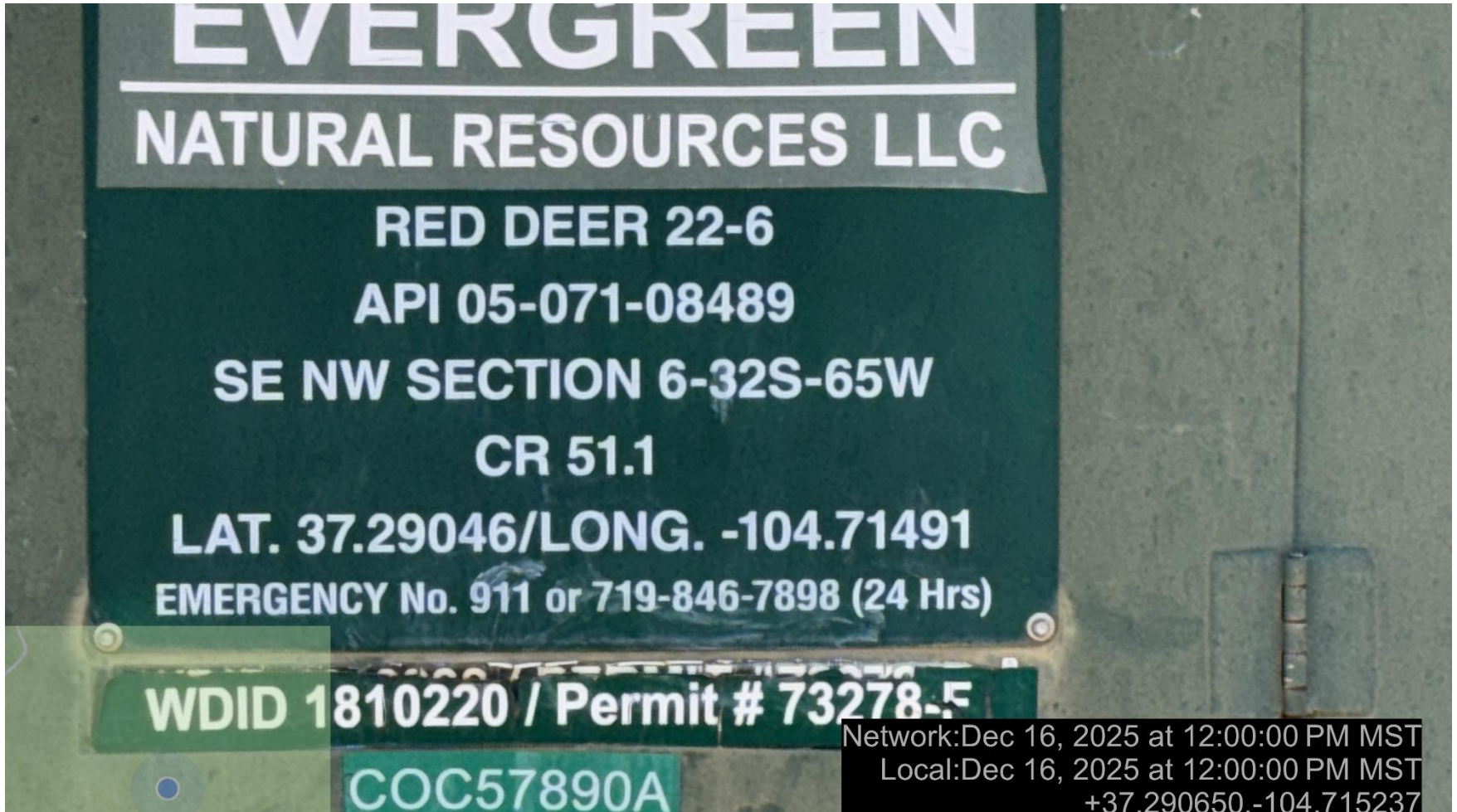


PHOTO 1: WELL SIGN



Network: Dec 16, 2025 at 11:59:20 AM MST
Local: Dec 16, 2025 at 11:59:20 AM MST
+37.290675, -104.715561
Los Animas County

PHOTO 2: LOCATION.



PHOTO 3: WELLHEAD AND EQUIPMENT.

RESOURCES

Contact #

Company	EVERGREEN NATURAL RESOURCES, LLC.			Fed ID#	578901
Meter ID# (Well Name)	Red Deer 22-6			Diff Range	0-100
Tap Location	Up Stream			Atmospheric PSI	11.18
Meter ID#	0101108489			Static Range	0-100
Meter Serial#	2010235			Temp Range	156°
DP Cal Range	0-100 HzO			Static Cal Range	0-111
Section/Township/Range	6	32S	65W	County & State	Las Anim
Meter Calibration (Date)	Gas Sample (Date)	Gravity	BTU	Run Size/Pipe Diamter	Orifice Size
11/14/22	11/14/22	.564	1003	2.067	.5
11/29/23	11/29/23	.56	1010	2.067	.5
12-16-24	12-16-24	.56	1008	2.067	.5

Network: Dec 16, 2025 at 12:00:37 PM MST
 Local: Dec 16, 2025 at 12:00:37 PM MST
 +37.290648, -104.715264
 Las Animas County

PHOTO 4: ANNUAL GAS METER CALIBRATION IS DUE TODAY 12-16-2025.