

DATE:	September 2025
DESIGNED BY:	B. Nelson
DRAWN BY:	J. Woffinden



Tasman, Inc.
 4725 Independence St.
 Wheat Ridge, CO 80033

PDC Energy, Inc. – 69175
Cornish 17-11
 NWNW Sec. 17-T6N-R63W
 Weld County, Colorado

Site Location Map

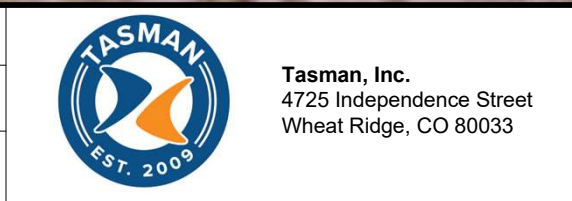
Figure
1



DATE: September 9, 2025

DESIGNED BY: J. Whritenour

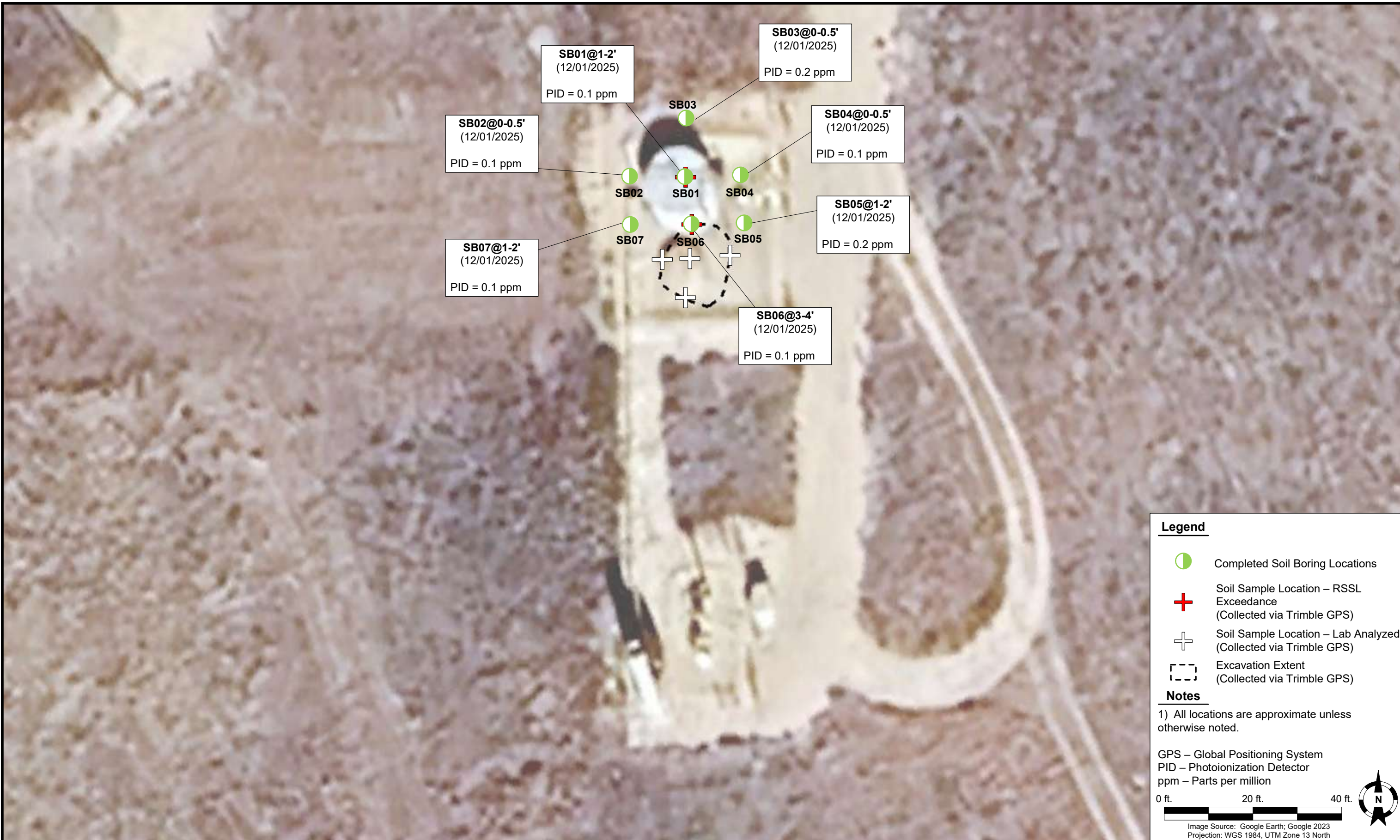
DRAWN BY: L. Reed






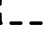
PDC Energy, Inc – 69175
Cornish 17-11 Tank Battery
 NWNW, Section 17, Township 6 North, Range 63 West
 Weld County, Colorado

SOIL SAMPLE LOCATION MAP (TANK BATTERY)

FIGURE 2



Legend

-  Completed Soil Boring Locations
-  Soil Sample Location – RSSL Exceedance (Collected via Trimble GPS)
-  Soil Sample Location – Lab Analyzed (Collected via Trimble GPS)
-  Excavation Extent (Collected via Trimble GPS)


Notes

1) All locations are approximate unless otherwise noted.

GPS – Global Positioning System
 PID – Photoionization Detector
 ppm – Parts per million

0 ft. 20 ft. 40 ft.

Image Source: Google Earth; Google 2023
 Projection: WGS 1984, UTM Zone 13 North



DATE: December 1, 2025

DESIGNED BY: J. Whritenour

DRAWN BY: R. Schmidt



Tasman, Inc.
 4725 Independence Street
 Wheat Ridge, CO 80033

**PDC Energy, Inc – 69175
 Cornish 17-11 Tank Battery**
 NWNW, Section 17, Township 6 North, Range 63 West
 Weld County, Colorado

COMPLETED SOIL BORING
 LOCATION MAP

FIGURE
 3

TABLE 1
FIELD DATA SUMMARY TABLE
PDC ENERGY, INC. - 69175
CORNISH 17-11 TANK BATTERY, WELD COUNTY, COLORADO
REM # 42205



Sample ID	Sample Date	Depth (ft. bgs)	GPS Data ¹		PDOP Value	VOC Concentration ² (ppm)
			Latitude	Longitude		
AST01@0-6"	9/8/2025	0-0.5	40.493511	-104.470182	0.8	0.1
MH01@0-6"	9/8/2025	0-0.5	40.493236	-104.470121	0.8	0.0
FLARE01@0-6"	9/8/2025	0-0.5	40.493190	-104.470214	0.8	0.0
FLARE02@0-6"	9/8/2025	0-0.5	40.493221	-104.470216	0.8	0.2
PWV01-N@2'	9/9/2025	2	40.493482	-104.470177	0.8	0.1
PWV01-E@2'	9/9/2025	2	40.493462	-104.470146	0.8	0.0
PWV01-S@2'	9/9/2025	2	40.493436	-104.470183	0.8	0.0
PWV01-W@2'	9/9/2025	2	40.493459	-104.470201	0.8	0.0
PWV01-B@4'	9/9/2025	4	40.493460	-104.470179	NC	0.0
SEP01-FL@2'	9/9/2025	2	40.493226	-104.470175	0.8	0.0
SEP01-DL@2'	9/9/2025	2	40.493265	-104.470175	0.8	1.4
BKG01@0-6" ^(A)	9/12/2025	0.5	40.494692	-104.469609	0.7	0.3
BKG01@2" ^(A)	9/12/2025	2	40.494692	-104.469609	0.7	0.5
BKG01@4" ^(A)	9/12/2025	4	40.494692	-104.469609	0.7	0.6
BKG02@0-6" ^(A)	9/12/2025	0.5	40.494836	-104.469311	0.8	0.7
BKG02@2" ^(A)	9/12/2025	2	40.494836	-104.469311	0.8	0.6
BKG02@4" ^(A)	9/12/2025	4	40.494836	-104.469311	0.8	0.5

Notes:

1. Global Positioning System (GPS) data is provided in decimal degrees using North American Datum (NAD) 83 UTM Zone 13 North.

2. Volatile organic compound (VOC) concentrations are measured in the field using a photoionization detector (PID).

A = Background samples collected from CORNISH 14-8 FLOWLINE (REM#42091)

PDOP = Position Dilution of Precision

ppm = Parts per million

ft. = Feet

bgs = Below ground surface

NC = Not collected

TABLE 2
SUMMARY OF VOLATILE ORGANIC SOIL CHEMISTRY DATA
PDC ENERGY, INC. - 69175
CORNISH 17-11 TANK BATTERY, WELD COUNTY, COLORADO
REM # 42205



Sample ID	Sample Date	Depth (ft. bgs)	Benzene (mg/kg)	Toluene (mg/kg)	Ethyl-Benzene (mg/kg)	Xylenes (mg/kg)	1,2,4-Trimethyl-Benzene (mg/kg)	1,3,5-Trimethyl-Benzene (mg/kg)	Naphthalene (mg/kg)	TPH (mg/kg)	TPH GRO (mg/kg)	TPH DRO (mg/kg)	TPH ORO (mg/kg)
ECMC Table 915-1 Limits (Residential SSL)			1.2	490	5.8	58	30	27	2	500	500**		
ECMC Table 915-1 Limits (Protection of Groundwater SSL)			0.0026	0.69	0.78	9.9	0.0081	0.0087	0.0038	500	500**		
AST01@0-6"	9/8/2025	0-0.5	<0.0012	<0.0023	<0.0023	<0.0023	<0.0023	<0.0023	<0.0024	786	<0.23	337	449
PWV01-B@4'	9/9/2025	4	<0.0010	<0.0021	<0.0021	<0.0021	<0.0021	<0.0021	<0.0021	7.64	<0.21	<4.3	7.64
PWV01-N@2'	9/9/2025	2	<0.0011	<0.0021	<0.0021	<0.0021	<0.0021	<0.0021	<0.0021	560	<0.21	230	330
SEP01-DL@2'	9/9/2025	2	<0.0010	<0.0021	<0.0021	<0.0021	<0.0021	<0.0021	<0.0020	497	<0.21	202	295
SEP01-FL@2'	9/9/2025	2	<0.0011	<0.0021	<0.0021	<0.0021	<0.0021	<0.0021	<0.0020	37.0	<0.21	12.9	24.1

Notes:

- 1. Bold** values exceed the ECMC Table 915-1 limit(s).
- Red & blue highlighted soil analytical values indicate an exceedance of the referenced soil screening level (SSL).
- ** Summation of GRO+DRO+ORO must be less than 500 mg/kg.

ECMC = Energy and Carbon Management Commission

(<) = Analytical result is less than the indicated laboratory reporting limit.

TPH-GRO = Total petroleum hydrocarbons - gasoline range organics

TPH-DRO = Total petroleum hydrocarbons - diesel range organics

TPH-ORO = Total petroleum hydrocarbons - oil range organics

mg/kg = Milligrams per kilogram

ft. = Feet

bgs = Below ground surface

RP = Analytical results pending

TABLE 3
SUMMARY OF POLYCYCLIC AROMATIC HYDROCARBON SOIL CHEMISTRY DATA
PDC ENERGY, INC. - 69175
CORNISH 17-11 TANK BATTERY, WELD COUNTY, COLORADO
REM # 42205



Sample ID	Sample Date	Depth (ft. bgs)	Acenaphthene (mg/kg)	Anthracene (mg/kg)	Benzo (a) Anthracene (mg/kg)	Benzo (a) Pyrene (mg/kg)	Benzo (b) Fluoranthene (mg/kg)	Benzo (k) Fluoranthene (mg/kg)	Chrysene (mg/kg)	Dibenzo (a,h) Anthracene (mg/kg)	Fluoranthene (mg/kg)	Fluorene (mg/kg)	Indeno (1,2,3-cd) Pyrene (mg/kg)	Pyrene (mg/kg)	1-Methyl - Naphthalene (mg/kg)	2-Methyl- Naphthalene (mg/kg)
ECMC Table 915-1 Limits (Residential SSL)			360	1800	1.1	0.11	1.1	11	110	0.11	240	240	1.1	180	18	24
ECMC Table 915-1 Limits (Protection of Groundwater SSL)			0.55	5.8	0.011	0.24	0.3	2.9	9	0.096	8.9	0.54	0.98	1.3	0.006	0.019
AST01@0-6"	9/8/2025	0-0.5	<0.0048	<0.0048	<0.0060	<0.0048	<0.0048	<0.0048	<0.0048	<0.0048	<0.0048	<0.0048	<0.0048	<0.0048	<0.0048	<0.0048
PWV01-B@4'	9/9/2025	4	<0.0043	<0.0043	<0.0054	<0.0043	<0.0043	<0.0043	<0.0043	<0.0043	<0.0043	<0.0043	<0.0043	<0.0043	<0.0043	<0.0043
PWV01-N@2'	9/9/2025	2	<0.0043	<0.0043	<0.0053	<0.0043	<0.0043	<0.0043	<0.0043	<0.0043	<0.0043	<0.0043	<0.0043	<0.0043	<0.0043	<0.0043
SEP01-DL@2'	9/9/2025	2	<0.0040	<0.0040	<0.0050	<0.0040	<0.0040	<0.0040	<0.0040	<0.0040	<0.0040	<0.0040	<0.0040	<0.0040	<0.0040	<0.0040
SEP01-FL@2'	9/9/2025	2	<0.0040	<0.0040	<0.0050	<0.0040	<0.0040	<0.0040	<0.0040	<0.0040	<0.0040	<0.0040	<0.0040	<0.0040	<0.0040	<0.0040

Notes:

1. **Bold** values exceed the ECMC Table 915-1 limit(s).
2. Red & blue highlighted soil analytical values indicate an exceedance of the referenced soil screening level (SSL).
3. * Indicates laboratory minimum detection limit in excess of SSL.

ECMC = Energy and Carbon Management Commission

(<) = Analytical result is less than the indicated laboratory reporting limit.

mg/kg = Milligrams per kilogram

ft. = Feet

bgs = Below ground surface

RP = Analytical results pending

TABLE 4
SUMMARY OF SOIL SUITABILITY FOR RECLAMATION
PDC ENERGY, INC. - 69175
CORNISH 17-11 TANK BATTERY, WELD COUNTY, COLORADO
REM # 42205



Sample ID	Sample Date	Depth (ft. bgs)	pH (Standard Units)	EC (mmhos/cm)	SAR (Standard Units)	Boron (mg/L)
ECMC Table 915-1 Soil Suitability Limits			6 - 8.3	<4	<6	2
AST01@0-6"	9/8/2025	0-0.5	6.60	0.34	0.0405	<0.50
PWV01-B@4'	9/9/2025	4	8.28	0.52	1.75	<0.50
PWV01-N@2'	9/9/2025	2	6.15	0.095	0.0632	<0.50
SEP01-DL@2'	9/9/2025	2	7.32	0.61	0.875	<0.50
SEP01-FL@2'	9/9/2025	2	7.47	0.50	0.449	<0.50
BKG01@0-6" ^(A)	9/12/2025	0.5	7.33	0.22	0.100	<0.50
BKG01@2" ^(A)	9/12/2025	2	8.09	3.6	2.48	<0.50
BKG01@4" ^(A)	9/12/2025	4	7.62	4.5	2.74	<0.50
BKG02@0-6" ^(A)	9/12/2025	0.5	7.34	0.11	0.128	<0.50
BKG02@2" ^(A)	9/12/2025	2	8.04	0.24	0.215	<0.50
BKG02@4" ^(A)	9/12/2025	4	6.92	0.24	0.209	<0.50
Maximum Background Concentration			-	-	-	-

Notes:

1. **Bold** faced values exceed the ECMC Table 915-1 limit(s), but are within background concentrations.
2. **Bold** faced values exceed the ECMC Table 915-1 limit(s) and native background concentrations.
3. Brown highlighted soil analytical values indicate a regulatory exceedance.

A = Background samples collected from CORNISH 14-8 FLOWLINE (REM#42091)

ECMC = Energy and Carbon Management Commission

(<) = Analytical result is less than the indicated laboratory reporting limit.

mg/L = Milligrams per liter

ft. = Feet

bgs = Below ground surface

NA = Not analyzed

EC = Electrical conductivity

SAR = Sodium adsorption ratio

mmhos/cm = Millimohs per centimeter

RP = Analytical results pending

TABLE 5
SUMMARY OF METALS IN SOIL CHEMISTRY DATA
PDC ENERGY, INC. - 69175
CORNISH 17-11 TANK BATTERY, WELD COUNTY, COLORADO
REM # 42205



Sample ID	Sample Date	Depth (ft. bgs)	Arsenic (mg/kg)	Barium (mg/kg)	Cadmium (mg/kg)	Chromium (VI) ⁶ (mg/kg)	Copper (mg/kg)	Lead (mg/kg)	Nickel (mg/kg)	Selenium (mg/kg)	Silver (mg/kg)	Zinc (mg/kg)
ECMC Table 915-1 Limits (Residential SSL)			0.68	15000	71	0.3	3100	400	1500	390	390	23000
ECMC Table 915-1 Limits (Protection of Groundwater SSL)			0.29	82	0.38	0.00067	46	14	26	0.26	0.8	370
AST01@0-6"	9/8/2025	0-0.5	1.8	23.6	0.10	<0.47	3.1	4.6	2.8	<0.23	<0.056	13.8
PWV01-B@4'	9/9/2025	4	2.4	33.0	0.065	<0.42	2.8	3.5	2.8	<0.21	<0.052	11.1
PWV01-N@2'	9/9/2025	2	1.9	43.8	0.068	<0.44	2.9	3.8	2.9	<0.20	<0.050	12.2
SEP01-DL@2'	9/9/2025	2	2.0	42.1	0.29	<0.41	4.3	4.0	3.4	<0.19	<0.048	13.5
SEP01-FL@2'	9/9/2025	2	2.2	34.1	0.063	<0.45	2.7	3.6	2.8	<0.20	<0.050	10.5
BKG01@0-6 ^(A)	9/12/2025	0.5	12.1	95.0	0.22	<0.40	7.7	8.8	6.6	0.24	<0.038	19.2
BKG01@2 ^(A)	9/12/2025	2	6.7	169	0.20	<0.44	8.3	11.2	10.1	0.26	<0.046	30.1
BKG01@4 ^(A)	9/12/2025	4	3.9	119	0.24	<0.45	5.6	7.6	7.3	0.21	<0.036	20.8
BKG02@0-6 ^(A)	9/12/2025	0.5	2.1	33.4	0.10	<0.40	3.4	5.0	3.1	0.17	<0.037	12.8
BKG02@2 ^(A)	9/12/2025	2	3.1	51.5	0.071	<0.40	3.6	4.2	4.1	<0.19	<0.047	13.3
BKG02@4 ^(A)	9/12/2025	4	3.1	67.5	0.098	<0.43	3.8	4.8	4.4	<0.13	<0.033	15.3
1.25x Maximum Background Concentration			15.1	-	-	-	-	-	-	-	-	-

Notes:

- 1. Bold** faced values exceed the ECMC Table 915-1 limit(s), but are within 1.25x background concentrations.
 - 2. Bold** faced values exceed the ECMC Table 915-1 limit(s) and native background concentrations.
 - Red & blue highlighted soil analytical values indicate an exceedance of the referenced soil screening level (SSL).
 - Reporting limit used for 1.25 multiplier when all background results for a specific metal are non-detect.
 - * Indicates laboratory minimum detection limit in excess of SSL.
 - Compound falls within the ECMC Table 915-1 footnote 9.
- A = Background samples collected from CORNISH 14-8 FLOWLINE (REM#42091)
Background samples collected from CORNISH 14-8 FLOWLINE (REM#42091)
ECMC = Energy & Carbon Management Commission
(<) = Analytical result is less than the indicated laboratory reporting limit.
mg/kg = Milligrams per kilogram
ft. = Feet
bgs = Below ground surface
RP = Analytical results pending

Chevron Rockies Business Unit

Field Qualitative Criteria for ECMC Reporting Associated with the Discovery of Potentially Impacted Material

If answered **Yes** to any of the questions listed below, this may suggest the presence of potentially impacted materials as outlined in ECMC Rule 912. Out of an abundance of caution, a “Yes” response will be reported to the ECMC within 24 hours after discovery, regardless of laboratory results. **Immediately notify the RBU Remediation Team.** Include a copy of this Field Qualitative Spill Criteria Checklist in the field Report.

Please answer the following questions when on-site:

1. Is there visible petroleum hydrocarbon staining in the soil? No
2. Does the soil sample from the stained area have a petroleum odor? No
3. Is there a petroleum hydrocarbon sheen on the nearby surface water? No
4. Does there appear to be a sheen of the surface of accumulated groundwater or seeps within the excavation indicative of petroleum? No
5. Is stained soil in contact with groundwater? No

Please Include relevant photos of the site conditions for items 1-5.

Location name: Cornish 17-11 Tank Battery

Please Circle Facility Type: Production Facility




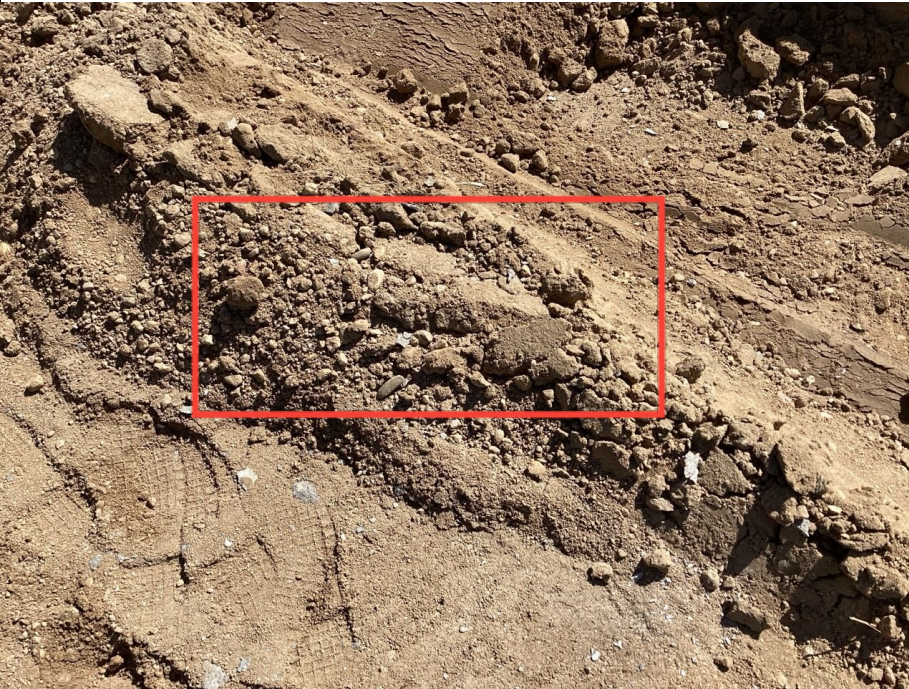
Photographic Log



Equipment ID: AST01@0-6"			Equipment Type:			Equipment ID: MH01@0-6"			Equipment Type:		
Material:		Volume:		Contents:		Material:		Volume:		Contents:	
Notes/Conditions:						Notes/Conditions:					



Photographic Log

					
Equipment ID: FLARE01@0-6"		Equipment Type:	Equipment ID: Flare02@0-6"		Equipment Type:
Material:	Volume:	Contents:	Material:	Volume:	Contents:
Notes/Conditions:			Notes/Conditions:		



Photographic Log



Equipment ID:		Equipment Type:	
Material:	Volume:	Contents:	
Notes/Conditions: PWV01-N@2, PWV01-E@2', PWV01-S@2', PWV01-W@2', PWV01-B@4'.... Facing North			

Equipment ID: SEP01-FL@2'		Equipment Type:	
Material:	Volume:	Contents:	
Notes/Conditions:			



Photographic Log



Equipment ID: SEP01-DL@2'		Equipment Type:		Equipment ID:		Equipment Type:	
Material:	Volume:	Contents:		Material:	Volume:	Contents:	
Notes/Conditions:				Notes/Conditions:			