



**RADIAL BOND
GAMMA RAY
COLLAR LOG**

Company CIVITAS
Well DUTCH LAKE 22-34H
Field WATTENBERG
County WELD
State CO
Country U.S.A

Company CIVITAS
Well DUTCH LAKE 22-34H
Field WATTENBERG
County WELD
State CO
Country U.S.A

Location: SE/SE
API #: 05-123-33541
LAT: 40.438907 LONG:-104.301794
SEC 34 TWP 6N RGE 62W

Permanent Datum GL Elevation 4648'
Log Measured From KB 24'
Drilling Measured From KB 24'

Other Services
N/A
Elevation
K.B. 4672'
D.F. 4671'
G.L. 4648'

Date NOVEMBER 5 2025

Run Number 1
Depth Driller 10400'
Depth Logger 5350'
Bottom Logged Interval 5346'
Top Log Interval SURFACE
Open Hole Size 8.625'
Type Fluid WATER

Density / Viscosity ---
Max. Recorded Temp. NOT RECORDED
Estimated Cement Top ---
Time Well Ready ON ARRIVAL
Time Logger on Bottom ---
Equipment Number 3812
Location PLATTEVILLE
Recorded By MICHAEL RAMSEY
Witnessed By JIM ADAMS

Borehole Record				Tubing Record			
Run Number	Bit	From	To	Size	Weight	From	To
Casing Record							
Surface String		9.625"		36#		SURFACE	880'
Prot. String							
Production String		7"		26#		SURFACE	6660'
Liner		4.5"		11.6#		5654'	10390'

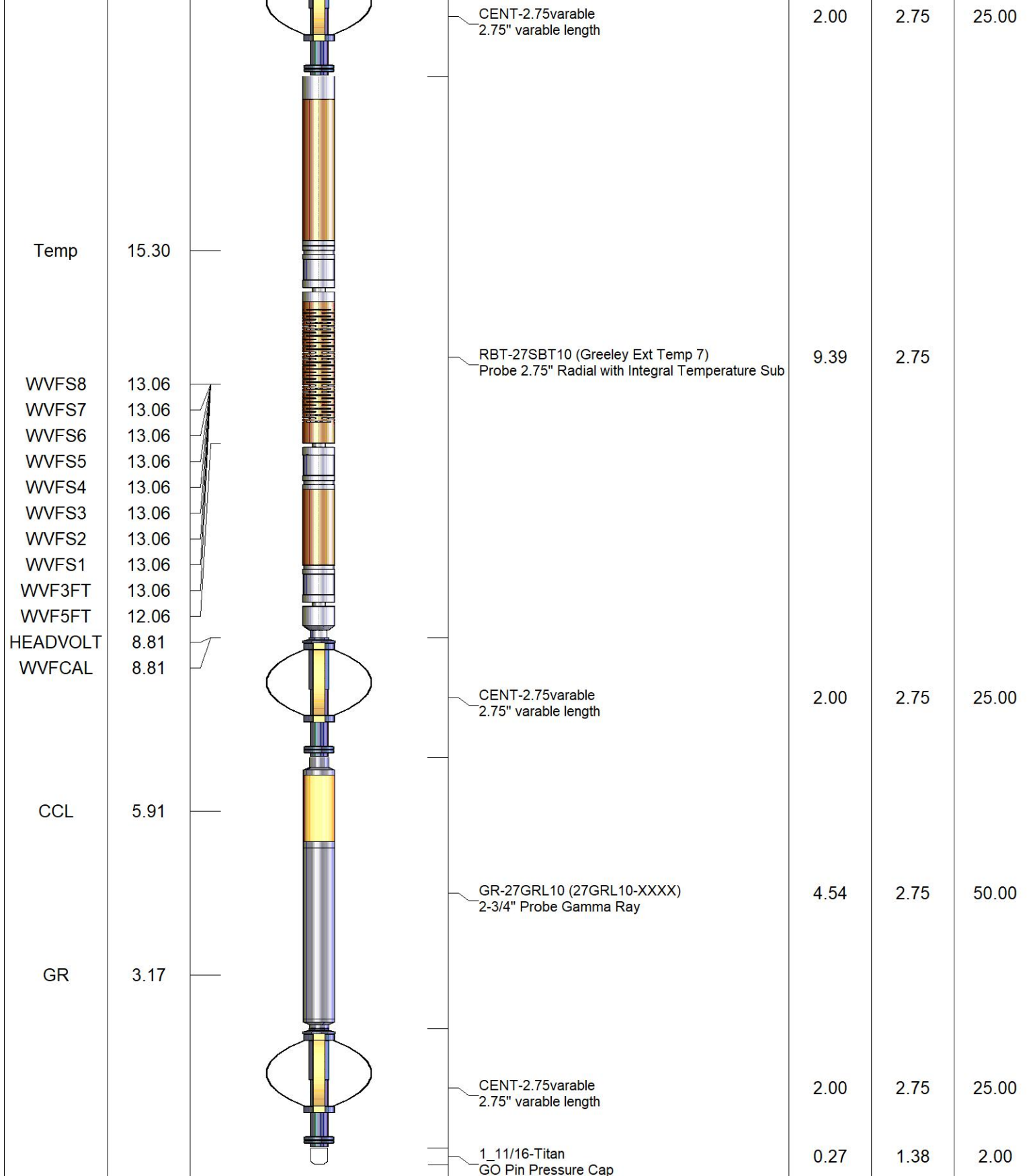
<<< Fold Here >>>

All interpretations are opinions based on inferences from electrical or other measurements and we cannot and do not guarantee the accuracy or correctness of any interpretation, and we shall not, except in the case of gross or willful negligence on our part, be liable or responsible for any loss, costs, damages, or expenses incurred or sustained by anyone resulting from any interpretation made by any of our officers, agents or employees. These interpretations are also subject to our general terms and conditions set out in our current Price Schedule.

Comments

**RAN CBL TO VERIFY CEMENT BOND
WELL LOADED ON ARRIVAL
LOG CORRELATED TO KB 24'
LOG RAN UNDER 500PSI SURFACE INDUCED PRESSURE
VOID INDICATED IN ANNULUS 130' - SURFACE**

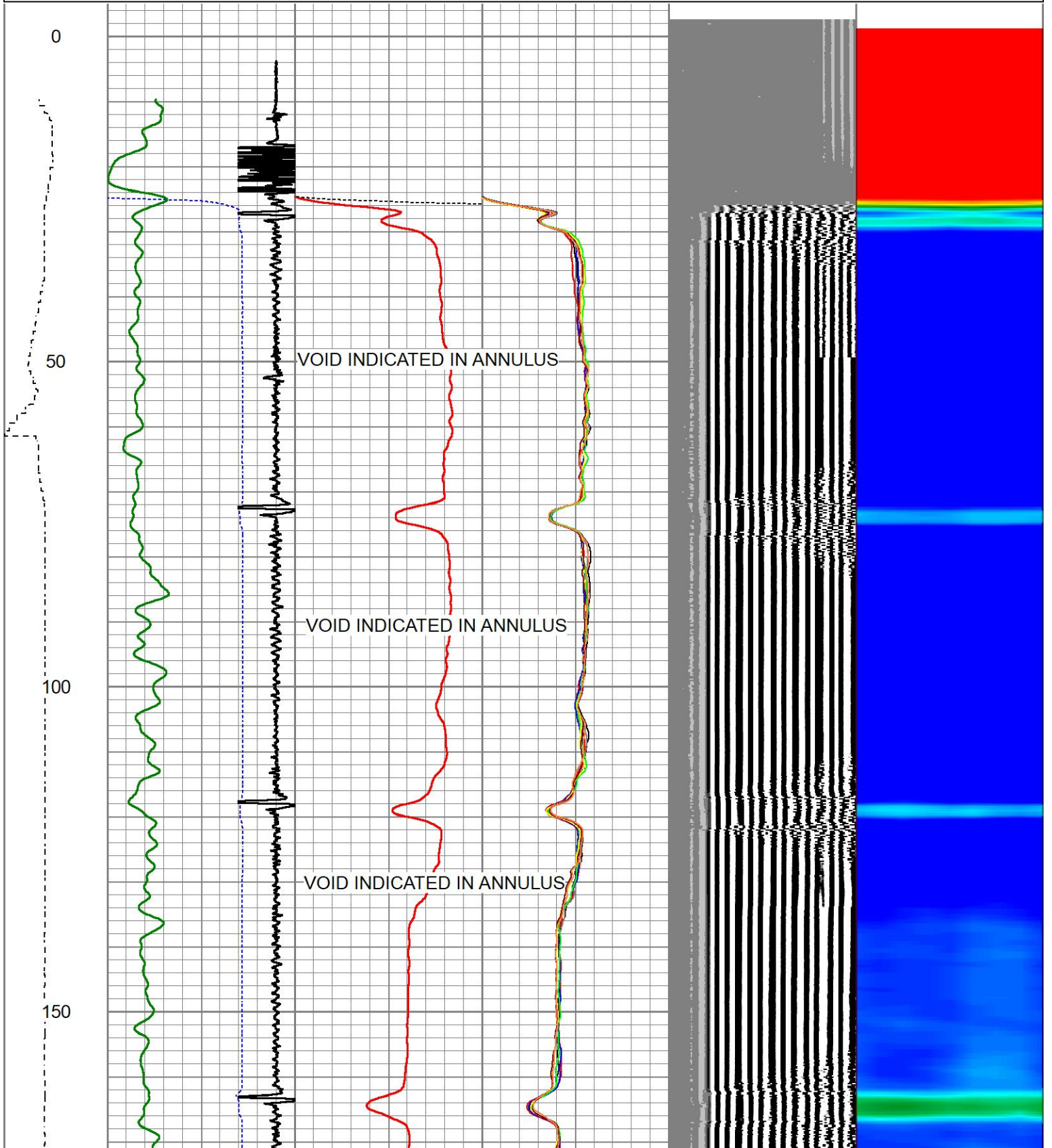
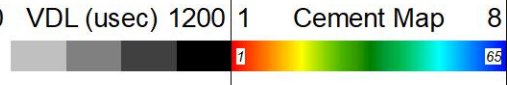
Sensor	Offset (ft)	Schematic	Description	Length (ft)	O.D. (in)	Weight (lb)
			CHD-1_11/16_Cablehead 1 11/16 Cablehead	1.00	1.68	5.00



Dataset: dutch lake 22-34h rbl civitas .db: field/well/run1/pass5
 Total length: 21.20 ft
 Total weight: 132.00 lb
 O.D.: 2.75 in

Database File dutch lake 22-34h rbl civitas .db
 Dataset Pathname pass5
 Presentation Format ips_rbtcolorcivitas
 Dataset Creation Wed Nov 05 12:28:08 2025
 Charted by Depth in Foot scaled 1:240

LSPD	650	TT (usec)	150	0	AMP (mV)	100	0	AMPS1	150	200	VDL (usec)	1200	1	Cement Map	8
(ft/min)	-9	CCL	1	0	Amplified Amplitude	0	0	AMPS2	150						
0	250	0	GR (GAPI)	200	0	(mV)	20	0	AMPS3	150					
		200	GR (GAPI)	400				0	AMPS4	150					
								0	AMPS5	150					
								0	AMPS6	150					
								0	AMPS7	150					
								0	AMPS8	150					

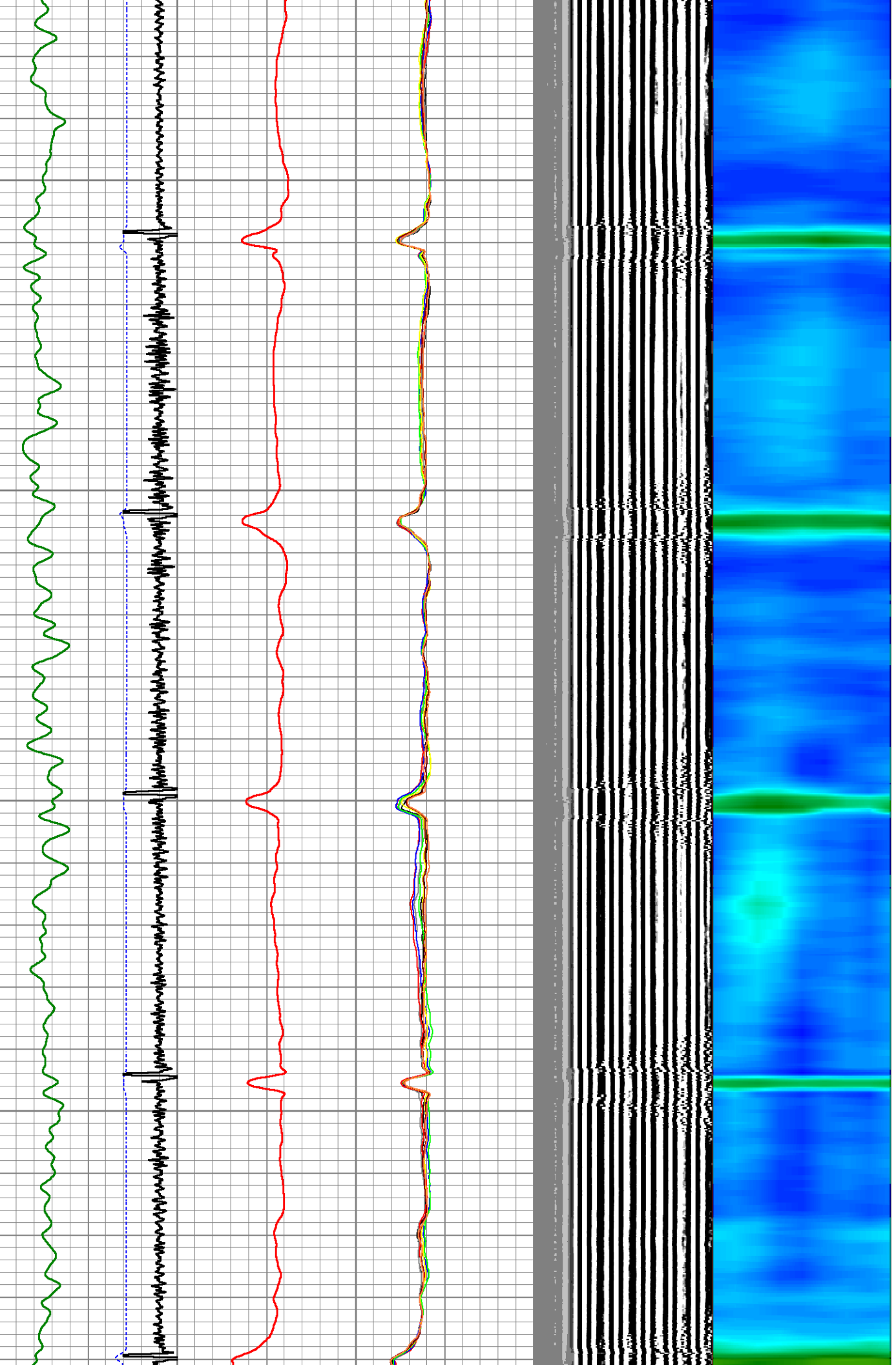


200

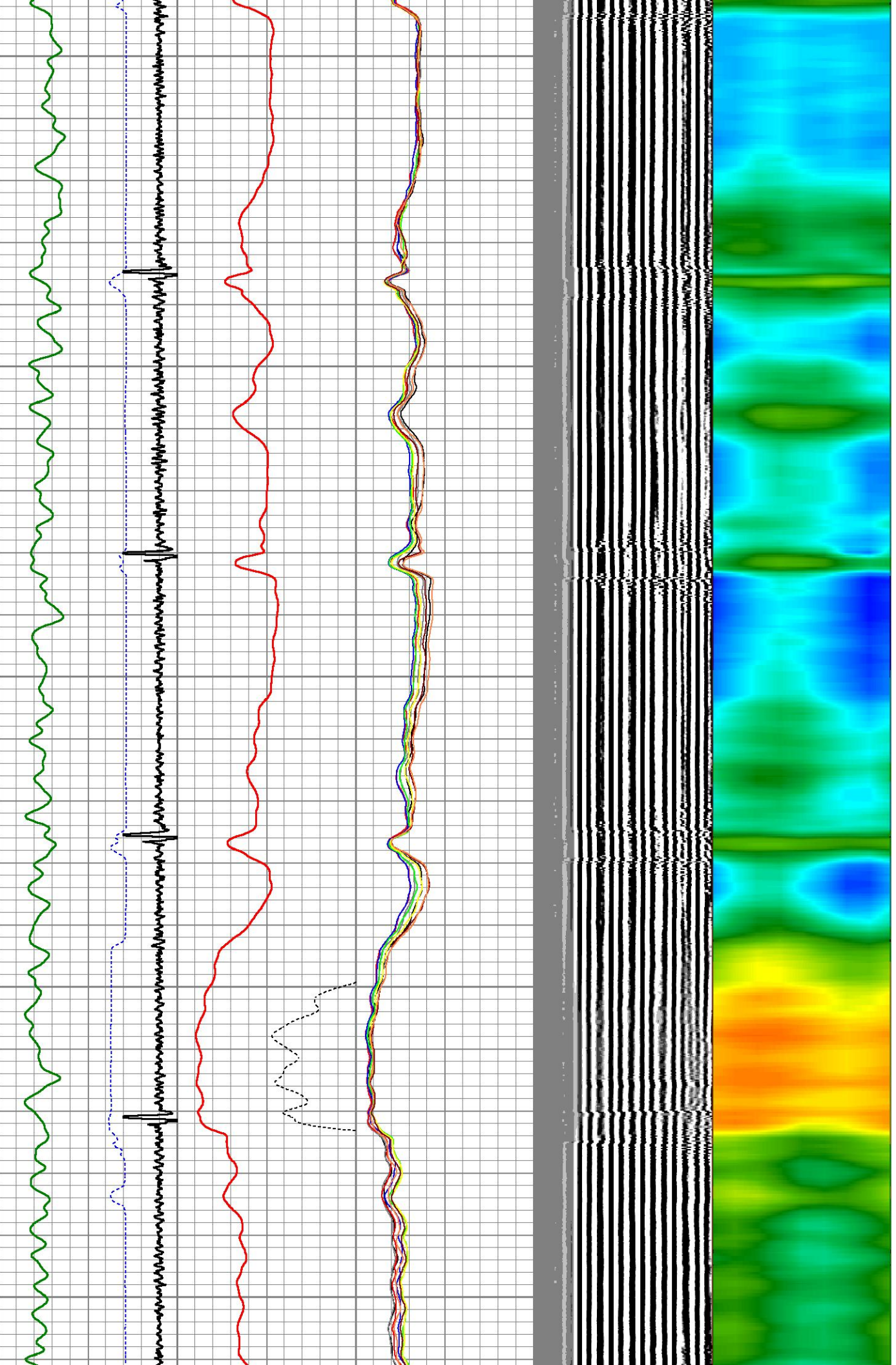
250

300

350



400
450
500
550
600

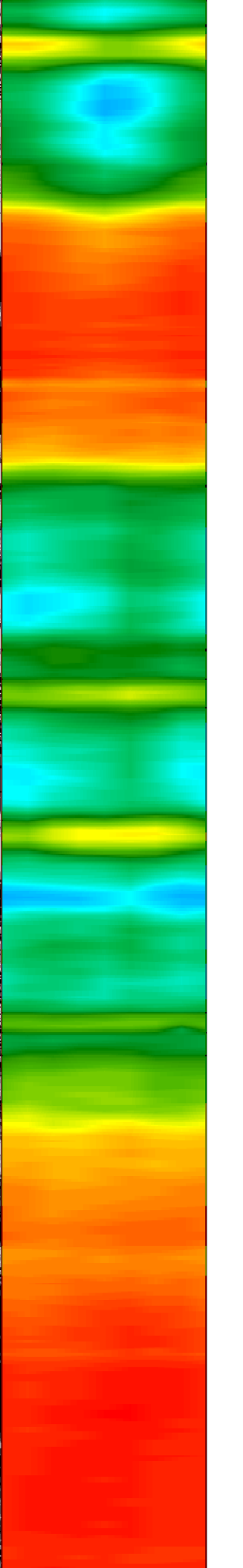
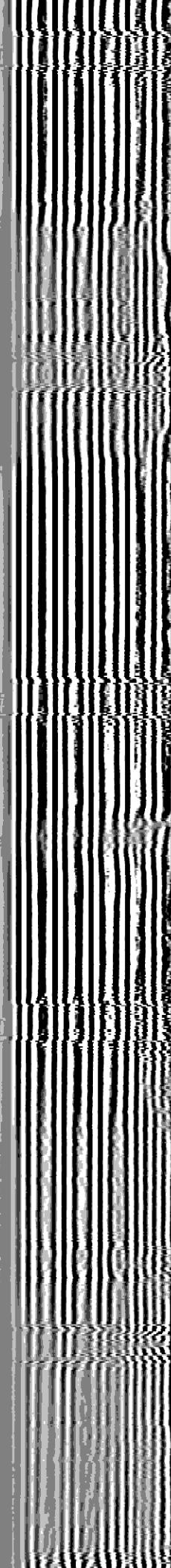


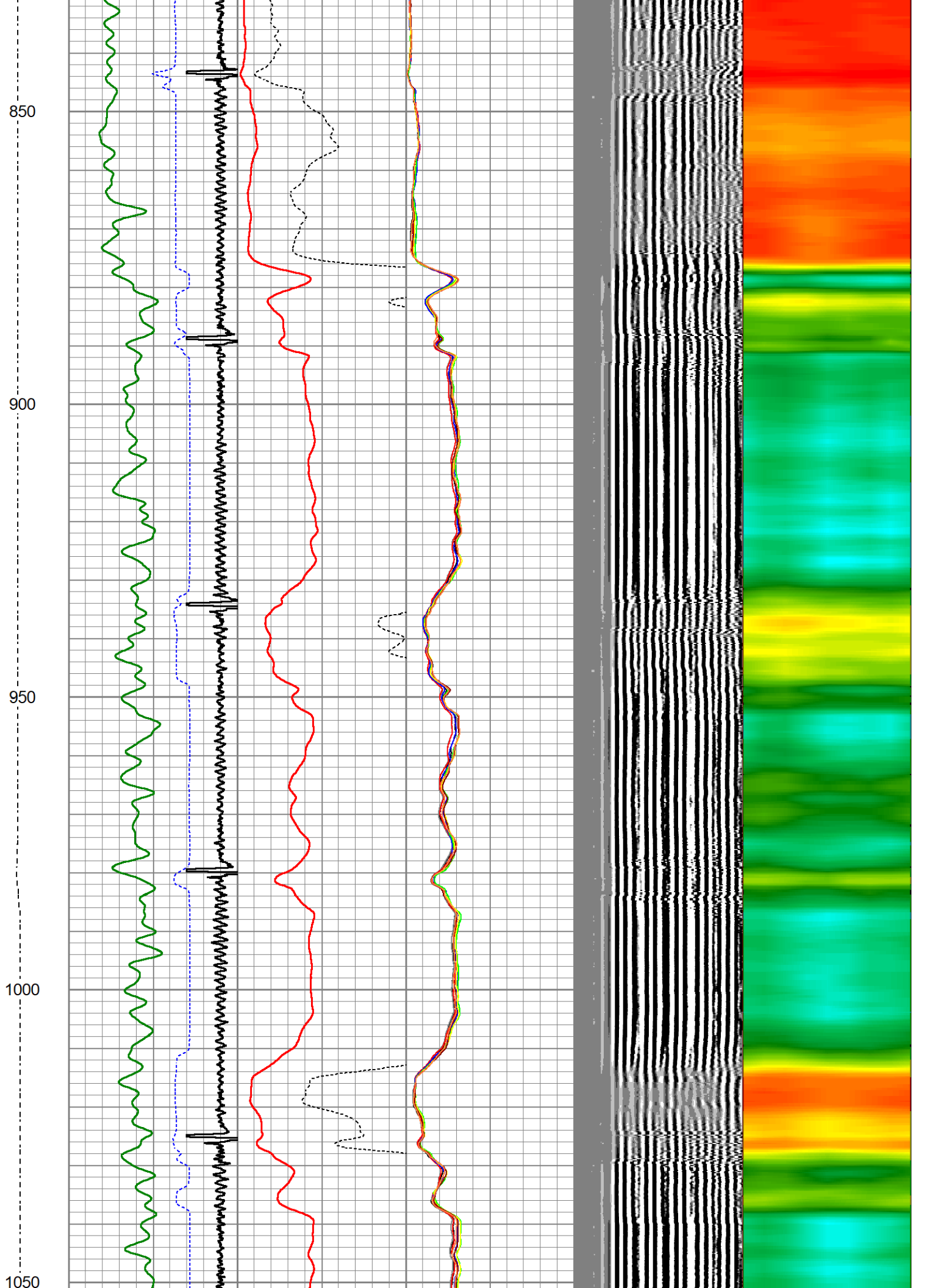
650

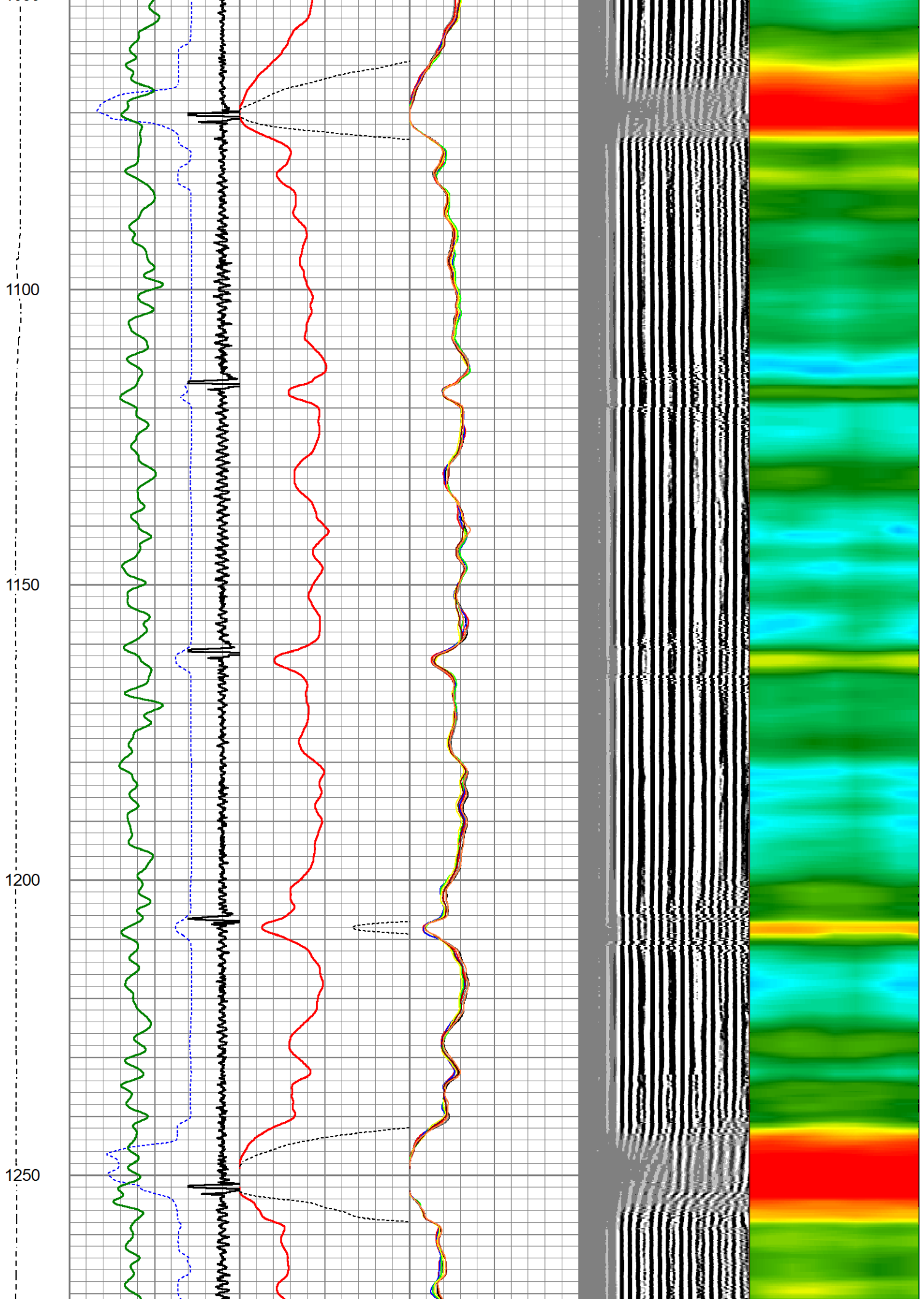
700

750

800





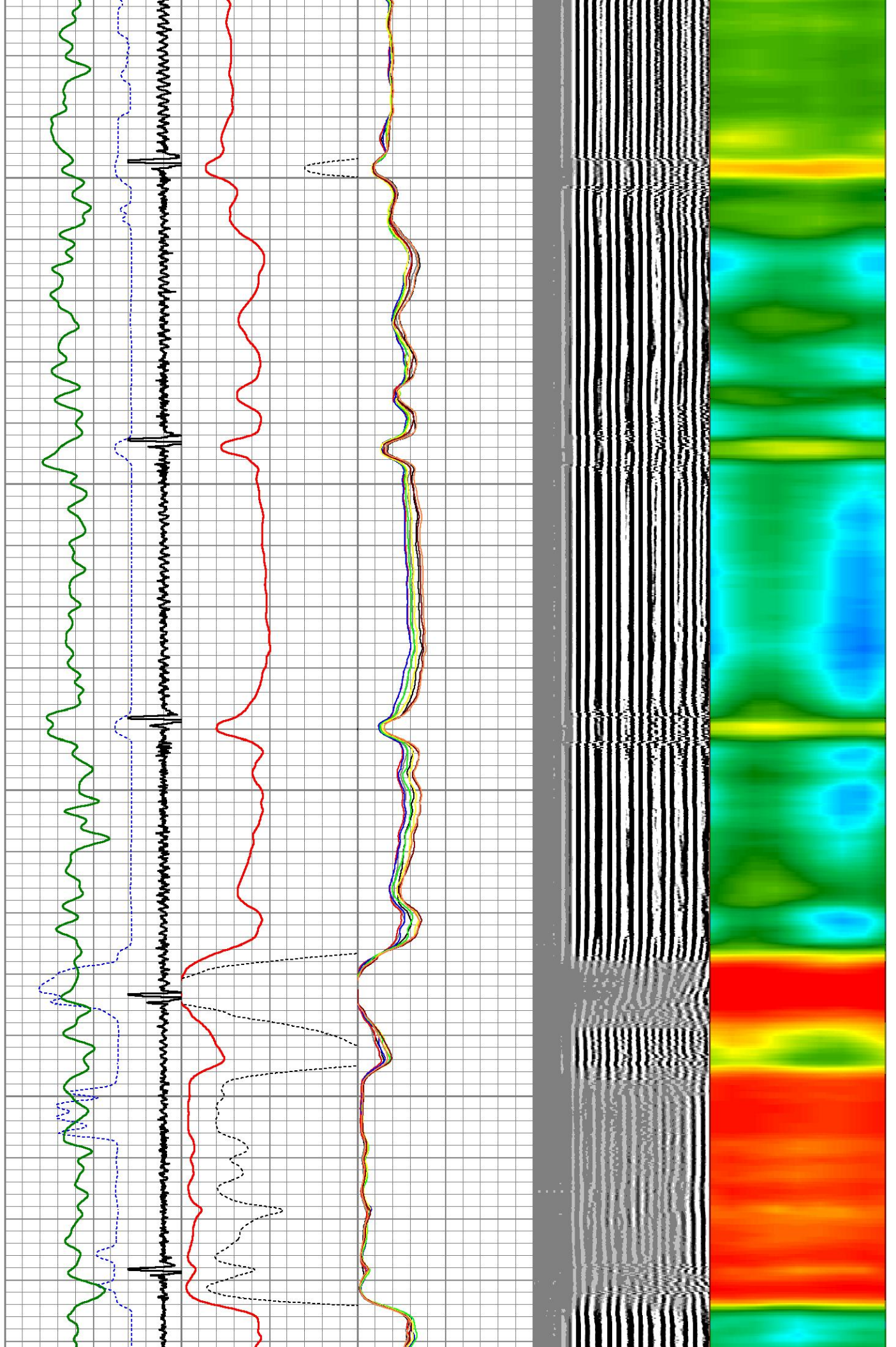


1300

1350

1400

1450



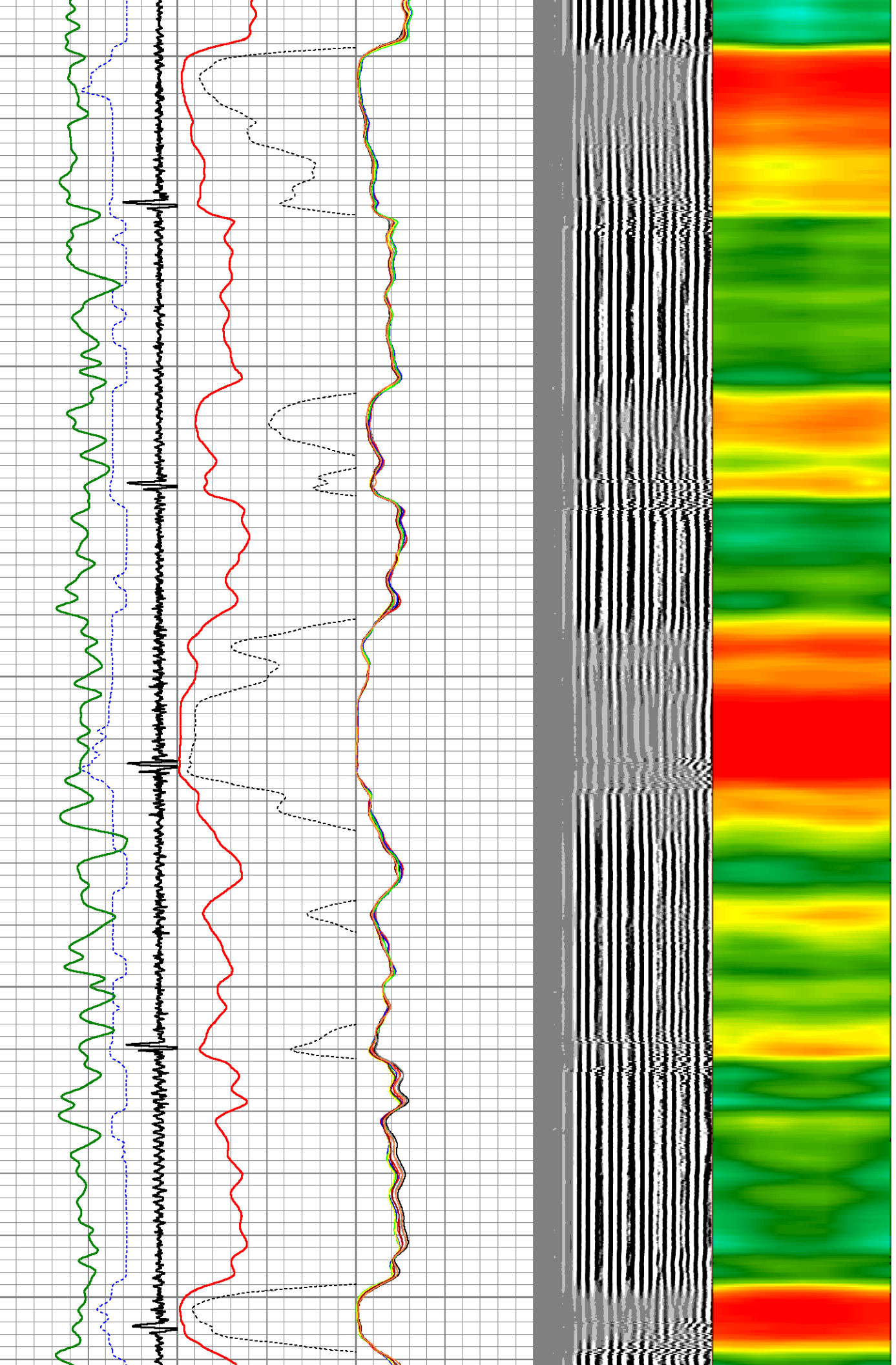
1500

1550

1600

1650

1700

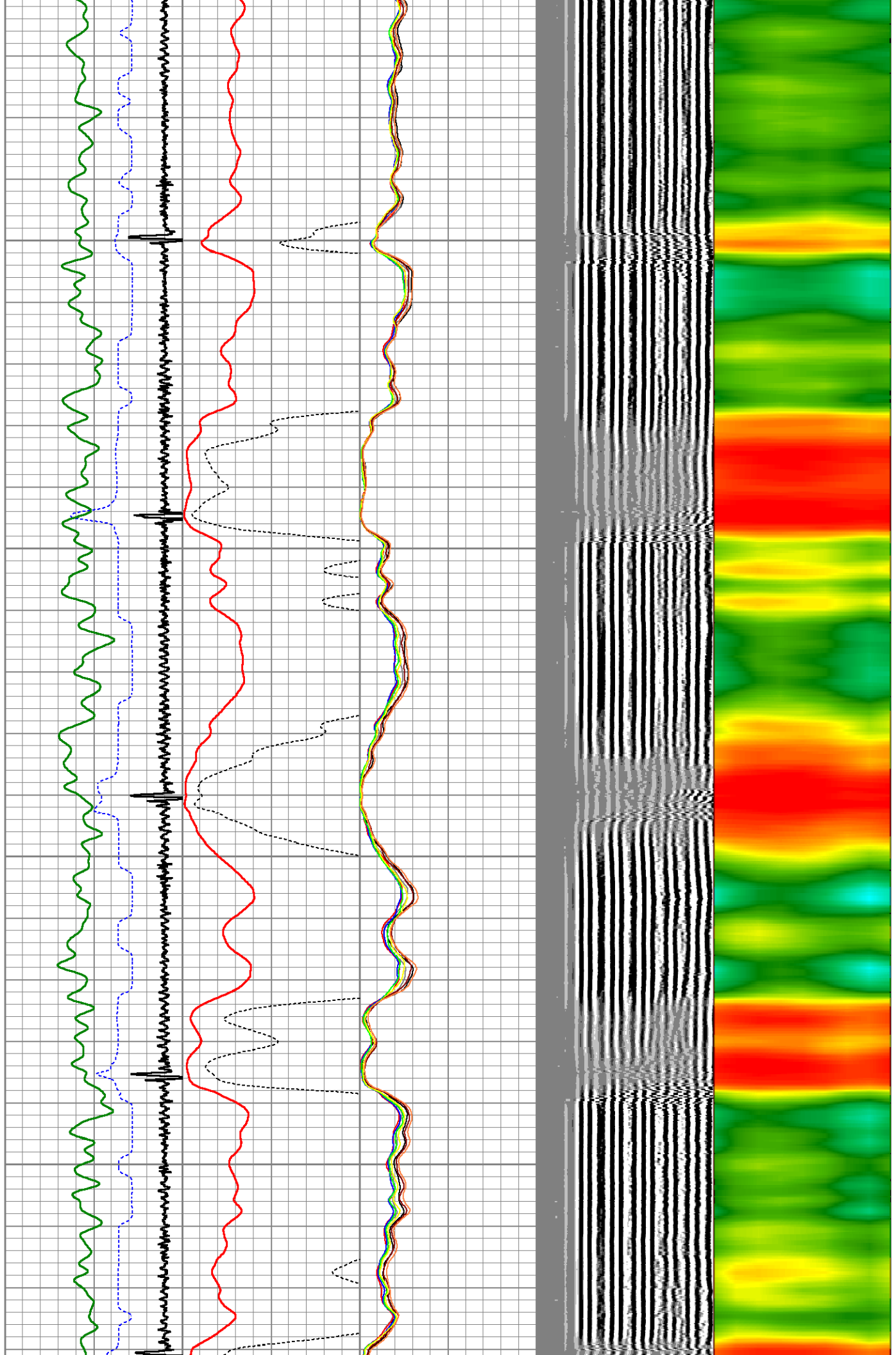


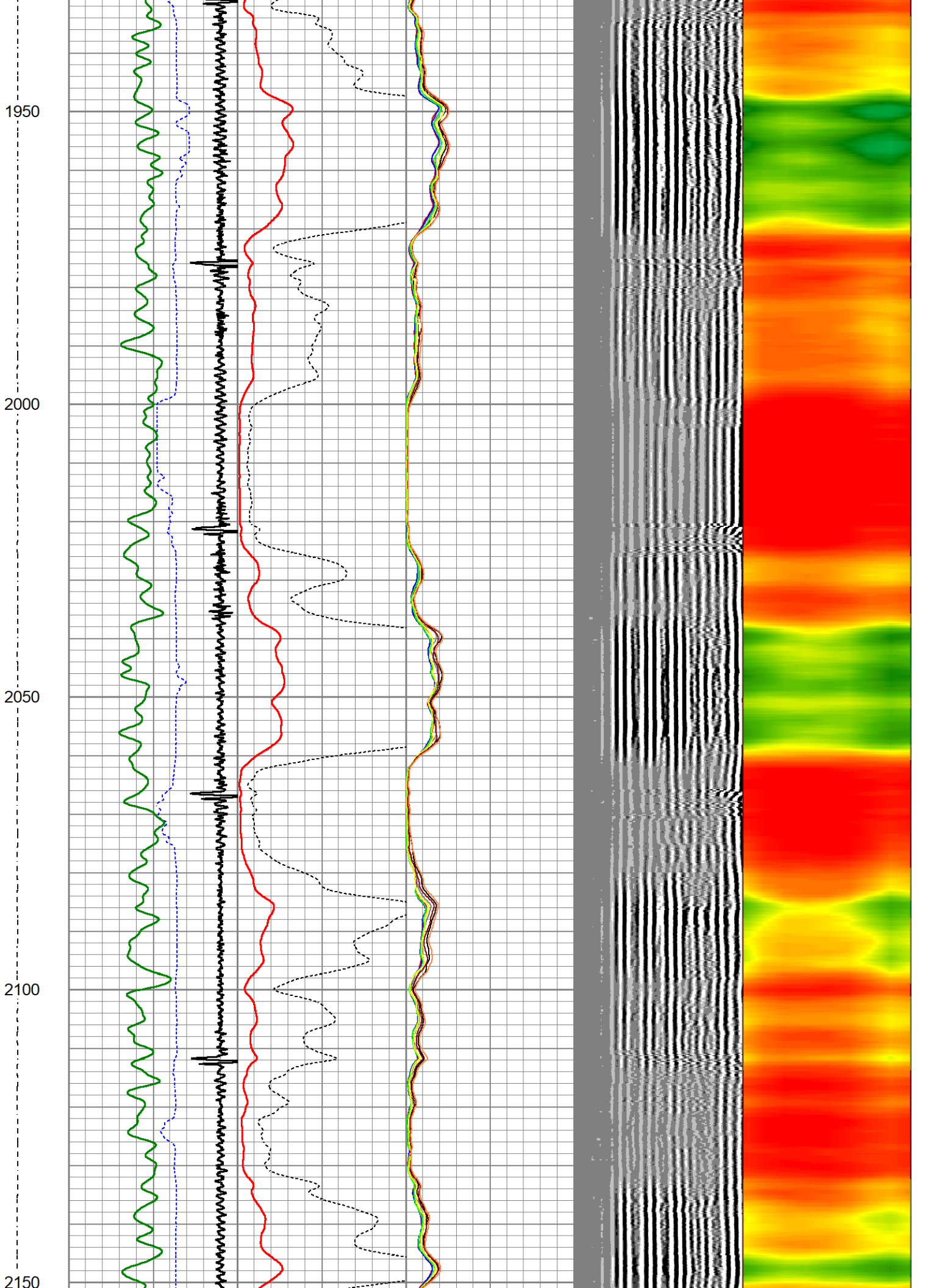
1750

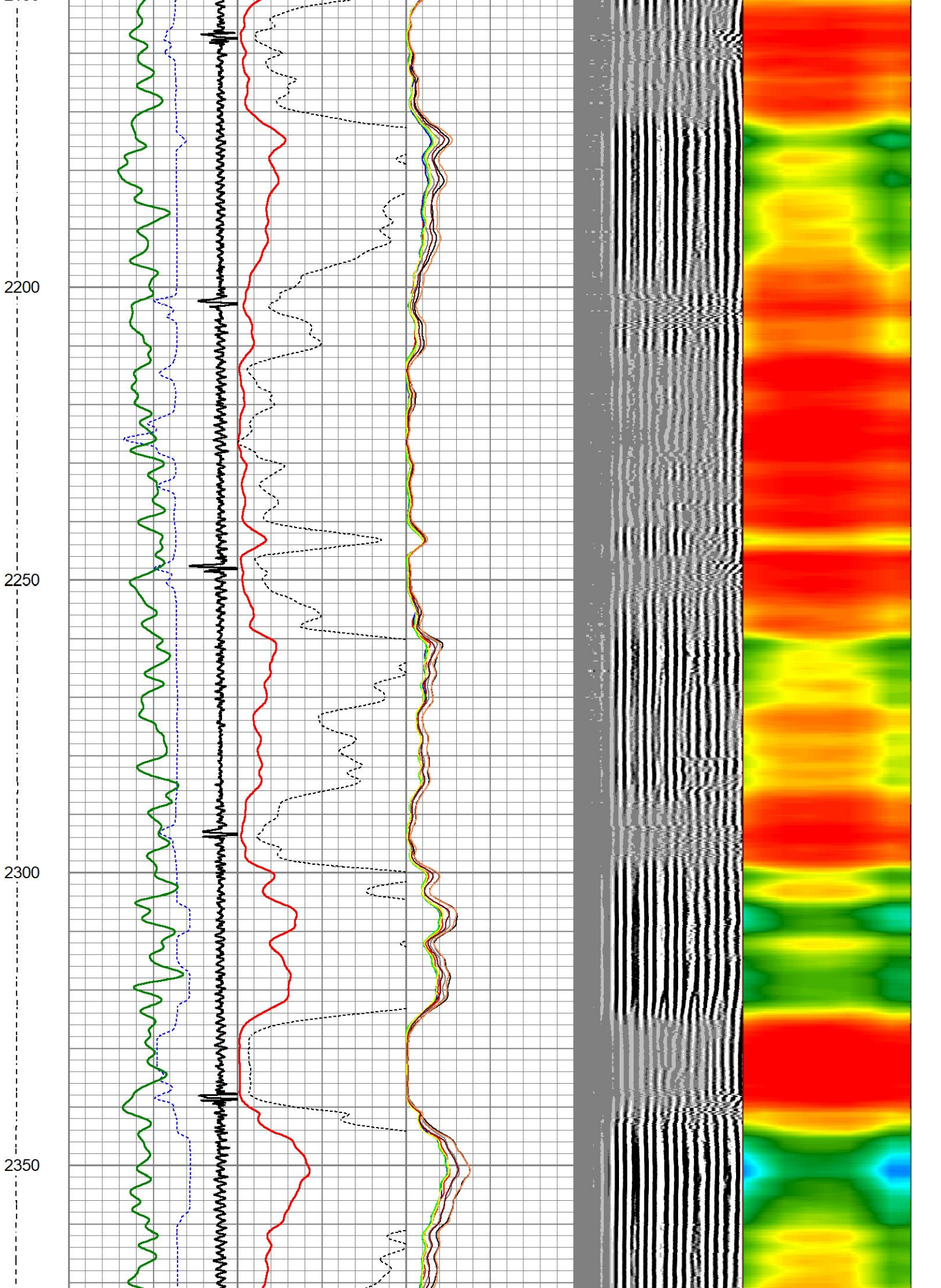
1800

1850

1900





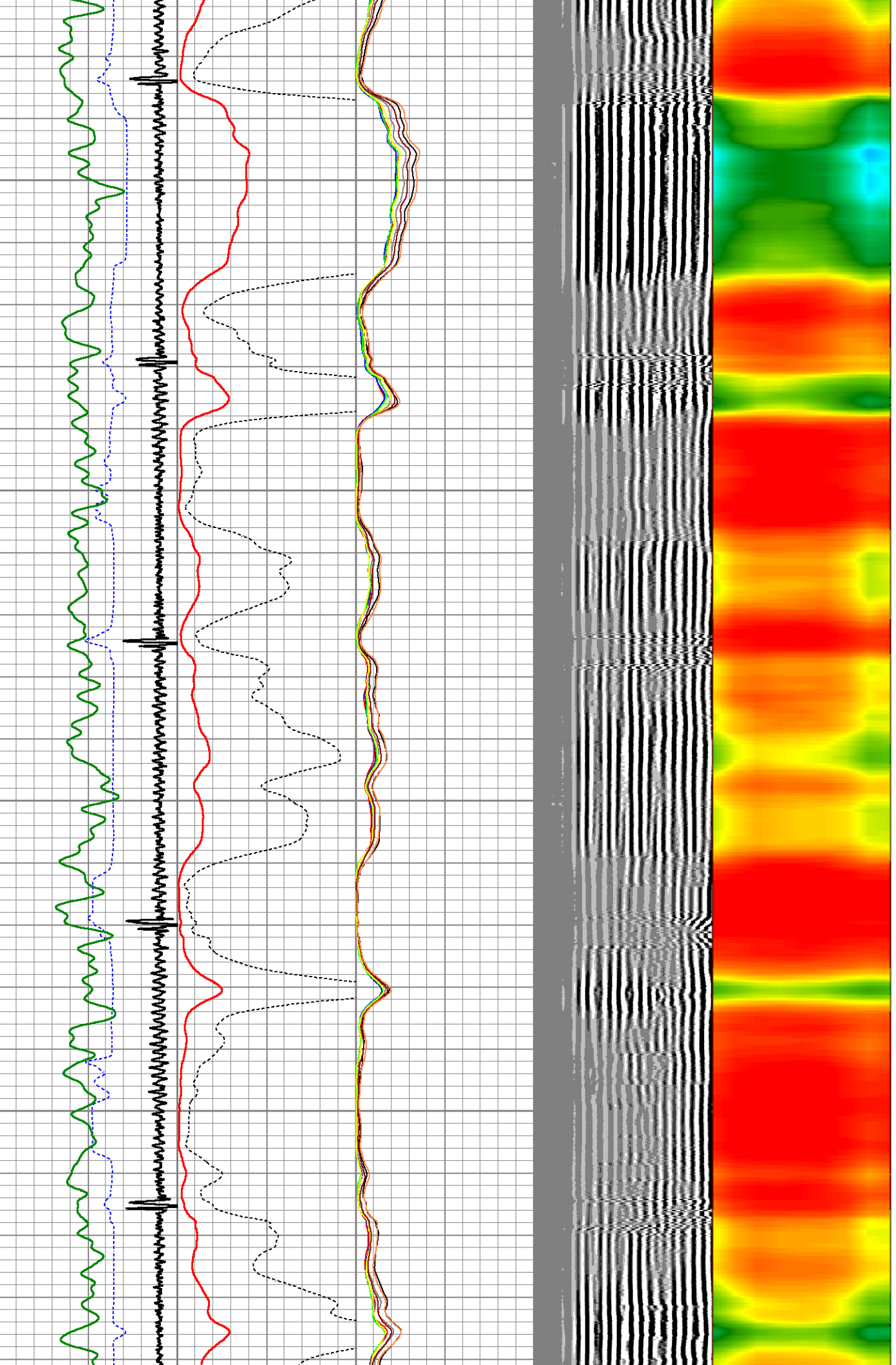


2400

2450

2500

2550



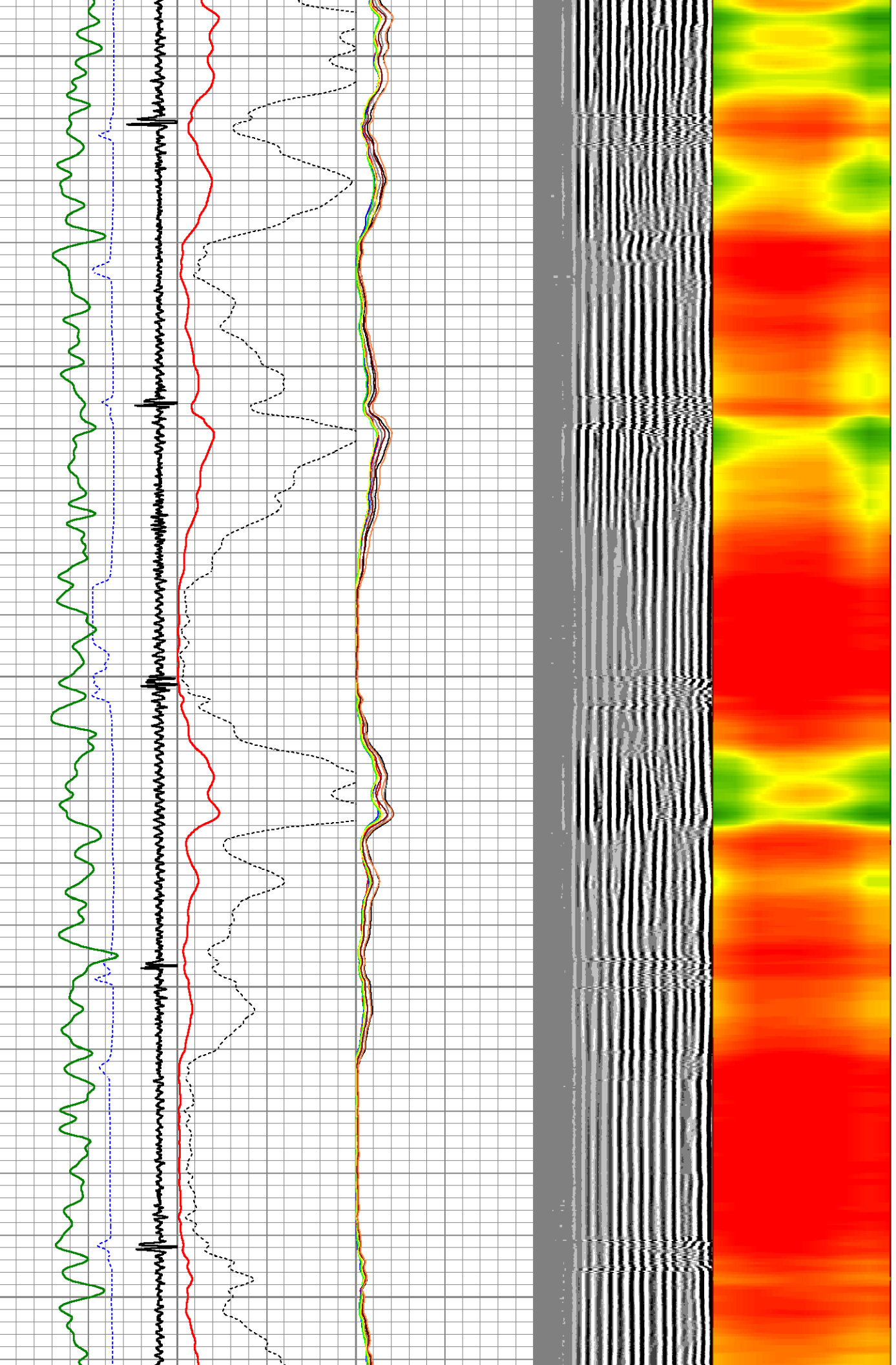
2600

2650

2700

2750

2800

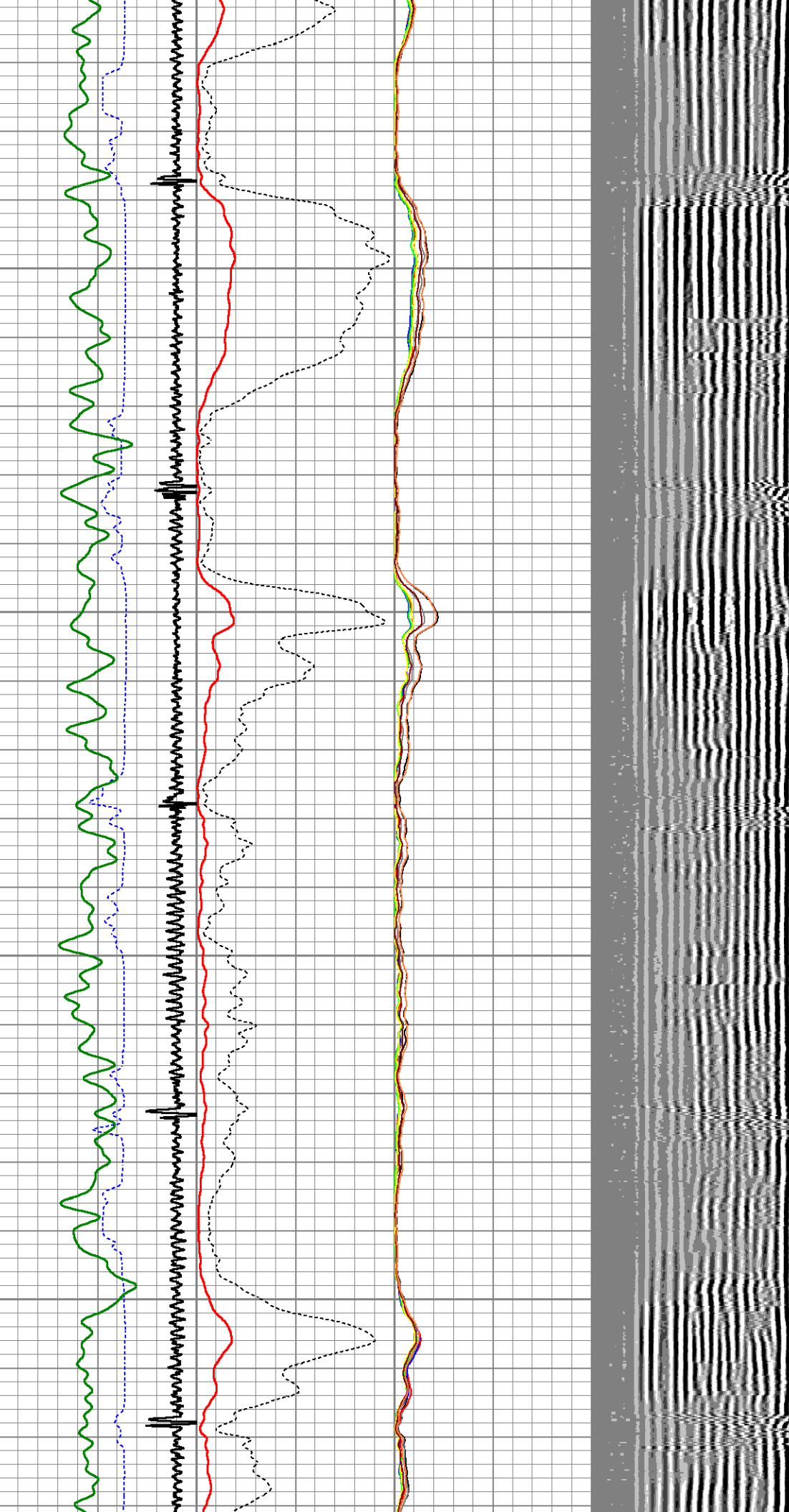


2850

2900

2950

3000



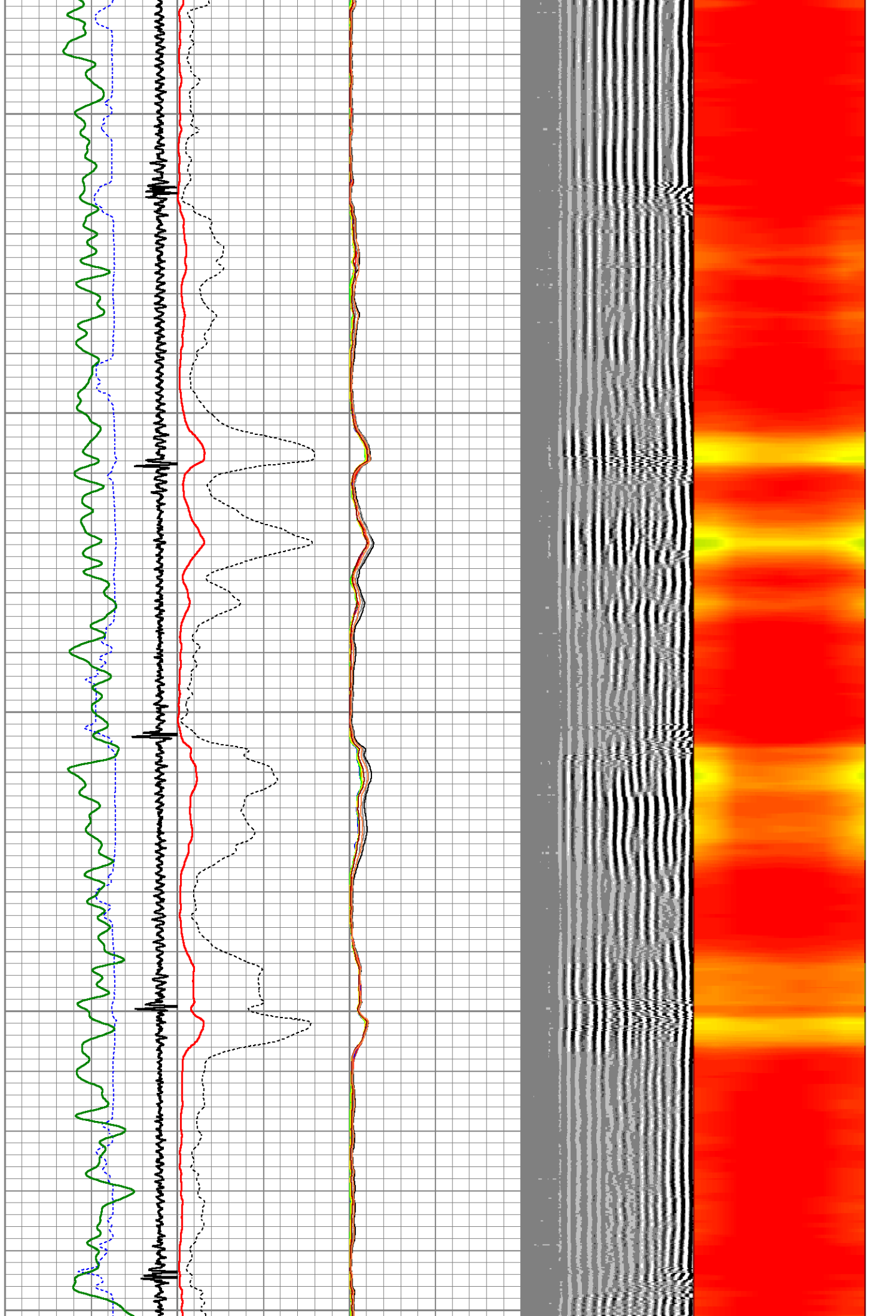
3050

3100

3150

3200

3250

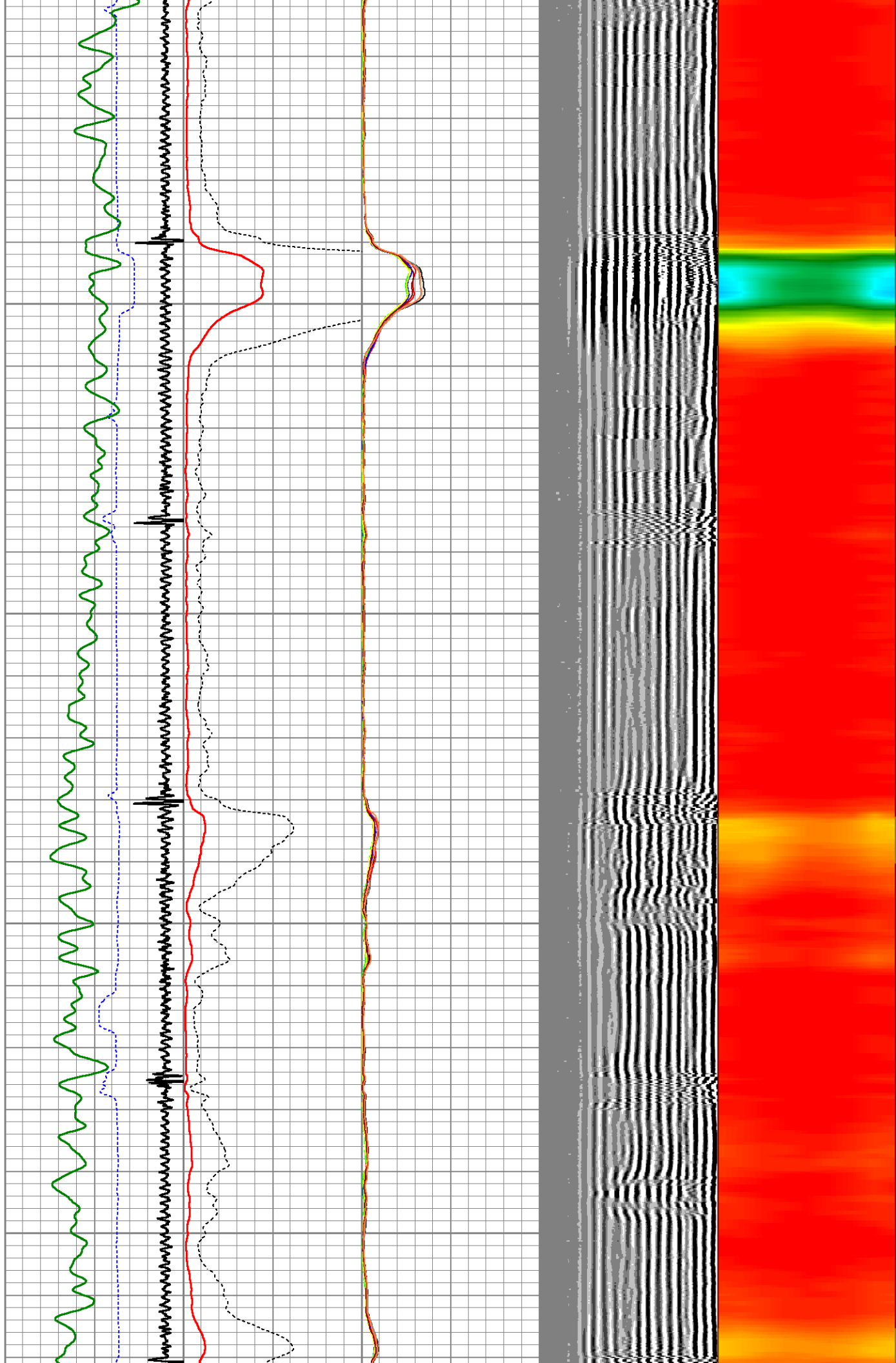


3300

3350

3400

3450

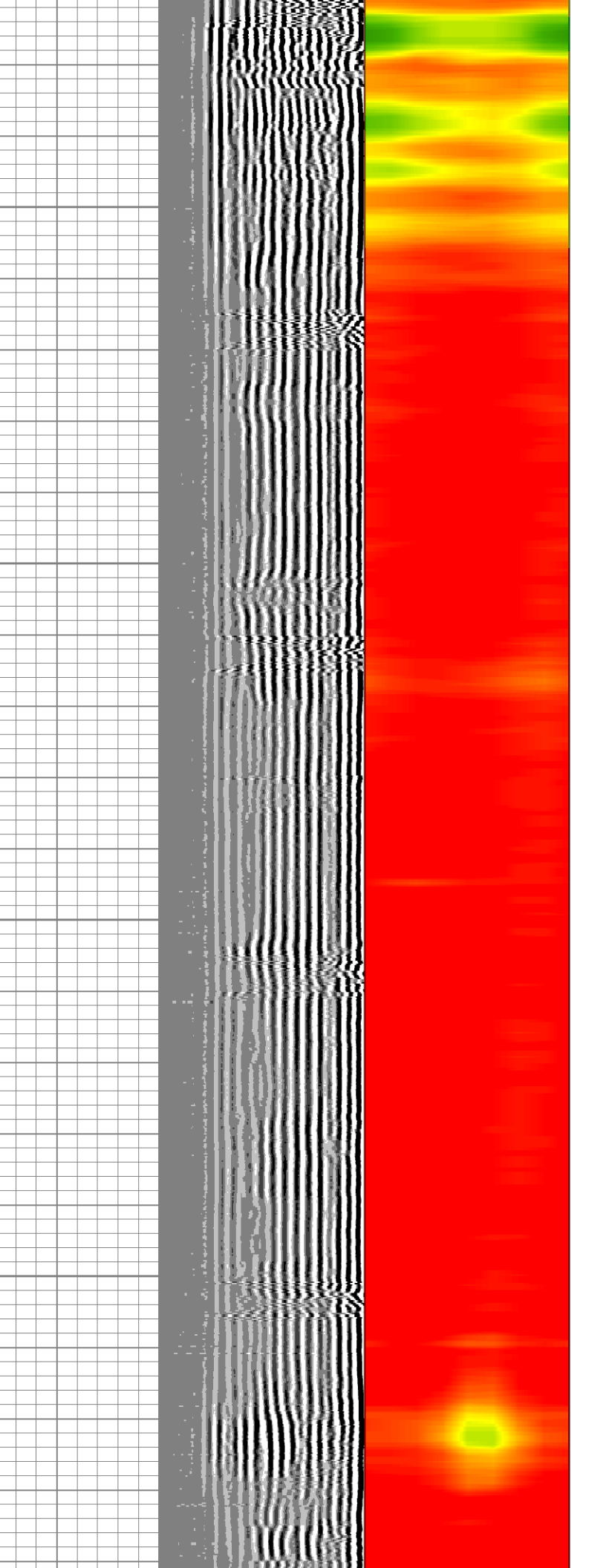
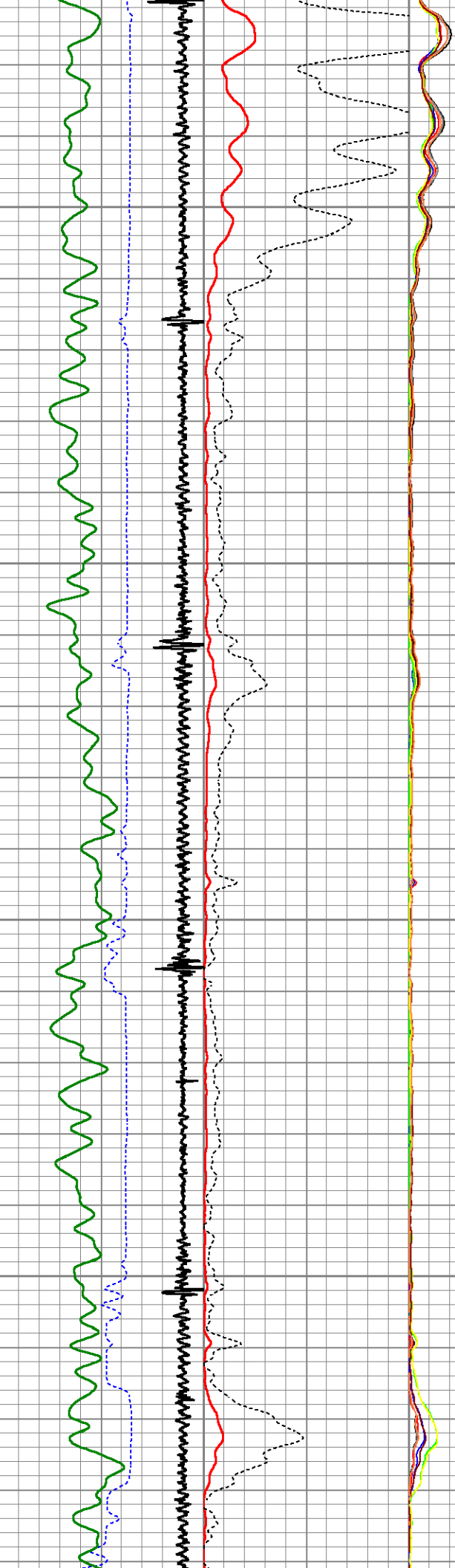


3500

3550

3600

3650



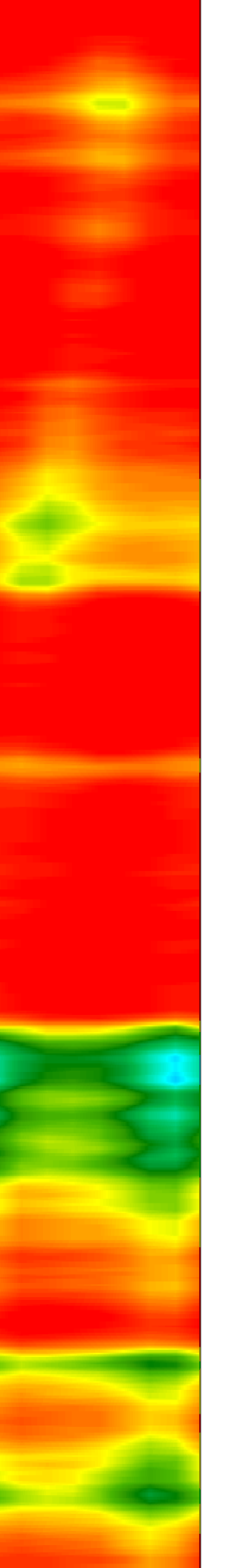
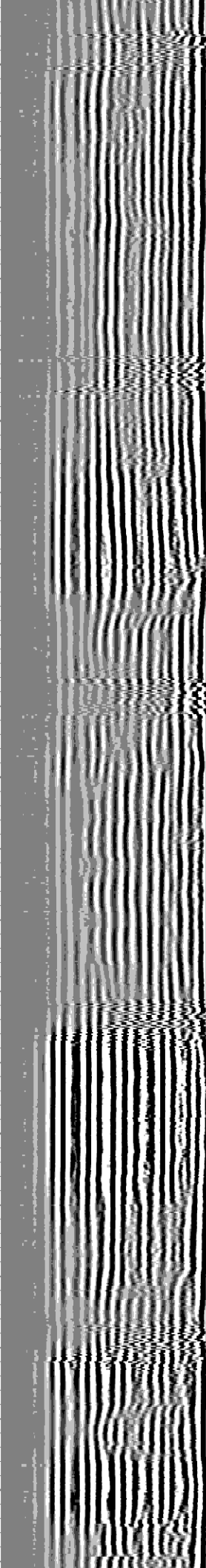
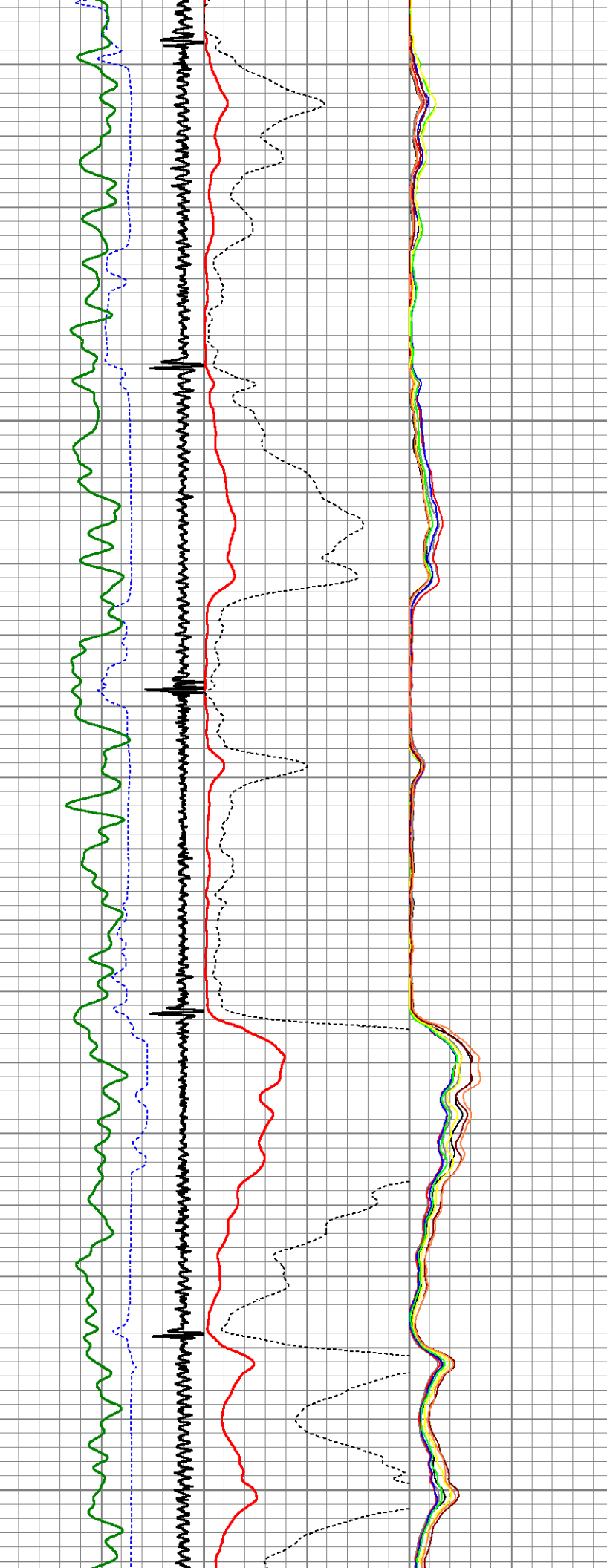
3700

3750

3800

3850

3900

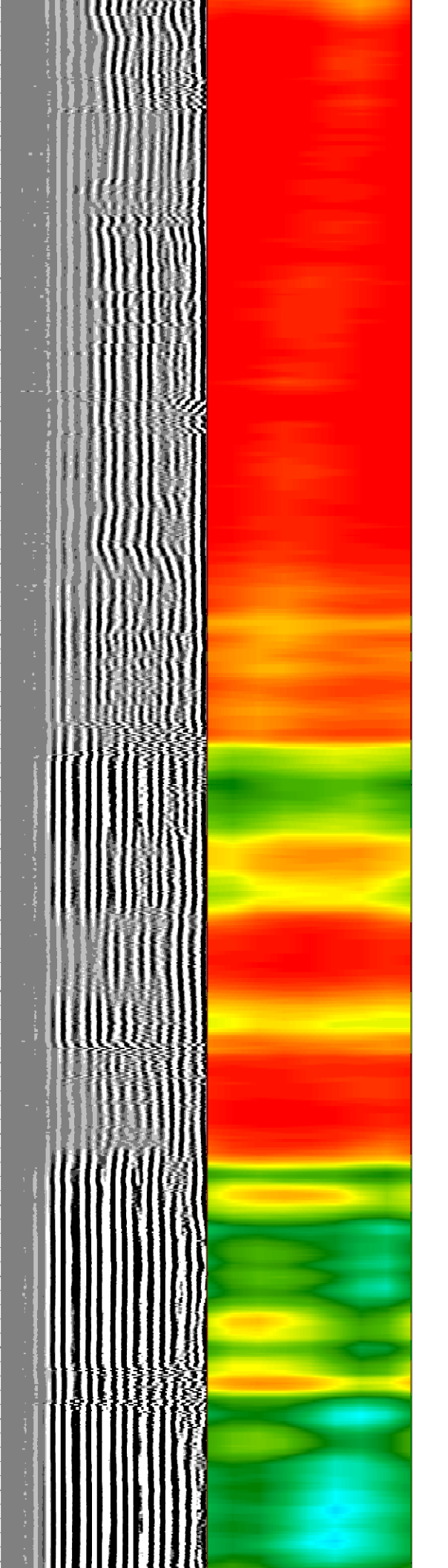
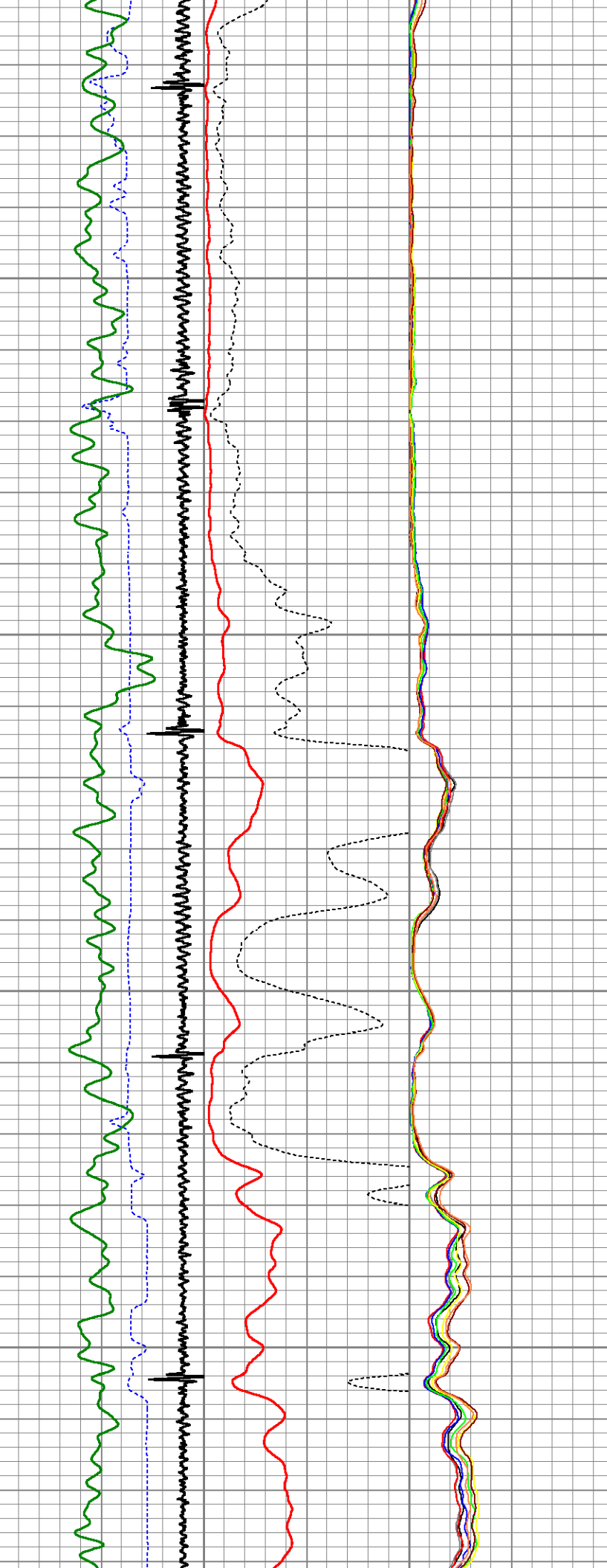


3950

4000

4050

4100



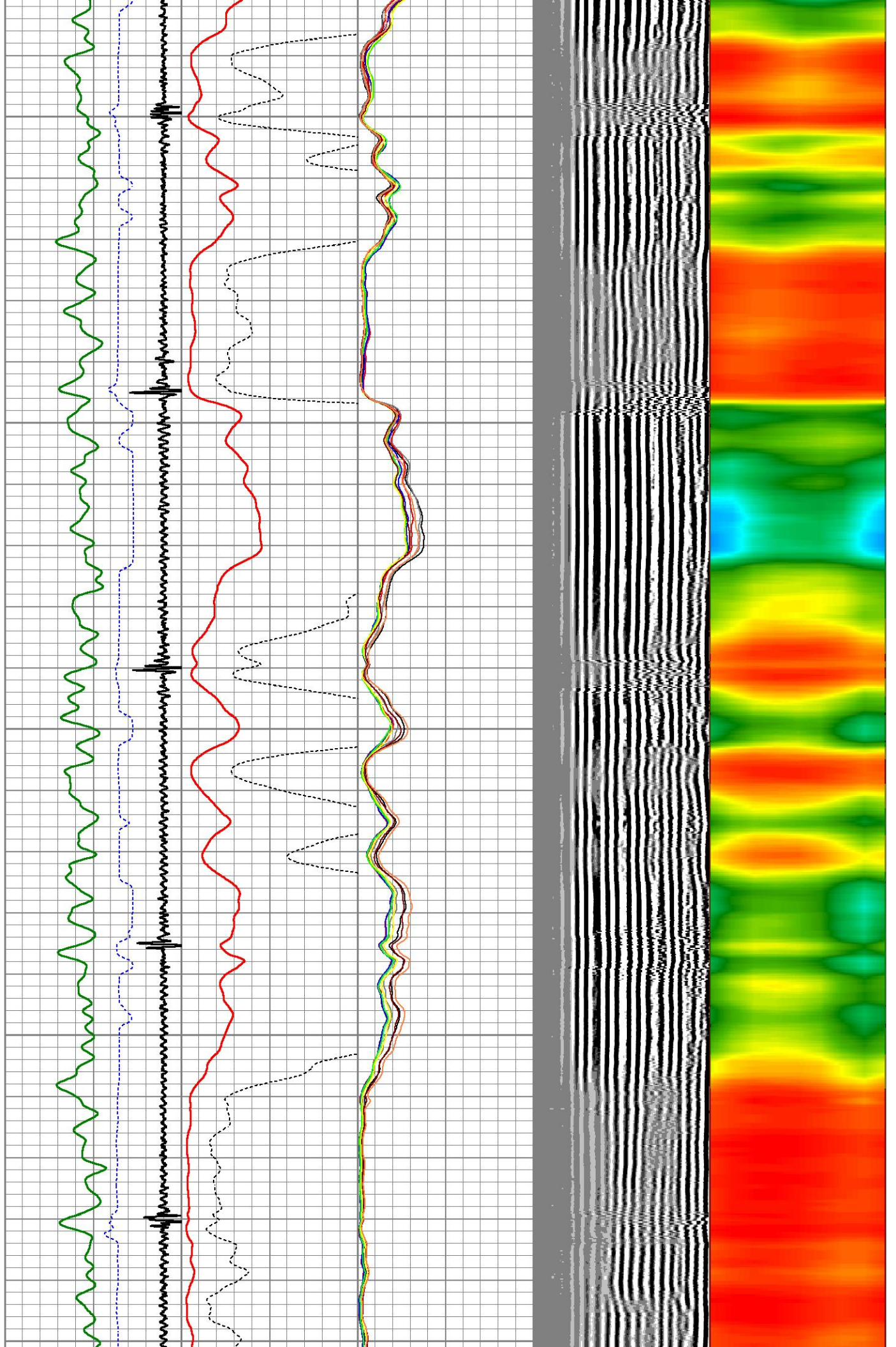
4150

4200

4250

4300

4350

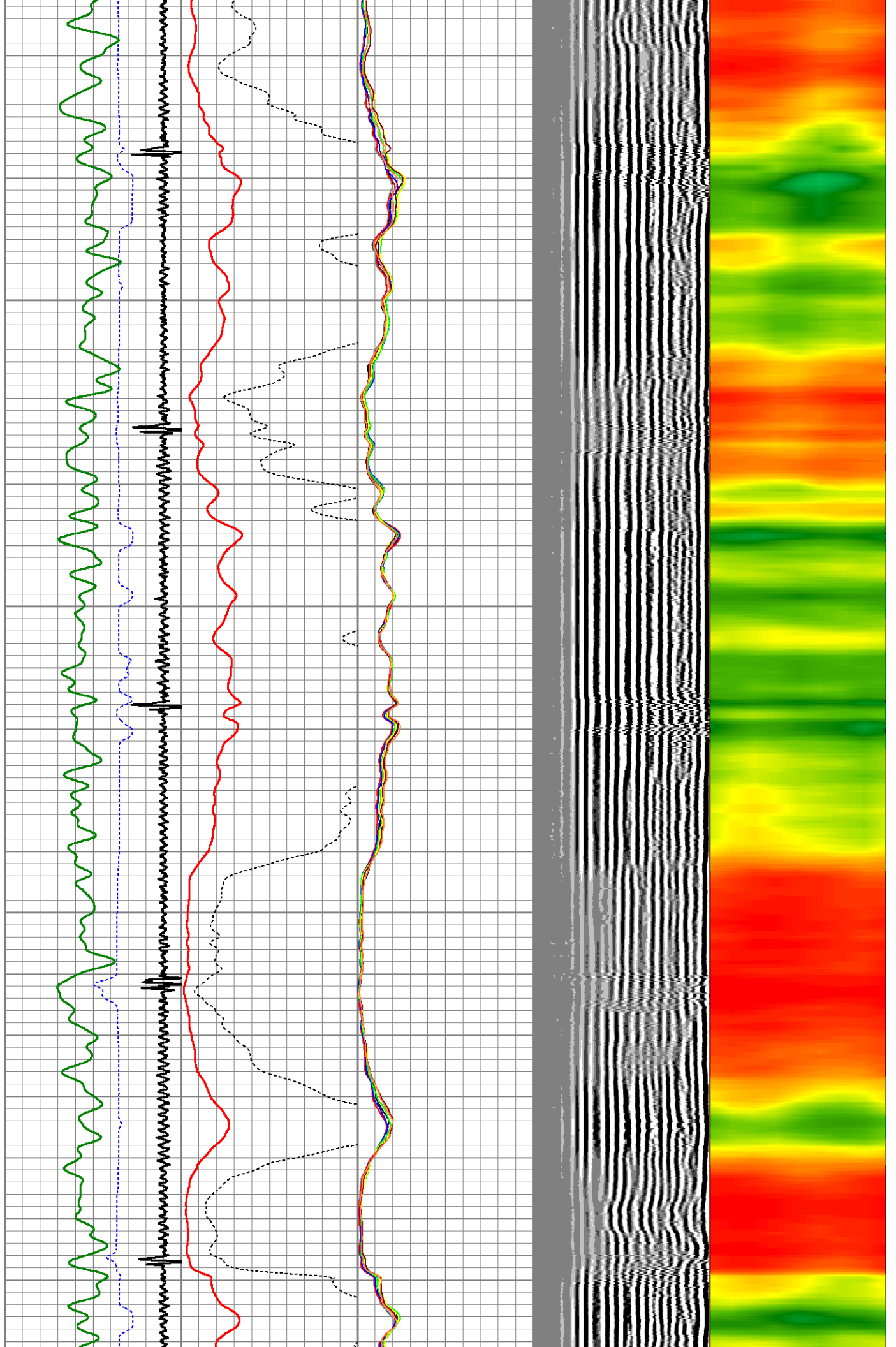


4400

4450

4500

4550

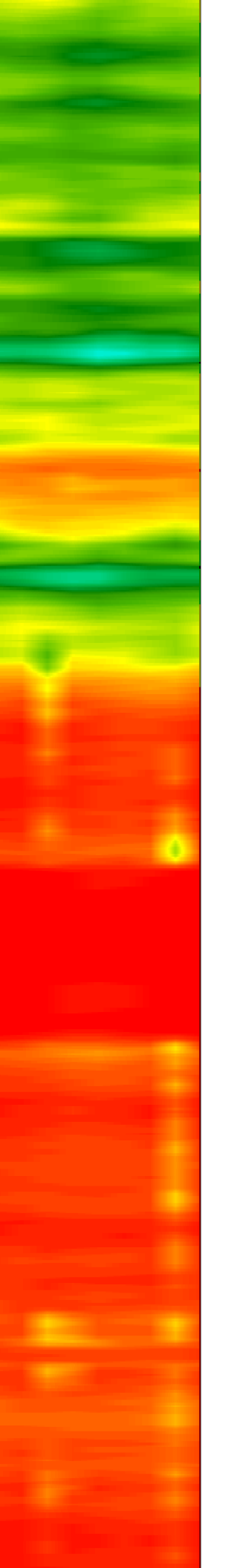
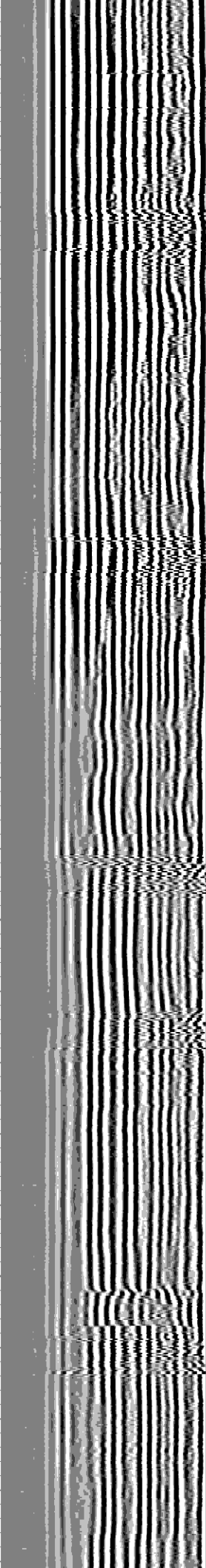
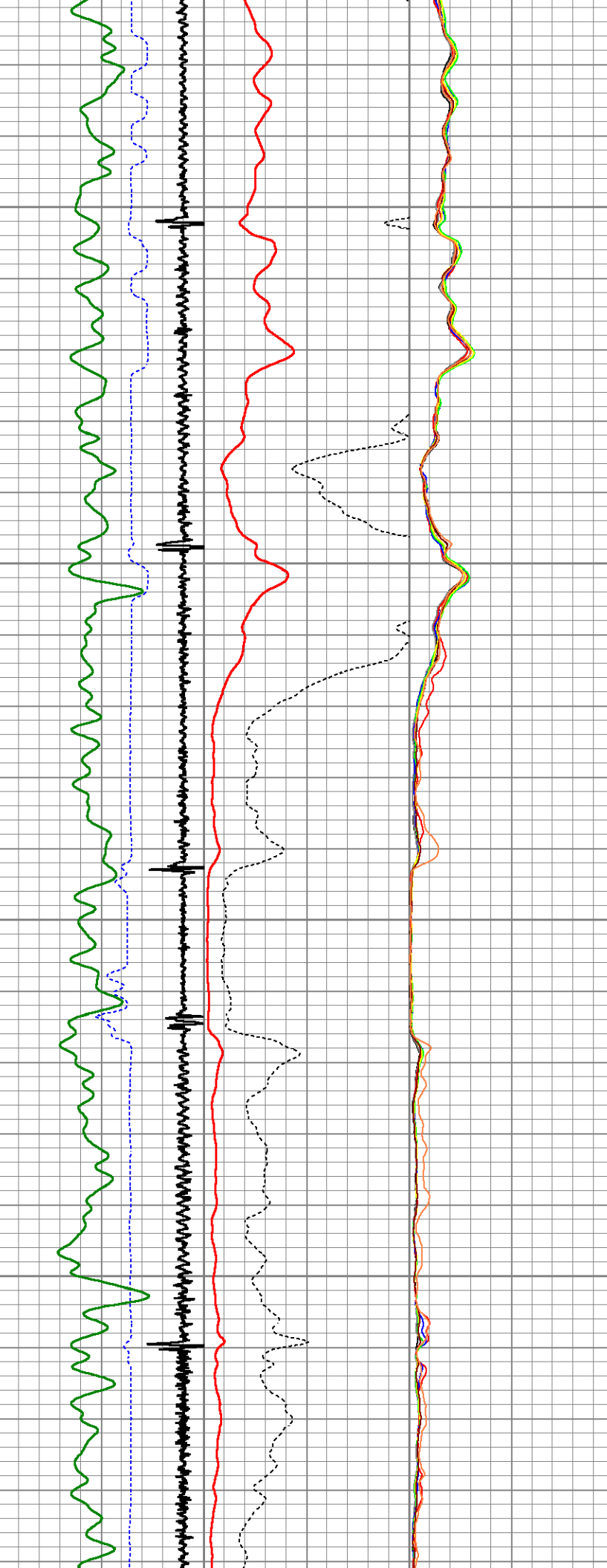


4600

4650

4700

4750



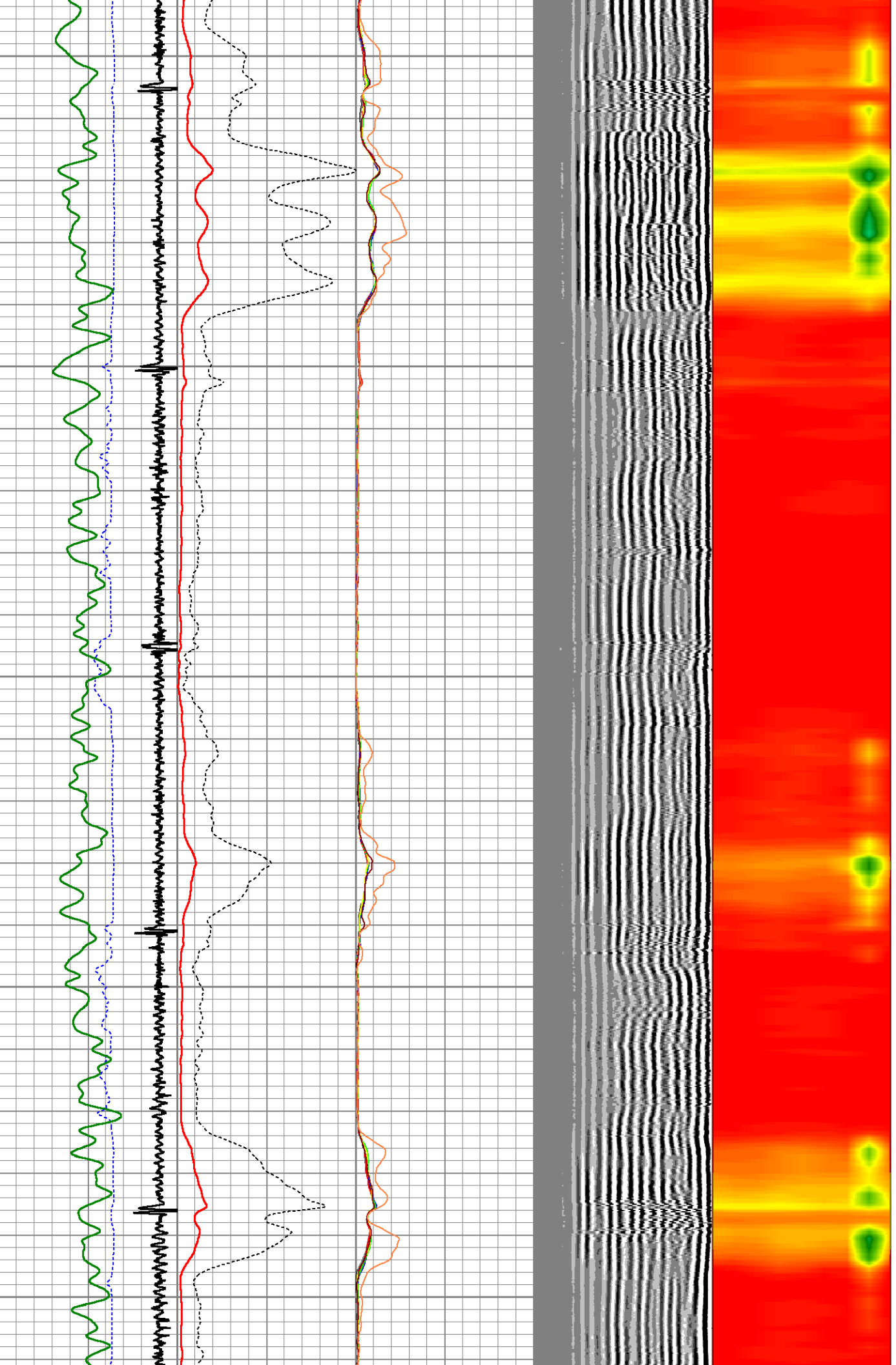
4800

4850

4900

4950

5000

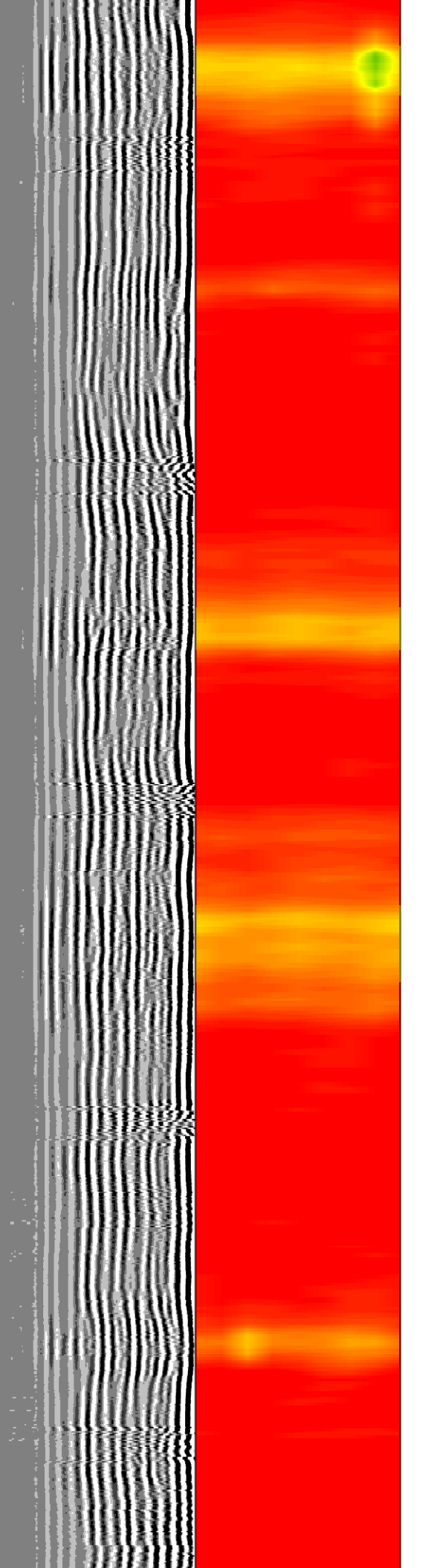
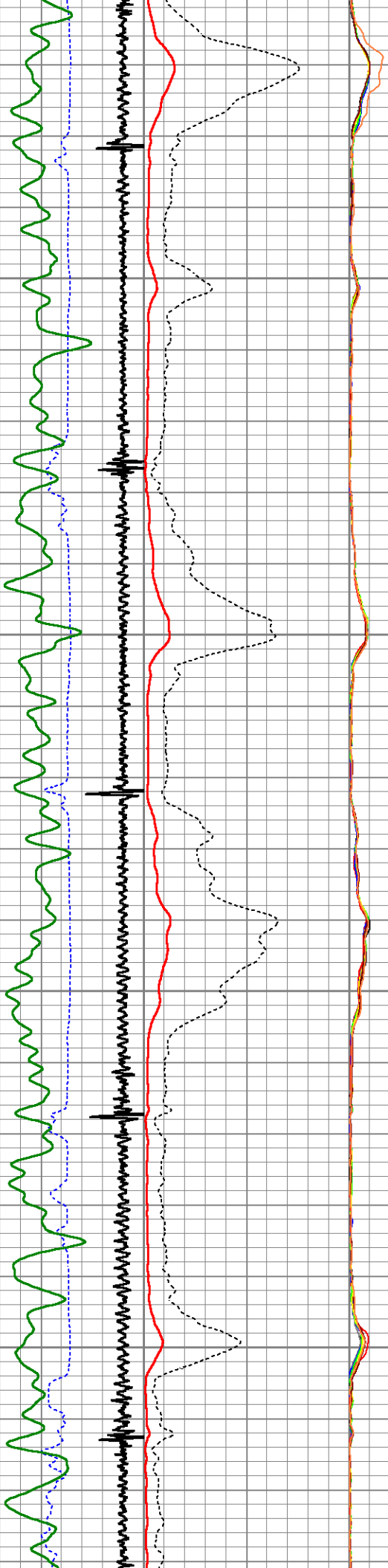


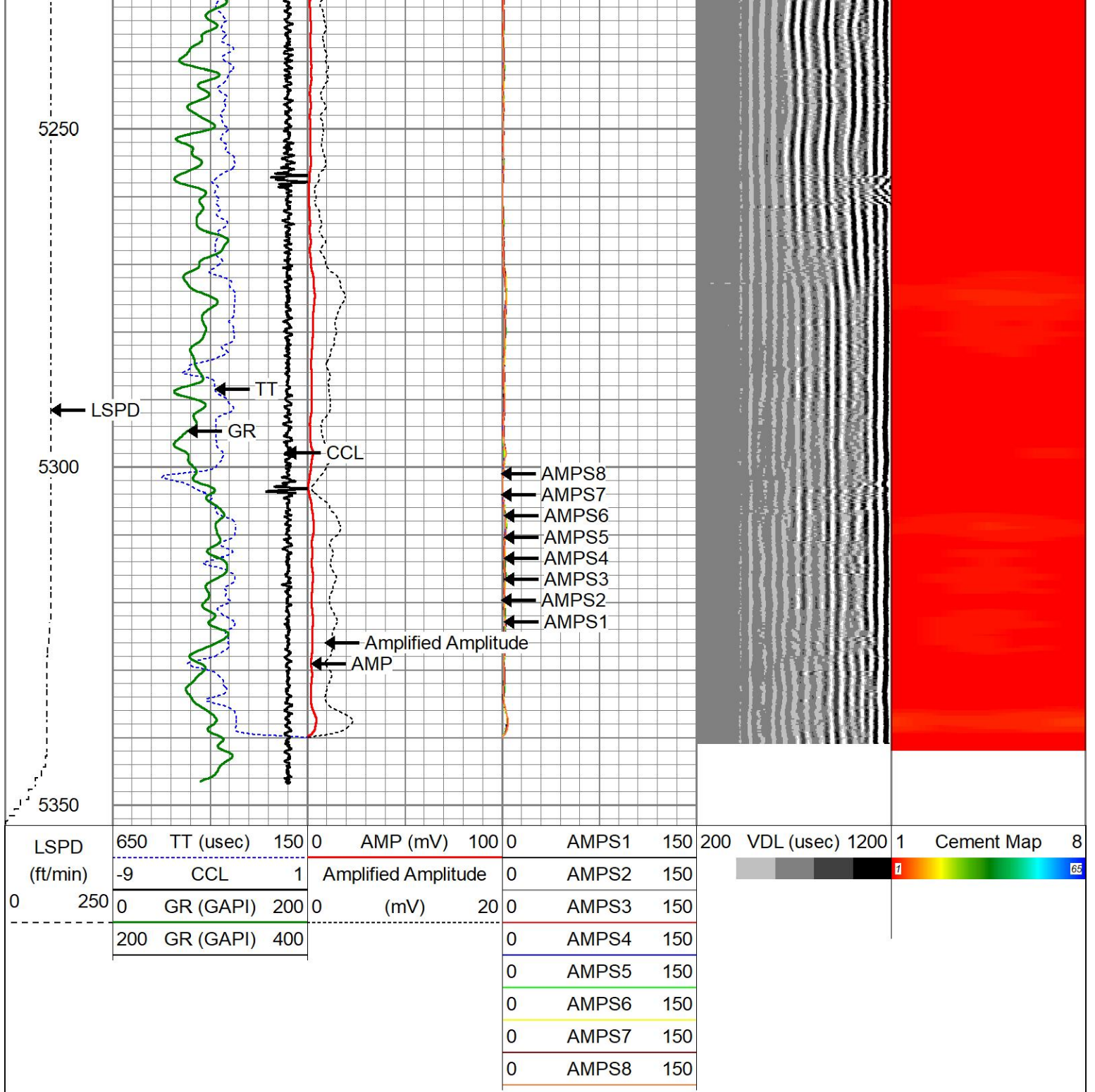
5050

5100

5150

5200





Calibration Report

Database File dutch lake 22-34h rbl civitas .db
 Dataset Pathname pass5
 Dataset Creation Wed Nov 05 12:28:08 2025

Gamma Ray Calibration Report

Serial Number: 27GRL10-XXXX
 Tool Model: 27GRL10
 Performed: (Not Performed)

Calibrator Value: 1.0 GAPI

Background Reading: 0.0 cps
 Calibrator Reading: 1.0 cps

Sensitivity:

1.0000

GAPI/cps

Segmented Cement Bond Log Calibration Report

Serial Number: Greeley Ext Temp 7
 Tool Model: 27SBT10

Calibration Casing Diameter: 7.000 in
 Calibration Depth: 155.180 ft

Master Calibration, performed (Derived):

	Raw (v)		Calibrated (mv)		Results	
	Zero	Cal	Zero	Cal	Gain	Offset
3'	0.056	1.011	0.800	62.165	64.232	-2.798
CAL	2.092	2.070				
5'	0.019	1.146	0.800	62.165	54.446	-0.224
SUM						
S1	0.053	0.979	0.000	62.165	67.082	-3.539
S2	0.056	1.036	0.000	62.165	63.408	-3.542
S3	0.058	1.034	0.000	62.165	63.723	-3.698
S4	0.058	1.041	0.000	62.165	63.218	-3.648
S5	0.061	1.047	0.000	62.165	63.098	-3.876
S6	0.064	1.071	0.000	62.165	61.765	-3.963
S7	0.049	1.024	0.000	62.165	63.727	-3.118
S8	0.055	1.015	0.000	62.165	64.769	-3.577

Internal Reference Calibration, performed (Not Performed):

	Raw (v)		Calibrated (v)		Results	
	Zero	Cal	Zero	Cal	Gain	Offset
CAL	0.000	0.000	2.092	2.070	1.000	0.000

Air Zero Calibration, performed Wed Nov 5 11:33:07 2025:

	Raw (v)		Calibrated (v)		Results	
	Zero		Zero		Offset	
3'	0.000		0.000			0.000
5'	0.000		0.000			0.000
SUM						
S1	0.000		0.000			0.000
S2	0.000		0.000			0.000
S3	0.000		0.000			0.000
S4	0.000		0.000			0.000
S5	0.000		0.000			0.000
S6	0.000		0.000			0.000
S7	0.000		0.000			0.000
S8	0.000		0.000			0.000



Company CIVITAS
 Well DUTCH LAKE 22-34H
 Field WATTENBERG
 County WELD
 State CO

Country U.S.A