



PO Box 329
Ft. Lupton, CO 80621
(303) 654-9202

"Here Safety Meets Quality at the Axis of Efficiency"

Date of Service	Job Type	Customer	Consultant	Well Name	Last Tckt	Ticket #
11/4/2025	Balance Plug	Civitas	Jason Gibbs	AIRLINE ROAD- STATE 15-12	No	5870
State	County	API	Rig	Operator		
Colorado	Arapahoe	05-005-06590	Ensign 352	Edgar Lozano Diaz		

Well Information						Water	
	Work String	Prod CSG	Surface	OH (I.D.)	Annular	Temp	82 °F
OD & Weight	4 1/2" 16.6#			9		PH	7
Factor	0.01422	0	0	0.0787		Chloride	1
Length	7750			7750		Well Description	
Capacity	110.21	0.00	0.00	609.82	0.00	TOC Plug 1	7,500
OD & Weight	4 1/2" 16.6#			9		EOT	7,750
Factor	0.01422	0	0	0.0787		TOC Tag Plug 2	2,852
Length	3200			3200		EOT	3,200
Capacity	45.50	0.00	0.00	251.80	0.00	TOC Tag Plug 3	1,391
OD & Weight	4 1/2" 16.6#		8 5/8" 24#	9		EOT	2,170
bbl/ft	0.01422	0	0.0636	0.0787			
Length	2170		190	1980			
Capacity	30.86	0.00	12.08	155.80	0.00		
Buoyancy	0.76	Buoyancy	0.76	Buoyancy	0.76		
Lift Pressure	PRV	Lift Pressure	PRV	Lift Pressure	PRV		
6148	4250	2538	1750	1721	1250		

Drivers, Crew and Equipment Allocation							
Driver and Heavy Duty Equipment				Crew and Light Duty Equipment			Misc. Tools or Equipment
Driver	Tractor	Trailer	Mileage	Crew	Equipment	Mileage	Required or Requested
JESUS MENDOSA	2830	CP2905	63	Edgar Lozano Diaz	7485	63	
MARCOS		CB7192	125				
Abelino Rodriguez	1858	CB2321	125				
Abelino Rodriguez	1435	CB7016	125				
MARCOS	4367	CB2359	125				
Total Heavy Duty Mileage			563	Total Light Duty Mileage		63	

G Neat	120	1K E-Thixo	150	1K E-Thixo	450		
Desc	Qty	Rate	Total	Desc	Qty	Rate	Total
G Neat	120.00			Sugar	250.00		
1K E-Thixo	150.00			Pro-Flush	60.00		
1K E-Thixo	450.00			Liquid Retarder	4.00		
Pump & Bulk 1st 4hrs	1.00			Defoamer	10.00		
HD Mileage - Pump	63.00						
HD Mileage - Bulk	500.00						
Data Recording	1.00						
LD Mileage - Pickup	63.00						
Add'l Bulk	3.00						
Add'l hrs over 4	12						

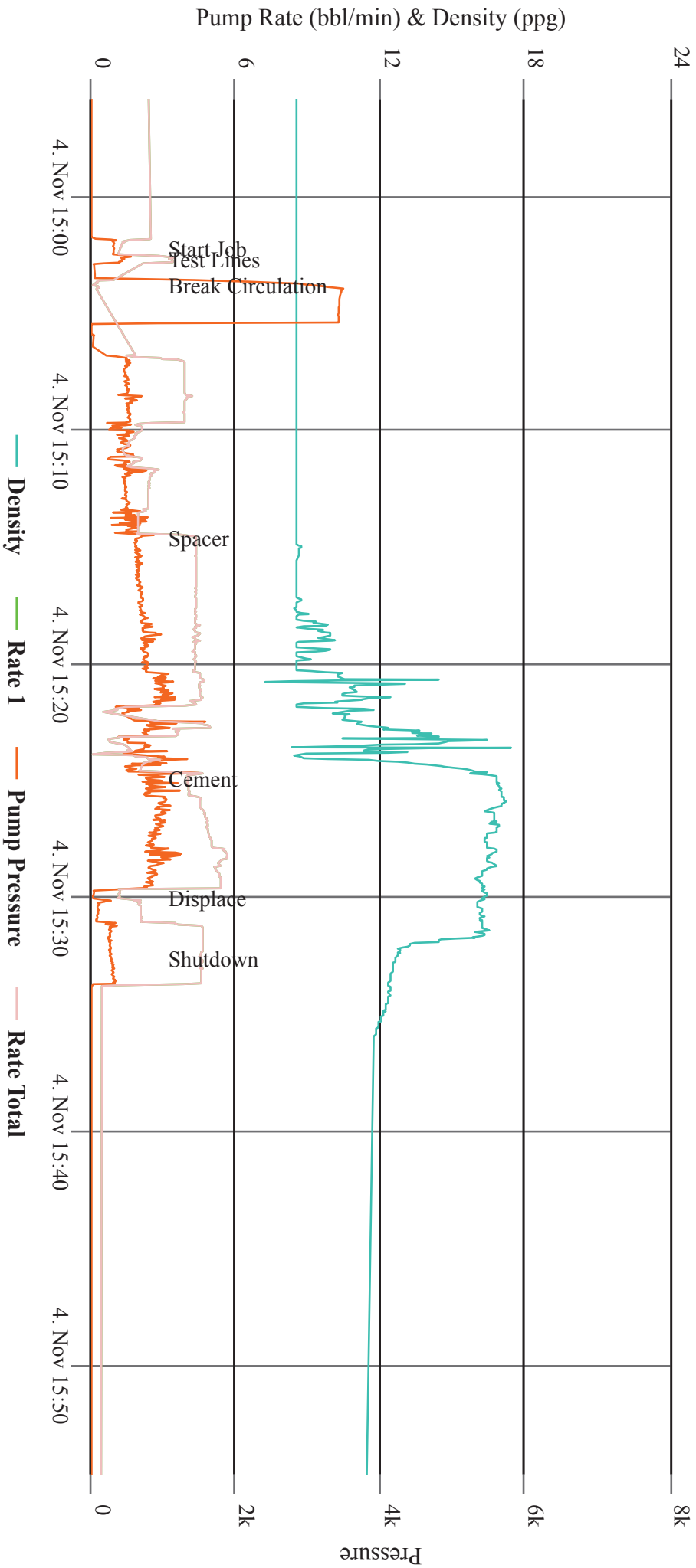
Print Sign *Jason Gibbs* Date

AIRLINE ROAD STATE
15-12
AFE:
COST CODE:
ROUTING: TREY SLOAN
JASON GIBBS
DATE SIGNED:
11-06-25

See page 2 for job log and any necessary remarks

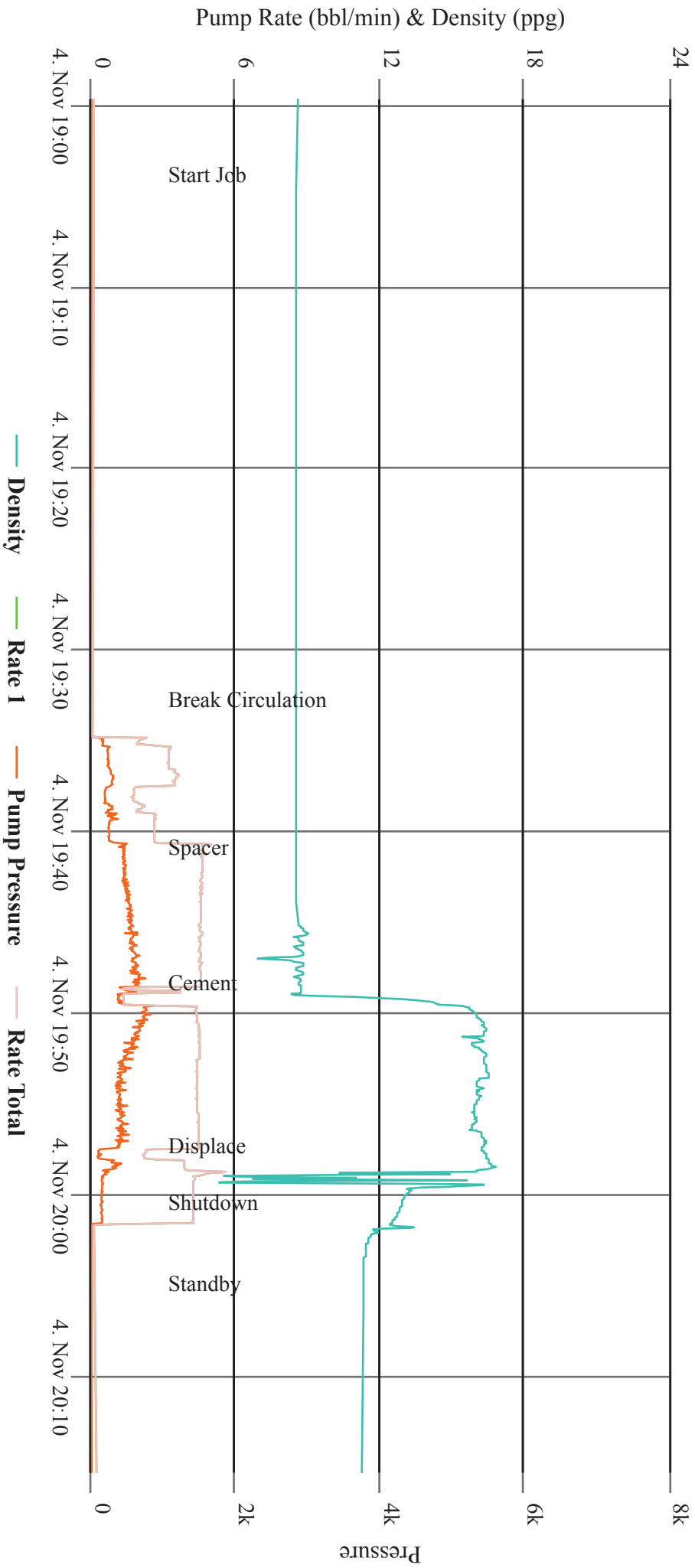
AIRLINE ROAD STATE 15-12 (PLUG 1)

CEMENTING



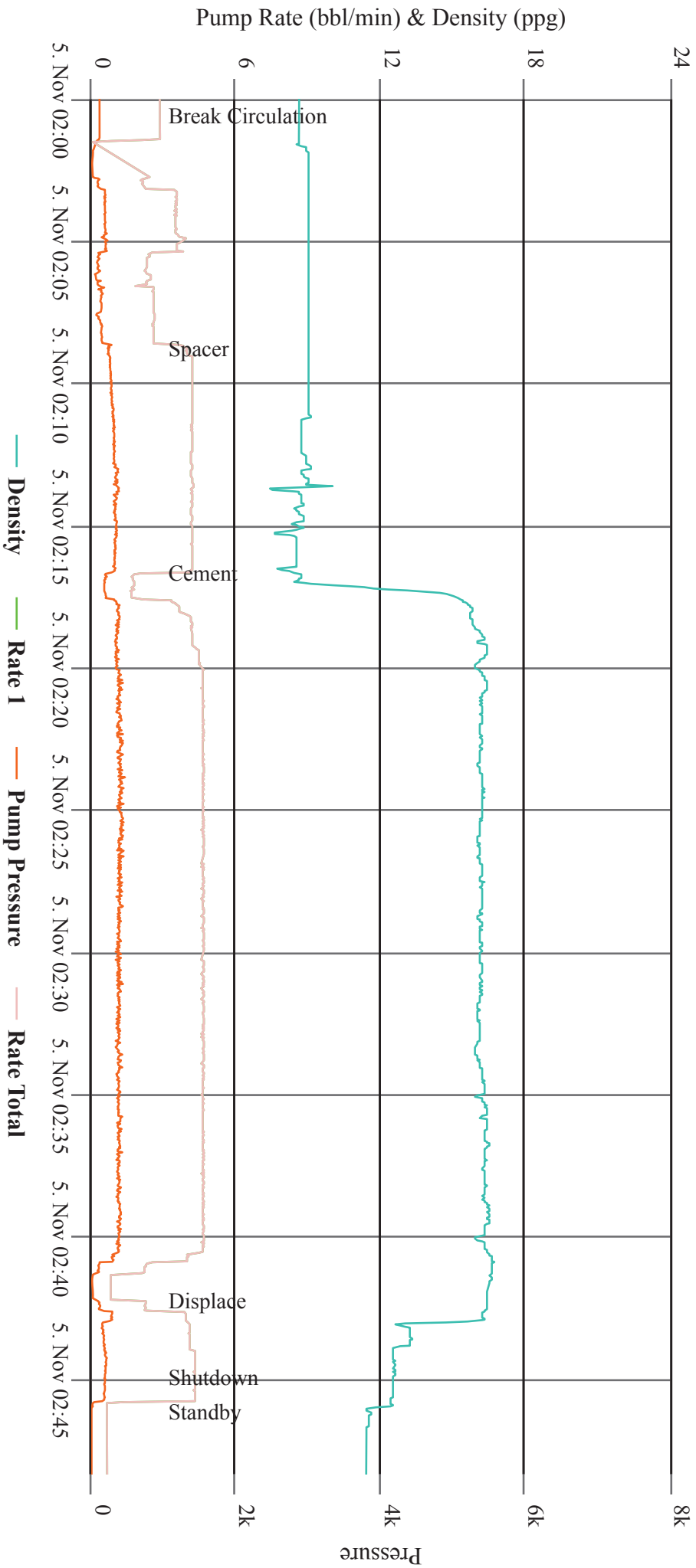
AIRLINE ROAD STATE 15-12 (PLUG 2)

CEMENTING



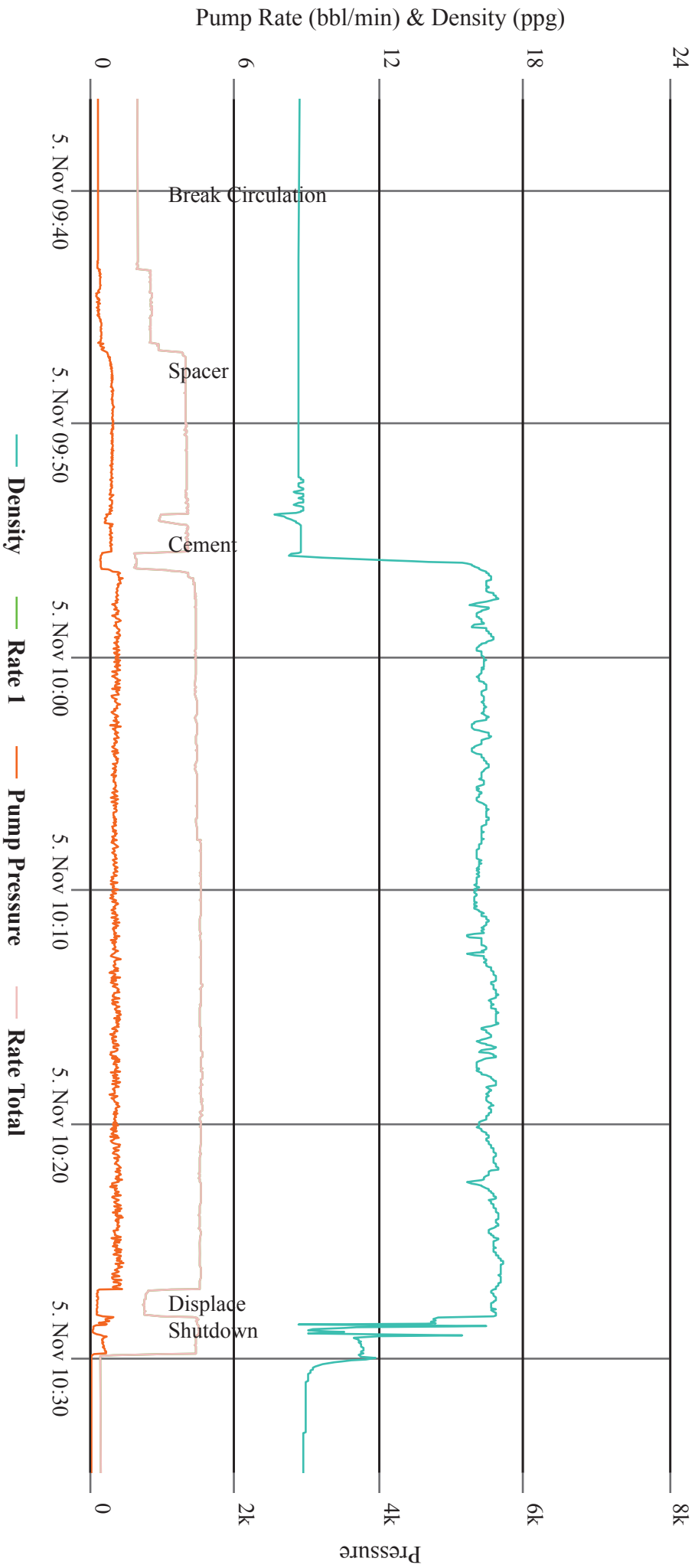
AIRLINE ROAD STATE 15-12 (PLUG 3)

CEMENTING



AIRLINE ROAD STATE 15-12 (PLUG 4)

CEMENTING



AIRLINE ROAD STATE 15-12 (PLUG 5)

CEMENTING

