

**INITIAL DECOMMISSIONING REPORT
SHABLE FEDERAL LB33-78HN FLOWLINE**

ECMC SPILL TRACKING # 491496

ECMC REMEDIATION # 27519

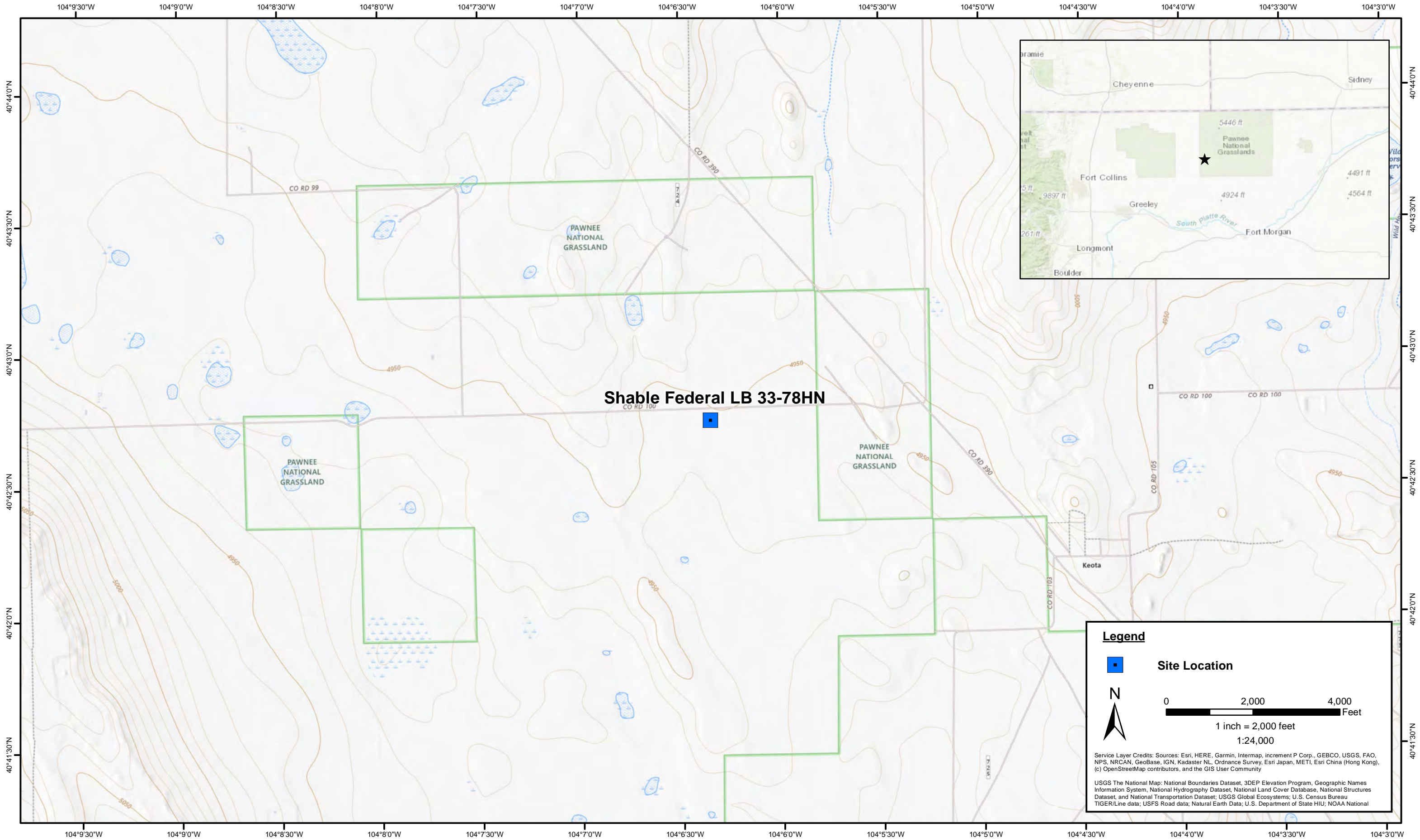


1099 18th Street
Suite 1500
Denver, CO 80202

Prepared by:



4725 Independence Street
Wheat Ridge, CO 80033



DATE:	September 2025
DESIGNED BY:	J. Whritenour
DRAWN BY:	J. Woffinden



Tasman, Inc.
4725 Independence St.
Wheat Ridge, CO 80033






Noble Energy, Inc - 100322 - DJ Basin
Shable Federal LB 33-78HN
 NWNW, Section 33, Township 9 North, Range 60 West
 Weld County, Colorado

Site Location Map

Figure
1



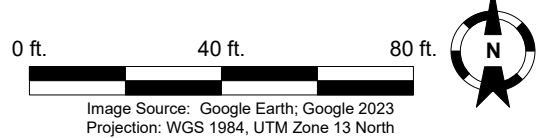
Legend

-  Soil Sample Location – Field Screen (Collected via Trimble GPS)
-  Soil Sample Location – Lab Analyzed (Collected via Trimble GPS)
-  Soil Sample Location – GSSL Exceedance (Collected via Trimble GPS)
-  Soil Sample Location – RSSL Exceedance (Collected via Trimble GPS)
-  Flowline Removed (Collected via Trimble GPS)

Notes

- 1) All locations are approximate unless otherwise noted.
- 2) Buried infrastructure has been spatially projected.
- 3) Color coded sample exceedances are in reference to ECMC Table 915-1 Organic Compounds in Soil and TPH.

GPS – Global Positioning System
 PID – Photoionization Detector
 ppm – Parts per million
 GSSL – Protection of Groundwater Soil Screening Levels
 RSSLs – Residential Soil Screening Levels



DATE: September 18, 2025
 DESIGNED BY: J. Whritenour
 DRAWN BY: E. Hossink



**Noble Energy, Inc – 100322 – DJ Basin
 Shable Federal LB33-78HN Flowline**
 NWNW, Section 33, Township 9 North, Range 60 West
 Weld County, Colorado

**SOIL SAMPLE
 LOCATION MAP
 (FLOWLINE)**

**FIGURE
 2**

TABLE 1
FIELD DATA SUMMARY TABLE
NOBLE ENERGY, INC. - 100322
SHABLE FEDERAL LB33-78HN FLOWLINE, WELD COUNTY, COLORADO
REM # 27519



Sample ID	Sample Date	Depth (ft. bgs)	GPS Data ¹		PDOP Value	VOC Concentration ² (ppm)
			Latitude/Longitude			
FL01-01@2.5'	08/25/2025	2.5	40.712904	-104.104754	0.8	0.6
FL01-02@2.5'	08/25/2025	2.5	40.712903	-104.105192	0.8	16.2
FL01-03@2.5'	08/25/2025	2.5	40.712613	-104.105492	0.8	18.1
FL01R-W@4'	08/25/2025	4	40.712431	-104.105879	0.8	6.7

Notes:

1. Global Positioning System (GPS) data is provided in decimal degrees using North American Datum (NAD) 83 UTM Zone 13 North.
2. Volatile organic compound (VOC) concentrations are measured in the field using a photoionization detector (PID).

PDOP = Position Dilution of Precision

ppm = Parts per million

ft. = Feet

bgs = Below ground surface

NC = Not collected

NA = Not analyzed

Source material characterization sample, excavated and transported off site for disposal.

Material excavated and transported off site for disposal.

TABLE 2
SUMMARY OF VOLATILE ORGANIC SOIL CHEMISTRY DATA
NOBLE ENERGY, INC. - 100322
SHABLE FEDERAL LB33-78HN FLOWLINE, WELD COUNTY, COLORADO
REM # 27519



Sample ID	Sample Date	Depth (ft. bgs)	Benzene (mg/kg)	Toluene (mg/kg)	Ethyl-Benzene (mg/kg)	Xylenes (mg/kg)	1,2,4-Trimethyl-Benzene (mg/kg)	1,3,5-Trimethyl-Benzene (mg/kg)	Naphthalene (mg/kg)	TPH (mg/kg)	TPH GRO (mg/kg)	TPH DRO (mg/kg)	TPH ORO (mg/kg)
ECMC Table 915-1 Limits (Residential SSL)			1.2	490	5.8	58	30	27	2	500	500**		
ECMC Table 915-1 Limits (Protection of Groundwater SSL)			0.0026	0.69	0.78	9.9	0.0081	0.0087	0.0038	500	500**		
FL01-01@2.5'	08/25/2025	2.5	<0.0012	<0.0023	<0.0023	<0.0023	<0.0023	<0.0023	<0.0023	<12	<0.23	<4.6	<6.9
FL01-02@2.5'	08/25/2025	2.5	<0.0011	<0.0023	<0.0023	<0.0023	<0.0023	<0.0023	<0.0024	16.4	<0.23	8.01	8.37
FL01-03@2.5'	08/25/2025	2.5	<0.0011	<0.0023	<0.0023	<0.0023	<0.0023	<0.0023	<0.0025	30.9	<0.23	14.5	16.4
FL01R-W@4'	08/25/2025	4	<0.0011	<0.0023	<0.0023	<0.0023	<0.0023	<0.0023	<0.0024	<12	<0.23	<4.6	<6.9

Notes:

- 1. Bold** values exceed the ECMC Table 915-1 limit(s).
- Red & blue highlighted soil analytical values indicate an exceedance of the referenced soil screening level (SSL).
- ** Summation of GRO+DRO+ORO must be less than 500 mg/kg.

ECMC = Energy and Carbon Management Commission

(<) = Analytical result is less than the indicated laboratory reporting limit.

TPH-GRO = Total petroleum hydrocarbons - gasoline range organics

TPH-DRO = Total petroleum hydrocarbons - diesel range organics

TPH-ORO = Total petroleum hydrocarbons - oil range organics

mg/kg = Milligrams per kilogram

ft. = Feet

bgs = Below ground surface

NA = Not analyzed

Source material characterization sample, excavated and transported off site for disposal.

Material excavated and transported off site for disposal.

TABLE 3
SUMMARY OF POLYCYCLIC AROMATIC HYDROCARBON SOIL CHEMISTRY DATA
NOBLE ENERGY, INC. - 100322
SHABLE FEDERAL LB33-78HN FLOWLINE, WELD COUNTY, COLORADO
REM # 27519



Sample ID	Sample Date	Depth (ft. bgs)	Acenaphthene (mg/kg)	Anthracene (mg/kg)	Benzo (a) Anthracene (mg/kg)	Benzo (a) Pyrene (mg/kg)	Benzo (b) Fluoranthene (mg/kg)	Benzo (k) Fluoranthene (mg/kg)	Chrysene (mg/kg)	Dibenzo (a,h) Anthracene (mg/kg)	Fluoranthene (mg/kg)	Fluorene (mg/kg)	Indeno (1,2,3-cd) Pyrene (mg/kg)	Pyrene (mg/kg)	1-Methyl-Naphthalene (mg/kg)	2-Methyl-Naphthalene (mg/kg)
ECMC Table 915-1 Limits (Residential SSL)			360	1800	1.1	0.11	1.1	11	110	0.11	240	240	1.1	180	18	24
ECMC Table 915-1 Limits (Protection of Groundwater SSL)			0.55	5.8	0.011	0.24	0.3	2.9	9	0.096	8.9	0.54	0.98	1.3	0.006	0.019
FL01-01@2.5'	8/25/2025	2.5	<0.0047	<0.0047	<0.0059	<0.0047	<0.0047	<0.0047	<0.0047	<0.0047	<0.0047	<0.0047	<0.0047	<0.0047	<0.0047	<0.0047
FL01-02@2.5'	8/25/2025	2.5	<0.0048	<0.0048	<0.0060	<0.0048	<0.0048	<0.0048	<0.0048	<0.0048	<0.0048	<0.0048	<0.0048	<0.0048	<0.0048	<0.0048
FL01-03@2.5'	8/25/2025	2.5	<0.0049	<0.0049	<0.0061	<0.0049	<0.0049	<0.0049	<0.0049	<0.0049	<0.0049	0.0052	<0.0049	<0.0049	0.0163	0.0134
FL01R-W@4'	8/25/2025	4	<0.0048	<0.0048	<0.0060	<0.0048	<0.0048	<0.0048	<0.0048	<0.0048	<0.0048	<0.0048	<0.0048	<0.0048	<0.0048	<0.0048

Notes:

- 1. Bold** values exceed the ECMC Table 915-1 limit(s).
- Red & blue highlighted soil analytical values indicate an exceedance of the referenced soil screening level (SSL).
- * Indicates laboratory minimum detection limit in excess of SSL.

ECMC = Energy and Carbon Management Commission

(-) = Analytical result is less than the indicated laboratory reporting limit.

mg/kg = Milligrams per kilogram

ft. = Feet

bgs = Below ground surface

NA = Not analyzed

Source material characterization sample, excavated and transported off site for disposal.

Material excavated and transported off site for disposal.

TABLE 4
SUMMARY OF SOIL SUITABILITY FOR RECLAMATION
NOBLE ENERGY, INC. - 100322
SHABLE FEDERAL LB33-78HN FLOWLINE, WELD COUNTY, COLORADO
REM # 27519



Sample ID	Sample Date	Depth (ft. bgs)	pH (Standard Units)	EC (mmhos/cm)	SAR (Standard Units)	Boron (mg/L)
ECMC Table 915-1 Soil Suitability Limits			6 - 8.3	<4	<6	2
FL01-01@2.5'	8/25/2025	2.5	7.92	0.61	2.03	<0.50
FL01-02@2.5'	8/25/2025	2.5	7.60	1.8	4.79	<0.50
FL01-03@2.5'	8/25/2025	2.5	7.86	1.0	4.56	<0.50
FL01R-W@4'	8/25/2025	4	7.92	0.44	0.395	<0.50

Notes:

1. **Bold** faced values exceed the ECMC Table 915-1 limit(s), but are within background concentrations.
2. **Bold** faced values exceed the ECMC Table 915-1 limit(s) and native background concentrations.
3. Brown highlighted soil analytical values indicate a regulatory exceedance.

ECMC = Energy and Carbon Management Commission

(<) = Analytical result is less than the indicated laboratory reporting limit.

mg/L = Milligrams per liter

ft. = Feet

bgs = Below ground surface

NA = Not analyzed

EC = Electrical conductivity

SAR = Sodium adsorption ratio

mmhos/cm = Millimohs per centimeter

Source material characterization sample, excavated and transported off site for disposal.

Material excavated and transported off site for disposal.

TABLE 5
SUMMARY OF METALS IN SOIL CHEMISTRY DATA
NOBLE ENERGY, INC. - 100322
SHABLE FEDERAL LB33-78HN FLOWLINE, WELD COUNTY, COLORADO
REM # 27519



Sample ID	Sample Date	Depth (ft. bgs)	Arsenic (mg/kg)	Barium (mg/kg)	Cadmium (mg/kg)	Chromium (VI) ⁶ (mg/kg)	Copper (mg/kg)	Lead (mg/kg)	Nickel (mg/kg)	Selenium (mg/kg)	Silver (mg/kg)	Zinc (mg/kg)
ECMC Table 915-1 Limits (Residential SSL)			0.68	15000	71	0.3	3100	400	1500	390	390	23000
ECMC Table 915-1 Limits (Protection of Groundwater SSL)			0.29	82	0.38	0.00067	46	14	26	0.26	0.8	370
FL01-01@2.5'	8/25/2025	2.5	3.6	263	0.12	<0.48*	4.5	10.9	3.0	<0.23	<0.057	13.4
FL01-02@2.5'	8/25/2025	2.5	3.5	259	0.13	<0.47*	4.9	8.6	3.6	<0.24	<0.059	13.5
FL01-03@2.5'	8/25/2025	2.5	3.7	332	0.15	<0.48*	5.6	8.6	4.5	<0.24	<0.059	16.3
FL01R-W@4'	8/25/2025	4	3.0	424	0.15	<0.48*	6.2	13.2	4.1	<0.24	<0.060	16.5

Notes:

1. **Bold** faced values exceed the ECMC Table 915-1 limit(s), but are within 1.25x background concentrations.
2. **Red** faced values exceed the ECMC Table 915-1 limit(s) and native background concentrations.
3. Red & blue highlighted soil analytical values indicate an exceedance of the referenced soil screening level (SSL).
4. Reporting limit used for 1.25 multiplier when all background results for a specific metal are non-detect.
5. * Indicates laboratory minimum detection limit in excess of SSL.
6. Compound falls within the ECMC Table 915-1 footnote 9.

ECMC = Energy & Carbon Management Commission

(<) = Analytical result is less than the indicated laboratory reporting limit.

mg/kg = Milligrams per kilogram

ft. = Feet

bgs = Below ground surface

NA = Not analyzed

Source material characterization sample, excavated and transported off site for disposal.

Material excavated and transported off site for disposal.



FLOWLINE ABANDONMENT FORM

CLIENT: Noble Energy		SITE NAME: Shable Federal LB33-78HN					DATE: 8/25/2025	REM. PROJECT #: 27519	WEATHER: Cloudy, 75°	
SITE DIRECTIONS: CR390 and CR105, 1.7NW, 1.0 W, 400 ft S into							JOB#: 10717			
LEGALS AND LAT/LONG: 40.712493, -104.104781							TASMAN PERSONNEL: E. Card			
SOIL TYPES: Well Graded Sand - SW							SURFACE GRADIENT: East			
SOIL SAMPLING							FACILITY INFRASTRUCTURE			
Date/Time	Soil Sample ID	PID (ppm)	Visual	Olfactory	Photo?	Grab or Lab Sample?	EQUIPMENT		Quantity	
							Above Ground Storage Tank (AST)			
08-25-2025 13:00	FL01-01@2.5'	0.6	No Staining	No Odor	Yes	Lab	Buried or Partially Buried Vessel			
08-25-2025 13:05	FL01-02@2.5'	16.2	No Staining	No Odor	Yes	Lab	Separator			
08-25-2025 13:13	FL01-03@2.5'	18.1	No Staining	No Odor	Yes	Lab	Emission Control Device (ECD)			
08-25-2025 13:20	FL01R-W@4'	6.7	No Staining	No Odor	Yes	Lab	Dump Line			
							Wellhead			
							Flowline		1 <input checked="" type="checkbox"/>	
							Other:			
							Soil Loads Removed			
							IMPACTED SOIL IDENTIFIED?			
							ESTIMATED VOLUME OF IMPACTS:			
							Date	Number	CY	
							Total Removed		0 0	
							Disposal Facility:			
							Groundwater Recovery			
							DATE GW ENCOUNTERED:		DEPTH:	
							GROUNDWATER IN CONTACT WITH IMPACTED SOIL?			
							LNAPL OR SHEEN OBSERVED ON GW?			
GROUNDWATER SAMPLING							Date	BBLs		
Date/Time	Groundwater Sample ID	Depth Collected	Turbid?	Sheen?	Odor?	Photo?				
							Total Removed		0	
							Disposal Facility:			

Chevron Rockies Business Unit

Field Qualitative Criteria for ECMC Reporting Associated with the Discovery of Potentially Impacted Material

If answered **Yes** to any of the questions listed below, this may suggest the presence of potentially impacted materials as outlined in ECMC Rule 912. Out of an abundance of caution, a “Yes” response will be reported to the ECMC within 24 hours after discovery, regardless of laboratory results. **Immediately notify the RBU Remediation Team.** Include a copy of this Field Qualitative Spill Criteria Checklist in the field Report.

Please answer the following questions when on-site:

1. Is there visible petroleum hydrocarbon staining in the soil? No_____
2. Does the soil sample from the stained area have a petroleum odor? No_____
3. Is there a petroleum hydrocarbon sheen on the nearby surface water? No_____
4. Does there appear to be a sheen of the surface of accumulated groundwater or seeps within the excavation indicative of petroleum? No_____
5. Is stained soil in contact with groundwater? No_____

Please Include relevant photos of the site conditions for items 1-5.

Location name: Shable Federal LB33-78HN

Please Circle Facility Type: Flowline



Date: 8/25/2025

GENERAL OBSERVATION FORM

Site Area/AOC: Shable Federal LB33-78HN Client: Noble Energy

Daily Forecast/Weather: Cloudy, 75° Personnel: E. Card

Task/Location Description: Flowline Removal

Time	Description
09:00	Arrived on site, completed JSA
	Flowline was fully removed.
	Common trenched with Shable LB 32-68HN API 123-36800 REM # 27521
	between sample locations FL01-02 and FL01-01
	Sample location FL01-02 collected under this project for both flowlines
	Flowline path mapped with Trimble GPS
	Backgrounds not collected due to time constraints
	Associated Tank battery is Shable Federal LB29-62HN
16:00	Completed COC and left site

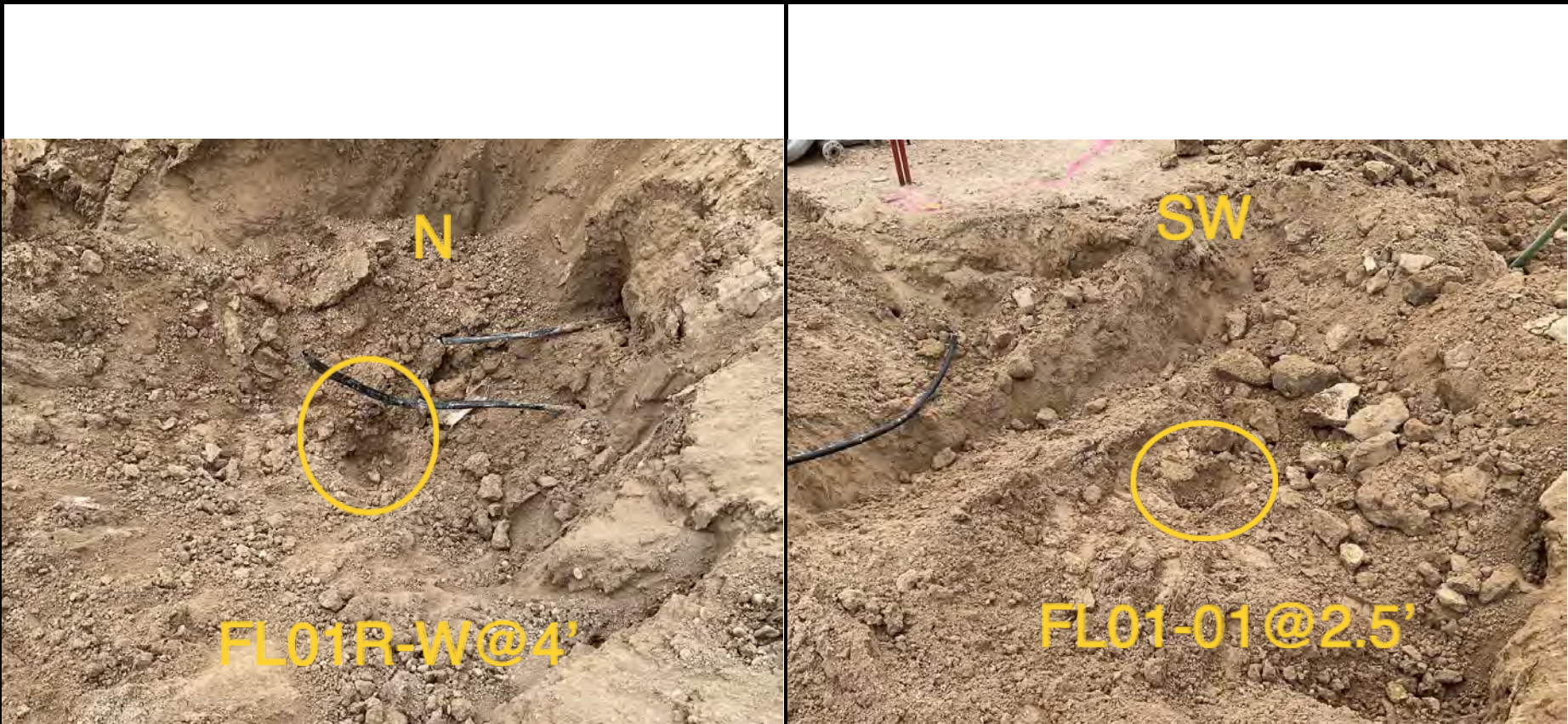
Need a photo log?



Need another General Observation Form?



Photographic Log



Equipment ID:		Equipment Type:	
Material:	Volume:	Contents:	
Notes/Conditions:			

Equipment ID:		Equipment Type:	
Material:	Volume:	Contents:	
Notes/Conditions:			



Photographic Log



Equipment ID:		Equipment Type:	
Material:	Volume:	Contents:	
Notes/Conditions:			

Equipment ID:		Equipment Type:	
Material:	Volume:	Contents:	
Notes/Conditions:			