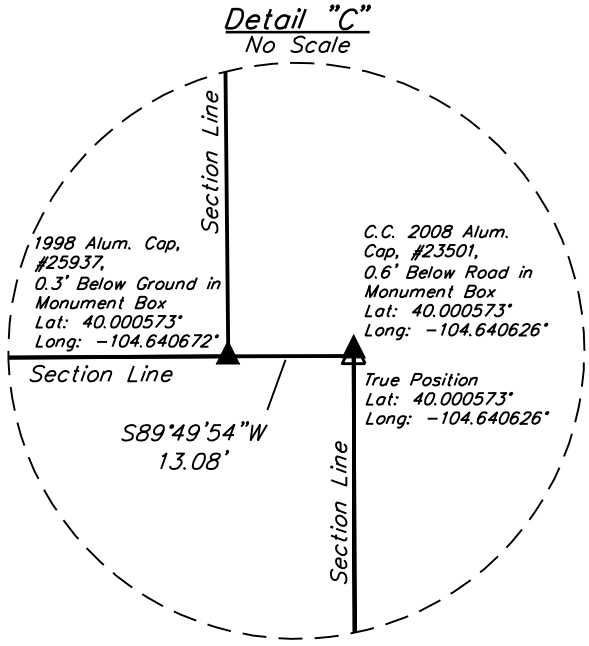
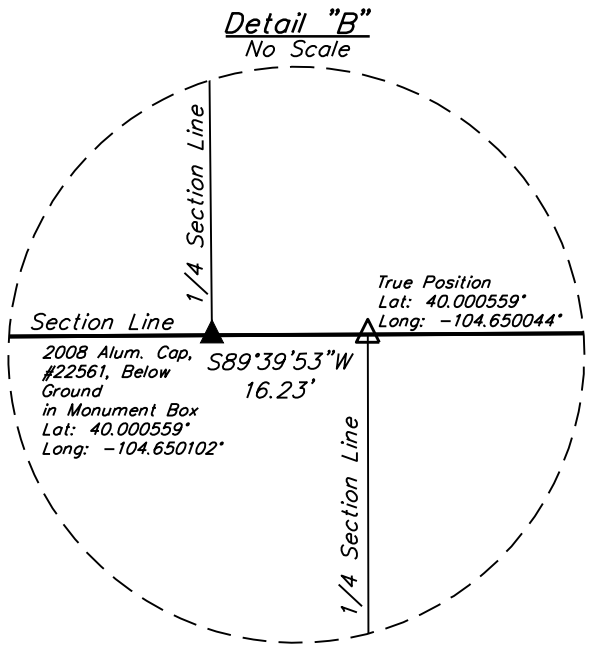
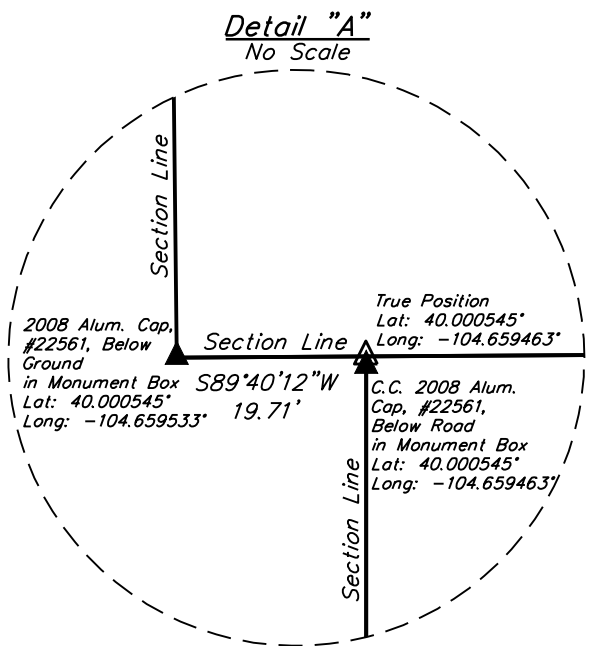
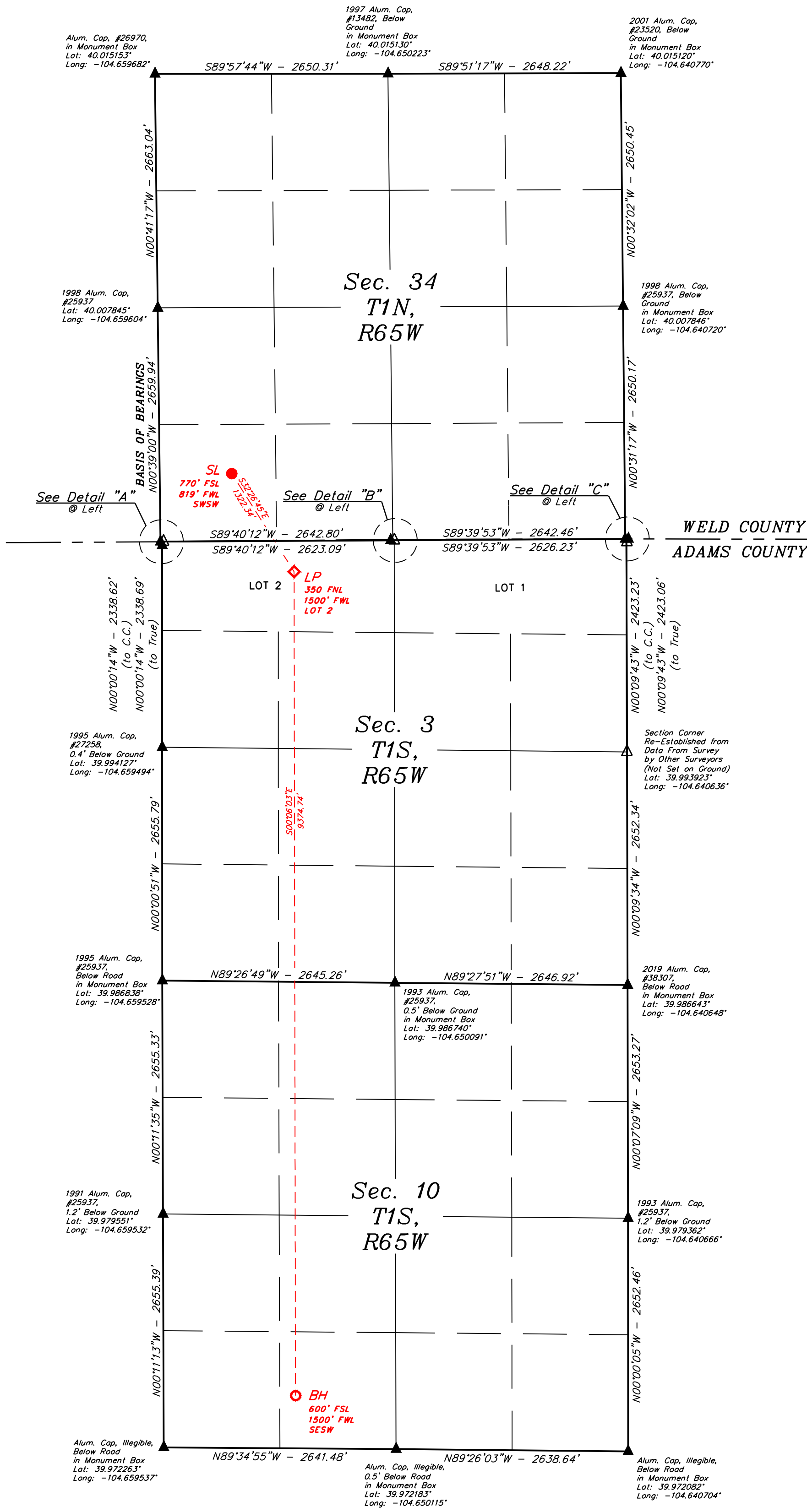


- LEGEND:**
- = SURFACE LOCATION (SL).
 - ◆ = LANDING POINT (LP).
 - = BOTTOM HOLE (BH).
 - ▲ = SECTION CORNERS LOCATED (NAD 83)
 - △ = SECTION CORNERS RE-ESTABLISHED (Not Set on Ground.) (NAD 83)

NOTE:
Distances referenced on plat to section lines are perpendicular.



PDOP = 1.3

EXISTING GROUND ELEVATION = 5137.8'

NAD 83 (SURFACE LOCATION)	
LATITUDE = 40°00'09.59" (40.002663°)	LONGITUDE = -104°39'23.87" (-104.656631°)
STATE PLANE NAD 83 (CO. NORTH)	
N: 1244940.33' E: 3236260.15'	

NAD 83 (LANDING POINT)	
LATITUDE = 39°59'58.53" (39.999593°)	LONGITUDE = -104°39'14.81" (-104.654114°)
STATE PLANE NAD 83 (CO. NORTH)	
N: 1243828.75' E: 3236975.69'	

NAD 83 (BOTTOM HOLE)	
LATITUDE = 39°58'25.91" (39.973864°)	LONGITUDE = -104°39'15.07" (-104.654185°)
STATE PLANE NAD 83 (CO. NORTH)	
N: 1234456.83' E: 3237045.23'	

CERTIFICATE OF REGISTRATION
THIS IS TO CERTIFY THAT THE ABOVE IS A TRUE AND CORRECT COPY OF THE ORIGINAL SURVEY AND THAT THE SAME ARE TRUE AND CORRECT TO THE BEST OF MY KNOWLEDGE AND BELIEF.

REGISTERED LAND SURVEYOR
ORION RICE, J.M.
REG. NO. 28285
STATE OF COLORADO

