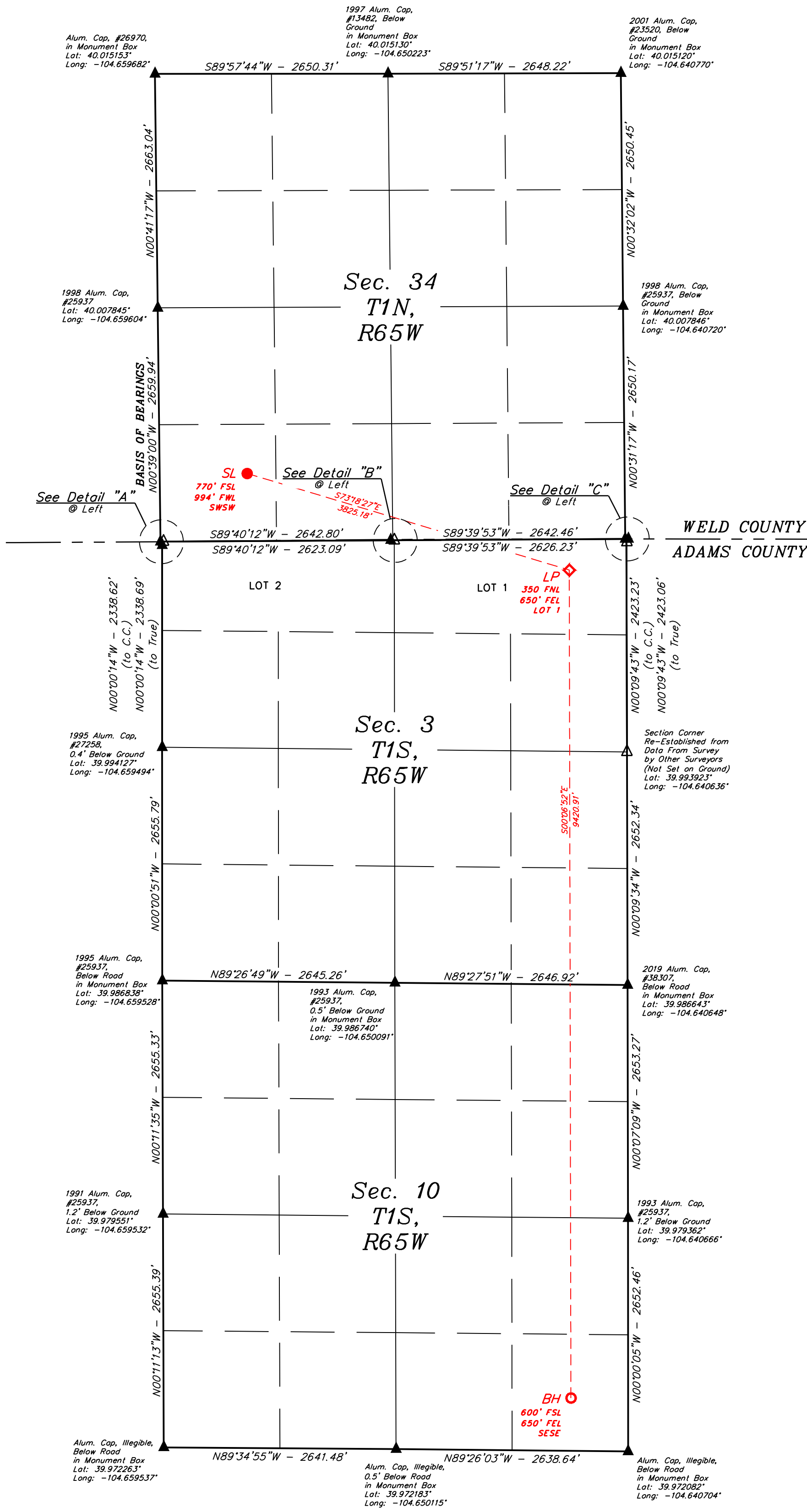
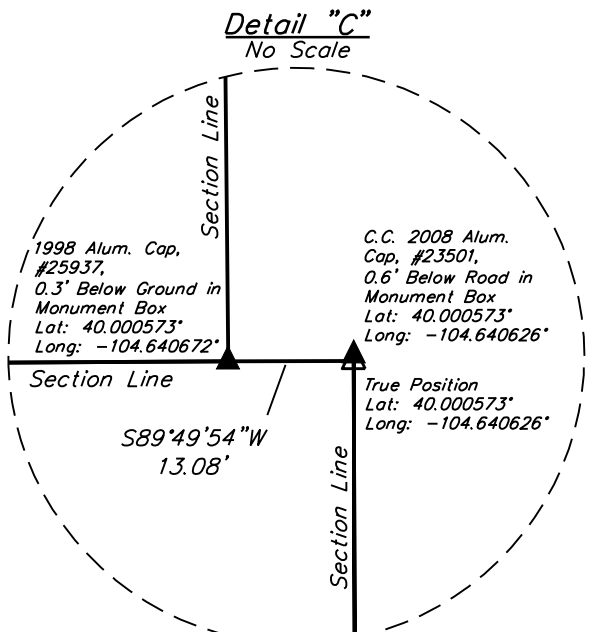
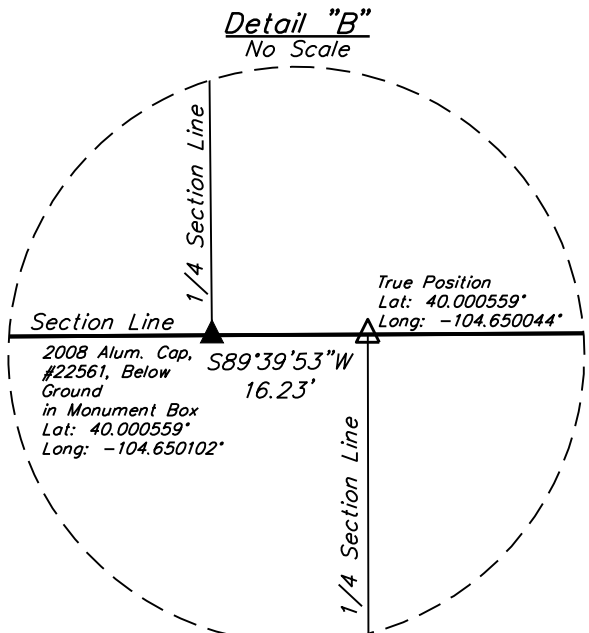
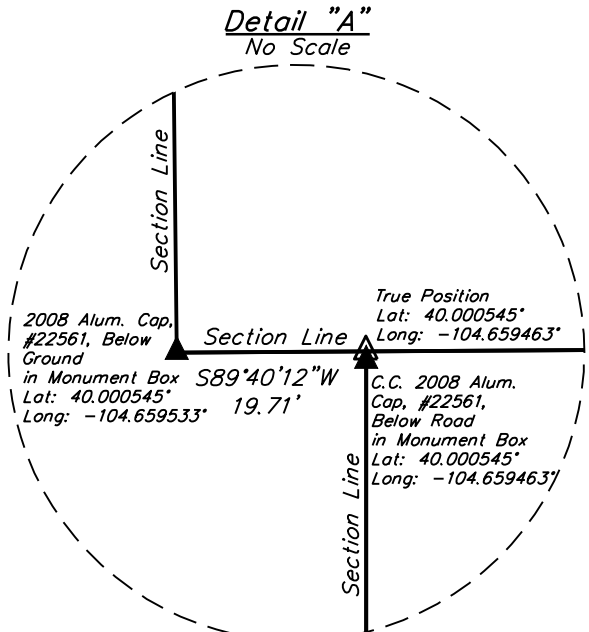


- LEGEND:**
- = SURFACE LOCATION (SL).
  - ◆ = LANDING POINT (LP).
  - = BOTTOM HOLE (BH).
  - ▲ = SECTION CORNERS LOCATED (NAD 83)
  - △ = SECTION CORNERS RE-ESTABLISHED (Not Set on Ground.) (NAD 83)

**NOTE:**  
Distances referenced on plat to section lines are perpendicular.



PDOP = 1.3  
EXISTING GROUND ELEVATION = 5134.9'

NAD 83 (SURFACE LOCATION)	
LATITUDE = 40°00'09.59" (40.002664°)	
LONGITUDE = -104°39'21.62" (-104.650006°)	
STATE PLANE NAD 83 (CO. NORTH)	
N: 1244942.33' E: 3236435.06'	

NAD 83 (LANDING POINT)	
LATITUDE = 39°59'58.59" (39.999609°)	
LONGITUDE = -104°38'34.61" (-104.642947°)	
STATE PLANE NAD 83 (CO. NORTH)	
N: 1243864.65' E: 3240104.20'	

NAD 83 (BOTTOM HOLE)	
LATITUDE = 39°58'25.51" (39.973754°)	
LONGITUDE = -104°38'34.85" (-104.643014°)	
STATE PLANE NAD 83 (CO. NORTH)	
N: 1234446.59' E: 3240176.30'	

BASIS OF ELEVATION  
OPUS SOLUTION GENERATED NAVD 88

UELS, LLC  
Corporate Office \* 85 South 200 East  
Vernal, UT 84078 \* (435) 789-1017



**POCO OPERATING**

JUDY 3-10-8N  
SW 1/4 SW 1/4, SECTION 34, T1N, R65W, 6th P.M.  
WELD COUNTY, COLORADO

SURVEYED BY	ORION RICE, J.M.	10-03-25	SCALE
DRAWN BY	Q.S.J.	10-13-25	1" = 1000'

**WELL LOCATION PLAT**

CERTIFICATE OF REGISTRATION

THIS IS TO CERTIFY THAT THE ABOVE NAMED SURVEYOR HAS BEEN REGISTERED AS A PROFESSIONAL LAND SURVEYOR IN THE STATE OF COLORADO UNDER MY SUPERVISION AND THAT THE SAME ARE TRUE AND CORRECT TO THE BEST OF MY KNOWLEDGE AND BELIEF.

REGISTERED LAND SURVEYOR  
REG. NO. 28285  
STATE OF COLORADO