

Inspection/Audit Photos

Location: QB ENERGY OPERATING LLC FEDERAL #2S-95-15-22 PAD

Location ID: 335858

Date: 11/24/2025



Photo # 4457 Entrance to location



Photo # 4458 Location

Inspection/Audit Photos

Location: QB ENERGY OPERATING LLC FEDERAL #2S-95-15-22 PAD

Location ID: 335858

Date: 11/24/2025



Photo # 4460 Location



Photo # 4462 Location

Inspection/Audit Photos

Location: QB ENERGY OPERATING LLC FEDERAL #2S-95-15-22 PAD

Location ID: 335858

Date: 11/24/2025

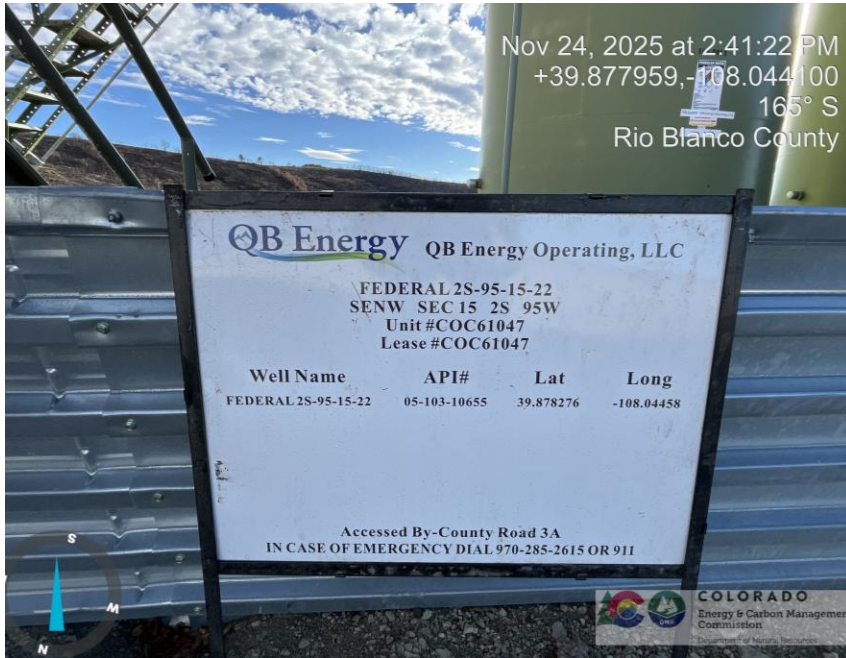


Photo # 4463 Location



Photo # 4472 Location

Inspection/Audit Photos

Location: QB ENERGY OPERATING LLC FEDERAL #2S-95-15-22 PAD

Location ID: 335858

Date: 11/24/2025



Photo # 4477 Location



Photo # 4491 SE corner of location

Inspection/Audit Photos

Location: QB ENERGY OPERATING LLC FEDERAL #2S-95-15-22 PAD

Location ID: 335858

Date: 11/24/2025



Photo # 4492 NE corner of location



Photo # 4494 SW corner of location

Inspection/Audit Photos

Location: QB ENERGY OPERATING LLC FEDERAL #2S-95-15-22 PAD

Location ID: 335858

Date: 11/24/2025



Photo # 4495 NW corner of location



Photo # 4471 Vent in pump house open to wildlife/available for entry by wildlife

Inspection/Audit Photos

Location: QB ENERGY OPERATING LLC FEDERAL #2S-95-15-22 PAD

Location ID: 335858

Date: 11/24/2025



Photo # 4487 Unused flowlines lack lockout tagout (OOSLAT)



Photo # 4488 Unused flowline lack lockout tagout (OOSLAT)

Inspection/Audit Photos

Location: QB ENERGY OPERATING LLC FEDERAL #2S-95-15-22 PAD

Location ID: 335858

Date: 11/24/2025



Photo # 4489 Unused flowline lack lockout tagout (OOSLAT



Photo # 4493 Unused flowline lack lockout tagout (OOSLAT

Inspection/Audit Photos

Location: QB ENERGY OPERATING LLC FEDERAL #2S-95-15-22 PAD

Location ID: 335858

Date: 11/24/2025



Photo # 4497 Sediment migrating off location and choking off vegetation/insufficient BMP's



Photo # 4498 Sediment migrating off location and choking off vegetation/insufficient BMP's

Inspection/Audit Photos

Location: QB ENERGY OPERATING LLC FEDERAL #2S-95-15-22 PAD

Location ID: 335858

Date: 11/24/2025



Photo # 4501 Insufficient erosion control on lease road; rill erosion cutting down lease road/insufficient BMP's



Photo # 4503 Rill erosion & transport of sediment on cut slope/sediment migrating onto location/insufficient BMP's

Inspection/Audit Photos

Location: QB ENERGY OPERATING LLC FEDERAL #2S-95-15-22 PAD

Location ID: 335858

Date: 11/24/2025



Photo # 4504 Rill erosion & transport of sediment on cut slope/sediment migrating onto location/insufficient BMP's



Photo # 4505 Rill erosion & transport of sediment on cut slope/sediment migrating onto location/insufficient BMP's

Inspection/Audit Photos

Location: QB ENERGY OPERATING LLC FEDERAL #2S-95-15-22 PAD

Location ID: 335858

Date: 11/24/2025



Photo # 4506 Rill erosion & transport of sediment on cut slope/sediment migrating onto location/insufficient BMP's

Photo # 4507 Rill erosion & transport of sediment on cut slope/sediment migrating onto location/insufficient BMP's

Inspection/Audit Photos

Location: QB ENERGY OPERATING LLC FEDERAL #2S-95-15-22 PAD

Location ID: 335858

Date: 11/24/2025



Photo # 4508 Rill erosion & transport of sediment on cut slope/sediment migrating onto location/insufficient BMP's