



SUMMARY - FRACTURING ZONE 1 TO 1

Start Time: 10/4/25 6:00 AM
 End Time: 10/4/25 8:27 AM

AFE#: 0
 County: 0
 Formation: Williams Fork

SO Number: 250343U.F16.S1
 Program #: 250343U.F16-1
 District: Grand Junction
 State: Colorado

TREATMENT

Volume				Pressures			Slurry Rate		Exposure	
Clean [Bbl]	Clean [gal]	Slurry [Bbl]	Slurry [gal]	Wireline [Bbl]	Pad [Bbl]	Max [psi]	Average [psi]	Max [bbl/min]	Average [bbl/min]	Time [hh:mm:ss]
9,999.3	419,972	9,999.3	419,972	0.0	9,999.3	5,778	4,888	70.9	66.3	2:30:47

TECHNICAL

Treatment					Shut in Pressure					
Opening [psi]	Annulus [psi]	Load Hole [Bbl]	Break [psi]	Rate Break [bbl/min]	ISIP [psi]	1 Min [psi]	5 Min [psi]	10 Min [psi]	15 Min [psi]	Frac Gradient [psi/ft]
90	0	0	3,442	9	1,205	0	0	0	0	0.55

Flush Volumes			Flush Pressures		Perforations			Miscellaneous		
Flush [Bbl]	Flush [gal]	Over/UnderFlus [Bbl]	Max [psi]	Average [psi]	Displacement [Bbl]	Top Perf [ft]	Bottom Perf [ft]	TVD [ft]	Aux psi	Aux psi
0.0	0	-153.5	0	0	153.5	9,879	10,161	9,879		

MATERIALS

Note: Percent variance is reported as 0% if variance is within 1 gallon

Chemicals				Proppants					
Chemical Name	Digital [gal]	Physical [gal]	Variance [%]	Type	Pumped [lb]	Designed [lb]	Variance [%]	Minimum Conc. [ppg]	Maximum Conc. [ppg]
CalVisc™ HB 6870, High Viscosity Friction Reducer	63.4	63.0	0.0%						
Fincide GQ 12 A, Biocide	109.8	110.0	0.0%						
Total Proppant					0	0			

FLUIDS

Base Fluid(s)		
Fluid Type	Amount [Bbl]	Amount [gal]
Fresh Water	9,999.3	419,972
Total Fluid	9,999.3	419,972
	Amount [Bbl]	Amount [gal]
Total Clean Frac	9,999.3	419,972.1
Total Clean Wireline	-	-
Total Clean Fluid	9,999.3	419,972.1

Fluid System(s)		
Type	Amount [Bbl]	Amount [gal]
CWS-600	9,999.3	419,972
CalVisc™	0.0	0
Total Fluid	9,999.3	419,972

Stage Description		
Type	Amount [Bbl]	Amount [gal]
Pad	9,999.3	419,972
Total Fluid	9,999.3	419,972



SUMMARY - FRACTURING ZONE 2 TO 2

Start Time: 10/4/25 6:28 PM
 End Time: 10/4/25 8:44 PM

AFE#: 0
 County: 0
 Formation: Williams Fork

SO Number: 250343U.F16.S1
 Program #: 250343U.F16-1
 District: Grand Junction
 State: Colorado

TREATMENT

Volume				Pressures			Slurry Rate		Exposure	
Clean [Bbl]	Clean [gal]	Slurry [Bbl]	Slurry [gal]	Wireline [Bbl]	Pad [Bbl]	Max [psi]	Average [psi]	Max [bbl/min]	Average [bbl/min]	Time [hh:mm:ss]
10,000.2	420,006	10,000.2	420,006	0.0	10,000.2	6,253	5,587	80.5	75.9	2:11:46

TECHNICAL

Treatment					Shut in Pressure					
Opening [psi]	Annulus [psi]	Load Hole [Bbl]	Break [psi]	Rate Break [bbl/min]	ISIP [psi]	1 Min [psi]	5 Min [psi]	10 Min [psi]	15 Min [psi]	Frac Gradient [psi/ft]
721	0	0	1,979	10	1,178	0	0	0	0	0.56

Flush Volumes			Flush Pressures		Perforations			Miscellaneous		
Flush [Bbl]	Flush [gal]	Over/UnderFlus [Bbl]	Max [psi]	Average [psi]	Displacement [Bbl]	Top Perf [ft]	Bottom Perf [ft]	TVD [ft]	Aux psi	Aux psi
0.0	0	-148.8	0	0	148.8	9,573	9,849	9,573		

MATERIALS

Note: Percent variance is reported as 0% if variance is within 1 gallon

Chemicals				Proppants					
Chemical Name	Digital [gal]	Physical [gal]	Variance [%]	Type	Pumped [lb]	Designed [lb]	Variance [%]	Minimum Conc. [ppg]	Maximum Conc. [ppg]
CalVisc™ HB 6870, High Viscosity Friction Reducer	67.1	67.0	0.0%						
Fincide GQ 12 A, Biocide	107.2	107.0	0.0%						
Total Proppant					0	0			

FLUIDS

Base Fluid(s)		
Fluid Type	Amount [Bbl]	Amount [gal]
Fresh Water	10,000.2	420,006
Total Fluid	10,000.2	420,006
Total Clean Fluid		
Fluid Type	Amount [Bbl]	Amount [gal]
Total Clean Frac	10,000.2	420,006.5
Total Clean Wireline	-	-
Total Clean Fluid	10,000.2	420,006.5

Fluid System(s)		
Type	Amount [Bbl]	Amount [gal]
CWS-600	10,000.2	420,006
CalVisc™	0.0	0
Total Fluid	10,000.2	420,006

Stage Description		
Type	Amount [Bbl]	Amount [gal]
Pad	10,000.2	420,006
Total Fluid	10,000.2	420,006



SUMMARY - FRACTURING ZONE 3 TO 3

Start Time: 10/5/25 4:46 AM
 End Time: 10/5/25 6:58 AM

AFE#: 0
 County: 0
 Formation: Williams Fork

SO Number: 250343U.F16.S1
 Program #: 250343U.F16-1
 District: Grand Junction
 State: Colorado

TREATMENT

Volume				Pressures			Slurry Rate		Exposure	
Clean [Bbl]	Clean [gal]	Slurry [Bbl]	Slurry [gal]	Wireline [Bbl]	Pad [Bbl]	Max [psi]	Average [psi]	Max [bbl/min]	Average [bbl/min]	Time [hh:mm:ss]
10,000.8	420,035	10,000.8	420,035	0.0	10,000.8	5,244	5,004	80.4	77.4	2:09:13

TECHNICAL

Treatment					Shut in Pressure					
Opening [psi]	Annulus [psi]	Load Hole [Bbl]	Break [psi]	Rate Break [bbl/min]	ISIP [psi]	1 Min [psi]	5 Min [psi]	10 Min [psi]	15 Min [psi]	Frac Gradient [psi/ft]
458	0	0	1,800	10	989	0	0	0	0	0.54

Flush Volumes			Flush Pressures		Perforations			Miscellaneous		
Flush [Bbl]	Flush [gal]	Over/UnderFlus [Bbl]	Max [psi]	Average [psi]	Displacement [Bbl]	Top Perf [ft]	Bottom Perf [ft]	TVD [ft]	Aux psi	Aux psi
0.0	0	-144.1	0	0	144.1	9,272	9,545	9,272		

MATERIALS

Note: Percent variance is reported as 0% if variance is within 1 gallon

Chemicals				Proppants					
Chemical Name	Digital [gal]	Physical [gal]	Variance [%]	Type	Pumped [lb]	Designed [lb]	Variance [%]	Minimum Conc. [ppg]	Maximum Conc. [ppg]
CalVisc™ HB 6870, High Viscosity Friction Reducer	67.7	68.0	0.0%						
Fincide GQ 12 A, Biocide	105.1	105.0	0.0%						
Total Proppant					0	0			

FLUIDS

Base Fluid(s)		
Fluid Type	Amount [Bbl]	Amount [gal]
Fresh Water	10,000.8	420,035
Total Fluid	10,000.8	420,035

	Amount [Bbl]	Amount [gal]
Total Clean Frac	10,000.8	420,035.2
Total Clean Wireline	-	-
Total Clean Fluid	10,000.8	420,035.2

Fluid System(s)		
Type	Amount [Bbl]	Amount [gal]
CWS-600	10,000.8	420,035
CalVisc™	0.0	0
Total Fluid	10,000.8	420,035

Stage Description		
Type	Amount [Bbl]	Amount [gal]
Pad	10,000.8	420,035
Total Fluid	10,000.8	420,035



SUMMARY - FRACTURING ZONE 4 TO 4

Start Time: 10/5/25 10:40 PM
 End Time: 10/6/25 12:52 AM

AFE#: 0
 County: 0
 Formation: Williams Fork

SO Number: 250343U.F16.S1
 Program #: 250343U.F16-1
 District: Grand Junction
 State: Colorado

TREATMENT

Volume				Pressures			Slurry Rate		Exposure	
Clean [Bbl]	Clean [gal]	Slurry [Bbl]	Slurry [gal]	Wireline [Bbl]	Pad [Bbl]	Max [psi]	Average [psi]	Max [bbl/min]	Average [bbl/min]	Time [hh:mm:ss]
9,999.0	419,956	9,999.0	419,956	0.0	9,999.0	5,487	4,718	80.7	77.2	2:09:36

TECHNICAL

Treatment					Shut in Pressure					
Opening [psi]	Annulus [psi]	Load Hole [Bbl]	Break [psi]	Rate Break [bbl/min]	ISIP [psi]	1 Min [psi]	5 Min [psi]	10 Min [psi]	15 Min [psi]	Frac Gradient [psi/ft]
115	0	0	400	10	603	0	0	0	0	0.50

Flush Volumes			Flush Pressures		Perforations			Miscellaneous		
Flush [Bbl]	Flush [gal]	Over/UnderFlus [Bbl]	Max [psi]	Average [psi]	Displacement [Bbl]	Top Perf [ft]	Bottom Perf [ft]	TVD [ft]	Aux psi	Aux psi
0.0	0	-139.3	0	0	139.3	8,964	9,250	8,964		

MATERIALS

Note: Percent variance is reported as 0% if variance is within 1 gallon

Chemicals				Proppants					
Chemical Name	Digital [gal]	Physical [gal]	Variance [%]	Type	Pumped [lb]	Designed [lb]	Variance [%]	Minimum Conc. [ppg]	Maximum Conc. [ppg]
CalVisc™ HB 6870, High Viscosity Friction Reducer	67.7	68.0	0.0%						
Fincide GQ 12 A, Biocide	103.0	103.0	0.0%						
Total Proppant					0	0			

FLUIDS

Base Fluid(s)		
Fluid Type	Amount [Bbl]	Amount [gal]
Fresh Water	9,999.0	419,956
Total Fluid	9,999.0	419,956
	Amount [Bbl]	Amount [gal]
Total Clean Frac	9,999.0	419,956.3
Total Clean Wireline	-	-
Total Clean Fluid	9,999.0	419,956.3

Fluid System(s)		
Type	Amount [Bbl]	Amount [gal]
CWS-600	9,999.0	419,956
CalVisc™	0.0	0
Total Fluid	9,999.0	419,956

Stage Description		
Type	Amount [Bbl]	Amount [gal]
Pad	9,999.0	419,956
Total Fluid	9,999.0	419,956



SUMMARY - FRACTURING ZONE 5 TO 5

Start Time: 10/6/25 7:50 AM
 End Time: 10/6/25 9:49 AM

AFE#: 0
 County: 0
 Formation: Williams Fork

SO Number: 250343U.F16.S1
 Program #: 250343U.F16-1
 District: Grand Junction
 State: Colorado

TREATMENT

Volume				Pressures			Slurry Rate		Exposure	
Clean [Bbl]	Clean [gal]	Slurry [Bbl]	Slurry [gal]	Wireline [Bbl]	Pad [Bbl]	Max [psi]	Average [psi]	Max [bbl/min]	Average [bbl/min]	Time [hh:mm:ss]
9,002.8	378,117	9,002.8	378,117	0.0	9,002.8	4,713	4,123	79.9	75.4	1:59:23

TECHNICAL

Treatment					Shut in Pressure					
Opening [psi]	Annulus [psi]	Load Hole [Bbl]	Break [psi]	Rate Break [bbl/min]	ISIP [psi]	1 Min [psi]	5 Min [psi]	10 Min [psi]	15 Min [psi]	Frac Gradient [psi/ft]
0	0	0	178	10	231	0	0	0	0	0.46

Flush Volumes			Flush Pressures		Perforations			Miscellaneous		
Flush [Bbl]	Flush [gal]	Over/UnderFlus [Bbl]	Max [psi]	Average [psi]	Displacement [Bbl]	Top Perf [ft]	Bottom Perf [ft]	TVD [ft]	Aux psi	Aux psi
0.0	0	-134.6	0	0	134.6	8,661	8,950	8,661		

MATERIALS

Note: Percent variance is reported as 0% if variance is within 1 gallon

Chemicals				Proppants					
Chemical Name	Digital [gal]	Physical [gal]	Variance [%]	Type	Pumped [lb]	Designed [lb]	Variance [%]	Minimum Conc. [ppg]	Maximum Conc. [ppg]
CalVisc™ HB 6870, High Viscosity Friction Reducer	58.7	59.0	0.0%						
Fincide GQ 12 A, Biocide	94.6	95.0	0.0%						
Total Proppant					0	0			

FLUIDS

Base Fluid(s)			
Fluid Type	Amount [Bbl]	Amount [gal]	
Fresh Water	9,002.8	378,117	
Total Fluid	9,002.8	378,117	
	Amount [Bbl]	Amount [gal]	
Total Clean Frac	9,002.8	378,116.5	
Total Clean Wireline	-	-	
Total Clean Fluid	9,002.8	378,116.5	

Fluid System(s)		
Type	Amount [Bbl]	Amount [gal]
CWS-600	9,002.8	378,117
CalVisc™	0.0	0
Total Fluid	9,002.8	378,117

Stage Description		
Type	Amount [Bbl]	Amount [gal]
Pad	9,002.8	378,117
Total Fluid	9,002.8	378,117



SUMMARY - FRACTURING ZONE 6 TO 6

Start Time: 10/6/25 2:52 PM
 End Time: 10/6/25 4:52 PM

AFE#: 0
 County: 0
 Formation: Williams Fork

SO Number: 250343U.F16.S1
 Program #: 250343U.F16-1
 District: Grand Junction
 State: Colorado

TREATMENT

Volume				Pressures			Slurry Rate		Exposure	
Clean [Bbl]	Clean [gal]	Slurry [Bbl]	Slurry [gal]	Wireline [Bbl]	Pad [Bbl]	Max [psi]	Average [psi]	Max [bbl/min]	Average [bbl/min]	Time [hh:mm:ss]
9,001.7	378,073	9,001.7	378,073	0.0	9,001.7	6,487	4,188	80.2	75.3	1:59:31

TECHNICAL

Treatment					Shut in Pressure					
Opening [psi]	Annulus [psi]	Load Hole [Bbl]	Break [psi]	Rate Break [bbl/min]	ISIP [psi]	1 Min [psi]	5 Min [psi]	10 Min [psi]	15 Min [psi]	Frac Gradient [psi/ft]
0	0	0	1,109	30	238	0	0	0	0	0.46

Flush Volumes			Flush Pressures		Perforations			Miscellaneous		
Flush [Bbl]	Flush [gal]	Over/UnderFlus [Bbl]	Max [psi]	Average [psi]	Displacement [Bbl]	Top Perf [ft]	Bottom Perf [ft]	TVD [ft]	Aux psi	Aux psi
0.0	0	-130.5	0	0	130.5	8,399	8,645	8,399		

MATERIALS

Note: Percent variance is reported as 0% if variance is within 1 gallon

Chemicals				Proppants					
Chemical Name	Digital [gal]	Physical [gal]	Variance [%]	Type	Pumped [lb]	Designed [lb]	Variance [%]	Minimum Conc. [ppg]	Maximum Conc. [ppg]
CalVisc™ HB 6870, High Viscosity Friction Reducer	58.2	58.0	0.0%						
Fincide GQ 12 A, Biocide	95.2	95.0	0.0%						
Total Proppant					0	0			

FLUIDS

Base Fluid(s)			
Fluid Type	Amount [Bbl]	Amount [gal]	
Fresh Water	9,001.7	378,073	
Total Fluid	9,001.7	378,073	
	Amount [Bbl]	Amount [gal]	
Total Clean Frac	9,001.7	378,073.1	
Total Clean Wireline	-	-	
Total Clean Fluid	9,001.7	378,073.1	

Fluid System(s)		
Type	Amount [Bbl]	Amount [gal]
CWS-600	9,001.7	378,073
CalVisc™	0.0	0
Total Fluid	9,001.7	378,073

Stage Description		
Type	Amount [Bbl]	Amount [gal]
Pad	9,001.7	378,073
Total Fluid	9,001.7	378,073



SUMMARY - FRACTURING ZONE 7 TO 7

Start Time: 10/6/25 9:43 PM
 End Time: 10/6/25 11:41 PM

AFE#: 0
 County: 0
 Formation: Williams Fork

SO Number: 250343U.F16.S1
 Program #: 250343U.F16-1
 District: Grand Junction
 State: Colorado

TREATMENT

Volume				Pressures			Slurry Rate		Exposure	
Clean [Bbl]	Clean [gal]	Slurry [Bbl]	Slurry [gal]	Wireline [Bbl]	Pad [Bbl]	Max [psi]	Average [psi]	Max [bbl/min]	Average [bbl/min]	Time [hh:mm:ss]
9,000.1	378,003	9,000.1	378,003	0.0	9,000.1	5,062	4,417	80.5	77.0	1:56:54

TECHNICAL

Treatment					Shut in Pressure					
Opening [psi]	Annulus [psi]	Load Hole [Bbl]	Break [psi]	Rate Break [bbl/min]	ISIP [psi]	1 Min [psi]	5 Min [psi]	10 Min [psi]	15 Min [psi]	Frac Gradient [psi/ft]
0	0	0	10	20	198	0	0	0	0	0.46

Flush Volumes			Flush Pressures		Perforations			Miscellaneous		
Flush [Bbl]	Flush [gal]	Over/UnderFlus [Bbl]	Max [psi]	Average [psi]	Displacement [Bbl]	Top Perf [ft]	Bottom Perf [ft]	TVD [ft]	Aux psi	Aux psi
0.0	0	-126.6	0	0	126.6	8,145	8,374	8,145		

MATERIALS

Note: Percent variance is reported as 0% if variance is within 1 gallon

Chemicals				Proppants					
Chemical Name	Digital [gal]	Physical [gal]	Variance [%]	Type	Pumped [lb]	Designed [lb]	Variance [%]	Minimum Conc. [ppg]	Maximum Conc. [ppg]
CalVisc™ HB 6870, High Viscosity Friction Reducer	59.1	59.0	0.0%						
Fincide GQ 12 A, Biocide	94.3	94.0	0.0%						
Total Proppant					0	0			

FLUIDS

Base Fluid(s)			
Fluid Type	Amount [Bbl]	Amount [gal]	
Fresh Water	9,000.1	378,003	
Total Fluid	9,000.1	378,003	
	Amount [Bbl]	Amount [gal]	
Total Clean Frac	9,000.1	378,002.6	
Total Clean Wireline	-	-	
Total Clean Fluid	9,000.1	378,002.6	

Fluid System(s)		
Type	Amount [Bbl]	Amount [gal]
CWS-600	9,000.1	378,003
CalVisc™	0.0	0
Total Fluid	9,000.1	378,003

Stage Description		
Type	Amount [Bbl]	Amount [gal]
Pad	9,000.1	378,003
Total Fluid	9,000.1	378,003

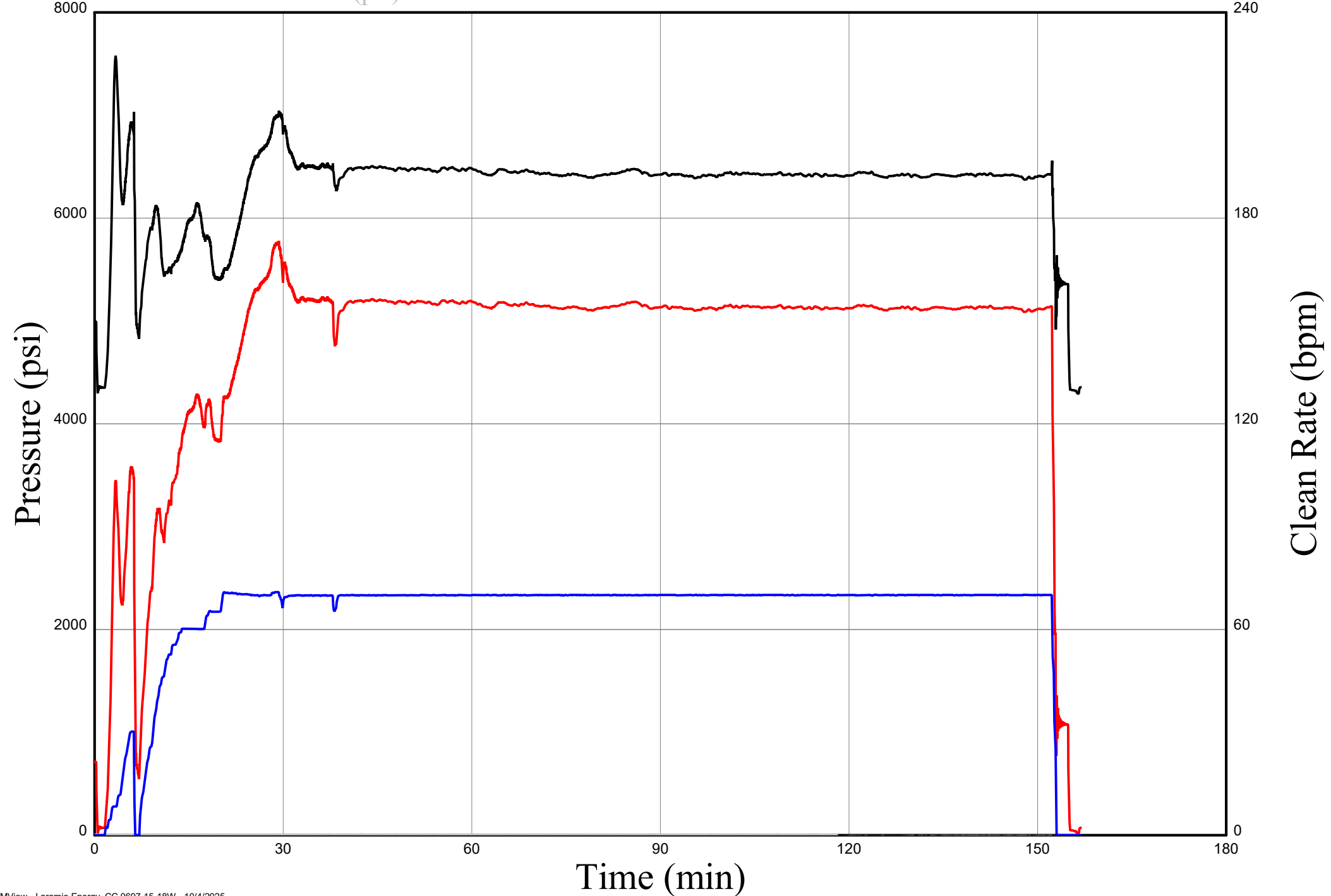
Surface and Treatment Plot, Laramie Energy CC 0697-15-18W, Stage 1

— Well Pad Treating Pressure (psi)

— Clean Rate (bpm)

— Bottom Hole Pressure (psi)

— 15-19W Backside (psi)

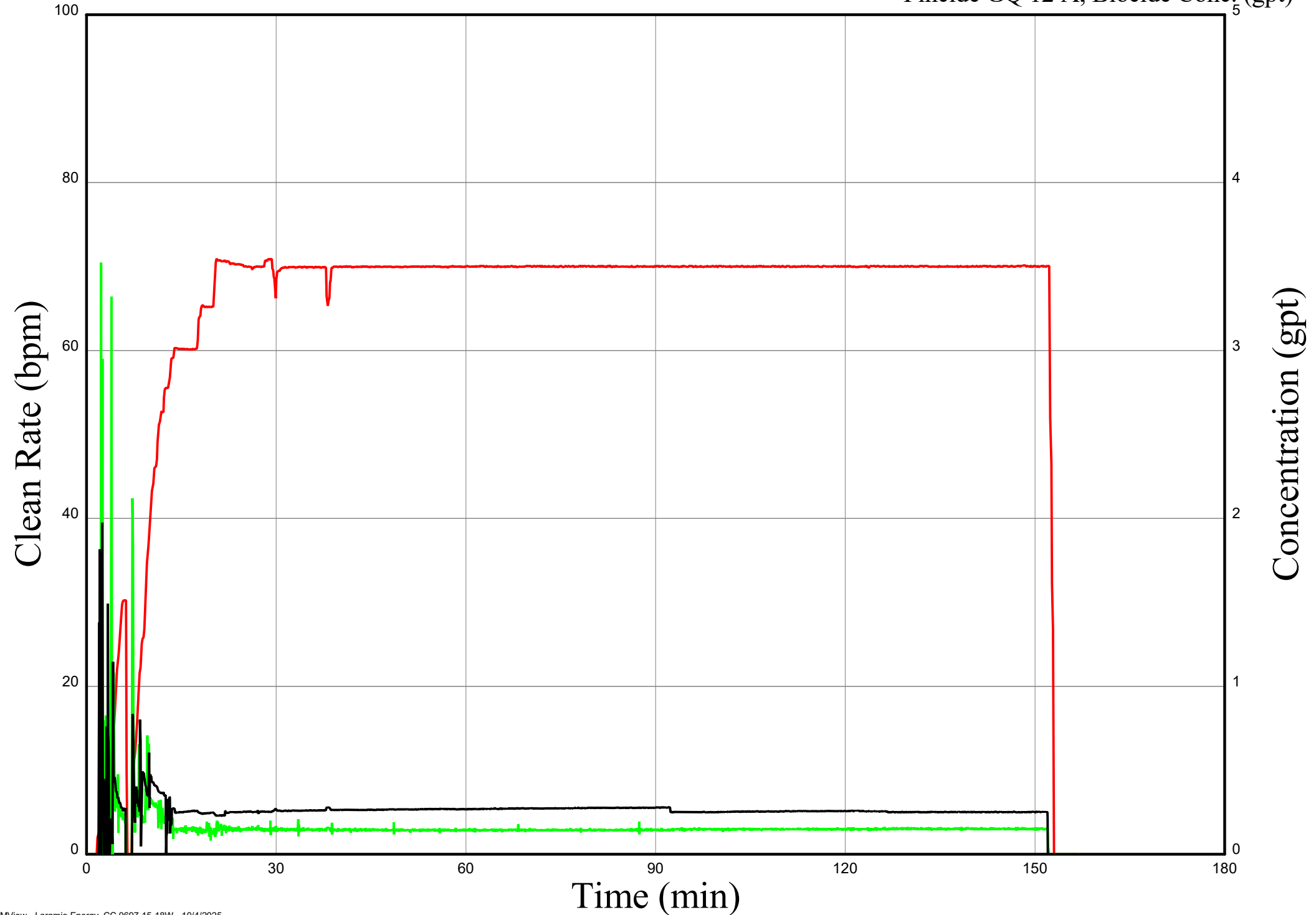


Chemical Plot, Laramie Energy CC 0697-15-18W, Stage 1

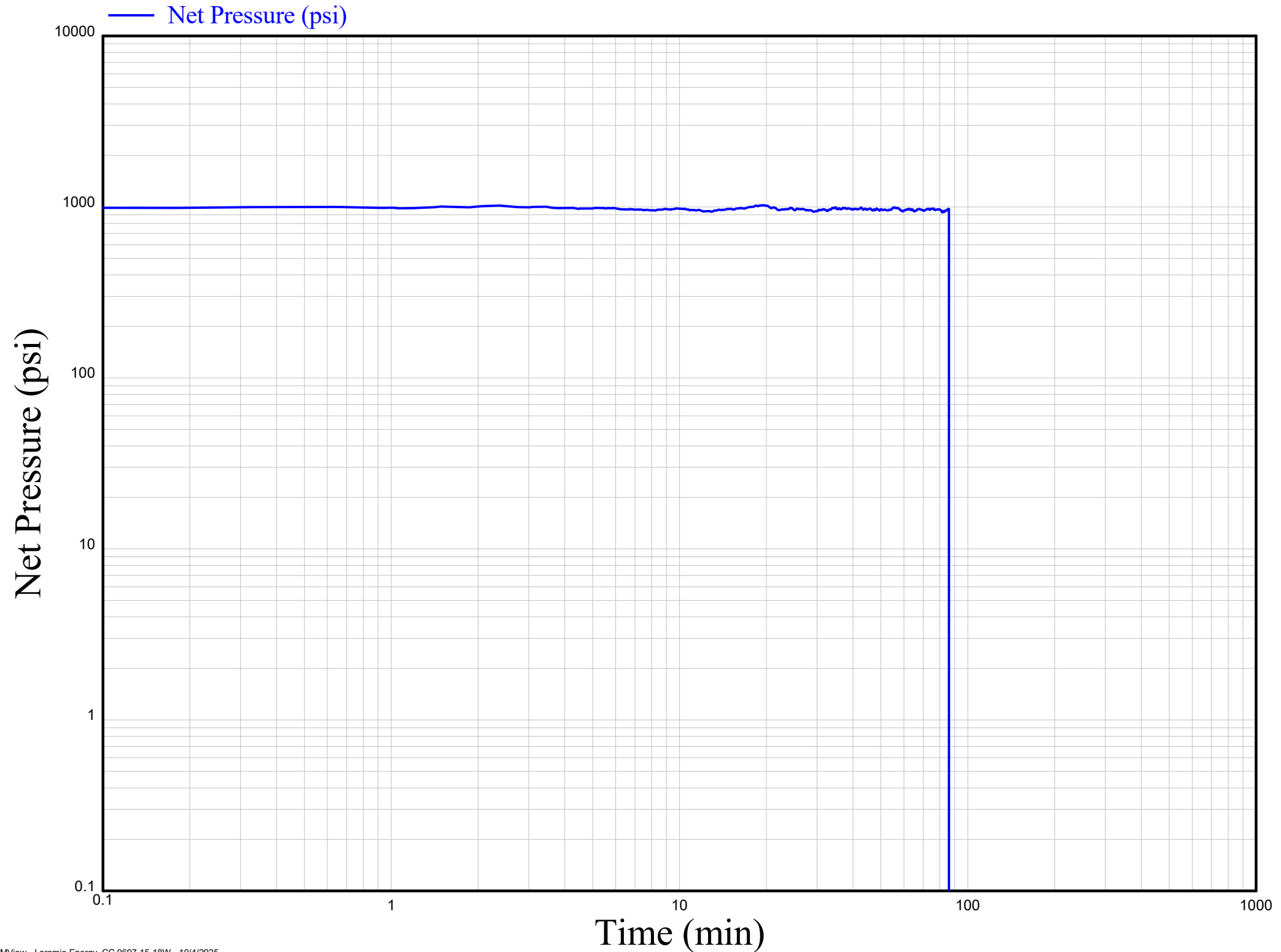
— Clean Rate (bpm)

— Calvisc HB 6870, FR Conc. (gpt)

— Fincide GQ 12 A, Biocide Conc. (gpt)



NBHP Plot, Laramie Energy CC 0697-15-18W, Stage 1



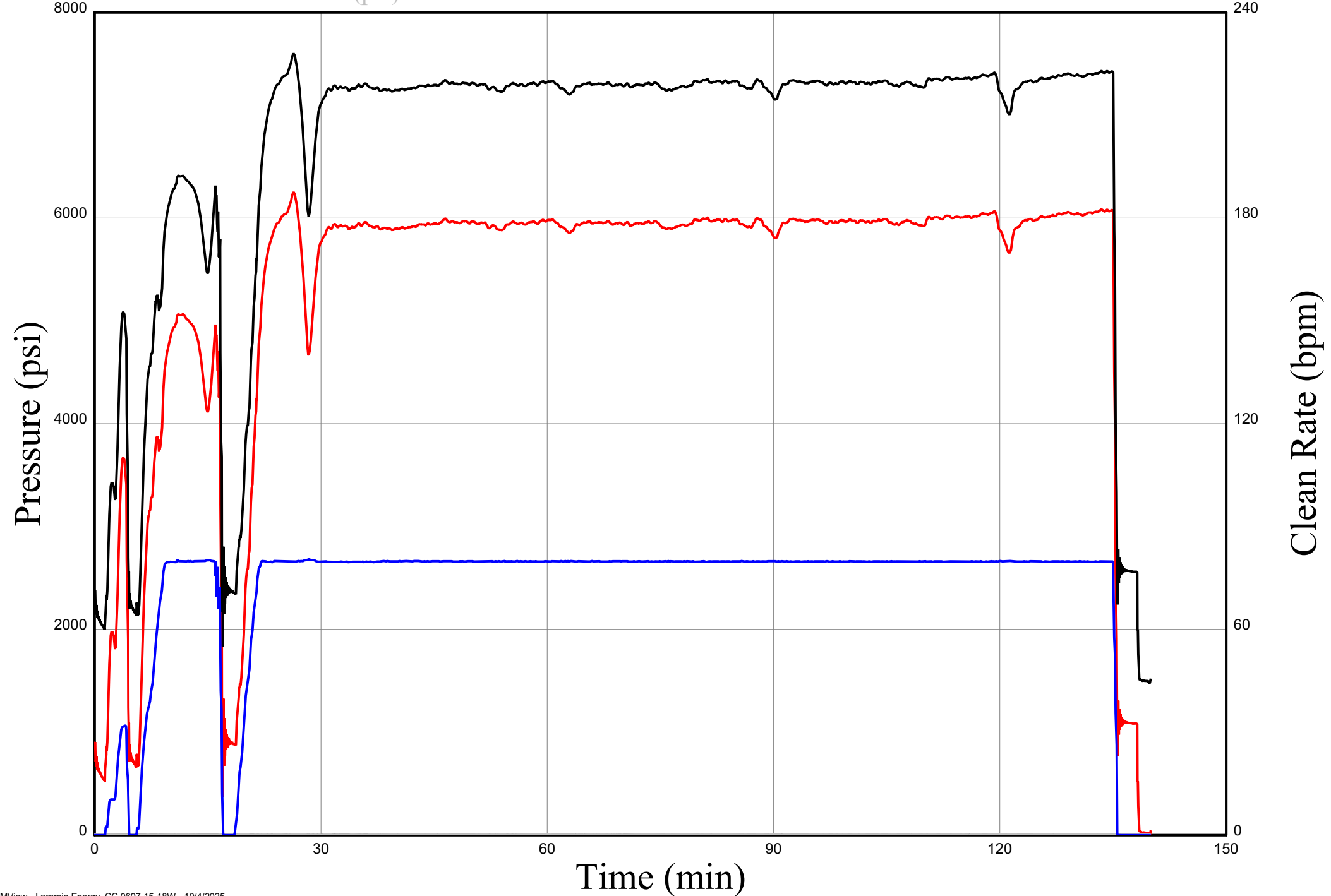
Surface and Treatment Plot, Laramie Energy CC 0697-15-18W, Stage 2

— Well Pad Treating Pressure (psi)

— Clean Rate (bpm)

— Bottom Hole Pressure (psi)

— 15-19W Backside (psi)

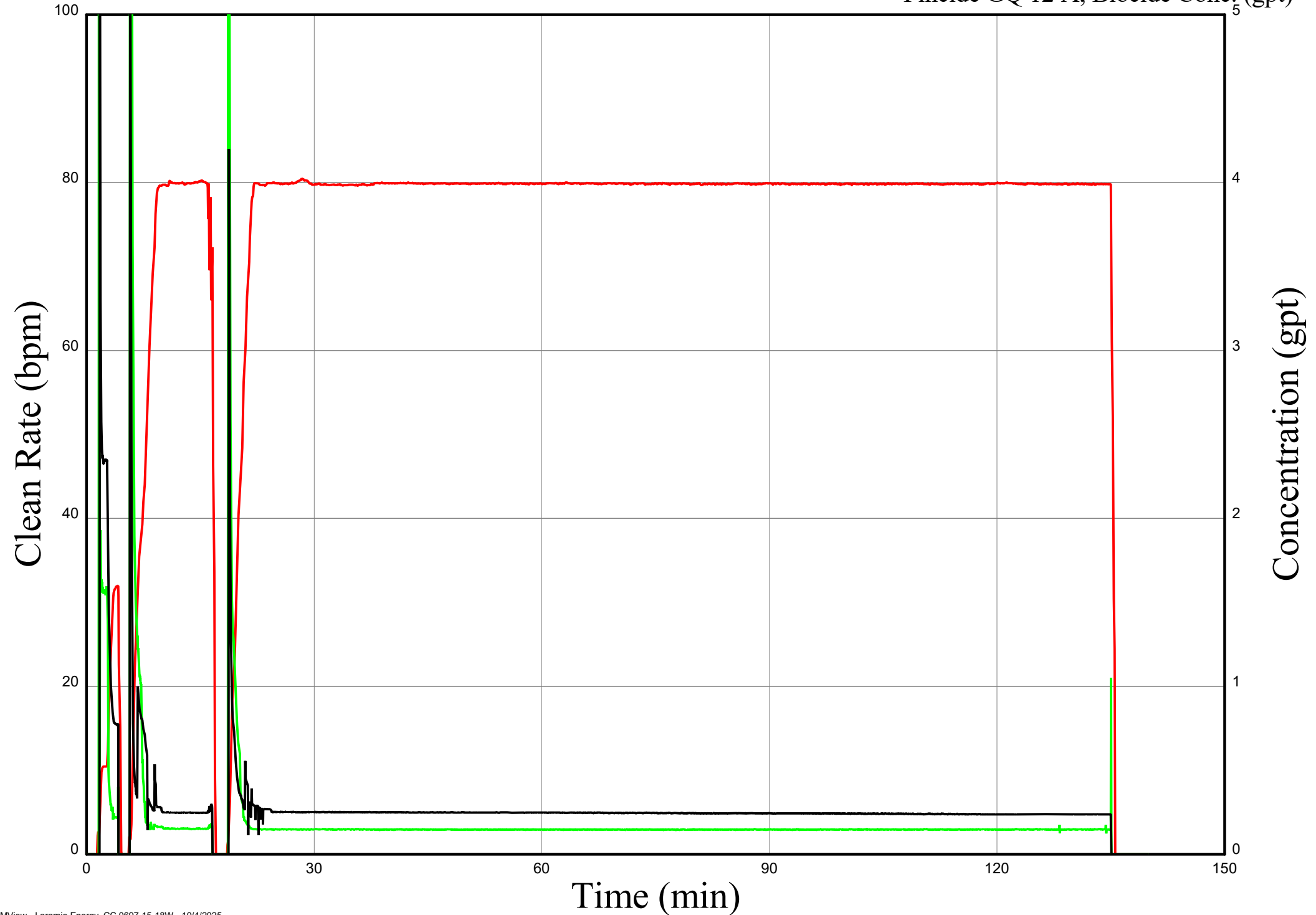


Chemical Plot, Laramie Energy CC 0697-15-18W, Stage 2

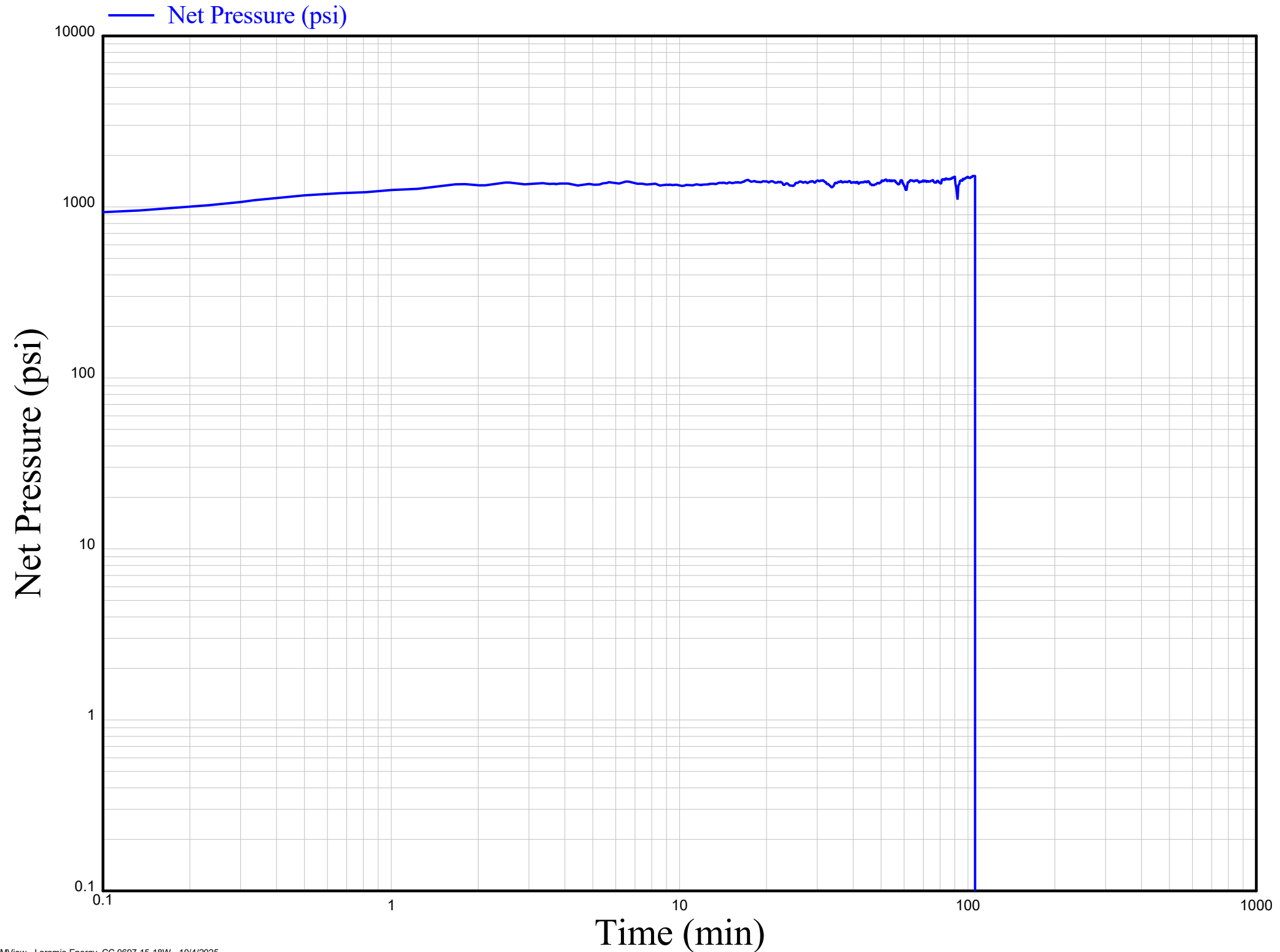
— Clean Rate (bpm)

— Calvisc HB 6870, FR Conc. (gpt)

— Fincide GQ 12 A, Biocide Conc. (gpt)



NBHP Plot, Laramie Energy CC 0697-15-18W, Stage 2



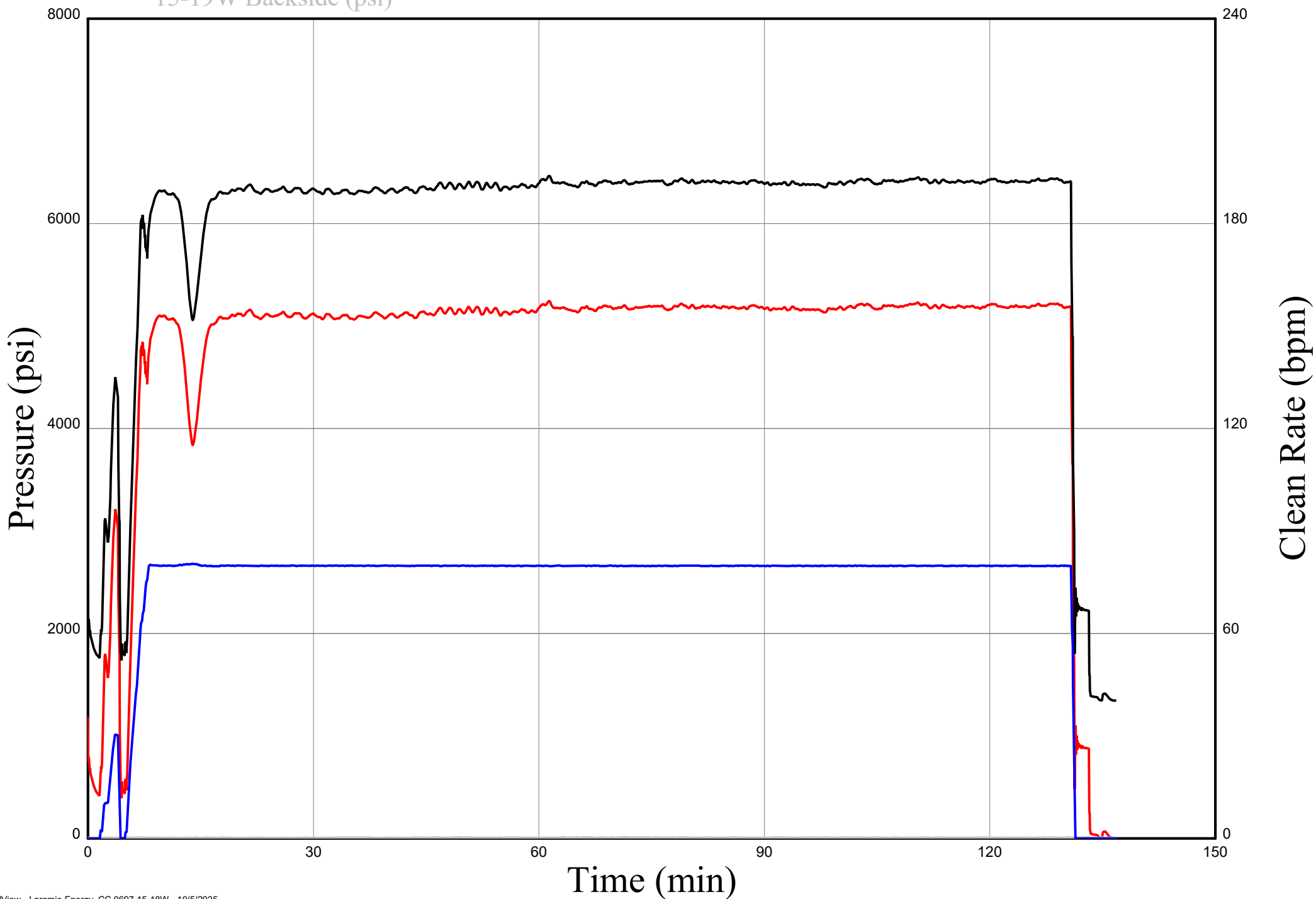
Surface and Treatment Plot, Laramie Energy CC 0697-15-18W, Stage 3

— Well Pad Treating Pressure (psi)

— Clean Rate (bpm)

— Bottom Hole Pressure (psi)

— 15-19W Backside (psi)

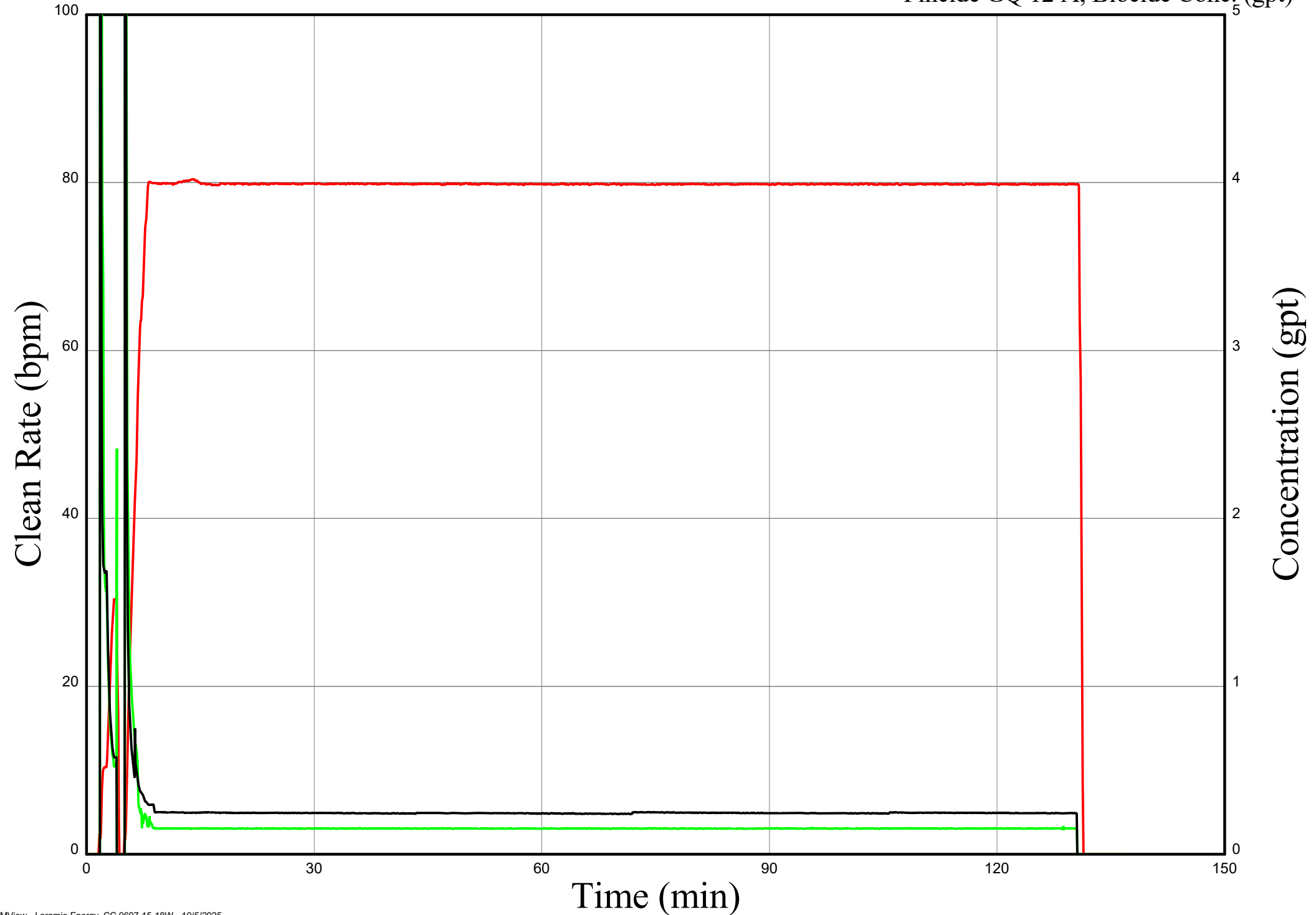


Chemical Plot, Laramie Energy CC 0697-15-18W, Stage 3

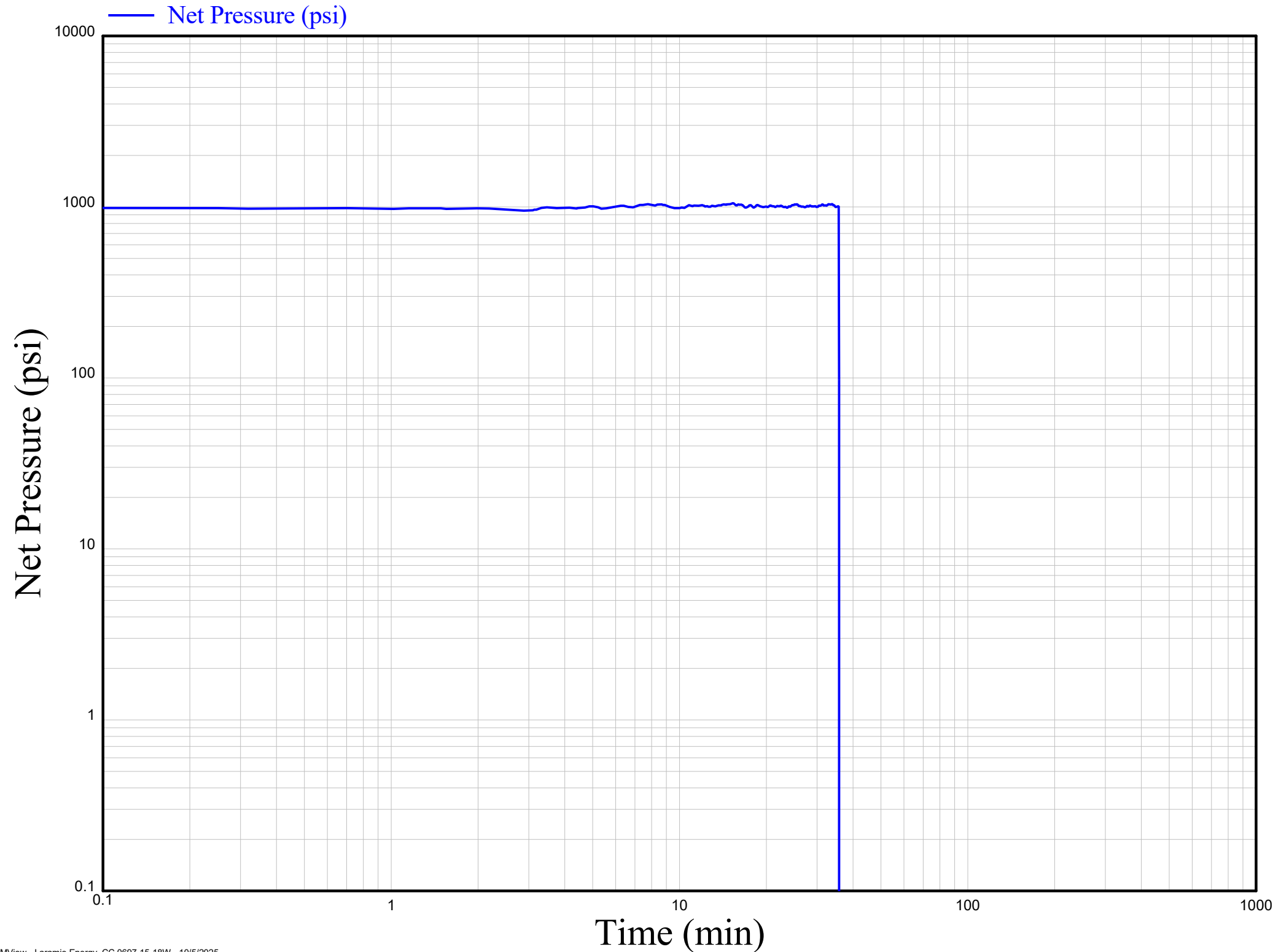
— Clean Rate (bpm)

— Calvisc HB 6870, FR Conc. (gpt)

— Fincide GQ 12 A, Biocide Conc. (gpt)



NBHP Plot, Laramie Energy CC 0697-15-18W, Stage 3



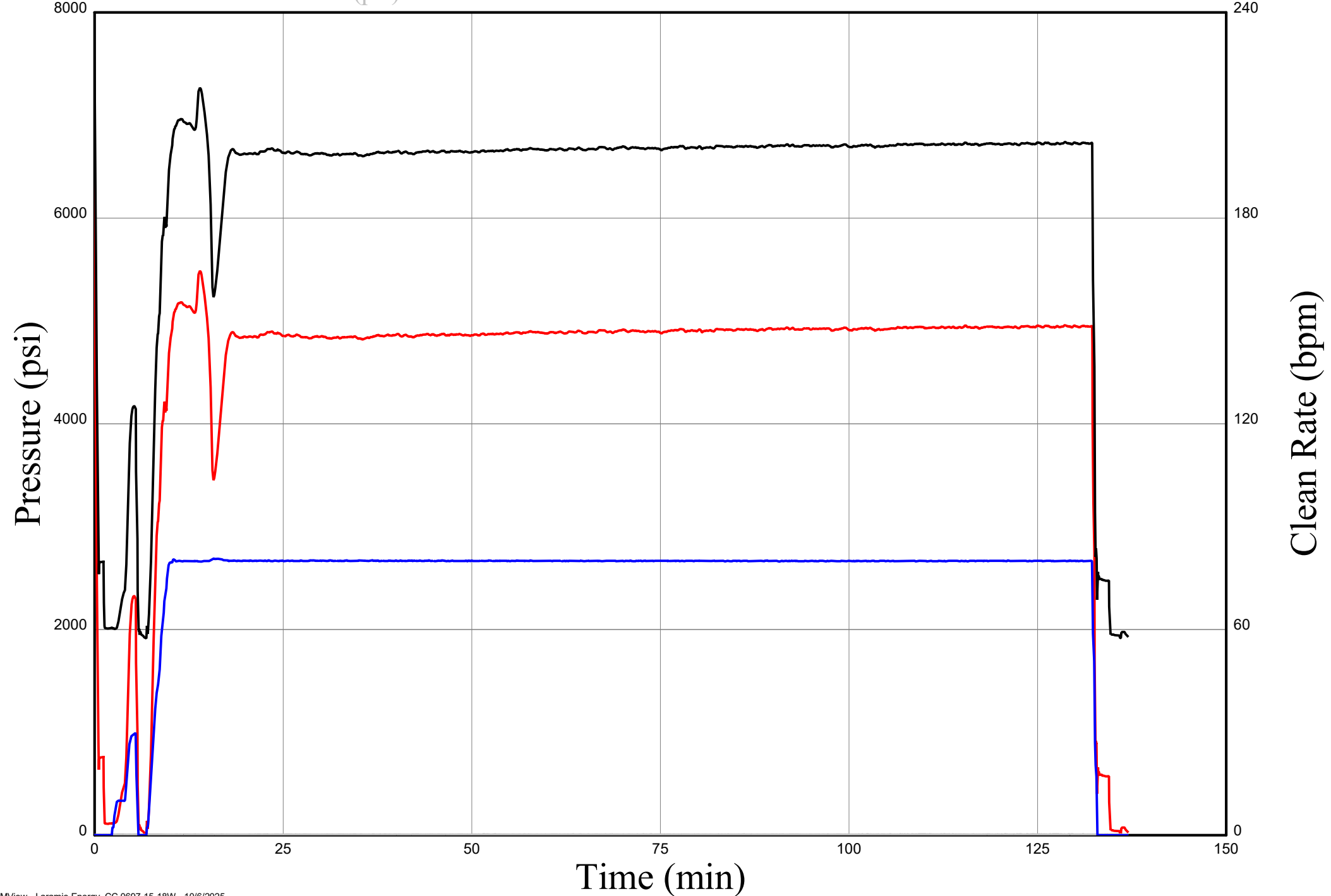
Surface and Treatment Plot, Laramie Energy CC 0697-15-18W, Stage 4

— Well Pad Treating Pressure (psi)

— Clean Rate (bpm)

— Bottom Hole Pressure (psi)

— 15-19W Backside (psi)

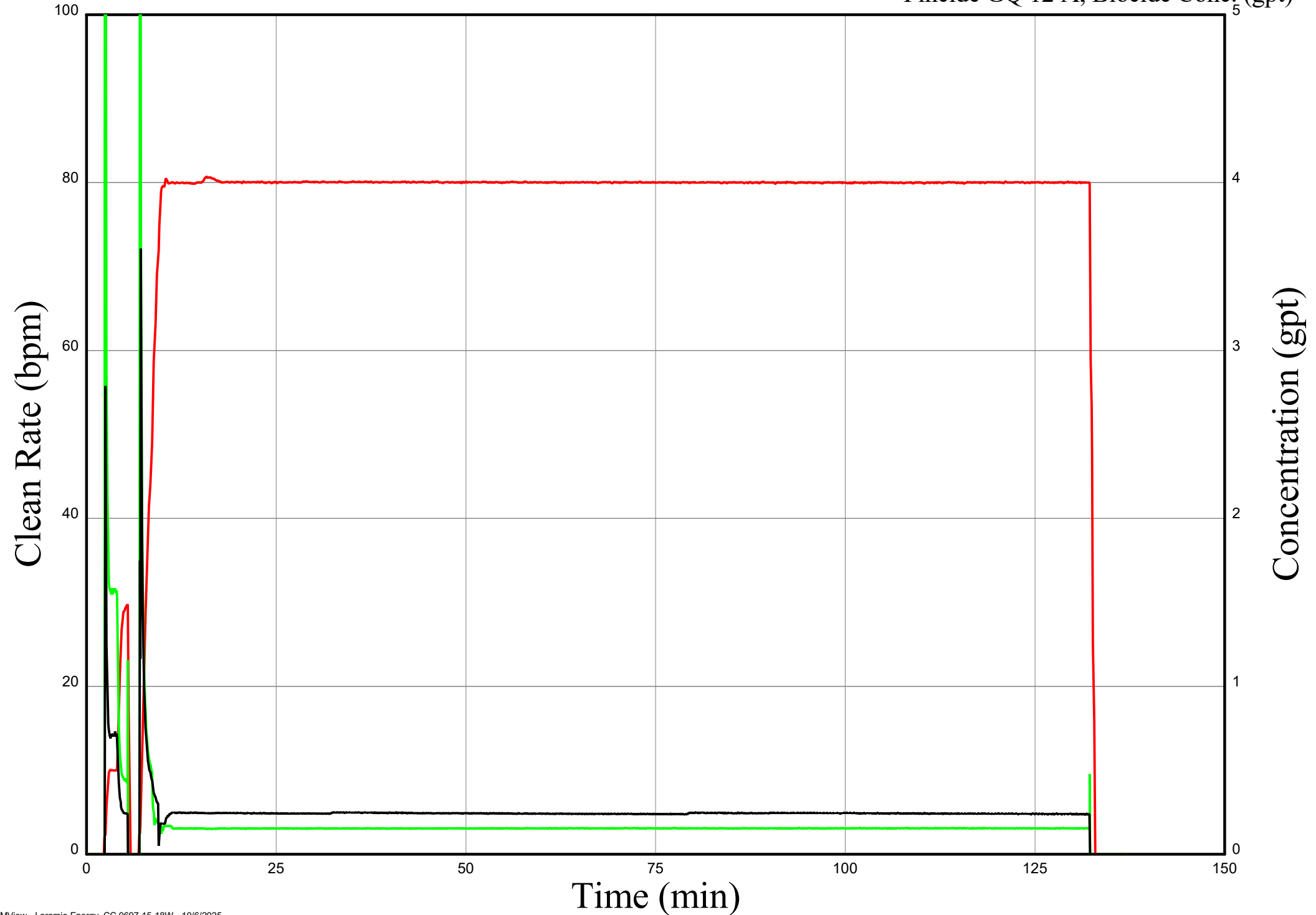


Chemical Plot, Laramie Energy CC 0697-15-18W, Stage 4

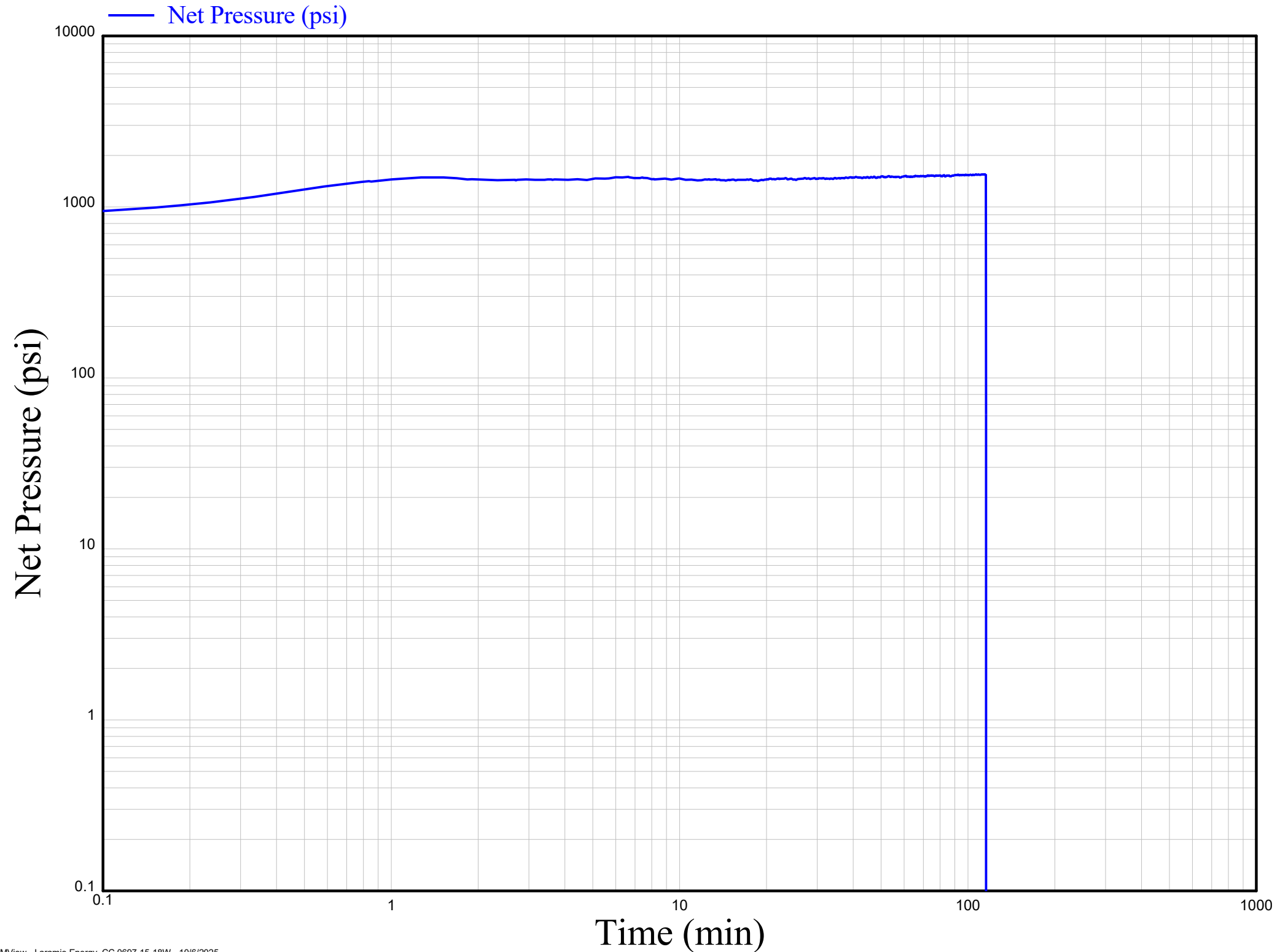
— Clean Rate (bpm)

— Calvisc HB 6870, FR Conc. (gpt)

— Fincide GQ 12 A, Biocide Conc. (gpt)



NBHP Plot, Laramie Energy CC 0697-15-18W, Stage 4



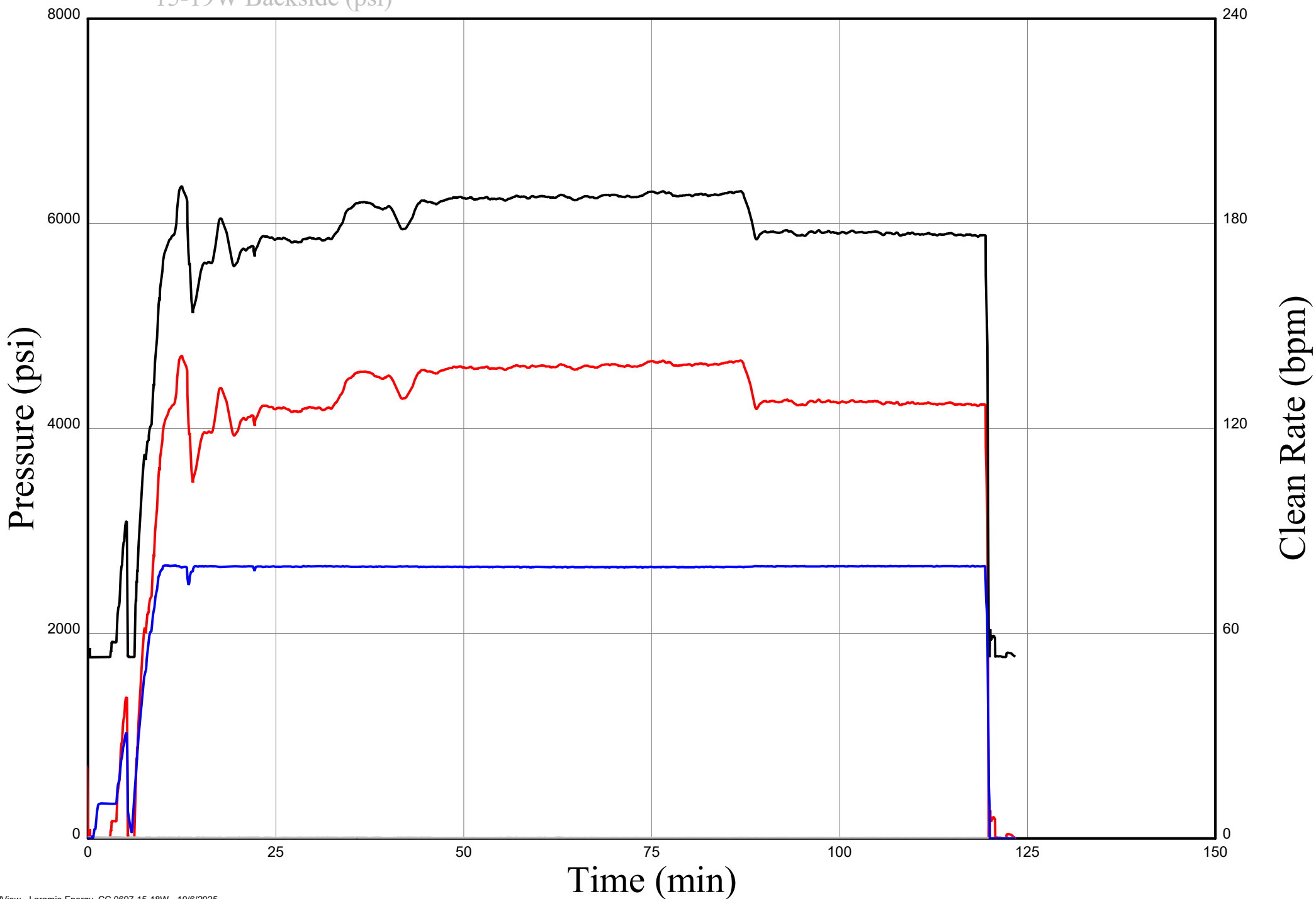
Surface and Treatment Plot, Laramie Energy CC 0697-15-18W, Stage 5

— Well Pad Treating Pressure (psi)

— Clean Rate (bpm)

— Bottom Hole Pressure (psi)

— 15-19W Backside (psi)

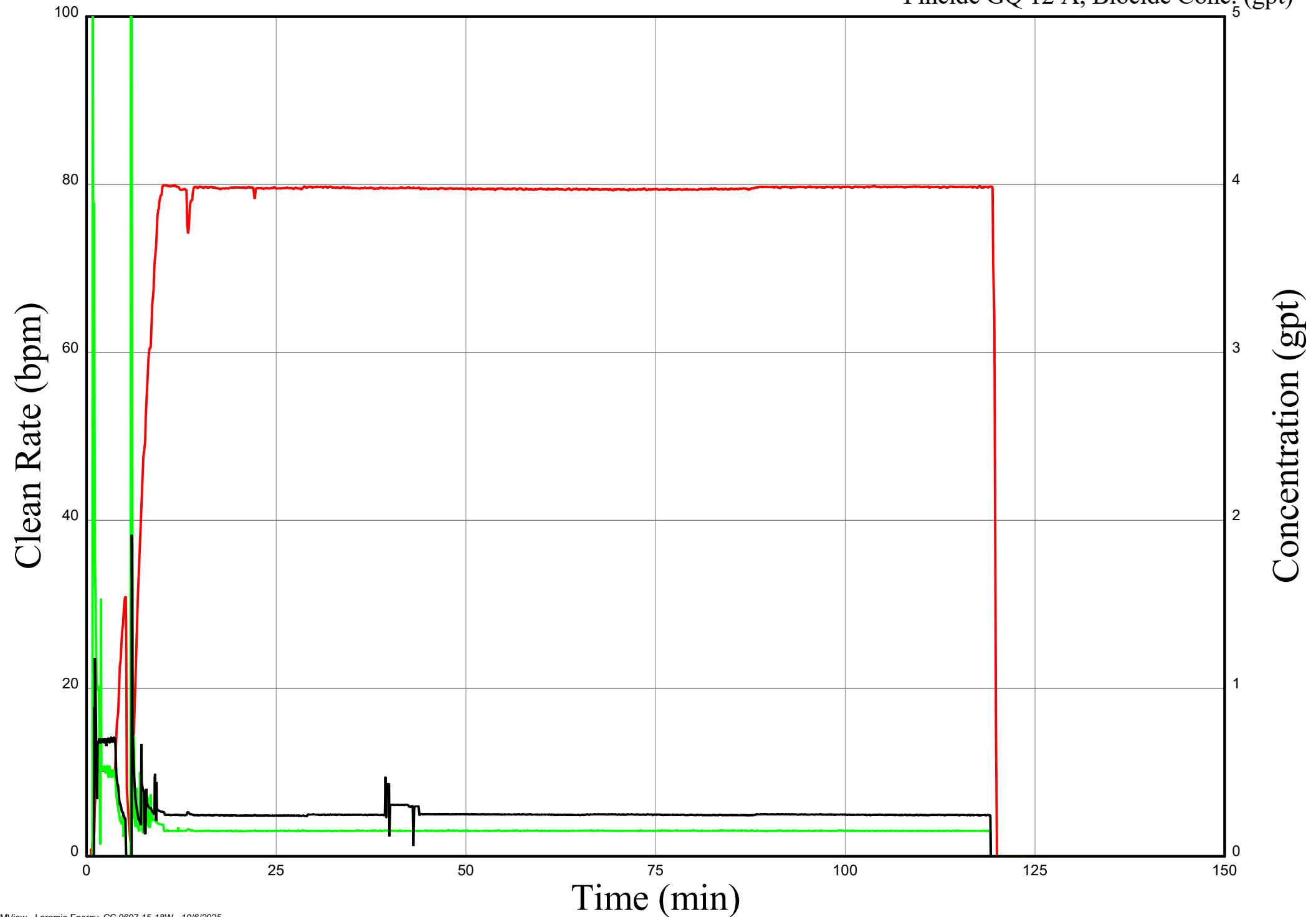


Chemical Plot, Laramie Energy CC 0697-15-18W, Stage 5

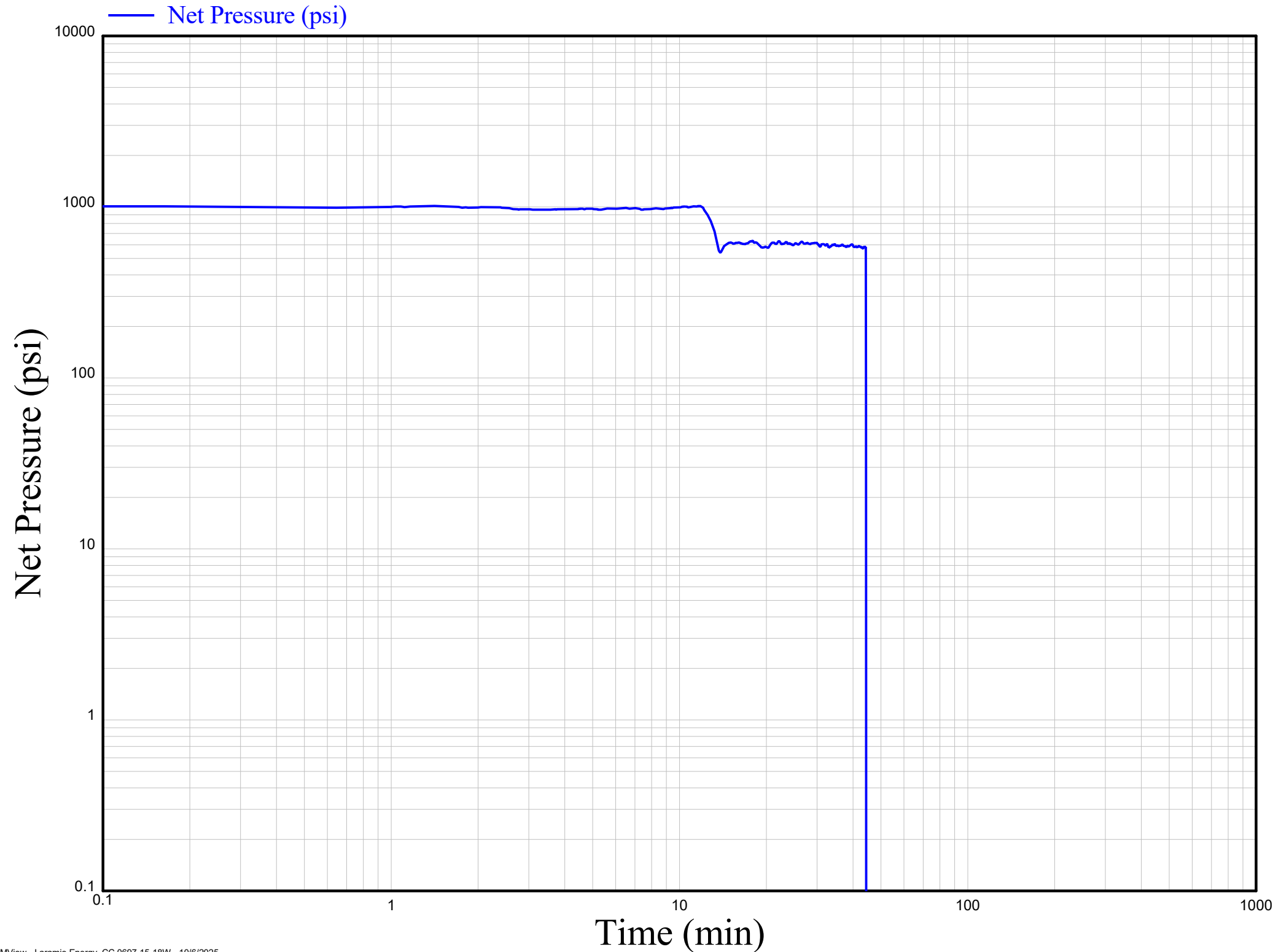
— Clean Rate (bpm)

— Calvisc HB 6870, FR Conc. (gpt)

— Fincide GQ 12 A, Biocide Conc. (gpt)



NBHP Plot, Laramie Energy CC 0697-15-18W, Stage 5



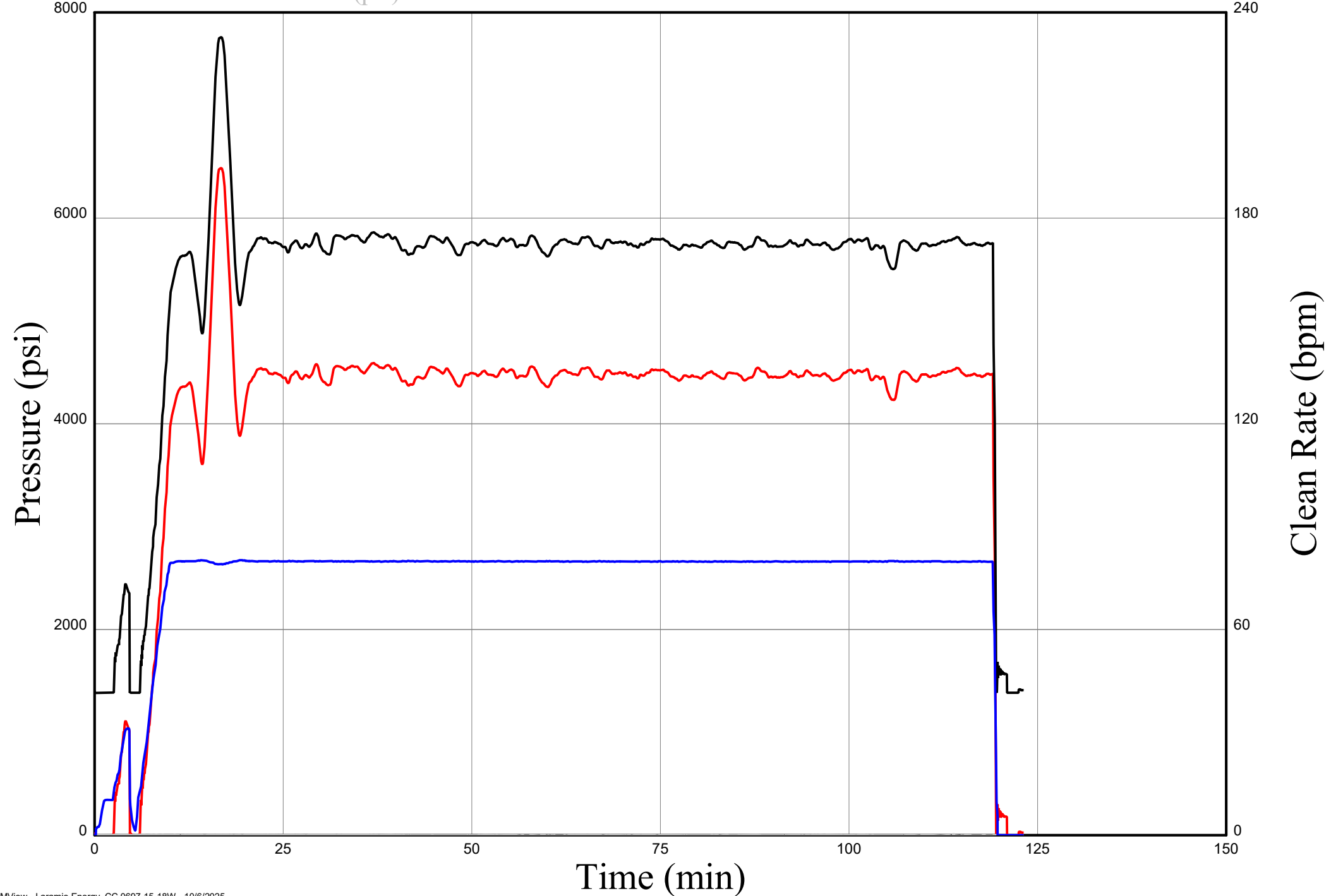
Surface and Treatment Plot, Laramie Energy CC 0697-15-18W, Stage 6

— Well Pad Treating Pressure (psi)

— Clean Rate (bpm)

— Bottom Hole Pressure (psi)

— 15-19W Backside (psi)

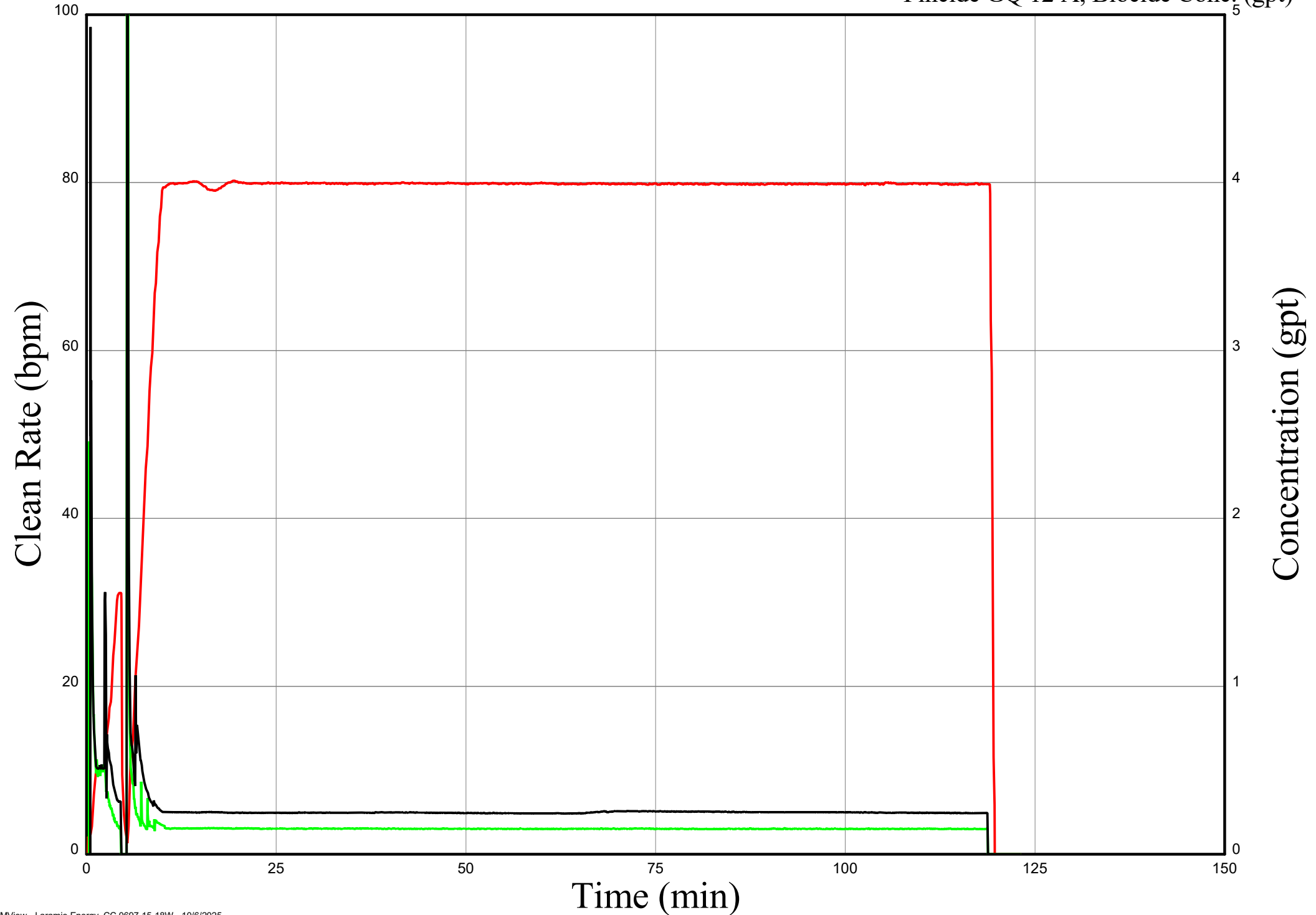


Chemical Plot, Laramie Energy CC 0697-15-18W, Stage 6

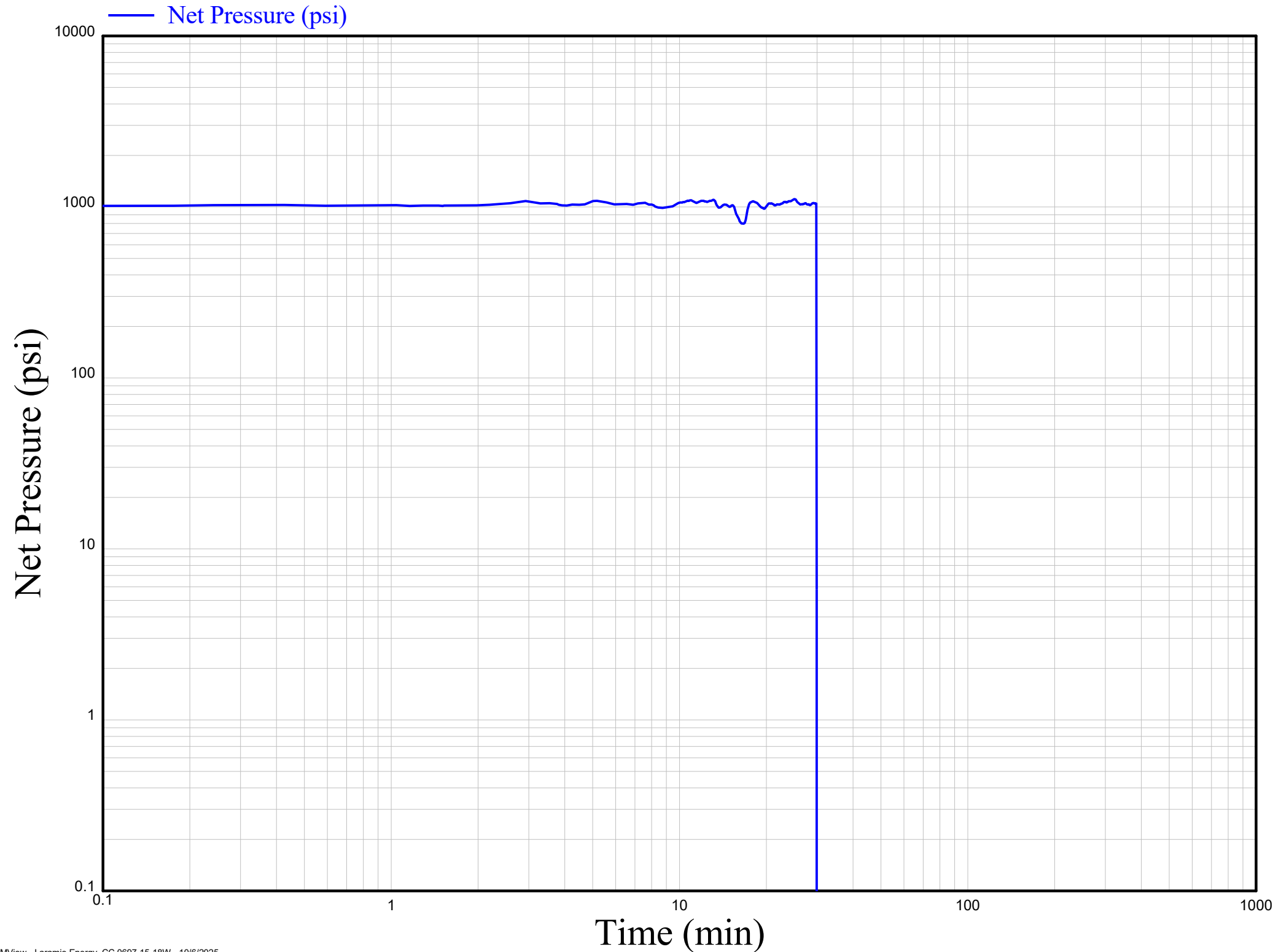
— Clean Rate (bpm)

— Calvisc HB 6870, FR Conc. (gpt)

— Fincide GQ 12 A, Biocide Conc. (gpt)



NBHP Plot, Laramie Energy CC 0697-15-18W, Stage 6



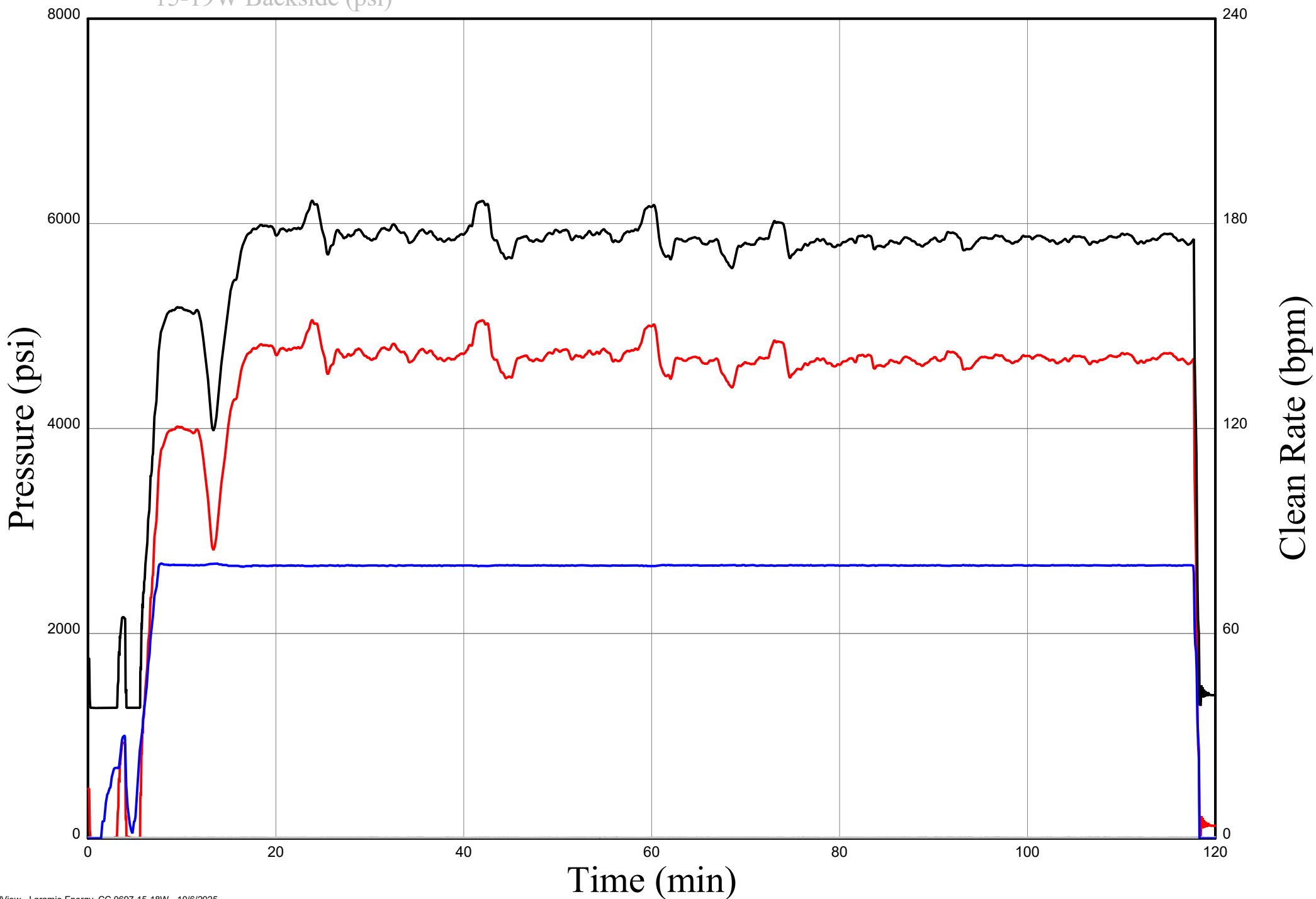
Surface and Treatment Plot, Laramie Energy CC 0697-15-18W, Stage 7

— Well Pad Treating Pressure (psi)

— Clean Rate (bpm)

— Bottom Hole Pressure (psi)

— 15-19W Backside (psi)

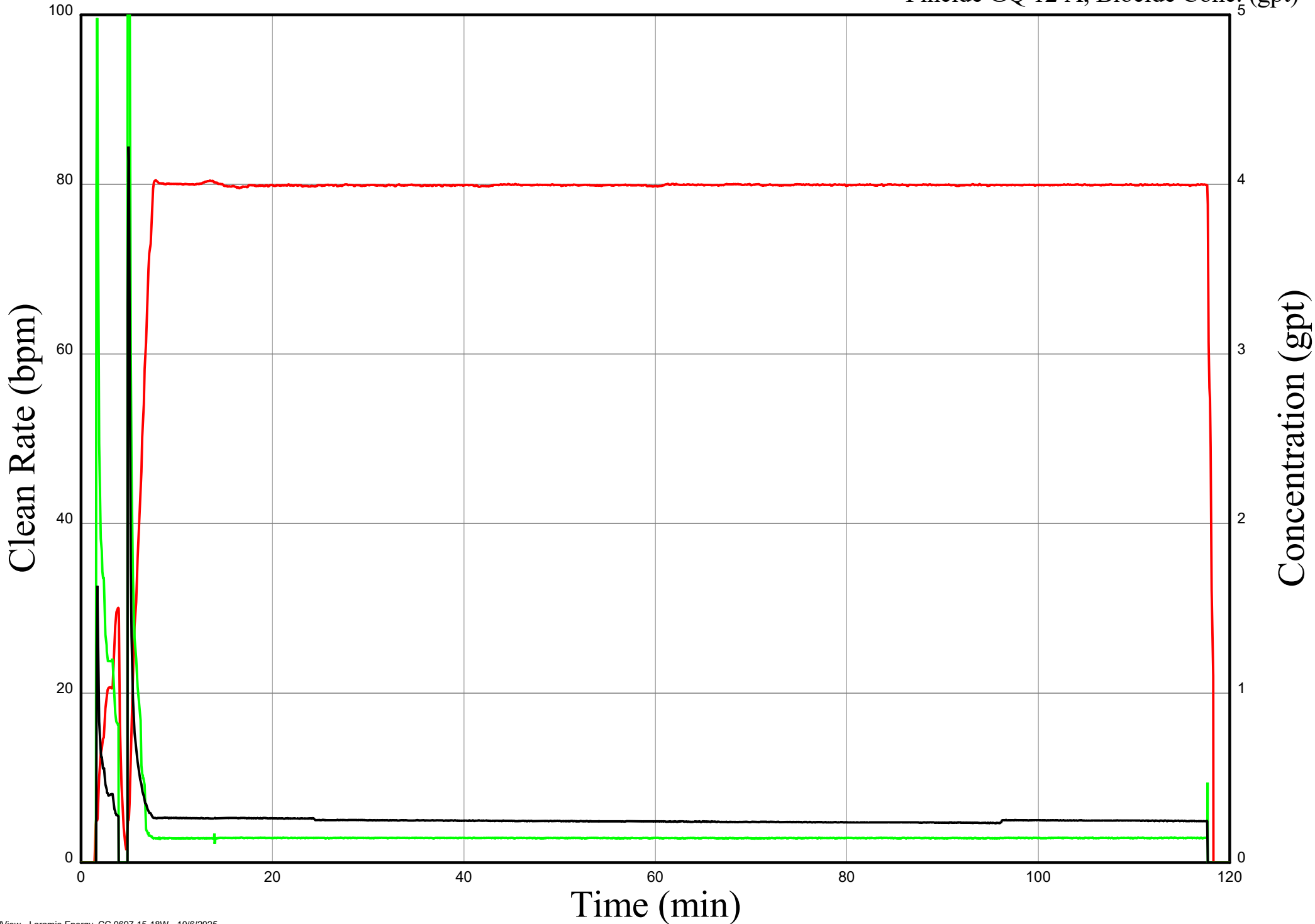


Chemical Plot, Laramie Energy CC 0697-15-18W, Stage 7

— Clean Rate (bpm)

— Calvisc HB 6870, FR Conc. (gpt)

— Fincide GQ 12 A, Biocide Conc. (gpt)



NBHP Plot, Laramie Energy CC 0697-15-18W, Stage 7

