



SUMMARY - FRACTURING ZONE 1 TO 1

Start Time: 10/4/25 3:40 PM
 End Time: 10/4/25 6:10 PM

AFE#: 0
 County: 0
 Formation: Cameo

SO Number: 250343U.F18.S1
 Program #: 250343U.F18-1
 State: Colorado
 District: Grand Junction

TREATMENT

Volume				Pressures			Slurry Rate		Exposure	
Clean [Bbl]	Clean [gal]	Slurry [Bbl]	Slurry [gal]	Wireline [Bbl]	Pad [Bbl]	Max [psi]	Average [psi]	Max [bbl/min]	Average [bbl/min]	Time [hh:mm:ss]
9,997.2	419,882	9,997.2	419,882	0.0	9,997.2	7,180	6,153	70.3	67.5	2:28:01

TECHNICAL

Treatment					Shut in Pressure					
Opening [psi]	Annulus [psi]	Load Hole [Bbl]	Break [psi]	Rate Break [bbl/min]	ISIP [psi]	1 Min [psi]	5 Min [psi]	10 Min [psi]	15 Min [psi]	Frac Gradient [psi/ft]
140	0	0	2,716	11	1,385	0	0	0	0	0.57

Flush Volumes			Flush Pressures		Perforations			Miscellaneous		
Flush [Bbl]	Flush [gal]	Over/UnderFlus [Bbl]	Max [psi]	Average [psi]	Displacement [Bbl]	Top Perf [ft]	Bottom Perf [ft]	TVD [ft]	Aux psi	Aux psi
0.0	0	-154.4	0	0	154.4	9,934	10,213	9,934		

MATERIALS

Note: Percent variance is reported as 0% if variance is within 1 gallon

Chemicals				Proppants					
Chemical Name	Digital [gal]	Physical [gal]	Variance [%]	Type	Pumped [lb]	Designed [lb]	Variance [%]	Minimum Conc. [ppg]	Maximum Conc. [ppg]
CalVisc™ HB 6870, High Viscosity Friction Reducer	64.2	64.0	0.0%						
Fincide GQ 12 A, Biocide	105.2	105.0	0.0%						
Total Proppant					0	0			

FLUIDS

Base Fluid(s)		
Fluid Type	Amount [Bbl]	Amount [gal]
Fresh Water	9,997.2	419,882
Total Fluid	9,997.2	419,882
Total Clean Fluid		
Fluid Type	Amount [Bbl]	Amount [gal]
Total Clean Frac	9,997.2	419,881.6
Total Clean Wireline	-	-
Total Clean Fluid	9,997.2	419,881.6

Fluid System(s)		
Type	Amount [Bbl]	Amount [gal]
CWS-600	9,997.2	419,882
CalVisc™	0.0	0
Total Fluid	9,997.2	419,882

Stage Description		
Type	Amount [Bbl]	Amount [gal]
Pad	9,997.2	419,882
Total Fluid	9,997.2	419,882



SUMMARY - FRACTURING ZONE 2 TO 2

Start Time: 10/5/25 2:18 AM
 End Time: 10/5/25 4:29 AM

AFE#: 0
 County: 0
 Formation: Cameo

SO Number: 250343U.F18.S1
 Program #: 250343U.F18-1
 District: Grand Junction
 State: Colorado

TREATMENT

Volume				Pressures			Slurry Rate		Exposure	
Clean [Bbl]	Clean [gal]	Slurry [Bbl]	Slurry [gal]	Wireline [Bbl]	Pad [Bbl]	Max [psi]	Average [psi]	Max [bbl/min]	Average [bbl/min]	Time [hh:mm:ss]
10,000.7	420,029	10,000.7	420,029	0.0	10,000.7	6,984	6,313	80.3	77.3	2:09:26

TECHNICAL

Treatment					Shut in Pressure					
Opening [psi]	Annulus [psi]	Load Hole [Bbl]	Break [psi]	Rate Break [bbl/min]	ISIP [psi]	1 Min [psi]	5 Min [psi]	10 Min [psi]	15 Min [psi]	Frac Gradient [psi/ft]
327	0	0	803	10	1,263	0	0	0	0	0.56

Flush Volumes			Flush Pressures		Perforations			Miscellaneous		
Flush [Bbl]	Flush [gal]	Over/UnderFlus [Bbl]	Max [psi]	Average [psi]	Displacement [Bbl]	Top Perf [ft]	Bottom Perf [ft]	TVD [ft]	Aux psi	Aux psi
0.0	0	-149.8	0	0	149.8	9,636	9,911	9,636		

MATERIALS

Note: Percent variance is reported as 0% if variance is within 1 gallon

Chemicals				Proppants					
Chemical Name	Digital [gal]	Physical [gal]	Variance [%]	Type	Pumped [lb]	Designed [lb]	Variance [%]	Minimum Conc. [ppg]	Maximum Conc. [ppg]
CalVisc™ HB 6870, High Viscosity Friction Reducer	66.9	67.0	0.0%						
Fincide GQ 12 A, Biocide	106.0	106.0	0.0%						
Total Proppant					0	0			

FLUIDS

Base Fluid(s)		
Fluid Type	Amount [Bbl]	Amount [gal]
Fresh Water	10,000.7	420,029
Total Fluid	10,000.7	420,029
Total Clean Fluid		
Fluid Type	Amount [Bbl]	Amount [gal]
Total Clean Frac	10,000.7	420,029.4
Total Clean Wireline	-	-
Total Clean Fluid	10,000.7	420,029.4

Fluid System(s)		
Type	Amount [Bbl]	Amount [gal]
CWS-600	10,000.7	420,029
CalVisc™	0.0	0
Total Fluid	10,000.7	420,029

Stage Description		
Type	Amount [Bbl]	Amount [gal]
Pad	10,000.7	420,029
Total Fluid	10,000.7	420,029



SUMMARY - FRACTURING ZONE 3 TO 3

Start Time: 10/5/25 7:31 PM
 End Time: 10/5/25 9:49 PM

AFE#: 0
 County: 0
 Formation: Cameo

SO Number: 250343U.F18.S1
 Program #: 250343U.F18-1
 District: Grand Junction
 State: Colorado

TREATMENT

Volume				Pressures			Slurry Rate		Exposure	
Clean [Bbl]	Clean [gal]	Slurry [Bbl]	Slurry [gal]	Wireline [Bbl]	Pad [Bbl]	Max [psi]	Average [psi]	Max [bbl/min]	Average [bbl/min]	Time [hh:mm:ss]
9,996.0	419,830	9,996.0	419,830	0.0	9,996.0	6,694	5,751	80.4	73.3	2:16:25

TECHNICAL

Treatment					Shut in Pressure					
Opening [psi]	Annulus [psi]	Load Hole [Bbl]	Break [psi]	Rate Break [bbl/min]	ISIP [psi]	1 Min [psi]	5 Min [psi]	10 Min [psi]	15 Min [psi]	Frac Gradient [psi/ft]
308	0	0	757	11	1,059	0	0	0	0	0.55

Flush Volumes			Flush Pressures		Perforations			Miscellaneous		
Flush [Bbl]	Flush [gal]	Over/UnderFlus [Bbl]	Max [psi]	Average [psi]	Displacement [Bbl]	Top Perf [ft]	Bottom Perf [ft]	TVD [ft]	Aux psi	Aux psi
0.0	0	-144.8	0	0	144.8	9,317	9,620	9,317		

MATERIALS

Note: Percent variance is reported as 0% if variance is within 1 gallon

Chemicals				Proppants					
Chemical Name	Digital [gal]	Physical [gal]	Variance [%]	Type	Pumped [lb]	Designed [lb]	Variance [%]	Minimum Conc. [ppg]	Maximum Conc. [ppg]
CalVisc™ HB 6870, High Viscosity Friction Reducer	67.8	68.0	0.0%						
Fincide GQ 12 A, Biocide	103.4	103.0	0.0%						
Total Proppant					0	0			

FLUIDS

Base Fluid(s)		
Fluid Type	Amount [Bbl]	Amount [gal]
Fresh Water	9,996.0	419,830
Total Fluid	9,996.0	419,830
Total Clean Fluid		
Fluid Type	Amount [Bbl]	Amount [gal]
Total Clean Frac	9,996.0	419,830.1
Total Clean Wireline	-	-
Total Clean Fluid	9,996.0	419,830.1

Fluid System(s)		
Type	Amount [Bbl]	Amount [gal]
CWS-600	9,996.0	419,830
CalVisc™	0.0	0
Total Fluid	9,996.0	419,830

Stage Description		
Type	Amount [Bbl]	Amount [gal]
Pad	9,996.0	419,830
Total Fluid	9,996.0	419,830



SUMMARY - FRACTURING ZONE 4 TO 4

Start Time: 10/6/25 3:40 AM
 End Time: 10/6/25 5:50 AM

AFE#: 0
 County: 0
 Formation: Cameo

SO Number: 250343U.F18.S1
 Program #: 250343U.F18-1
 District: Grand Junction
 State: Colorado

TREATMENT

Volume				Pressures			Slurry Rate		Exposure	
Clean [Bbl]	Clean [gal]	Slurry [Bbl]	Slurry [gal]	Wireline [Bbl]	Pad [Bbl]	Max [psi]	Average [psi]	Max [bbl/min]	Average [bbl/min]	Time [hh:mm:ss]
10,000.6	420,025	10,000.6	420,025	0.0	10,000.6	5,829	5,555	80.3	77.4	2:09:09

TECHNICAL

Treatment					Shut in Pressure					
Opening [psi]	Annulus [psi]	Load Hole [Bbl]	Break [psi]	Rate Break [bbl/min]	ISIP [psi]	1 Min [psi]	5 Min [psi]	10 Min [psi]	15 Min [psi]	Frac Gradient [psi/ft]
412	0	0	840	10	933	0	0	0	0	0.54

Flush Volumes			Flush Pressures		Perforations			Miscellaneous		
Flush [Bbl]	Flush [gal]	Over/UnderFlus [Bbl]	Max [psi]	Average [psi]	Displacement [Bbl]	Top Perf [ft]	Bottom Perf [ft]	TVD [ft]	Aux psi	Aux psi
0.0	0	-140.3	0	0	140.3	9,027	9,302	9,027		

MATERIALS

Note: Percent variance is reported as 0% if variance is within 1 gallon

Chemicals				Proppants					
Chemical Name	Digital [gal]	Physical [gal]	Variance [%]	Type	Pumped [lb]	Designed [lb]	Variance [%]	Minimum Conc. [ppg]	Maximum Conc. [ppg]
CalVisc™ HB 6870, High Viscosity Friction Reducer	67.4	67.0	0.0%						
Fincide GQ 12 A, Biocide	104.8	105.0	0.0%						
Total Proppant					0	0			

FLUIDS

Base Fluid(s)		
Fluid Type	Amount [Bbl]	Amount [gal]
Fresh Water	10,000.6	420,025
Total Fluid	10,000.6	420,025
	Amount [Bbl]	Amount [gal]
Total Clean Frac	10,000.6	420,024.5
Total Clean Wireline	-	-
Total Clean Fluid	10,000.6	420,024.5

Fluid System(s)		
Type	Amount [Bbl]	Amount [gal]
CWS-600	10,000.6	420,025
CalVisc™	0.0	0
Total Fluid	10,000.6	420,025

Stage Description		
Type	Amount [Bbl]	Amount [gal]
Pad	10,000.6	420,025
Total Fluid	10,000.6	420,025



SUMMARY - FRACTURING ZONE 5 TO 5

Start Time: 10/6/25 12:33 PM
 End Time: 10/6/25 2:32 PM

AFE#: 0
 County: 0
 Formation: Cameo

SO Number: 250343U.F18.S1
 Program #: 250343U.F18-1
 District: Grand Junction
 State: Colorado

TREATMENT

Volume				Pressures			Slurry Rate		Exposure	
Clean [Bbl]	Clean [gal]	Slurry [Bbl]	Slurry [gal]	Wireline [Bbl]	Pad [Bbl]	Max [psi]	Average [psi]	Max [bbl/min]	Average [bbl/min]	Time [hh:mm:ss]
9,000.6	378,026	9,000.6	378,026	0.0	9,000.6	6,631	4,949	80.4	76.0	1:58:29

TECHNICAL

Treatment					Shut in Pressure					
Opening [psi]	Annulus [psi]	Load Hole [Bbl]	Break [psi]	Rate Break [bbl/min]	ISIP [psi]	1 Min [psi]	5 Min [psi]	10 Min [psi]	15 Min [psi]	Frac Gradient [psi/ft]
70	0	0	453	10	531	0	0	0	0	0.49

Flush Volumes			Flush Pressures		Perforations			Miscellaneous		
Flush [Bbl]	Flush [gal]	Over/UnderFlus [Bbl]	Max [psi]	Average [psi]	Displacement [Bbl]	Top Perf [ft]	Bottom Perf [ft]	TVD [ft]	Aux psi	Aux psi
0.0	0	-135.7	0	0	135.7	8,730	9,019	8,730		

MATERIALS

Note: Percent variance is reported as 0% if variance is within 1 gallon

Chemicals				Proppants					
Chemical Name	Digital [gal]	Physical [gal]	Variance [%]	Type	Pumped [lb]	Designed [lb]	Variance [%]	Minimum Conc. [ppg]	Maximum Conc. [ppg]
CalVisc™ HB 6870, High Viscosity Friction Reducer	57.5	58.0	0.0%						
Fincide GQ 12 A, Biocide	93.0	93.0	0.0%						
Total Proppant					0	0			

FLUIDS

Base Fluid(s)		
Fluid Type	Amount [Bbl]	Amount [gal]
Fresh Water	9,000.6	378,026
Total Fluid	9,000.6	378,026

	Amount [Bbl]	Amount [gal]
Total Clean Frac	9,000.6	378,026.0
Total Clean Wireline	-	-
Total Clean Fluid	9,000.6	378,026.0

Fluid System(s)		
Type	Amount [Bbl]	Amount [gal]
CWS-600	9,000.6	378,026
CalVisc™	0.0	0
Total Fluid	9,000.6	378,026

Stage Description		
Type	Amount [Bbl]	Amount [gal]
Pad	9,000.6	378,026
Total Fluid	9,000.6	378,026



SUMMARY - FRACTURING ZONE 6 TO 6

Start Time: 10/6/25 7:27 PM
 End Time: 10/6/25 9:26 PM

AFE#: 0
 County: 0
 Formation: Cameo

SO Number: 250343U.F18.S1
 Program #: 250343U.F18-1
 District: Grand Junction
 State: Colorado

TREATMENT

Volume				Pressures			Slurry Rate		Exposure	
Clean [Bbl]	Clean [gal]	Slurry [Bbl]	Slurry [gal]	Wireline [Bbl]	Pad [Bbl]	Max [psi]	Average [psi]	Max [bbl/min]	Average [bbl/min]	Time [hh:mm:ss]
9,000.0	378,002	9,000.0	378,002	0.0	9,000.0	5,206	4,402	80.7	76.7	1:57:18

TECHNICAL

Treatment					Shut in Pressure					
Opening [psi]	Annulus [psi]	Load Hole [Bbl]	Break [psi]	Rate Break [bbl/min]	ISIP [psi]	1 Min [psi]	5 Min [psi]	10 Min [psi]	15 Min [psi]	Frac Gradient [psi/ft]
80	0	0	281	15	294	0	0	0	0	0.47

Flush Volumes			Flush Pressures		Perforations			Miscellaneous		
Flush [Bbl]	Flush [gal]	Over/UnderFlus [Bbl]	Max [psi]	Average [psi]	Displacement [Bbl]	Top Perf [ft]	Bottom Perf [ft]	TVD [ft]	Aux psi	Aux psi
0.0	0	-131.5	0	0	131.5	8,459	8,705	8,459		

MATERIALS

Note: Percent variance is reported as 0% if variance is within 1 gallon

Chemicals				Proppants					
Chemical Name	Digital [gal]	Physical [gal]	Variance [%]	Type	Pumped [lb]	Designed [lb]	Variance [%]	Minimum Conc. [ppg]	Maximum Conc. [ppg]
CalVisc™ HB 6870, High Viscosity Friction Reducer	61.8	62.0	0.0%						
Fincide GQ 12 A, Biocide	92.1	92.0	0.0%						
Total Proppant					0	0			

FLUIDS

Base Fluid(s)		
Fluid Type	Amount [Bbl]	Amount [gal]
Fresh Water	9,000.0	378,002
Total Fluid	9,000.0	378,002
	Amount [Bbl]	Amount [gal]
Total Clean Frac	9,000.0	378,002.0
Total Clean Wireline	-	-
Total Clean Fluid	9,000.0	378,002.0

Fluid System(s)		
Type	Amount [Bbl]	Amount [gal]
CWS-600	9,000.0	378,002
CalVisc™	0.0	0
Total Fluid	9,000.0	378,002

Stage Description		
Type	Amount [Bbl]	Amount [gal]
Pad	9,000.0	378,002
Total Fluid	9,000.0	378,002



SUMMARY - FRACTURING ZONE 7 TO 7

Start Time: 10/7/25 2:14 AM
 End Time: 10/7/25 4:12 AM

AFE#: 0
 County: 0
 Formation: Cameo

SO Number: 250343U.F18.S1
 Program #: 250343U.F18-1
 District: Grand Junction
 State: Colorado

TREATMENT

Volume				Pressures			Slurry Rate		Exposure	
Clean [Bbl]	Clean [gal]	Slurry [Bbl]	Slurry [gal]	Wireline [Bbl]	Pad [Bbl]	Max [psi]	Average [psi]	Max [bbl/min]	Average [bbl/min]	Time [hh:mm:ss]
9,000.3	378,013	9,000.3	378,013	0.0	9,000.3	4,562	3,746	81.6	77.1	1:56:40

TECHNICAL

Treatment					Shut in Pressure					
Opening [psi]	Annulus [psi]	Load Hole [Bbl]	Break [psi]	Rate Break [bbl/min]	ISIP [psi]	1 Min [psi]	5 Min [psi]	10 Min [psi]	15 Min [psi]	Frac Gradient [psi/ft]
0	0	0	70	20	88	0	0	0	0	0.44

Flush Volumes			Flush Pressures		Perforations			Miscellaneous		
Flush [Bbl]	Flush [gal]	Over/UnderFlus [Bbl]	Max [psi]	Average [psi]	Displacement [Bbl]	Top Perf [ft]	Bottom Perf [ft]	TVD [ft]	Aux psi	Aux psi
0.0	0	-127.3	0	0	127.3	8,192	8,433	8,192		

MATERIALS

Note: Percent variance is reported as 0% if variance is within 1 gallon

Chemicals				Proppants					
Chemical Name	Digital [gal]	Physical [gal]	Variance [%]	Type	Pumped [lb]	Designed [lb]	Variance [%]	Minimum Conc. [ppg]	Maximum Conc. [ppg]
CalVisc™ HB 6870, High Viscosity Friction Reducer	60.5	61.0	0.0%						
Fincide GQ 12 A, Biocide	95.4	95.0	0.0%						
				Total Proppant	0	0			

FLUIDS

Base Fluid(s)		
Fluid Type	Amount [Bbl]	Amount [gal]
Fresh Water	9,000.3	378,013
Total Fluid	9,000.3	378,013
Total Clean Fluid		
Fluid Type	Amount [Bbl]	Amount [gal]
Total Clean Frac	9,000.3	378,013.2
Total Clean Wireline	-	-
Total Clean Fluid	9,000.3	378,013.2

Fluid System(s)		
Type	Amount [Bbl]	Amount [gal]
CWS-600	9,000.3	378,013
CalVisc™	0.0	0
Total Fluid	9,000.3	378,013

Stage Description		
Type	Amount [Bbl]	Amount [gal]
Pad	9,000.3	378,013
Total Fluid	9,000.3	378,013



SUMMARY - FRACTURING ZONE 1 TO 7

Start Time: 10/4/25 3:40 PM
 End Time: 10/7/25 4:12 AM

AFE#: 0
 County: 0
 Formation: Cameo

SO Number: 250343U.F18.S1
 Program #: 250343U.F18-1
 State: Colorado
 District: Grand Junction

TREATMENT

Volume				Pressures			Slurry Rate		Exposure	
Clean [Bbl]	Clean [gal]	Slurry [Bbl]	Slurry [gal]	Wireline [Bbl]	Pad [Bbl]	Max [psi]	Average [psi]	Max [bbl/min]	Average [bbl/min]	Time [hh:mm:ss]
66,995.4	2,813,807	66,995.4	2,813,807	0.0	66,995.4		5,267	81.6	75.1	14:55:28

TECHNICAL

Treatment					Shut in Pressure					
Opening [psi]	Annulus [psi]	Load Hole [Bbl]	Break [psi]	Rate Break [bbl/min]	ISIP [psi]	1 Min [psi]	5 Min [psi]	10 Min [psi]	15 Min [psi]	Frac Gradient [psi/ft]
0	0	0	70	20	88	0	0	0	0	0.44

Flush Volumes			Flush Pressures		Perforations			Miscellaneous		
Flush [Bbl]	Flush [gal]	Over/UnderFlus [Bbl]	Max [psi]	Average [psi]	Displacement [Bbl]	Top Perf [ft]	Bottom Perf [ft]	TVD [ft]	Aux psi	Aux psi
0.0	0	-127.3	0	0	127.3	8,192	10,213	8,192		

MATERIALS

Note: Percent variance is reported as 0% if variance is within 1 gallon

Chemicals				Proppants					
Chemical Name	Digital [gal]	Physical [gal]	Variance [%]	Type	Pumped [lb]	Designed [lb]	Variance [%]	Minimum Conc. [ppg]	Maximum Conc. [ppg]
CalVisc™ HB 6870, High Viscosity Friction Reducer	446.1	447.0	0.0%						
Fincide GQ 12 A, Biocide	699.9	699.0	0.0%						
				Total Proppant	0	0			

FLUIDS

Base Fluid(s)			
Fluid Type	Amount [Bbl]	Amount [gal]	
Fresh Water	66,995.4	2,813,807	
Total Fluid	66,995.4	2,813,807	
	Amount [Bbl]	Amount [gal]	
Total Clean Frac	66,995.4	2,813,806.7	
Total Clean Wireline	-	-	
Total Clean Fluid	66,995.4	2,813,806.7	

Fluid System(s)		
Type	Amount [Bbl]	Amount [gal]
CWS-600	66,995.4	2,813,807
CalVisc™	0.0	0
Total Fluid	66,995.4	2,813,807

Stage Description		
Type	Amount [Bbl]	Amount [gal]
Pad	66,995.4	2,813,807
Total Fluid	66,995.4	2,813,807

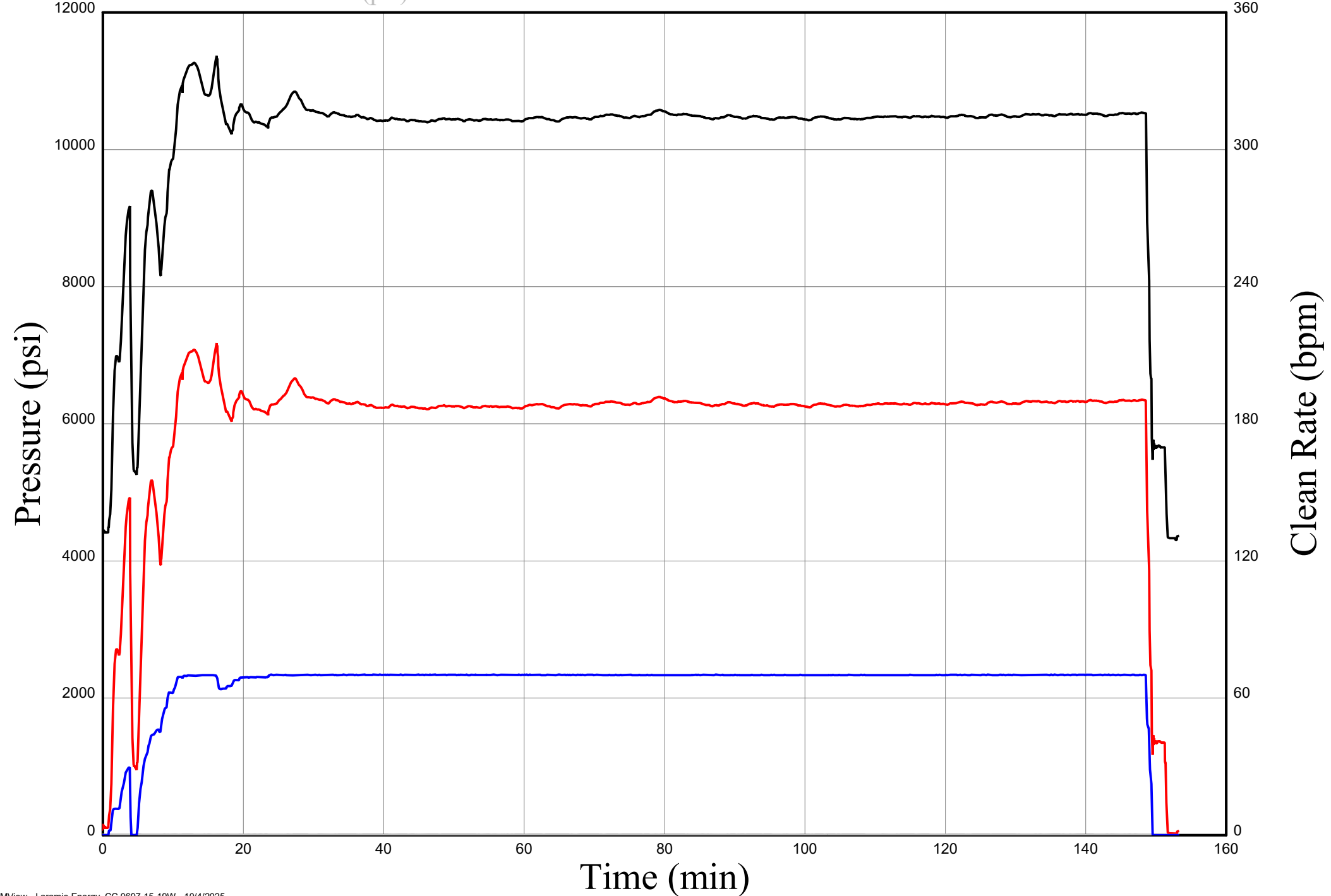
Surface and Treatment Plot, Laramie Energy CC 0697-15-19W, Stage 1

Well Pad Treating Pressure (psi)

Clean Rate (bpm)

Bottom Hole Pressure (psi)

15-19W Backside (psi)

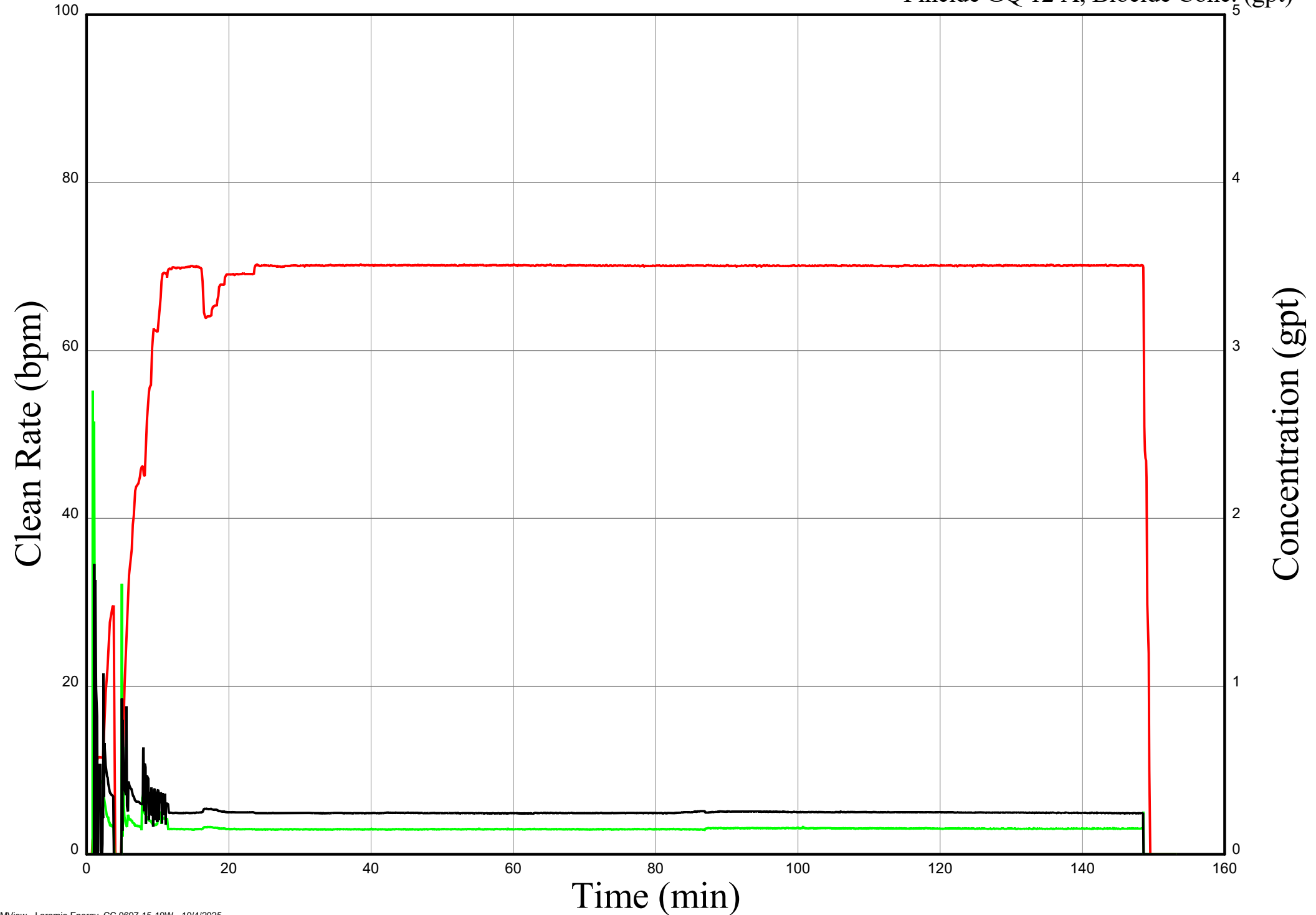


Chemical Plot, Laramie Energy CC 0697-15-19W, Stage 1

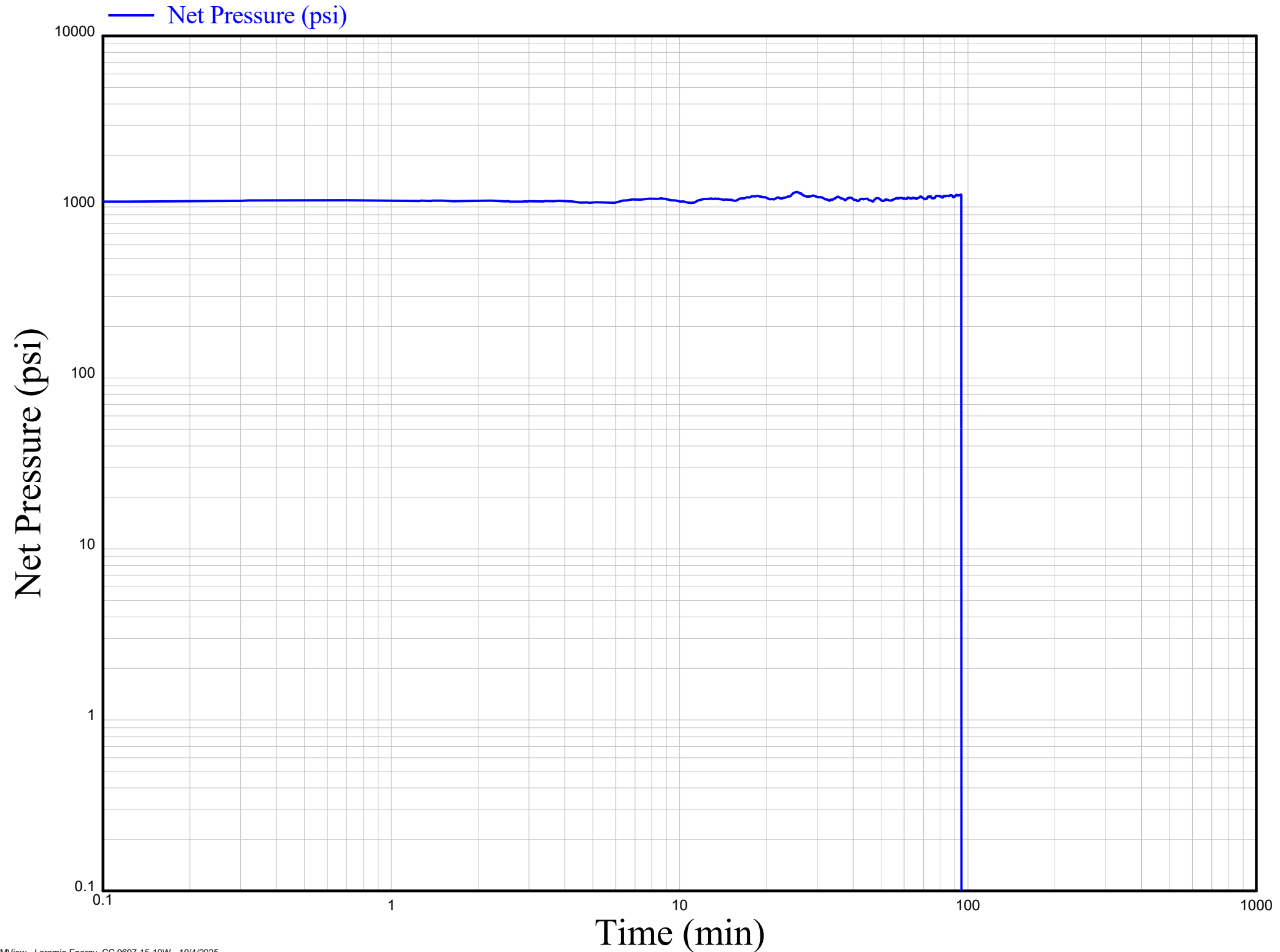
— Clean Rate (bpm)

— Calvisc HB 6870, FR Conc. (gpt)

— Fincide GQ 12 A, Biocide Conc. (gpt)



NBHP Plot, Laramie Energy CC 0697-15-19W, Stage 1



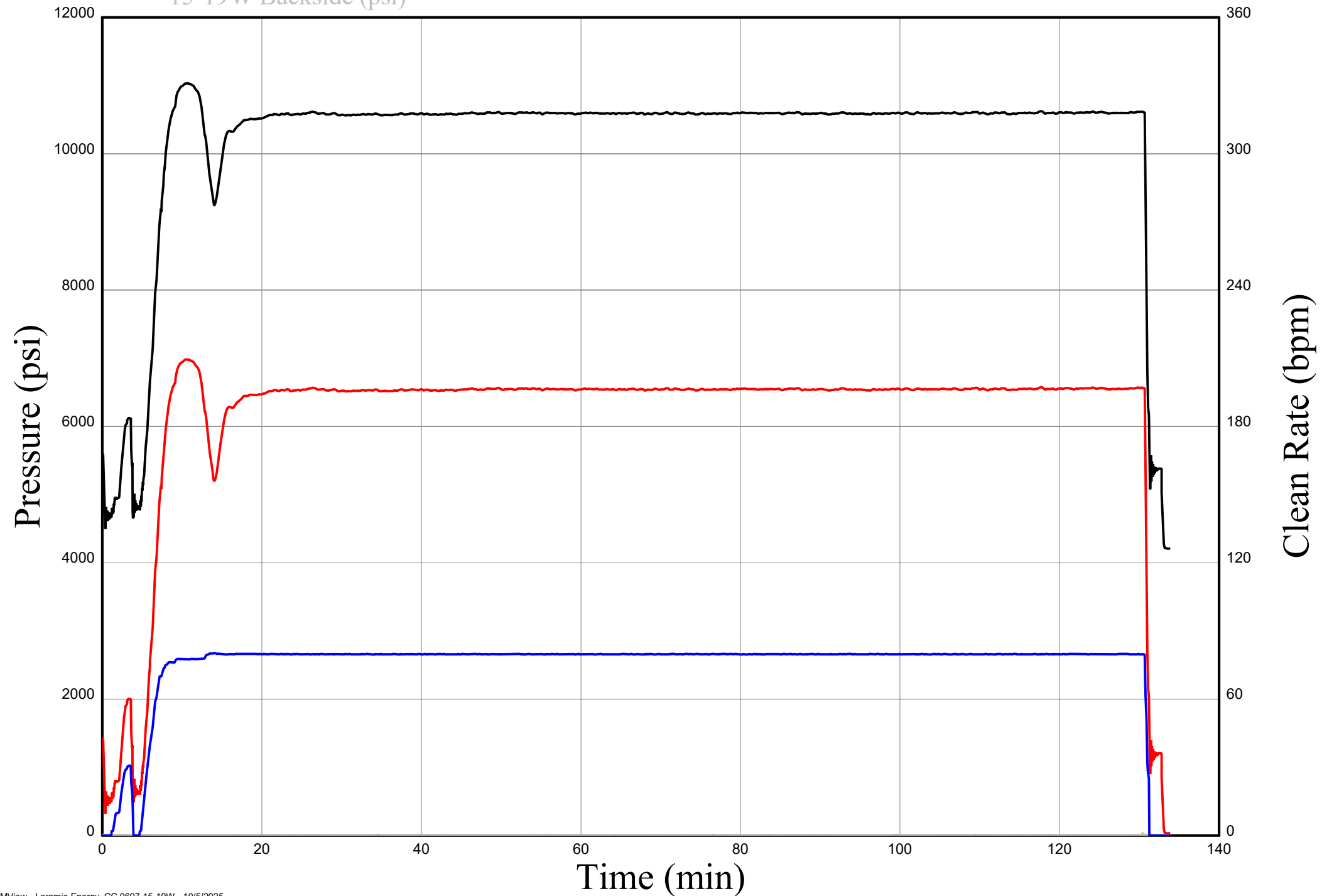
Surface and Treatment Plot, Laramie Energy CC 0697-15-19W, Stage 2

Well Pad Treating Pressure (psi)

Clean Rate (bpm)

Bottom Hole Pressure (psi)

15-19W Backside (psi)

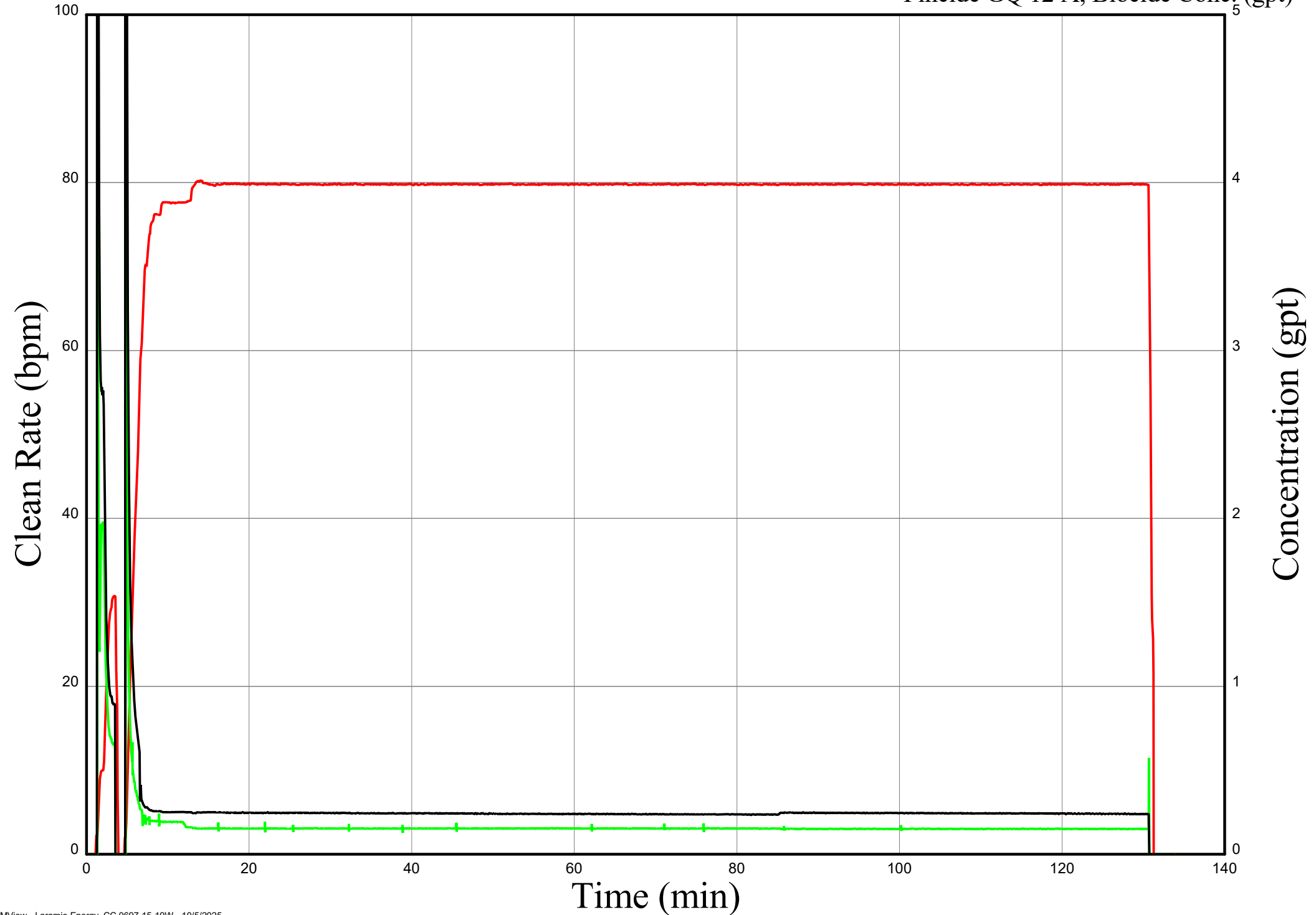


Chemical Plot, Laramie Energy CC 0697-15-19W, Stage 2

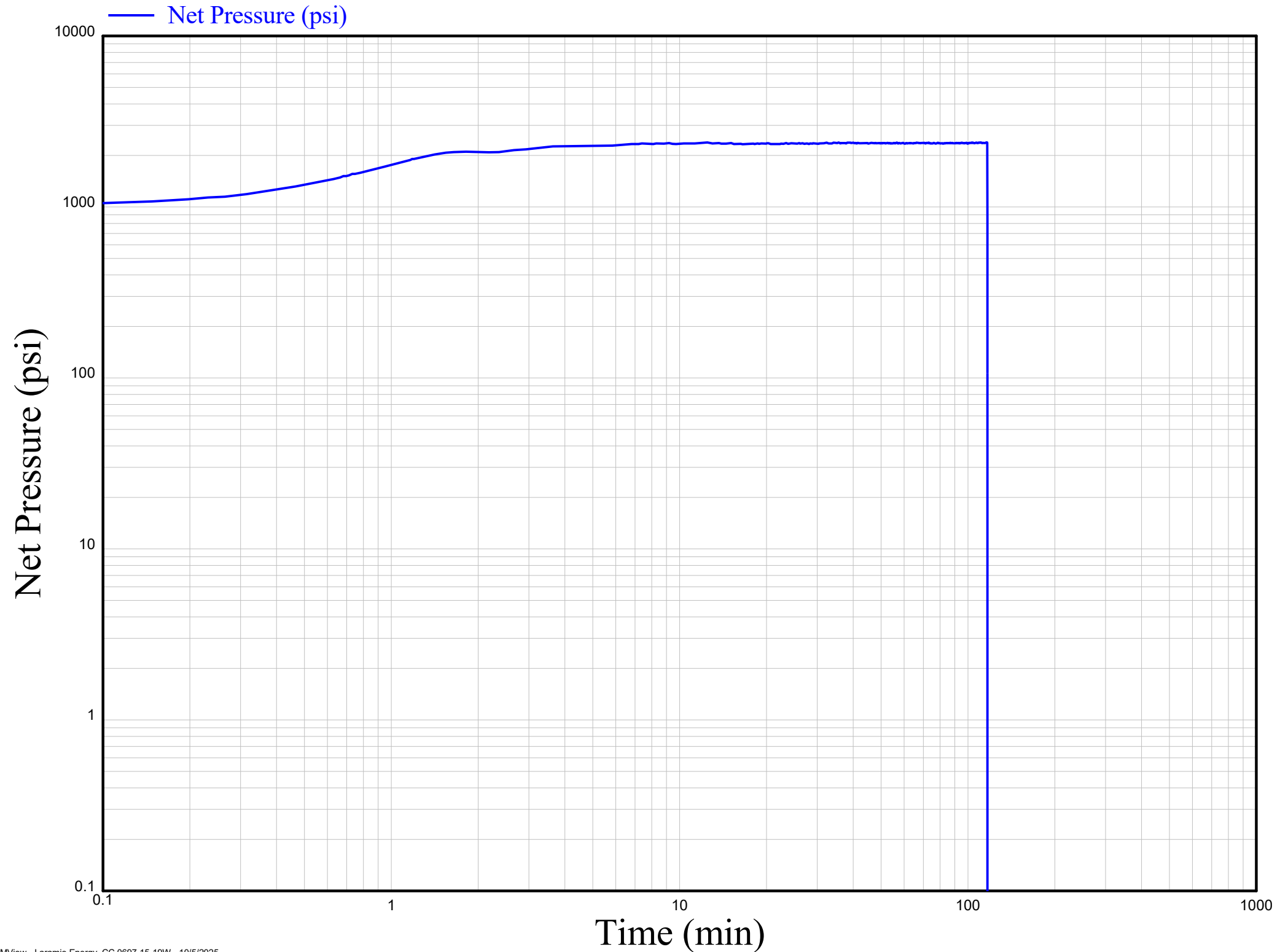
— Clean Rate (bpm)

— Calvisc HB 6870, FR Conc. (gpt)

— Fincide GQ 12 A, Biocide Conc. (gpt)



NBHP Plot, Laramie Energy CC 0697-15-19W, Stage 2



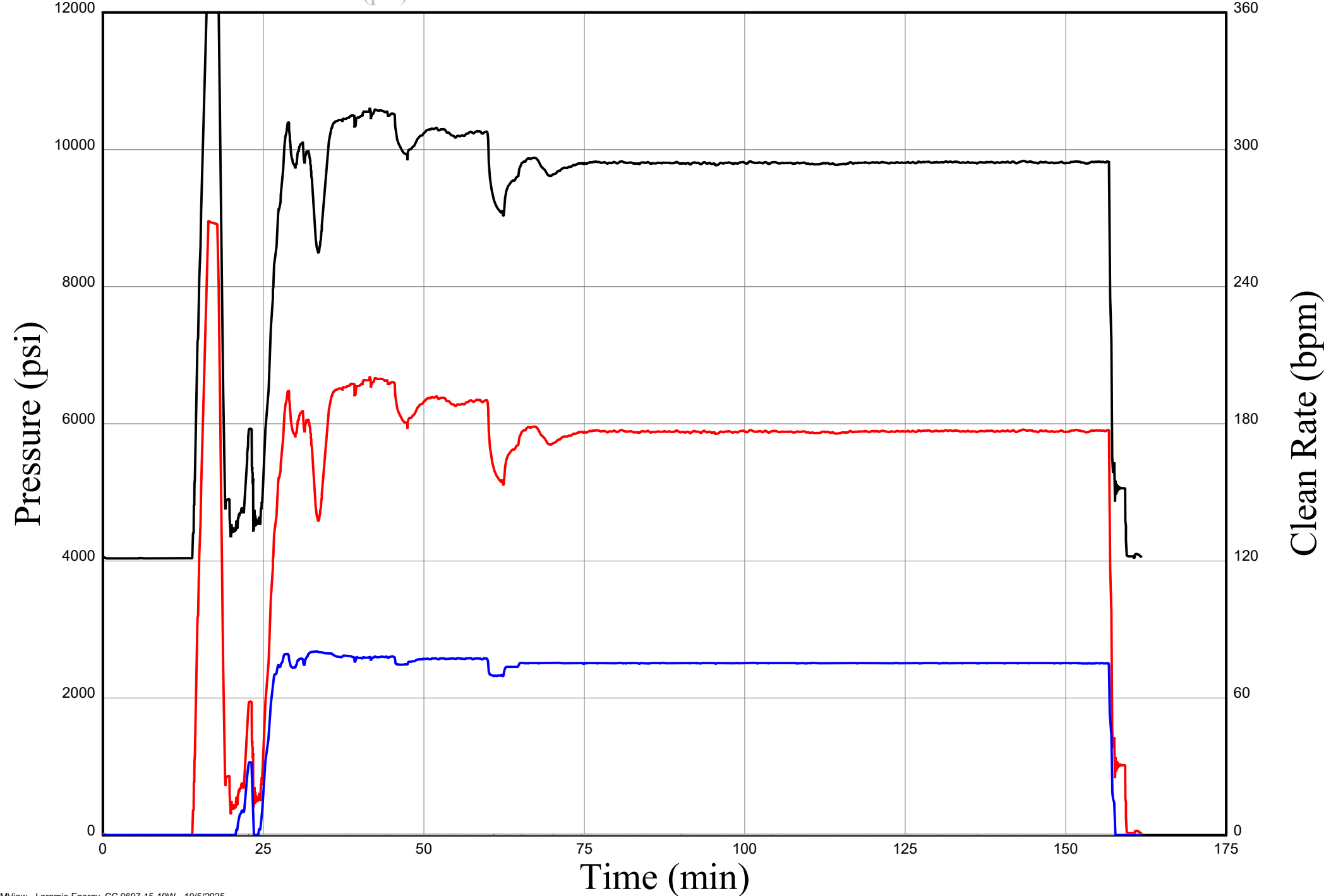
Surface and Treatment Plot, Laramie Energy CC 0697-15-19W, Stage 3

— Well Pad Treating Pressure (psi)

— Clean Rate (bpm)

— Bottom Hole Pressure (psi)

— 15-19W Backside (psi)

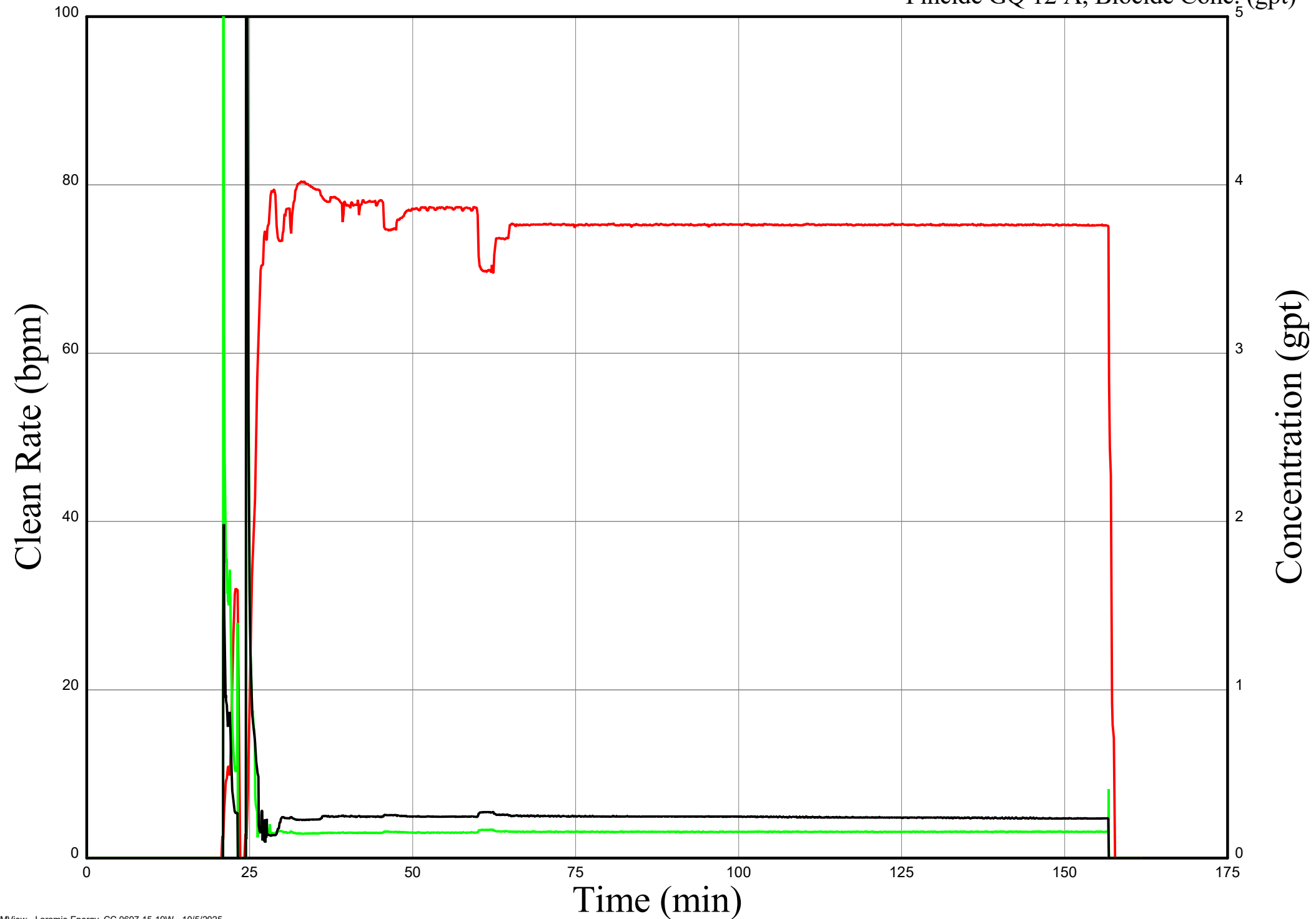


Chemical Plot, Laramie Energy CC 0697-15-19W, Stage 3

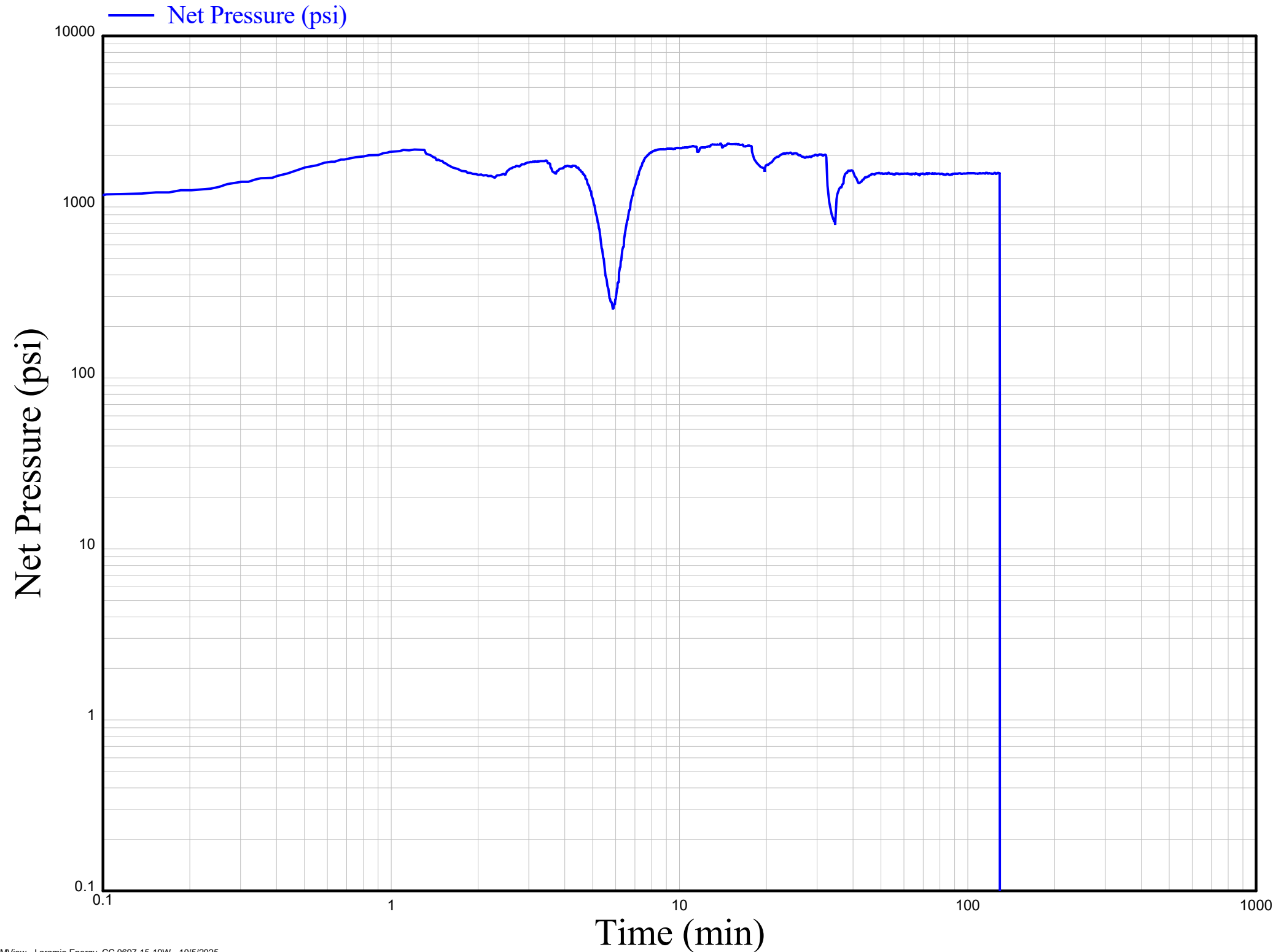
— Clean Rate (bpm)

— Calvisc HB 6870, FR Conc. (gpt)

— Fincide GQ 12 A, Biocide Conc. (gpt)



NBHP Plot, Laramie Energy CC 0697-15-19W, Stage 3



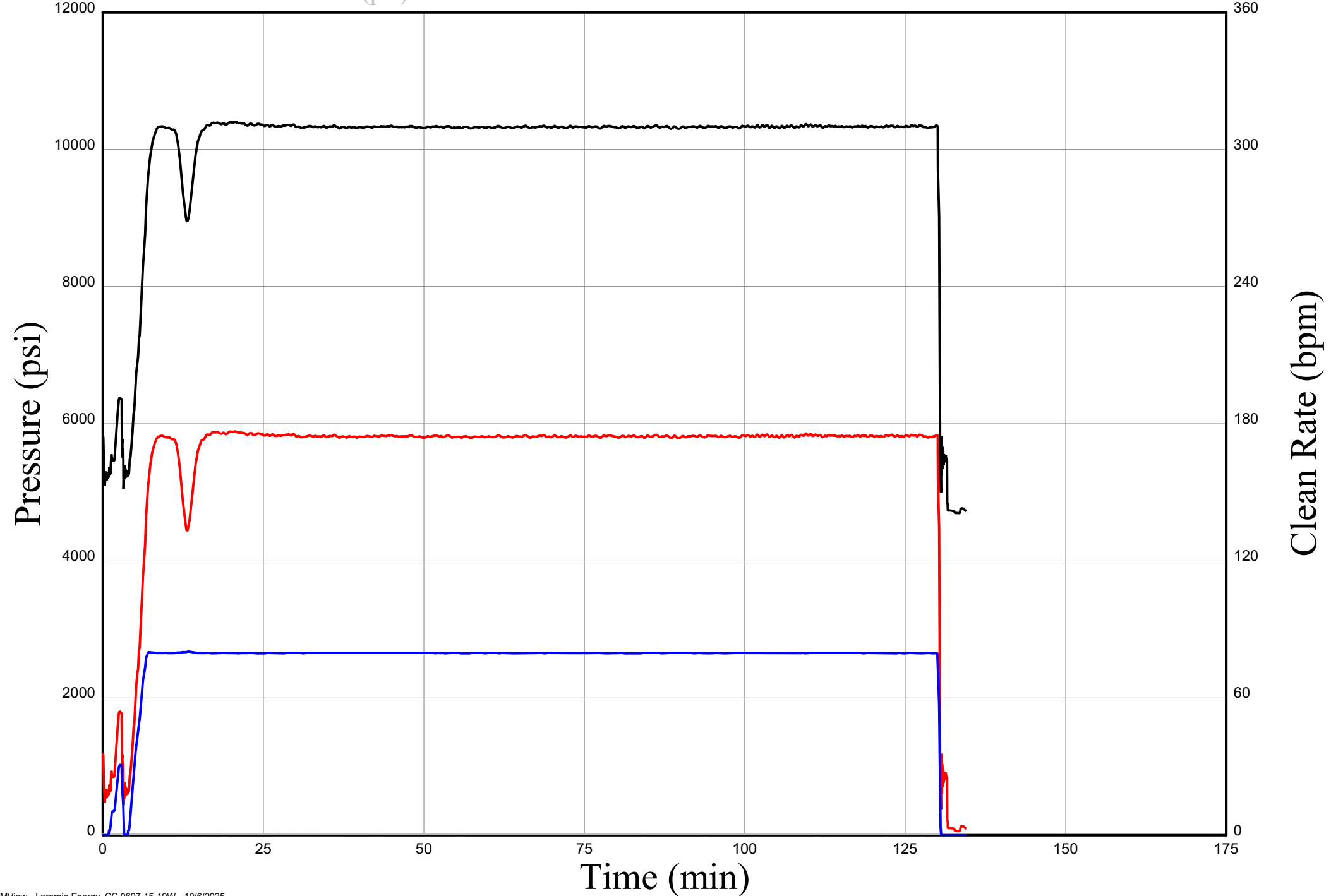
Surface and Treatment Plot, Laramie Energy CC 0697-15-19W, Stage 4

— Well Pad Treating Pressure (psi)

— Clean Rate (bpm)

— Bottom Hole Pressure (psi)

— 15-19W Backside (psi)

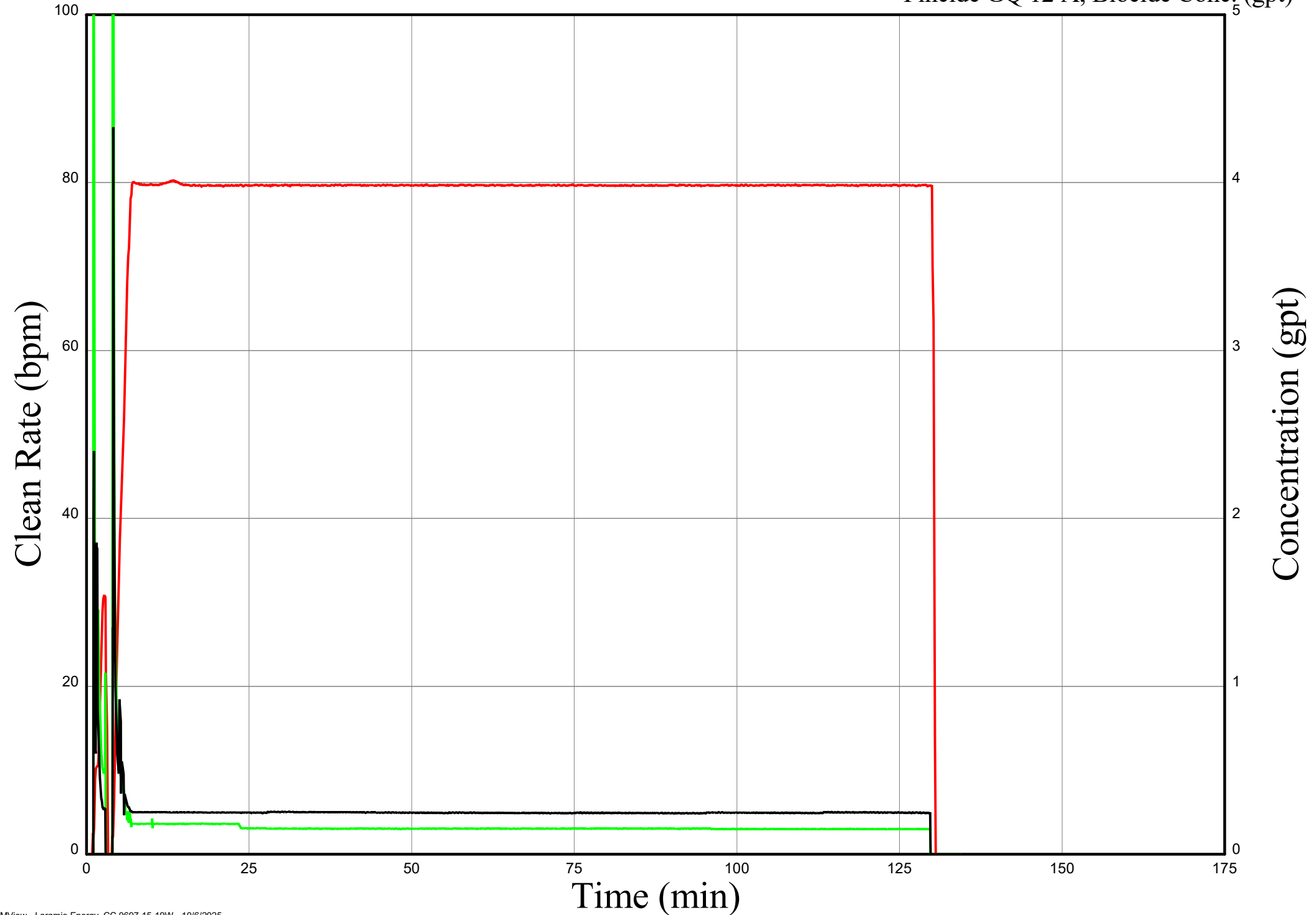


Chemical Plot, Laramie Energy CC 0697-15-19W, Stage 4

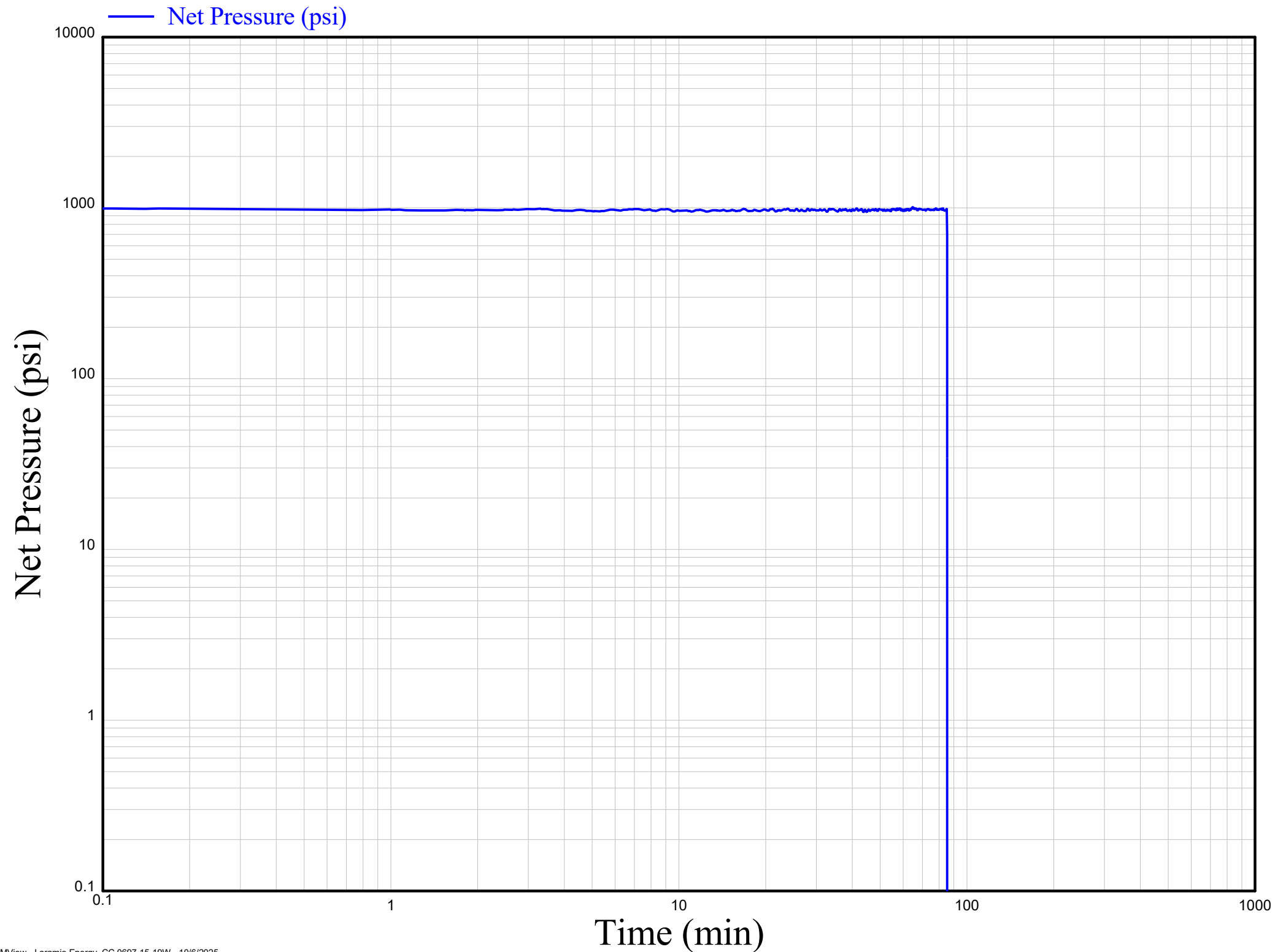
— Clean Rate (bpm)

— Calvisc HB 6870, FR Conc. (gpt)

— Fincide GQ 12 A, Biocide Conc. (gpt)



NBHP Plot, Laramie Energy CC 0697-15-19W, Stage 4



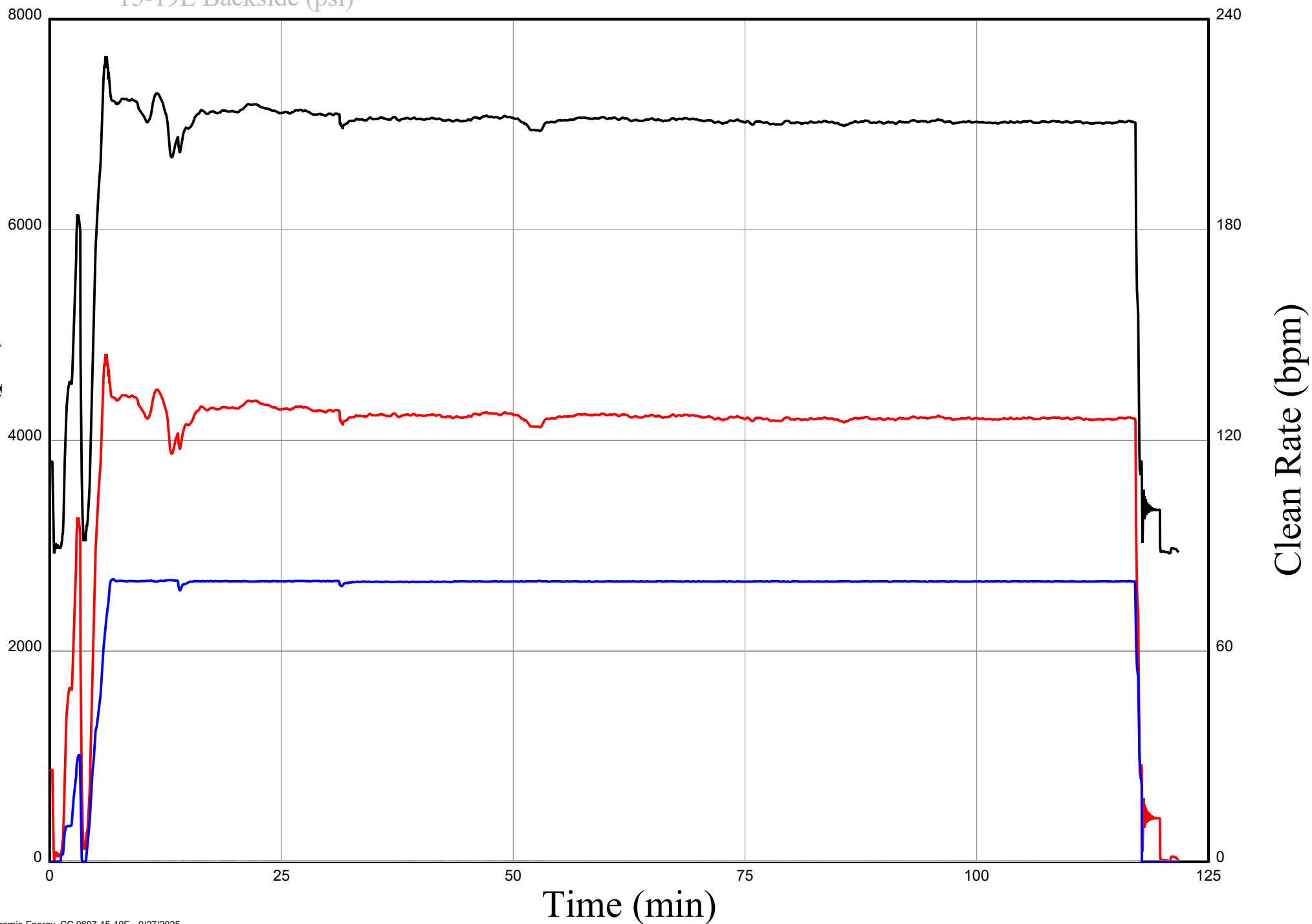
Surface and Treatment Plot, Laramie Energy CC 0697-15-19E, Stage 5

— Well Pad Treating Pressure (psi)

— Clean Rate (bpm)

— Bottom Hole Pressure (psi)

— 15-19E Backside (psi)

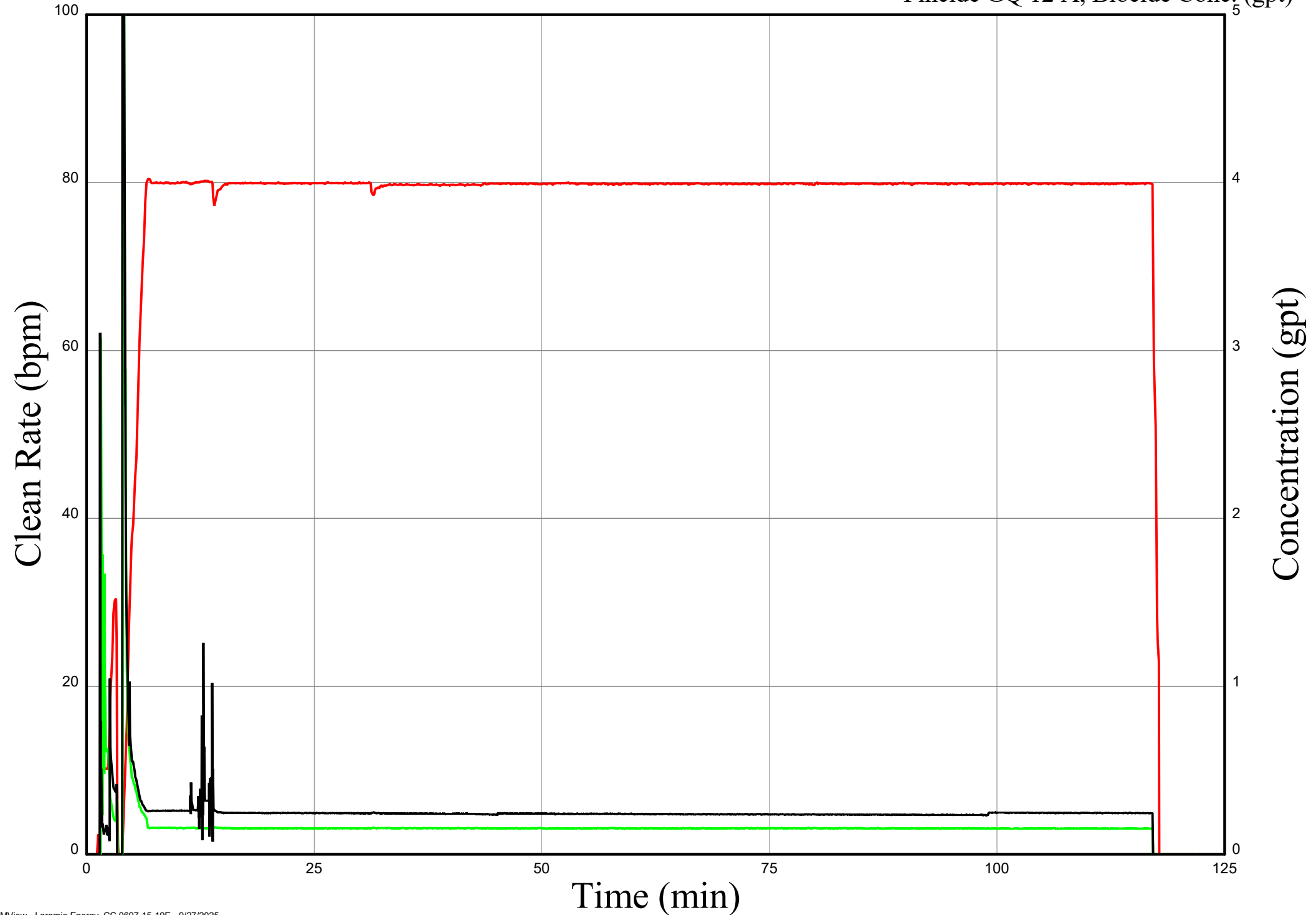


Chemical Plot, Laramie Energy CC 0697-15-19E, Stage 5

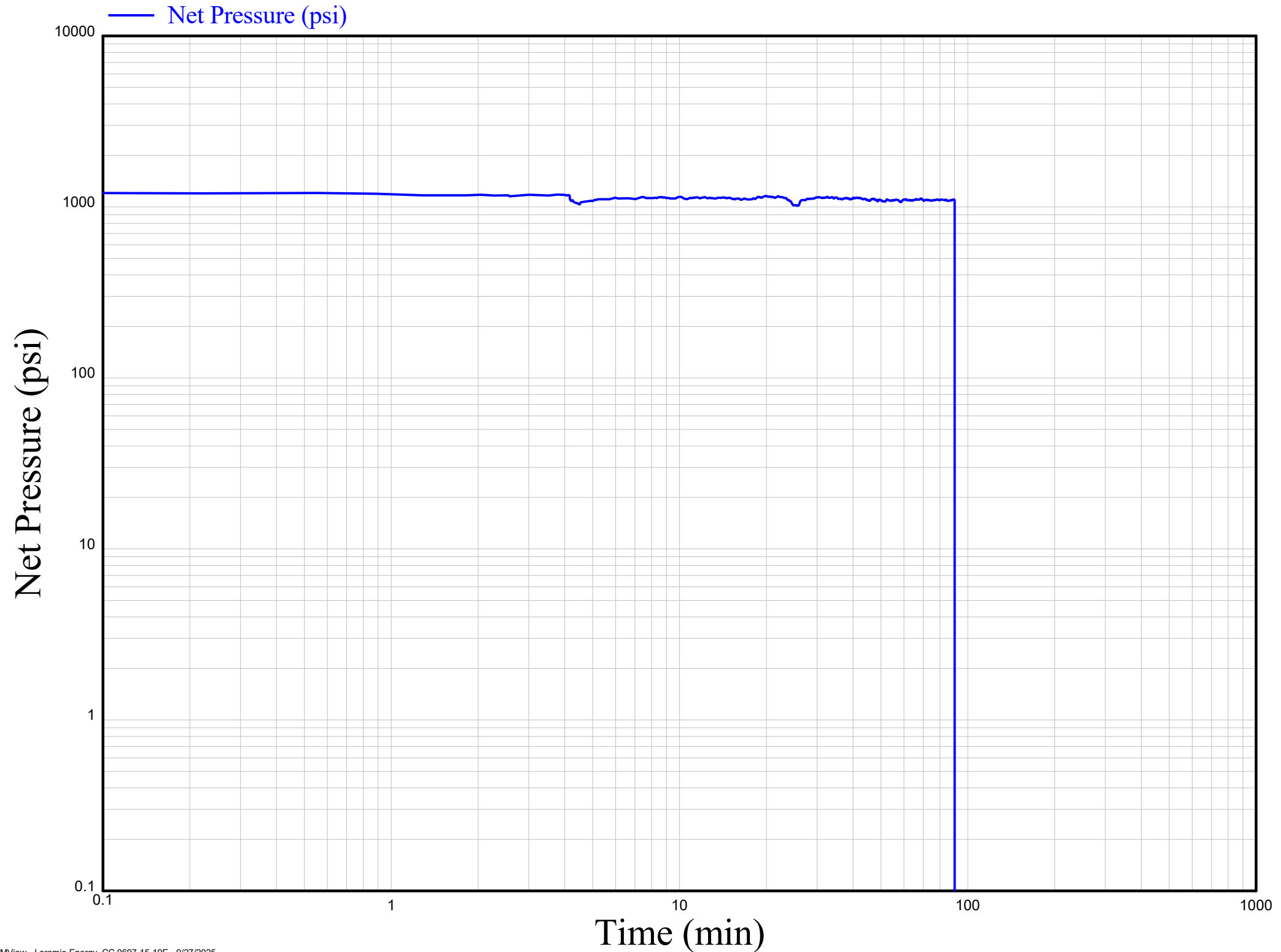
— Clean Rate (bpm)

— Calvisc HB 6870, FR Conc. (gpt)

— Fincide GQ 12 A, Biocide Conc. (gpt)



NBHP Plot, Laramie Energy CC 0697-15-19E, Stage 5



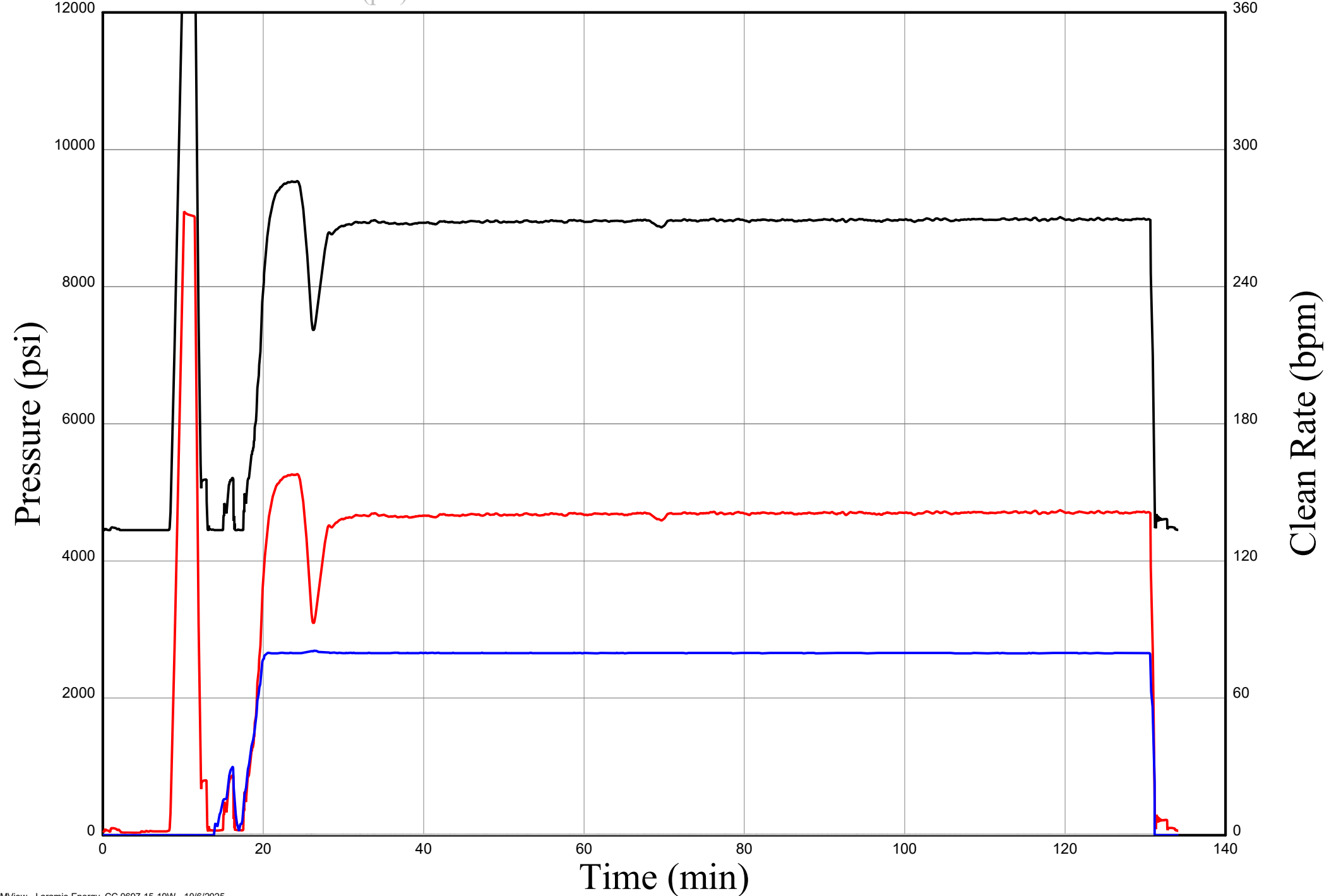
Surface and Treatment Plot, Laramie Energy CC 0697-15-19W, Stage 6

Well Pad Treating Pressure (psi)

Clean Rate (bpm)

Bottom Hole Pressure (psi)

15-19W Backside (psi)

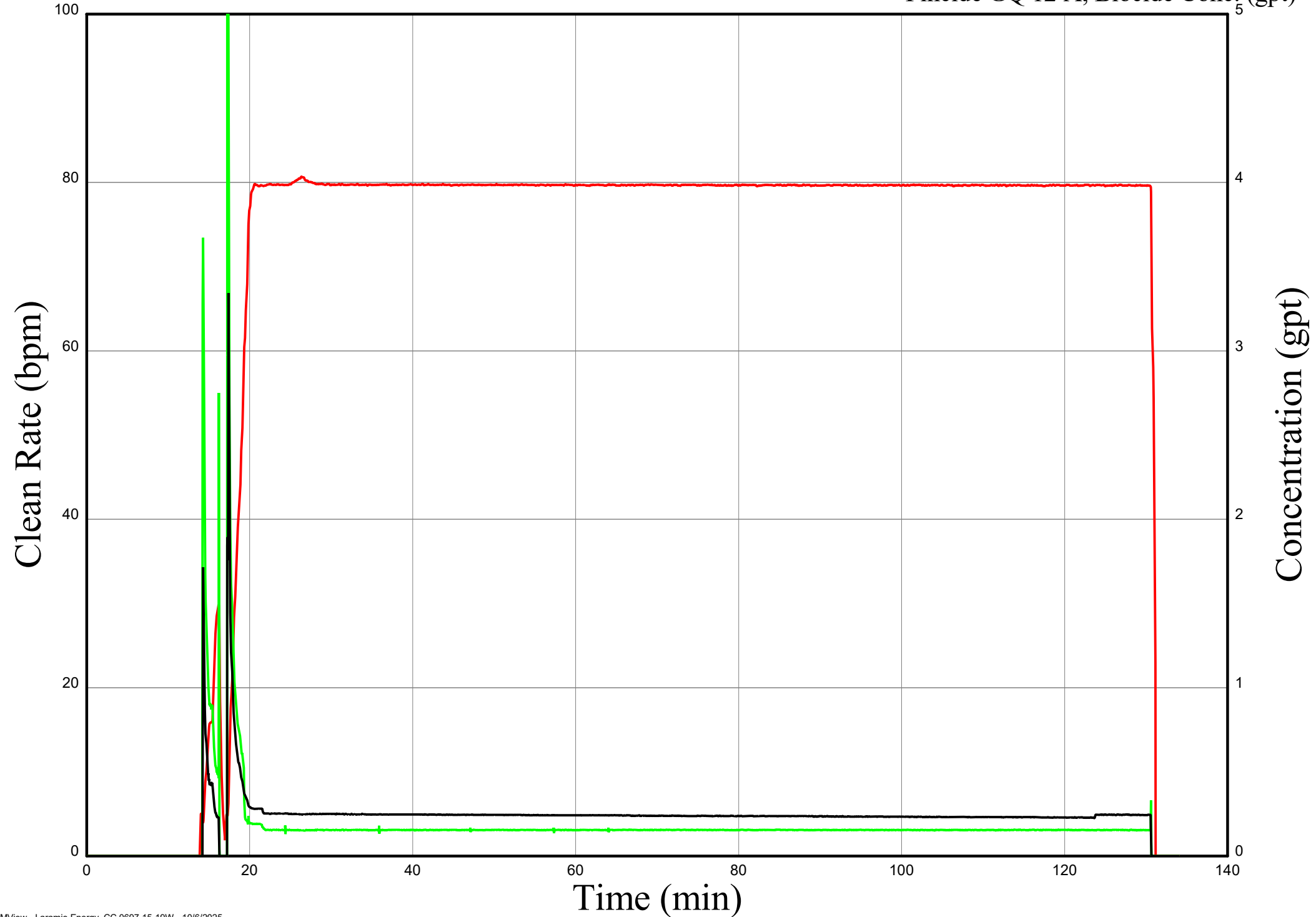


Chemical Plot, Laramie Energy CC 0697-15-19W, Stage 6

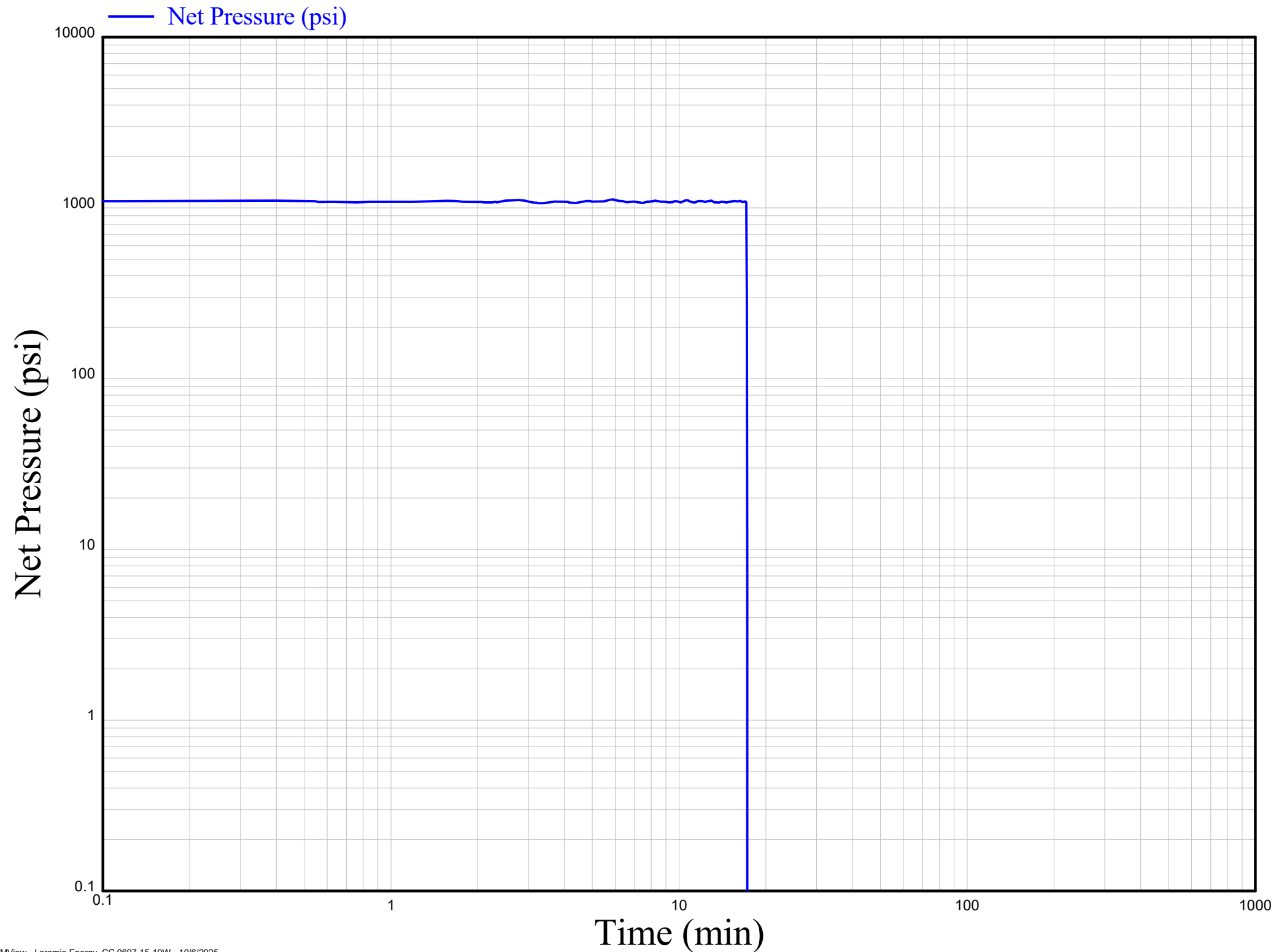
— Clean Rate (bpm)

— Calvisc HB 6870, FR Conc. (gpt)

— Fincide GQ 12 A, Biocide Conc. (gpt)



NBHP Plot, Laramie Energy CC 0697-15-19W, Stage 6



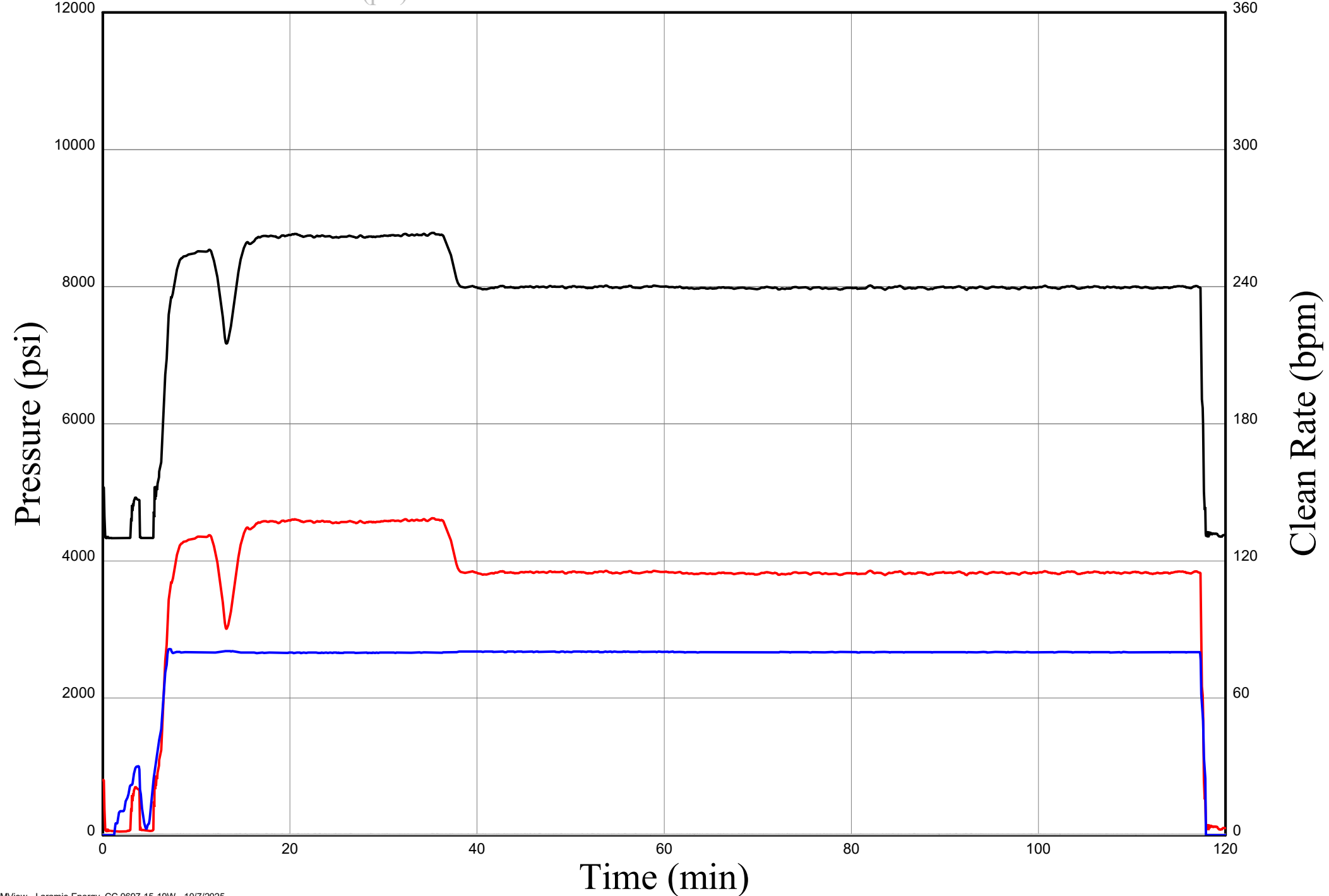
Surface and Treatment Plot, Laramie Energy CC 0697-15-19W, Stage 7

— Well Pad Treating Pressure (psi)

— Clean Rate (bpm)

— Bottom Hole Pressure (psi)

— 15-19W Backside (psi)

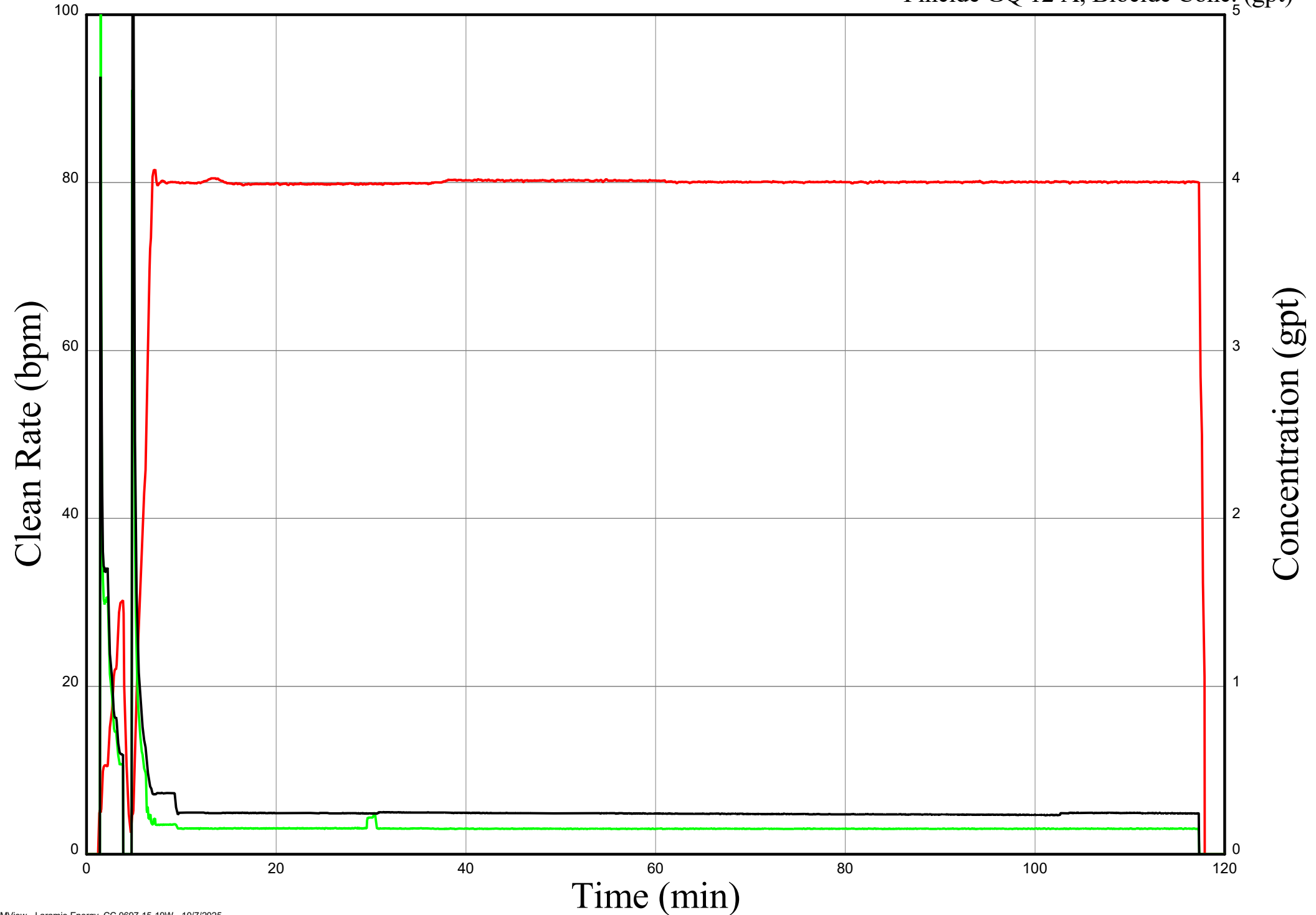


Chemical Plot, Laramie Energy CC 0697-15-19W, Stage 7

— Clean Rate (bpm)

— Calvisc HB 6870, FR Conc. (gpt)

— Fincide GQ 12 A, Biocide Conc. (gpt)



NBHP Plot, Laramie Energy CC 0697-15-19W, Stage 7

