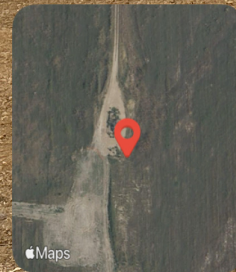


Looking at the former STATE #14 well and area of Spill/Release Point ID 492280. An open excavation is visible. The pumping unit has been removed.



Frederick, CO, United States

Lat 40.096768, Long -104.944468

12/02/2025 15:24 GMT-07:00

ECMC : Environmental Inspection



46°F

300° NW

3.0 mph

4991.44 ft

10.15 m

Gray staining is visible within the excavation.



Frederick, CO, United States

Lat 40.096872, Long -104.944544

12/02/2025 15:24 GMT-07:00

ECMC: Environmental Inspection



46°F

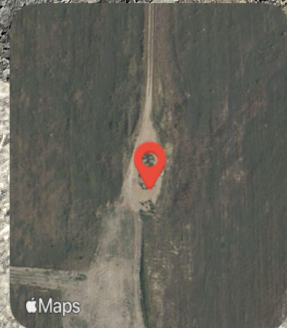
231° SW

Maps


3.0 mph


4991.24 ft


7.11 m





Frederick, CO, United States
Lat 40.096876, Long -104.944563
12/02/2025 15:25 GMT-07:00
ECMC : Environmental Inspection

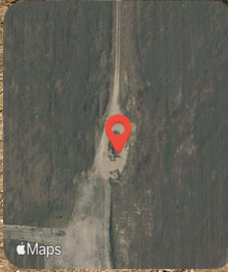
 46°F



 253° W




 3.0 mph  4989.3 ft  8.82 m

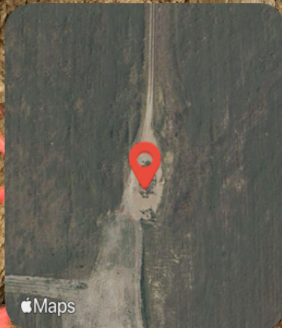
Orange construction fencing partially surrounds the excavation. A trench associated with Flowline Facility ID 476252 is visible running southwest from the former well and will be addressed in a separate Field Inspection Report.



 **Frederick, CO, United States**
Lat 40.096914, Long -104.944552
12/02/2025 15:25 GMT-07:00
ECMC : Environmental Inspection

 46°F
 200° S

 3.0 mph  4987.96 ft  8.14 m



Frederick, CO, United States
Lat 40.096913, Long -104.944601
12/02/2025 15:25 GMT-07:00
ECMC : Environmental Inspection



46°F

256° W

3.0 mph

4988.29 ft

7.54 m

Apple Maps