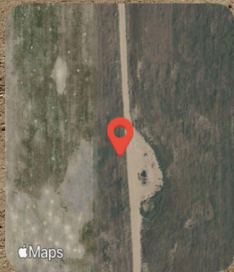


Looking at the former STATE #13 well. An open excavation is visible. The pumping unit has been partially dismantled.



Frederick, CO, United States

Lat 40.096986, Long -104.954145

12/02/2025 14:46 GMT-07:00

ECMC : Environmental Inspection



46°F

27° NE

3.0 mph

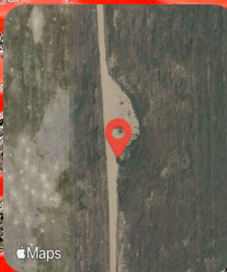
5034.71 ft

4.31 m

Gray stained soil is visible adjacent to the excavation.



Gray staining is visible throughout the excavation. The well is exposed but has not been cut and capped.



Frederick, CO, United States

Lat 40.096711, Long -104.953970

12/02/2025 14:47 GMT-07:00

ECMC : Environmental Inspection



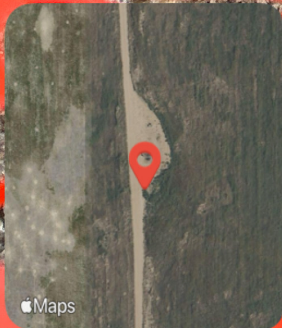
46°F

276° W

3.0 mph

5034.48 ft

7.9 m



Frederick, CO, United States

Lat 40.096716, Long -104.953971

12/02/2025 14:47 GMT-07:00

ECMC : Environmental Inspection



46°F

8° N

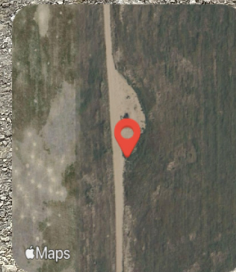
3.0 mph

5033.73 ft

6.52 m

Apple Maps

Orange construction fencing has been installed but does not fully encompass the perimeter of the excavation.



Frederick, CO, United States

Lat 40.096679, Long -104.953948

12/02/2025 14:47 GMT-07:00

ECMC - Environmental Inspection



46°F

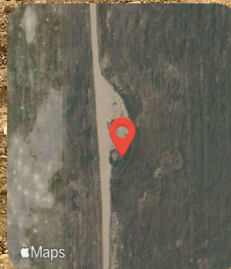
258° W

3.0 mph

5031.99 ft

8.32 m

Wet/stained soil is visible adjacent to the well.



Frederick, CO, United States

Lat 40.096718, Long -104.953881

12/02/2025 14:47 GMT-07:00

ECMC : Environmental Inspection



46°F

219° SW

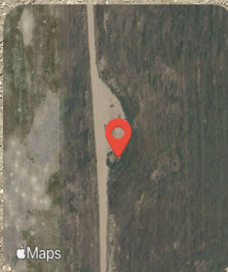
3.0 mph






5033.63 ft

6.66 m

Gray staining is visible on location. A petroleum hydrocarbon odor was observed when the stained soil was disturbed.



 **Frederick, CO, United States**
Lat 40.096725, Long -104.953891
12/02/2025 14:48 GMT-07:00
ECMC : Environmental Inspection

 46°F
 84° E
 3.0 mph  5034.06 ft  7.39 m

Trash is visible adjacent to the location.



 **Frederick, CO, United States**
Lat 40.096759, Long -104.954112
12/02/2025 14:48 GMT-07:00
ECMC : Environmental Inspection

 46°F
 113° SE

 3.0 mph  5036.42 ft  6.5 m