

Looking at the spill response area. Above ground flowline manifolds and a sign which reads "Amoco Production Company" are visible in the foreground. Two stockpiles, an excavator, and an excavation with orange construction fencing are visible in the midground. Residential building units are visible in the background.

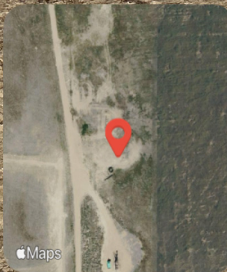


Frederick, CO, United States
Lat: 40.09443, Long: -104.95697
TID: 02/02/2014 1:58:09M
EUMC: Environmental Inspection

3.0 mph
5041.27 ft
5.07 m

46°F
GA NE

Looking at the east stockpile. A liner is visible; however, the liner is torn, discontinuous, and overtopped by soil.



Frederick, CO, United States
Lat 40.093834, Long -104.954639
12/02/2025 14:59 GMT-07:00
ECMC : Environmental Inspection

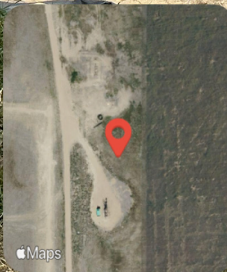
 

 46°F

 29° NE

 3.0 mph  4977.53 ft  4.74 m

The east soil stockpile is marked "contaminated".



Frederick, CO, United States

Lat 40.093558, Long -104.954554

12/02/2025 15:00 GMT-07:00

ECMC : Environmental Inspection



46°F

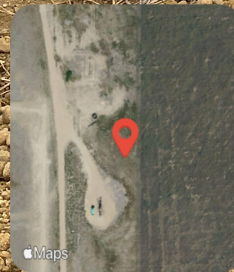
311° NW

3.0 mph

5042.03 ft

5.05 m

Areas of gray soil are visible outside of the stockpile liner.



Frederick, CO, United States

Lat 40.093552, Long -104.954452

12/02/2025 15:00 GMT-07:00

ECMC : Environmental Inspection



46°F

321° NW

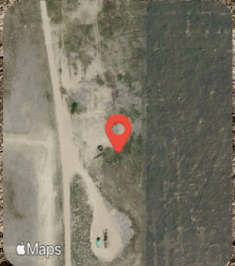
3.0 mph








5037.83 ft

5.12 m

Looking at the west stockpile. A liner is visible; however, the liner is torn, discontinuous, and overtopped by soil.




 **Frederick, CO, United States**
Lat 40.093742, Long -104.954553
12/02/2025 15:01 GMT-07:00
ECMC : Environmental Inspection

   46°F
 134° SE
 3.0 mph  5037.83 ft  4.89 m

The west soil stockpile is marked "contaminated". Green wattles are visible adjacent to the soil stockpile. A trench that appears to be associated with Flowline Facility ID 476033 is visible in the background and will be addressed in a separate Field Inspection Report.




Frederick, CO, United States
Lat 40.093625, Long -104.954841
12/02/2025 15:02 GMT-07:00
ECMC : Environmental Inspection

 46°F

 307° NW

 3.0 mph  5038.19 ft  7.13 m

Looking at the open excavation at the spill location. Multiple flowlines are exposed within the excavation. Stained soil is visible within the excavation. A petroleum hydrocarbon odor was observed in the area of the excavation and soil stockpiles.



Frederick, CO, United States

Lat 40.093607, Long -104.954813

12/02/2025 15:02 GMT-07:00

ECMC : Environmental Inspection



46°F

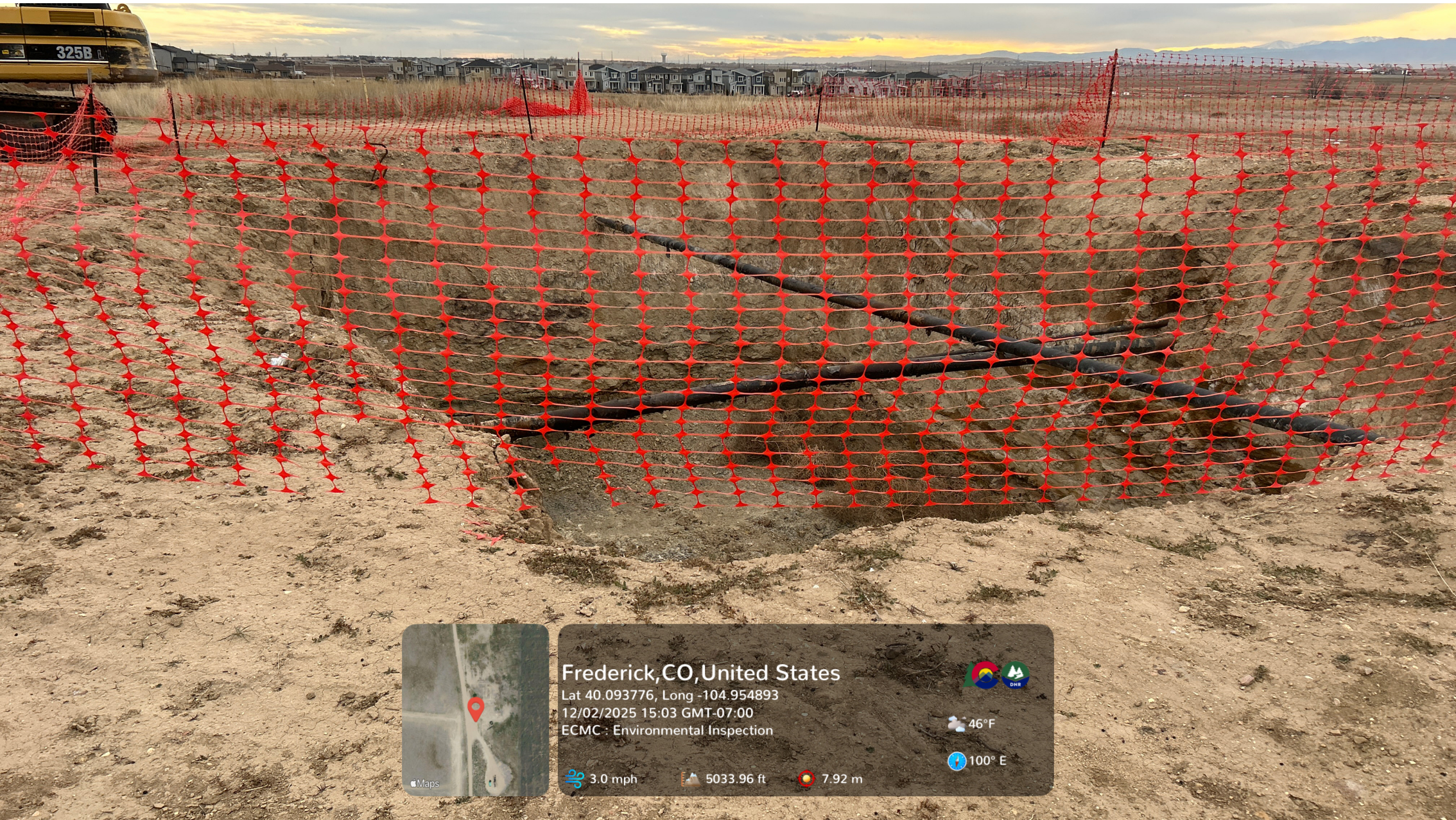
211° SW

3.0 mph

4983.86 ft

7.27 m

Orange construction fencing surrounds the excavation, but does not encompass the entire perimeter.



Frederick, CO, United States

Lat 40.093776, Long -104.954893

12/02/2025 15:03 GMT-07:00

ECMC : Environmental Inspection



46°F

100° E

3.0 mph

5033.96 ft

7.92 m

Debris is visible within the open excavation.



 **Frederick, CO, United States**
Lat 40.093594, Long -104.954982
12/02/2025 15:03 GMT-07:00
ECMC : Environmental Inspection

 46°F
 281° W
 3.0 mph  5040.06 ft  6.75 m