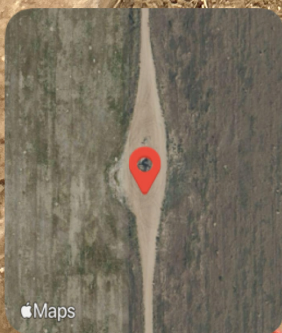


Looking south along the Flowline Facility ID 478291 from the State #6 well. Orange construction fencing has been installed along an area of the trench adjacent to the well, but does not continue. A rope with orange ribbons has been installed on both sides of the remaining length of the trench.



### Frederick, CO, United States

Lat 40.100477, Long -104.954216

12/02/2025 14:39 GMT-07:00

ECMC : Environmental Inspection



46°F

166° SE

3.0 mph

5018.14 ft

5.33 m

Apple Maps

Trash is visible adjacent to the trench.



**Frederick, CO, United States**  
Lat 40.100049, Long -104.954279  
12/02/2025 14:41 GMT-07:00  
ECMC : Environmental Inspection

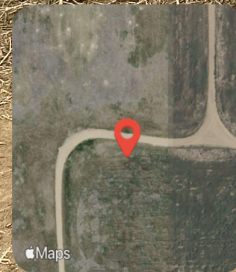
 46°F  
 244° SW

 3.0 mph  5020.01 ft  5.06 m

Segments of red fiberglass and white plastic lines oriented approximately east-northeast to west-southwest is visible within the trench. The red fiberglass line appears to have been repaired with black tape.



Looking at the trench, which does not extend through an access road.



### Frederick, CO, United States

Lat 40.095544, Long -104.954692

12/02/2025 14:51 GMT-07:00

ECMC : Environmental Inspection



46°F

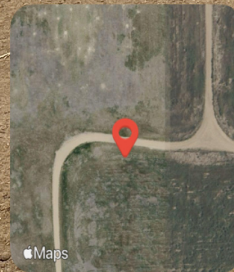
289° W

3.0 mph

5036.12 ft

9.52 m

Looking at the trench, which continues on the other side of an access road.



**Frederick, CO, United States**  
Lat 40.095562, Long -104.954686  
12/02/2025 14:51 GMT-07:00  
ECMC : Environmental Inspection





 46°F  
 68° E


 3.0 mph  5033.5 ft  8.98 m

Areas of black soil are visible.



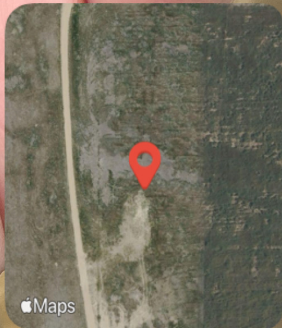
 **Frederick, CO, United States**  
Lat 40.094657, Long -104.954701  
12/02/2025 14:55 GMT-07:00  
ECMC : Environmental Inspection

 46°F  
 3.0 mph  
 5035.47 ft  
 5.89 m  
 274° W



Apple Maps

Looking at a piece of black soil. The material was friable; no odor was observed. Further characterization is necessary.



**Frederick, CO, United States**  
Lat 40.094730, Long -104.954715  
12/02/2025 14:56 GMT-07:00  
ECMC : Environmental Inspection

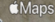
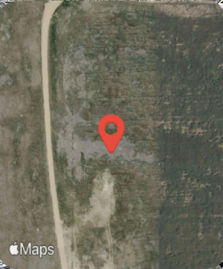
 46°F

 357° N






 3.0 mph  5031.92 ft  2.97 m


Looking at the soil profile in the areas with black soil.



**Frederick, CO, United States**  
Lat 40.094808, Long -104.954709  
12/02/2025 14:57 GMT-07:00  
ECMC : Environmental Inspection

 46°F  
 3.0 mph  
 5035.83 ft  
 8.19 m  
 329° NW

Looking at the soil profile in the areas with black soil.



Frederick, CO, United States

Lat 40.094715, Long -104.954716  
12/02/2025 14:57 GMT-07:00  
ECMC : Environmental Inspection



46°F

25° NE

Maps


3.0 mph






5035.73 ft

7.84 m

Looking near the southern terminus of the flowline. Equipment, soil stockpiles, and an excavation which appear to be associated with Spill/Release Point ID 490840 are visible and will be addressed in a separate Field Inspection Report.



 **Frederick, CO, United States**  
Lat 40.093878, Long -104.954771  
12/02/2025 14:59 GMT-07:00  
ECMC : Environmental Inspection

 46°F  
 72° E  
 3.0 mph  5041.44 ft  4.67 m

