

TABLE 1
SUMMARY OF VOLATILE ORGANIC SOIL CHEMISTRY DATA
PDC 69175
GUS LD PAD, ADAMS COUNTY, COLORADO
REM # 36714

Sample ID	Sample Date	Depth (ft)	Benzene (mg/kg)	Toluene (mg/kg)	Ethyl-Benzene (mg/kg)	Xylenes (mg/kg)	1,2,4-Trimethyl-Benzene (mg/kg)	1,3,5-Trimethyl-Benzene (mg/kg)	Naphthalene (mg/kg)	TPH (mg/kg)	TPH GRO (mg/kg)	TPH DRO (mg/kg)	TPH ORO (mg/kg)
ECMC Table 915-1 Limits (Residential SSL)			1.2	490	5.8	58	30	27	2	500	500**		
ECMC Table 915-1 Limits (Protection of Groundwater SSL)			0.0026	0.69	0.78	9.9	0.0081	0.0087	0.0038	500	500**		
Waste Char	5/30/2024	0.2	<0.20	0.87	<0.50	3.3	6.4	<0.50	1.3	4,210	210	3000	1000
FS-01	06/03/2024	1.5	<0.00200	<0.00200	<0.00200	<0.00200	<0.00200	<0.00200	<0.002	<125.2	<0.200	<25.0	<100
FS-02	06/03/2024	1.5	<0.00200	<0.00200	<0.00200	<0.00200	<0.00200	<0.00200	<0.002	<125.2	<0.200	<25.0	<100
FS-03	06/03/2024	1.5	<0.00200	<0.00200	<0.00200	<0.00200	<0.00200	<0.00200	<0.002	<125.2	<0.200	<25.0	<100
FS-04	06/03/2024	1	<0.00200	<0.00200	<0.00200	<0.00200	<0.00200	<0.00200	<0.002	<125.2	<0.200	<25.0	<100
FS-05	06/03/2024	0.5	<0.00200	<0.00200	<0.00200	<0.00200	<0.00200	<0.00200	<0.002	<125.2	<0.200	<25.0	<100
FS-06	06/03/2024	0.5	<0.00200	<0.00200	<0.00200	<0.00200	<0.00200	<0.00200	<0.002	<125.2	<0.200	<25.0	<100
FS-07	06/03/2024	0.5	<0.00200	<0.00200	<0.00200	<0.00200	<0.00200	<0.00200	<0.002	<125.2	<0.200	<25.0	<100
FS-08	06/03/2024	0.5	<0.00200	<0.00200	<0.00200	<0.00200	<0.00200	<0.00200	<0.002	<125.2	<0.200	<25.0	<100
FS-09	06/03/2024	0.5	<0.00200	<0.00200	<0.00200	<0.00200	<0.00200	<0.00200	<0.002	<125.2	<0.200	<25.0	<100
SS-01	06/03/2024	1	<0.00200	<0.00200	<0.00200	<0.00200	<0.00200	<0.00200	<0.002	<125.2	<0.200	<25.0	<100
SS-02	06/03/2024	1	<0.00200	<0.00200	<0.00200	<0.00200	<0.00200	<0.00200	<0.002	<125.2	<0.200	<25.0	<100
FS-02(2)	11/25/2024	2	<0.0020	<0.0050	<0.0050	<0.010	<0.0050	<0.0050	<0.0038	<100.5	<0.50	<50	<50
FS02(3)	1/29/2025	2	<0.0020	<0.0050	<0.0050	<0.010	<0.0050	<0.0050	<0.0038	<100.5	<0.50	<50	<50
BG-E 1 FT	03/13/2025	1	<0.00200	<0.00200	<0.00200	<0.00200	<0.00200	<0.00200	<0.00424	<125.2	<0.200	<25.0	<100
BG-E 2 FT	03/13/2025	2	<0.00200	<0.00200	<0.00200	<0.00200	<0.00200	<0.00200	<0.00411	<125.2	<0.200	<25.0	<100
BG-N 1 FT	03/13/2025	1	<0.00200	<0.00200	<0.00200	<0.00200	<0.00200	<0.00200	<0.00402	<125.2	<0.200	<25.0	<100
BG-N 2 FT	03/13/2025	2	<0.00200	<0.00200	<0.00200	<0.00200	<0.00200	<0.00200	<0.00407	<125.2	<0.200	<25.0	<100
BG-S 1 FT	03/13/2025	1	<0.00200	<0.00200	<0.00200	<0.00200	<0.00200	<0.00200	<0.00390	<125.2	<0.200	<25.0	<100
BG-S 2 FT	03/13/2025	2	<0.00200	<0.00200	<0.00200	<0.00200	<0.00200	<0.00200	<0.00397	<125.2	<0.200	<25.0	<100
BG-W 1 FT	03/13/2025	1	<0.00200	<0.00200	<0.00200	<0.00200	<0.00200	<0.00200	<0.00404	<125.2	<0.200	<25.0	<100
BG-W 2 FT	03/13/2025	2	<0.00200	<0.00200	<0.00200	<0.00200	<0.00200	<0.00200	<0.00410	<125.2	<0.200	<25.0	<100
FS-01 2 FT	03/13/2025	2	<0.00200	<0.00200	<0.00200	<0.00200	<0.00200	<0.00200	<0.00353	<125.2	<0.200	<25.0	<100
FS-07 2 FT	03/13/2025	2	<0.00200	<0.00200	<0.00200	<0.00200	<0.00200	<0.00200	<0.00386	<125.2	<0.200	<25.0	<100
FS-08 2 FT	03/13/2025	2	<0.00200	<0.00200	<0.00200	<0.00200	<0.00200	<0.00200	<0.00410	<125.2	<0.200	<25.0	<100

1. Bold values exceed the ECMC Table 915-1 limit(s)
2. Red & blue highlighted soil analytical values indicate an exceedance of the referenced soil screening level (SSL)
3. * Indicates laboratory minimum detection limit in excess of SSL
4. ** Summation of GRO+DRO+ORO must be less than 500 mg/kg
Purple font indicates samples were analyzed outside of their required hold times; these data were not utilized for compliance purposes
= Source material characterization sample, excavated and transported off site for disposal.
= Material excavated and transported off site for disposal.

TABLE 2
SUMMARY OF POLYCYCLIC AROMATIC HYDROCARBON SOIL CHEMISTRY DATA
PDC 69175
GUS LD PAD, ADAMS COUNTY, COLORADO
REM # 36714

Sample ID	Sample Date	Depth (ft)	Acenaphthene (mg/kg)	Anthracene (mg/kg)	Benzo (a) Anthracene (mg/kg)	Benzo (a) Pyrene (mg/kg)	Benzo (b) Fluoranthene (mg/kg)	Benzo (k) Fluoranthene (mg/kg)	Chrysene (mg/kg)	Dibenzo (a,h) Anthracene (mg/kg)	Fluoranthene (mg/kg)	Fluorene (mg/kg)	Indeno (1,2,3-cd) Pyrene (mg/kg)	Pyrene (mg/kg)	1-Methyl - Naphthalene (mg/kg)	2-Methyl- Naphthalene (mg/kg)
ECMC Table 915-1 Limits (Residential SSL)			360	1800	1.1	0.11	1.1	11	110	0.11	240	240	1.1	180	18	24
ECMC Table 915-1 Limits (Protection of Groundwater SSL)			0.55	5.8	0.011	0.24	0.3	2.9	9	0.096	8.9	0.54	0.98	1.3	0.006	0.019
Waste Char	5/30/2024	0.2	<0.020	<0.020	<0.005	<0.020	<0.020	<0.020	<0.020	<0.020	<0.020	<0.020	<0.020	<0.020	<0.002	<0.002
FS-01	06/03/2024	1.5	<0.020	<0.020	<0.005	<0.020	<0.020	<0.020	<0.020	<0.020	<0.020	<0.020	<0.020	<0.020	<0.002	<0.002
FS-02	06/03/2024	1.5	<0.020	<0.020	<0.005	<0.020	<0.020	<0.020	<0.020	<0.020	<0.020	<0.020	<0.020	<0.020	<0.002	<0.002
FS-03	06/03/2024	1.5	<0.020	<0.020	<0.005	<0.020	<0.020	<0.020	<0.020	<0.020	<0.020	<0.020	<0.020	<0.020	<0.002	<0.002
FS-04	06/03/2024	1	<0.020	<0.020	<0.005	<0.020	<0.020	<0.020	<0.020	<0.020	<0.020	<0.020	<0.020	<0.020	<0.002	<0.002
FS-05	06/03/2024	0.5	<0.020	<0.020	<0.005	<0.020	<0.020	<0.020	<0.020	<0.020	<0.020	<0.020	<0.020	<0.020	<0.002	<0.002
FS-06	06/03/2024	0.5	<0.020	<0.020	<0.005	<0.020	<0.020	<0.020	<0.020	<0.020	<0.020	<0.020	<0.020	<0.020	<0.002	<0.002
FS-07	06/03/2024	0.5	<0.020	<0.020	<0.005	<0.020	<0.020	<0.020	<0.020	<0.020	<0.020	<0.020	<0.020	<0.020	<0.002	<0.002
FS-08	06/03/2024	0.5	<0.020	<0.020	<0.005	<0.020	<0.020	<0.020	<0.020	<0.020	<0.020	<0.020	<0.020	<0.020	<0.002	<0.002
FS-09	06/03/2024	0.5	<0.020	<0.020	<0.005	<0.020	<0.020	<0.020	<0.020	<0.020	<0.020	<0.020	<0.020	<0.020	<0.002	<0.002
SS-01	06/03/2024	1	<0.020	<0.020	<0.005	<0.020	<0.020	<0.020	<0.020	<0.020	<0.020	<0.020	<0.020	<0.020	<0.002	<0.002
SS-02	06/03/2024	1	<0.020	<0.020	<0.005	<0.020	<0.020	<0.020	<0.020	<0.020	<0.020	<0.020	<0.020	<0.020	<0.002	<0.002
FS-02(2)	11/25/2004	2	<0.00500	<0.00500	<0.00500	<0.00500	<0.00500	<0.00500	<0.00500	<0.00500	<0.00500	<0.00500	<0.00500	<0.00500	<0.00500	<0.00500
FS02(3)	1/29/2025	2	<0.00500	<0.00500	<0.00500	<0.00500	<0.00500	<0.00500	<0.00500	<0.00500	<0.00500	<0.00500	<0.00500	<0.00500	<0.00500	<0.00500
BG-E 1 FT	03/13/2025	1	<0.00424	<0.00424	<0.00424	<0.00424	<0.00424	<0.00424	<0.00424	<0.00424	<0.00424	<0.00424	<0.00424	<0.00424	<0.00424	<0.00424
BG-E 2 FT	03/13/2025	2	<0.00411	<0.00411	<0.00411	<0.00411	<0.00411	<0.00411	<0.00411	<0.00411	<0.00411	<0.00411	<0.00411	<0.00411	<0.00411	<0.00411
BG-N 1 FT	03/13/2025	1	<0.00402	<0.00402	<0.00402	<0.00402	<0.00402	<0.00402	<0.00402	<0.00402	<0.00402	<0.00402	<0.00402	<0.00402	<0.00402	<0.00402
BG-N 2 FT	03/13/2025	2	<0.00407	<0.00407	<0.00407	<0.00407	<0.00407	<0.00407	<0.00407	<0.00407	<0.00407	<0.00407	<0.00407	<0.00407	<0.00407	<0.00407
BG-S 1 FT	03/13/2025	1	<0.00390	<0.00390	<0.00390	<0.00390	<0.00390	<0.00390	<0.00390	<0.00390	<0.00390	<0.00390	<0.00390	<0.00390	<0.00390	<0.00390
BG-S 2 FT	03/13/2025	2	<0.00397	<0.00397	<0.00397	<0.00397	<0.00397	<0.00397	<0.00397	<0.00397	<0.00397	<0.00397	<0.00397	<0.00397	<0.00397	<0.00397
BG-W 1 FT	03/13/2025	1	<0.00404	<0.00404	<0.00404	<0.00404	<0.00404	<0.00404	<0.00404	<0.00404	<0.00404	<0.00404	<0.00404	<0.00404	<0.00404	<0.00404
BG-W 2 FT	03/13/2025	2	<0.00410	<0.00410	<0.00410	<0.00410	<0.00410	<0.00410	<0.00410	<0.00410	<0.00410	<0.00410	<0.00410	<0.00410	<0.00410	<0.00410
FS-01 2 FT	03/13/2025	2	<0.00353	<0.00353	<0.00353	<0.00353	<0.00353	<0.00353	<0.00353	<0.00353	<0.00353	<0.00353	<0.00353	<0.00353	<0.00353	<0.00353
FS-07 2 FT	03/13/2025	2	<0.00386	<0.00386	<0.00386	<0.00386	<0.00386	<0.00386	<0.00386	<0.00386	<0.00386	<0.00386	<0.00386	<0.00386	<0.00386	<0.00386
FS-08 2 FT	03/13/2025	2	<0.00410	<0.00410	<0.00410	<0.00410	<0.00410	<0.00410	<0.00410	<0.00410	<0.00410	<0.00410	<0.00410	<0.00410	<0.00410	<0.00410

1. Bold values exceed the ECMC Table 915-1 limit(s)

2. Red & blue highlighted soil analytical values indicate an exceedance of the referenced soil screening level (SSL)

3. * Indicates laboratory minimum detection limit in excess of SSL

Purple font indicates samples were analyzed outside of their required hold times; these data were not utilized for compliance purposes

 = Source material characterization sample, excavated and transported off site for disposal.

 = Material excavated and transported off site for disposal.

TABLE 3
SUMMARY OF SOIL SUITABILITY FOR RECLAMATION
PDC 69175
GUS LD PAD, ADAMS COUNTY, COLORADO
REM # 36714


Sample ID	Sample Date	Depth (ft)	pH (Standard Units)	EC (mmhos/cm)	SAR (Standard Units)	Boron (mg/L)
ECMC Table 915-1 Soil Suitability Limits			6 - 8.3	<4	<6	2
Waste Char	5/30/2024	0.2	8.27	8.36	37.5	6.59
FS-01	06/03/2024	1.5	8.09	4.72	28.7	<0.0983
FS-02	06/03/2024	1.5	8.08	5.82	26.0	<0.101
FS-03	06/03/2024	1.5	8.19	3.69	12.7	0.212
FS-04	06/03/2024	1	8.34	2.22	7.91	0.247
FS-05	06/03/2024	0.5	8.51	2.04	14.7	0.279
FS-06	06/03/2024	0.5	8.19	2.65	3.38	0.391
FS-07	06/03/2024	0.5	8.26	4.90	14.0	0.815
FS-08	06/03/2024	0.5	7.96	11.30	15.0	1.47
FS-09	06/03/2024	0.5	8.40	2.43	10.5	0.413
SS-01	06/03/2024	1	8.06	8.65	22.7	3.71
SS-02	06/03/2024	1	8.26	2.30	14.6	<0.0996
BG-NE-IN	8/22/2024	1	9.23	1.07	5.89	<2.00
BG-SE-IN	8/22/2024	1	8.84	1.02	11.0	<2.00
BG-SE-OFF	8/22/2024	1	8.34	0.15	0.266	<2.00
BG-S-C	8/22/2024	1	7.68	2.78	0.199	<2.00
BG-S-W	8/22/2024	1	7.16	1.04	0.22	<2.00
BG-NE-ON 2 Ft	11/8/2024	2	9.19	1.03	7.06	<2.00
BG-NW-ON 2 Ft	11/8/2024	2	8.31	1.65	10.1	<2.00
BG-NN-ON 2 Ft	11/8/2024	2	9.03	1.26	17.4	<2.00
BG-SE-ON 1 Ft	11/8/2024	1	9.31	2.00	12.0	<2.00
BG-SW-ON 1 Ft	11/8/2024	1	9.39	1.01	8.32	<2.00
SS-01(2) 1 Ft	11/8/2024	1	8.82	0.68	2.65	<2.00
SS-01(2) 2 Ft (vertical delineation pt for SS-01)	11/8/2024	2	9.10	0.63	5.26	<2.00
FS-02(2) (vertical delineation pt for FS-02)	11/25/2024	2	8.04	1.33	4.44	<2.00
FS02(3)	1/29/2025	2	8.36	1.33	6.52	<2.00
BG-E 1 FT (horiz delineation pt)	03/13/2025	1	7.93	11.7	5.71	0.131
BG-E 2 FT	03/13/2025	2	8.1	17.1	7.10	0.114
BG-N 1 FT (horiz delineation pt)	03/13/2025	1	8.19	20.0	8.32	<0.0989
BG-N 2 FT	03/13/2025	2	8.06	27.9	4.22	<0.101
BG-S 1 FT (horiz delineation pt)	03/13/2025	1	8.64	27.0	2.76	0.264


Sample ID	Sample Date	Depth (ft)	pH (Standard Units)	EC (mmhos/cm)	SAR (Standard Units)	Boron (mg/L)
ECMC Table 915-1 Soil Suitability Limits			6 - 8.3	<4	<6	2
BG-S 2 FT	03/13/2025	2	8.36	14.6	5.51	0.261
BG-W 1 FT (horiz delineation pt)	03/13/2025	1	8.19	27.4	3.79	0.121
BG-W 2 FT	03/13/2025	2	7.98	30.8	4.07	<0.100
FS-01 2 FT (vertical delineation pt for FS-01)	03/13/2025	2	7.94	6.40	4.84	<0.0983
FS-07 2 FT	03/13/2025	2	8.09	17.1	7.55	0.401
FS-08 2 FT	03/13/2025	2	8.11	13.5	5.86	0.370
Analysis Overview: Resolved, Not Resolved or Delineated			Resolved BG	Resolved BG	Delineated	Resolved
Maximum Background Concentration			9.39	30.8	17.4	<2.00

1. Bold faced values exceed the ECMC Table 915-1 limit(s)

2. Blue highlighted soil analytical values indicate a regulatory exceedance

Purple font indicates samples were analyzed outside of their required hold times; these data were not utilized for compliance purposes

 = Source material characterization sample, excavated and transported off site for disposal.

 = Material excavated and transported off site for disposal.

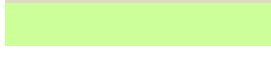
 = Boron resolved via confirmation samples SS-01(2) 1 Ft and SS-01(2) 2 Ft and approved in Doc # 403996864 and 404091668.

TABLE 4
SUMMARY OF METALS IN SOIL CHEMISTRY DATA
PDC 69175
GUS LD PAD, ADAMS COUNTY, COLORADO
REM # 36714

Sample ID	Sample Date	Depth (ft)	Arsenic (mg/kg)	Barium (mg/kg)	Cadmium (mg/kg)	Chromium (VI) (mg/kg)	Copper (mg/kg)	Lead (mg/kg)	Nickel (mg/kg)	Selenium (mg/kg)	Silver (mg/kg)	Zinc (mg/kg)
ECMC Table 915-1 Limits (Residential SSL)			0.68	15000	71	0.3	3100	400	1500	390	390	23000
ECMC Table 915-1 Limits (Protection of Groundwater SSL)			0.29	82	0.38	0.00067	46	14	26	0.26	0.8	370
Waste Char	5/30/2024	0.2	3.28	69.2	<0.200	<0.30	3.91	4.66	3.99	<0.260	<0.0200	14.6
FS-01	06/03/2024	1.5	2.39	27.2	0.211	<0.276	10.5	10.8	9.59	<0.247	<0.0952	<35.2
FS-02	06/03/2024	1.5	4.22	22.4	0.157	<0.374	11.2	10.6	9.28	0.27	<0.0853	40.0
FS-03	06/03/2024	1.5	4.14	52.4	0.311	<0.342	11.2	11.5	13.1	<0.234	<0.0899	42.7
FS-04	06/03/2024	1	5.44	60.7	0.418	<0.368	15.5	27.6	14.1	<0.243	<0.0933	52.7
FS-05	06/03/2024	0.5	3.16	171	0.132	0.568	<9.11	7.17	7.46	<0.237	<0.0911	33.7
FS-06	06/03/2024	0.5	3.31	101	0.125	<0.296	<9.74	7.19	7.48	<0.253	<0.0974	<36.0
FS-07	06/03/2024	0.5	3.26	164	0.117	<0.265	10.7	7.16	7.54	<0.241	<0.0928	34.8
FS-08	06/03/2024	0.5	2.68	60.6	0.0901	<0.282	<8.58	5.58	6.61	<0.223	<0.0858	<31.7
FS-09	06/03/2024	0.5	2.94	149	0.101	<0.354	<9.38	6.41	7.11	<0.244	<0.0938	<34.7
SS-01	06/03/2024	1	3.81	127	0.127	<0.348	9.53	8.06	8.45	<0.243	<0.0935	35.1
SS-02	06/03/2024	1	2.79	25.3	0.173	<0.296	12.1	13.9	8.84	<0.253	<0.0974	37.1
BG-NE-IN	8/22/2024	1	3.91	116	0.400	<0.30	6.3	7.57	6.04	<0.260	0.0391	22.1
BG-SE-IN	8/22/2024	1	1.92	45.5	<0.200	<0.30	4.06	3.73	3.86	<0.260	0.0443	12.5
BG-SE-OFF	8/22/2024	1	7.30	47.1	0.24	<0.30	5.65	7.87	5.89	<0.234	0.0246	19.8
BG-S-C	8/22/2024	1	4.08	9.23	<0.200	<0.30	6.37	12.3	3.21	<0.260	0.0211	17.7
BG-S-W	8/22/2024	1	1.08	6.26	<0.200	<0.30	6.46	9.54	3.29	<0.260	0.0333	10.8
BG-NE-ON 2 Ft	11/8/2024	2	6.12	12.3	<0.200	<0.30	8.08	11.7	4.54	<0.260	0.0221	16.7
BG-NW-ON 2 Ft	11/8/2024	2	4.68	9.42	<0.200	<0.30	5.16	5.78	5.48	<0.260	<0.0200	17
BG-NN-ON 2 Ft	11/8/2024	2	3.98	62.9	0.406	<0.30	9.39	15.0	7.51	0.396	0.0397	28.9
BG-SE-ON 1 Ft	11/8/2024	1	5.12	70.4	0.362	<0.30	19.5	11.2	7.19	0.274	0.0356	27.3
BG-SW-ON 1 Ft	11/8/2024	1	2.62	61.2	<0.200	<0.30	5.54	5.05	5.07	<0.260	0.0223	16.6
SS-01(2) 1 Ft	11/8/2024	1	2.59	167	0.212	<0.30	5.91	6.58	4.7	<0.260	0.0486	19.8
SS-01(2) 2 Ft	11/8/2024	2	3.17	61.1	0.422	<0.30	8.3	11.3	7.85	<0.260	0.0339	27.4
FS-02(2)	11/25/2024	2	1.07	48.4	<0.200	<0.30	3.95	10.2	3.29	<0.260	0.0277	11.8
FS02(3)	1/29/2025	2	3.30	19.8	0.338	<0.30	9.59	13.3	5.68	<0.260	0.032	21.9
BG-E 1 FT	03/13/2025	1	5.30	71.3	0.383	<0.282	17.4	15.8	22.3	0.233	<0.0880	54.9
BG-E 2 FT	03/13/2025	2	5.63	46.3	0.262	<0.360	18.3	15.4	16.2	0.28	<0.0908	57.9
BG-N 1 FT	03/13/2025	1	4.62	163	0.618	<0.242	17	17.9	22.1	<0.232	<0.0892	50.8
BG-N 2 FT	03/13/2025	2	12.5	33.5	0.229	<0.291	22.1	19.5	15.9	0.296	<0.0929	79.1

Sample ID	Sample Date	Depth (ft)	Arsenic (mg/kg)	Barium (mg/kg)	Cadmium (mg/kg)	Chromium (VI) (mg/kg)	Copper (mg/kg)	Lead (mg/kg)	Nickel (mg/kg)	Selenium (mg/kg)	Silver (mg/kg)	Zinc (mg/kg)
ECMC Table 915-1 Limits (Residential SSL)			0.68	15000	71	0.3	3100	400	1500	390	390	23000
ECMC Table 915-1 Limits (Protection of Groundwater SSL)			0.29	82	0.38	0.00067	46	14	26	0.26	0.8	370
BG-S 1 FT	03/13/2025	1	2.68	31.6	0.205	<0.316	14.2	12.2	11.8	0.299	<0.0886	55.4
BG-S 2 FT	03/13/2025	2	3.17	121	0.126	<0.330	9.92	7.26	7.93	<0.254	<0.0977	<36.1
BG-W 1 FT	03/13/2025	1	2.24	187	0.713	<0.265	15.3	16.8	27.3	0.288	<0.0923	39.6
BG-W 2 FT	03/13/2025	2	2.54	80	0.196	<0.385	14.7	12.9	12.3	<0.243	<0.0935	58.6
FS-01 2 FT	03/13/2025	2	1.82	64.5	<0.0866	<0.309	<8.66	5.68	5.28	<0.225	<0.0866	<32.0
FS-07 2 FT	03/13/2025	2	6.03	36.5	0.259	<0.469	16.7	14.6	15.3	0.297	<0.0840	55.7
FS-08 2 FT	03/13/2025	2	4.10	42.7	0.236	<0.294	15.1	14.6	11.7	0.241	<0.0855	49.4
Analysis: Resolved or Not Resolved			Resolved BG	Resolved PW	Resolved BG	Resolved PW	Resolved	Resolved PW	Resolved	Resolved BG	Resolved	Resolved
Maximum Background Concentration			12.50	187	0.406	<0.30	6.46	19.5	6.04	0.396	0.0443	22.1
125% of Maximum Background Concentration			15.63	234	0.508	0.38	8.08	24.38	7.55	0.495	0.0554	27.6

1. Bold values exceed the ECMC Table 915-1 limit(s)

2. Red & blue highlighted soil analytical values indicate an exceedance of the referenced soil screening level (SSL)

* Indicates laboratory minimum detection limit in excess of SSL

Purple font indicates samples were analyzed outside of their required hold times; these data were not utilized for compliance purposes

 = Source material characterization sample, excavated and transported off site for disposal.

 = Material excavated and transported off site for disposal.

TABLE 5
SUMMARY OF BARIUM (Ba) CONCENTRATIONS IN EXCAVATED SOILS CALCULATION (BASED ON REPORTED SPILL VOLUME)
PDC ENERGY INC.
GUS LD PAD
FREMONT PROJECT NO. C024-122

Compare Mass of Barium (Ba) Excavated to Barium Released

Barium Removed During Excavation	2,429.05 grams
Barium Released Due to Spill	4.120 grams
Excess Barium Removed During Excavation	2,424.93 grams

Therefore, approximately 589 times more barium were removed via excavation than were released

Calculation of Barium Removed During Excavation

Avg. Ba Concentration in Excav. Soil Samples	Mass of Excavated Soil	Mass of Ba in Exc. Soil
85.82 mg/kg	28,304 kg	2,429.05 grams

Mass of excavated soil is: 24 cubic yards x 1.30 ton/CY = 31.2 tons = 28,304 kg

Twelve soil samples from the excavation were analyzed for barium; the average concentration was 85.82 mg/kg

Calculation of Barium Released Due to Spill

Produced H2O/Oil Release Volume (bbl)	Produced H2O/Oil Volume (L)	Ba Concentration (ug/L)	Ba Mass Released (mg)	Ba Mass Released (g)
0.53	84.26	48900	(48900 ug/L x 84.26 L)/1000 4120.466	4.120

Net Volume of Produced Water Released: (.53 bbl)(158.987 L/bbl) = 84.26 L

1 kg/L is weight of water

Barium concentration in produced fluid sample was 48,900 ug/L (see lab report)

TABLE 6
SUMMARY OF HEXAVALENT CHROMIUM (Cr) CONCENTRATIONS IN EXCAVATED SOILS CALCULATION (BASED ON REPORTED SPILL VOLUME)
PDC ENERGY INC.
GUS LD PAD
FREMONT PROJECT NO. C024-122

Compare Mass of Chromium (Cr) Excavated to Chromium Released

Chromium Removed During Excavation	9.595 grams
Chromium Released Due to Spill	0.000843 grams
Excess Chromium Removed During Excavation	9.594 grams

Therefore, approximately 11,382 times more Chromium were removed via excavation than were released

Calculation of Chromium Removed During Excavation

Avg. Cr Concentration in Excav. Soil Samples	Mass of Excavated Soil	Mass of Cr in Exc. Soil
0.339 mg/kg	28,304 kg	9.595 grams

Mass of excavated soil is: 24 cubic yards x 1.30 ton/CY = 31.2 tons = 28,304 kg

Twelve soil samples from the excavation were analyzed for Chromium; the average concentration was 0.339 mg/kg

Calculation of Chromium Released Due to Spill

Produced H2O/Oil Release Volume (bbl)	Produced H2O/Oil Volume (L)	Cr Concentration (ug/L)	Cr Mass Released (mg)	Cr Mass Released (g)
0.53	84.26	10	(10 ug/L x 84.26 L)/1000 0.843	0.000843

Net Volume of Produced Water Released: (.53 bbl)(158.987 L/bbl) = 84.26 L

1 kg/L is weight of water

Chromium concentration in produced fluids sample was less than the laboratory detection limit of 10 ug/L; therefore, use 10 ug/L

TABLE 7
SUMMARY OF LEAD (Pb) CONCENTRATIONS IN EXCAVATED SOILS CALCULATION (BASED ON REPORTED SPILL VOLUME)
PDC ENERGY INC.
GUS LD PAD
FREMONT PROJECT NO. C024-122

Compare Mass of Lead (Pb) Excavated to Lead Released

Lead Removed During Excavation	284.46 grams
Lead Released Due to Spill	0.00005 grams
Excess Lead Removed During Excavation	284.46 grams

Therefore, approximately 5,689,000 times more Lead were removed via excavation than were released

Calculation of Lead Removed During Excavation

Avg. Pb Concentration in Excav. Soil Samples	Mass of Excavated Soil	Mass of Pb in Exc. Soil
10.05 mg/kg	28,304 kg	284.46 grams

Mass of excavated soil is: 24 cubic yards x 1.30 ton/CY = 31.2 tons = 28,304 kg

Twelve soil samples from the excavation were analyzed for Lead; the average concentration was 10.05 mg/kg

Calculation of Lead Released Due to Spill

Produced H2O/Oil Release Volume (bbl)	Produced H2O/Oil Volume (L)	Pb Concentration (ug/L)	Pb Mass Released (mg)	Pb Mass Released (g)
0.53	84.26311	0.54	(0.540 ug/L x 84.26 L)/1000 0.05	0.00005

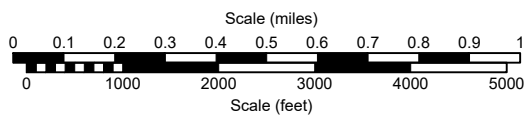
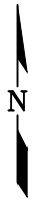
Net Volume of Produced Water Released: (.53 bbl)(158.987 L/bbl) = 84.26 L

1 kg/L is weight of water

Pb concentration in produced fluid sample was 0.540 ug/L (see lab report)

TABLE 8
SUMMARY OF TOTAL RECOVERABLE METALS IN PRODUCED FLUID CHEMISTRY DATA
PDC ENERGY INC.
GUS LD PAD
FREMONT PROJECT NO. C024

Sample ID	Sample Date	Arsenic (ug/L)	Barium (ug/L)	Cadmium (ug/L)	Chromium IV (ug/L)	Copper (ug/L)	Lead (ug/L)	Nickel (ug/L)	Selenium (ug/L)	Silver (ug/L)	Zinc (ug/L)
PW	5/30/2024	<0.600	48900	0.43	<10	5.08	0.54	3.60	<1.00	0.165	122



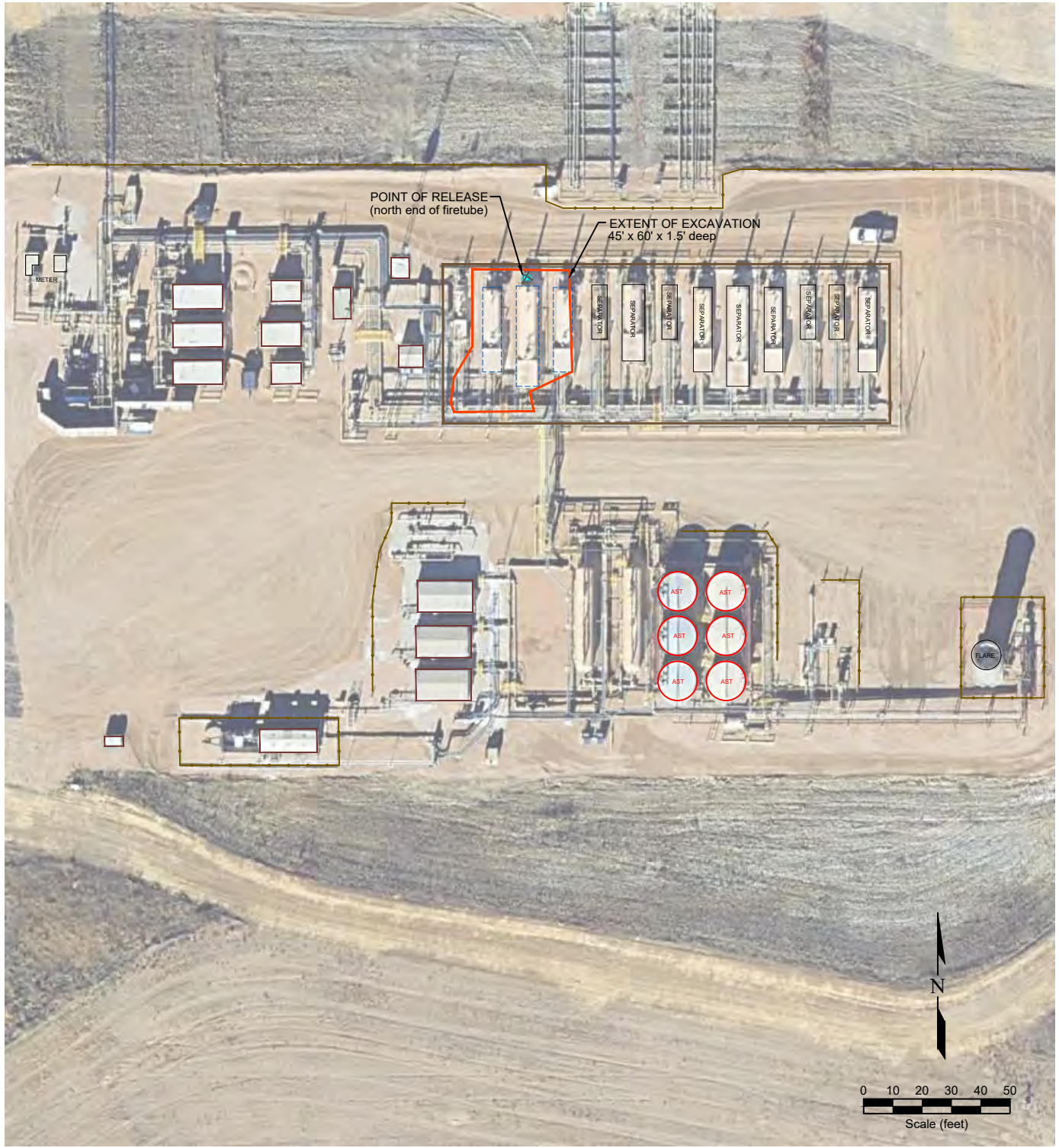
USGS 7.5 MINUTE SERIES (TOPOGRAPHIC)

Figure 1
SITE LOCATION MAP

PDC Energy, Inc. ~ Gus LD Pad
 SENE Sec. 21, T1S, R67W, 6th PM
 Adams County, Colorado
 39.952212°, -104.885496°

Project # C024-122	API #	Facility # 486891
Date 12/4/25	Remediation # 36714	Filename 24122T





LEGEND

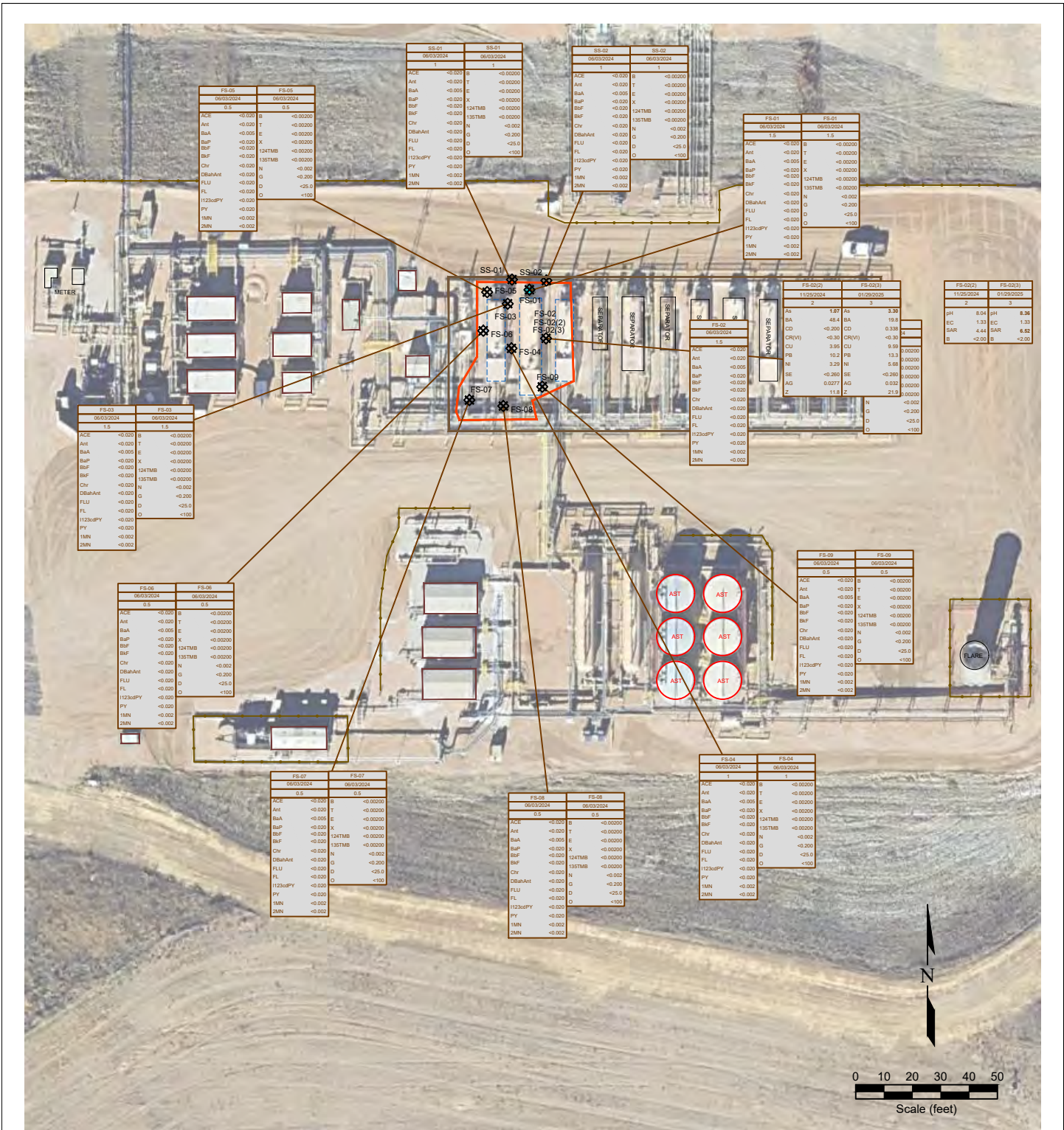
- POINT OF RELEASE
- ABOVE GROUND STORAGE TANK
- FORMER FACILITY
- BUILDING
- EXTENT OF EXCAVATION
- FENCE LINE
- CONTAINMENT BERM
- CONTAINMENT WALL
- SECONDARY CONTAINMENT WALL

**Figure 2
SITE MAP**

PDC Energy, Inc. ~ Gus LD Pad
 SENE Sec. 21, T1S, R67W, 6th PM
 Adams County, Colorado
 39.952212°, -104.885496°

Project No. C024-122	API #	Facility # 486891
Date 12/4/25	Remediation # 36714	Filename 24122Q1





LEGEND

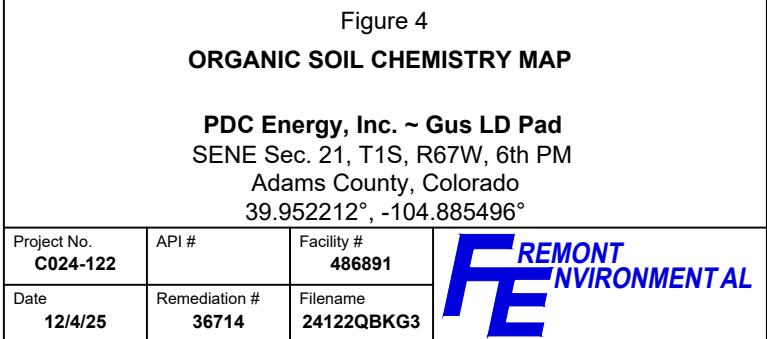
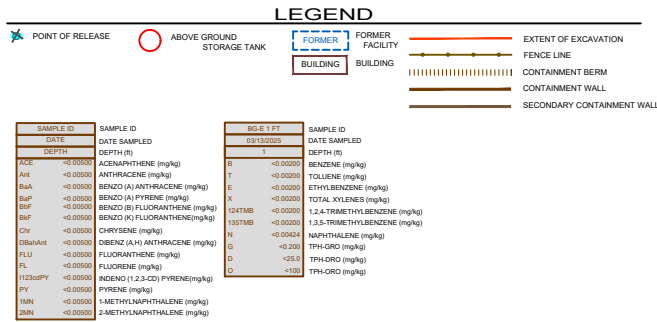
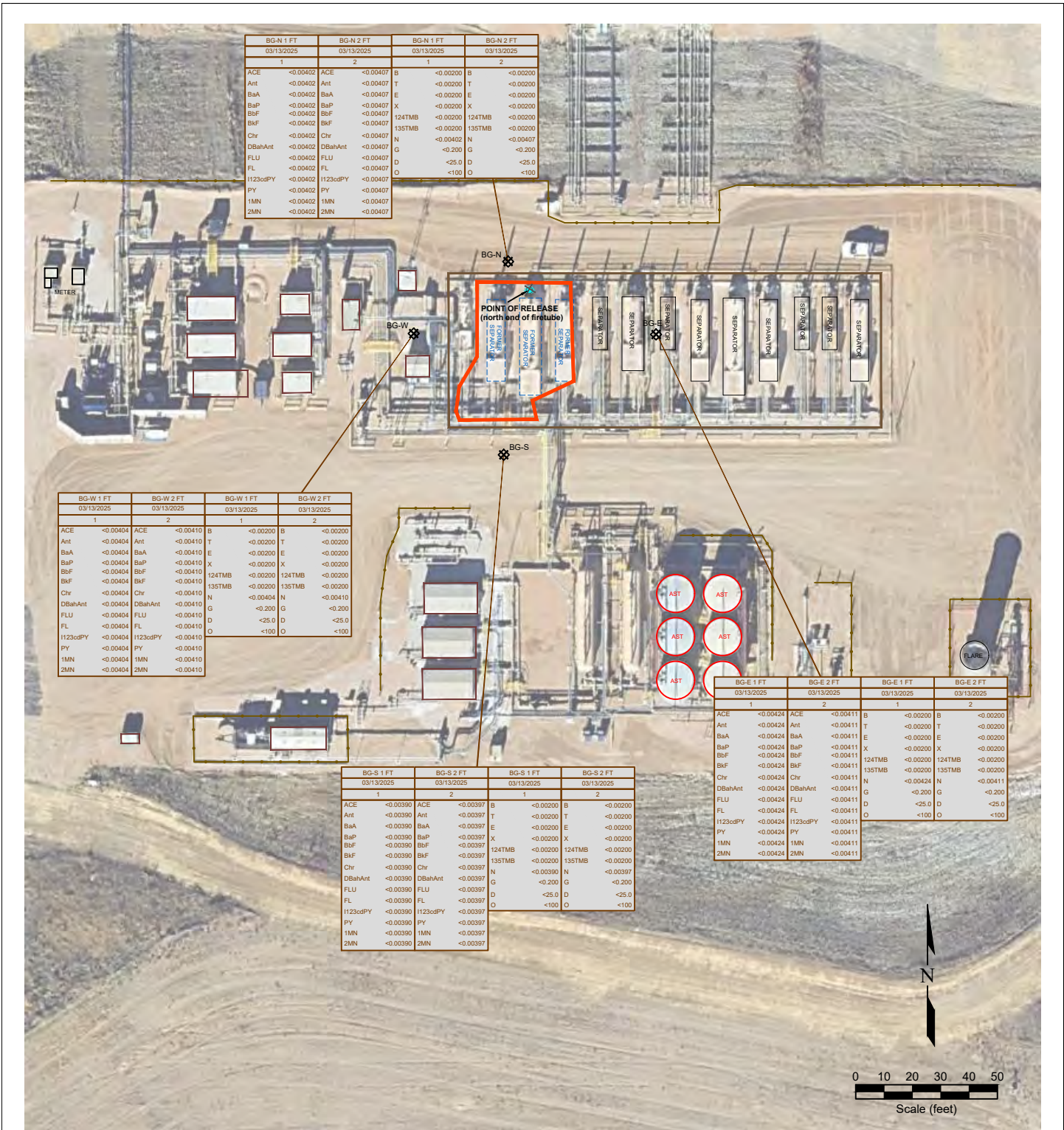
- POINT OF RELEASE
- SOIL SAMPLE LOCATION
- ABOVE GROUND STORAGE TANK
- FORMER FACILITY
- BUILDING
- EXTENT OF EXCAVATION
- FENCE LINE
- CONTAINMENT BERM
- CONTAINMENT WALL
- SECONDARY CONTAINMENT WALL

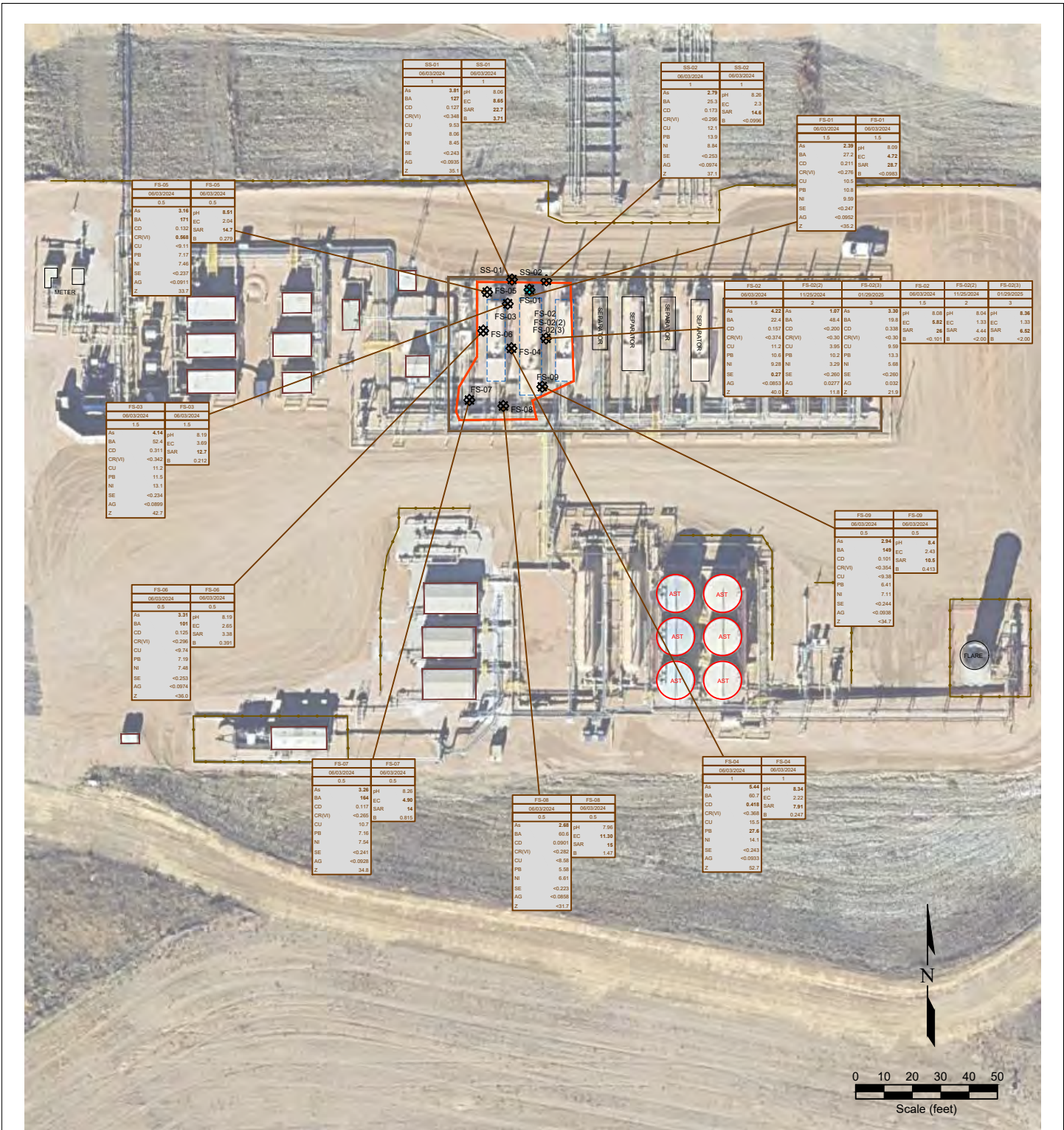
SAMPLE ID	SAMPLE ID	SAMPLE ID	SAMPLE ID
DATE	DATE SAMPLED	DATE	DATE SAMPLED
ACE	<0.0000	B	<0.0000
Ant	<0.0000	T	<0.0000
BaA	<0.0000	E	<0.0000
BaP	<0.0000	X	<0.0000
BbF	<0.0000	124TMB	<0.0000
Chr	<0.0000	135TMB	<0.0000
DBaAnt	<0.0000	N	<0.0000
FLU	<0.0000	G	<0.200
FL	<0.0000	D	<25.0
1123uPPY	<0.0000	O	<100
1MN	<0.0000		
2MN	<0.0000		

Figure 3
ORGANIC SOIL CHEMISTRY MAP

PDC Energy, Inc. ~ Gus LD Pad
 SENE Sec. 21, T1S, R67W, 6th PM
 Adams County, Colorado
 39.952212°, -104.885496°

Project No. C024-122	API #	Facility # 486891
Date 12/4/25	Remediation # 36714	Filename 24122Q1





LEGEND

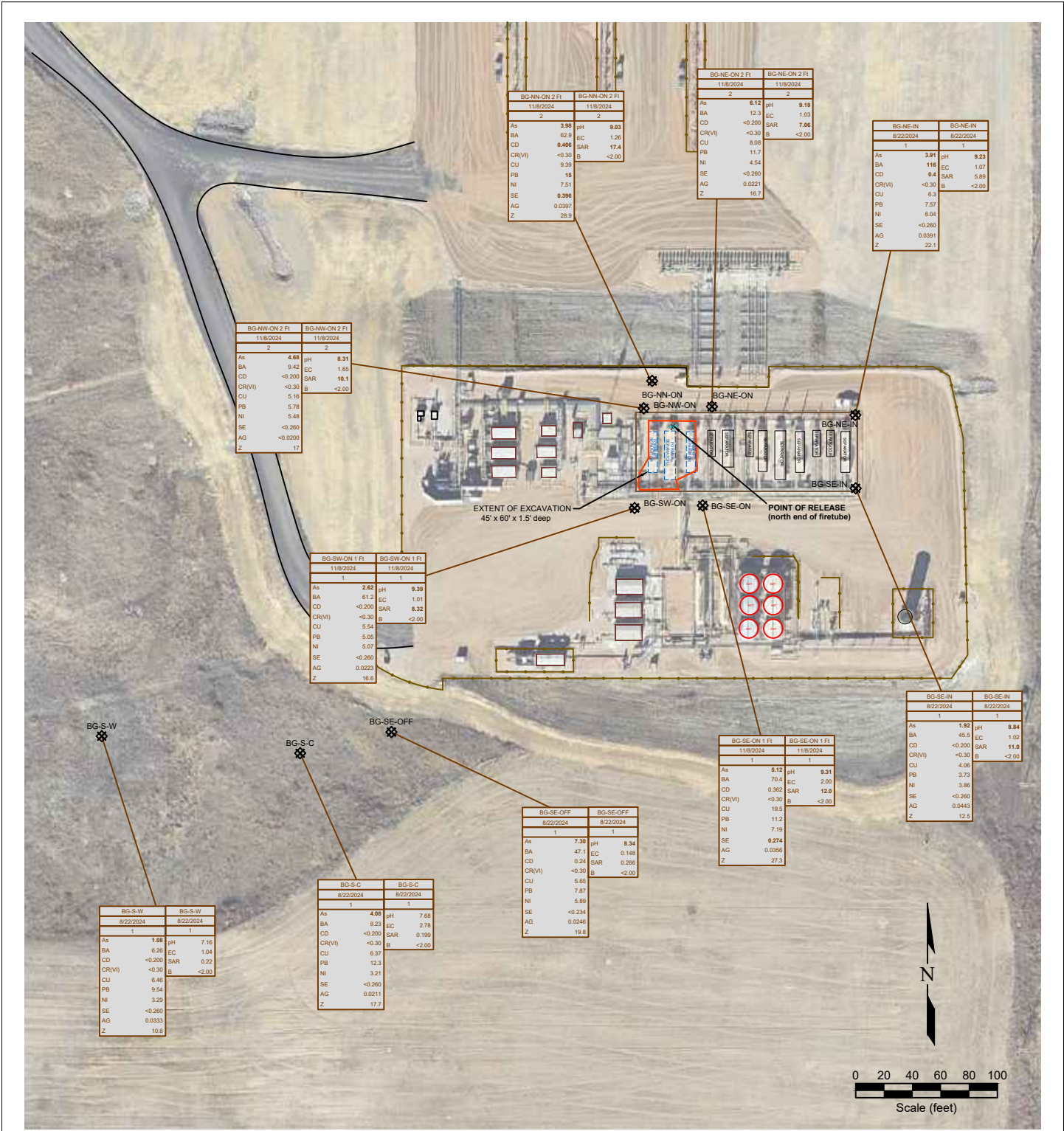
- POINT OF RELEASE
- SOIL SAMPLE LOCATION
- ABOVE GROUND STORAGE TANK
- FORMER FACILITY BUILDING
- EXTENT OF EXCAVATION
- FENCE LINE
- CONTAINMENT BERM
- CONTAINMENT WALL
- SECONDARY CONTAINMENT WALL

SAMPLE DATE	SAMPLE ID	DATE SAMPLED	DEPTH (ft)	AS	BA	CD	CR(VI)	CU	PB	NI	SE	AG	Z
06/03/2024	AS-01	06/03/2024	1	3.81	127	0.127	-0.348	9.63	8.06	8.45	-0.243	-0.0535	35.1

Figure 5
METALS AND INORGANIC SOIL CHEMISTRY MAP

PDC Energy, Inc. ~ Gus LD Pad
 SENE Sec. 21, T1S, R67W, 6th PM
 Adams County, Colorado
 39.952212°, -104.885496°

Project No. C024-122	API #	Facility # 486891
Date 12/4/25	Remediation # 36714	Filename 24122Q1



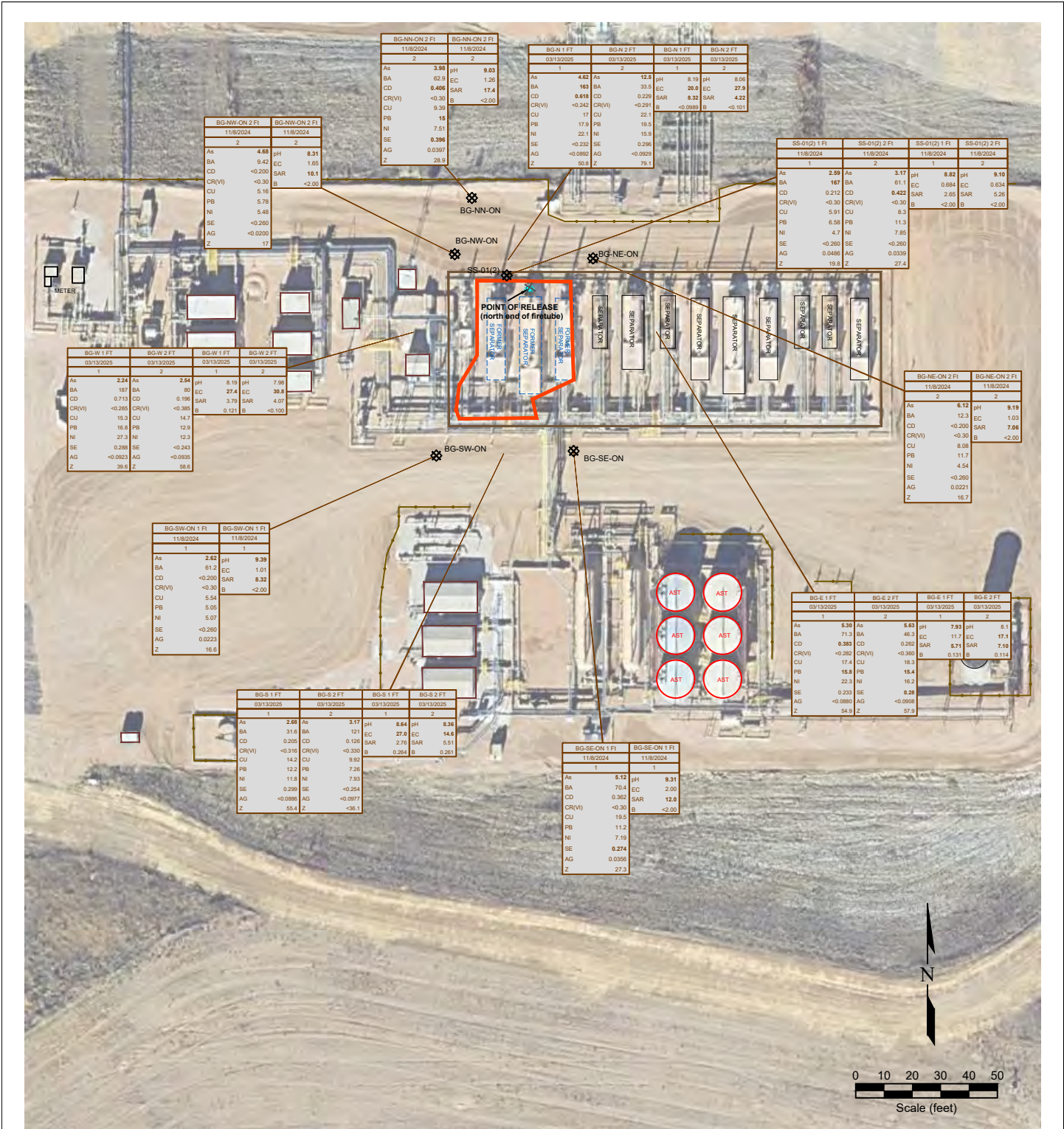
SAMPLE	SAMPLE ID	DATE SAMPLED	DEPTH (ft)	ARSENIC (mg/kg)	PH	DATE SAMPLED	DEPTH (ft)	ARSENIC (mg/kg)	PH
As	1.08	8/22/2024	1	4.09	7.16	8/22/2024	1	4.09	7.68
BA	6.28	8/22/2024	1	9.25	1.04	8/22/2024	1	9.25	2.78
CD	<-0.200	8/22/2024	1	<-0.200	0.22	8/22/2024	1	<-0.200	0.199
CR(VI)	<-0.30	8/22/2024	1	<-0.30	<-2.00	8/22/2024	1	<-0.30	<-2.00
CU	6.46	8/22/2024	1	6.37	12.3	8/22/2024	1	6.37	3.21
PB	9.54	8/22/2024	1	12.3	3.21	8/22/2024	1	12.3	<-0.260
NI	3.29	8/22/2024	1	3.21	0.0211	8/22/2024	1	3.21	17.7
SE	<-0.260	8/22/2024	1	<-0.260		8/22/2024	1	<-0.260	
AG	0.0333	8/22/2024	1	0.0211		8/22/2024	1	0.0211	
Z	10.8	8/22/2024	1	17.7		8/22/2024	1	17.7	

Figure 6
BACKGROUND SAMPLE SOIL CHEMISTRY MAP

PDC Energy, Inc. ~ Gus LD Pad
SENE Sec. 21, T1S, R67W, 6th PM
Adams County, Colorado
39.952212°, -104.885496°

Project No. C024-122	API #	Facility # 486891
Date 12/4/25	Remediation # 36714	Filename 24122QBKG





LEGEND

- POINT OF RELEASE
- SOIL SAMPLE LOCATION
- ABOVE GROUND STORAGE TANK
- FORMER FACILITY
- FORMER BUILDING
- EXTENT OF EXCAVATION
- FENCE LINE
- CONTAINMENT BERM
- CONTAINMENT WALL
- SECONDARY CONTAINMENT WALL

SAMPLE DATE	SAMPLE ID	DATE SAMPLED	DEPTH (ft)	ARSENIC (mg/kg)	BARIUM (mg/kg)	CADMIUM (mg/kg)	CHROMIUM (mg/kg)	COPPER (mg/kg)	LEAD (mg/kg)	NICKEL (mg/kg)	SELENIUM (mg/kg)	SILVER (mg/kg)	ZINC (mg/kg)
03/13/2025	As	11/8/2024	1	2.54	107	0.713	15.3	16.8	27.3	0.288	-0.0923	39.6	58.6
03/13/2025	As	11/8/2024	2	2.54	80	0.196	14.7	12.9	12.3	<0.243	-0.0935		

Figure 7
BACKGROUND SAMPLE SOIL CHEMISTRY MAP

PDC Energy, Inc. ~ Gus LD Pad
 SENE Sec. 21, T1S, R67W, 6th PM
 Adams County, Colorado
 39.952212°, -104.885496°

Project No. C024-122	API #	Facility # 486891
Date 12/4/25	Remediation # 36714	Filename 24122QBKG3

