

DATE:	October 2025
DESIGNED BY:	B. Nelson
DRAWN BY:	L. Reed



Tasman, Inc.
4725 Independence St.
Wheat Ridge, CO 80033

PDC Energy, Inc - 69175 - DJ Basin
Cornish 17-11 Flowline
 NWNW, Section 17, Township 6 North, Range 63 West
 Weld County, Colorado

Site Location Map

Figure
1



DATE: September 18, 2025

DESIGNED BY: J. Whritenour

DRAWN BY: L. Reed



Tasman, Inc.
 4725 Independence Street
 Wheat Ridge, CO 80033

**PDC Energy, Inc – 69175
 Cornish 17-11 Flowline**
 NWNW, Section 17, Township 6 North, Range 63 West
 Weld County, Colorado

SOIL SAMPLE
 LOCATION MAP
 (FLOWLINE)

FIGURE
 2



DATE: December 3, 2025

DESIGNED BY: J. Whritenour

DRAWN BY: B. Wagner



**PDC Energy, Inc – 69175
 Cornish 17-11 Flowline**
 NWNW, Section 17, Township 6 North, Range 63 West
 Weld County, Colorado

PROPOSED SOIL BORING
 LOCATION MAP

FIGURE
 3

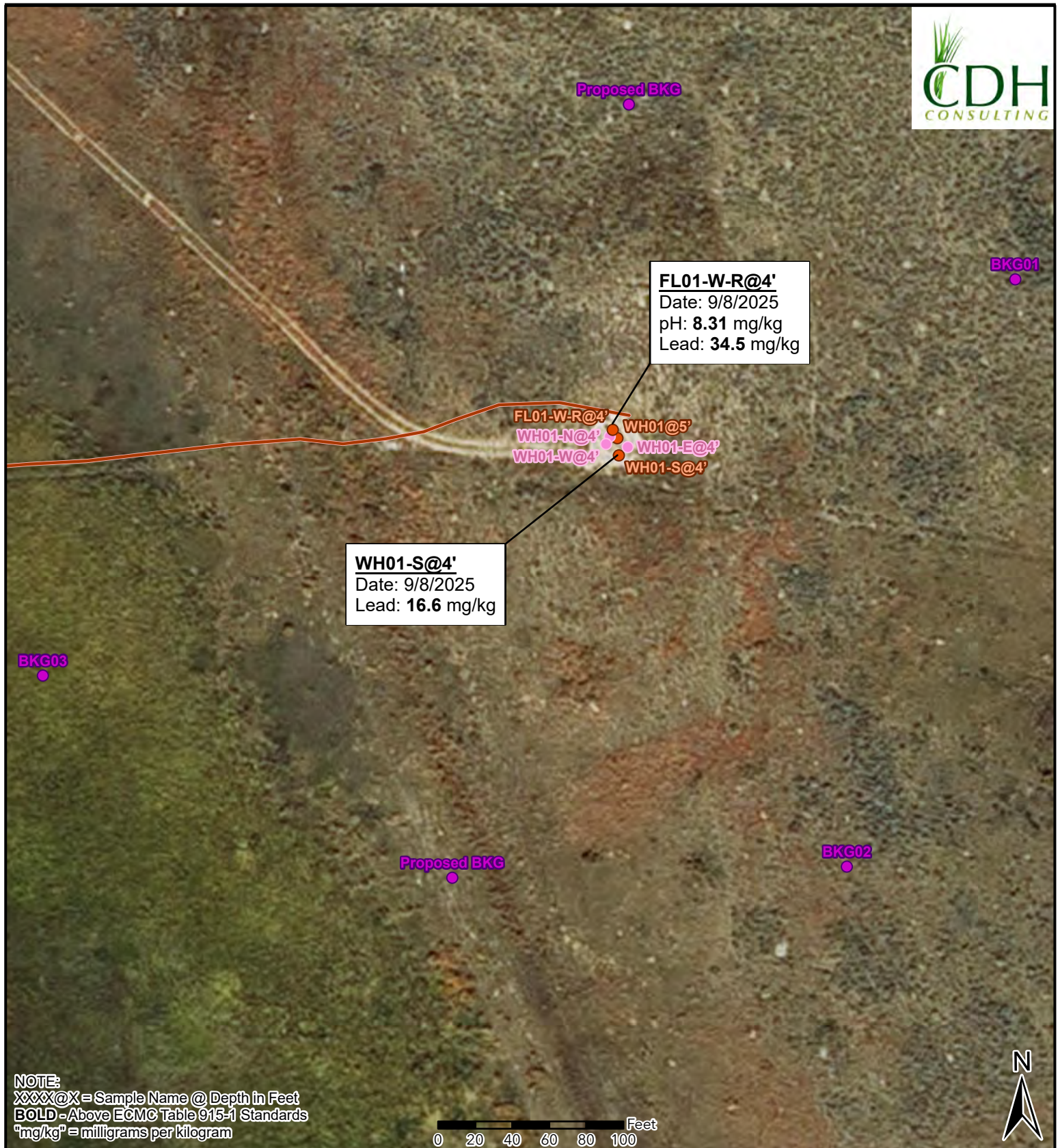


Figure 4
Sample Locations Map
CORNISH 17-11
NWNW-SEC 17-T6N-R63W
Weld County, Colorado
PDC Energy Inc

- Soil Sample
- Background Sample
- Screening Point
- Flowline Removed

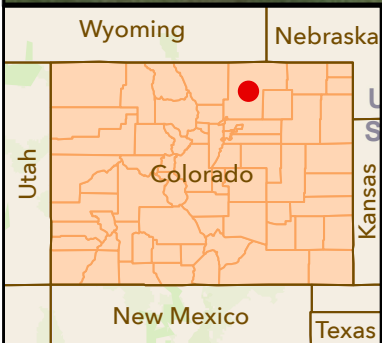
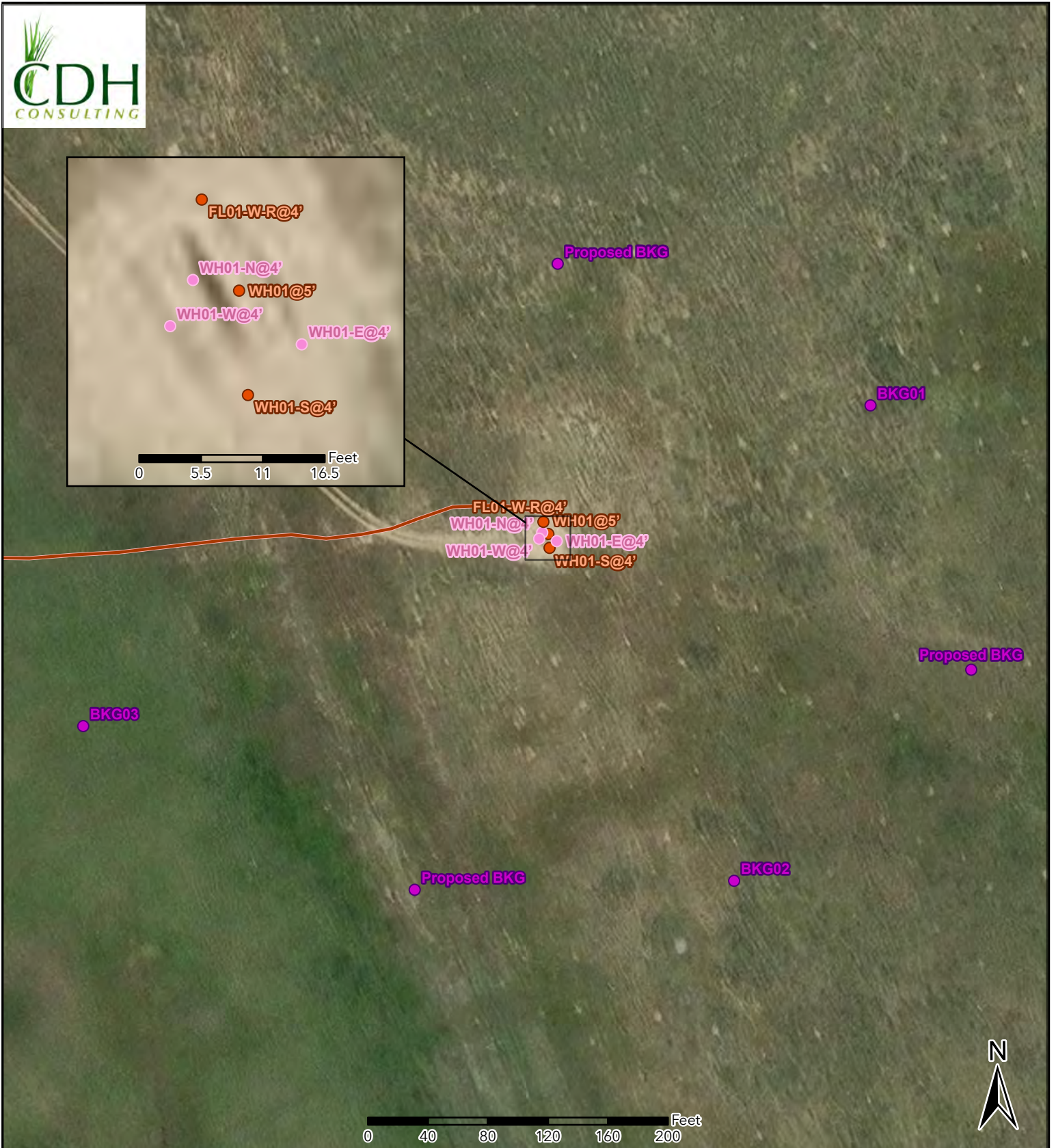


Figure 5 Supplemental Site Investigation Map

CORNISH 17-11
NWNW-SEC 17-T6N-R63W
Weld County, Colorado
PDC Energy Inc

- Soil Sample
- Background Sample
- Screening Point
- Flowline Removed

TABLE 1
FIELD DATA SUMMARY TABLE
(PDC ENERGY, INC. - 69175)
CORNISH 17-11 FLOWLINE, WELD COUNTY, COLORADO
REM # 42085



Sample ID	Sample Date	Depth (ft. bgs)	GPS Data ¹		PDOP Value	VOC Concentration ² (ppm)
			Latitude/Longitude			
FL01R-W@4'	9/10/2025	4	40.491838	-104.468001	0.8	0.9
FL01-01@4'	9/10/2025	4	40.491889	-104.468143	1.1	1.2
FL01-02@4'	9/10/2025	4	40.491822	-104.468879	1.0	0.7
FL01-03@4'	9/10/2025	4	40.491793	-104.469553	0.7	11.4
FL01-04@4'	9/10/2025	4	40.491795	-104.470134	0.8	1.4
FL01-05@4'	9/10/2025	4	40.491994	-104.470143	0.8	24.4
FL01-06@4'	9/10/2025	4	40.492392	-104.470155	0.7	23.2
FL01-07@4'	9/10/2025	4	40.492850	-104.470168	0.7	1.1
GW01	9/18/2025	4.5	40.492355	-104.470183	1.8	NC
GW02	9/18/2025	4	40.491791	-104.469691	6.8	NC
WH01@5' ^(A)	9/8/2025	5	40.491831	-104.467995	0.9	0.0
WH01-N@4' ^(A)	9/8/2025	4	40.491834	-104.468010	0.9	0.0
WH01-S@4' ^(A)	9/8/2025	4	40.491806	-104.467992	1.0	0.0
WH01-E@4' ^(A)	9/8/2025	4	40.491818	-104.467975	0.8	0.0
WH01-W@4' ^(A)	9/8/2025	4	40.491823	-104.468017	0.9	0.0
FL01-W-R@4' ^(A)	9/8/2025	4	40.491842	-104.468003	0.9	0.0
BKG01@4.5' ^(A)	9/8/2025	4.5	40.492060	-104.467219	0.9	0.5
BKG02@4.5' ^(A)	9/8/2025	4.5	40.491193	-104.467559	0.9	0.0
BKG03@4.5' ^(A)	9/8/2025	4.5	40.491490	-104.469115	0.8	0.0
BKG01@0-6"	9/10/2025	0.5	40.491929	-104.469906	0.9	1.6
BKG01@2'	9/10/2025	2	40.491929	-104.469906	0.9	0.7

TABLE 1
FIELD DATA SUMMARY TABLE
(PDC ENERGY, INC. - 69175)
CORNISH 17-11 FLOWLINE, WELD COUNTY, COLORADO
REM # 42085



Sample ID	Sample Date	Depth (ft. bgs)	GPS Data ¹ Latitude/Longitude		PDOP Value	VOC Concentration ² (ppm)
BKG01@4'	9/10/2025	4	40.491929	-104.469906	0.9	2.1
BKG02@0-6"	9/10/2025	0.5	40.491955	-104.469688	0.8	1.1
BKG02@2'	9/10/2025	2	40.491955	-104.469688	0.8	1.6
BKG02@4'	9/10/2025	4	40.491955	-104.469688	0.8	1.2

Notes:

1. Global Positioning System (GPS) data is provided in decimal degrees using North American Datum (NAD) 83 UTM Zone 13 North.

2. Volatile organic compound (VOC) concentrations are measured in the field using a photoionization detector (PID).

A. Sample collected by separate consultant during wellhead decommissioning

PDOP = Position Dilution of Precision

ppm = Parts per million

ft. = Feet

bgs = Below ground surface

NC = Not collected

NA = Not analyzed

Source material characterization sample, excavated and transported off site for disposal.

Material excavated and transported off site for disposal.

TABLE 2
SUMMARY OF VOLATILE ORGANIC SOIL CHEMISTRY DATA
(PDC ENERGY, INC. - 69175)
CORNISH 17-11 FLOWLINE, WELD COUNTY, COLORADO
REM # 42085



Sample ID	Sample Date	Depth (ft. bgs)	Benzene (mg/kg)	Toluene (mg/kg)	Ethyl-Benzene (mg/kg)	Xylenes (mg/kg)	1,2,4-Trimethyl-Benzene (mg/kg)	1,3,5-Trimethyl-Benzene (mg/kg)	Naphthalene (mg/kg)	TPH (mg/kg)	TPH GRO (mg/kg)	TPH DRO (mg/kg)	TPH ORO (mg/kg)
ECMC Table 915-1 Limits (Residential SSL)			1.2	490	5.8	58	30	27	2	500	500**		
ECMC Table 915-1 Limits (Protection of Groundwater SSL)			0.0026	0.69	0.78	9.9	0.0081	0.0087	0.0038	500	500**		
FL01-01@4'	9/10/2025	4	<0.0012	<0.0024	<0.0024	<0.0024	<0.0024	<0.0024	<0.0026	<7.1	<0.24	<4.7	<7.1
FL01-04@4'	9/10/2025	4	<0.0012	<0.0023	<0.0023	<0.0023	<0.0023	<0.0023	<0.0024	<6.9	<0.23	<4.6	<6.9
FL01-06@4'	9/10/2025	4	<0.0012	0.0026	<0.0023	0.011	0.0096	0.0032	<0.0024	0.522	0.522	<4.6	<6.9
FL01R-W@4'	9/10/2025	4	<0.0011	<0.0021	<0.0021	<0.0021	<0.0021	<0.0021	<0.0021	188.3	<0.21	47.3	141
WH01@5 ^(A)	9/8/2025	5	<0.0010	<0.0021	<0.0021	<0.0038	<0.0029	<0.0021	<0.0020	18.28	<0.21	6.28	12.0
WH01-S@4 ^(A)	9/8/2025	4	<0.0010	<0.0020	<0.0020	0.0025	<0.0020	<0.0020	<0.0020	27.23	<0.20	8.23	19.0
FL01-W-R@4 ^(A)	9/8/2025	4	<0.0011	<0.0021	<0.0021	<0.0021	<0.0021	<0.0021	<0.0021	89.3	<0.21	22.4	66.9

Notes:

1. **Bold** values exceed the ECMC Table 915-1 limit(s).
2. Red & blue highlighted soil analytical values indicate an exceedance of the referenced soil screening level (SSL).
3. ** Summation of GRO+DRO+ORO must be less than 500 mg/kg.

A. Sample collected by separate consultant during wellhead decommissioning

ECMC = Energy and Carbon Management Commission

(<) = Analytical result is less than the indicated laboratory reporting limit.

TPH-GRO = Total petroleum hydrocarbons - gasoline range organics

TPH-DRO = Total petroleum hydrocarbons - diesel range organics

TPH-ORO = Total petroleum hydrocarbons - oil range organics

mg/kg = Milligrams per kilogram

ft. = Feet

bgs = Below ground surface

NA = Not analyzed

Source material characterization sample, excavated and transported off site for disposal.

Material excavated and transported off site for disposal.

TABLE 3
SUMMARY OF POLYCYCLIC AROMATIC HYDROCARBON SOIL CHEMISTRY DATA
(PDC ENERGY, INC. - 69175)
CORNISH 17-11 FLOWLINE, WELD COUNTY, COLORADO
REM # 42085



Sample ID	Sample Date	Depth (ft. bgs)	Acenaphthene (mg/kg)	Anthracene (mg/kg)	Benzo (a) Anthracene (mg/kg)	Benzo (a) Pyrene (mg/kg)	Benzo (b) Fluoranthene (mg/kg)	Benzo (k) Fluoranthene (mg/kg)	Chrysene (mg/kg)	Dibenzo (a,h) Anthracene (mg/kg)	Fluoranthene (mg/kg)	Fluorene (mg/kg)	Indeno (1,2,3-cd) Pyrene (mg/kg)	Pyrene (mg/kg)	1-Methyl - Naphthalene (mg/kg)	2-Methyl - Naphthalene (mg/kg)
ECMC Table 915-1 Limits (Residential SSL)			360	1800	1.1	0.11	1.1	11	110	0.11	240	240	1.1	180	18	24
ECMC Table 915-1 Limits (Protection of Groundwater SSL)			0.55	5.8	0.011	0.24	0.3	2.9	9	0.096	8.9	0.54	0.98	1.3	0.006	0.019
FL01-01@4'	9/10/2025	4	<0.0052	<0.0052	<0.0064	<0.0052	<0.0052	<0.0052	<0.0052	<0.0052	<0.0052	<0.0052	<0.0052	<0.0052	<0.0052	<0.0052
FL01-04@4'	9/10/2025	4	<0.0047	<0.0047	<0.0059	<0.0047	<0.0047	<0.0047	<0.0047	<0.0047	<0.0047	<0.0047	<0.0047	<0.0047	<0.0047	<0.0047
FL01-06@4'	9/10/2025	4	<0.0048	<0.0048	<0.0060	<0.0048	<0.0048	<0.0048	<0.0048	<0.0048	<0.0048	<0.0048	<0.0048	<0.0048	<0.0048	<0.0048
FL01R-W@4'	9/10/2025	4	<0.0041	<0.0041	<0.0052	<0.0041	<0.0041	<0.0041	<0.0041	<0.0041	<0.0041	<0.0041	<0.0041	<0.0041	<0.0041	<0.0041
WH01@5 ^(A)	9/8/2025	5	<0.0040	<0.0040	<0.0050	<0.0040	<0.0040	<0.0040	<0.0040	<0.0040	<0.0040	<0.0040	<0.0040	<0.0040	<0.0040	<0.0040
WH01-S@4 ^(A)	9/8/2025	4	<0.0039	<0.0039	<0.0049	<0.0039	<0.0039	<0.0039	<0.0039	<0.0039	<0.0039	<0.0039	<0.0039	<0.0039	<0.0039	<0.0039
FL01-W-R@4 ^(A)	9/8/2025	4	<0.0043	<0.0043	<0.0053	<0.0043	<0.0043	<0.0043	<0.0043	<0.0043	<0.0043	<0.0043	<0.0043	<0.0043	<0.0043	<0.0043

Notes:

- Bold** values exceed the ECMC Table 915-1 limit(s).
- Red & blue highlighted soil analytical values indicate an exceedance of the referenced soil screening level (SSL).
- * Indicates laboratory minimum detection limit in excess of SSL.

A. Sample collected by separate consultant during wellhead decommissioning

ECMC = Energy and Carbon Management Commission

(<) = Analytical result is less than the indicated laboratory reporting limit.

mg/kg = Milligrams per kilogram

ft. = Feet

bgs = Below ground surface

NA = Not analyzed

Source material characterization sample, excavated and transported off site for disposal.

Material excavated and transported off site for disposal.

TABLE 4
SUMMARY OF SOIL SUITABILITY FOR RECLAMATION
(PDC ENERGY, INC. - 69175)
CORNISH 17-11 FLOWLINE, WELD COUNTY, COLORADO
REM # 42085



Sample ID	Sample Date	Depth (ft. bgs)	pH (Standard Units)	EC (mmhos/cm)	SAR (Standard Units)	Boron (mg/L)
ECMC Table 915-1 Soil Suitability Limits			6 - 8.3	<4	<6	2
FL01-01@4'	9/10/2025	4	6.97	0.21	0.225	<0.50
FL01-04@4'	9/10/2025	4	6.9	1.8	6.52	1.32
FL01-06@4'	9/10/2025	4	8.42	1.2	3.38	<0.50
FL01R-W@4'	9/10/2025	4	7.01	0.31	0.517	<0.50
WH01@5' ^(A)	9/8/2025	5	7.80	0.61	1.72	<0.50
WH01-S@4' ^(A)	9/8/2025	4	7.57	0.39	0.496	<0.50
FL01-W-R@4' ^(A)	9/8/2025	4	8.31	0.44	0.204	<0.50
BKG01@4.5' ^(A)	9/8/2025	4.5	7.90	0.44	0.467	<0.50
BKG02@4.5' ^(A)	9/8/2025	4.5	7.91	0.38	0.896	<0.50
BKG03@4.5' ^(A)	9/8/2025	4.5	0.10	0.81	1.82	<0.50
BKG01@0-6"	9/10/2025	0.5	7.22	2.6	8.55	1.04
BKG01@2'	9/10/2025	2	7.29	4.6	9.14	1.43
BKG01@4'	9/10/2025	4	7.82	2.2	5.09	<0.50
BKG02@0-6"	9/10/2025	0.5	7.91	1.8	15.2	2.20
BKG02@2'	9/10/2025	2	6.83	3.7	13.4	1.78
BKG02@4'	9/10/2025	4	8.41	5.2	10.1	1.09
Maximum Background Concentration			8.41	-	15.2	-

Notes:

1. **Bold** faced values exceed the ECMC Table 915-1 limit(s), but are within background concentrations.
2. **Bold** faced values exceed the ECMC Table 915-1 limit(s) and native background concentrations.
3. Brown highlighted soil analytical values indicate a regulatory exceedance.

A. Sample collected by separate consultant during wellhead decommissioning

ECMC = Energy and Carbon Management Commission

(<) = Analytical result is less than the indicated laboratory reporting limit.

mg/L = Milligrams per liter

ft. = Feet

bgs = Below ground surface

NA = Not analyzed

EC = Electrical conductivity

SAR = Sodium adsorption ratio

mmhos/cm = Millimohs per centimeter

Source material characterization sample, excavated and transported off site for disposal.

Material excavated and transported off site for disposal.

TABLE 5
SUMMARY OF METALS IN SOIL CHEMISTRY DATA
(PDC ENERGY, INC. - 69175)
CORNISH 17-11 FLOWLINE, WELD COUNTY, COLORADO
REM # 42085



Sample ID	Sample Date	Depth (ft. bgs)	Arsenic (mg/kg)	Barium (mg/kg)	Cadmium (mg/kg)	Chromium (VI) ⁶ (mg/kg)	Copper (mg/kg)	Lead (mg/kg)	Nickel (mg/kg)	Selenium (mg/kg)	Silver (mg/kg)	Zinc (mg/kg)
ECMC Table 915-1 Limits (Residential SSL)			0.68	15000	71	0.3	3100	400	1500	390	390	23000
ECMC Table 915-1 Limits (Protection of Groundwater SSL)			0.29	82	0.38	0.00067	46	14	26	0.26	0.8	370
FL01-01@4'	9/10/2025	4	2.2	35.3	<0.058	<0.51	2.4	3.4	2.8	<0.23	<0.058	14.6
FL01-04@4'	9/10/2025	4	2.2	33.8	0.096	<0.46	3.9	4.9	3.7	<0.24	<0.059	13.8
FL01-06@4'	9/10/2025	4	2.1	30.6	0.13	<0.47	4.1	4.8	3.9	0.34	<0.056	13.7
FL01R-W@4'	9/10/2025	4	2.4	56.7	0.070	<0.42	3.0	68.3	2.9	<0.20	<0.051	14.0
WH01@5 ^(A)	9/8/2025	5	2.3	47.0	0.081	<0.42	2.4	5.5	2.3	<0.21	<0.051	9.6
WH01-S@4 ^(A)	9/8/2025	4	2.3	30.1	0.10	<0.42	2.5	16.6	2.5	<0.20	<0.050	10.6
FL01-W-R@4 ^(A)	9/8/2025	4	2.3	45.1	0.14	<0.42	3.6	34.5	2.7	<0.21	<0.052	14.1
BKG01@0-6"	9/10/2025	0.5	NA	NA	NA	NA	NA	NA	NA	NA	NA	NA
BKG01@2'	9/10/2025	2	NA	NA	NA	NA	NA	NA	NA	NA	NA	NA
BKG01@4'	9/10/2025	4	NA	NA	NA	NA	NA	NA	NA	NA	NA	NA
BKG02@0-6"	9/10/2025	0.5	NA	NA	NA	NA	NA	NA	NA	NA	NA	NA
BKG02@2'	9/10/2025	2	NA	NA	NA	NA	NA	NA	NA	NA	NA	NA
BKG02@4'	9/10/2025	4	NA	NA	NA	NA	NA	NA	NA	NA	NA	NA
BKG01@4.5 ^(A)	9/8/2025	4.5	1.7	33.0	<0.047	<0.40	1.9	2.4	1.6	<0.19	<0.047	6.8
BKG02@4.5 ^(A)	9/8/2025	4.5	2.8	78.9	<0.051	<0.42	2.5	3.6	3.2	<0.21	<0.051	10.9
BKG03@4.5 ^(A)	9/8/2025	4.5	3.0	41.7	0.13	<0.49	4.2	4.9	4.4	<0.24	<0.061	16.2
1.25x Maximum Background Concentration			3.8	-	-	-	-	6.1	-	NA	-	-

Notes:

1. **Bold** faced values exceed the ECMC Table 915-1 limit(s), but are within 1.25x background concentrations.
 2. **Red** faced values exceed the ECMC Table 915-1 limit(s) and native background concentrations.
 3. Red & blue highlighted soil analytical values indicate an exceedance of the referenced soil screening level (SSL).
 4. Reporting limit used for 1.25 multiplier when all background results for a specific metal are non-detect.
 5. * Indicates laboratory minimum detection limit in excess of SSL.
 6. Compound falls within the ECMC Table 915-1 footnote 9.
- A. Sample collected by separate consultant during wellhead decommissioning
 ECMC = Energy & Carbon Management Commission
 (<) = Analytical result is less than the indicated laboratory reporting limit.
 mg/kg = Milligrams per kilogram
 ft. = Feet
 bgs = Below ground surface
 NA = Not analyzed

TABLE 5
SUMMARY OF METALS IN SOIL CHEMISTRY DATA
(PDC ENERGY, INC. - 69175)
CORNISH 17-11 FLOWLINE, WELD COUNTY, COLORADO
REM # 42085



Sample ID	Sample Date	Depth (ft. bgs)	Arsenic (mg/kg)	Barium (mg/kg)	Cadmium (mg/kg)	Chromium (VI) ⁶ (mg/kg)	Copper (mg/kg)	Lead (mg/kg)	Nickel (mg/kg)	Selenium (mg/kg)	Silver (mg/kg)	Zinc (mg/kg)
ECMC Table 915-1 Limits (Residential SSL)			0.68	15000	71	0.3	3100	400	1500	390	390	23000
ECMC Table 915-1 Limits (Protection of Groundwater SSL)			0.29	82	0.38	0.00067	46	14	26	0.26	0.8	370

Source material characterization sample, excavated and transported off site for disposal.

Material excavated and transported off site for disposal.

TABLE 6
SUMMARY OF GROUNDWATER ELEVATION DATA AND ORGANIC CHEMISTRY DATA
(PDC ENERGY, INC. - 69175)
CORNISH 17-11 FLOWLINE, WELD COUNTY, COLORADO
REM # 42085



Sample ID	Sample Date	Benzene (µg/L)	Toluene (µg/L)	Ethyl-Benzene (µg/L)	Xylenes (µg/L)	Naphthalene (µg/L)	1,2,4-Trimethyl-Benzene (µg/L)	1,3,5-Trimethyl-Benzene (µg/L)	Depth to Groundwater Below Ground Surface (ft)
ECMC Table 915-1 Limits		5.0	560	700	1,400	140	67	67	
GW01	09/18/2025	18.3	98.4	23.7	180	6.6	67.4	20.1	4.5
GW02	09/18/2025	<2.5	<5.0	<5.0	<5.0	<25	<10	<10	4

Notes:

1. **Bold** values exceed the ECMC limit(s)
2. Blue highlighted groundwater analytical values indicate a regulatory exceedance

NA = Not Analyzed

ECMC = Energy & Carbon Management Commission

(<) = Analytical result is less than the indicated laboratory reporting limit.

µg/L = micrograms per liter

ft. = Feet

TABLE 7
 SUMMARY OF INORGANIC GROUNDWATER CHEMISTRY DATA
 (PDC ENERGY, INC. - 69175)
 CORNISH 17-11 FLOWLINE, WELD COUNTY, COLORADO
 REM # 42085



Sample ID	Sample Date	Total Dissolved Solids (mg/L)	Chloride Ion (mg/L)	Sulfate Ion (mg/L)
ECMC Table 915-1 Limits		<1.25 x local background	250 or <1.25 x local background	250 or <1.25 x local background
GW01	09/18/2025	1920	74.7	748
GW02	09/18/2025	1610	62.0	526

Notes:

- Bold** values exceed the ECMC limit(s)
 - Blue highlighted groundwater analytical values indicate a regulatory exceedance
- NA = Not Analyzed, IW = Insufficient Water
 ECMC = Energy & Carbon Management Commission
 mg/L = Milligrams per liter



CLIENT: PDC Energy, Inc. or PDC Permian		SITE NAME: Cornish 17-11 (WH/FL)					DATE: 9/10/2025	REM. PROJECT #: 42207	WEATHER: 88 and sunny	
SITE DIRECTIONS: 392 and CR61.5 north .75 and .5 east onto site							JOB#: 10751			
LEGALS AND LAT/LONG: 40.4918649, -104.4679714							TASMAN PERSONNEL: MB, RS			
SOIL TYPES: Well Graded Sand - SW							SURFACE GRADIENT: West			
SOIL SAMPLING							FACILITY INFRASTRUCTURE			
Date/Time	Soil Sample ID	PID (ppm)	Visual	Olfactory	Photo?	Grab or Lab Sample?	EQUIPMENT		Quantity	
							Above Ground Storage Tank (AST)			
09-10-2025 10:46	FL01R-W@4'	0.9	No Staining	No Odor	Yes	Lab	Buried or Partially Buried Vessel			
09-10-2025 10:48	FL01-01@4'	1.2	No Staining	No Odor	Yes	Lab	Separator			
09-10-2025 11:10	FL01-02@4'	0.7	No Staining	No Odor	Yes	Grab	Emission Control Device (ECD)			
09-10-2025 11:58	FL01-03@4'	11.4	Organic Cont	Organic Odor	Yes	Grab	Dump Line			
09-10-2025 12:20	FL01-04@4'	1.4	Organic Cont	Organic Odor	Yes	Lab	Wellhead		1 ✓	
09-10-2025 11:53	FL01-05@4'	24.4	Organic Cont	Organic Odor	Yes	Grab	Flowline		1 ✓	
09-10-2025 11:37	FL01-06@4'	23.2	Organic Cont	Organic Odor	Yes	Lab	Other:			
09-10-2025 11:29	FL01-07@4'	1.1	No Staining	No Odor	Yes	Grab	Soil Loads Removed			
09-10-2025 12:25	BKG01@0-6"	1.6	No Staining	No Odor	Yes	Lab	IMPACTED SOIL IDENTIFIED?			
09-10-2025 12:27	BKG01@2'	0.7	No Staining	No Odor	Yes	Lab	ESTIMATED VOLUME OF IMPACTS:			
09-10-2025 12:28	BKG01@4'	2.1	Organic Cont	Organic Odor	Yes	Lab	Date	Number	CY	
09-10-2025 12:31	BKG02@0-6"	1.1	No Staining	No Odor	Yes	Lab				
09-10-2025 12:32	BKG02@2'	1.6	No Staining	No Odor	Yes	Lab				
09-10-2025 12:35	BKG02@4'	1.2	Organic Cont	Organic Odor	Yes	Lab				
							Total Removed		0 0	
							Disposal Facility:			
							Groundwater Recovery			
							DATE GW ENCOUNTERED:		DEPTH:	
							GROUNDWATER IN CONTACT WITH IMPACTED SOIL?			
							LNAPL OR SHEEN OBSERVED ON GW?			
GROUNDWATER SAMPLING							Date	BBLs		
Date/Time	Groundwater Sample ID	Depth Collected	Turbid?	Sheen?	Odor?	Photo?				
9/18/2025 14:20	GW01	4.5'	High Turbidity	None	Organic Odor	Yes				
9/18/2025 14:42	GW02	4'	High Turbidity	None	Organic Odor	Yes				
							Total Removed		0	
							Disposal Facility:			

Chevron Rockies Business Unit

Field Qualitative Criteria for ECMC Reporting Associated with the Discovery of Potentially Impacted Material

If answered **Yes** to any of the questions listed below, this may suggest the presence of potentially impacted materials as outlined in ECMC Rule 912. Out of an abundance of caution, a “Yes” response will be reported to the ECMC within 24 hours after discovery, regardless of laboratory results. **Immediately notify the RBU Remediation Team.** Include a copy of this Field Qualitative Spill Criteria Checklist in the field Report.

Please answer the following questions when on-site:

1. Is there visible petroleum hydrocarbon staining in the soil? No_____
2. Does the soil sample from the stained area have a petroleum odor? No_____
3. Is there a petroleum hydrocarbon sheen on the nearby surface water? No_____
4. Does there appear to be a sheen of the surface of accumulated groundwater or seeps within the excavation indicative of petroleum? No_____
5. Is stained soil in contact with groundwater? No_____

Please Include relevant photos of the site conditions for items 1-5.

Location name: Cornish 17-11 (WH/FL)

Please Circle Facility Type: Flowline



Photographic Log





Equipment ID: FL01R-W@4'		Equipment Type: Flowline	
Material: Steel	Volume:	Contents:	
Notes/Conditions:			

Equipment ID: FL01-01@4'		Equipment Type: Flowline	
Material: Steel	Volume:	Contents:	
Notes/Conditions:			



Photographic Log

					
Equipment ID: FL01-02@4'		Equipment Type: Flowline	Equipment ID: FL01-03@4'		Equipment Type: Flowline
Material: Steel	Volume:	Contents:	Material: Steel	Volume:	Contents:
Notes/Conditions:			Notes/Conditions:		



Photographic Log



Equipment ID: FL01-04 @ 4'		Equipment Type: Flowline	
Material: Steel	Volume:	Contents:	
Notes/Conditions:			

Equipment ID: FL01-05 @ 4'		Equipment Type: Flowline	
Material: Steel	Volume:	Contents:	
Notes/Conditions:			





Photographic Log



Equipment ID: FL01-06 @ 4'		Equipment Type: Flowline		Equipment ID: FL01-07 @ 4'		Equipment Type: Flowline	
Material: Steel	Volume:	Contents:		Material: Steel	Volume:	Contents:	
Notes/Conditions:				Notes/Conditions:			





Photographic Log

					
Equipment ID: BKG01		Equipment Type: Flowline	Equipment ID: BKG02		Equipment Type: Flowline
Material: Steel	Volume:	Contents:	Material: Steel	Volume:	Contents:
Notes/Conditions:			Notes/Conditions:		



Photographic Log

					
Equipment ID: GW01		Equipment Type:	Equipment ID: GW02		Equipment Type:
Material:	Volume:	Contents:	Material:	Volume:	Contents:
Notes/Conditions: FL01-06			Notes/Conditions: FL01-03		

Photographic Log
CORNISH 17-11- REM #42085
PDC Energy, Inc.
09/08/2025



Photo 1: View of WH01-N screening location, facing north

Photographic Log
CORNISH 17-11- REM #42085
PDC Energy, Inc.
09/08/2025



Photo 2: View of WH01-S sample location, facing southwest

Photographic Log
CORNISH 17-11- REM #42085
PDC Energy, Inc.
09/08/2025



Photo 3: View of WH01-W screening location, facing west-northwest

Photographic Log
CORNISH 17-11- REM #42085
PDC Energy, Inc.
09/08/2025



Photo 4: View of WH01-E screening location, facing southeast

Photographic Log
CORNISH 17-11- REM #42085
PDC Energy, Inc.
09/08/2025



Photo 5: View of WH01 sample location, facing west

Photographic Log
CORNISH 17-11- REM #42085
PDC Energy, Inc.
09/08/2025



Photo 6: View of FL01-R-W sample location, facing northeast

Photographic Log
CORNISH 17-11- REM #42085
PDC Energy, Inc.
09/08/2025



Photo 7: View of background sample location 1, facing west-southwest

Photographic Log
CORNISH 17-11- REM #42085
PDC Energy, Inc.
09/08/2025



Photo 8: View of background sample location 2, facing west

Photographic Log
CORNISH 17-11- REM #42085
PDC Energy, Inc.
09/08/2025



Photo 9: View of background sample location 3, facing west

Wellhead Closure Checklist

COGCC Rule 911.a.(4) Environmental Site Closure Assessment Field Form

Additional attachments (optional):		Pit Closure		Tank Battery Closure		Flowline Closure		Partially Buried Vault Closure	
Site Name & COGCC Facility Number: CORNISH 17-11 / Facility ID #286284		Date: 09/09/2025						Remediation Project #: 42085	
Associated Wells: CORNISH 17-11		Age of Site: 10/12/2007 (Spud date)						Number of Photos Attached: 9	
Location: 40.491830, -104.468000							Estimated Facility Size (acres): ~0.1		
General Condition of Site: Good									
USCS Soil Type: Poorly-graded Sands (SP)				Estimated Depth to Groundwater: No groundwater encountered					
Hydrocarbon Impacted Soils / Spills: Not encountered									
Salt Crusted Soils or Impacted Vegetation: Not encountered									
Wellhead(s)									
Well API	05-123-24169								
Age	10/12/2007 (Spud date)								
Condition of surface	Good								
PID Readings	0.0 ppm								
Condition of subsurface	Good								
PID Readings	0.0 ppm								
Sample taken? Location/Sample ID#	See attached								
Photo Number(s)	See attached								
Other observations regarding wellheads: None									
Summary									
Was impacted soil identified? No Yes - less than 10 cubic yards Yes - more than 10 cubic yards									
Total number of samples field screened: 6					Total number of samples collected: 3				
Highest PID Reading: 0.0 ppm					Total number of samples submitted to lab for analysis: 3				
If more than 10 cubic yards of impacted soil were observed:									
Vertical extent:					Estimated spill volume:				
Lateral extent:					Volume of soil removed:				
Is additional investigation required?									
Was groundwater encountered during the investigation? No Yes - not impacted or in contact with impacted soils Yes - groundwater impacted and/or in contact with impacted soils									
Measured depth to groundwater:					Was remedial groundwater removal conducted? Yes No				
Date Groundwater was encountered:					Commencement date of removal:				
Sheen on groundwater?			Yes	No	Volume of groundwater removed prior to sampling:				
Free product observed?			Yes	No	Volume of groundwater removed post sampling:				
Total number of samples collected:					Total Volume of groundwater removed:				
Total number of samples submitted to lab for analysis:									