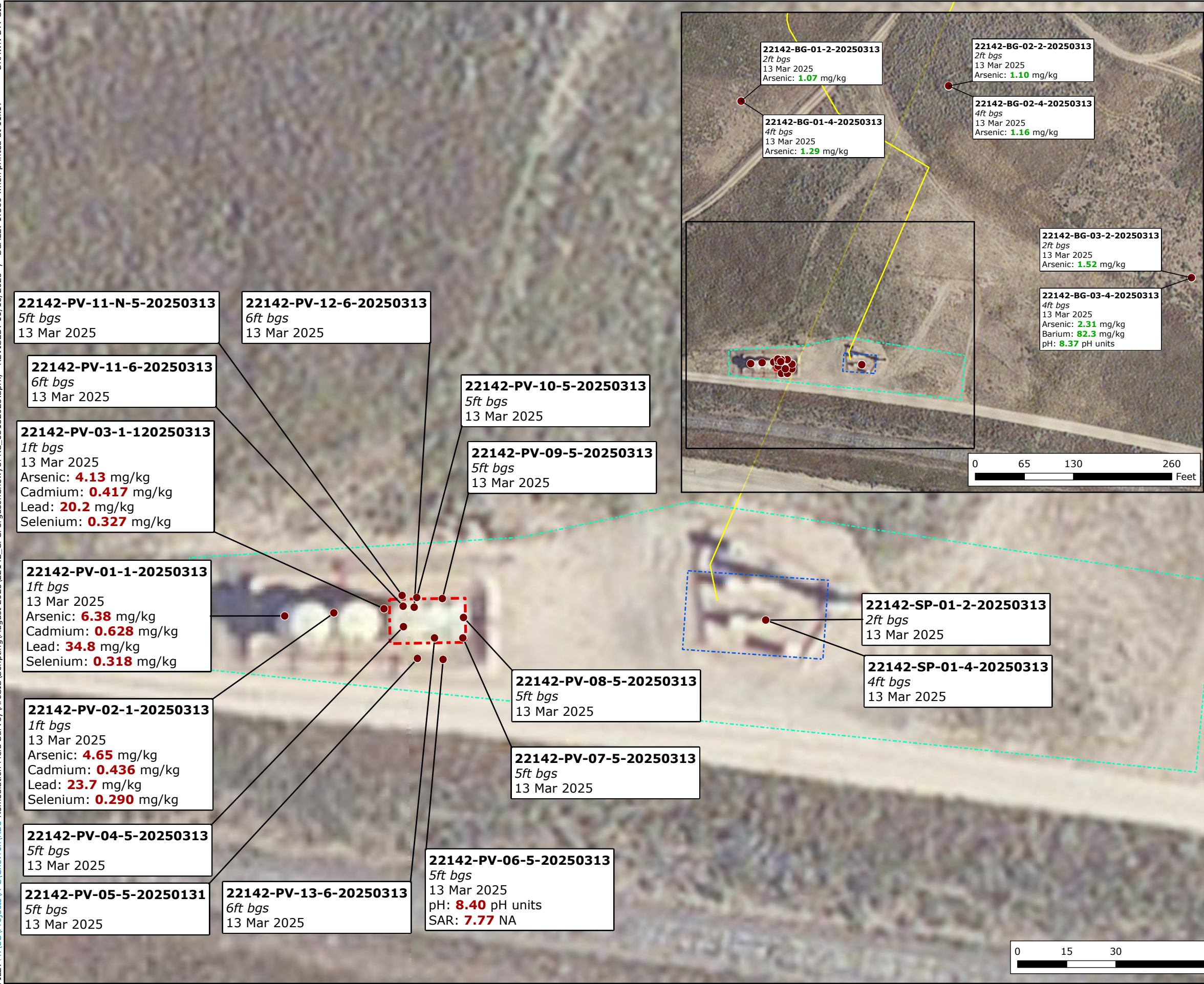


FILE: M:\US Projects\A-C\Chevron\RBURemediationFieldSurvey\ArcGIS\Scripting\August 2025\22142_CPCFergusonChevyUPRC_03132025.aprx, REVISED: 11/18/2025, SCALE: 1:360 when printed at 11x17 DRAWN BY: GIS



Legend

- Soil Sample Location
- Approximate Flowline
- Former CPC Ferguson Chewy UPRC T5N-R64W-S23 L01 Tank Battery (Decommissioned)
- Separator Containment Area (Decommissioned)
- Approximate Water Vault Location (Removed)

Notes:
 SP-01@4 and PV-04@5 indicated that they were analyzed OOH for PAHs.
 Results in milligrams per kilogram (mg/kg) unless otherwise noted.
 Green values are above ECMC Table 915-1 and representative of background levels.
 Red values are above ECMC Table 915-1 and/or calculated background levels.
 Orange values are above ECMC Table 915-1 Clean-Up Concentrations (Organics Exceedance).
 Sampling conducted by former consultant(s) denoted in grey, with exceedances in bold.

Analytical results below laboratory detection limits, or within compliance of ECMC Table 915-1 not shown. Non-background samples below maximum calculated site-specific background levels are not shown.
 ECMC Table 915-1 GWSSLs Listed in mg/kg
 Arsenic = 0.29 (max. BG = 2.31) (1.25x max. BG = 2.89)
 Barium = 82.0 (max. BG = 82.3) (1.25x max. BG = 103)
 Cadmium = 0.38
 Lead = 14.0
 SAR = 6
 Selenium = 0.26
 pH = 6 - 8.3 pH units (max. BG = 8.37)

ECMC = Energy and Carbon Management Commission
 ft bgs = feet below ground surface
 BG = Background
 FL = Flowline
 WH = Wellhead
 GWSSL = Groundwater Soil Screening Levels
 RSSL = Residential Soil Screening Levels

Figure 1
Exceedance Values
in Soil Samples
CPC Ferguson Chewy UPRC
REM# 22142
Operator: 1003225
 RBURemediationFieldSurvey
 Chevron
 Weld County, CO

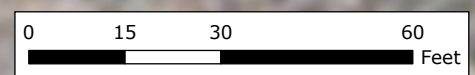


TABLE 1
FIELD DATA SUMMARY TABLE
OPERATOR NOBLE 100322
CPC FERGUSON CHEWY UPRC, UPRC 23-3H4, WELD COUNTY, COLORADO
REM # 22142

Sample ID	Sample Date	Depth (ft bgs)	GPS Data Latitude	GPS Data Longitude	PDOP Value	VOC Concentration (ppm)
22142-BG-01-2-20250313	03/13/2025	2	40.38461	-104.51722		1.9
22142-BG-01-4-20250313	03/13/2025	4	40.38461	-104.51722		0.9
22142-BG-02-2-20250313	03/13/2025	2	40.38466	-104.51623		1.9
22142-BG-02-4-20250313	03/13/2025	4	40.38466	-104.51623		0.9
22142-BG-03-2-20250313	03/13/2025	2	40.38395	-104.51509		0.1
22142-BG-03-4-20250313	03/13/2025	4	40.38395	-104.51509		0.1
22142-PV-01-1-20250313	03/13/2025	1	40.38366	-104.51718		8.7
22142-PV-02-1-20250313	03/13/2025	1	40.38366	-104.51713		7.7
22142-PV-03-1-20250313	03/13/2025	1	40.38367	-104.51707		5.6
22142-PV-04-5-20250313	03/13/2025	5	40.38365	-104.51705		7.4
22142-PV-05-5-20250313	03/13/2025	5	40.38362	-104.51704		5.5
22142-PV-06-5-20250313	03/13/2025	5	40.38362	-104.51701		7.5
22142-PV-07-5-20250313	03/13/2025	5	40.38364	-104.51699		5.8
22142-PV-08-5-20250313	03/13/2025	5	40.38366	-104.51699		0.1
22142-PV-09-5-20250313	03/13/2025	5	40.38367	-104.51701		5.7
22142-PV-10-5-20250313	03/13/2025	5	40.38367	-104.51704		7.8
22142-PV-11-6-20250313	03/13/2025	6	40.38367	-104.51705		9.2
22142-PV-11-N-5-20250313	03/13/2025	5	40.38368	-104.51705		4.1
22142-PV-12-6-20250313	03/13/2025	6	40.38367	-104.51704		0.4
22142-PV-13-6-20250313	03/13/2025	6	40.38364	-104.51702		3.1
22142-SP-01-2-20250313	03/13/2025	2	40.38365	-104.51666		6.8
22142-SP-01-4-20250313	03/13/2025	4	40.38365	-104.51666		5.1

Notes:

1. Global Positioning System (GPS) data is provided in decimal degrees using North American Datum (NAD) 83 UTM Zone 13 North.
2. Volatile organic compound (VOC) concentrations are measured in the field using a photoionization detector (PID).

ECMC = Energy and Carbon Management Commission
PDOP = Position Dilution of Precision
ppm = Parts per million
ft bgs = Feet below ground surface

Source material characterization sample, excavated and transported off site for disposal.

TABLE 2
SUMMARY OF VOLATILE ORGANIC SOIL CHEMISTRY DATA
OPERATOR NOBLE 100322
CPC FERGUSON CHEWY UPRC, UPRC 23-3H4, WELD COUNTY, COLORADO
REM # 22142

Sample ID	Sample Date	Depth (ft bgs)	Benzene (mg/kg)	Toluene (mg/kg)	Ethyl-benzene (mg/kg)	Xylenes (mg/kg)	1,2,4-Trimethyl-Benzene (mg/kg)	1,3,5-Trimethyl-Benzene (mg/kg)	Naphthalene (mg/kg)	TPH (mg/kg)	TPH GRO (mg/kg)	TPH DRO (mg/kg)	TPH ORO (mg/kg)
ECMC Table 915-1 Limits (Residential SSL)			1.2	490	5.8	58	30	27	2	500	500**		
ECMC Table 915-1 Limits (Protection of Groundwater SSL)			0.0026	0.69	0.78	9.9	0.0081	0.0087	0.0038	500	500**		
22142-PV-01-1-20250313	03/13/2025	1	< 0.00200 Ua	< 0.00200 Ua	< 0.00200 Ua	< 0.00200 Ua	< 0.00200 Ua	< 0.00200 Ua	< 0.00388* U	< 100	< 0.200 Ua	< 25.0 Ua	< 100 Ua
22142-PV-02-1-20250313	03/13/2025	1	< 0.00200 Ua	< 0.00200 Ua	< 0.00200 Ua	< 0.00200 Ua	< 0.00200 Ua	< 0.00200 Ua	< 0.00349 U	< 100	< 0.200 Ua	< 25.0 Ua	< 100 Ua
22142-PV-03-1-20250313	03/13/2025	1	< 0.00200 Ua	< 0.00200 Ua	< 0.00200 Ua	< 0.00200 Ua	< 0.00200 Ua	< 0.00200 Ua	< 0.00345 U	< 100	< 0.200 Ua	< 25.0 Ua	< 100 Ua
22142-PV-04-5-20250313	03/13/2025	5	< 0.00200 Ua	< 0.00200 Ua	< 0.00200 Ua	< 0.00200 Ua	< 0.00200 Ua	< 0.00200 Ua	< 0.00404* hU	< 100	< 0.200 Ua	< 25.0 Ua	< 100 Ua
22142-PV-05-5-20250313	03/13/2025	5	< 0.00200 Ua	< 0.00200 Ua	< 0.00200 Ua	< 0.00200 Ua	< 0.00200 Ua	< 0.00200 Ua	< 0.00362 U	< 100	< 0.200 Ua	< 25.0 Ua	< 100 Ua
22142-PV-06-5-20250313	03/13/2025	5	< 0.00200 Ua	< 0.00200 Ua	< 0.00200 Ua	< 0.00200 Ua	< 0.00200 Ua	< 0.00200 Ua	< 0.00365 U	< 100	< 0.200 Ua	< 25.0 Ua	< 100 Ua
22142-PV-07-5-20250313	03/13/2025	5	< 0.00200 Ua	< 0.00200 Ua	< 0.00200 Ua	< 0.00200 Ua	< 0.00200 Ua	< 0.00200 Ua	< 0.00351 U	< 100	< 0.200 Ua	< 25.0 Ua	< 100 Ua
22142-PV-08-5-20250313	03/13/2025	5	< 0.00200 Ua	< 0.00200 Ua	< 0.00200 Ua	< 0.00200 Ua	< 0.00200 Ua	< 0.00200 Ua	< 0.00346 U	< 100	< 0.200 Ua	< 25.0 Ua	< 100 Ua
22142-PV-09-5-20250313	03/13/2025	5	< 0.00200 Ua	< 0.00200 Ua	< 0.00200 Ua	< 0.00200 Ua	< 0.00200 Ua	< 0.00200 Ua	< 0.00344 U	< 100	< 0.200 Ua	< 25.0 Ua	< 100 Ua
22142-PV-10-5-20250313	03/13/2025	5	< 0.00200 Ua	< 0.00200 Ua	< 0.00200 Ua	< 0.00200 Ua	< 0.00200 Ua	< 0.00200 Ua	< 0.00343 U	< 100	< 0.200 Ua	< 25.0 Ua	< 100 Ua
22142-PV-11-6-20250313	03/13/2025	6	< 0.00200 Ua	< 0.00200 Ua	< 0.00200 Ua	< 0.00200 Ua	< 0.00200 Ua	< 0.00200 Ua	< 0.00365 U	< 100	< 0.200 Ua	< 25.0 Ua	< 100 Ua
22142-PV-11-N-5-20250313	03/13/2025	5	< 0.00200 Ua	< 0.00200 Ua	< 0.00200 Ua	< 0.00200 Ua	< 0.00200 Ua	< 0.00200 Ua	< 0.00356 U	< 100	< 0.200 Ua	< 25.0 Ua	< 100 Ua
22142-PV-12-6-20250313	03/13/2025	6	< 0.00200 Ua	< 0.00200 Ua	< 0.00200 Ua	< 0.00200 Ua	< 0.00200 Ua	< 0.00200 Ua	< 0.00394* U	< 100	< 0.200 Ua	< 25.0 Ua	< 100 Ua
22142-PV-13-6-20250313	03/13/2025	6	< 0.00200 Ua	< 0.00200 Ua	< 0.00200 Ua	< 0.00200 Ua	< 0.00200 Ua	< 0.00200 Ua	< 0.00357 U	< 100	< 0.200 Ua	< 25.0 Ua	< 100 Ua
22142-SP-01-2-20250313	03/13/2025	2	< 0.00200 Ua	< 0.00200 Ua	< 0.00200 Ua	< 0.00200 Ua	< 0.00200 Ua	< 0.00200 Ua	< 0.00358 U	< 100	< 0.200 Ua	< 25.0 Ua	< 100 Ua
22142-SP-01-4-20250313	03/13/2025	4	< 0.00200 Ua	< 0.00200 Ua	< 0.00200 Ua	< 0.00200 Ua	< 0.00200 Ua	< 0.00200 Ua	< 0.00398* hU	< 100	< 0.200 Ua	< 25.0 Ua	< 100 Ua

Notes:

1. Bold values exceed the ECMC Table 915-1 limit(s)
2. Red & blue highlighted soil analytical values indicate an exceedance of the referenced soil screening level (SSL)
3. * Indicates laboratory minimum detection limit in excess of SSL
4. ** Summation of GRO+DRO+ORO must be less than 500 mg/kg

ECMC = Energy and Carbon Management Commission

(<) = Analytical result is less than the indicated laboratory reporting limit.

TPH-GRO = Total petroleum hydrocarbons - gasoline range organics

TPH-DRO = Total petroleum hydrocarbons - diesel range organics

TPH-ORO = Total petroleum hydrocarbons - oil range organics

mg/kg = Milligrams per kilogram

ft bgs = Feet below ground surface

NA - Not analyzed

Assume wet weight on all historical data unless the lab data specifies wet vs. dry.

Qualifier Definition(s)

Origins Laboratory, Inc:

hU = Preparation or preservation holding time was exceeded. Sample is Non-Detect.

U = Sample is Non-Detect.

Ua = Sample is Non-Detect.

Source material characterization sample, excavated and transported off site for disposal.

TABLE 3
SUMMARY OF POLYCYCLIC AROMATIC HYDROCARBON SOIL CHEMISTRY DATA
OPERATOR NOBLE 100322
CPC FERGUSON CHEWY UPRC, UPRC 23-3H4, WELD COUNTY, COLORADO
REM # 22142

Sample ID	Sample Date	Depth (ft bgs)	Acenaphthene (mg/kg)	Anthracene (mg/kg)	Benzo(a)anthracene (mg/kg)	Benzo(a)pyrene (mg/kg)	Benzo(b)fluoranthene (mg/kg)	Benzo(k)fluoranthene (mg/kg)	Chrysene (mg/kg)	Dibenzo(a,h)anthracene (mg/kg)	Fluoranthene (mg/kg)	Fluorene (mg/kg)	Indeno(1,2,3-cd)pyrene (mg/kg)	Pyrene (mg/kg)	1-Methyl-Naphthalene (mg/kg)	2-Methyl-Naphthalene (mg/kg)
ECMC Table 915-1 Limits (Residential SSL)			360	1800	1.1	0.11	1.1	11	110	0.11	240	240	1.1	180	18	24
ECMC Table 915-1 Limits (Protection of Groundwater SSL)			0.55	5.8	0.011	0.24	0.3	2.9	9	0.096	8.9	0.54	0.98	1.3	0.006	0.019
22142-PV-01-1-20250313	03/13/2025	1	< 0.00388 U	< 0.00388 U	0.00543	0.00776	0.00814	0.00349 J	0.00737	0.00194 J	0.00698	< 0.00388 U	0.00543	0.0105	< 0.00388 U	< 0.00388 U
22142-PV-02-1-20250313	03/13/2025	1	< 0.00349 U	< 0.00349 U	0.00802	0.0115	0.0129	0.00418	0.0119	0.00174 J	0.0108	< 0.00349 U	0.00802	0.0160	< 0.00349 U	< 0.00349 U
22142-PV-03-1-20250313	03/13/2025	1	< 0.00345 U	< 0.00345 U	0.00725	0.0104	0.0114	0.00414	0.0100	0.00207 J	0.00898	< 0.00345 U	0.00725	0.0135	< 0.00345 U	< 0.00345 U
22142-PV-04-5-20250313	03/13/2025	5	< 0.00404 hU	< 0.00404 hU	< 0.00404 hU	< 0.00404 hU	< 0.00404 hU	< 0.00404 hU	< 0.00404 hU	< 0.00404 hU	< 0.00404 hU	< 0.00404 hU	< 0.00404 hU	0.00202 hJ	< 0.00404 hU	< 0.00404 hU
22142-PV-05-5-20250313	03/13/2025	5	< 0.00362 U	< 0.00362 U	0.00471	0.00398	0.00434	0.00326 J	0.00362	0.00326 J	0.00434	< 0.00362 U	0.00398	0.00434	< 0.00362 U	< 0.00362 U
22142-PV-06-5-20250313	03/13/2025	5	< 0.00365 U	< 0.00365 U	< 0.00365 U	< 0.00365 U	< 0.00365 U	< 0.00365 U	< 0.00365 U	< 0.00365 U	< 0.00365 U	< 0.00365 U	< 0.00365 U	< 0.00365 U	< 0.00365 U	< 0.00365 U
22142-PV-07-5-20250313	03/13/2025	5	< 0.00351 U	< 0.00351 U	< 0.00351 U	< 0.00351 U	< 0.00351 U	< 0.00351 U	< 0.00351 U	< 0.00351 U	< 0.00351 U	< 0.00351 U	< 0.00351 U	< 0.00351 U	< 0.00351 U	< 0.00351 U
22142-PV-08-5-20250313	03/13/2025	5	< 0.00346 U	< 0.00346 U	< 0.00346 U	< 0.00346 U	< 0.00346 U	< 0.00346 U	< 0.00346 U	< 0.00346 U	< 0.00346 U	< 0.00346 U	< 0.00346 U	< 0.00346 U	< 0.00346 U	< 0.00346 U
22142-PV-09-5-20250313	03/13/2025	5	< 0.00344 U	< 0.00344 U	< 0.00344 U	< 0.00344 U	< 0.00344 U	< 0.00344 U	< 0.00344 U	< 0.00344 U	< 0.00344 U	< 0.00344 U	< 0.00344 U	< 0.00344 U	< 0.00344 U	< 0.00344 U
22142-PV-10-5-20250313	03/13/2025	5	< 0.00343 U	< 0.00343 U	< 0.00343 U	< 0.00343 U	< 0.00343 U	< 0.00343 U	< 0.00343 U	< 0.00343 U	< 0.00343 U	< 0.00343 U	< 0.00343 U	< 0.00343 U	< 0.00343 U	< 0.00343 U
22142-PV-11-6-20250313	03/13/2025	6	< 0.00365 U	< 0.00365 U	< 0.00365 U	< 0.00365 U	< 0.00365 U	< 0.00365 U	< 0.00365 U	< 0.00365 U	< 0.00365 U	< 0.00365 U	< 0.00365 U	< 0.00365 U	< 0.00365 U	< 0.00365 U
22142-PV-11-N-5-20250313	03/13/2025	5	< 0.00356 U	< 0.00356 U	< 0.00356 U	< 0.00356 U	< 0.00356 U	< 0.00356 U	< 0.00356 U	< 0.00356 U	< 0.00356 U	< 0.00356 U	< 0.00356 U	< 0.00356 U	< 0.00356 U	< 0.00356 U
22142-PV-12-6-20250313	03/13/2025	6	< 0.00394 U	< 0.00394 U	< 0.00394 U	< 0.00394 U	< 0.00394 U	< 0.00394 U	< 0.00394 U	< 0.00394 U	< 0.00394 U	< 0.00394 U	< 0.00394 U	< 0.00394 U	< 0.00394 U	< 0.00394 U
22142-PV-13-6-20250313	03/13/2025	6	< 0.00357 U	< 0.00357 U	0.00321 J	0.00500	0.00607	0.00214 J	0.00428	< 0.00357 U	0.00428	< 0.00357 U	0.00357	0.00428	< 0.00357 U	< 0.00357 U
22142-SP-01-2-20250313	03/13/2025	2	< 0.00358 U	< 0.00358 U	< 0.00358 U	< 0.00358 U	< 0.00358 U	< 0.00358 U	< 0.00358 U	< 0.00358 U	< 0.00358 U	< 0.00358 U	< 0.00358 U	< 0.00358 U	< 0.00358 U	< 0.00358 U
22142-SP-01-4-20250313	03/13/2025	4	< 0.00398 hU	< 0.00398 hU	0.00358 hJ	0.00318 hJ	0.00358 hJ	< 0.00398 hU	0.00358 hJ	< 0.00398 hU	0.00717 h	< 0.00398 hU	< 0.00398 hU	0.00557 h	< 0.00398 hU	< 0.00398 hU

Notes:

1. Bold values exceed the ECMC Table 915-1 limit(s)
2. Red & blue highlighted soil analytical values indicate an exceedance of the referenced soil screening level (SSL)
3. * Indicates laboratory minimum detection limit in excess of SSL

ECMC = Energy and Carbon Management Commission

mg/kg = Milligrams per kilogram

ft bgs = Feet below ground surface

NA - Not analyzed

Assume wet weight on all historical data unless the lab data specifies wet vs. dry.

Qualifier Definition(s)

Origins Laboratory, Inc:

h = Preparation or preservation holding time was exceeded

hJ = Preparation or preservation holding time was exceeded. Estimated Value. Analyte below reported quantitation limit.

hU = Preparation or preservation holding time was exceeded. Sample is Non-Detect.

J = Estimated Value. Analyte below reported quantitation limit.

U = Sample is Non-Detect.

Source material characterization sample, excavated and transported off site for disposal.

TABLE 4
SUMMARY OF SOIL SUITABILITY FOR RECLAMATION
OPERATOR NOBLE 100322
CPC FERGUSON CHEWY UPRC, UPRC 23-3H4, WELD COUNTY, COLORADO
REM # 22142

Sample ID	Sample Date	Depth (ft bgs)	pH (Standard Units)	EC (mmhos/cm)	SAR (Standard Units)	Boron (mg/L)
ECMC Table 915-1 Soil Suitability Limits			6-8.3	4	6	2
22142-BG-01-2-20250313	03/13/2025	2	8.07	0.183	0.205	< 0.0990 Ua
22142-BG-01-4-20250313	03/13/2025	4	7.92	0.112	0.386	< 0.102 Ua
22142-BG-02-2-20250313	03/13/2025	2	6.40	0.0853	0.151	< 0.100 Ua
22142-BG-02-4-20250313	03/13/2025	4	7.78	0.136	0.138	< 0.100 Ua
22142-BG-03-2-20250313	03/13/2025	2	7.81	0.214	0.319	< 0.101 Ua
22142-BG-03-4-20250313	03/13/2025	4	8.37	0.333	1.22	0.318
22142-PV-01-1-20250313	03/13/2025	1	7.98	1.24	0.874	0.246
22142-PV-02-1-20250313	03/13/2025	1	8.11	0.840	0.509	0.180
22142-PV-03-1-20250313	03/13/2025	1	8.09	0.783	0.611	0.233
22142-PV-04-5-20250313	03/13/2025	5	8.19	0.457	0.601	0.109
22142-PV-05-5-20250313	03/13/2025	5	7.70	0.252	4.96	< 0.102 Ua
22142-PV-06-5-20250313	03/13/2025	5	8.40	0.355	7.77	< 0.101 Ua
22142-PV-07-5-20250313	03/13/2025	5	6.78	0.147	0.521	< 0.100 Ua
22142-PV-08-5-20250313	03/13/2025	5	7.19	0.0727	0.366	< 0.101 Ua
22142-PV-09-5-20250313	03/13/2025	5	7.41	0.309	0.651	< 0.101 Ua
22142-PV-10-5-20250313	03/13/2025	5	7.15	0.228	0.162	< 0.101 Ua
22142-PV-11-6-20250313	03/13/2025	6	7.60	0.0914	0.285	< 0.0996 Ua
22142-PV-11-N-5-20250313	03/13/2025	5	7.46	0.124	0.332	< 0.0988 Ua
22142-PV-12-6-20250313	03/13/2025	6	7.36	0.206	0.263	< 0.102 Ua
22142-PV-13-6-20250313	03/13/2025	6	8.18	0.499	0.443	0.116
22142-SP-01-2-20250313	03/13/2025	2	7.38	0.355	0.814	0.285
22142-SP-01-4-20250313	03/13/2025	4	7.01	0.258	1.27	< 0.0990 Ua
Maximum Background Concentration			8.37	NA	1.22	NA
Notes:						
1. Bold faced values exceed the ECMC Table 915-1 limit(s), but are within background concentrations.						
2. Bold faced values exceed the ECMC Table 915-1 limit(s) and native background concentrations.						
3. Brown highlighted soil analytical values indicate an exceedance of Table 915-1.						
ECMC = Energy and Carbon Management Commission						
NA - Not analyzed						
ft bgs = Feet below ground surface						
mg/L = milligrams per liter						
Assume wet weight on all historical data unless the lab data specifies wet vs. dry.						
Qualifier Definition(s)						
Origins Laboratory, Inc:						
Ua = Sample is Non-Detect.						
Source material characterization sample, excavated and transported off site for disposal.						

TABLE 5
SUMMARY OF METALS IN SOIL CHEMISTRY DATA
OPERATOR NOBLE 100322
CPC FERGUSON CHEWY UPRC, UPRC 23-3H4, WELD COUNTY, COLORADO
REM # 22142

Sample ID	Sample Date	Depth (ft bgs)	Arsenic (mg/kg)	Barium (mg/kg)	Cadmium (mg/kg)	Chromium (VI) (mg/kg)	Copper (mg/kg)	Lead (mg/kg)	Nickel (mg/kg)	Selenium (mg/kg)	Silver (mg/kg)	Zinc (mg/kg)
ECMC Table 915-1 Limits (Residential SSL)			0.68	15000	71	0.3	3100	400	1500	390	390	23000
ECMC Table 915-1 Limits (Protection of Groundwater SSL)			0.29	82	0.38	0.00067	46	14	26	0.26	0.8	370
22142-BG-01-2-20250313	03/13/2025	2	1.07	23.1	< 0.0928 Ua	< 0.352* U	< 9.28 Ua	3.03	2.43	< 0.241 Ua	< 0.0928 Ua	< 34.3 Ua
22142-BG-01-4-20250313	03/13/2025	4	1.29	29.6	< 0.0895 Ua	< 0.329* U	< 8.95 Ua	3.09	3.20	< 0.233 Ua	< 0.0895 Ua	< 33.1 Ua
22142-BG-02-2-20250313	03/13/2025	2	1.10	19.3	< 0.0938 Ua	< 0.422* U	< 9.38 Ua	2.82	2.39	< 0.244 Ua	< 0.0938 Ua	< 34.7 Ua
22142-BG-02-4-20250313	03/13/2025	4	1.16	26.0	< 0.0899 Ua	< 0.408* U	< 8.99 Ua	3.28	3.46	< 0.234 Ua	< 0.0899 Ua	< 33.3 Ua
22142-BG-03-2-20250313	03/13/2025	2	1.52	53.3	< 0.0895 Ua	< 0.393* U	< 8.95 Ua	4.68	4.67	< 0.233 Ua	< 0.0895 Ua	< 33.1 Ua
22142-BG-03-4-20250313	03/13/2025	4	2.31	82.3	0.0989	< 0.383* U	< 9.79 Ua	7.04	7.20	< 0.255 Ua	< 0.0979 Ua	< 36.2 Ua
22142-PV-01-1-20250313	03/13/2025	1	6.38	95.3	0.628	< 0.355* U	27.7	34.8	8.79	0.318	0.409	88.9
22142-PV-02-1-20250313	03/13/2025	1	4.65	77.1	0.436	< 0.343* U	19.0	23.7	7.23	0.290	0.286	65.4
22142-PV-03-1-20250313	03/13/2025	1	4.13	69.1	0.417	< 0.325* U	17.7	20.2	6.41	0.327	0.238	57.7
22142-PV-04-5-20250313	03/13/2025	5	2.25	48.7	0.128	< 0.315* U	< 9.76 Ua	7.10	5.72	< 0.254 Ua	< 0.0976 Ua	< 36.1 Ua
22142-PV-05-5-20250313	03/13/2025	5	1.81	45.8	< 0.0881 Ua	< 0.319* U	< 8.81 Ua	5.65	4.52	< 0.229 Ua	< 0.0881 Ua	< 32.6 Ua
22142-PV-06-5-20250313	03/13/2025	5	1.62	43.7	< 0.0914 Ua	< 0.376* U	< 9.14 Ua	4.14	3.78	< 0.238 Ua	< 0.0914 Ua	< 33.8 Ua
22142-PV-07-5-20250313	03/13/2025	5	1.84	49.7	< 0.0962 Ua	< 0.339* U	< 9.62 Ua	5.42	4.74	< 0.250 Ua	< 0.0962 Ua	< 35.6 Ua
22142-PV-08-5-20250313	03/13/2025	5	2.00	61.7	< 0.0924 Ua	< 0.397* U	< 9.24 Ua	6.65	4.86	< 0.240 Ua	< 0.0924 Ua	< 34.2 Ua
22142-PV-09-5-20250313	03/13/2025	5	1.73	52.4	< 0.0942 Ua	< 0.389* U	< 9.42 Ua	6.26	4.88	< 0.245 Ua	< 0.0942 Ua	< 34.9 Ua
22142-PV-10-5-20250313	03/13/2025	5	1.41	41.9	< 0.0894 Ua	< 0.431* U	< 8.94 Ua	4.28	3.56	< 0.233 Ua	< 0.0894 Ua	< 33.1 Ua
22142-PV-11-6-20250313	03/13/2025	6	1.52	36.2	< 0.0879 Ua	< 0.319* U	< 8.79 Ua	4.78	4.37	< 0.228 Ua	< 0.0879 Ua	< 32.5 Ua
22142-PV-11-N-5-20250313	03/13/2025	5	1.54	48.0	< 0.0887 Ua	< 0.311* U	< 8.87 Ua	4.82	5.32	< 0.231 Ua	< 0.0887 Ua	< 32.8 Ua
22142-PV-12-6-20250313	03/13/2025	6	1.33	42.8	< 0.0862 Ua	< 0.462* U	< 8.62 Ua	4.91	4.53	< 0.224 Ua	< 0.0862 Ua	< 31.9 Ua
22142-PV-13-6-20250313	03/13/2025	6	2.47	77.3	0.109	< 0.424* U	< 9.69 Ua	6.36	5.61	< 0.252 Ua	< 0.0969 Ua	< 35.9 Ua
22142-SP-01-2-20250313	03/13/2025	2	2.13	49.6	0.135	< 0.340* U	< 9.87 Ua	6.91	4.73	< 0.257 Ua	< 0.0987 Ua	< 36.5 Ua
22142-SP-01-4-20250313	03/13/2025	4	1.87	56.9	0.112	< 0.261* U	< 9.41 Ua	6.64	5.35	< 0.245 Ua	< 0.0941 Ua	< 34.8 Ua
1.25x Maximum Background Concentration			2.89	103	0.124	NA	NA	8.80	NA	NA	NA	NA
Notes:												
1. Bold faced values exceed the ECMC Table 915-1 limit(s), but are within 1.25x background concentrations.												
2. Red faced values exceed the ECMC Table 915-1 limit(s) and native background concentrations.												
3. Red & blue highlighted soil analytical values indicate an exceedance of the referenced soil screening level (SSL).												
4. Non-detect background results accounted for in the highest background concentration by using the reporting limit.												
ECMC = Energy and Carbon Management Commission												
(<) = Analytical result is less than the indicated laboratory reporting limit.												
ft bgs = Feet below ground surface												
mg/kg = Milligrams per kilogram												
* Indicates laboratory minimum detection limit in excess of SSL												
NA - Not analyzed												
Assume wet weight on all historical data unless the lab data specifies wet vs. dry.												
Qualifier Definition(s)												
Origins Laboratory, Inc:												
U = Sample is Non-Detect.												
Ua = Sample is Non-Detect.												
Source material characterization sample, excavated and transported off site for disposal.												