

Inspection/Audit Photos

Location Name: QB ENERGY OPERATING LLC CHEVRON 1N-4D

Location ID: 335566



Photo # 1 Scout Card records & Drilling Completion Report coordinates for the CHEVRON 1N-4D well - Coordinates appear to be off by approximately 40 ft (coordinates incorrect/not in compliance with CECMC Rules 216 & 414 – records require updating)

Photo # 2 Scout Card records & Drilling Completion Report coordinates for the CHEVRON 1N-4D well - Coordinates appear to be off by approximately 40 ft (coordinates incorrect/not in compliance with CECMC Rules 216 & 414 – records require updating)

Inspection/Audit Photos

Location Name: QB ENERGY OPERATING LLC PUCKETT CHEVRON 8L-5D

Location ID: 335566



Photo # 3 Scout Card records & Drilling Completion Report coordinates for the CHEVRON 8L-5D well - Coordinates appear to be off by approximately 29 ft (coordinates incorrect/not in compliance with CECMC Rules 216 & 414 – records require updating)

Photo # 4 Scout Card records & Drilling Completion Report coordinates for the CHEVRON 8L-5D well - Coordinates appear to be off by approximately 29 ft (coordinates incorrect/not in compliance with CECMC Rules 216 & 414 – records require updating)

Inspection/Audit Photos

Location Name: QB ENERGY OPERATING LLC CHEVRON 8I-5D

Location ID: 335566

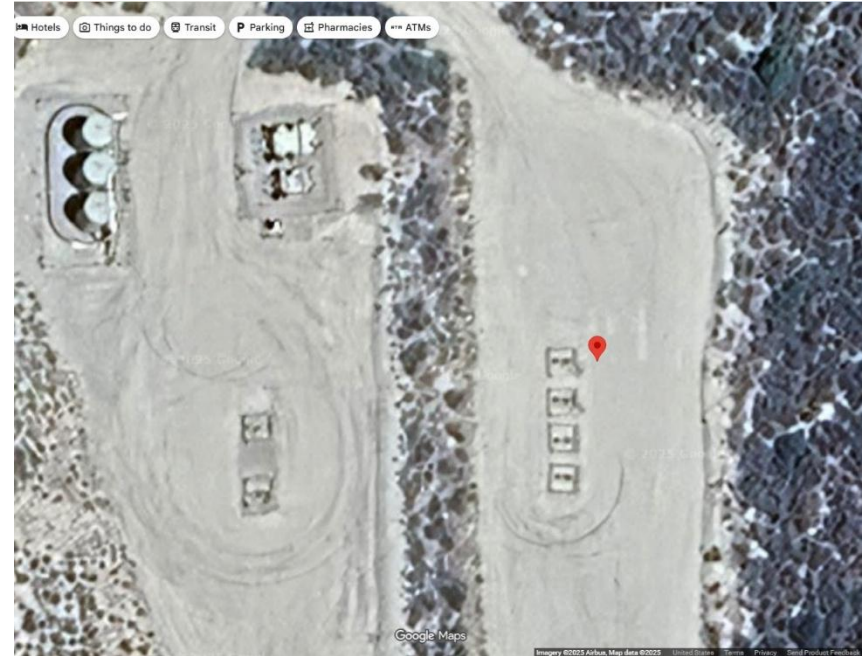


Photo # 5 Scout Card records & Drilling Completion Report coordinates for the CHEVRON 8I-5D well - Coordinates appear to be off by approximately 10-12 ft (coordinates incorrect/not in compliance with CECMC Rules 216 & 414 – records require updating)

Photo # 6 Scout Card records & Drilling Completion Report coordinates for the CHEVRON 8I-5D well - Coordinates appear to be off by approximately 10-12 ft (coordinates incorrect/not in compliance with CECMC Rules 216 & 414 – records require updating)

Inspection/Audit Photos

Location Name: QB ENERGY OPERATING LLC CHEVRON 8K-5D

Location ID: 335566



Photo # 7 Scout Card records & Drilling Completion Report coordinates for the CHEVRON 8K-5D well - Coordinates appear to be off by approximately 12-14 ft (coordinates incorrect/not in compliance with CECMC Rules 216 & 414 – records require updating)

Photo # 8 Scout Card records & Drilling Completion Report coordinates for the CHEVRON 8K-5D well - Coordinates appear to be off by approximately 12-14 ft (coordinates incorrect/not in compliance with CECMC Rules 216 & 414 – records require updating)