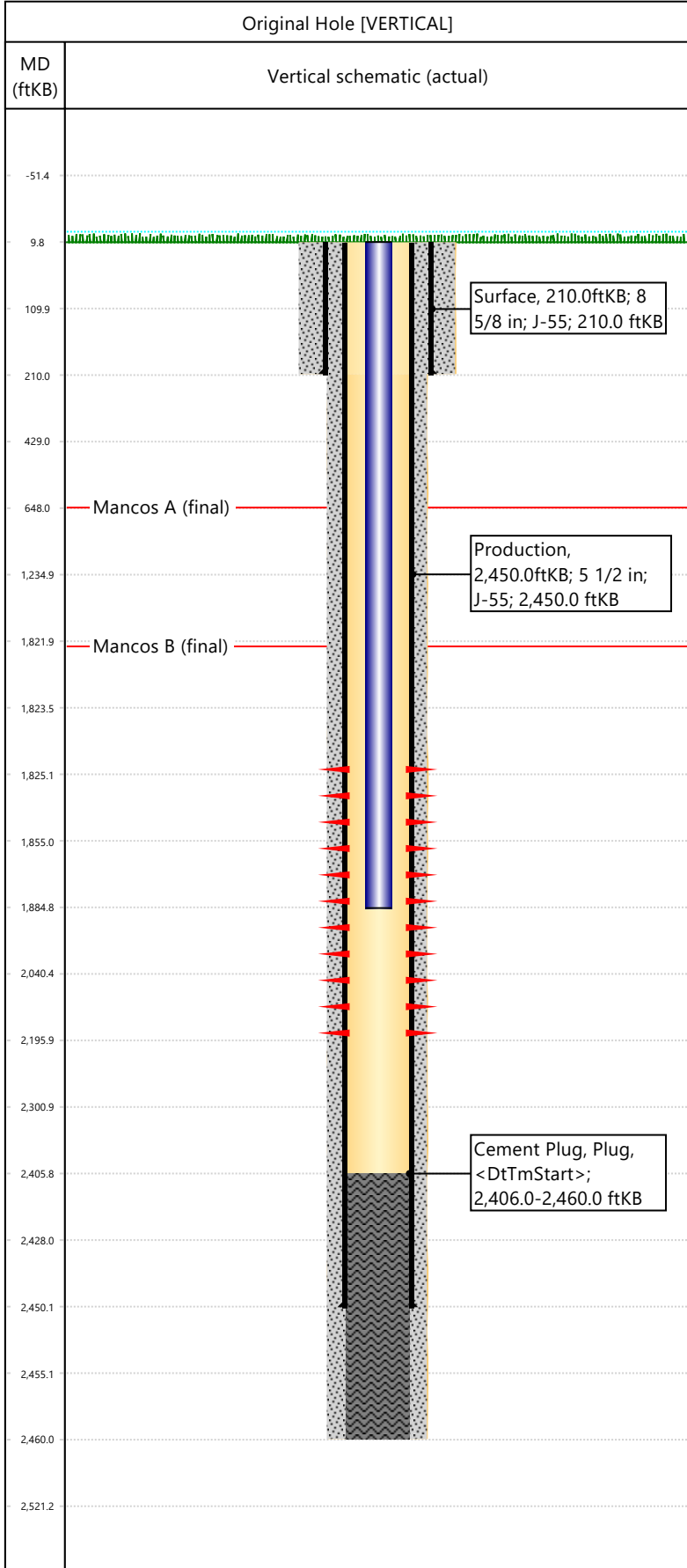


Well Name: DRAGON TRAIL E 1 2003

API/UWI 05103094250000	Surface Legal Location 31-02S-101W	Field Name	License #	State/Province CO	Well Configuration Type VERTICAL
Original KB Elevation (ft) 6,291	KB-Tubing Head Distance (ft)	Spud Date 5/25/1990 00:00	Rig Release Date	PBTD (All) (KB)	Total Depth All (TVD) (KB)



Hole Size		Size (in)	Bottom Depth (ftKB)			
Section Description	Surface	12 1/4	210.0			
Section Description	Production	7 7/8	2,460.0			
Formations						
Formation Name	Mancos A	Final Top MD (ftKB) 648.0				
Formation Name	Mancos B	Final Top MD (ftKB) 1,822.0				
Casing Strings						
Csg Des	OD (in)	Wt/Len (lb/ft)	Grade	Set Depth (ftKB)		
Surface	8 5/8	24.00	J-55	210.0		
Production	5 1/2	15.50	J-55	2,450.0		
Perforations						
Date	Top (ftKB)	Btm (ftKB)	Zone			
7/4/1990	1825	2196				
Total						
Tubing Strings						
Tubing Description	Run Date	String Length (ft)	Set Depth (ftKB)			
Tubing - Production	7/4/1990	1,875.00	1,885.0			
Item Des	Icon	Jts	OD (in)	Wt (lb/ft)	Grade	Len (ft)
Tubing			1.9	2.76	J-55	1875
Rod Strings						
Rod Description	Run Date	String Length (ft)	Set Depth (ftKB)			
Item Des	Icon	Jts	OD (in)	Wt (lb/ft)	Grade	Len (ft)
Other In Hole						
Des	Icon	OD (in)	Top (ftKB)	Btm (ftKB)	Run Date	Pull Date
Cement						
Description	Proposed/Actual Run	Type	Top Depth (ftKB)			
Production Casing Cement	Actual	Casing	10.0			
Cement Plug	Actual	Plug	2,406.0			
Surface Casing Cement	Actual	Casing	10.0			