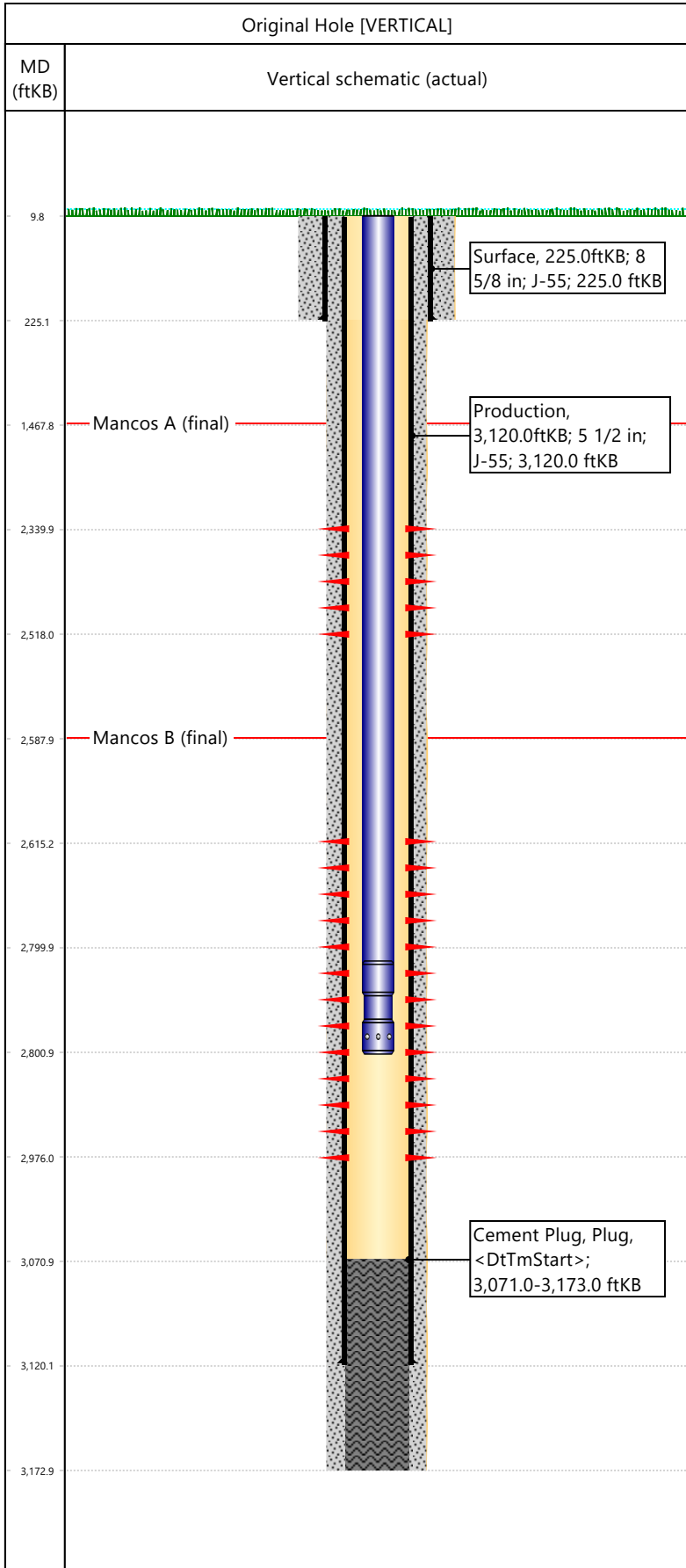


Well Name: DRAGON TRAIL UN 1326

API/UWI 05103094490000	Surface Legal Location 25-02S-103W	Field Name Dragon Trail	License #	State/Province CO	Well Configuration Type VERTICAL
Original KB Elevation (ft) 6,847	KB-Tubing Head Distance (ft)	Spud Date 7/22/1990 00:00	Rig Release Date	PBTD (All) (KB)	Total Depth All (TVD) (KB)



Hole Size						
Section Description	Size (in)	Bottom Depth (ftKB)				
Surface	12 1/4	225.0				
Section Description	Size (in)	Bottom Depth (ftKB)				
Production	7 7/8	3,173.0				
Formations						
Formation Name	Final Top MD (ftKB)					
Mancos A	1,468.0					
Formation Name	Final Top MD (ftKB)					
Mancos B	2,588.0					
Casing Strings						
Csg Des	OD (in)	Wt/Len (lb/ft)	Grade	Set Depth (ftKB)		
Surface	8 5/8	24.00	J-55	225.0		
Production	5 1/2	15.50	J-55	3,120.0		
Perforations						
Date	Top (ftKB)	Btm (ftKB)	Zone			
7/27/2002	2340	2518				
8/29/1990	2615	2976				
Total						
Tubing Strings						
Tubing Description	Run Date	String Length (ft)	Set Depth (ftKB)			
Tubing - Production	8/11/2008	2,791.00	2,801.0			
Item Des	Icon	Jts	OD (in)	Wt (lb/ft)	Grade	Len (ft)
Tubing			2 3/8	4.70	J-55	2790
Landing Nipple			2 3/8			1
Rod Strings						
Rod Description	Run Date	String Length (ft)	Set Depth (ftKB)			
Item Des	Icon	Jts	OD (in)	Wt (lb/ft)	Grade	Len (ft)
Other In Hole						
Des	Icon	OD (in)	Top (ftKB)	Btm (ftKB)	Run Date	Pull Date
Cement						
Description	Proposed/Actual Run	Type	Top Depth (ftKB)			
Cement Plug	Actual	Plug	3,071.0			
Description	Proposed/Actual Run	Type	Top Depth (ftKB)			
Production Casing Cement	Actual	Casing	10.0			
Description	Proposed/Actual Run	Type	Top Depth (ftKB)			
Surface Casing Cement	Actual	Casing	10.0			